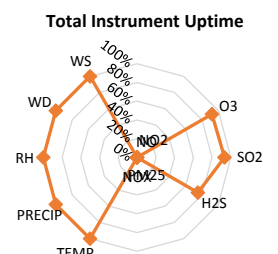
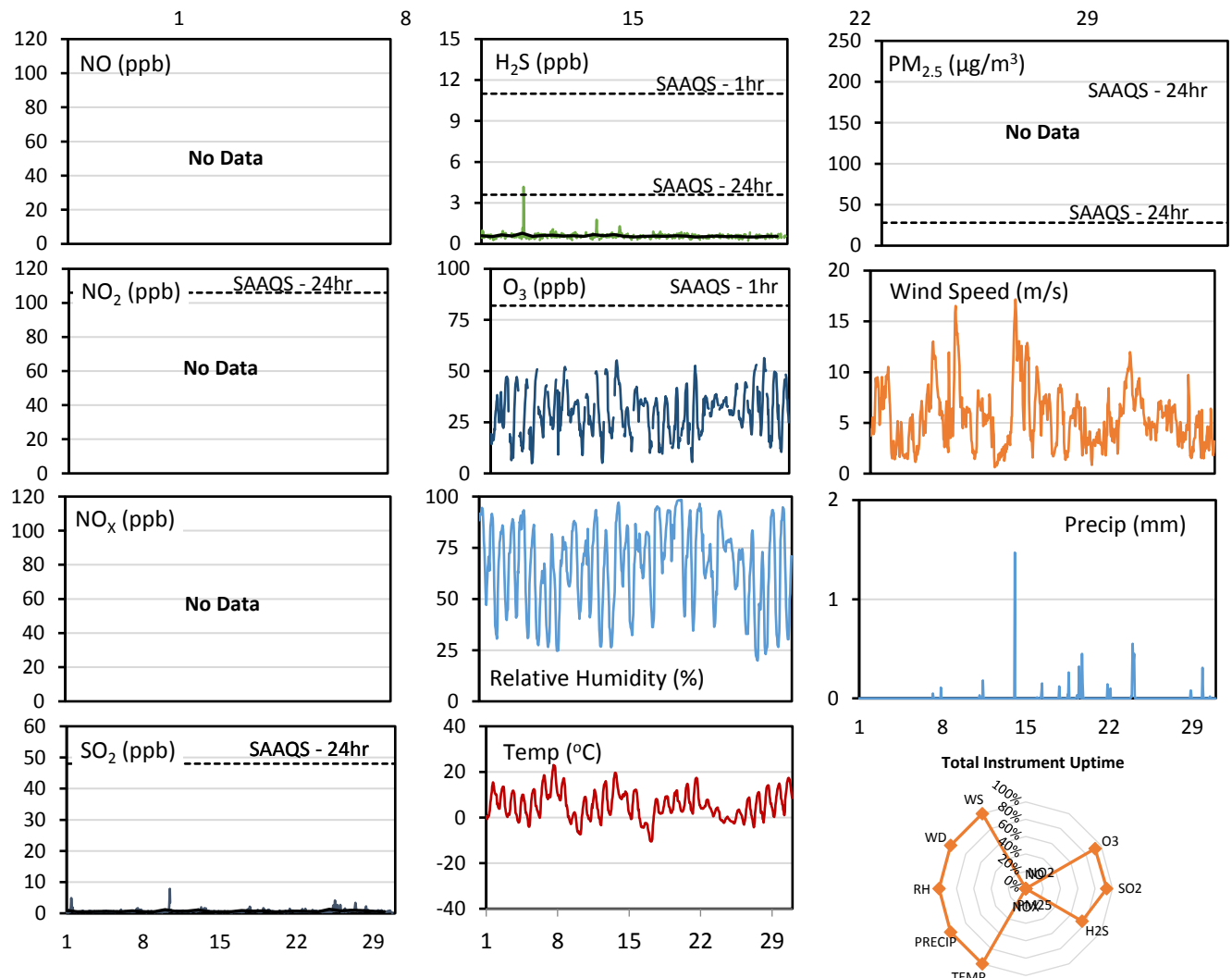
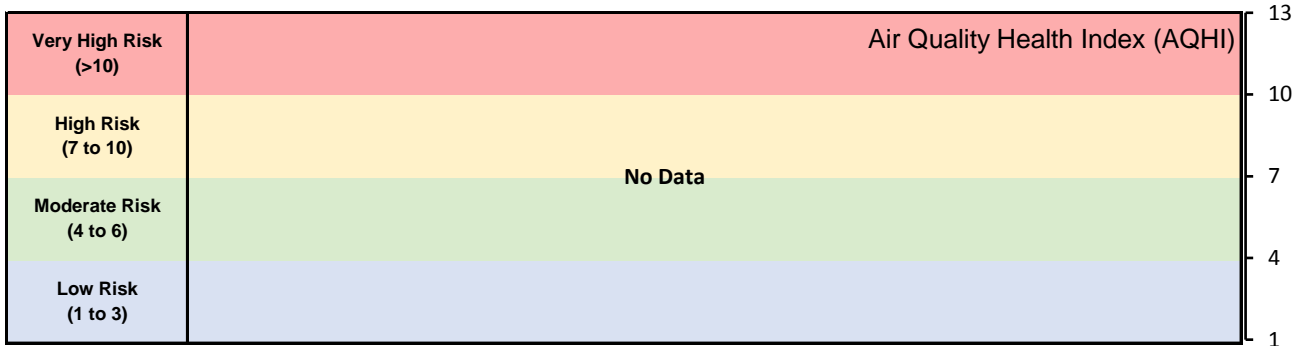


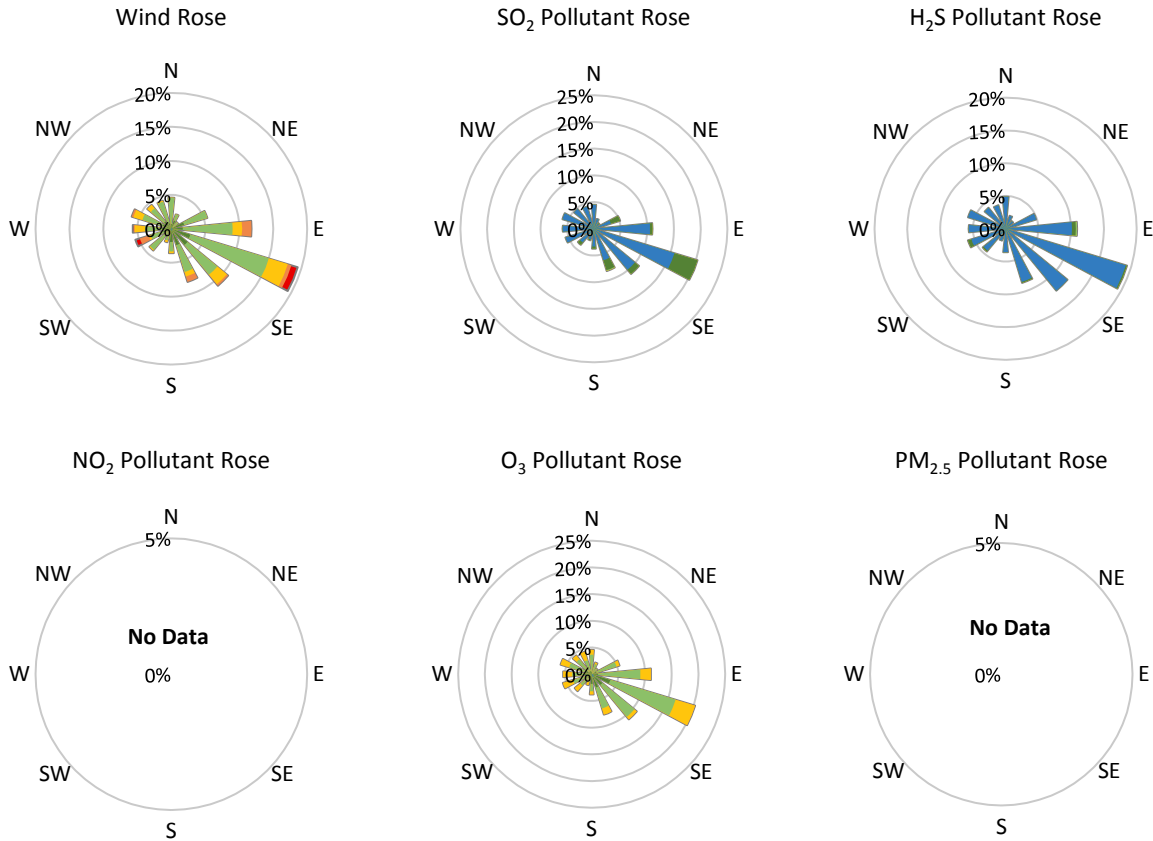
## GPAZ Pense Station - April 2017 Summary Report

Pollutants		Month Records		24-Hour Records				1-Hour Records			
Name	Conc. Unit	Avg. Conc.	Uptime	Maximum		SAAQS Standard	Exceed Days	Maximum		SAAQS Standard	Exceed Hours
				Conc.	Time			Conc.	Time		
NO	ppb	No Data	0%	No Data	No Data	-	-	0.0	No Data	-	-
NO <sub>2</sub>	ppb	No Data	0%	No Data	No Data	106	0	0.0	No Data	159	0
NO <sub>x</sub>	ppb	No Data	0%	No Data	No Data	-	-	0.0	No Data	-	-
SO <sub>2</sub>	ppb	0.7	93%	1.3	Apr-25	48	0	7.9	Apr-10 10:00	172	0
H <sub>2</sub> S	ppb	0.6	75%	0.8	Apr-05	3.6	0	4.2	Apr-05 03:00	11	0
O <sub>3</sub>	ppb	30.2	92%	37.5	Apr-08	-	-	56.4	Apr-28 12:00	82	0
PM <sub>2.5</sub>	µg/m <sup>3</sup>	No Data	No Data	No Data	No Data	28	No Data	No Data	No Data	-	No Data

SAAQS: Saskatchewan Ambient Air Quality Standards



\* colored lines indicate 1-hr concentration data for all parameters; solid black lines indicate 24-hr concentrations for PM<sub>2.5</sub>, NO<sub>2</sub>, SO<sub>2</sub>, and H<sub>2</sub>S



Parameters	Unit	Color Code for Wind Speed and Pollution Concentration Class					
Wind Speed	m/s	0.3 ≤ WS < 1.4	1.4 ≤ WS < 3.1	3.1 ≤ WS < 7.8	7.8 ≤ WS < 10.8	10.8 ≤ WS < 13.6	WS ≥ 13.6
SO <sub>2</sub>	ppb	0 ≤ C < 1	1 ≤ C < 5	5 ≤ C < 10	10 ≤ C < 57	57 ≤ C < 172	C ≥ 172
NO <sub>2</sub>	ppb	0 ≤ C < 5	5 ≤ C < 15	15 ≤ C < 30	30 ≤ C < 100	100 ≤ C < 212	C ≥ 212
H <sub>2</sub> S	ppb	0 ≤ C < 1	1 ≤ C < 3.6	3.6 ≤ C < 5	5 ≤ C < 8	8 ≤ C < 10.8	C ≥ 10.8
O <sub>3</sub>	ppb	0 ≤ C < 10	10 ≤ C < 20	20 ≤ C < 40	40 ≤ C < 60	60 ≤ C < 82	C ≥ 82
PM <sub>2.5</sub>	µg/m <sup>3</sup>	0 ≤ C < 2	2 ≤ C < 4	4 ≤ C < 10	10 ≤ C < 20	20 ≤ C < 30	C ≥ 30

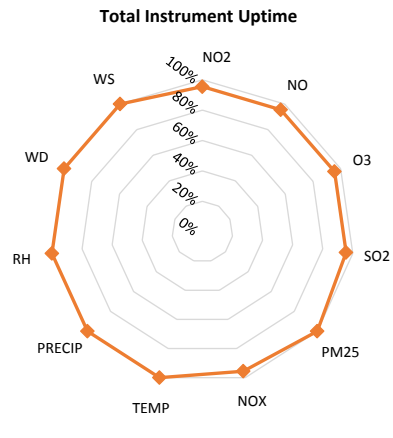
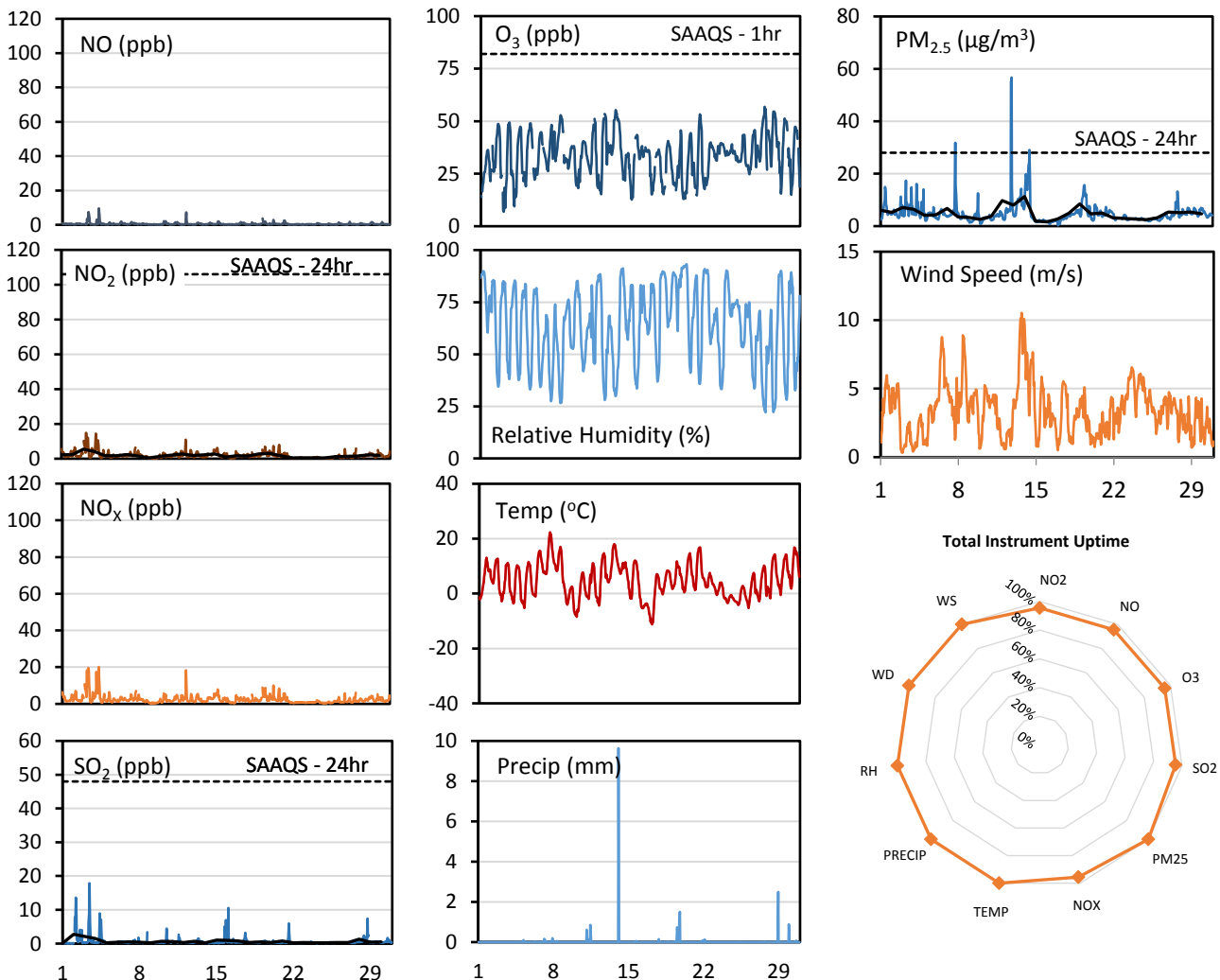
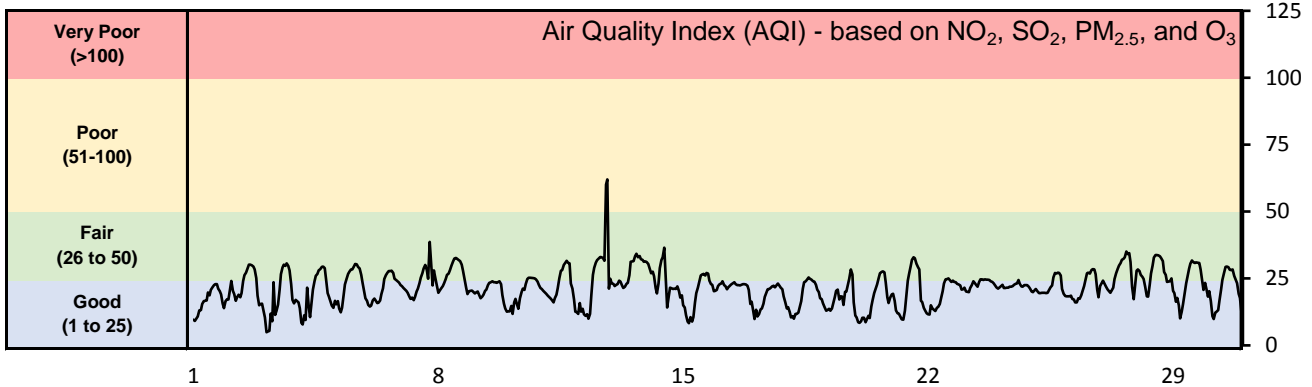
Monthly Update

- Achieved >96% of scheduled uptime for SO<sub>2</sub> and O<sub>3</sub>, and 78% for H<sub>2</sub>S
- Achieved >92% of total uptime for SO<sub>2</sub> and O<sub>3</sub>, and 75% for H<sub>2</sub>S
- Downtime of 4% due to routine daily Internal Zeroes and Spans (8% for O<sub>3</sub>)
- Downtime for all other parameters a result of operational issues

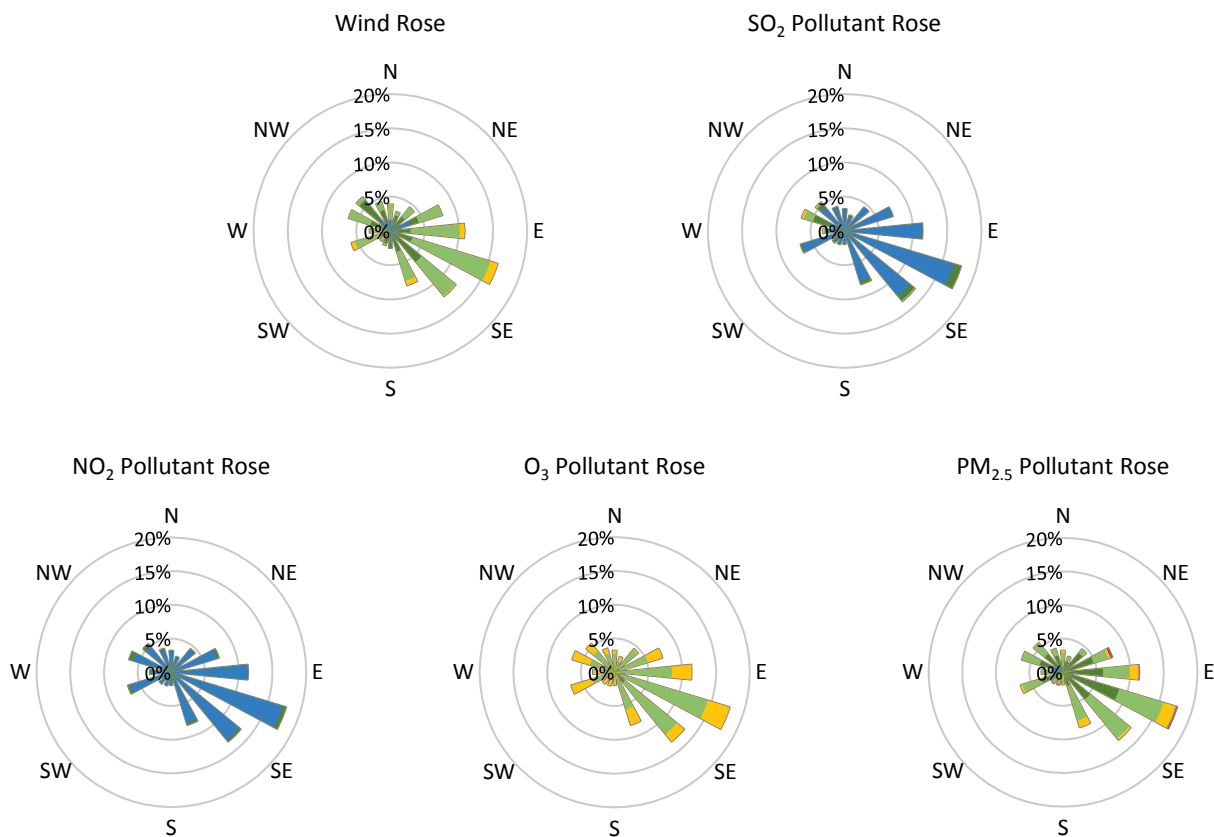
## GPAZ East Regina Station - April 2017 Summary Report

Pollutants		Month Records		24-Hour Records				1-Hour Records			
Name	Conc. Unit	Avg. Conc.	Uptime	Maximum		SAAQS Standard	Exceed Days	Maximum		SAAQS Standard	Exceed Hours
				Conc.	Time			Conc.	Time		
NO	ppb	0.6	96%	1.5	Apr-03	-	-	9.6	Apr-04 08:00	-	-
NO <sub>2</sub>	ppb	1.9	96%	5.5	Apr-03	106	0	14.8	Apr-03 06:00	159	0
NO <sub>x</sub>	ppb	2.4	96%	7.0	Apr-03	-	-	20.1	Apr-04 08:00	-	-
SO <sub>2</sub>	ppb	0.6	96%	2.8	Apr-02	48	0	17.9	Apr-03 11:00	172	0
O <sub>3</sub>	ppb	33.5	96%	44.0	Apr-13	-	-	56.9	Apr-27 16:00	82	0
PM <sub>2.5</sub>	µg/m <sup>3</sup>	4.9	100%	11.3	Apr-14	28	0	56.7	Apr-12 20:00	-	-

SAAQS: Saskatchewan Ambient Air Quality Standards



\* colored lines indicate 1-hr concentration data for all parameters; solid black lines indicate 24-hr concentrations for PM<sub>2.5</sub>, NO<sub>2</sub>, and SO<sub>2</sub>



Parameters	Unit	Color Code for Wind Speed and Pollution Concentration Class						
		$0.3 \leq WS < 1.4$	$1.4 \leq WS < 3.1$	$3.1 \leq WS < 7.8$	$7.8 \leq WS < 10.8$	$10.8 \leq WS < 13.6$	$WS \geq 13.6$	
SO <sub>2</sub>	ppb	$0 \leq C < 1$	$1 \leq C < 5$	$5 \leq C < 10$	$10 \leq C < 57$	$57 \leq C < 172$	$C \geq 172$	
NO <sub>2</sub>	ppb	$0 \leq C < 5$	$5 \leq C < 15$	$15 \leq C < 30$	$30 \leq C < 100$	$100 \leq C < 212$	$C \geq 212$	
O <sub>3</sub>	ppb	$0 \leq C < 10$	$10 \leq C < 20$	$20 \leq C < 40$	$40 \leq C < 60$	$60 \leq C < 82$	$C \geq 82$	
PM <sub>2.5</sub>	$\mu\text{g}/\text{m}^3$	$0 \leq C < 2$	$2 \leq C < 4$	$4 \leq C < 10$	$10 \leq C < 20$	$20 \leq C < 30$	$C \geq 30$	

Monthly Update

- Achieved >99% of scheduled uptime for all parameters
- All parameters achieved >96% of total uptime
- No operational issues