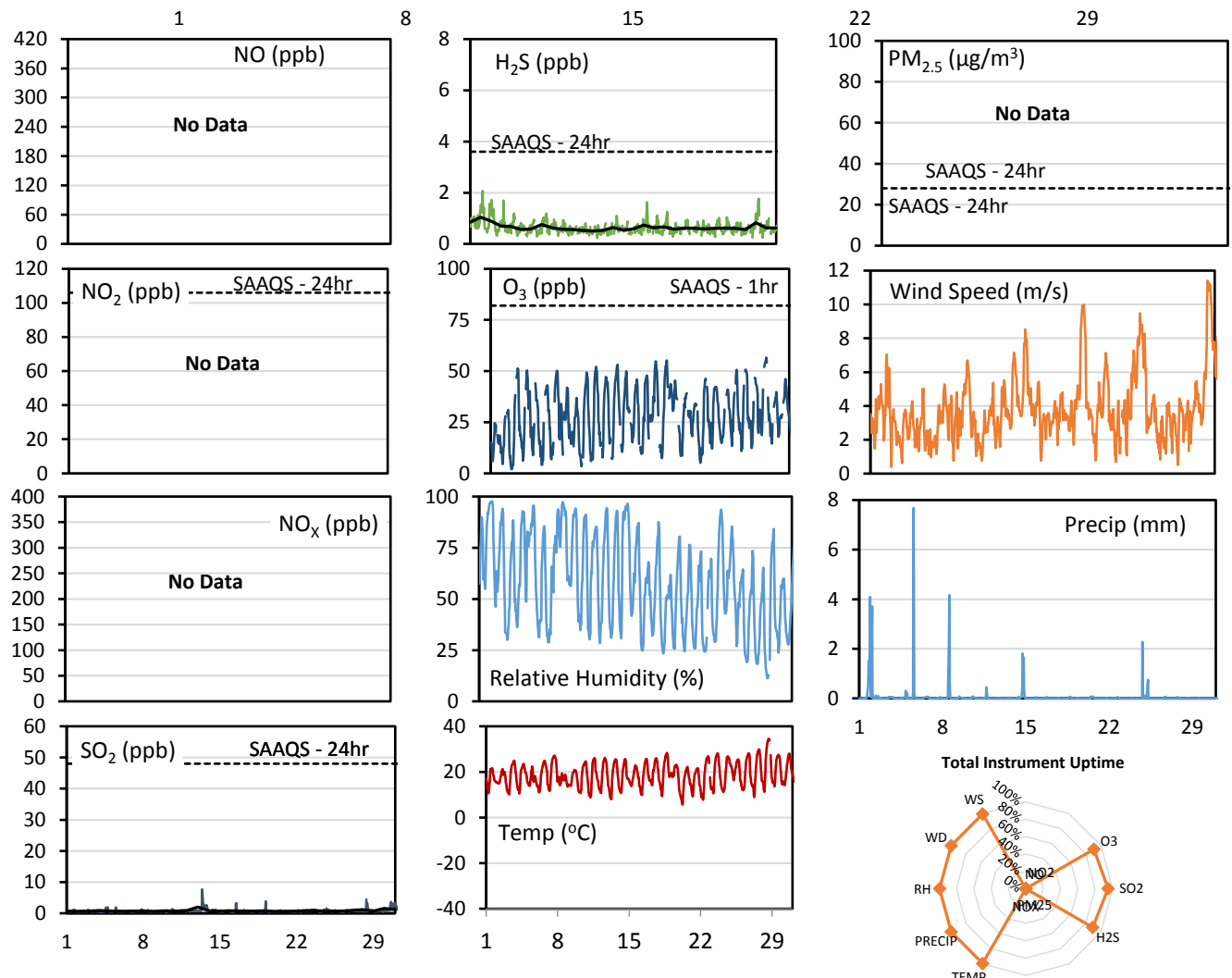
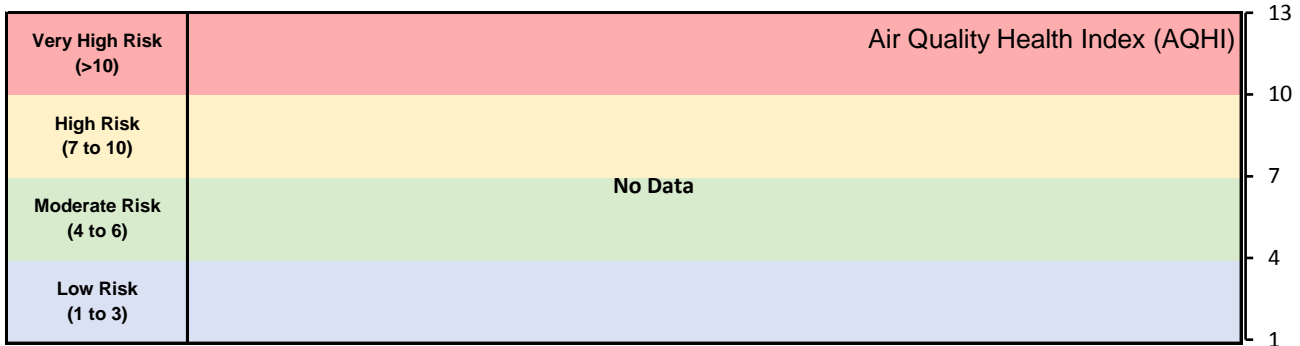


## GPAZ Pense Station - August 2017 Summary Report

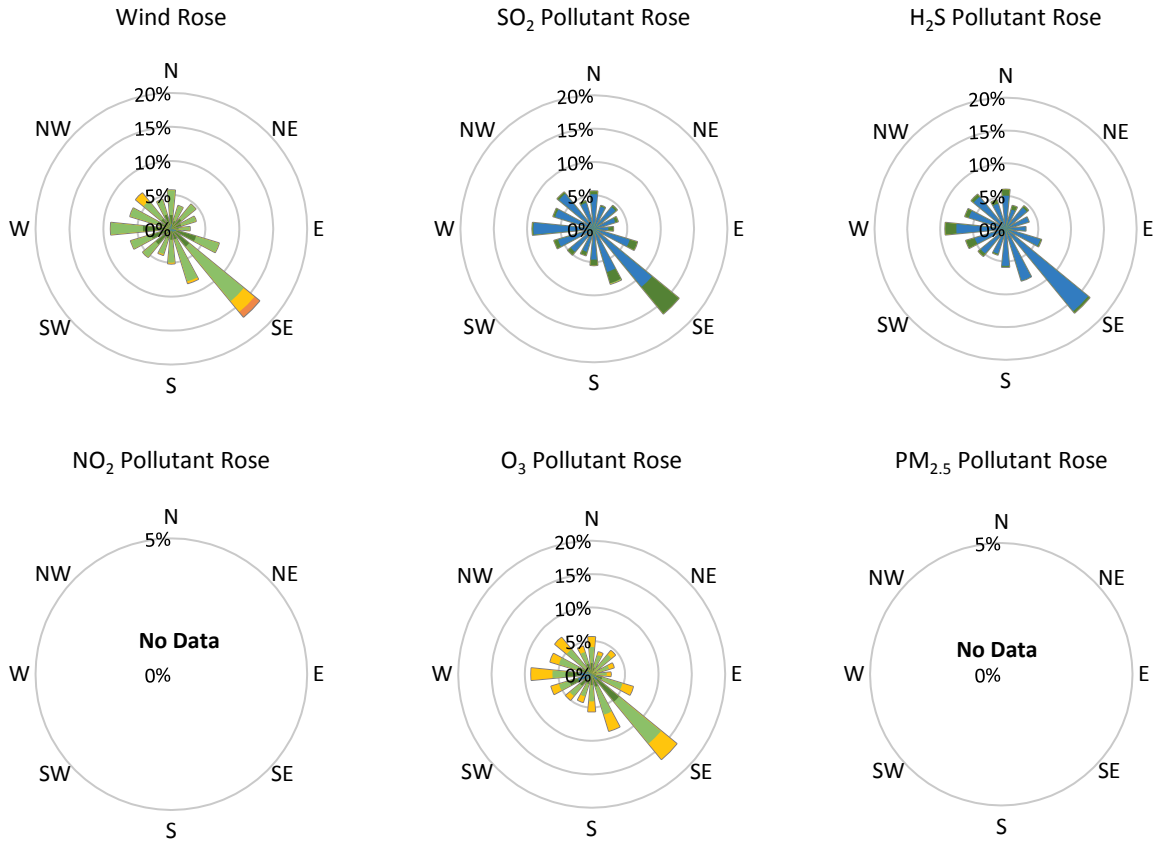
Pollutants		Month Records		24-Hour Records				1-Hour Records			
Name	Conc. Unit	Avg. Conc.	Total Uptime	Maximum		SAAQS Standard	Exceed Days	Maximum		SAAQS Standard	Exceed Hours
				Conc.	Time			Conc.	Time		
NO	ppb	No Data	No Data	No Data	No Data	-	No Data	No Data	No Data	-	No Data
NO <sub>2</sub>	ppb	No Data	No Data	No Data	No Data	106	No Data	No Data	No Data	159	No Data
NO <sub>x</sub>	ppb	No Data	No Data	No Data	No Data	-	No Data	No Data	No Data	-	No Data
SO <sub>2</sub>	ppb	0.8	95%	2.0	Aug-13	48	0	7.7	Aug-13 09:00	172	0
H <sub>2</sub> S	ppb	0.6	89%	1.0	Aug-02	3.6	0	2.1	Aug-02 05:00	11	0
O <sub>3</sub>	ppb	28.3	91%	37.3	Aug-28	-	-	56.6	Aug-28 17:00	82	0
PM <sub>2.5</sub>	µg/m <sup>3</sup>	No Data	No Data	No Data	No Data	28	No Data	No Data	No Data	-	No Data

SAAQS: Saskatchewan Ambient Air Quality Standards



\* colored lines indicate 1-hr concentration data for all parameters; solid black lines indicate 24-hr concentrations for PM<sub>2.5</sub>, NO<sub>2</sub>, SO<sub>2</sub>, and H<sub>2</sub>S

**GPAZ Pense Station - August 2017 Summary Report**



Parameters	Unit	Color Code for Wind Speed and Pollution Concentration Class					
		0.3 ≤ WS < 1.4	1.4 ≤ WS < 3.1	3.1 ≤ WS < 7.8	7.8 ≤ WS < 10.8	10.8 ≤ WS < 13.6	WS ≥ 13.6
SO <sub>2</sub>	ppb	0 ≤ C < 1	1 ≤ C < 5	5 ≤ C < 10	10 ≤ C < 57	57 ≤ C < 172	C ≥ 172
NO <sub>2</sub>	ppb	0 ≤ C < 5	5 ≤ C < 15	15 ≤ C < 30	30 ≤ C < 100	100 ≤ C < 212	C ≥ 212
H <sub>2</sub> S	ppb	0 ≤ C < 1	1 ≤ C < 3.6	3.6 ≤ C < 5	5 ≤ C < 8	8 ≤ C < 10.8	C ≥ 10.8
O <sub>3</sub>	ppb	0 ≤ C < 10	10 ≤ C < 20	20 ≤ C < 40	40 ≤ C < 60	60 ≤ C < 82	C ≥ 82
PM <sub>2.5</sub>	µg/m <sup>3</sup>	0 ≤ C < 2	2 ≤ C < 4	4 ≤ C < 10	10 ≤ C < 20	20 ≤ C < 30	C ≥ 30

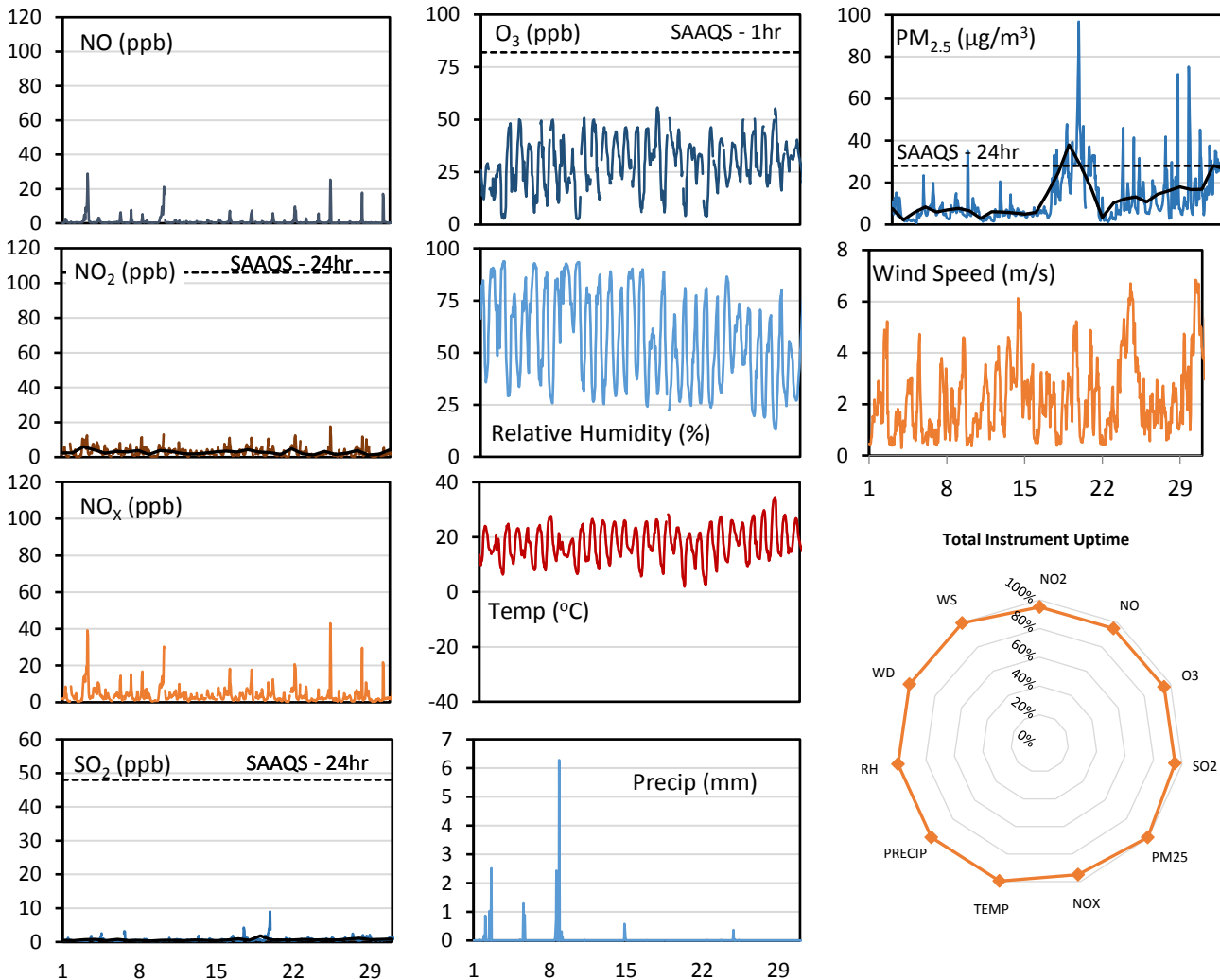
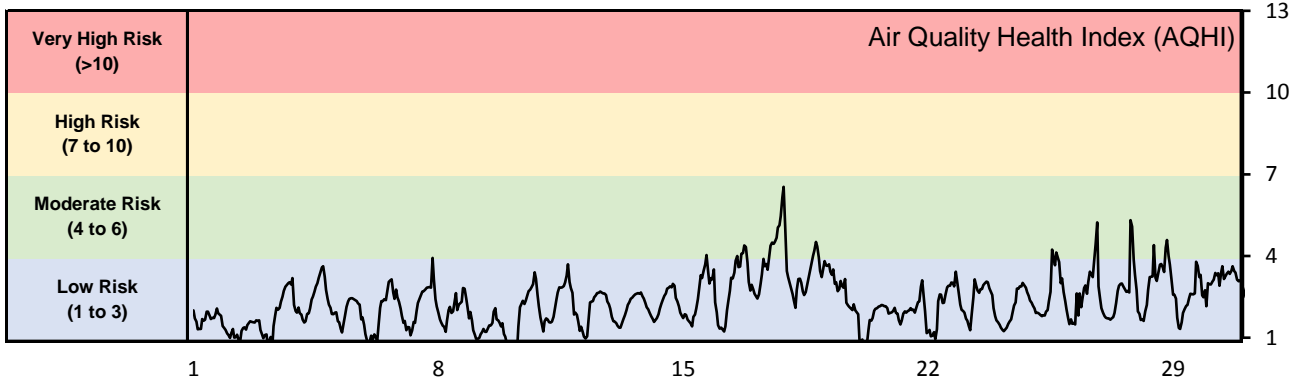
**Monthly Update**

- Achieved 99.2%, 94.8%, and 93.3% of scheduled uptime for SO<sub>2</sub>, O<sub>3</sub>, and H<sub>2</sub>S respectively
- Achieved 95%, 91%, and 89% total uptime for SO<sub>2</sub>, O<sub>3</sub>, and H<sub>2</sub>S respectively
- Downtime of 4% due to routine daily Internal Zeroes and Spans
- Downtime for all other parameters due to operational issues

## GPAZ East Regina Station - August 2017 Summary Report

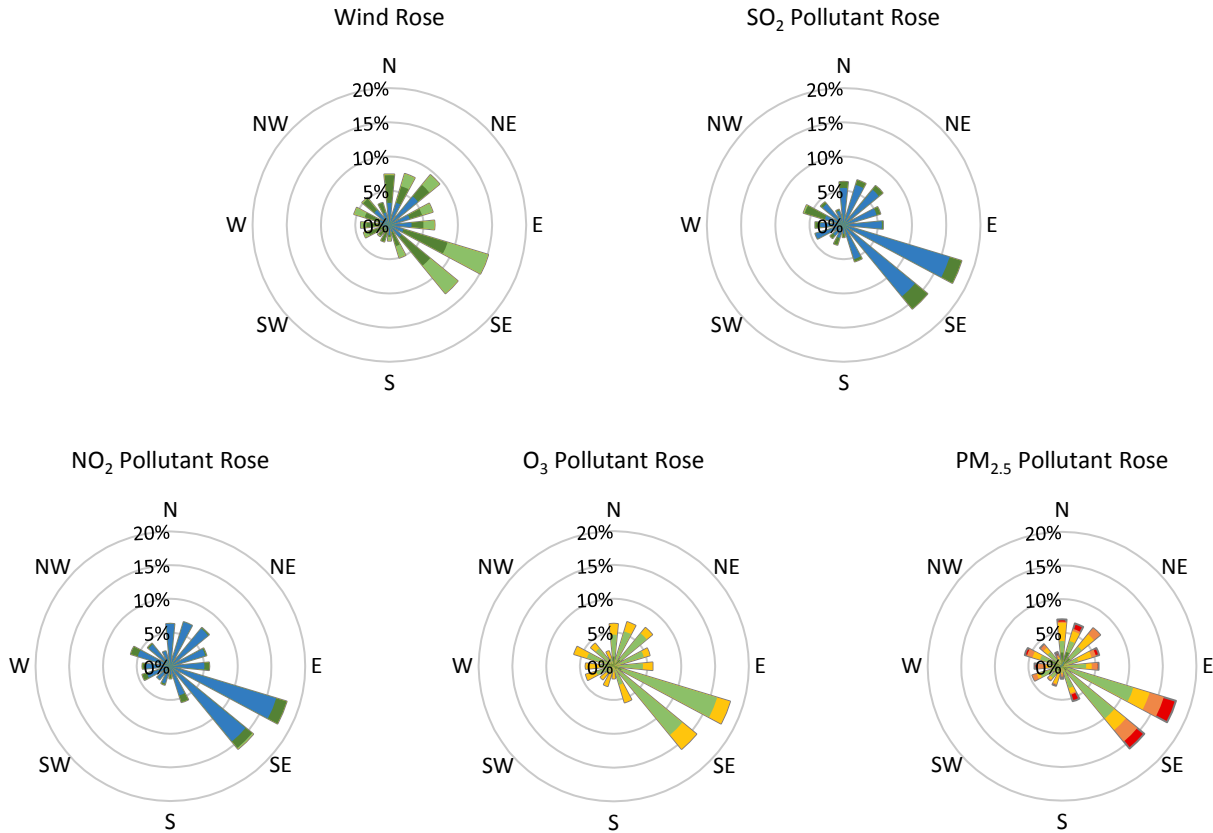
Pollutants		Month Records		24-Hour Records				1-Hour Records			
Name	Conc. Unit	Avg. Conc.	Total Uptime	Maximum		SAAQS Standard	Exceed Days	Maximum		SAAQS Standard	Exceed Hours
				Conc.	Time			Conc.	Time		
NO	ppb	#DIV/0!	0%	0.0	#N/A	-	-	0.0	#N/A	-	-
NO <sub>2</sub>	ppb	#DIV/0!	0%	0.0	#N/A	106	0	0.0	#N/A	159	0
NO <sub>x</sub>	ppb	#DIV/0!	0%	0.0	#N/A	-	-	0.0	#N/A	-	-
SO <sub>2</sub>	ppb	0.8	95%	2.0	Aug-13	48	0	7.7	Aug-13 09:00	172	0
O <sub>3</sub>	ppb	28.3	91%	37.3	Aug-28	-	-	56.6	Aug-28 17:00	82	0
PM <sub>2.5</sub>	µg/m <sup>3</sup>	#DIV/0!	0%	0.0	#N/A	28	0	0.0	#N/A	-	-

SAAQS: Saskatchewan Ambient Air Quality Standards



\* colored lines indicate 1-hr concentration data for all parameters; solid black lines indicate 24-hr concentrations for PM<sub>2.5</sub>, NO<sub>2</sub>, and SO<sub>2</sub>

## GPAZ East Regina Station - August 2017 Summary Report



Parameters	Unit	Color Code for Wind Speed and Pollution Concentration Class						
		$0.3 \leq WS < 1.4$	$1.4 \leq WS < 3.1$	$3.1 \leq WS < 7.8$	$7.8 \leq WS < 10.8$	$10.8 \leq WS < 13.6$	$WS \geq 13.6$	
SO <sub>2</sub>	ppb	$0 \leq C < 1$	$1 \leq C < 5$	$5 \leq C < 10$	$10 \leq C < 57$	$57 \leq C < 172$	$C \geq 172$	
NO <sub>2</sub>	ppb	$0 \leq C < 5$	$5 \leq C < 15$	$15 \leq C < 30$	$30 \leq C < 100$	$100 \leq C < 212$	$C \geq 212$	
O <sub>3</sub>	ppb	$0 \leq C < 10$	$10 \leq C < 20$	$20 \leq C < 40$	$40 \leq C < 60$	$60 \leq C < 82$	$C \geq 82$	
PM <sub>2.5</sub>	$\mu\text{g}/\text{m}^3$	$0 \leq C < 2$	$2 \leq C < 4$	$4 \leq C < 10$	$10 \leq C < 20$	$20 \leq C < 30$	$C \geq 30$	

### Monthly Update

- Achieved >90% of scheduled uptime for all parameters
- All parameters achieved >95% of total uptime
- Downtime of 4% due to routine daily Internal Zeroes and Spans

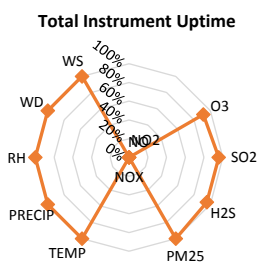
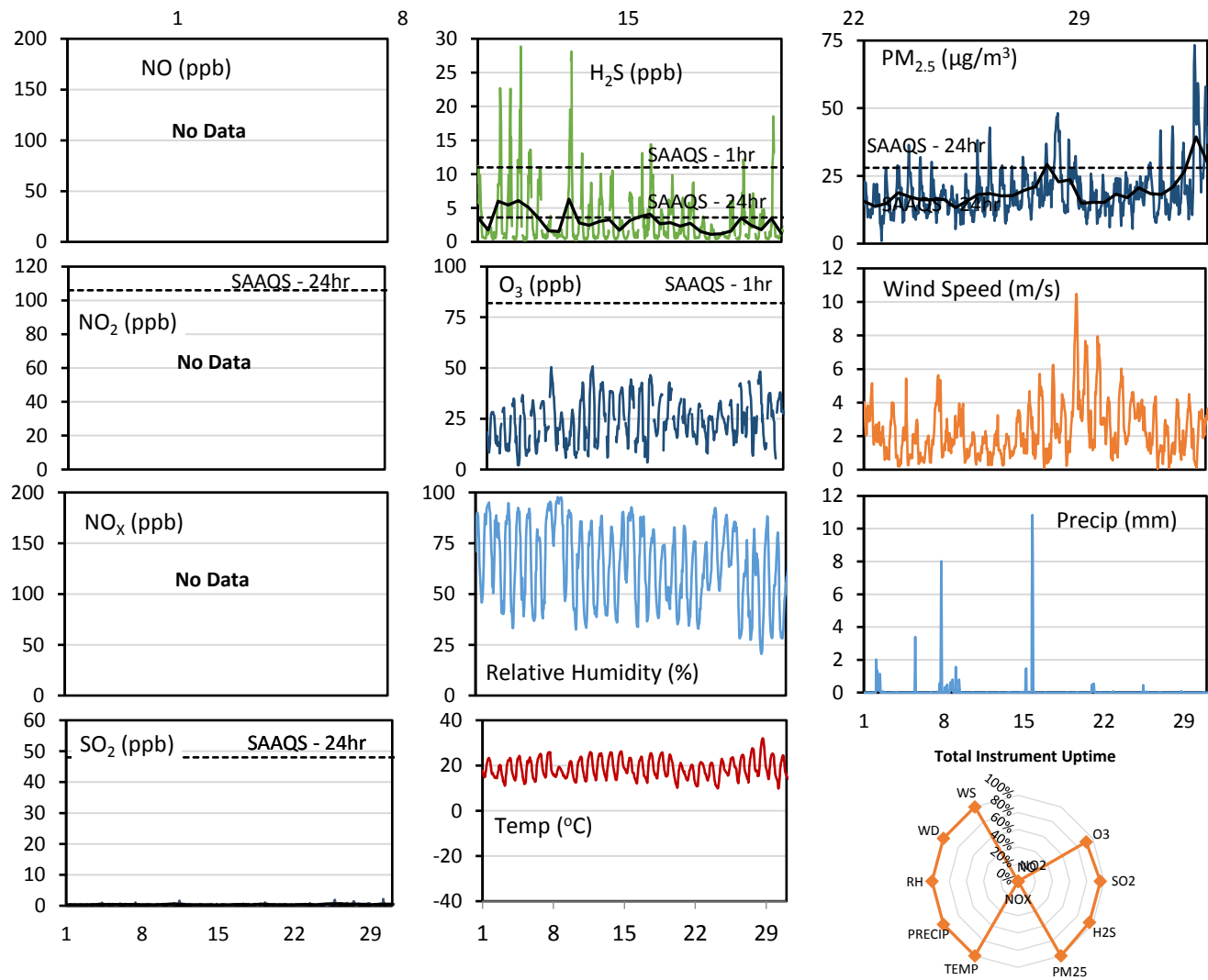
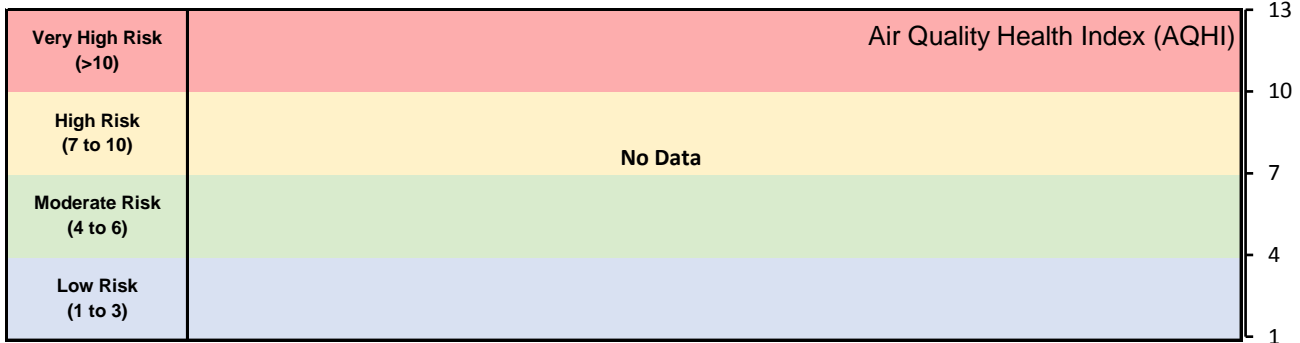
### Exceedance Summary (24- Hour Average - Exceedances Highlighted)

Exceedance Time	AQHI	NO <sub>2</sub> ppb	NO ppb	SO <sub>2</sub> ppb	O <sub>3</sub> ppb	NO <sub>x</sub> ppb	PM <sub>2.5</sub> $\mu\text{g}/\text{m}^3$	Temp °C	WD deg	WS m/s
Aug-17	4.1	3.0	0.4	1.0	38.7	3.4	<b>38.0</b>	19.8	208.6	2.1
Aug-18	3.2	4.2	1.5	0.5	29.2	5.8	<b>28.4</b>	17.7	136.9	1.5
Aug-30	3.2	1.7	1.6	0.8	33.9	3.3	<b>28.1</b>	20.4	115.6	5.4

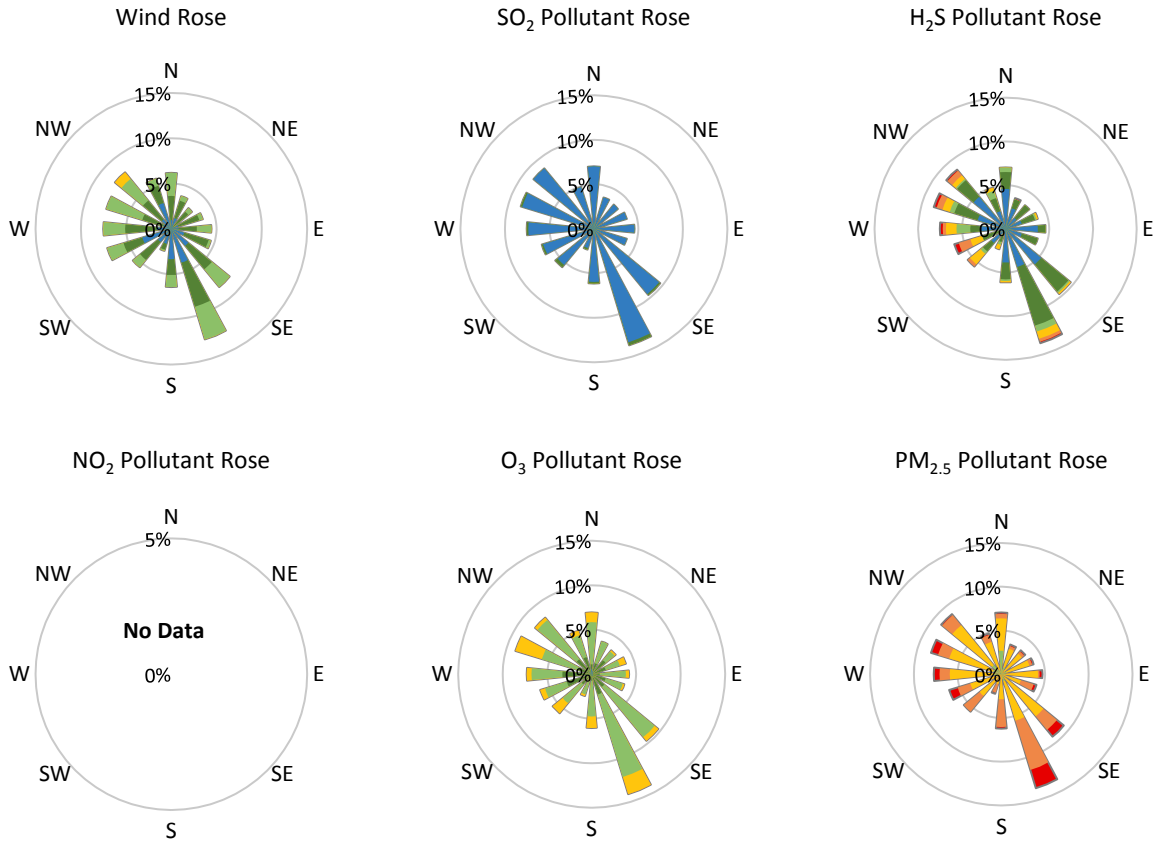
## GPAZ Yorkton Station - August 2017 Summary Report

Pollutants		Month Records		24-Hour Records				1-Hour Records			
Name	Conc. Unit	Avg. Conc.	Total Uptime	Maximum		SAAQS Standard	Exceed Days	Maximum		SAAQS Standard	Exceed Hours
				Conc.	Time			Conc.	Time		
NO	ppb	No Data	No Data	No Data	No Data	-	No Data	No Data	No Data	-	No Data
NO <sub>2</sub>	ppb	No Data	No Data	No Data	No Data	106	No Data	No Data	No Data	159	No Data
NO <sub>x</sub>	ppb	No Data	No Data	No Data	No Data	-	No Data	No Data	No Data	-	No Data
SO <sub>2</sub>	ppb	0.4	96%	0.6	Aug-11	48	0	2.2	Aug-30 04:00	172	0
H <sub>2</sub> S	ppb	3.0	96%	6.3	Aug-10	3.6	7	28.9	Aug-05 06:00	11	31
O <sub>3</sub>	ppb	25.0	91%	34.6	Aug-31	-	-	50.8	Aug-11 17:00	82	0
PM <sub>2.5</sub>	µg/m <sup>3</sup>	19.4	100%	39.4	Aug-30	28	3	73.3	Aug-29 21:00	-	-

SAAQS: Saskatchewan Ambient Air Quality Standards



\* colored lines indicate 1-hr concentration data for all parameters; solid black lines indicate 24-hr concentrations for PM<sub>2.5</sub>, NO<sub>2</sub>, SO<sub>2</sub>, and H<sub>2</sub>S



Parameters	Unit	Color Code for Wind Speed and Pollution Concentration Class					
Wind Speed	m/s	0.3 ≤ WS < 1.4	1.4 ≤ WS < 3.1	3.1 ≤ WS < 7.8	7.8 ≤ WS < 10.8	10.8 ≤ WS < 13.6	WS ≥ 13.6
SO <sub>2</sub>	ppb	0 ≤ C < 1	1 ≤ C < 5	5 ≤ C < 10	10 ≤ C < 57	57 ≤ C < 172	C ≥ 172
NO <sub>2</sub>	ppb	0 ≤ C < 5	5 ≤ C < 15	15 ≤ C < 30	30 ≤ C < 100	100 ≤ C < 212	C ≥ 212
H <sub>2</sub> S	ppb	0 ≤ C < 1	1 ≤ C < 3.6	3.6 ≤ C < 5	5 ≤ C < 8	8 ≤ C < 10.8	C ≥ 10.8
O <sub>3</sub>	ppb	0 ≤ C < 10	10 ≤ C < 20	20 ≤ C < 40	40 ≤ C < 60	60 ≤ C < 82	C ≥ 82
PM <sub>2.5</sub>	µg/m <sup>3</sup>	0 ≤ C < 2	2 ≤ C < 4	4 ≤ C < 10	10 ≤ C < 20	20 ≤ C < 30	C ≥ 30

**Monthly Update**

- Achieved >95.6% of scheduled uptime for all parameters except NOx
- Achieved 96% of total uptime for SO<sub>2</sub> and H<sub>2</sub>S, and 91% for O<sub>3</sub>
- Downtime of 4% due to routine daily Internal Zeroes and Spans
- NOx invalidated due to operational issues