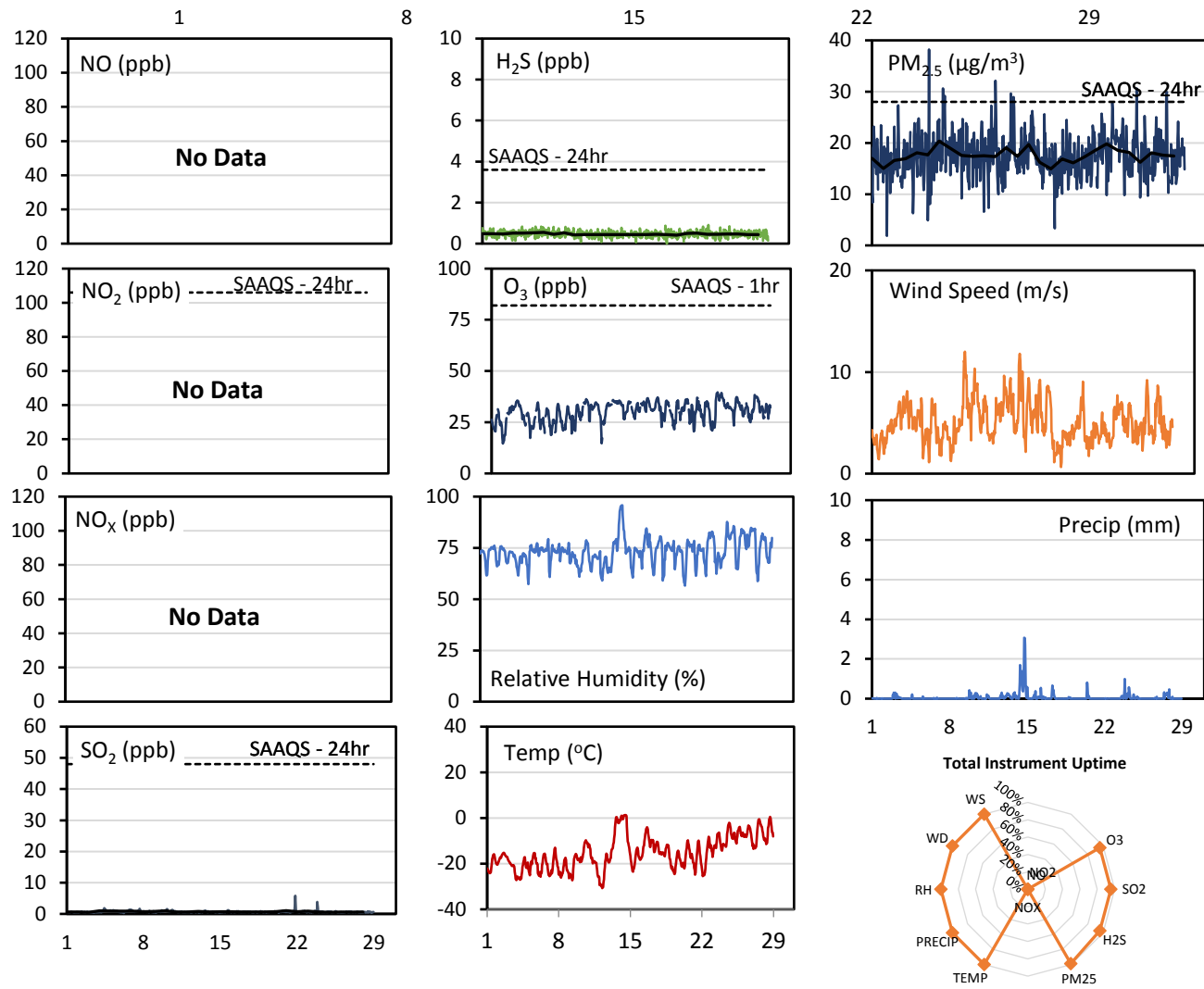
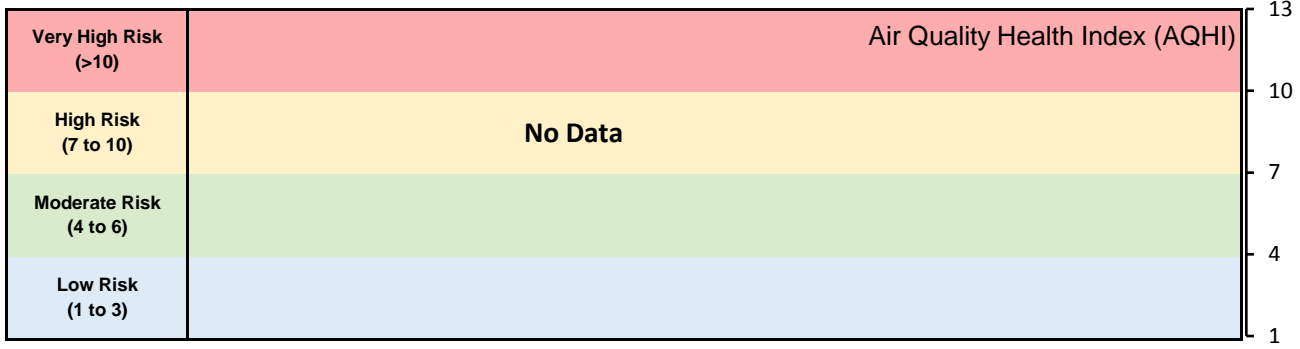


## GPAZ Pense Station - February 2018 Summary Report

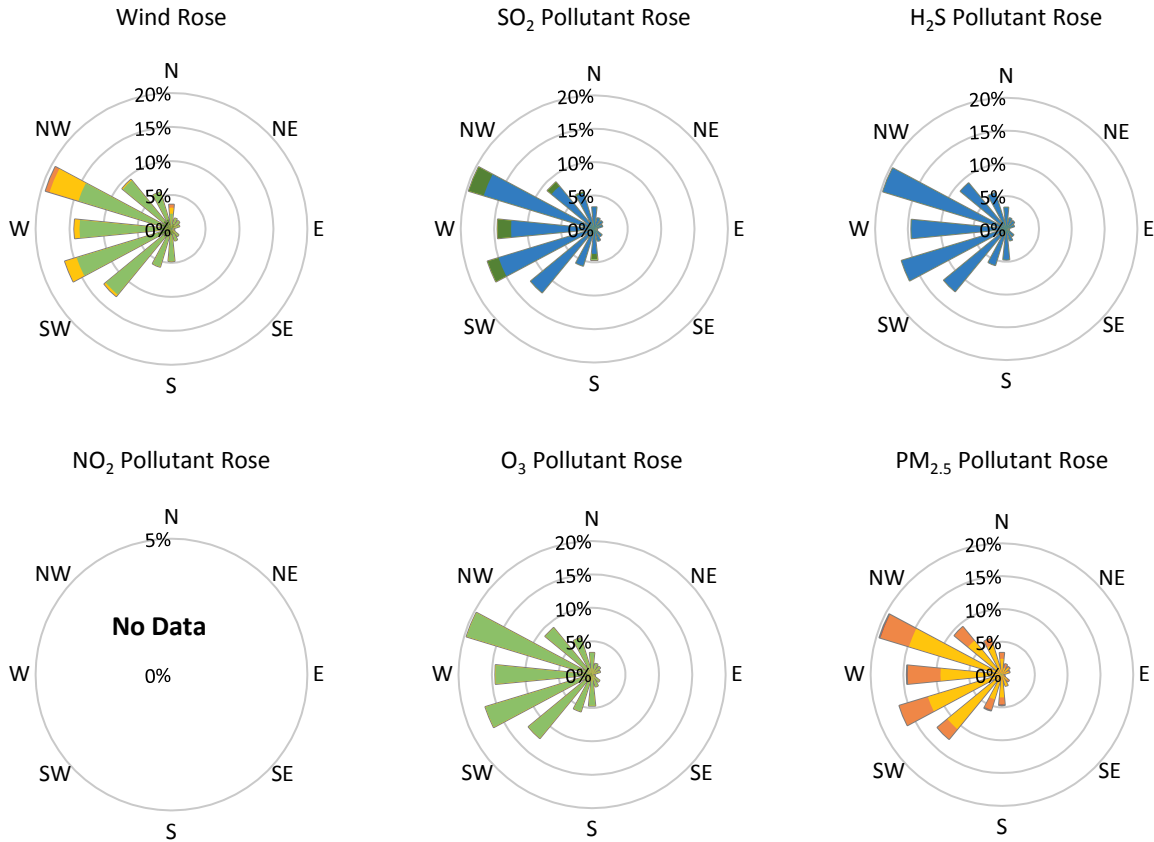
Pollutants		Month Records		24-Hour Records				1-Hour Records			
Name	Conc. Unit	Avg. Conc.	Uptime	Maximum		SAAQS Standard	Exceed Days	Maximum		SAAQS Standard	Exceed Hours
				Conc.	Time			Conc.	Time		
NO	ppb	No Data	No Data	No Data	No Data	-	No Data	No Data	No Data	-	No Data
NO <sub>2</sub>	ppb	No Data	No Data	No Data	No Data	106	No Data	No Data	No Data	159	No Data
NO <sub>x</sub>	ppb	No Data	No Data	No Data	No Data	-	No Data	No Data	No Data	-	No Data
SO <sub>2</sub>	ppb	0.7	96%	1.0	Feb-21	48	0	5.8	Feb-21 20:00	172	0
H <sub>2</sub> S	ppb	0.5	96%	0.6	Feb-07	3.6	0	0.9	Feb-23 03:00	11	0
O <sub>3</sub>	ppb	30.0	96%	34.9	Feb-13	-	-	39.6	Feb-23 16:00	82	0
PM <sub>2.5</sub>	µg/m <sup>3</sup>	17.6	99%	20.3	Feb-07	28	0	38.2	Feb-06 02:00	-	-

SAAQS: Saskatchewan Ambient Air Quality Standards



\* colored lines indicate 1-hr concentration data for all parameters; solid black lines indicate 24-hr concentrations for PM<sub>2.5</sub>, NO<sub>2</sub>, SO<sub>2</sub>, and H<sub>2</sub>S

**GPAZ Pense Station - February 2018 Summary Report**



Parameters	Unit	Color Code for Wind Speed and Pollution Concentration Class						
		0.3 ≤ WS < 1.4	1.4 ≤ WS < 3.1	3.1 ≤ WS < 7.8	7.8 ≤ WS < 10.8	10.8 ≤ WS < 13.6	WS ≥ 13.6	
SO <sub>2</sub>	ppb	0 ≤ C < 1	1 ≤ C < 5	5 ≤ C < 10	10 ≤ C < 57	57 ≤ C < 172	C ≥ 172	
NO <sub>2</sub>	ppb	0 ≤ C < 5	5 ≤ C < 15	15 ≤ C < 30	30 ≤ C < 100	100 ≤ C < 212	C ≥ 212	
H <sub>2</sub> S	ppb	0 ≤ C < 1	1 ≤ C < 3.6	3.6 ≤ C < 5	5 ≤ C < 8	8 ≤ C < 10.8	C ≥ 10.8	
O <sub>3</sub>	ppb	0 ≤ C < 10	10 ≤ C < 20	20 ≤ C < 40	40 ≤ C < 60	60 ≤ C < 82	C ≥ 82	
PM <sub>2.5</sub>	µg/m <sup>3</sup>	0 ≤ C < 2	2 ≤ C < 4	4 ≤ C < 10	10 ≤ C < 20	20 ≤ C < 30	C ≥ 30	

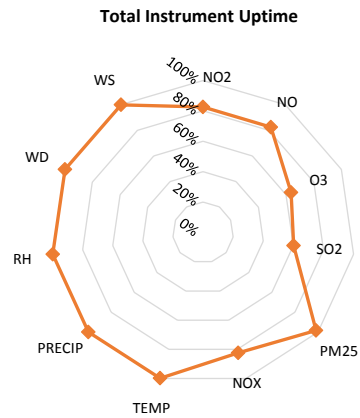
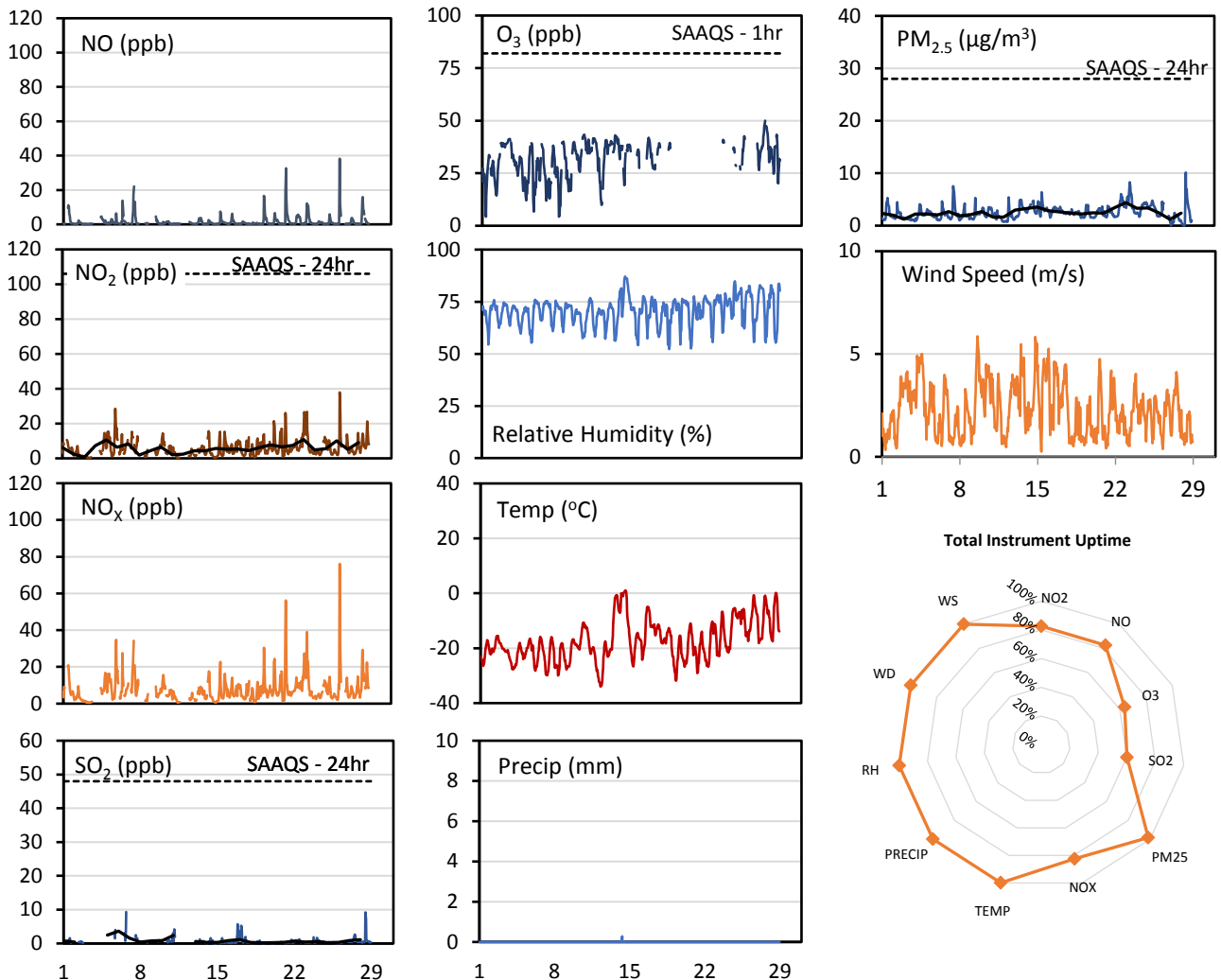
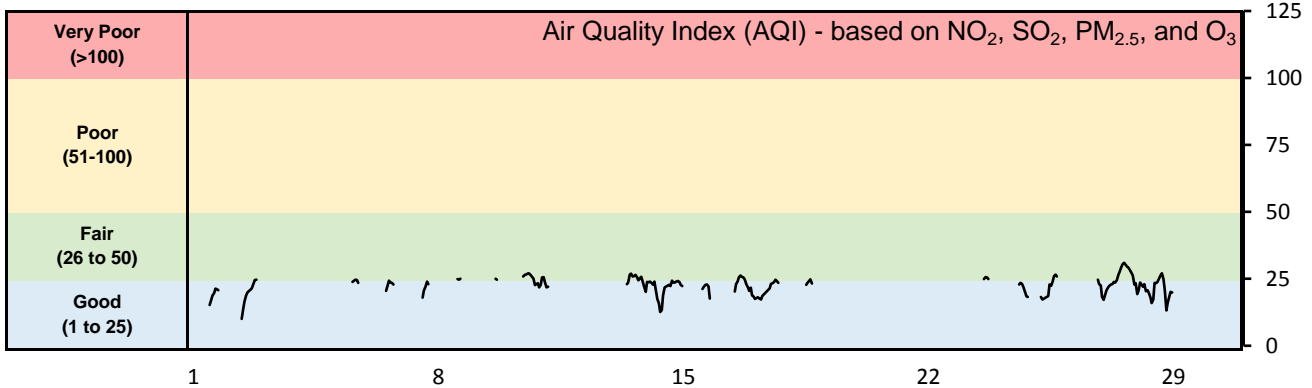
**Monthly Update**

- Achieved >95.7% of total uptime for all parameters except NO<sub>x</sub> (0%)
- Achieved >98.7% of scheduled uptime for all parameters except NO<sub>x</sub> (0%)
- Downtime of 4% due to routine daily internal zeroes and spans
- NO<sub>x</sub> monitor was being serviced

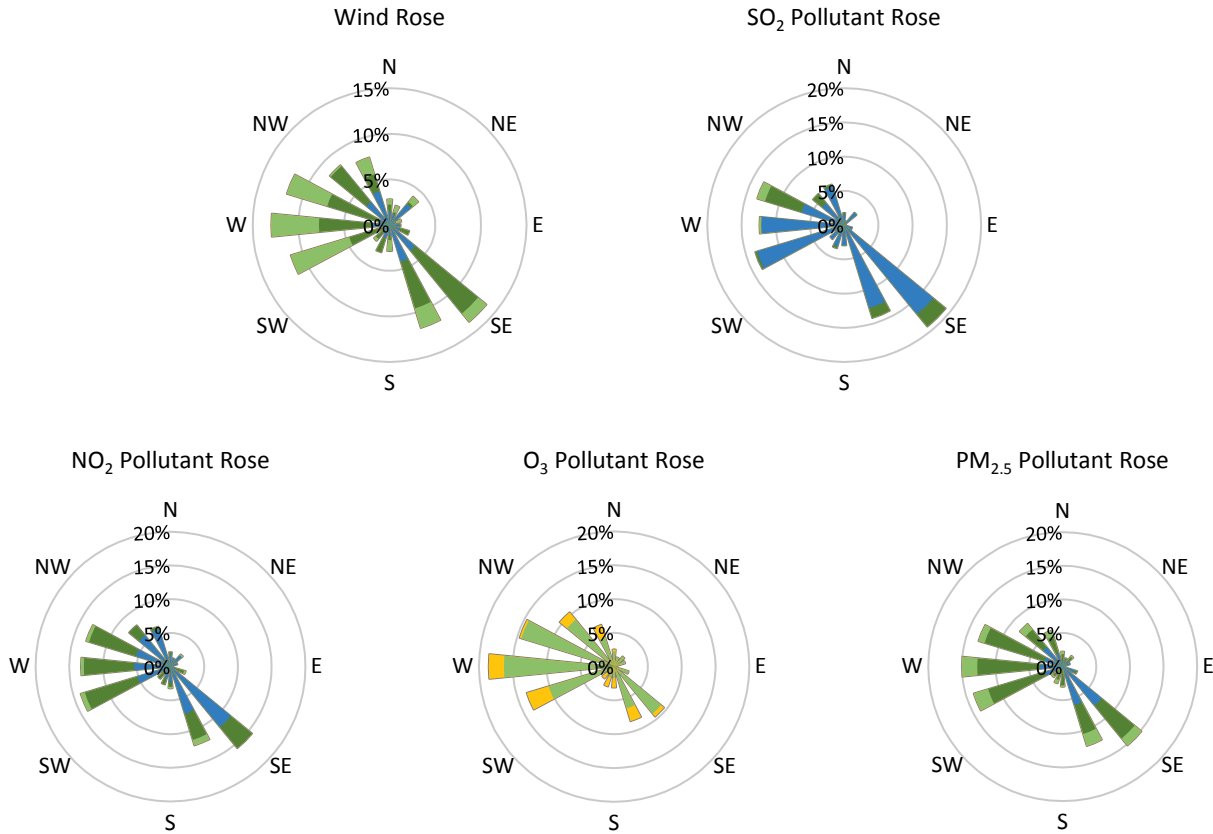
## GPAZ East Regina Station - February 2018 Summary Report

Pollutants		Month Records		24-Hour Records				1-Hour Records			
Name	Conc. Unit	Avg. Conc.	Uptime	Maximum		SAAQS Standard	Exceed Days	Maximum		SAAQS Standard	Exceed Hours
				Conc.	Time			Conc.	Time		
NO	ppb	1.7	82%	4.8	Feb-07	-	-	38.2	Feb-26 07:00	-	-
NO <sub>2</sub>	ppb	6.0	83%	10.8	Feb-23	106	0	37.9	Feb-26 07:00	159	0
NO <sub>x</sub>	ppb	7.6	82%	14.5	Feb-26	-	-	76.1	Feb-26 07:00	-	-
SO <sub>2</sub>	ppb	0.6	60%	3.7	Feb-06	48	0	9.3	Feb-06 17:00	172	0
O <sub>3</sub>	ppb	31.7	64%	40.2	Feb-23	-	-	50.0	Feb-27 14:00	82	0
PM <sub>2.5</sub>	µg/m <sup>3</sup>	2.5	98%	4.4	Feb-23	28	0	10.1	Feb-28 10:00	-	-

SAAQS: Saskatchewan Ambient Air Quality Standards



\* colored lines indicate 1-hr concentration data for all parameters; solid black lines indicate 24-hr concentrations for PM<sub>2.5</sub>, NO<sub>2</sub>, and SO<sub>2</sub>



Parameters	Unit	Color Code for Wind Speed and Pollution Concentration Class						
		$0.3 \leq WS < 1.4$	$1.4 \leq WS < 3.1$	$3.1 \leq WS < 7.8$	$7.8 \leq WS < 10.8$	$10.8 \leq WS < 13.6$	$WS \geq 13.6$	
SO <sub>2</sub>	ppb	$0 \leq C < 1$	$1 \leq C < 5$	$5 \leq C < 10$	$10 \leq C < 57$	$57 \leq C < 172$	$C \geq 172$	
NO <sub>2</sub>	ppb	$0 \leq C < 5$	$5 \leq C < 15$	$15 \leq C < 30$	$30 \leq C < 100$	$100 \leq C < 212$	$C \geq 212$	
O <sub>3</sub>	ppb	$0 \leq C < 10$	$10 \leq C < 20$	$20 \leq C < 40$	$40 \leq C < 60$	$60 \leq C < 82$	$C \geq 82$	
PM <sub>2.5</sub>	$\mu\text{g}/\text{m}^3$	$0 \leq C < 2$	$2 \leq C < 4$	$4 \leq C < 10$	$10 \leq C < 20$	$20 \leq C < 30$	$C \geq 30$	

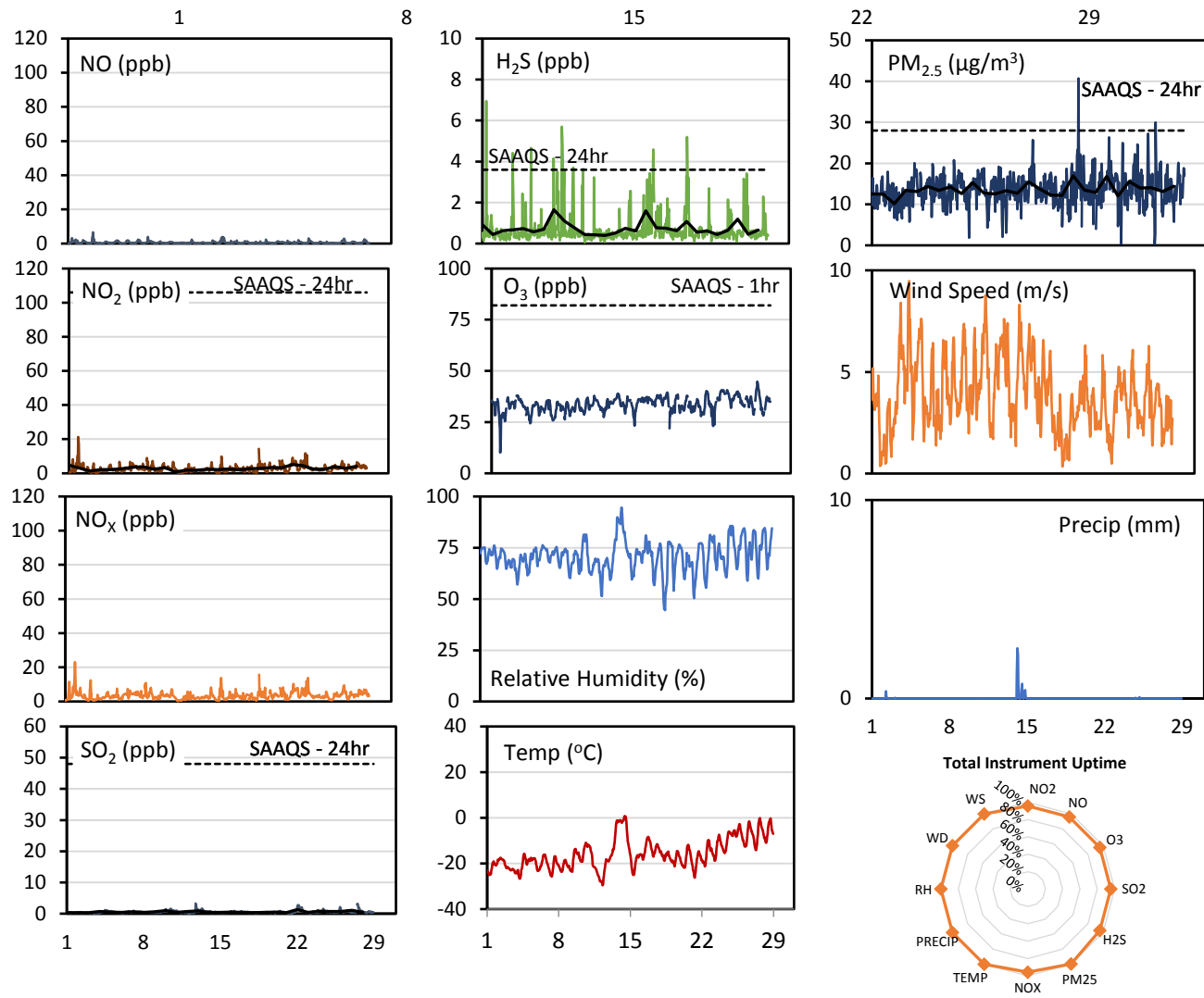
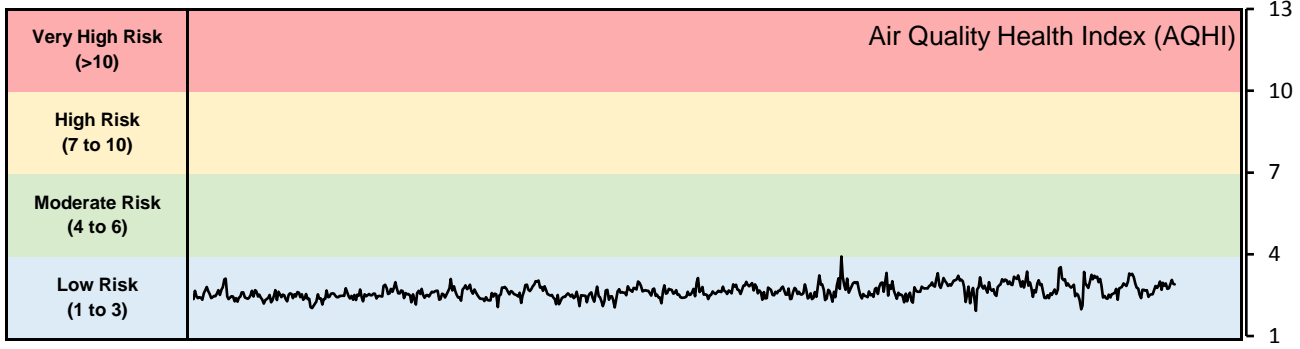
**Monthly Update**

- Achieved scheduled uptime of 86.2% for NO<sub>x</sub>, 66.0% for O<sub>3</sub>, 62.9% for SO<sub>2</sub>, and 98.4% for PM<sub>2.5</sub>.
- Achieved total uptime of 82.4% for NO<sub>x</sub>, 66.0% for O<sub>3</sub>, 60.1% for SO<sub>2</sub>, and 98.4% for PM<sub>2.5</sub>.
- Downtime of 4% a results of daily Internal Zeros and Spans.

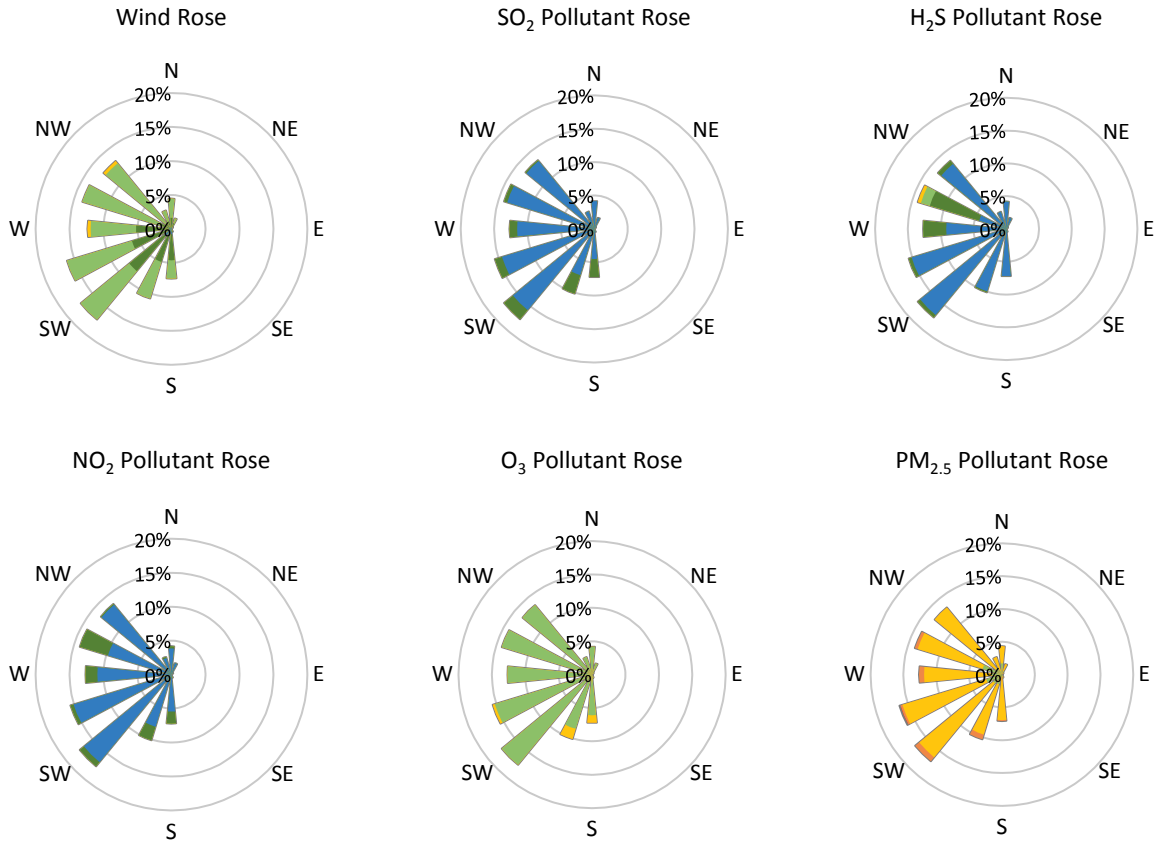
## GPAZ Yorkton Station - February 2018 Summary Report

Pollutants		Month Records		24-Hour Records				1-Hour Records			
Name	Conc. Unit	Avg. Conc.	Uptime	Maximum		SAAQS Standard	Exceed Days	Maximum		SAAQS Standard	Exceed Hours
				Conc.	Time			Conc.	Time		
NO	ppb	0.6	96%	1.3	Feb-15	-	-	6.6	Feb-03 08:00	-	-
NO <sub>2</sub>	ppb	2.9	96%	5.2	Feb-22	106	0	21.3	Feb-01 21:00	159	0
NO <sub>x</sub>	ppb	3.5	96%	5.8	Feb-22	-	-	23.1	Feb-01 21:00	-	-
SO <sub>2</sub>	ppb	0.6	96%	1.3	Feb-22	48	0	3.3	Feb-12 18:00	172	0
H <sub>2</sub> S	ppb	0.7	96%	1.7	Feb-08	3.6	0	7.0	Feb-01 09:00	11	0
O <sub>3</sub>	ppb	33.6	96%	39.1	Feb-24	-	-	44.8	Feb-27 16:00	82	0
PM <sub>2.5</sub>	µg/m <sup>3</sup>	13.6	100%	17.0	Feb-19	28	0	40.7	Feb-19 11:00	-	-

SAAQS: Saskatchewan Ambient Air Quality Standards



\* colored lines indicate 1-hr concentration data for all parameters; solid black lines indicate 24-hr concentrations for PM<sub>2.5</sub>, NO<sub>2</sub>, SO<sub>2</sub>, and H<sub>2</sub>S



Parameters	Unit	Color Code for Wind Speed and Pollution Concentration Class					
		0.3 ≤ WS < 1.4	1.4 ≤ WS < 3.1	3.1 ≤ WS < 7.8	7.8 ≤ WS < 10.8	10.8 ≤ WS < 13.6	WS ≥ 13.6
SO <sub>2</sub>	ppb	0 ≤ C < 1	1 ≤ C < 5	5 ≤ C < 10	10 ≤ C < 57	57 ≤ C < 172	C ≥ 172
NO <sub>2</sub>	ppb	0 ≤ C < 5	5 ≤ C < 15	15 ≤ C < 30	30 ≤ C < 100	100 ≤ C < 212	C ≥ 212
H <sub>2</sub> S	ppb	0 ≤ C < 1	1 ≤ C < 3.6	3.6 ≤ C < 5	5 ≤ C < 8	8 ≤ C < 10.8	C ≥ 10.8
O <sub>3</sub>	ppb	0 ≤ C < 10	10 ≤ C < 20	20 ≤ C < 40	40 ≤ C < 60	60 ≤ C < 82	C ≥ 82
PM <sub>2.5</sub>	µg/m <sup>3</sup>	0 ≤ C < 2	2 ≤ C < 4	4 ≤ C < 10	10 ≤ C < 20	20 ≤ C < 30	C ≥ 30

**Monthly Update**

- Achieved >95.7% of total uptime for all parameters
- Achieved >99.7% of scheduled uptime for all parameters
- Downtime of 4% due to routine daily internal zeroes and spans