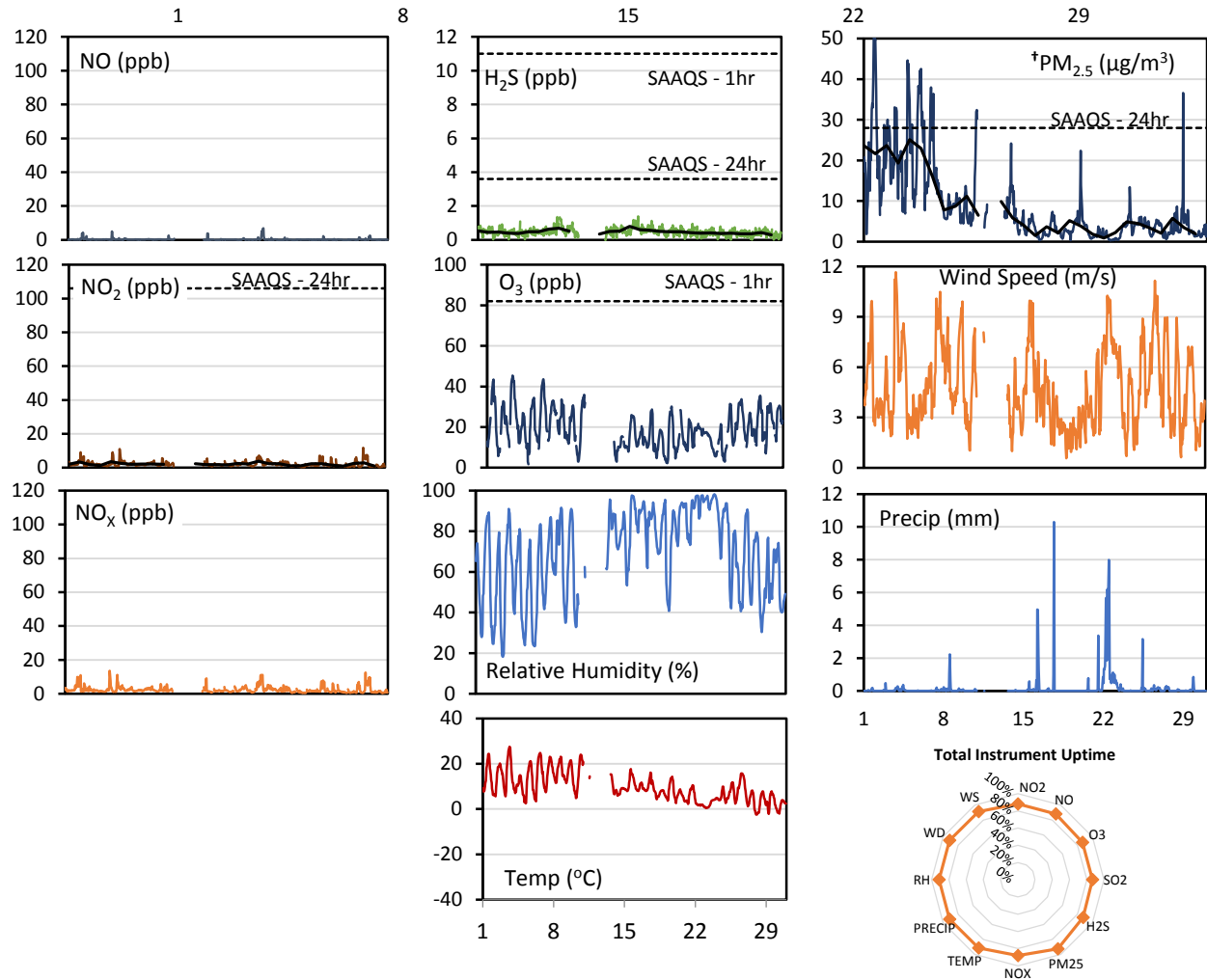
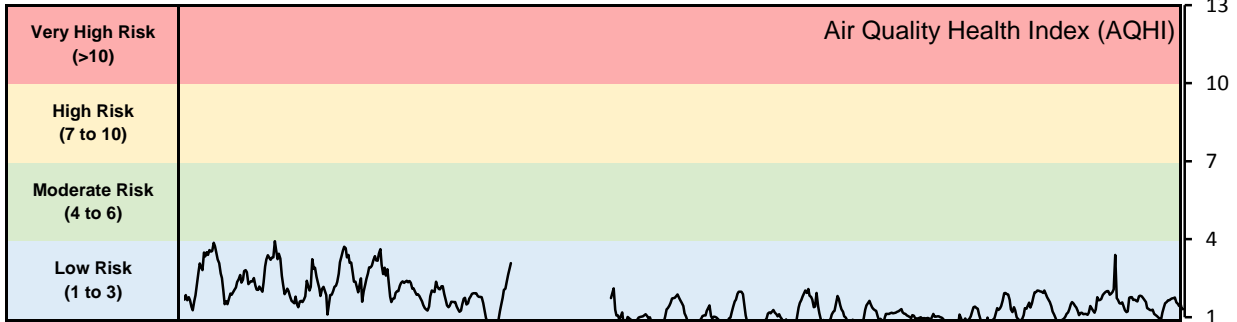


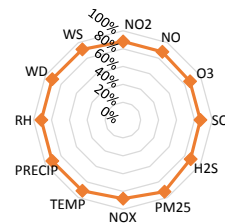
GPAZ Pense Station - September 2018 Summary Report

Pollutants		Month Records		24-Hour Records				1-Hour Records			
Name	Conc. Unit	Avg. Conc.	Total Uptime	Maximum		SAAQS Standard	Exceed Days	Maximum		SAAQS Standard	Exceed Hours
				Conc.	Time			Conc.	Time		
NO	ppb	0.3	88%	1.4	Sep-19	-	-	6.9	Sep-19 08:00	-	-
NO ₂	ppb	2.1	88%	3.8	Sep-19	106	0	11.7	Sep-28 22:00	159	0
NO _x	ppb	2.4	88%	5.2	Sep-19	-	-	13.6	Sep-05 03:00	-	-
SO ₂	ppb	0.3	87%	0.5	Sep-02	48	0	1.1	Sep-06 12:00	172	0
H ₂ S	ppb	0.5	88%	0.8	Sep-16	3.6	0	1.4	Sep-16 20:00	11	0
O ₃	ppb	19.1	87%	30.0	Sep-03	-	-	45.4	Sep-03 14:00	82	0
†PM _{2.5}	µg/m ³	8.8	93%	25.1	Sep-05	28	0	51.6	Sep-01 22:00	-	-

SAAQS: Saskatchewan Ambient Air Quality Standards



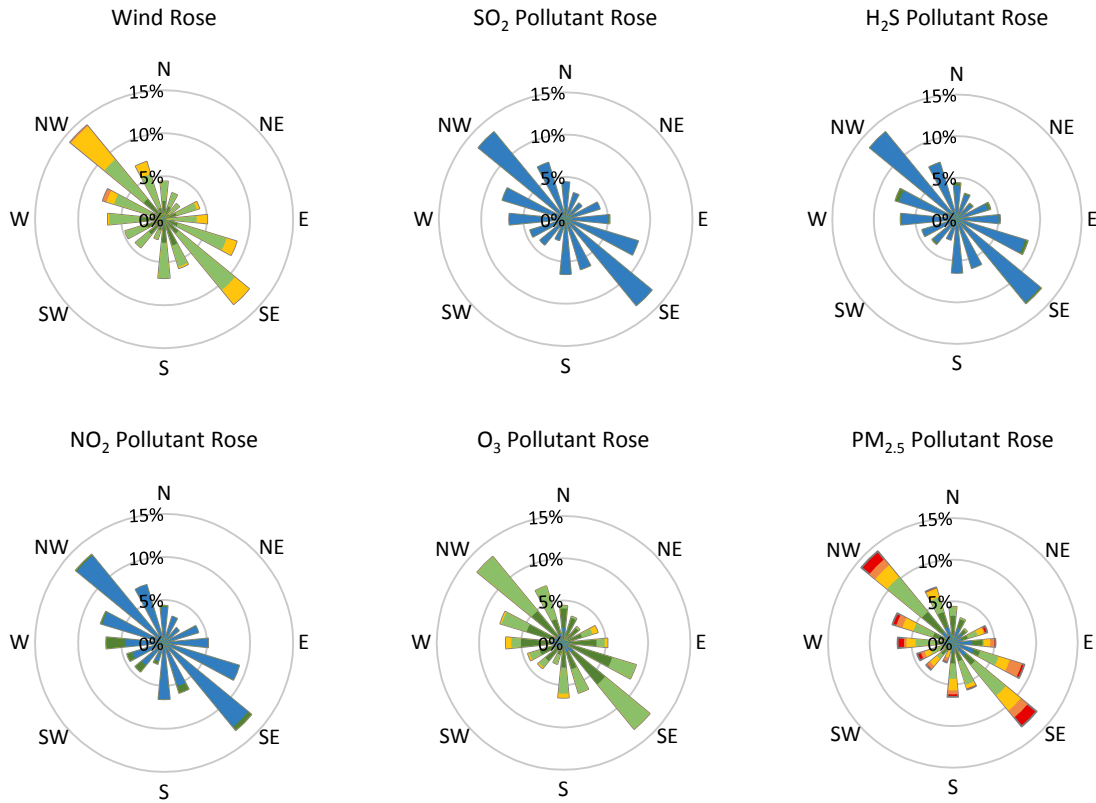
Total Instrument Uptime



* colored lines indicate 1-hr concentration data for all parameters; solid black lines indicate 24-hr concentrations for PM_{2.5}, NO₂, SO₂, and H₂S

† Particulate data is unable to be validated as a leak was discovered during a verification; however, data is representative of the general conditions

GPAZ Pense Station - September 2018 Summary Report



Parameters	Unit	Color Code for Wind Speed and Pollution Concentration Class						
Wind Speed	m/s	$0.3 \leq WS < 1.4$	$1.4 \leq WS < 3.1$	$3.1 \leq WS < 7.8$	$7.8 \leq WS < 10.8$	$10.8 \leq WS < 13.6$	$13.6 \leq WS < 17.2$	$WS \geq 17.2$
SO ₂	ppb	$0 \leq C < 1$	$1 \leq C < 5$	$5 \leq C < 10$	$10 \leq C < 57$	$57 \leq C < 172$	$172 \leq C < 212$	$C \geq 212$
NO ₂	ppb	$0 \leq C < 5$	$5 \leq C < 15$	$15 \leq C < 30$	$30 \leq C < 100$	$100 \leq C < 212$	$212 \leq C < 212$	$C \geq 212$
H ₂ S	ppb	$0 \leq C < 1$	$1 \leq C < 3.6$	$3.6 \leq C < 5$	$5 \leq C < 8$	$8 \leq C < 10.8$	$10.8 \leq C < 10.8$	$C \geq 10.8$
O ₃	ppb	$0 \leq C < 10$	$10 \leq C < 20$	$20 \leq C < 40$	$40 \leq C < 60$	$60 \leq C < 82$	$82 \leq C < 82$	$C \geq 82$
PM _{2.5}	µg/m ³	$0 \leq C < 2$	$2 \leq C < 4$	$4 \leq C < 10$	$10 \leq C < 20$	$20 \leq C < 30$	$30 \leq C < 30$	$C \geq 30$

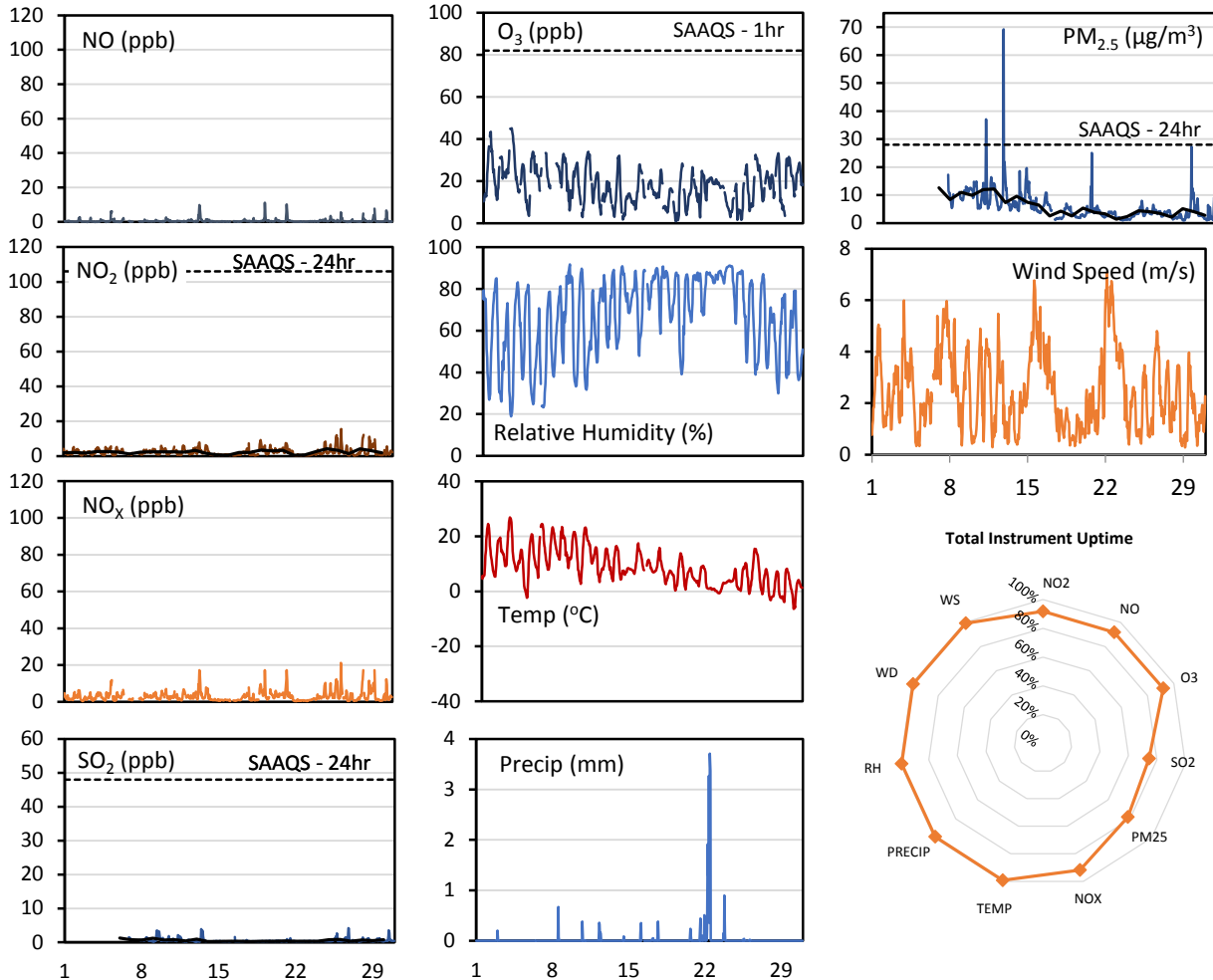
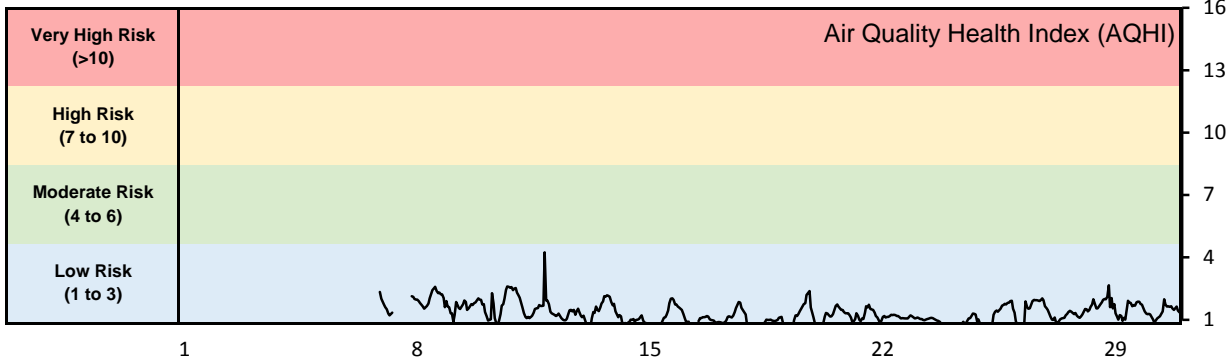
Monthly Update

- Achieved >90% of scheduled uptime for all parameters
- Downtime of 4% due to routine daily internal zeroes and spans
- Station did not have power between Sept 11 and Sept 13 due to a site wide power outage
- Calibration performed on Sept 11 (NO_x) and Sept 13 (All monitors)
- Particulate data was unable to be validated as a leak was discovered in the analyzer during a verification; however, data is representative of the general conditions and is included in these results

GPAZ East Regina Station - September 2018 Summary Report

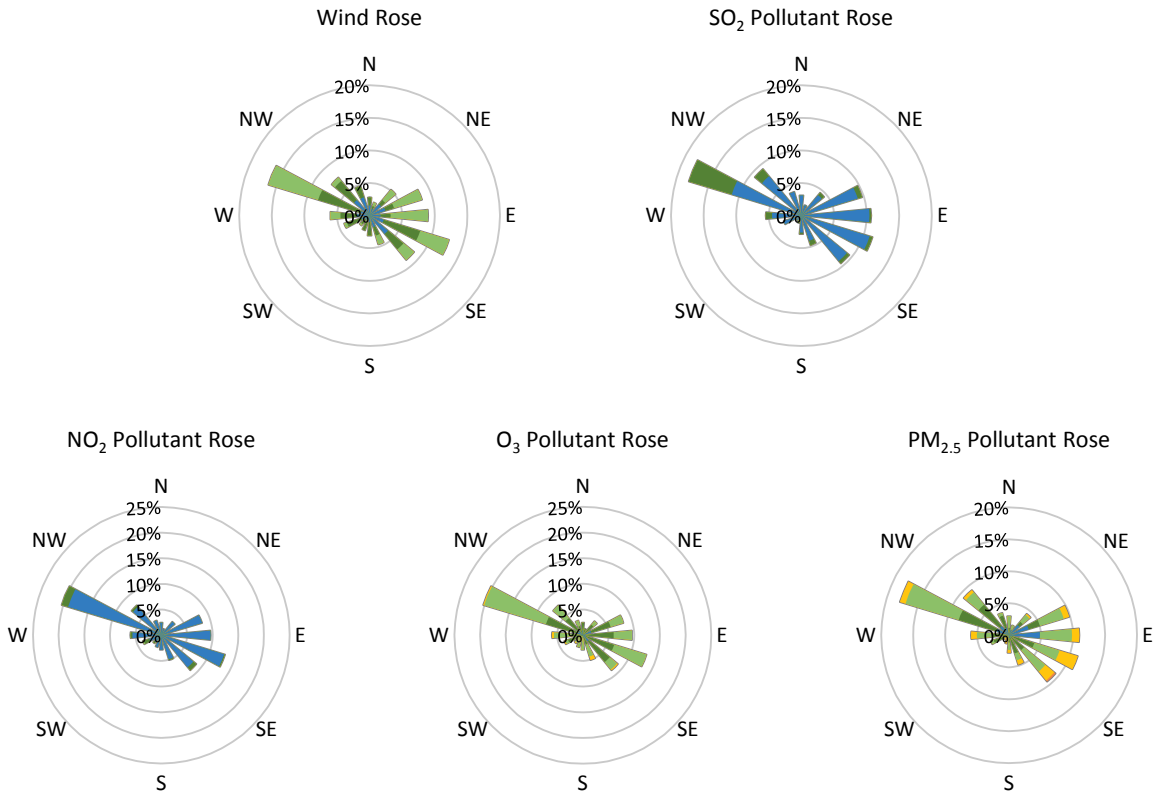
Pollutants		Month Records		24-Hour Records				1-Hour Records			
Name	Conc. Unit	Avg. Conc.	Total Uptime	Maximum		SAAQS Standard	Exceed Days	Maximum		SAAQS Standard	Exceed Hours
				Conc.	Time			Conc.	Time		
NO	ppb	0.6	92%	1.8	Sep-13	-	-	11.1	Sep-19 08:00	-	-
NO ₂	ppb	2.4	92%	4.3	Sep-25	106	0	15.6	Sep-26 07:00	159	0
NO _x	ppb	2.9	92%	5.1	Sep-13	-	-	21.2	Sep-26 07:00	-	-
SO ₂	ppb	0.5	75%	1.2	Sep-06	48	0	4.2	Sep-26 19:00	172	0
O ₃	ppb	18.1	92%	33.0	Sep-03	-	-	45.1	Sep-03 15:00	82	0
PM _{2.5}	µg/m ³	5.7	78%	12.6	Sep-06	28	0	69.2	Sep-11 20:00	-	-

SAAQS: Saskatchewan Ambient Air Quality Standards



* colored lines indicate 1-hr concentration data for all parameters; solid black lines indicate 24-hr concentrations for PM_{2.5}, NO₂, and SO₂

GPAZ East Regina Station - September 2018 Summary Report



Parameters	Unit	Color Code for Wind Speed and Pollution Concentration Class						
Wind Speed	m/s	$0.3 \leq WS < 1.4$	$1.4 \leq WS < 3.1$	$3.1 \leq WS < 7.8$	$7.8 \leq WS < 10.8$	$10.8 \leq WS < 13.6$	$WS \geq 13.6$	
SO ₂	ppb	$0 \leq C < 1$	$1 \leq C < 5$	$5 \leq C < 10$	$10 \leq C < 57$	$57 \leq C < 172$	$C \geq 172$	
NO ₂	ppb	$0 \leq C < 5$	$5 \leq C < 15$	$15 \leq C < 30$	$30 \leq C < 100$	$100 \leq C < 212$	$C \geq 212$	
O ₃	ppb	$0 \leq C < 10$	$10 \leq C < 20$	$20 \leq C < 40$	$40 \leq C < 60$	$60 \leq C < 82$	$C \geq 82$	
PM _{2.5}	$\mu\text{g}/\text{m}^3$	$0 \leq C < 2$	$2 \leq C < 4$	$4 \leq C < 10$	$10 \leq C < 20$	$20 \leq C < 30$	$C \geq 30$	

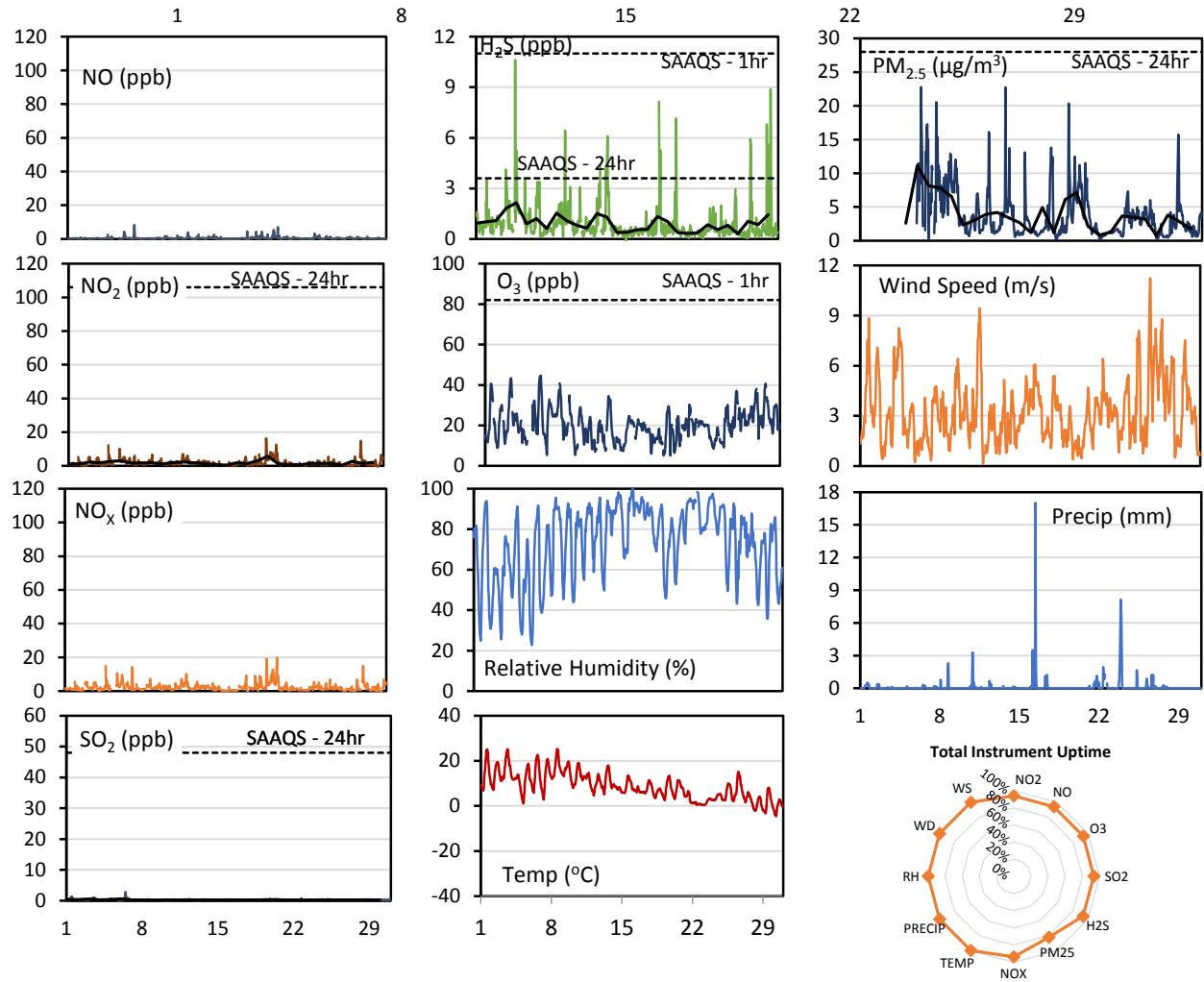
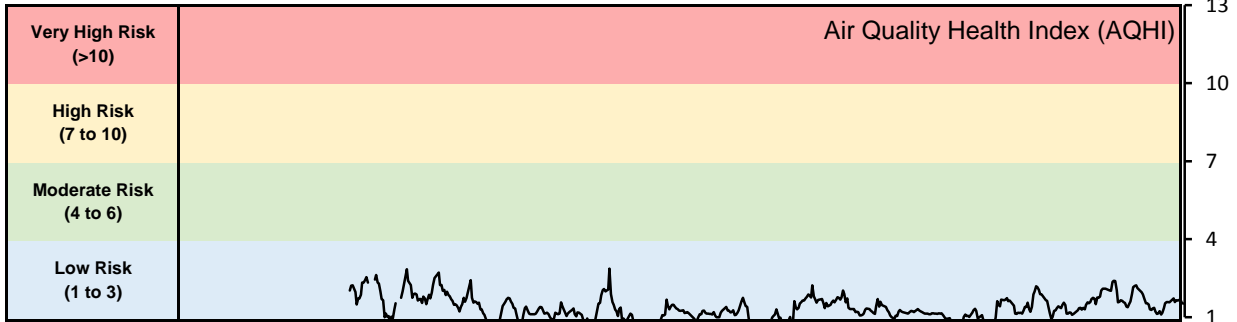
Monthly Update

- Achieved >95% of scheduled uptime for all parameters except SO₂ and PM_{2.5} (78% respectively)
- SO₂ analyzer and nephelometer were installed on Sept 6 after being serviced
- Downtime of 4% results from routine daily internal zeroes and spans
- Calibration performed Sept 6 and Sept 7

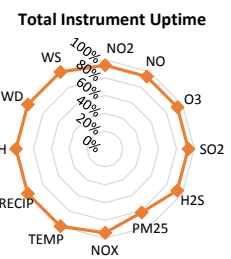
GPAZ Yorkton Station - September 2018 Summary Report

Pollutants		Month Records		24-Hour Records				1-Hour Records			
Name	Conc. Unit	Avg. Conc.	Total Uptime	Maximum		SAAQS Standard	Exceed Days	Maximum		SAAQS Standard	Exceed Hours
				Conc.	Time			Conc.	Time		
NO	ppb	0.5	94%	1.7	Sep-20	-	-	8.3	Sep-07 07:00	-	-
NO ₂	ppb	1.7	94%	5.7	Sep-20	106	0	16.3	Sep-19 20:00	159	0
NO _x	ppb	2.2	94%	7.4	Sep-20	-	-	19.7	Sep-20 19:00	-	-
SO ₂	ppb	0.3	93%	0.6	Sep-06	48	0	2.8	Sep-06 11:00	172	0
H ₂ S	ppb	0.9	93%	2.1	Sep-05	3.6	0	10.6	Sep-04 21:00	11	0
O ₃	ppb	20.1	94%	28.1	Sep-28	-	-	44.6	Sep-06 16:00	82	0
PM _{2.5}	µg/m ³	3.9	82%	11.2	Sep-06	28	0	22.8	Sep-06 08:00	-	-

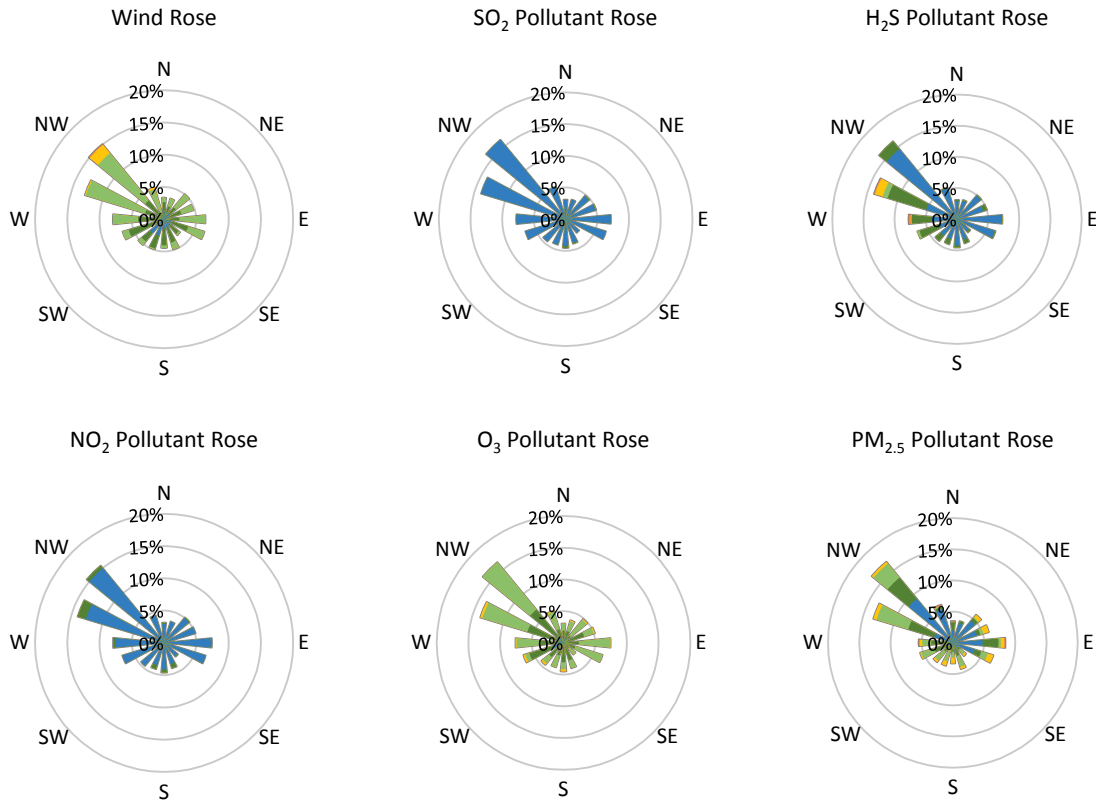
SAAQS: Saskatchewan Ambient Air Quality Standards



* colored lines indicate 1-hr concentration data for all parameters; solid black lines indicate 24-hr concentrations for PM_{2.5}, NO₂, SO₂, and H₂S



GPAZ Yorkton Station - September 2018 Summary Report



Parameters	Unit	Color Code for Wind Speed and Pollution Concentration Class						
Wind Speed	m/s	$0.3 \leq WS < 1.4$	$1.4 \leq WS < 3.1$	$3.1 \leq WS < 7.8$	$7.8 \leq WS < 10.8$	$10.8 \leq WS < 13.6$	$WS \geq 13.6$	
SO ₂	ppb	$0 \leq C < 1$	$1 \leq C < 5$	$5 \leq C < 10$	$10 \leq C < 57$	$57 \leq C < 172$	$C \geq 172$	
NO ₂	ppb	$0 \leq C < 5$	$5 \leq C < 15$	$15 \leq C < 30$	$30 \leq C < 100$	$100 \leq C < 212$	$C \geq 212$	
H ₂ S	ppb	$0 \leq C < 1$	$1 \leq C < 3.6$	$3.6 \leq C < 5$	$5 \leq C < 8$	$8 \leq C < 10.8$	$C \geq 10.8$	
O ₃	ppb	$0 \leq C < 10$	$10 \leq C < 20$	$20 \leq C < 40$	$40 \leq C < 60$	$60 \leq C < 82$	$C \geq 82$	
PM _{2.5}	µg/m ³	$0 \leq C < 2$	$2 \leq C < 4$	$4 \leq C < 10$	$10 \leq C < 20$	$20 \leq C < 30$	$C \geq 30$	

Monthly Update

- Achieved > 95% of scheduled uptime for all parameters except PM_{2.5} (82.2%)
- Downtime of 4% due to routine daily internal zeroes and spans
- Foreign material was found in the SHARP during the calibration and data was invalidated
- Calibration performed Sept 5