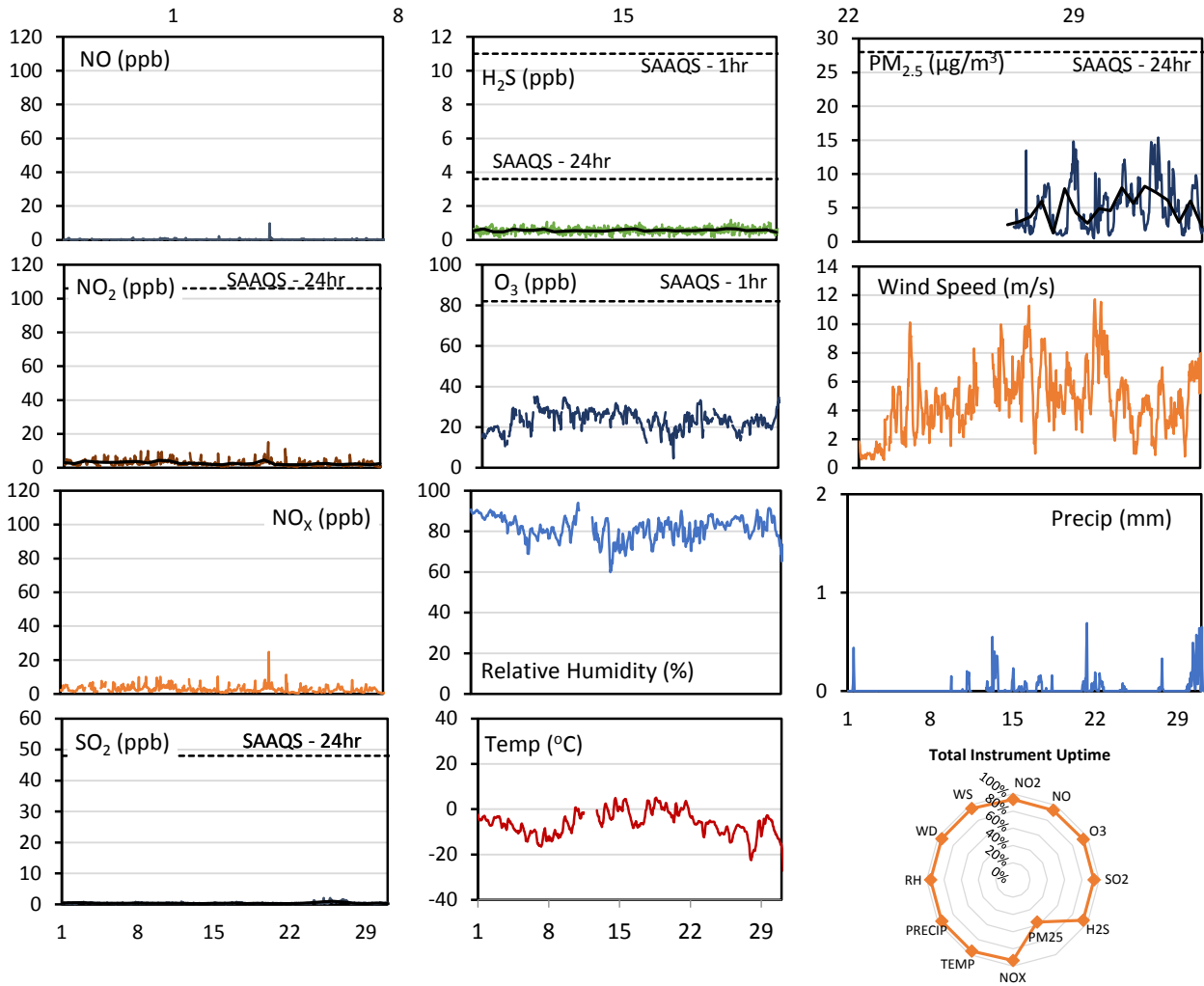
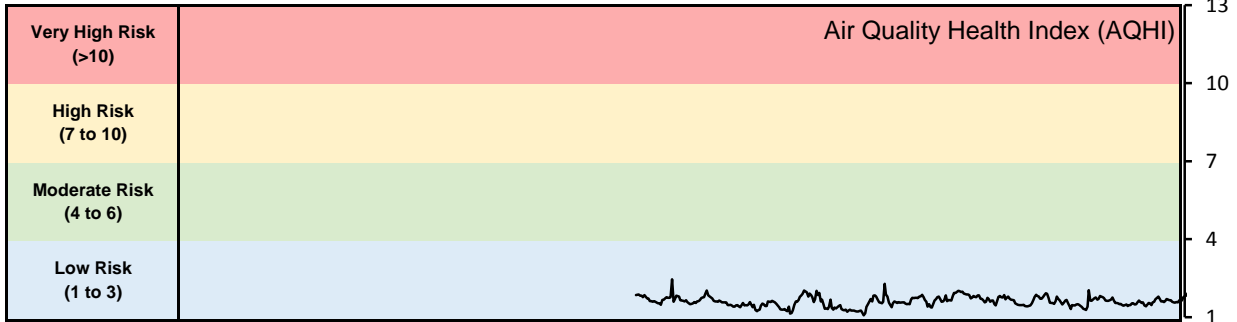


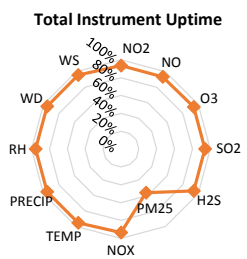
GPAZ Pense Station - December 2018 Summary Report

Pollutants		Month Records		24-Hour Records				1-Hour Records			
Name	Conc. Unit	Avg. Conc.	Total Uptime	Maximum		SAAQS Standard	Exceed Days	Maximum		SAAQS Standard	Exceed Hours
				Conc.	Time			Conc.	Time		
NO	ppb	0.3	94%	0.8	Dec-20	-	-	9.8	Dec-20 09:00	-	-
NO ₂	ppb	2.7	94%	4.7	Dec-20	106	0	15.1	Dec-20 09:00	159	0
NO _x	ppb	2.8	94%	5.3	Dec-20	-	-	24.8	Dec-20 09:00	-	-
SO ₂	ppb	0.4	94%	1.0	Dec-26	48	0	2.1	Dec-25 03:00	172	0
H ₂ S	ppb	0.6	94%	0.7	Dec-26	3.6	0	1.2	Dec-26 12:00	11	0
O ₃	ppb	23.7	94%	30.8	Dec-09	-	-	35.0	Dec-06 13:00	82	0
PM _{2.5}	µg/m ³	4.9	56%	8.2	Dec-26	28	0	15.4	Dec-27 04:00	-	-

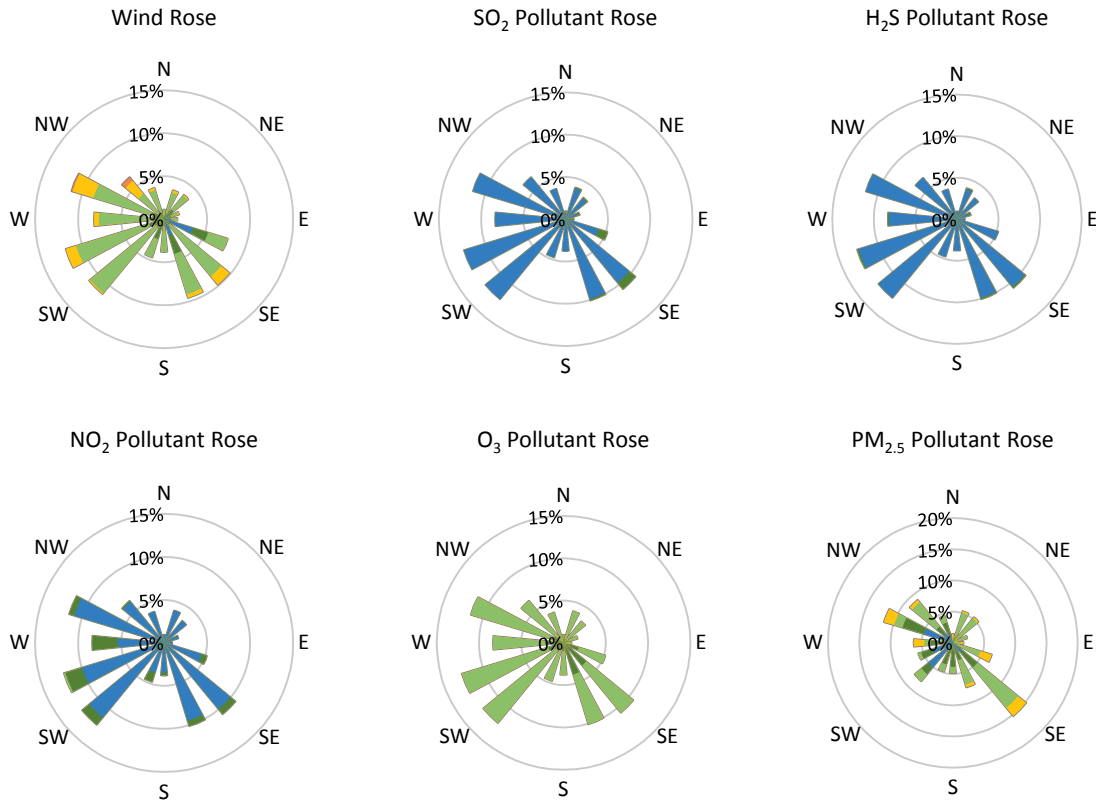
SAAQS: Saskatchewan Ambient Air Quality Standards



* colored lines indicate 1-hr concentration data for all parameters; solid black lines indicate 24-hr concentrations for PM_{2.5}, NO₂, SO₂, and H₂S



GPAZ Pense Station - December 2018 Summary Report



Parameters	Unit	Color Code for Wind Speed and Pollution Concentration Class						
Wind Speed	m/s	$0.3 \leq WS < 1.4$	$1.4 \leq WS < 3.1$	$3.1 \leq WS < 7.8$	$7.8 \leq WS < 10.8$	$10.8 \leq WS < 13.6$	$WS \geq 13.6$	
SO ₂	ppb	$0 \leq C < 1$	$1 \leq C < 5$	$5 \leq C < 10$	$10 \leq C < 57$	$57 \leq C < 172$	$C \geq 172$	
NO ₂	ppb	$0 \leq C < 5$	$5 \leq C < 15$	$15 \leq C < 30$	$30 \leq C < 100$	$100 \leq C < 212$	$C \geq 212$	
H ₂ S	ppb	$0 \leq C < 1$	$1 \leq C < 3.6$	$3.6 \leq C < 5$	$5 \leq C < 8$	$8 \leq C < 10.8$	$C \geq 10.8$	
O ₃	ppb	$0 \leq C < 10$	$10 \leq C < 20$	$20 \leq C < 40$	$40 \leq C < 60$	$60 \leq C < 82$	$C \geq 82$	
PM _{2.5}	µg/m ³	$0 \leq C < 2$	$2 \leq C < 4$	$4 \leq C < 10$	$10 \leq C < 20$	$20 \leq C < 30$	$C \geq 30$	

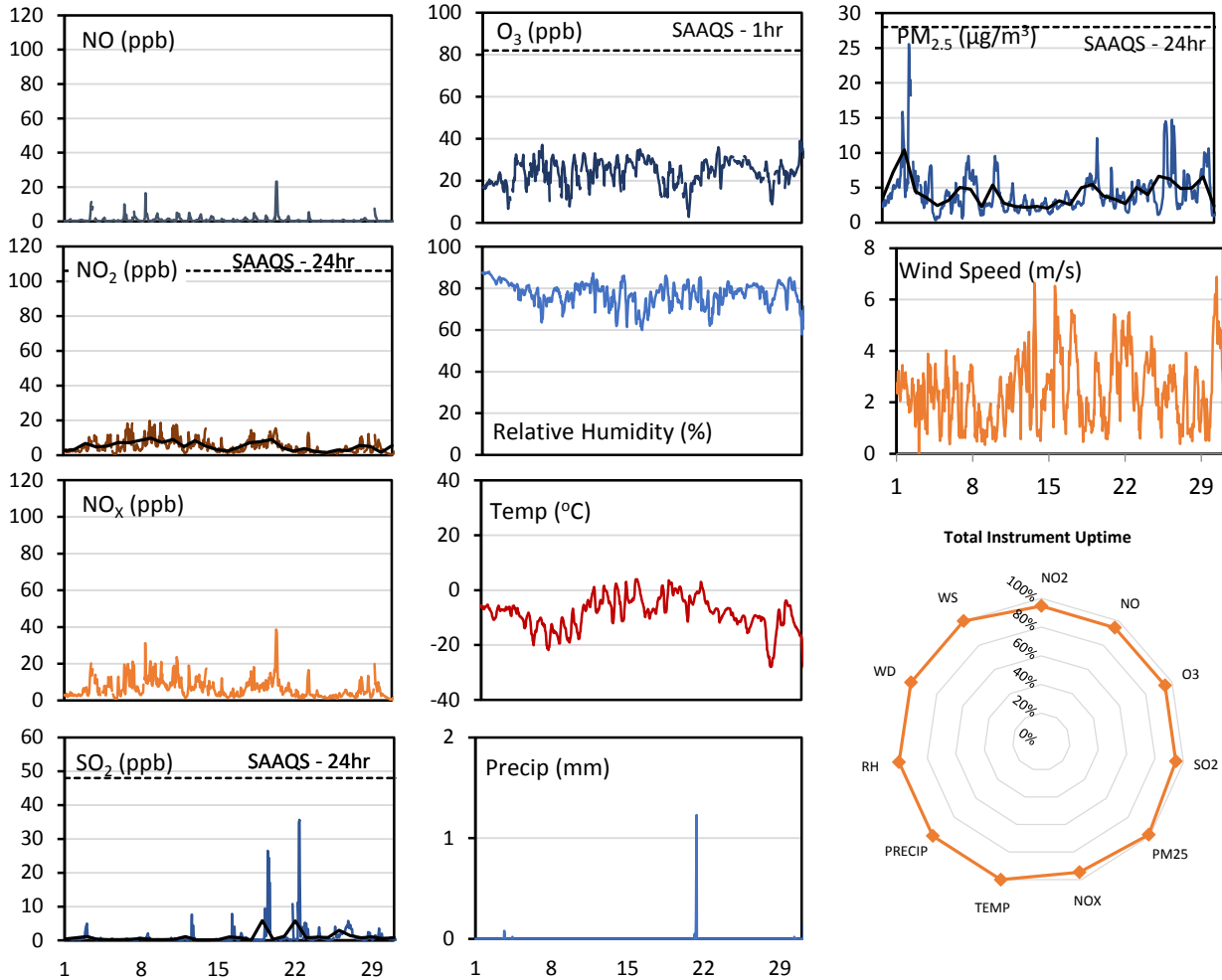
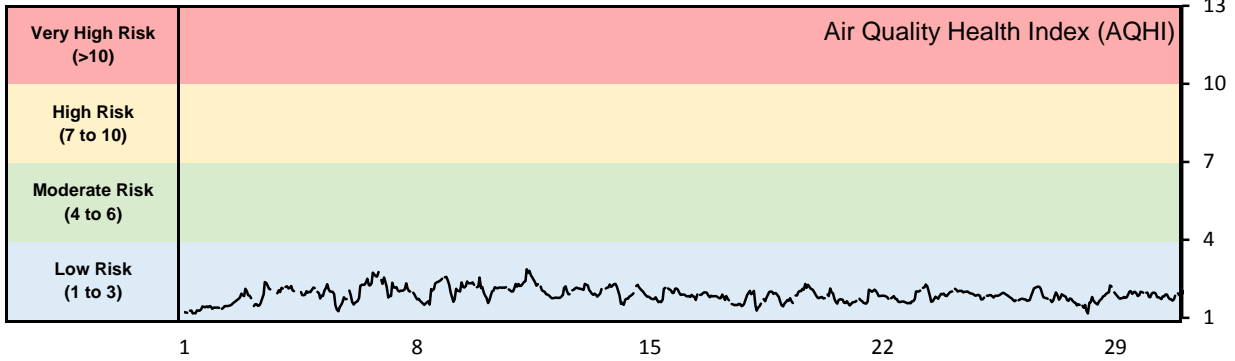
Monthly Update

- Achieved >95.6% of scheduled uptime for all parameters except for PM_{2.5} (56.3%)
- Downtime of 4% due to routine daily internal zeroes and spans
- The particulate analyzer was removed on December 5 due to a leak in the analyzer and a replacement was installed on December 13.
- Station was calibrated on December 5

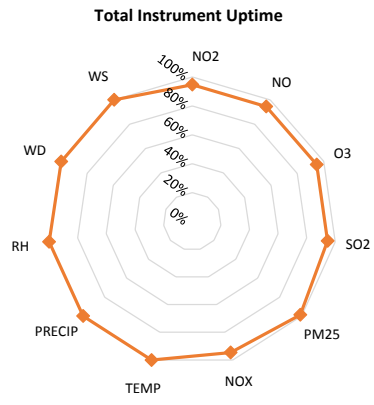
GPAZ East Regina Station - December 2018 Summary Report

Pollutants		Month Records		24-Hour Records				1-Hour Records			
Name	Conc. Unit	Avg. Conc.	Total Uptime	Maximum		SAAQS Standard	Exceed Days	Maximum		SAAQS Standard	Exceed Hours
				Conc.	Time			Conc.	Time		
NO	ppb	1.0	95%	4.9	Dec-20	-	-	23.3	Dec-20 11:00	-	-
NO ₂	ppb	5.2	95%	9.8	Dec-09	106	0	19.8	Dec-08 21:00	159	0
NO _x	ppb	6.5	95%	14.5	Dec-20	-	-	38.7	Dec-20 10:00	-	-
SO ₂	ppb	1.0	95%	5.8	Dec-19	48	0	35.6	Dec-22 09:00	172	0
O ₃	ppb	24.1	95%	30.1	Dec-16	-	-	39.0	Dec-30 20:00	82	0
PM _{2.5}	µg/m ³	4.2	99%	10.4	Dec-03	28	0	25.6	Dec-03 10:00	-	-

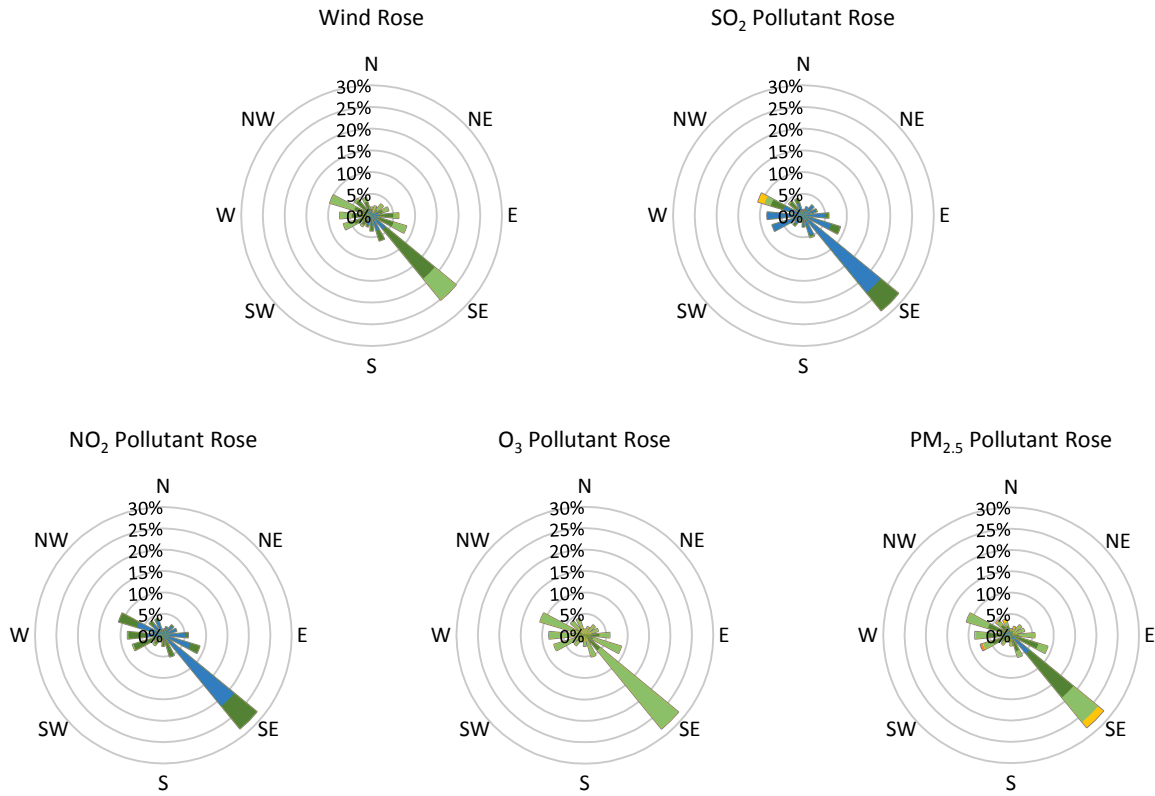
SAAQS: Saskatchewan Ambient Air Quality Standards



* colored lines indicate 1-hr concentration data for all parameters; solid black lines indicate 24-hr concentrations for PM_{2.5}, NO₂, and SO₂



GPAZ East Regina Station - December 2018 Summary Report



Parameters	Unit	Color Code for Wind Speed and Pollution Concentration Class						
		$0.3 \leq WS < 1.4$	$1.4 \leq WS < 3.1$	$3.1 \leq WS < 7.8$	$7.8 \leq WS < 10.8$	$10.8 \leq WS < 13.6$	$WS \geq 13.6$	
Wind Speed	m/s							
SO ₂	ppb	$0 \leq C < 1$	$1 \leq C < 5$	$5 \leq C < 10$	$10 \leq C < 57$	$57 \leq C < 172$	$C \geq 172$	
NO ₂	ppb	$0 \leq C < 5$	$5 \leq C < 15$	$15 \leq C < 30$	$30 \leq C < 100$	$100 \leq C < 212$	$C \geq 212$	
O ₃	ppb	$0 \leq C < 10$	$10 \leq C < 20$	$20 \leq C < 40$	$40 \leq C < 60$	$60 \leq C < 82$	$C \geq 82$	
PM _{2.5}	$\mu\text{g}/\text{m}^3$	$0 \leq C < 2$	$2 \leq C < 4$	$4 \leq C < 10$	$10 \leq C < 20$	$20 \leq C < 30$	$C \geq 30$	

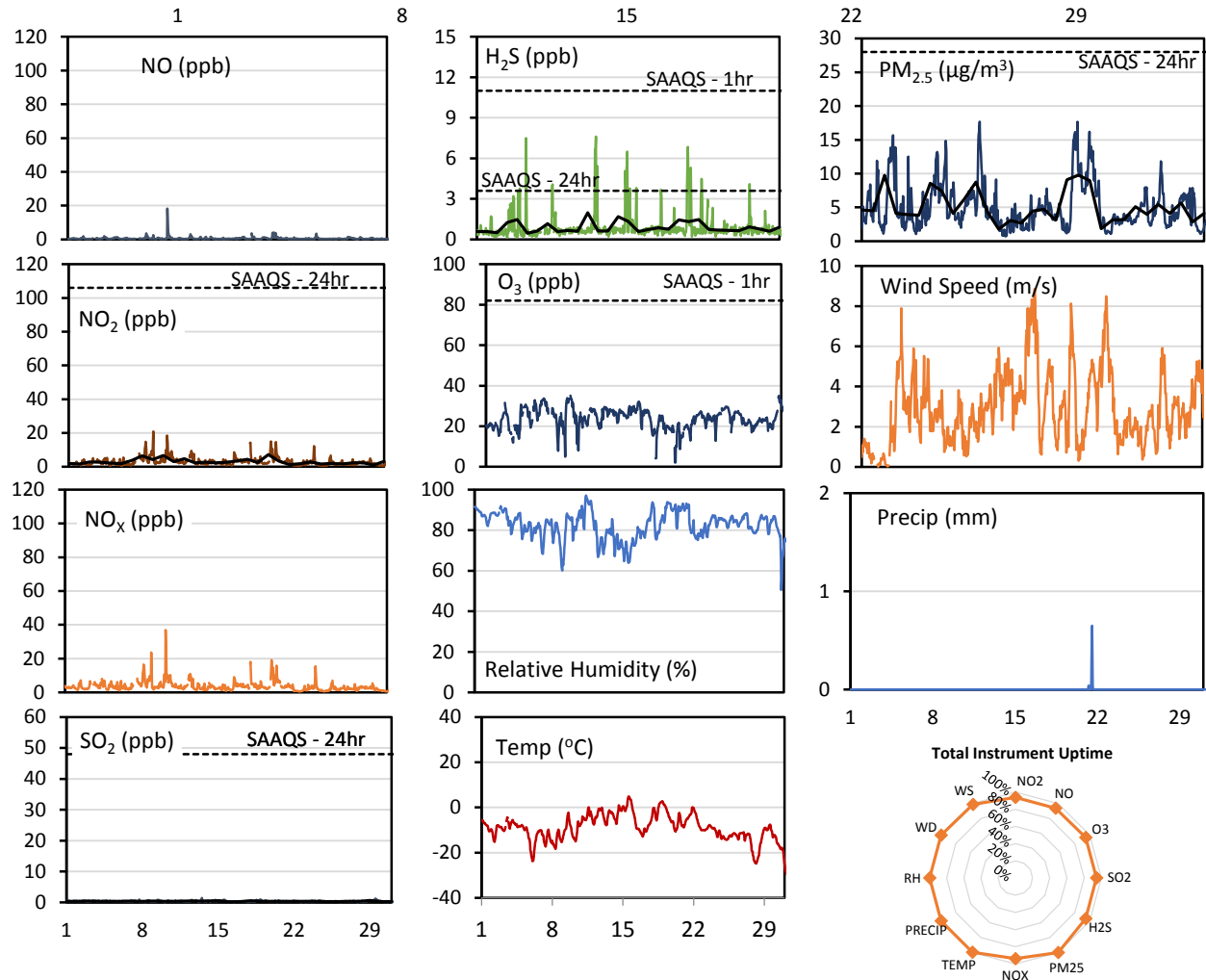
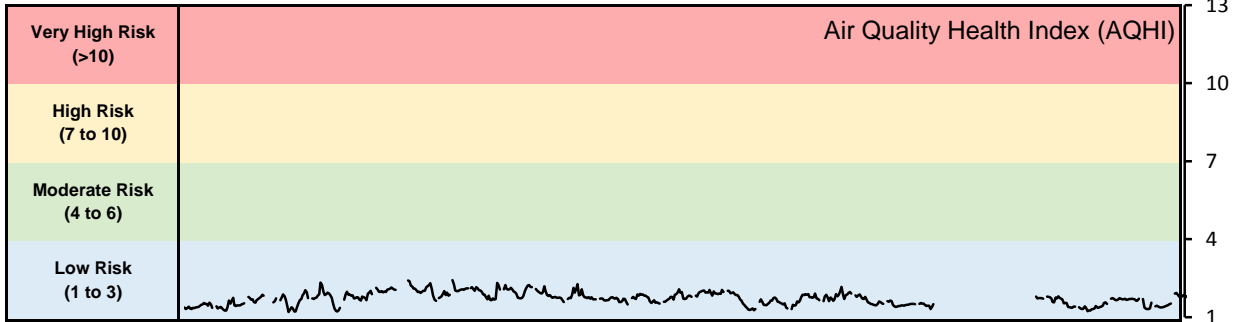
Monthly Update

- Achieved >98.9% of scheduled uptime for all parameters
- Downtime of 4% due to routine daily internal zeroes and spans
- Station was calibrated between December 3 and 4

GPAZ Yorkton Station - December 2018 Summary Report

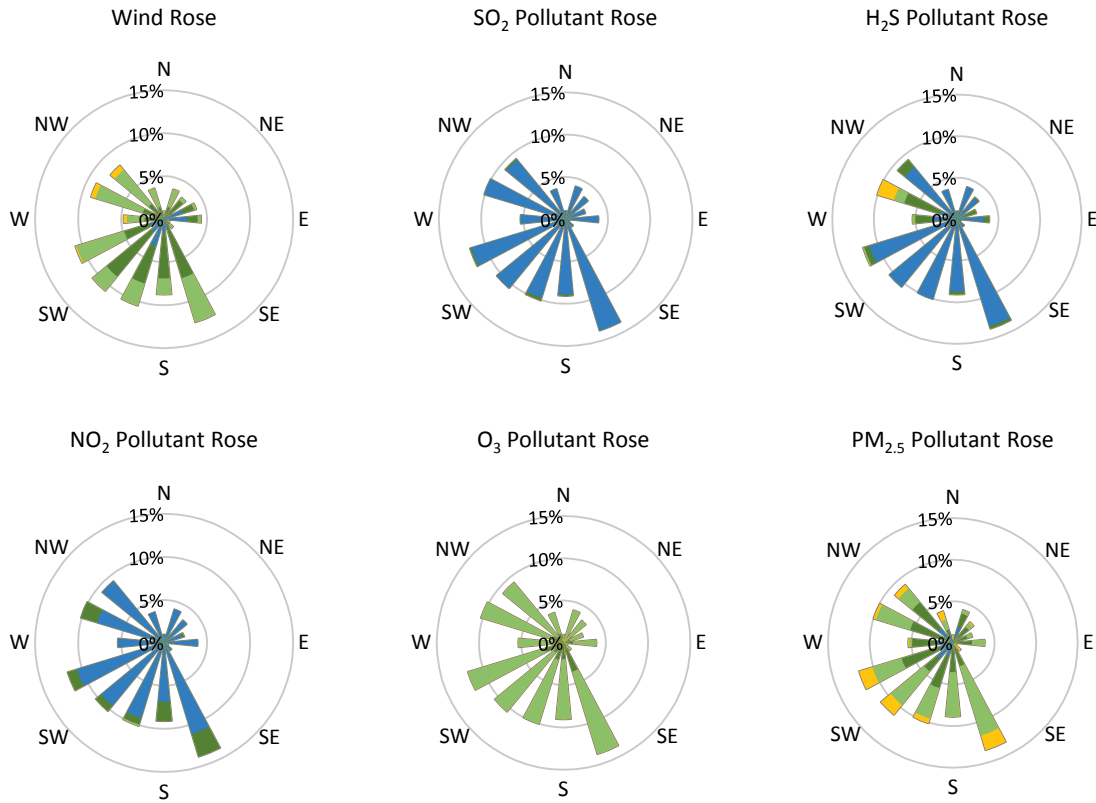
Pollutants		Month Records		24-Hour Records				1-Hour Records			
Name	Conc. Unit	Avg. Conc.	Total Uptime	Maximum		SAAQS Standard	Exceed Days	Maximum		SAAQS Standard	Exceed Hours
				Conc.	Time			Conc.	Time		
NO	ppb	0.6	94%	2.0	Dec-10	-	-	18.3	Dec-10 09:00	-	-
NO ₂	ppb	3.0	94%	7.2	Dec-20	106	0	20.9	Dec-09 01:00	159	0
NO _x	ppb	3.6	94%	8.7	Dec-10	-	-	36.9	Dec-10 09:00	-	-
SO ₂	ppb	0.4	94%	0.6	Dec-29	48	0	1.4	Dec-13 12:00	172	0
H ₂ S	ppb	0.9	94%	2.0	Dec-12	3.6	0	7.6	Dec-12 19:00	11	0
O ₃	ppb	23.7	94%	29.5	Dec-06	-	-	35.1	Dec-09 14:00	82	0
PM _{2.5}	µg/m ³	5.1	100%	9.8	Dec-20	28	0	17.7	Dec-11 08:00	-	-

SAAQS: Saskatchewan Ambient Air Quality Standards



* colored lines indicate 1-hr concentration data for all parameters; solid black lines indicate 24-hr concentrations for PM_{2.5}, NO₂, SO₂, and H₂S

GPAZ Yorkton Station - December 2018 Summary Report



Parameters	Unit	Color Code for Wind Speed and Pollution Concentration Class						
Wind Speed	m/s	0.3 ≤ WS < 1.4	1.4 ≤ WS < 3.1	3.1 ≤ WS < 7.8	7.8 ≤ WS < 10.8	10.8 ≤ WS < 13.6	13.6 ≤ WS < 17.2	WS ≥ 17.2
SO ₂	ppb	0 ≤ C < 1	1 ≤ C < 5	5 ≤ C < 10	10 ≤ C < 57	57 ≤ C < 172	172 ≤ C < 212	C ≥ 212
NO ₂	ppb	0 ≤ C < 5	5 ≤ C < 15	15 ≤ C < 30	30 ≤ C < 100	100 ≤ C < 212	212 ≤ C < 212	C ≥ 212
H ₂ S	ppb	0 ≤ C < 1	1 ≤ C < 3.6	3.6 ≤ C < 5	5 ≤ C < 8	8 ≤ C < 10.8	10.8 ≤ C < 10.8	C ≥ 10.8
O ₃	ppb	0 ≤ C < 10	10 ≤ C < 20	20 ≤ C < 40	40 ≤ C < 60	60 ≤ C < 82	82 ≤ C < 82	C ≥ 82
PM _{2.5}	µg/m ³	0 ≤ C < 2	2 ≤ C < 4	4 ≤ C < 10	10 ≤ C < 20	20 ≤ C < 30	30 ≤ C < 30	C ≥ 30

Monthly Update

- Achieved >98.1% of scheduled uptime for all parameters
- Downtime of 4% due to routine daily internal zeroes and spans
- Station was calibrated on December 7