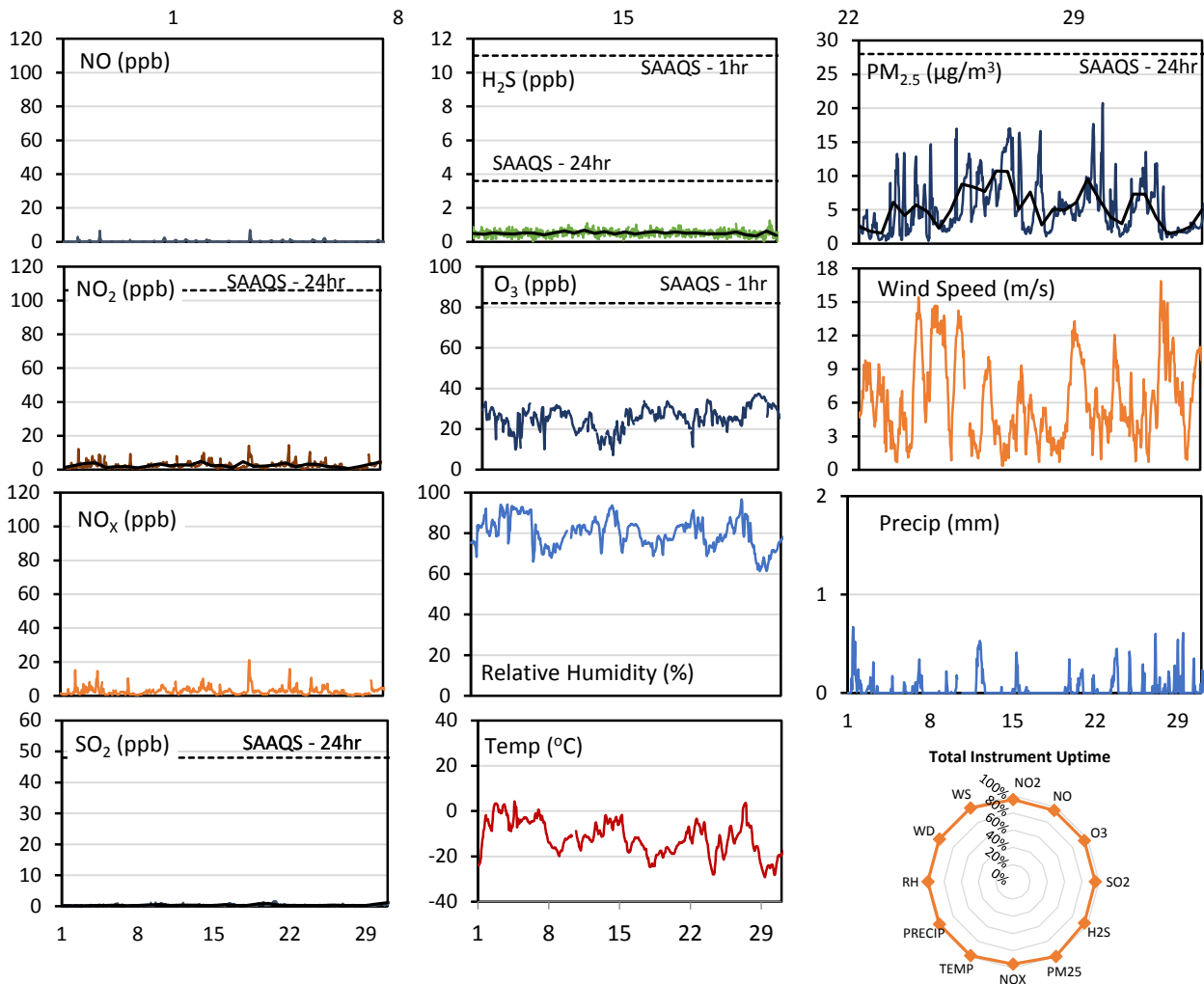
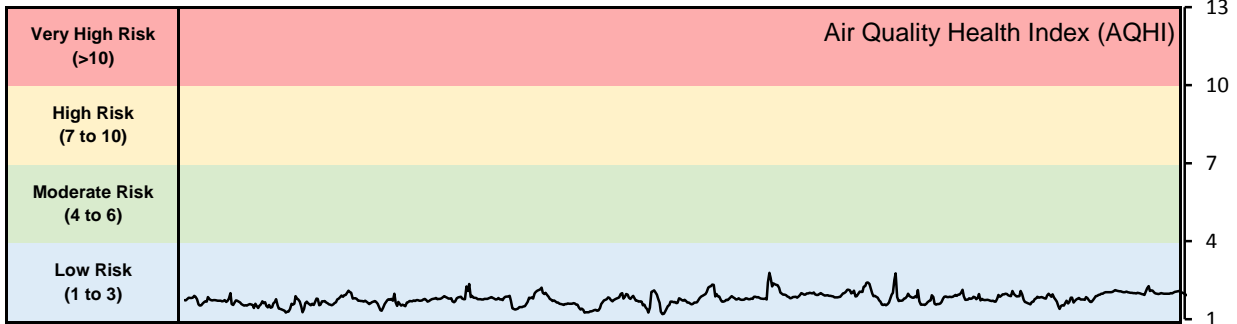


GPAZ Pense Station - January 2019 Summary Report

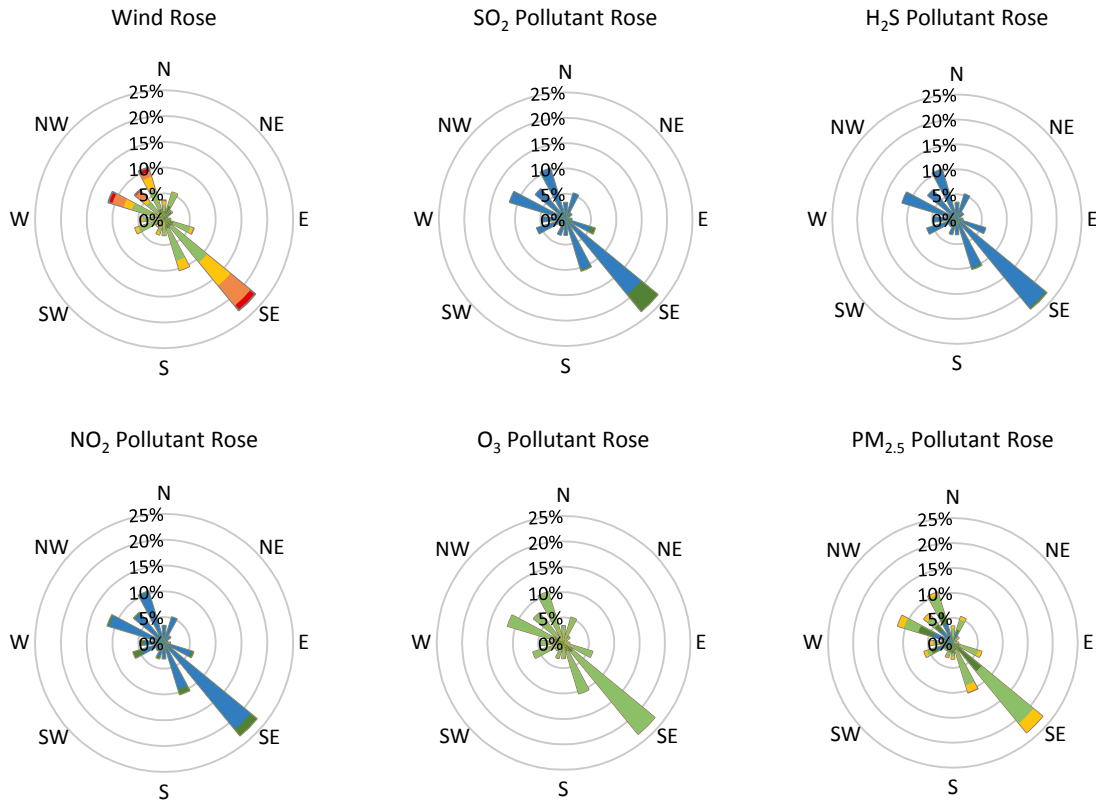
Pollutants		Month Records		24-Hour Records				1-Hour Records			
Name	Conc. Unit	Avg. Conc.	Total Uptime	Maximum		SAAQS Standard	Exceed Days	Maximum		SAAQS Standard	Exceed Hours
				Conc.	Time			Conc.	Time		
NO	ppb	0.3	96%	1.0	Jan-18	-	-	7.0	Jan-18 13:00	-	-
NO ₂	ppb	2.5	96%	4.9	Jan-14	106	0	14.4	Jan-22 08:00	159	0
NO _x	ppb	2.8	96%	5.8	Jan-18	-	-	21.1	Jan-18 13:00	-	-
SO ₂	ppb	0.4	96%	1.1	Jan-31	48	0	1.6	Jan-20 15:00	172	0
H ₂ S	ppb	0.5	96%	0.7	Jan-12	3.6	0	1.3	Jan-30 08:00	11	0
O ₃	ppb	25.5	96%	34.8	Jan-29	-	-	37.4	Jan-28 23:00	82	0
PM _{2.5}	µg/m ³	5.3	100%	10.7	Jan-13	28	0	20.8	Jan-22 08:00	-	-

SAAQS: Saskatchewan Ambient Air Quality Standards



* colored lines indicate 1-hr concentration data for all parameters; solid black lines indicate 24-hr concentrations for PM_{2.5}, NO₂, SO₂, and H₂S

GPAZ Pense Station - January 2019 Summary Report



Parameters	Unit	Color Code for Wind Speed and Pollution Concentration Class						
Wind Speed	m/s	$0.3 \leq WS < 1.4$	$1.4 \leq WS < 3.1$	$3.1 \leq WS < 7.8$	$7.8 \leq WS < 10.8$	$10.8 \leq WS < 13.6$	$WS \geq 13.6$	
SO ₂	ppb	$0 \leq C < 1$	$1 \leq C < 5$	$5 \leq C < 10$	$10 \leq C < 57$	$57 \leq C < 172$	$C \geq 172$	
NO ₂	ppb	$0 \leq C < 5$	$5 \leq C < 15$	$15 \leq C < 30$	$30 \leq C < 100$	$100 \leq C < 212$	$C \geq 212$	
H ₂ S	ppb	$0 \leq C < 1$	$1 \leq C < 3.6$	$3.6 \leq C < 5$	$5 \leq C < 8$	$8 \leq C < 10.8$	$C \geq 10.8$	
O ₃	ppb	$0 \leq C < 10$	$10 \leq C < 20$	$20 \leq C < 40$	$40 \leq C < 60$	$60 \leq C < 82$	$C \geq 82$	
PM _{2.5}	µg/m ³	$0 \leq C < 2$	$2 \leq C < 4$	$4 \leq C < 10$	$10 \leq C < 20$	$20 \leq C < 30$	$C \geq 30$	

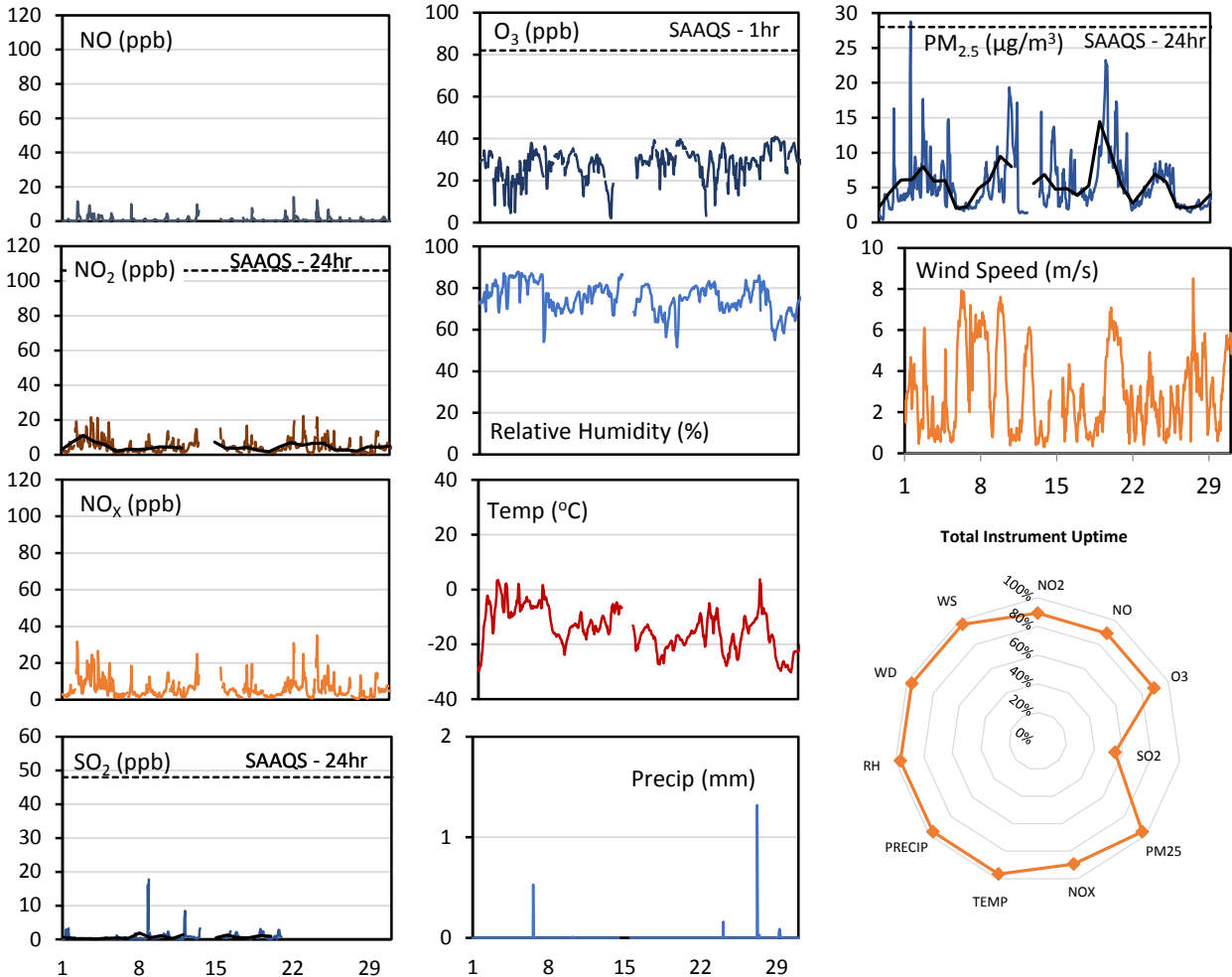
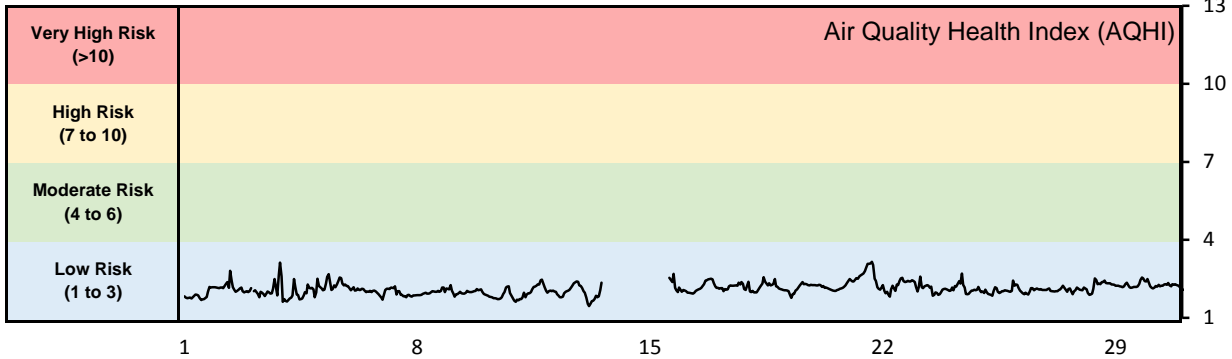
Monthly Update

- Achieved >98.8% of scheduled uptime for all parameters
- Downtime of 4% due to routine daily internal zeroes and spans

GPAZ East Regina Station - January 2019 Summary Report

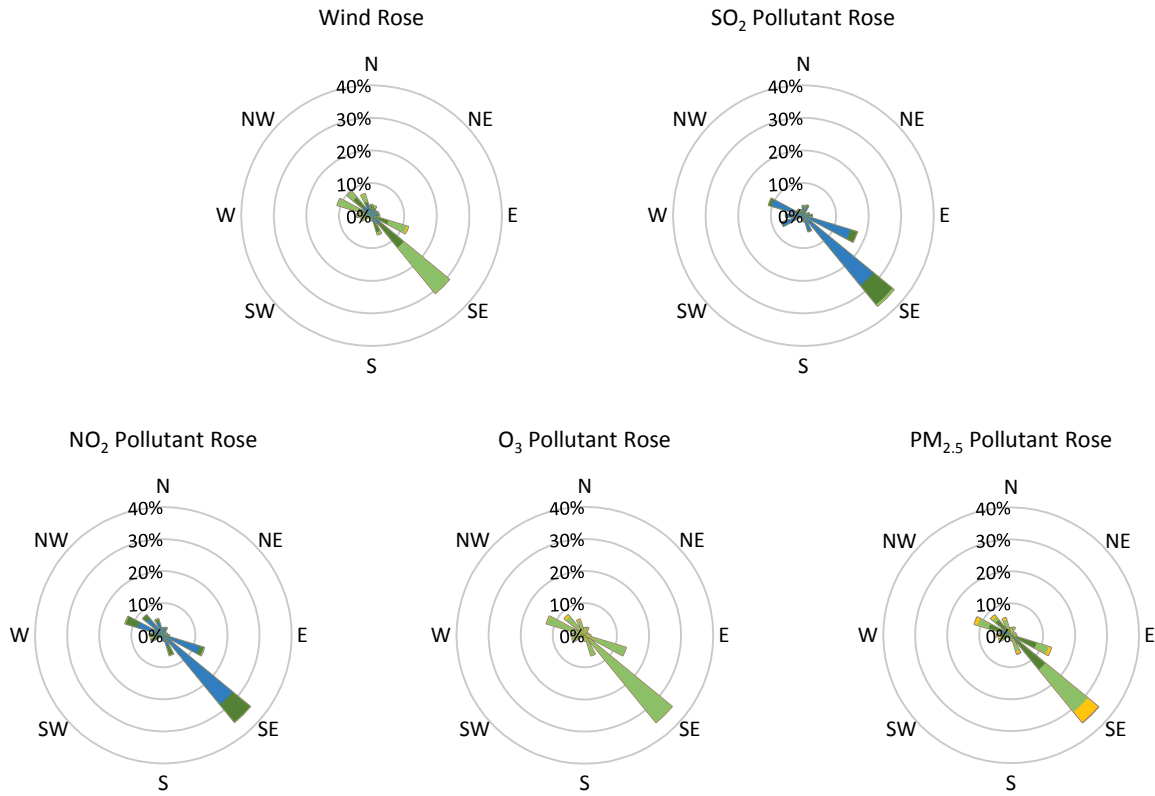
Pollutants		Month Records		24-Hour Records				1-Hour Records			
Name	Conc. Unit	Avg. Conc.	Total Uptime	Maximum		SAAQS Standard	Exceed Days	Maximum		SAAQS Standard	Exceed Hours
				Conc.	Time			Conc.	Time		
NO	ppb	0.8	89%	2.3	Jan-03	-	-	14.1	Jan-22 06:00	-	-
NO ₂	ppb	4.7	89%	11.2	Jan-03	106	0	22.3	Jan-23 03:00	159	0
NO _x	ppb	5.8	89%	14.3	Jan-03	-	-	35.1	Jan-24 09:00	-	-
SO ₂	ppb	0.7	55%	1.9	Jan-08	48	0	17.8	Jan-08 21:00	172	0
O ₃	ppb	28.1	89%	37.4	Jan-28	-	-	41.0	Jan-28 19:00	82	0
PM _{2.5}	µg/m ³	5.4	96%	14.4	Jan-21	28	0	28.8	Jan-03 21:00	-	-

SAAQS: Saskatchewan Ambient Air Quality Standards



* colored lines indicate 1-hr concentration data for all parameters; solid black lines indicate 24-hr concentrations for PM_{2.5}, NO₂, and SO₂

GPAZ East Regina Station - January 2019 Summary Report



Parameters	Unit	Color Code for Wind Speed and Pollution Concentration Class						
Wind Speed	m/s	$0.3 \leq WS < 1.4$	$1.4 \leq WS < 3.1$	$3.1 \leq WS < 7.8$	$7.8 \leq WS < 10.8$	$10.8 \leq WS < 13.6$	$WS \geq 13.6$	
SO ₂	ppb	$0 \leq C < 1$	$1 \leq C < 5$	$5 \leq C < 10$	$10 \leq C < 57$	$57 \leq C < 172$	$C \geq 172$	
NO ₂	ppb	$0 \leq C < 5$	$5 \leq C < 15$	$15 \leq C < 30$	$30 \leq C < 100$	$100 \leq C < 212$	$C \geq 212$	
O ₃	ppb	$0 \leq C < 10$	$10 \leq C < 20$	$20 \leq C < 40$	$40 \leq C < 60$	$60 \leq C < 82$	$C \geq 82$	
PM _{2.5}	$\mu\text{g}/\text{m}^3$	$0 \leq C < 2$	$2 \leq C < 4$	$4 \leq C < 10$	$10 \leq C < 20$	$20 \leq C < 30$	$C \geq 30$	

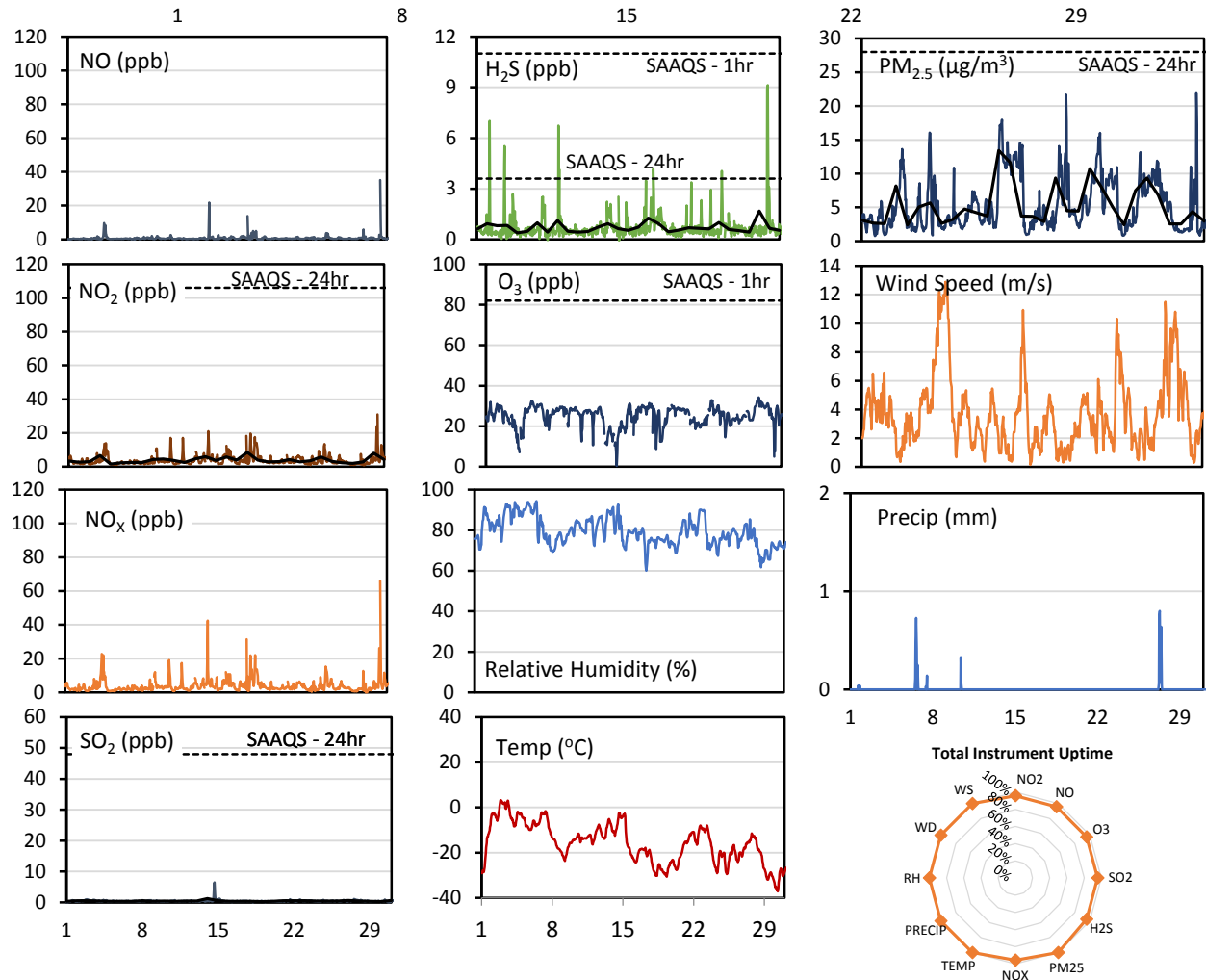
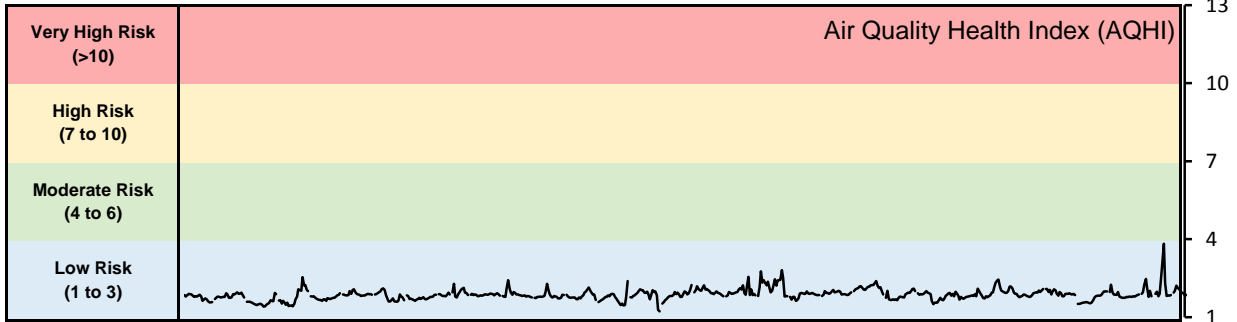
Monthly Update

- Achieved >93.2% of scheduled uptime for all parameters except PM_{2.5} (57.1%)
- Downtime of 4% due to routine daily internal zeroes and spans
- The sample pump failed on January 14 and was replaced on January 15
- The SO₂ analyzer failed on January 27 and was removed and sent for servicing

GPAZ Yorkton Station - January 2019 Summary Report

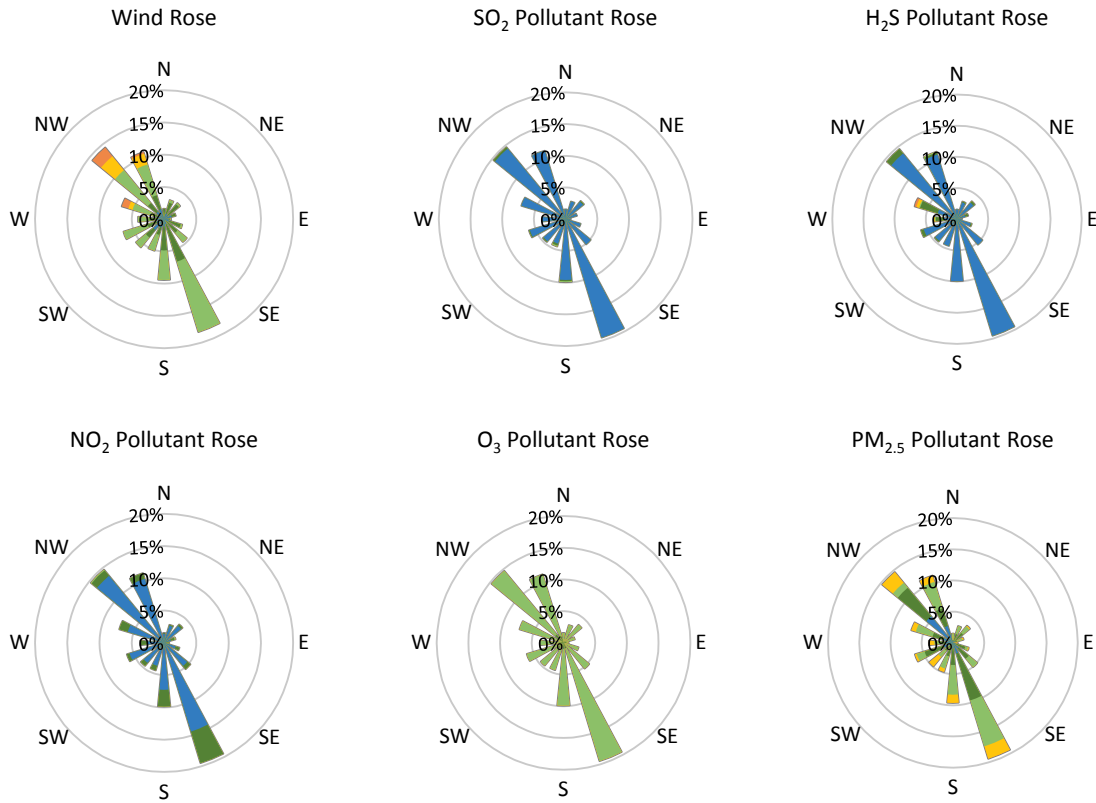
Pollutants		Month Records		24-Hour Records				1-Hour Records			
Name	Conc. Unit	Avg. Conc.	Total Uptime	Maximum		SAAQS Standard	Exceed Days	Maximum		SAAQS Standard	Exceed Hours
				Conc.	Time			Conc.	Time		
NO	ppb	0.8	96%	2.5	Jan-30	-	-	35.1	Jan-30 09:00	-	-
NO ₂	ppb	3.9	96%	8.6	Jan-18	106	0	31.0	Jan-30 09:00	159	0
NO _x	ppb	3.9	96%	9.5	Jan-18	-	-	65.9	Jan-30 09:00	-	-
SO ₂	ppb	0.5	96%	1.2	Jan-14	48	0	6.5	Jan-14 16:00	172	0
H ₂ S	ppb	0.7	96%	1.7	Jan-29	3.6	0	9.1	Jan-29 20:00	11	0
O ₃	ppb	24.9	96%	29.6	Jan-28	-	-	34.3	Jan-28 17:00	82	0
PM _{2.5}	µg/m ³	5.3	100%	13.4	Jan-13	28	0	21.9	Jan-30 08:00	-	-

SAAQS: Saskatchewan Ambient Air Quality Standards



* colored lines indicate 1-hr concentration data for all parameters; solid black lines indicate 24-hr concentrations for PM_{2.5}, NO₂, SO₂, and H₂S

GPAZ Yorkton Station - January 2019 Summary Report



Parameters	Unit	Color Code for Wind Speed and Pollution Concentration Class						
		$0.3 \leq WS < 1.4$	$1.4 \leq WS < 3.1$	$3.1 \leq WS < 7.8$	$7.8 \leq WS < 10.8$	$10.8 \leq WS < 13.6$	$WS \geq 13.6$	
SO ₂	ppb	$0 \leq C < 1$	$1 \leq C < 5$	$5 \leq C < 10$	$10 \leq C < 57$	$57 \leq C < 172$	$C \geq 172$	
NO ₂	ppb	$0 \leq C < 5$	$5 \leq C < 15$	$15 \leq C < 30$	$30 \leq C < 100$	$100 \leq C < 212$	$C \geq 212$	
H ₂ S	ppb	$0 \leq C < 1$	$1 \leq C < 3.6$	$3.6 \leq C < 5$	$5 \leq C < 8$	$8 \leq C < 10.8$	$C \geq 10.8$	
O ₃	ppb	$0 \leq C < 10$	$10 \leq C < 20$	$20 \leq C < 40$	$40 \leq C < 60$	$60 \leq C < 82$	$C \geq 82$	
PM _{2.5}	$\mu\text{g}/\text{m}^3$	$0 \leq C < 2$	$2 \leq C < 4$	$4 \leq C < 10$	$10 \leq C < 20$	$20 \leq C < 30$	$C \geq 30$	

Monthly Update

- Achieved 100% of scheduled uptime for all parameters
- Downtime of 4% due to routine daily internal zeroes and spans