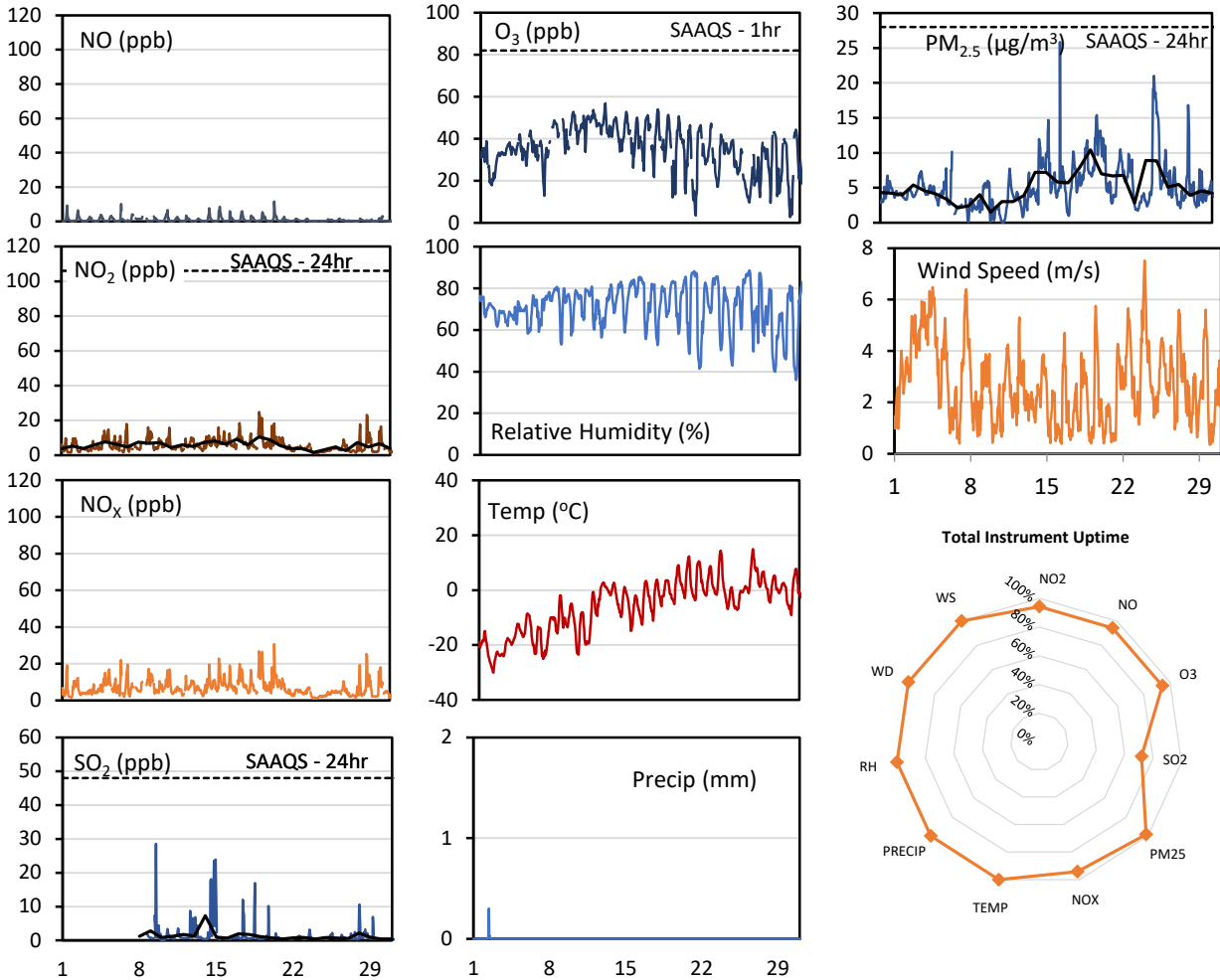
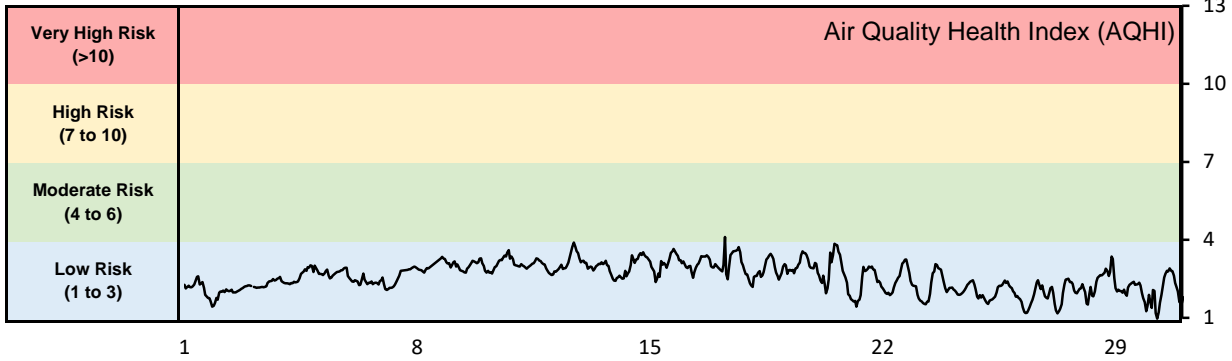


GPAZ East Regina Station - March 2019 Summary Report

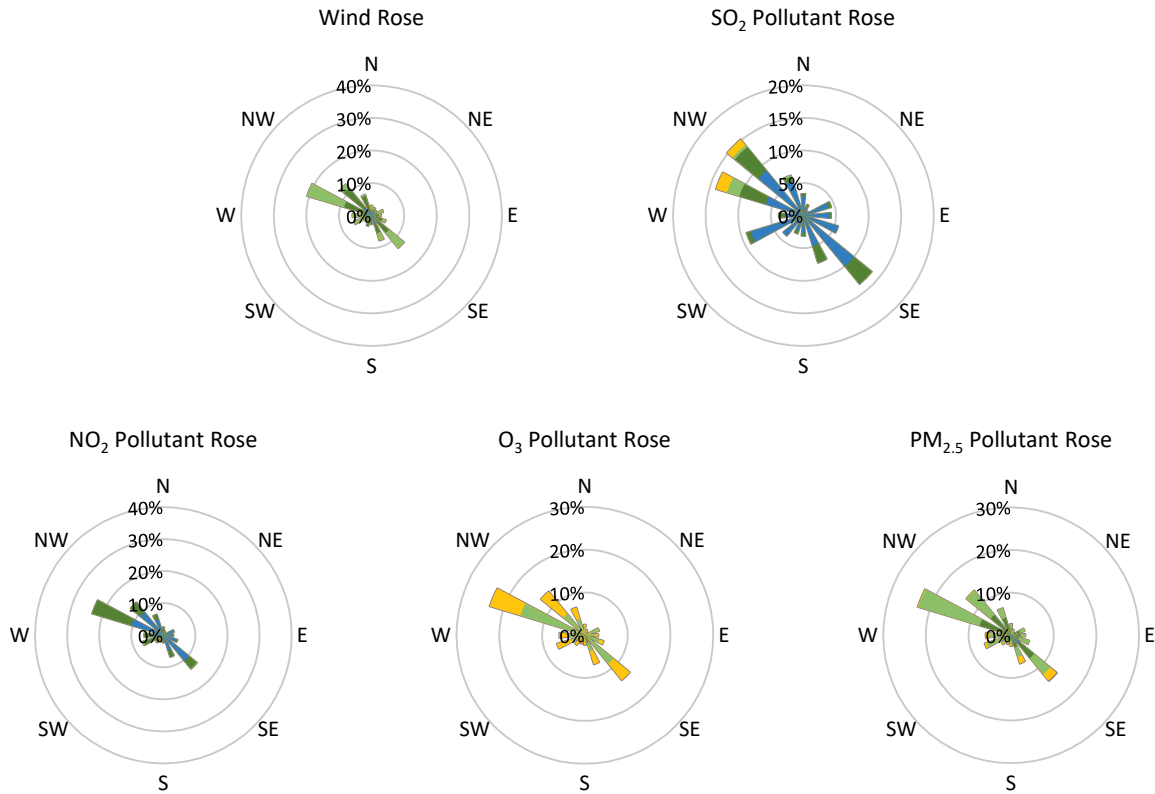
Pollutants		Month Records		24-Hour Records				1-Hour Records			
Name	Conc. Unit	Avg. Conc.	Total Uptime	Maximum		SAAQS Standard	Exceed Days	Maximum		SAAQS Standard	Exceed Hours
				Conc.	Time			Conc.	Time		
NO	ppb	0.9	94%	1.8	Mar-15	-	-	11.6	Mar-20 10:00	-	-
NO ₂	ppb	5.8	94%	10.6	Mar-19	106	0	24.8	Mar-19 01:00	159	0
NO _x	ppb	6.9	94%	12.3	Mar-19	-	-	30.7	Mar-20 10:00	-	-
SO ₂	ppb	1.3	72%	7.3	Mar-14	48	0	28.6	Mar-09 12:00	172	0
O ₃	ppb	35.0	94%	49.7	Mar-11	-	-	56.9	Mar-12 17:00	82	0
PM _{2.5}	µg/m ³	5.2	99%	10.4	Mar-20	28	0	25.8	Mar-17 06:00	-	-

SAAQS: Saskatchewan Ambient Air Quality Standards



* colored lines indicate 1-hr concentration data for all parameters; solid black lines indicate 24-hr concentrations for PM_{2.5}, NO₂, and SO₂

GPAZ East Regina Station - March 2019 Summary Report



Parameters	Unit	Color Code for Wind Speed and Pollution Concentration Class						
		0.3 ≤ WS < 1.4	1.4 ≤ WS < 3.1	3.1 ≤ WS < 7.8	7.8 ≤ WS < 10.8	10.8 ≤ WS < 13.6	WS ≥ 13.6	
Wind Speed	m/s	0.3 ≤ WS < 1.4	1.4 ≤ WS < 3.1	3.1 ≤ WS < 7.8	7.8 ≤ WS < 10.8	10.8 ≤ WS < 13.6	WS ≥ 13.6	
SO ₂	ppb	0 ≤ C < 1	1 ≤ C < 5	5 ≤ C < 10	10 ≤ C < 57	57 ≤ C < 172	C ≥ 172	
NO ₂	ppb	0 ≤ C < 5	5 ≤ C < 15	15 ≤ C < 30	30 ≤ C < 100	100 ≤ C < 212	C ≥ 212	
O ₃	ppb	0 ≤ C < 10	10 ≤ C < 20	20 ≤ C < 40	40 ≤ C < 60	60 ≤ C < 82	C ≥ 82	
PM _{2.5}	µg/m ³	0 ≤ C < 2	2 ≤ C < 4	4 ≤ C < 10	10 ≤ C < 20	20 ≤ C < 30	C ≥ 30	

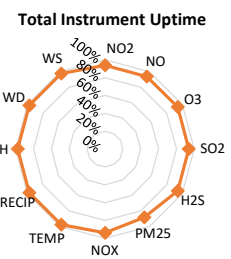
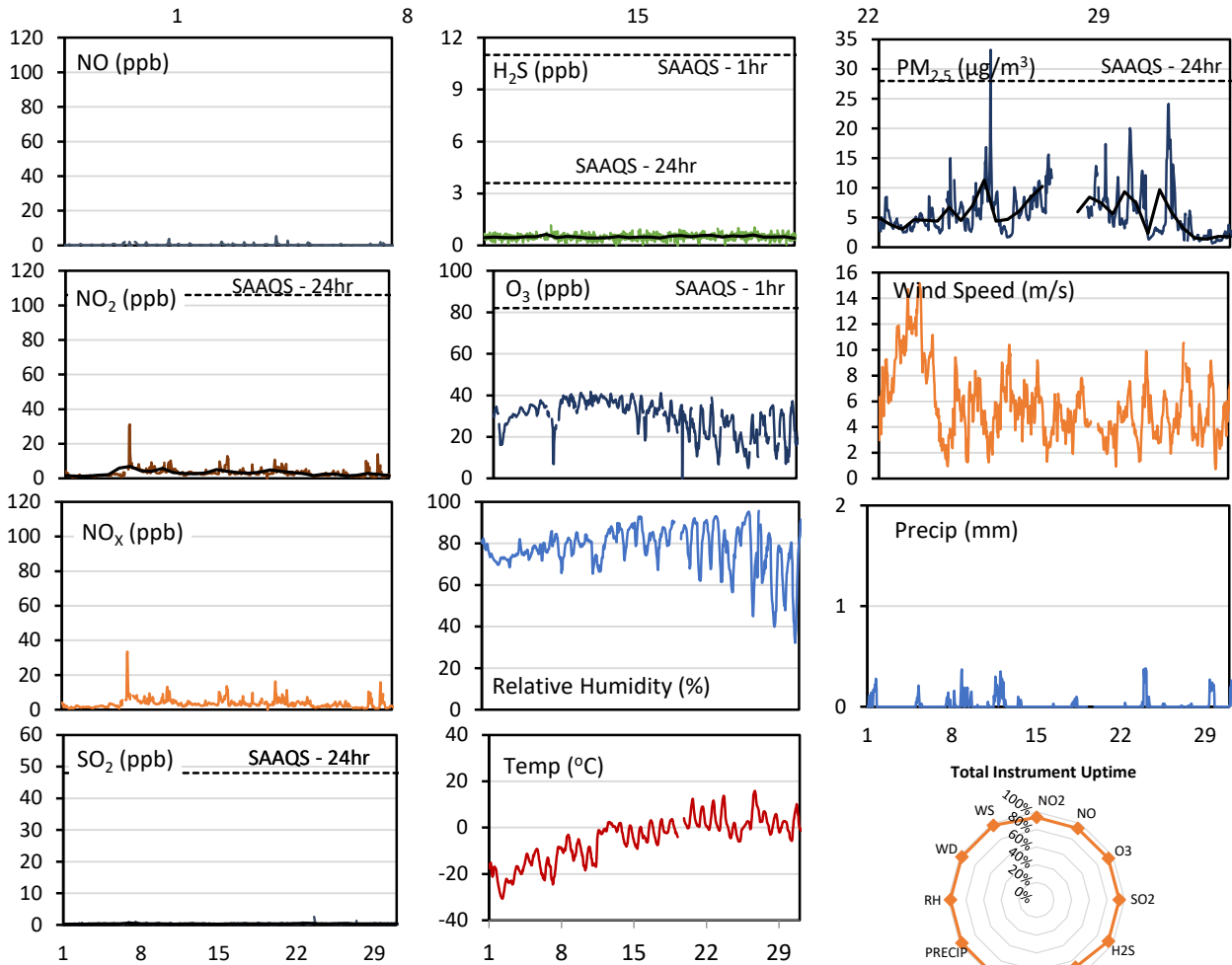
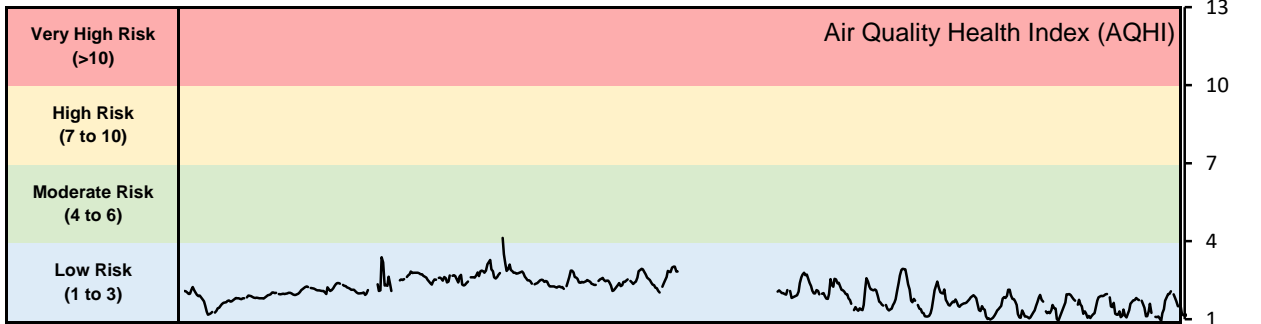
Monthly Update

- Achieved >98.5% of scheduled uptime for all parameters except SO₂ (75.2%)
- Downtime of 4% due to routine daily internal zeroes and spans
- The SO₂ analyzer failed on January 27 and was removed and sent for servicing; the analyzer was repaired and replaced on March 8
- Station was calibrated on March 7

GPAZ Pense Station - March 2019 Summary Report

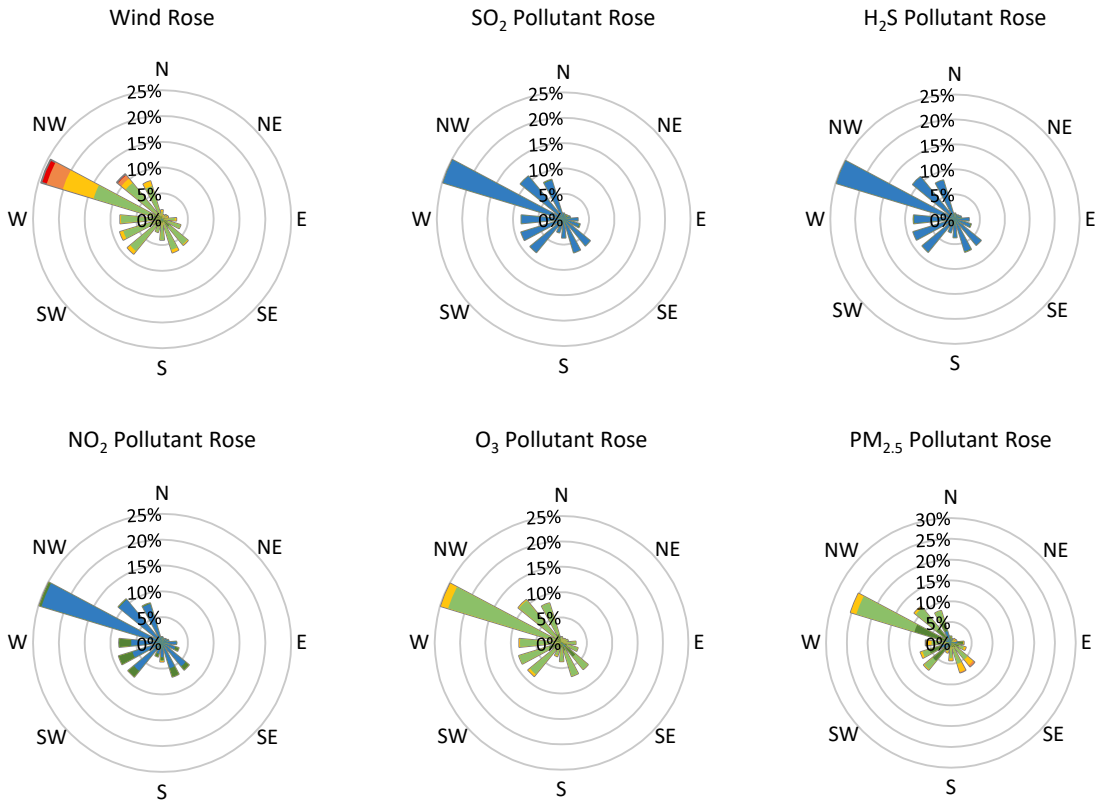
Pollutants		Month Records		24-Hour Records				1-Hour Records			
Name	Conc. Unit	Avg. Conc.	Total Uptime	Maximum		SAAQS Standard	Exceed Days	Maximum		SAAQS Standard	Exceed Hours
				Conc.	Time			Conc.	Time		
NO	ppb	0.3	94%	0.8	Mar-20	-	-	5.4	Mar-20 10:00	-	-
NO ₂	ppb	3.1	94%	6.9	Mar-07	106	0	31.2	Mar-06 23:00	159	0
NO _x	ppb	3.4	94%	7.6	Mar-07	-	-	33.5	Mar-06 23:00	-	-
SO ₂	ppb	0.3	94%	0.6	Mar-07	48	0	2.6	Mar-23 14:00	172	0
H ₂ S	ppb	0.5	94%	0.6	Mar-07	3.6	0	1.2	Mar-07 11:00	11	0
O ₃	ppb	29.1	94%	38.8	Mar-11	-	-	41.7	Mar-10 15:00	82	0
PM _{2.5}	µg/m ³	5.5	88%	11.3	Mar-10	28	0	33.2	Mar-10 13:00	-	-

SAAQS: Saskatchewan Ambient Air Quality Standards



* colored lines indicate 1-hr concentration data for all parameters; solid black lines indicate 24-hr concentrations for PM_{2.5}, NO₂, SO₂, and H₂S

GPAZ Pense Station - March 2019 Summary Report



Parameters	Unit	Color Code for Wind Speed and Pollution Concentration Class						
Wind Speed	m/s	$0.3 \leq WS < 1.4$	$1.4 \leq WS < 3.1$	$3.1 \leq WS < 7.8$	$7.8 \leq WS < 10.8$	$10.8 \leq WS < 13.6$	$WS \geq 13.6$	
SO ₂	ppb	$0 \leq C < 1$	$1 \leq C < 5$	$5 \leq C < 10$	$10 \leq C < 57$	$57 \leq C < 172$	$C \geq 172$	
NO ₂	ppb	$0 \leq C < 5$	$5 \leq C < 15$	$15 \leq C < 30$	$30 \leq C < 100$	$100 \leq C < 212$	$C \geq 212$	
H ₂ S	ppb	$0 \leq C < 1$	$1 \leq C < 3.6$	$3.6 \leq C < 5$	$5 \leq C < 8$	$8 \leq C < 10.8$	$C \geq 10.8$	
O ₃	ppb	$0 \leq C < 10$	$10 \leq C < 20$	$20 \leq C < 40$	$40 \leq C < 60$	$60 \leq C < 82$	$C \geq 82$	
PM _{2.5}	µg/m ³	$0 \leq C < 2$	$2 \leq C < 4$	$4 \leq C < 10$	$10 \leq C < 20$	$20 \leq C < 30$	$C \geq 30$	

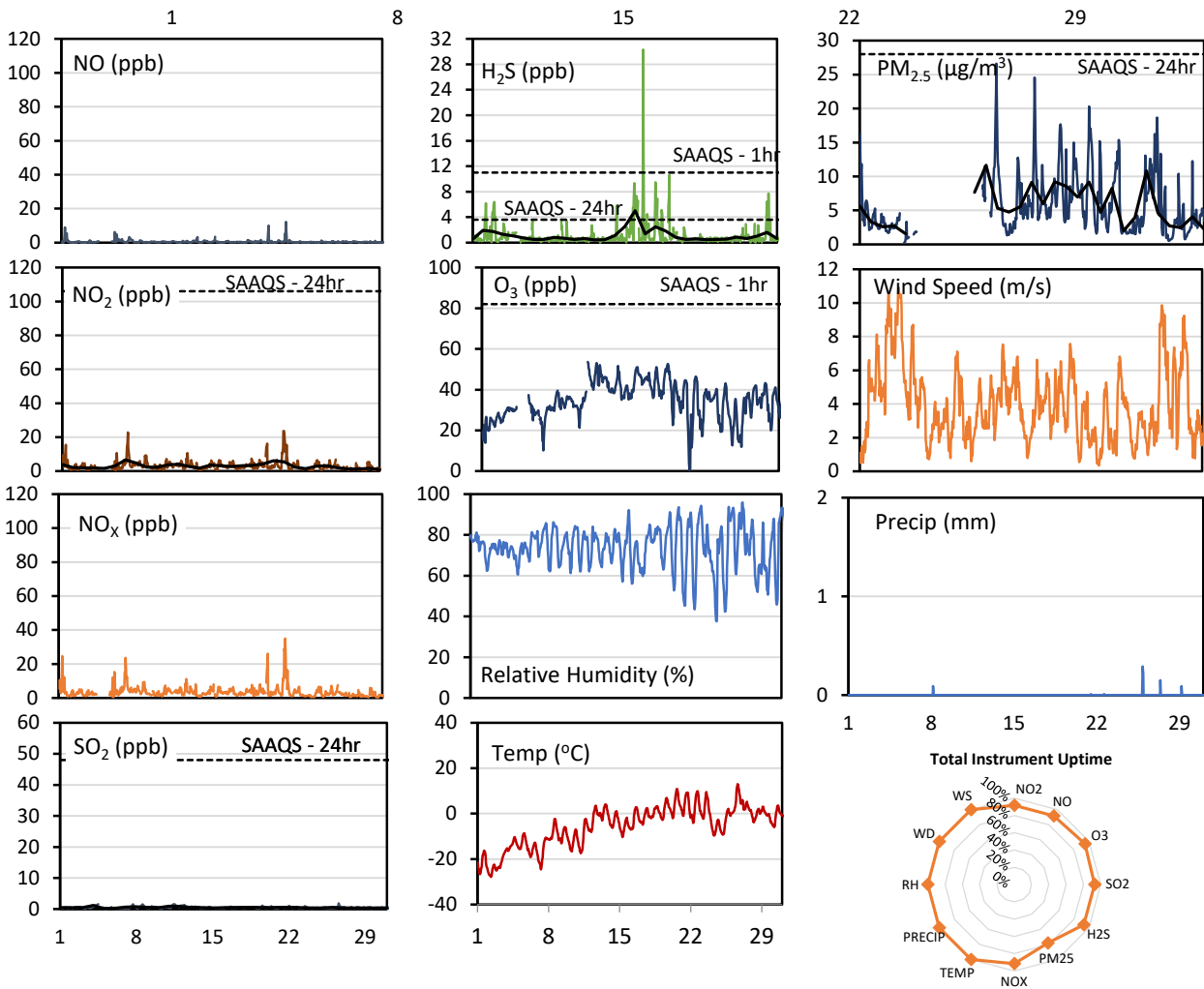
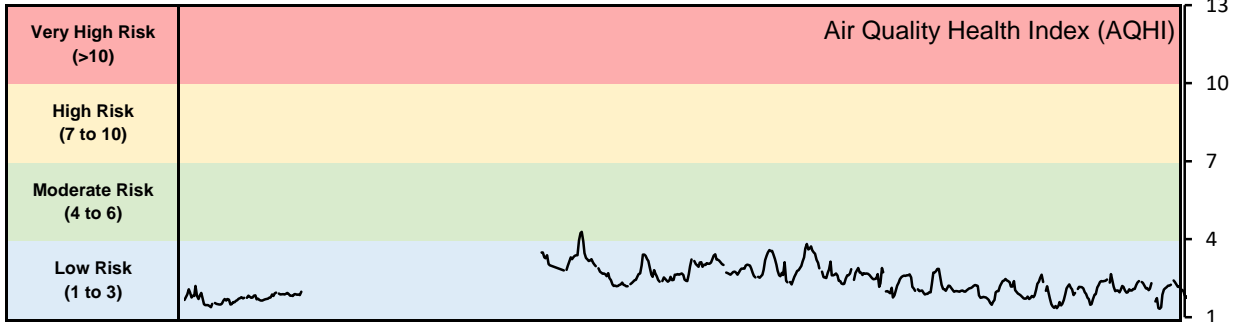
Monthly Update

- Achieved >97.7% of scheduled uptime for all parameters except for PM_{2.5} (88.3%)
- Downtime of 4% due to routine daily internal zeroes and spans
- Operational issue caused two days of downtime for the particulate analyzer
- Station was calibrated on March 6

GPAZ Yorkton Station - March 2019 Summary Report

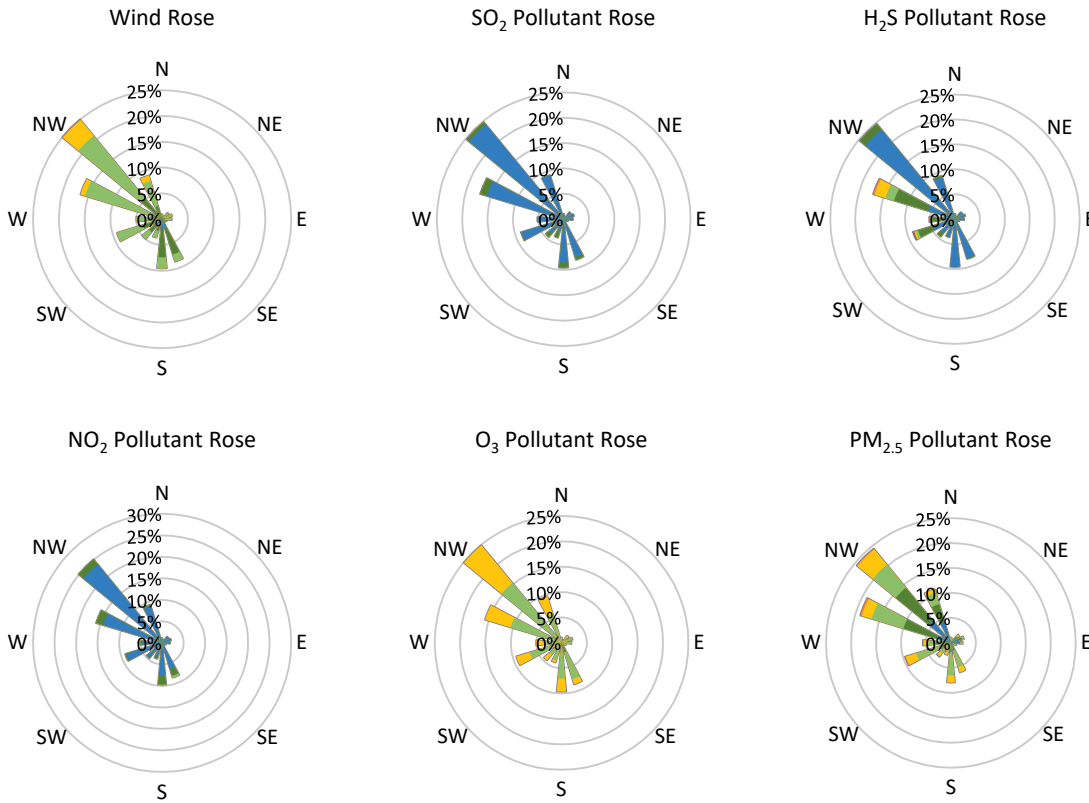
Pollutants		Month Records		24-Hour Records				1-Hour Records			
Name	Conc. Unit	Avg. Conc.	Total Uptime	Maximum		SAAQS Standard	Exceed Days	Maximum		SAAQS Standard	Exceed Hours
				Conc.	Time			Conc.	Time		
NO	ppb	0.6	92%	1.5	Mar-06	-	-	12.2	Mar-22 00:00	-	-
NO ₂	ppb	3.0	92%	6.6	Mar-07	106	0	23.6	Mar-21 22:00	159	0
NO _x	ppb	3.5	92%	7.6	Mar-07	-	-	35.0	Mar-22 00:00	-	-
SO ₂	ppb	0.5	93%	1.1	Mar-04	48	0	1.8	Mar-26 14:00	172	0
H ₂ S	ppb	1.1	93%	5.0	Mar-17	3.6	1	30.3	Mar-17 19:00	11	2
O ₃	ppb	34.5	94%	46.0	Mar-12	-	-	53.6	Mar-11 17:00	82	0
PM _{2.5}	µg/m ³	5.6	78%	11.7	Mar-12	28	0	26.6	Mar-12 22:00	-	-

SAAQS: Saskatchewan Ambient Air Quality Standards



* colored lines indicate 1-hr concentration data for all parameters; solid black lines indicate 24-hr concentrations for PM_{2.5}, NO₂, SO₂, and H₂S

GPAZ Yorkton Station - March 2019 Summary Report



Parameters	Unit	Color Code for Wind Speed and Pollution Concentration Class						
		0.3 ≤ WS < 1.4	1.4 ≤ WS < 3.1	3.1 ≤ WS < 7.8	7.8 ≤ WS < 10.8	10.8 ≤ WS < 13.6	WS ≥ 13.6	
SO ₂	ppb	0 ≤ C < 1	1 ≤ C < 5	5 ≤ C < 10	10 ≤ C < 57	57 ≤ C < 172	C ≥ 172	
NO ₂	ppb	0 ≤ C < 5	5 ≤ C < 15	15 ≤ C < 30	30 ≤ C < 100	100 ≤ C < 212	C ≥ 212	
H ₂ S	ppb	0 ≤ C < 1	1 ≤ C < 3.6	3.6 ≤ C < 5	5 ≤ C < 8	8 ≤ C < 10.8	C ≥ 10.8	
O ₃	ppb	0 ≤ C < 10	10 ≤ C < 20	20 ≤ C < 40	40 ≤ C < 60	60 ≤ C < 82	C ≥ 82	
PM _{2.5}	µg/m ³	0 ≤ C < 2	2 ≤ C < 4	4 ≤ C < 10	10 ≤ C < 20	20 ≤ C < 30	C ≥ 30	

Monthly Update

- Achieved >95.8% of scheduled uptime for all parameters except for PM_{2.5} (78.2%)
- Particulate analyzer was down for five days due to an operational issue
- Downtime of 4% due to routine daily internal zeroes and spans
- Station was calibrated on March 4
- Ozone analyzer was replaced and calibrated on March 11

Exceedance Summary (1- Hour Average - Exceedances Highlighted)

Exceedance Time	AQHI	NO ₂	NO	SO ₂	O ₃	NO _x	H ₂ S	PM _{2.5}	Temp	WD	WS
	-	ppb	ppb	ppb	ppb	ppb	ppb	µg/m ³	°C	deg	m/s
Mar-17 19:00	2.9	2.0	0.3	0.6	44.4	2.1	30.3	8.3	0.4	241.5	2.4
Mar-17 20:00	3.0	3.2	0.5	0.5	45.3	3.6	17.8	7.6	-1.1	240.4	3.0

Exceedance Summary (24- Hour Average - Exceedances Highlighted)

Exceedance Time	AQHI	NO ₂	NO	SO ₂	O ₃	NO _x	H ₂ S	PM _{2.5}	Temp	WD	WS
	-	ppb	ppb	ppb	ppb	ppb	ppb	µg/m ³	°C	deg	m/s
Mar-17	2.9	2.7	0.3	0.5	45.2	2.9	5.0	6.0	-1.4	286.1	4.0