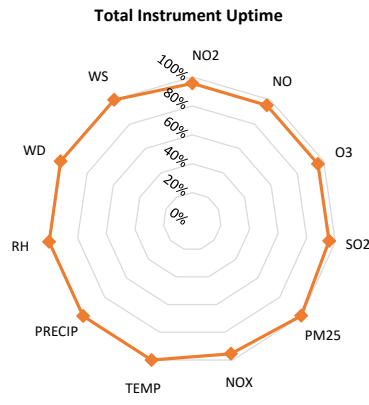
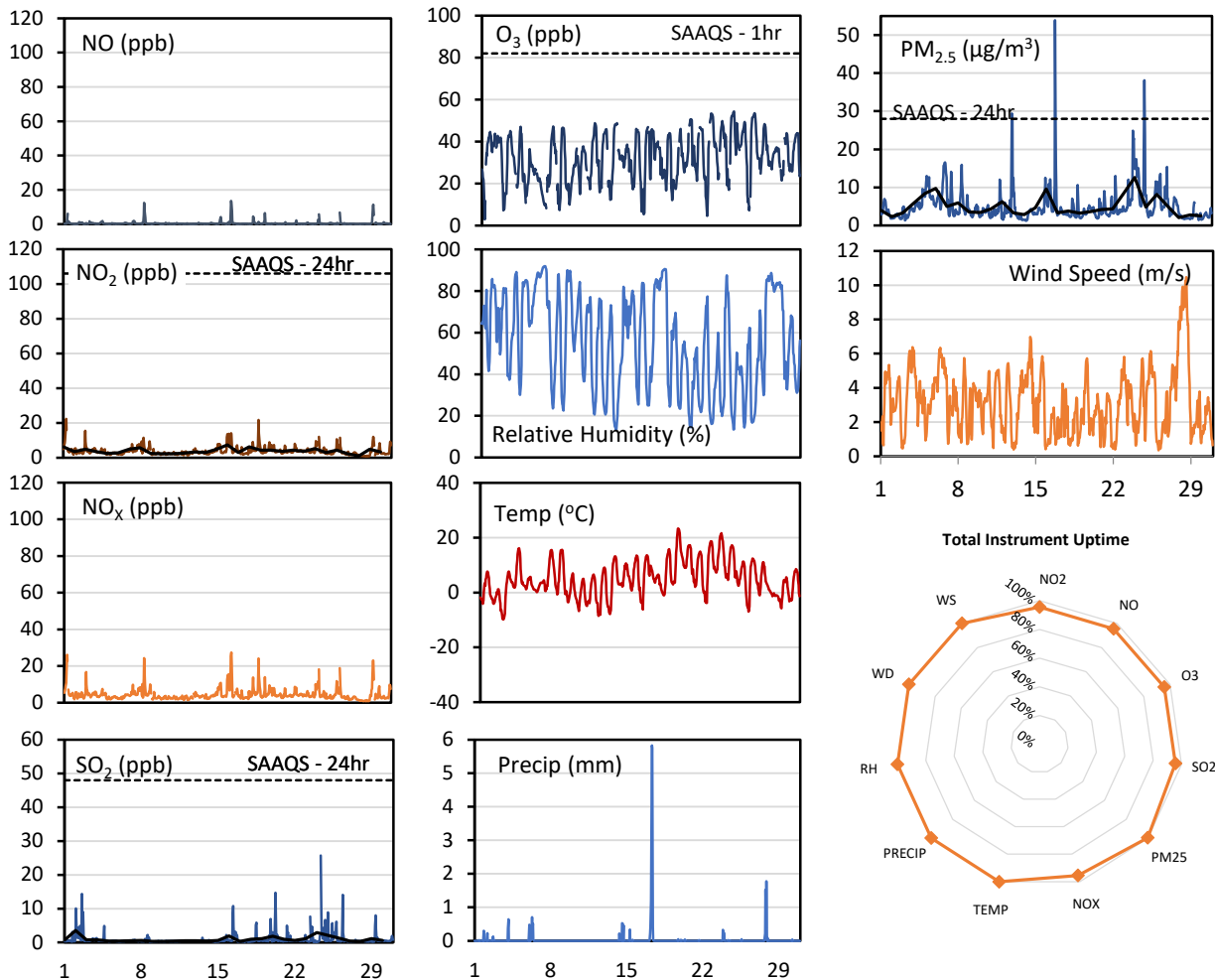
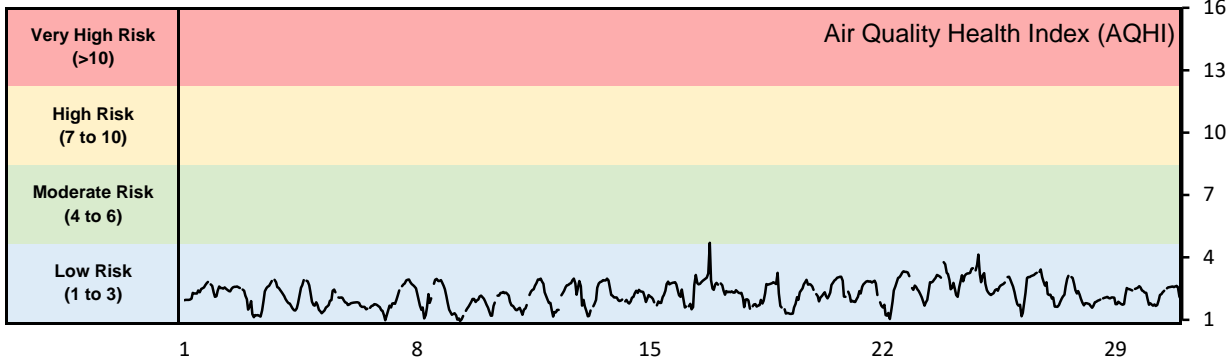


GPAZ East Regina Station - April 2019 Summary Report

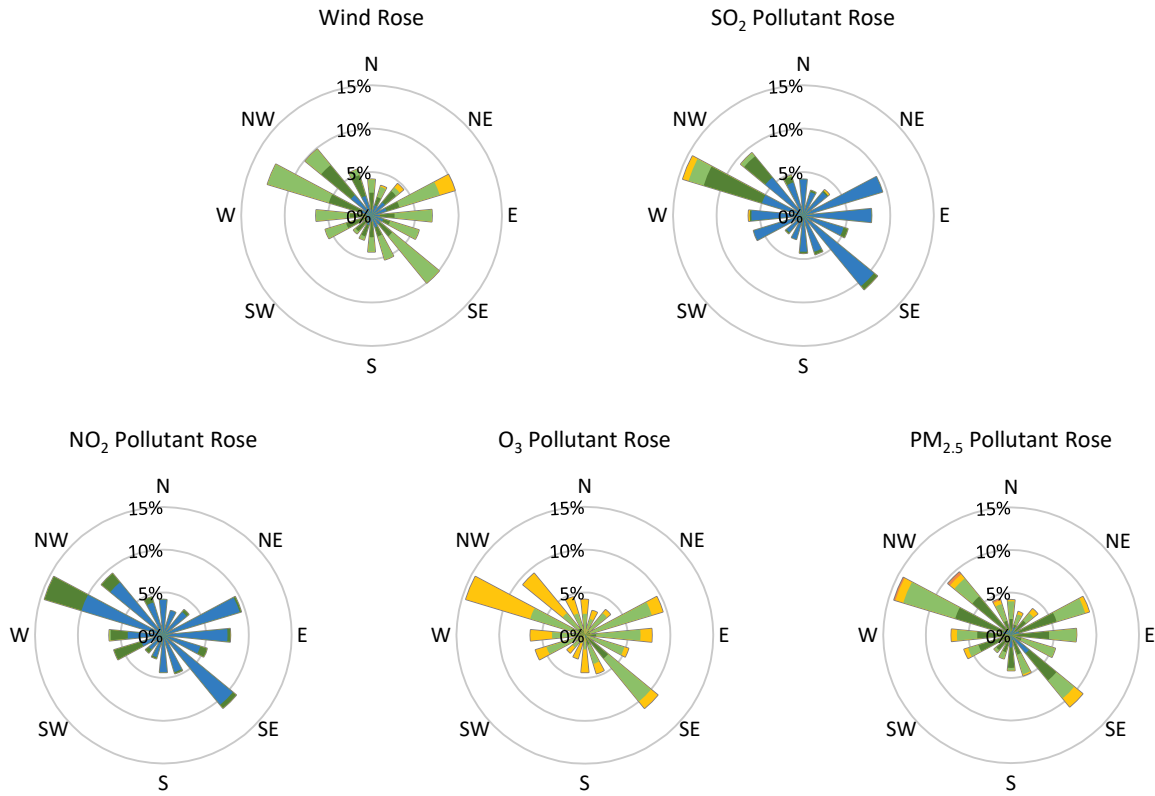
Pollutants		Month Records		24-Hour Records				1-Hour Records			
Name	Conc. Unit	Avg. Conc.	Total Uptime	Maximum		SAAQS Standard	Exceed Days	Maximum		SAAQS Standard	Exceed Hours
				Conc.	Time			Conc.	Time		
NO	ppb	0.5	96%	2.0	Apr-16	-	-	13.6	Apr-16 07:00	-	-
NO ₂	ppb	3.9	96%	7.4	Apr-16	106	0	22.4	Apr-01 06:00	159	0
NO _x	ppb	4.5	96%	9.7	Apr-16	-	-	27.4	Apr-16 08:00	-	-
SO ₂	ppb	0.9	96%	3.5	Apr-02	48	0	25.7	Apr-24 09:00	172	0
O ₃	ppb	32.2	96%	41.5	Apr-25	-	-	54.4	Apr-24 18:00	82	0
PM _{2.5}	µg/m ³	5.0	100%	12.6	Apr-24	28	0	53.9	Apr-16 19:00	-	-

SAAQS: Saskatchewan Ambient Air Quality Standards



* colored lines indicate 1-hr concentration data for all parameters; solid black lines indicate 24-hr concentrations for PM_{2.5}, NO₂, and SO₂

GPAZ East Regina Station - April 2019 Summary Report



Parameters	Unit	Color Code for Wind Speed and Pollution Concentration Class						
		$0.3 \leq WS < 1.4$	$1.4 \leq WS < 3.1$	$3.1 \leq WS < 7.8$	$7.8 \leq WS < 10.8$	$10.8 \leq WS < 13.6$	$WS \geq 13.6$	
Wind Speed	m/s	$0 \leq C < 1$	$1 \leq C < 5$	$5 \leq C < 10$	$10 \leq C < 57$	$57 \leq C < 172$	$C \geq 172$	
SO ₂	ppb	$0 \leq C < 5$	$5 \leq C < 15$	$15 \leq C < 30$	$30 \leq C < 100$	$100 \leq C < 212$	$C \geq 212$	
NO ₂	ppb	$0 \leq C < 10$	$10 \leq C < 20$	$20 \leq C < 40$	$40 \leq C < 60$	$60 \leq C < 82$	$C \geq 82$	
O ₃	ppb	$0 \leq C < 2$	$2 \leq C < 4$	$4 \leq C < 10$	$10 \leq C < 20$	$20 \leq C < 30$	$C \geq 30$	
PM _{2.5}	$\mu\text{g}/\text{m}^3$							

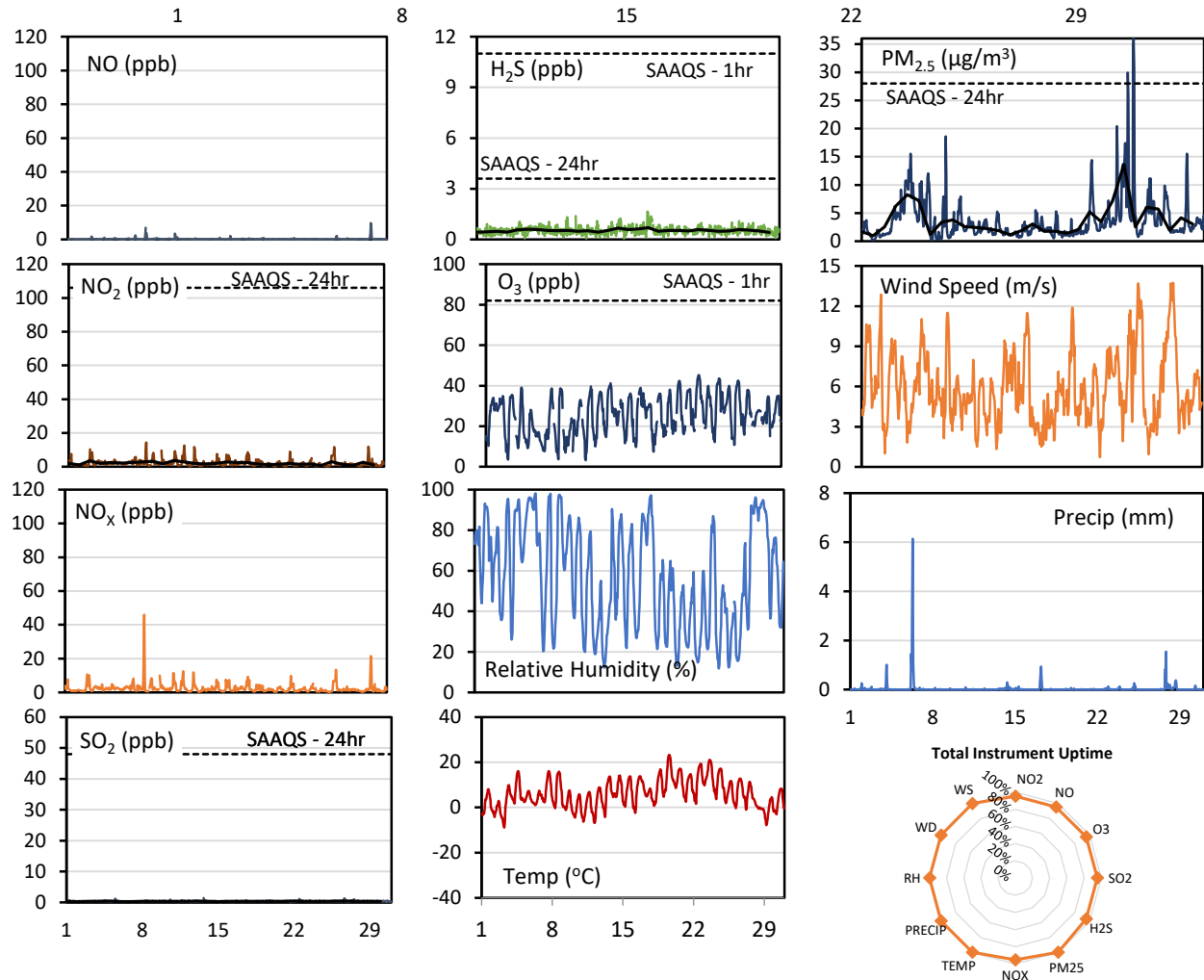
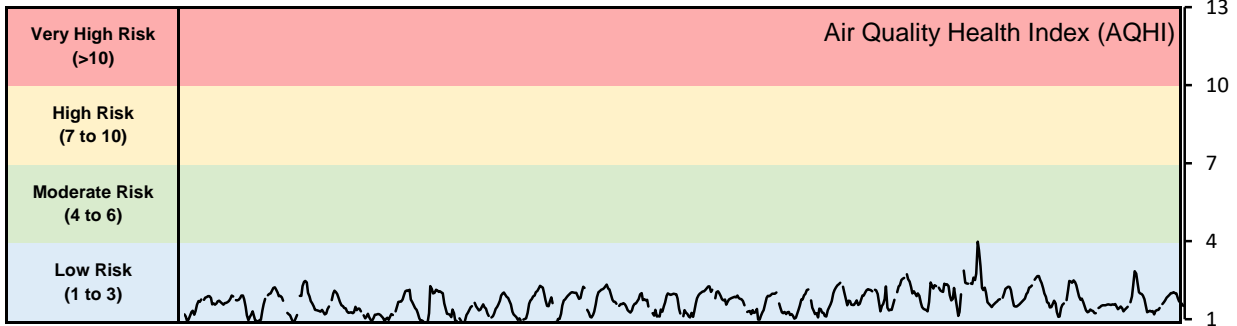
Monthly Update

- Achieved >99% of scheduled uptime for all parameters
- Downtime of 4% results from routine daily internal zeroes and spans

GPAZ Pense Station - April 2019 Summary Report

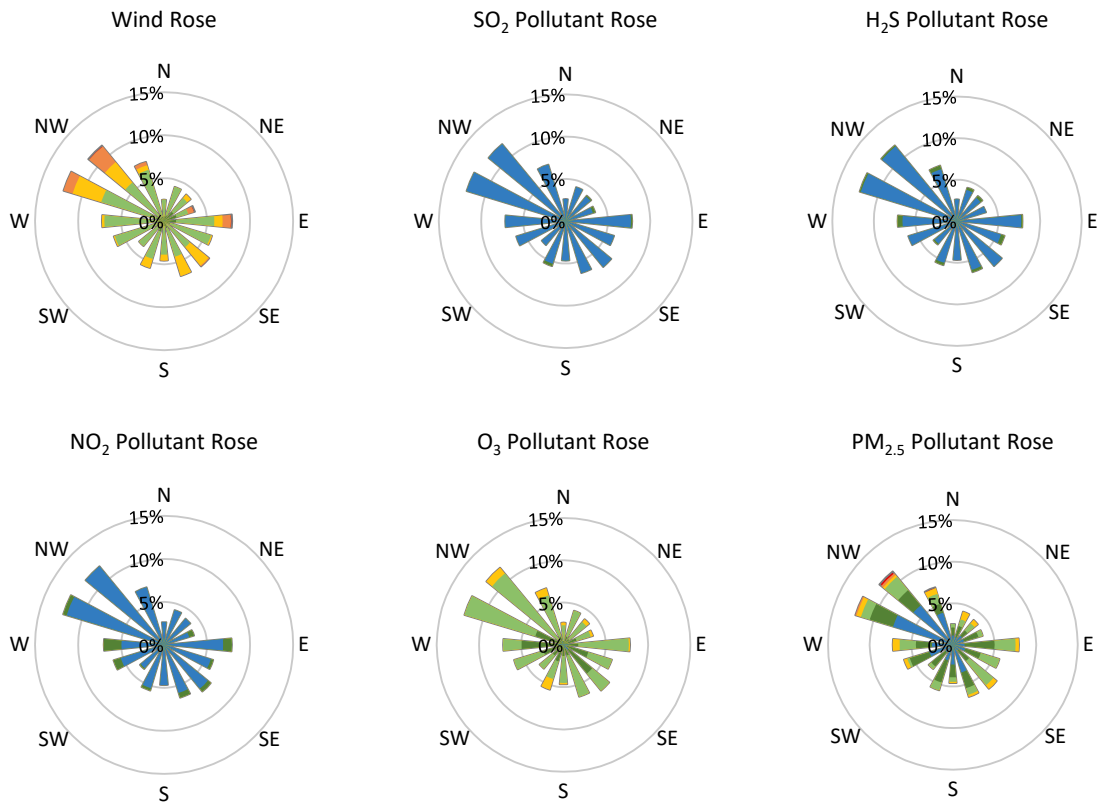
Pollutants		Month Records		24-Hour Records				1-Hour Records			
Name	Conc. Unit	Avg. Conc.	Total Uptime	Maximum		SAAQS Standard	Exceed Days	Maximum		SAAQS Standard	Exceed Hours
				Conc.	Time			Conc.	Time		
NO	ppb	0.2	95%	1.1	Apr-29	-	-	9.7	Apr-29 12:00	-	-
NO ₂	ppb	2.1	95%	3.7	Apr-11	106	0	14.4	Apr-08 09:00	159	0
NO _x	ppb	2.3	95%	5.0	Apr-08	-	-	46.0	Apr-08 09:00	-	-
SO ₂	ppb	0.4	95%	0.5	Apr-22	48	0	1.4	Apr-13 16:00	172	0
H ₂ S	ppb	0.5	95%	0.7	Apr-18	3.6	0	1.7	Apr-17 22:00	11	0
O ₃	ppb	25.3	95%	33.9	Apr-22	-	-	45.3	Apr-22 15:00	82	0
PM _{2.5}	µg/m ³	3.7	100%	13.6	Apr-24	28	0	36.0	Apr-24 20:00	-	-

SAAQS: Saskatchewan Ambient Air Quality Standards



* colored lines indicate 1-hr concentration data for all parameters; solid black lines indicate 24-hr concentrations for PM_{2.5}, NO₂, SO₂, and H₂S

GPAZ Pense Station - April 2019 Summary Report



Parameters	Unit	Color Code for Wind Speed and Pollution Concentration Class						
Wind Speed	m/s	$0.3 \leq WS < 1.4$	$1.4 \leq WS < 3.1$	$3.1 \leq WS < 7.8$	$7.8 \leq WS < 10.8$	$10.8 \leq WS < 13.6$	$WS \geq 13.6$	
SO ₂	ppb	$0 \leq C < 1$	$1 \leq C < 5$	$5 \leq C < 10$	$10 \leq C < 57$	$57 \leq C < 172$	$C \geq 172$	
NO ₂	ppb	$0 \leq C < 5$	$5 \leq C < 15$	$15 \leq C < 30$	$30 \leq C < 100$	$100 \leq C < 212$	$C \geq 212$	
H ₂ S	ppb	$0 \leq C < 1$	$1 \leq C < 3.6$	$3.6 \leq C < 5$	$5 \leq C < 8$	$8 \leq C < 10.8$	$C \geq 10.8$	
O ₃	ppb	$0 \leq C < 10$	$10 \leq C < 20$	$20 \leq C < 40$	$40 \leq C < 60$	$60 \leq C < 82$	$C \geq 82$	
PM _{2.5}	µg/m ³	$0 \leq C < 2$	$2 \leq C < 4$	$4 \leq C < 10$	$10 \leq C < 20$	$20 \leq C < 30$	$C \geq 30$	

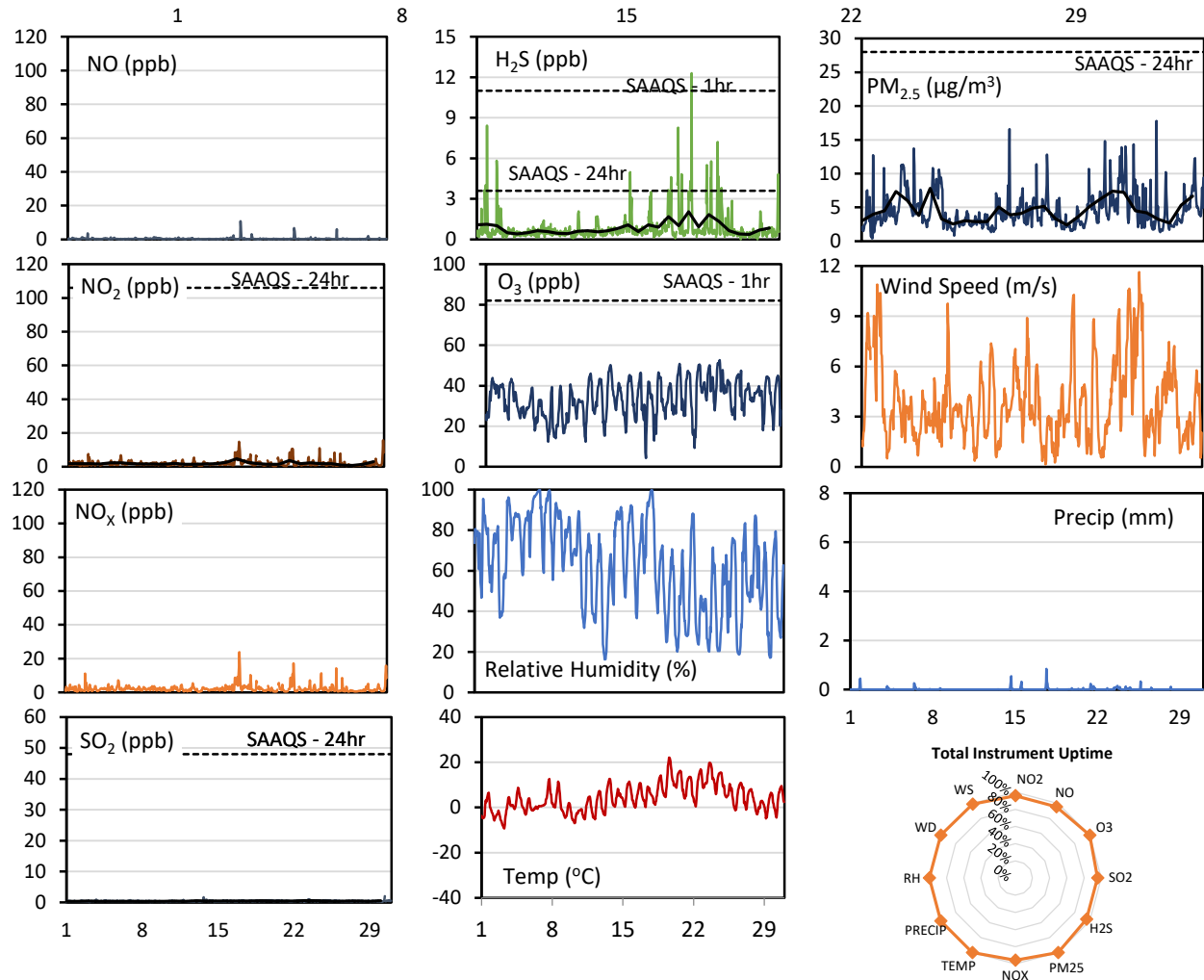
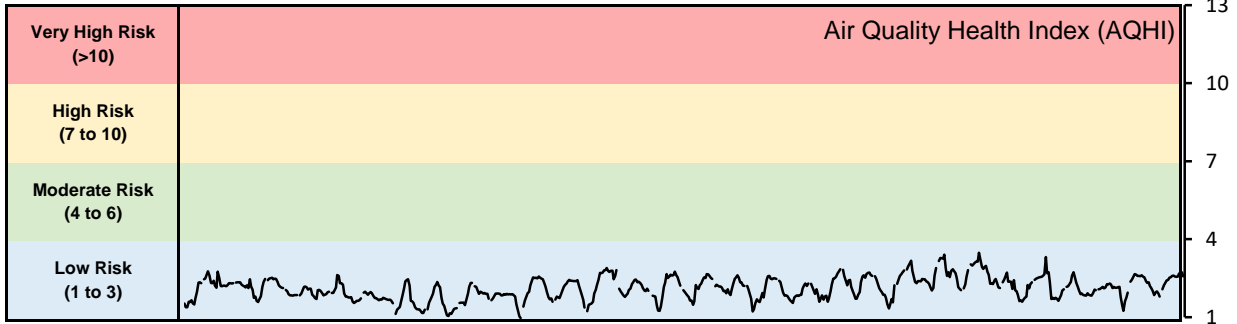
Monthly Update

- Achieved > 99% of scheduled uptime for all parameters
- Downtime of 4% due to routine daily internal zeroes and spans

GPAZ Yorkton Station - April 2019 Summary Report

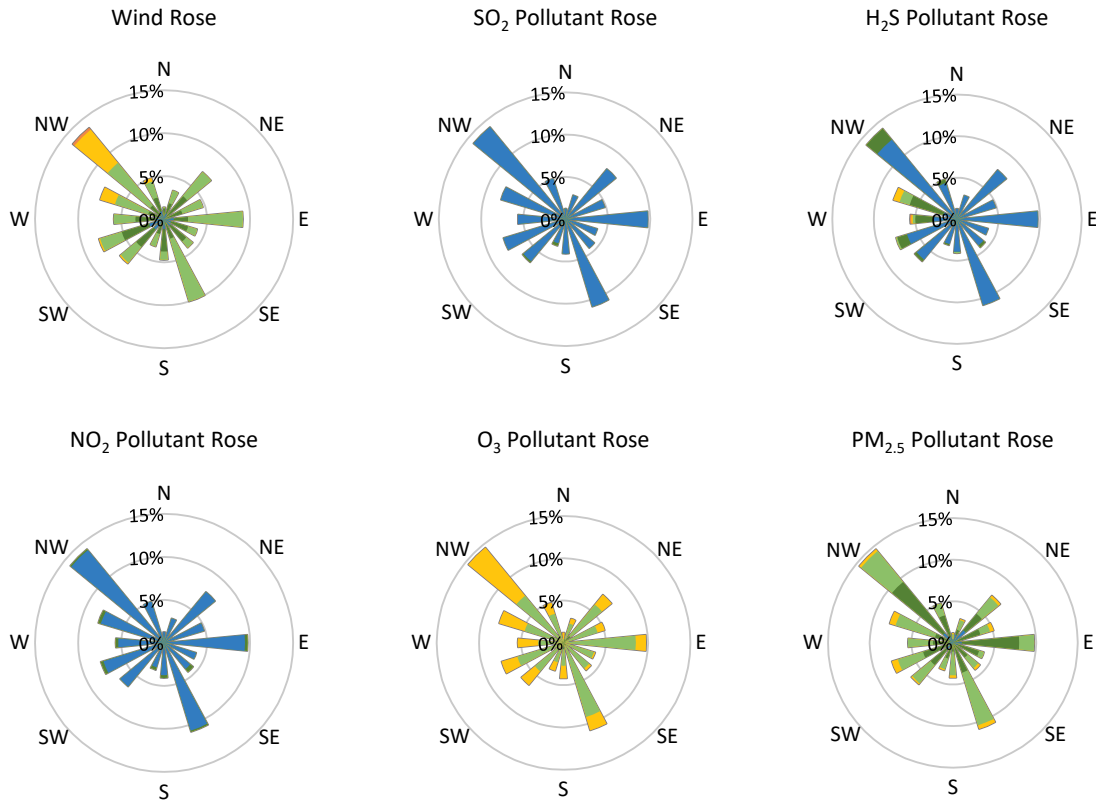
Pollutants		Month Records		24-Hour Records				1-Hour Records			
Name	Conc. Unit	Avg. Conc.	Total Uptime	Maximum		SAAQS Standard	Exceed Days	Maximum		SAAQS Standard	Exceed Hours
				Conc.	Time			Conc.	Time		
NO	ppb	0.4	96%	1.1	Apr-17	-	-	10.8	Apr-17 06:00	-	-
NO ₂	ppb	1.9	96%	4.7	Apr-17	106	0	15.6	Apr-30 22:00	159	0
NO _x	ppb	2.2	96%	5.7	Apr-17	-	-	23.8	Apr-17 06:00	-	-
SO ₂	ppb	0.4	96%	0.6	Apr-23	48	0	2.0	Apr-30 09:00	172	0
H ₂ S	ppb	0.8	96%	2.1	Apr-22	3.6	0	12.3	Apr-22 07:00	11	1
O ₃	ppb	33.4	100%	42.2	Apr-24	-	-	52.6	Apr-24 18:00	82	0
PM _{2.5}	µg/m ³	4.5	100%	7.8	Apr-07	28	0	17.8	Apr-26 20:00	-	-

SAAQS: Saskatchewan Ambient Air Quality Standards



* colored lines indicate 1-hr concentration data for all parameters; solid black lines indicate 24-hr concentrations for PM_{2.5}, NO₂, SO₂, and H₂S

GPAZ Yorkton Station - April 2019 Summary Report



Parameters	Unit	Color Code for Wind Speed and Pollution Concentration Class						
Wind Speed	m/s	0.3 ≤ WS < 1.4	1.4 ≤ WS < 3.1	3.1 ≤ WS < 7.8	7.8 ≤ WS < 10.8	10.8 ≤ WS < 13.6	WS ≥ 13.6	
SO ₂	ppb	0 ≤ C < 1	1 ≤ C < 5	5 ≤ C < 10	10 ≤ C < 57	57 ≤ C < 172	C ≥ 172	
NO ₂	ppb	0 ≤ C < 5	5 ≤ C < 15	15 ≤ C < 30	30 ≤ C < 100	100 ≤ C < 212	C ≥ 212	
H ₂ S	ppb	0 ≤ C < 1	1 ≤ C < 3.6	3.6 ≤ C < 5	5 ≤ C < 8	8 ≤ C < 10.8	C ≥ 10.8	
O ₃	ppb	0 ≤ C < 10	10 ≤ C < 20	20 ≤ C < 40	40 ≤ C < 60	60 ≤ C < 82	C ≥ 82	
PM _{2.5}	µg/m ³	0 ≤ C < 2	2 ≤ C < 4	4 ≤ C < 10	10 ≤ C < 20	20 ≤ C < 30	C ≥ 30	

Monthly Update

- Achieved > 99% of scheduled uptime for all parameters
- Downtime of 4% due to routine daily internal zeroes and spans

Exceedance Summary (1- Hour Average - Exceedances Highlighted)

Exceedance Time	AQHI	NO ₂	NO	SO ₂	O ₃	NO _x	H ₂ S	PM _{2.5}	Temp	WD	WS
	-	ppb	ppb	ppb	ppb	ppb	ppb	µg/m ³	°C	deg	m/s
Apr-22 07:00	2.2	10.6	6.7	0.6	14.5	17.3	12.3	12.4	4.3	38.9	0.6