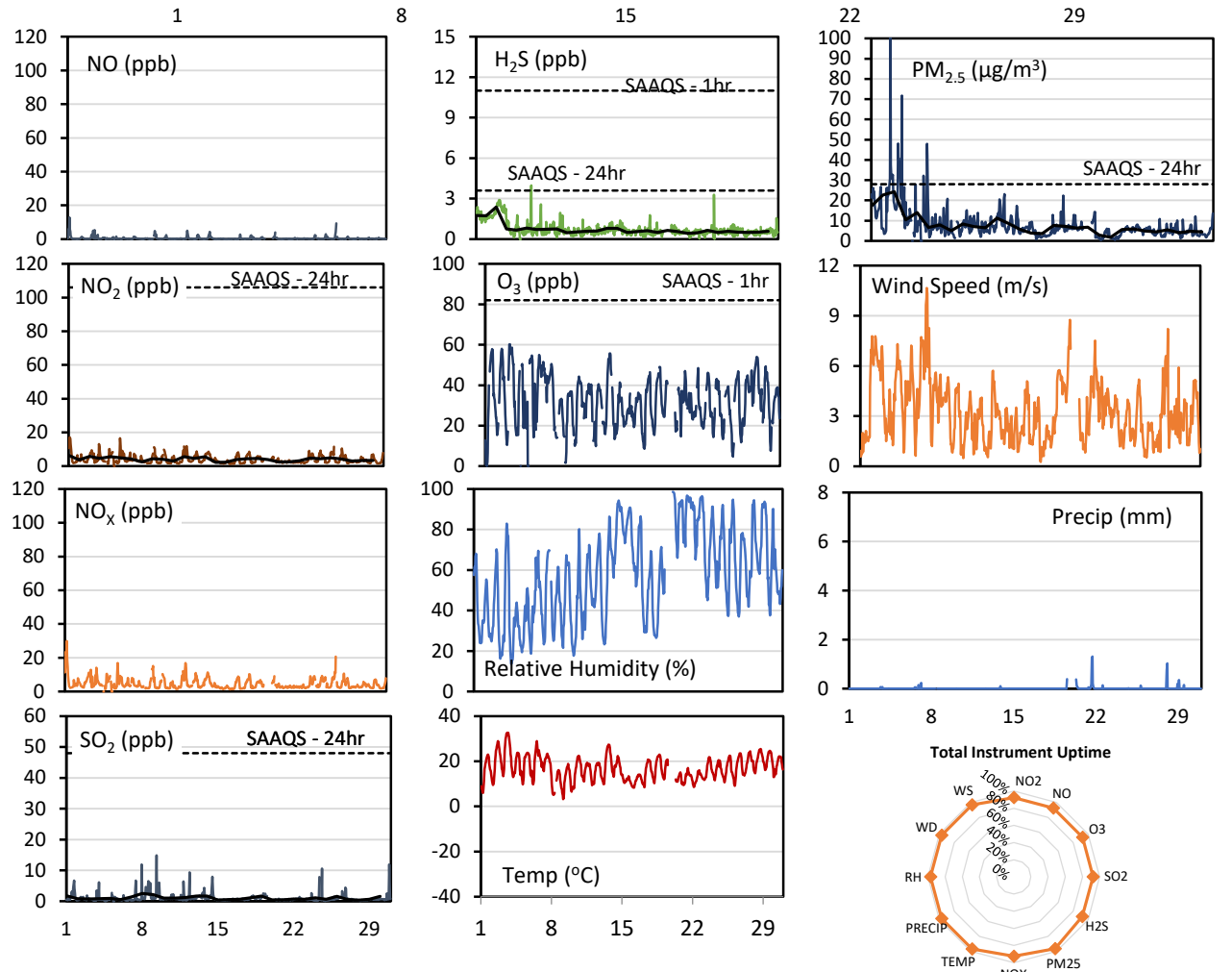
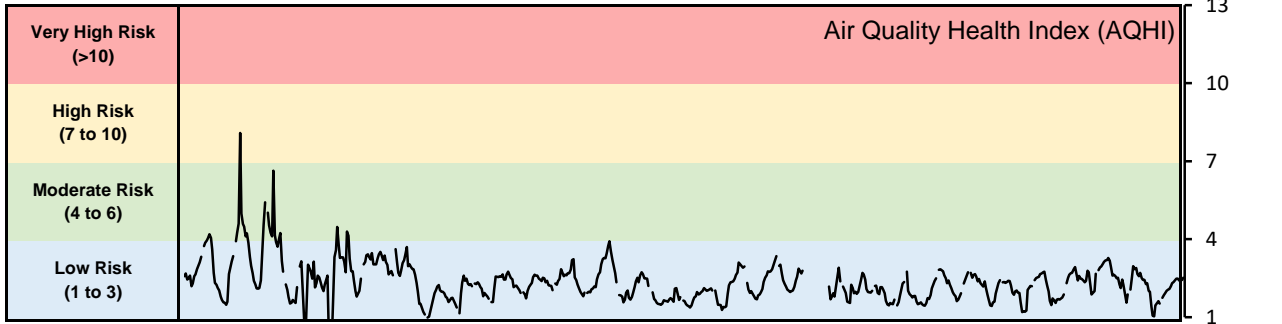


GPAZ Regina Station - June 2019 Summary Report

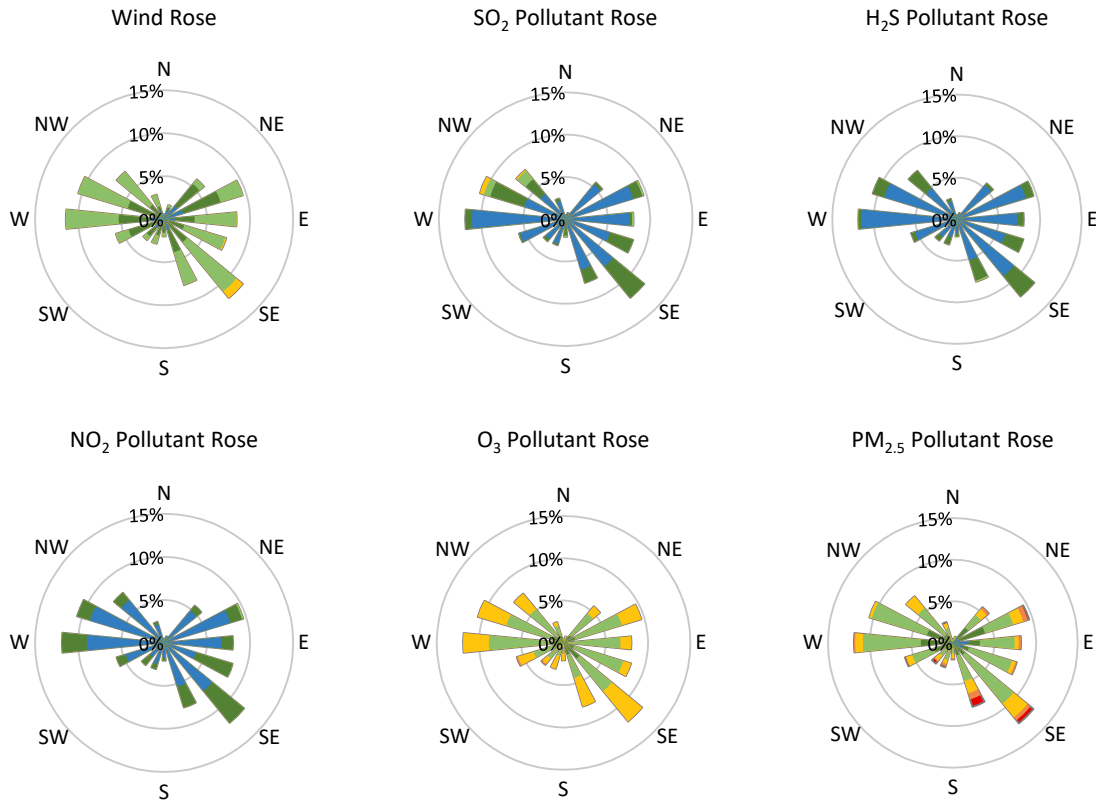
Pollutants		Month Records		24-Hour Records				1-Hour Records			
Name	Conc. Unit	Avg. Conc.	Total Uptime	Maximum		SAAQS Standard	Exceed Days	Maximum		SAAQS Standard	Exceed Hours
				Conc.	Time			Conc.	Time		
NO	ppb	0.5	92%	1.7	Jun-01	-	-	12.9	Jun-01 04:00	-	-
NO ₂	ppb	4.1	92%	6.4	Jun-01	106	0	17.1	Jun-01 03:00	159	0
NO _x	ppb	4.5	92%	8.5	Jun-01	-	-	29.9	Jun-01 04:00	-	-
SO ₂	ppb	1.0	92%	2.5	Jun-08	48	0	14.9	Jun-09 08:00	172	0
H ₂ S	ppb	0.7	92%	2.4	Jun-03	3.6	0	4.0	Jun-06 11:00	11	0
O ₃	ppb	32.0	92%	43.7	Jun-28	-	-	60.2	Jun-03 12:00	82	0
PM _{2.5}	µg/m ³	7.8	97%	24.3	Jun-03	28	0	101.1	Jun-02 16:00	-	-

SAAQS: Saskatchewan Ambient Air Quality Standards



* colored lines indicate 1-hr concentration data for all parameters; solid black lines indicate 24-hr concentrations for PM_{2.5}, NO₂, SO₂, and H₂S

GPAZ Regina Station - June 2019 Summary Report



Parameters	Unit	Color Code for Wind Speed and Pollution Concentration Class						
Wind Speed	m/s	0.3 ≤ WS < 1.4	1.4 ≤ WS < 3.1	3.1 ≤ WS < 7.8	7.8 ≤ WS < 10.8	10.8 ≤ WS < 13.6	WS ≥ 13.6	
SO ₂	ppb	0 ≤ C < 1	1 ≤ C < 5	5 ≤ C < 10	10 ≤ C < 57	57 ≤ C < 172	C ≥ 172	
NO ₂	ppb	0 ≤ C < 5	5 ≤ C < 15	15 ≤ C < 30	30 ≤ C < 100	100 ≤ C < 212	C ≥ 212	
H ₂ S	ppb	0 ≤ C < 1	1 ≤ C < 3.6	3.6 ≤ C < 5	5 ≤ C < 8	8 ≤ C < 10.8	C ≥ 10.8	
O ₃	ppb	0 ≤ C < 10	10 ≤ C < 20	20 ≤ C < 40	40 ≤ C < 60	60 ≤ C < 82	C ≥ 82	
PM _{2.5}	µg/m ³	0 ≤ C < 2	2 ≤ C < 4	4 ≤ C < 10	10 ≤ C < 20	20 ≤ C < 30	C ≥ 30	

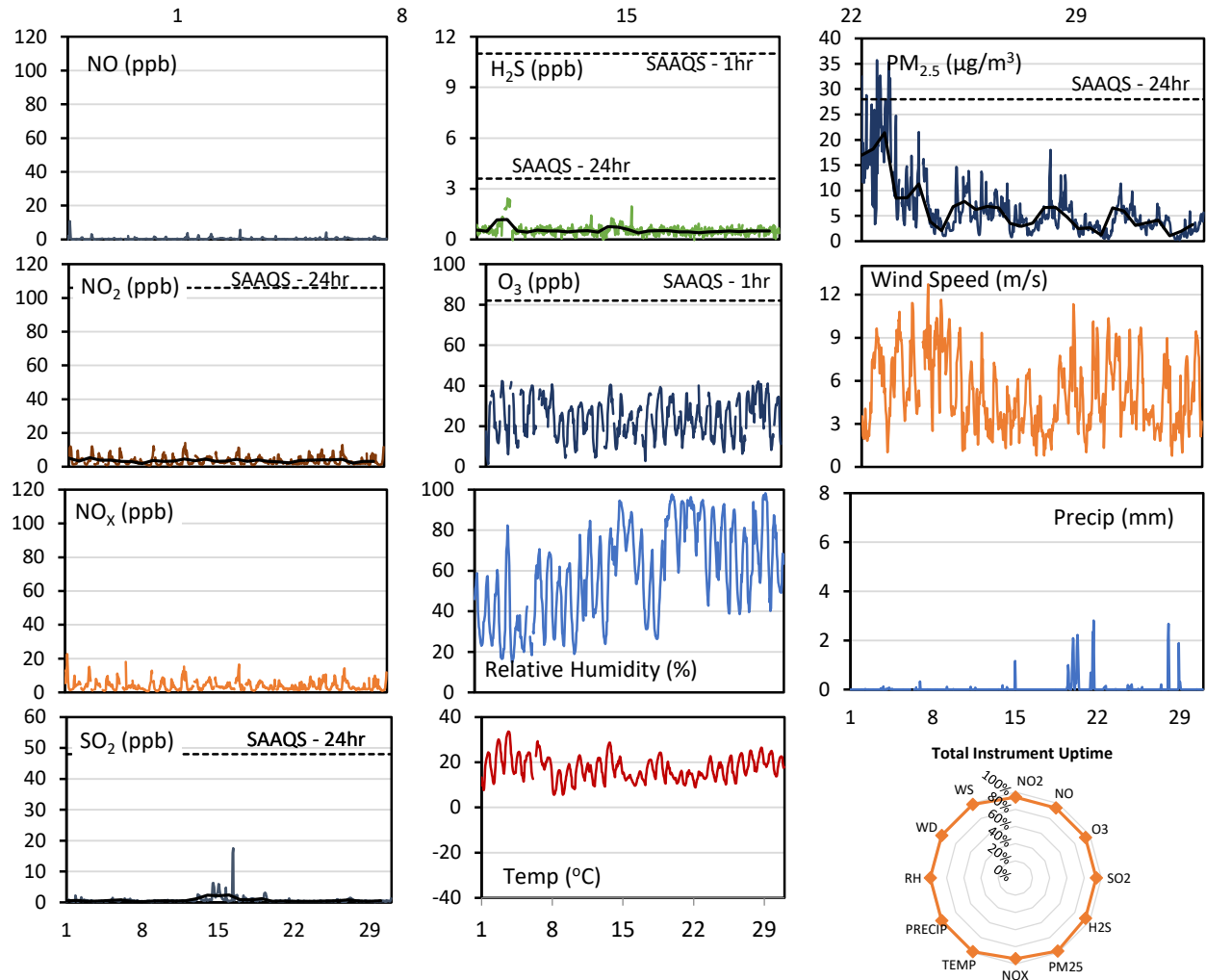
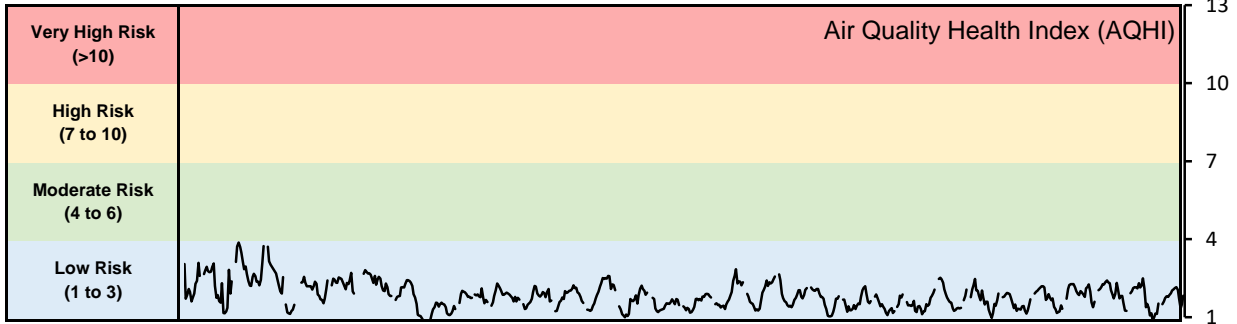
Monthly Update

- Achieved > 96.5% of scheduled uptime for all parameters
- Downtime of 4% due to routine daily internal zeroes and spans
- Station was calibrated on June 4

GPAZ Pense Station - June 2019 Summary Report

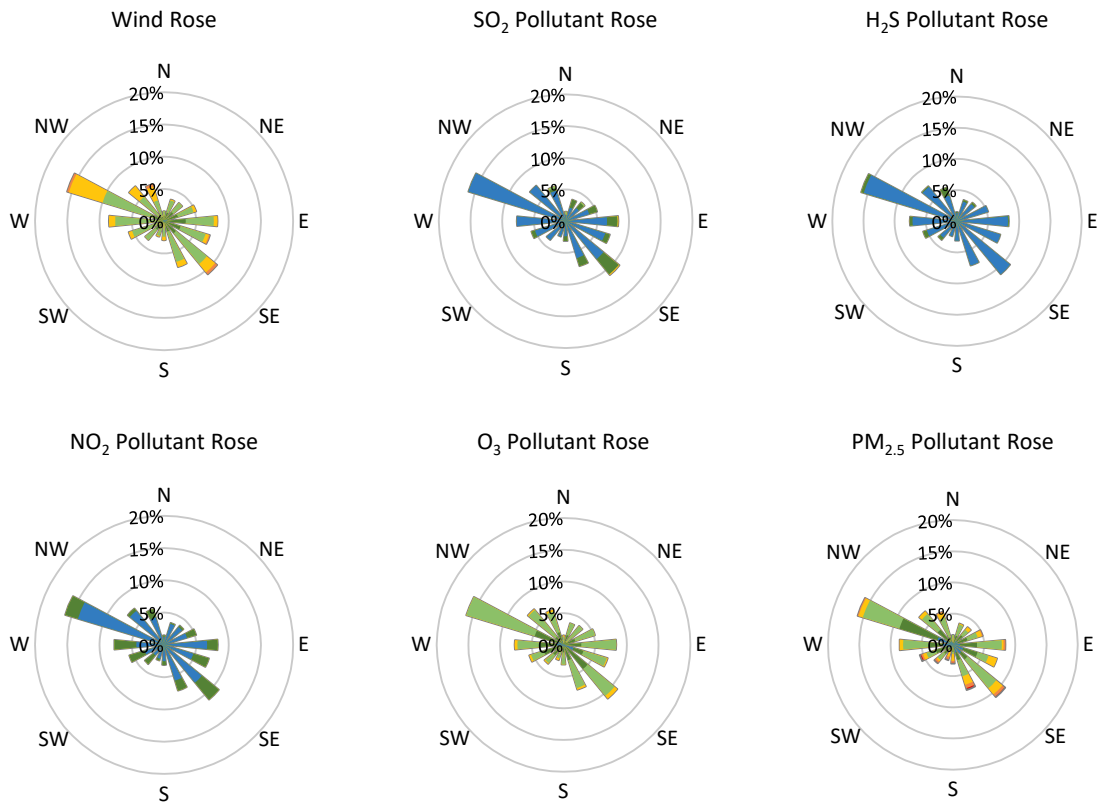
Pollutants		Month Records		24-Hour Records				1-Hour Records			
Name	Conc. Unit	Avg. Conc.	Total Uptime	Maximum		SAAQS Standard	Exceed Days	Maximum		SAAQS Standard	Exceed Hours
				Conc.	Time			Conc.	Time		
NO	ppb	0.4	94%	1.1	Jun-01	-	-	10.8	Jun-01 05:00	-	-
NO ₂	ppb	3.6	94%	5.3	Jun-03	106	0	14.1	Jun-12 02:00	159	0
NO _x	ppb	3.9	94%	6.2	Jun-01	-	-	22.7	Jun-01 05:00	-	-
SO ₂	ppb	0.7	94%	2.4	Jun-16	48	0	17.5	Jun-16 09:00	172	0
H ₂ S	ppb	0.5	94%	1.2	Jun-04	3.6	0	2.4	Jun-04 01:00	11	0
O ₃	ppb	23.9	94%	34.5	Jun-28	-	-	42.3	Jun-02 15:00	82	0
PM _{2.5}	µg/m ³	6.2	98%	21.4	Jun-03	28	0	35.7	Jun-02 08:00	-	-

SAAQS: Saskatchewan Ambient Air Quality Standards



* colored lines indicate 1-hr concentration data for all parameters; solid black lines indicate 24-hr concentrations for PM_{2.5}, NO₂, SO₂, and H₂S

GPAZ Pense Station - June 2019 Summary Report



Parameters	Unit	Color Code for Wind Speed and Pollution Concentration Class						
Wind Speed	m/s	$0.3 \leq WS < 1.4$	$1.4 \leq WS < 3.1$	$3.1 \leq WS < 7.8$	$7.8 \leq WS < 10.8$	$10.8 \leq WS < 13.6$	$WS \geq 13.6$	
SO ₂	ppb	$0 \leq C < 1$	$1 \leq C < 5$	$5 \leq C < 10$	$10 \leq C < 57$	$57 \leq C < 172$	$C \geq 172$	
NO ₂	ppb	$0 \leq C < 5$	$5 \leq C < 15$	$15 \leq C < 30$	$30 \leq C < 100$	$100 \leq C < 212$	$C \geq 212$	
H ₂ S	ppb	$0 \leq C < 1$	$1 \leq C < 3.6$	$3.6 \leq C < 5$	$5 \leq C < 8$	$8 \leq C < 10.8$	$C \geq 10.8$	
O ₃	ppb	$0 \leq C < 10$	$10 \leq C < 20$	$20 \leq C < 40$	$40 \leq C < 60$	$60 \leq C < 82$	$C \geq 82$	
PM _{2.5}	µg/m ³	$0 \leq C < 2$	$2 \leq C < 4$	$4 \leq C < 10$	$10 \leq C < 20$	$20 \leq C < 30$	$C \geq 30$	

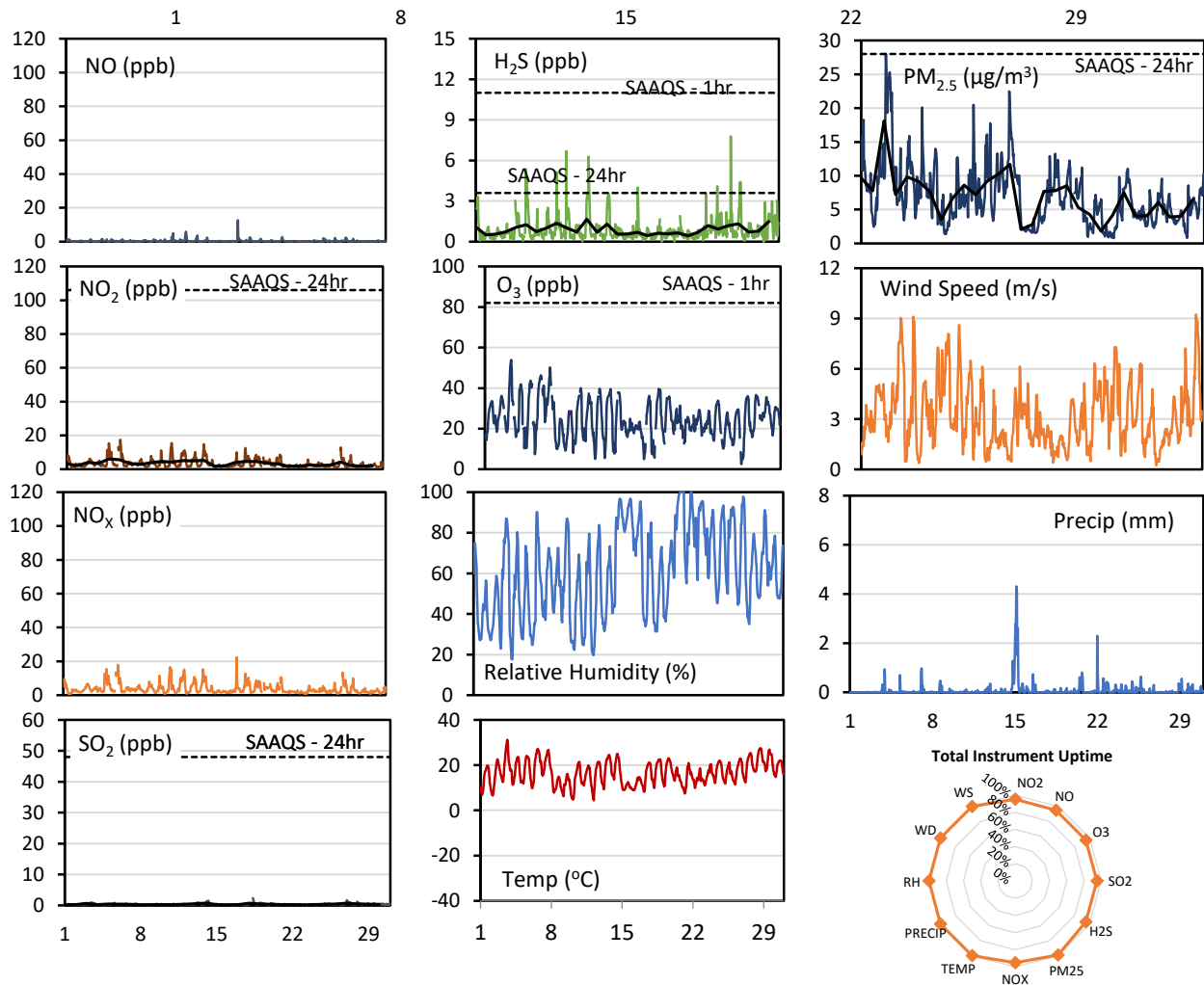
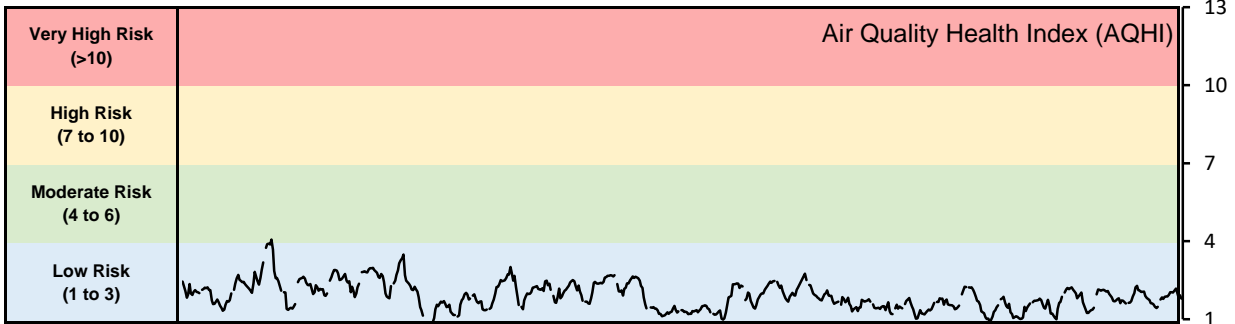
Monthly Update

- Achieved > 98.1% of scheduled uptime for all parameters
- Downtime of 4% due to routine daily internal zeroes and spans
- Station was calibrated on June 3

GPAZ Yorkton Station - June 2019 Summary Report

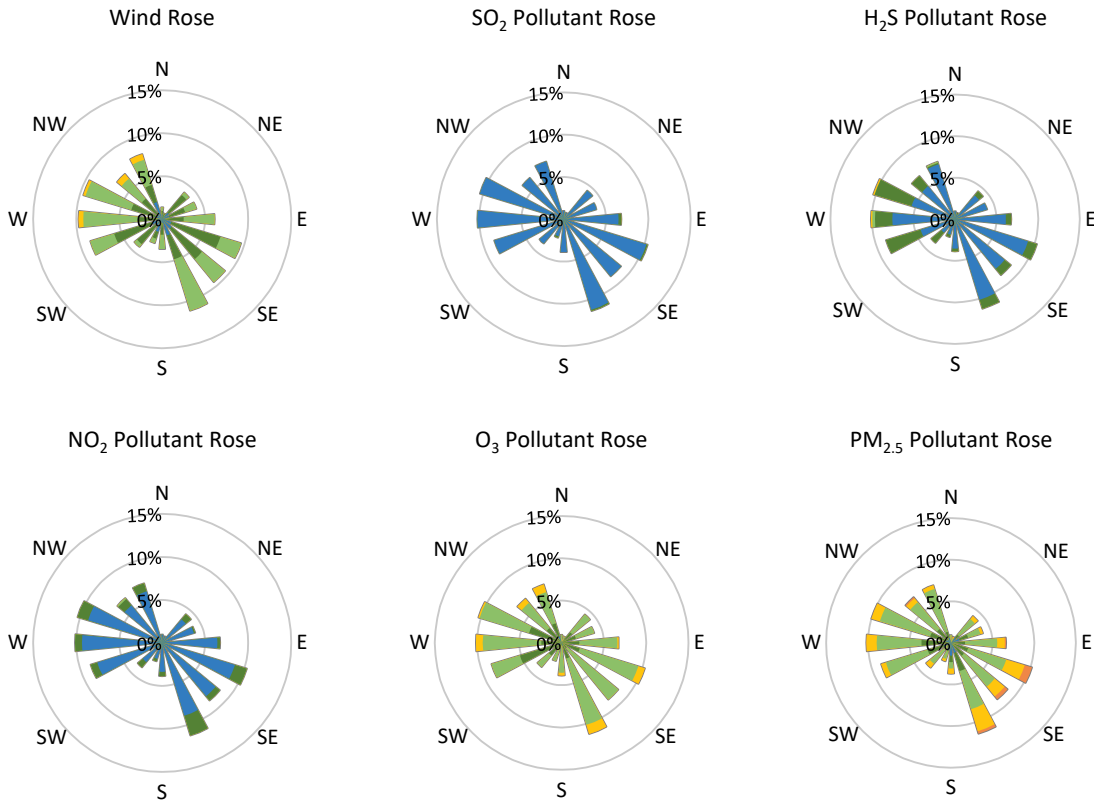
Pollutants		Month Records		24-Hour Records				1-Hour Records			
Name	Conc. Unit	Avg. Conc.	Total Uptime	Maximum		SAAQS Standard	Exceed Days	Maximum		SAAQS Standard	Exceed Hours
				Conc.	Time			Conc.	Time		
NO	ppb	0.4	95%	1.2	Jun-17	-	-	12.7	Jun-17 03:00	-	-
NO ₂	ppb	3.4	95%	6.1	Jun-05	106	0	17.4	Jun-06 02:00	159	0
NO _x	ppb	3.7	95%	6.4	Jun-05	-	-	22.4	Jun-17 03:00	-	-
SO ₂	ppb	0.4	95%	0.7	Jun-18	48	0	2.3	Jun-18 08:00	172	0
H ₂ S	ppb	0.9	95%	1.7	Jun-12	3.6	0	7.8	Jun-26 06:00	11	0
O ₃	ppb	24.6	95%	35.3	Jun-07	-	-	53.9	Jun-03 16:00	82	0
PM _{2.5}	µg/m ³	6.9	99%	18.1	Jun-03	28	0	28.0	Jun-03 04:00	-	-

SAAQS: Saskatchewan Ambient Air Quality Standards



* colored lines indicate 1-hr concentration data for all parameters; solid black lines indicate 24-hr concentrations for PM_{2.5}, NO₂, SO₂, and H₂S

GPAZ Yorkton Station - June 2019 Summary Report



Parameters	Unit	Color Code for Wind Speed and Pollution Concentration Class						
		$0.3 \leq WS < 1.4$	$1.4 \leq WS < 3.1$	$3.1 \leq WS < 7.8$	$7.8 \leq WS < 10.8$	$10.8 \leq WS < 13.6$	$WS \geq 13.6$	
SO ₂	ppb	$0 \leq C < 1$	$1 \leq C < 5$	$5 \leq C < 10$	$10 \leq C < 57$	$57 \leq C < 172$	$C \geq 172$	
NO ₂	ppb	$0 \leq C < 5$	$5 \leq C < 15$	$15 \leq C < 30$	$30 \leq C < 100$	$100 \leq C < 212$	$C \geq 212$	
H ₂ S	ppb	$0 \leq C < 1$	$1 \leq C < 3.6$	$3.6 \leq C < 5$	$5 \leq C < 8$	$8 \leq C < 10.8$	$C \geq 10.8$	
O ₃	ppb	$0 \leq C < 10$	$10 \leq C < 20$	$20 \leq C < 40$	$40 \leq C < 60$	$60 \leq C < 82$	$C \geq 82$	
PM _{2.5}	$\mu\text{g}/\text{m}^3$	$0 \leq C < 2$	$2 \leq C < 4$	$4 \leq C < 10$	$10 \leq C < 20$	$20 \leq C < 30$	$C \geq 30$	

Monthly Update

- Achieved > 99% of scheduled uptime for all parameters
- Downtime of 4% due to routine daily internal zeroes and spans