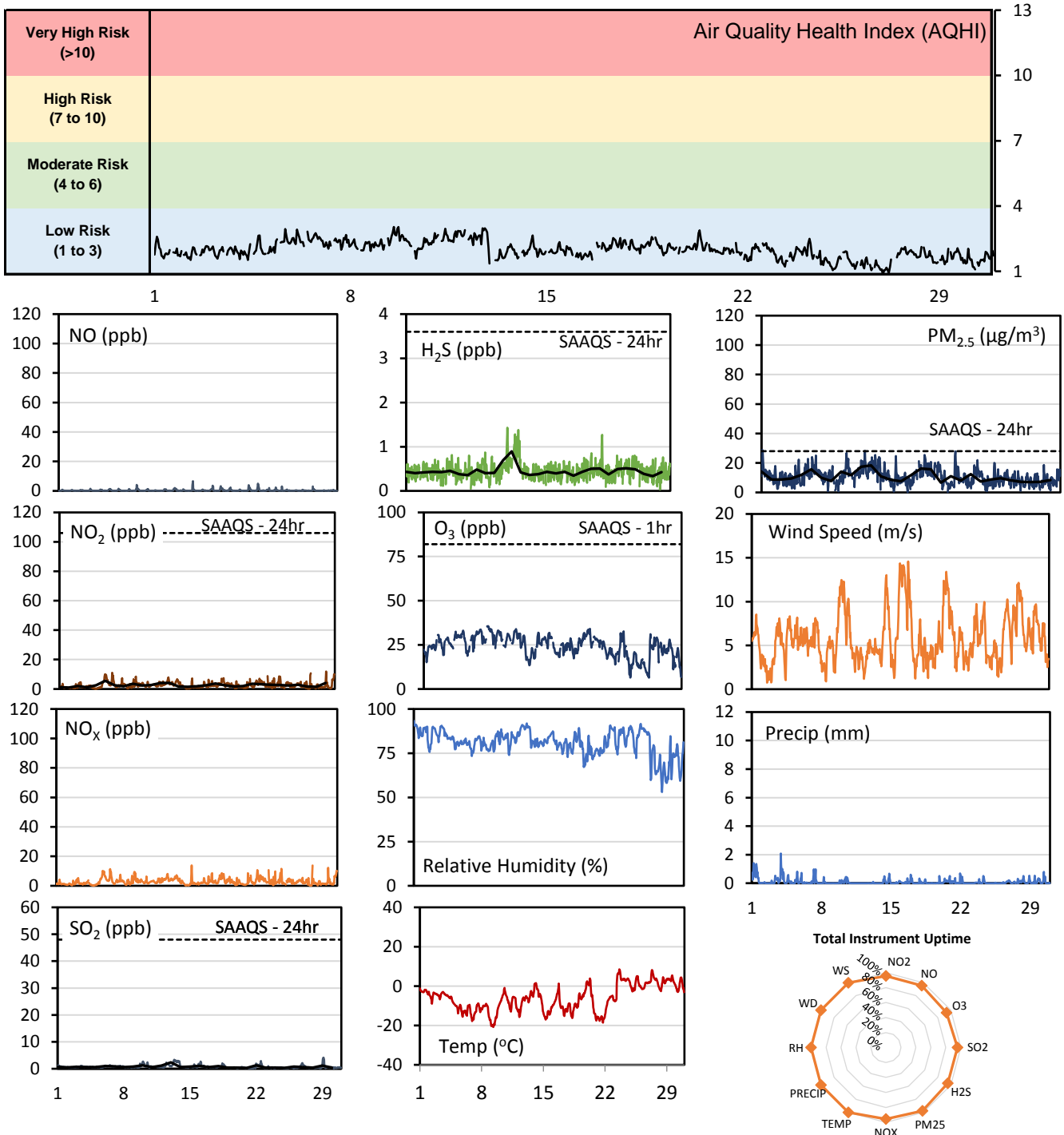


GPAZ Pense Station - November 2017 Summary Report

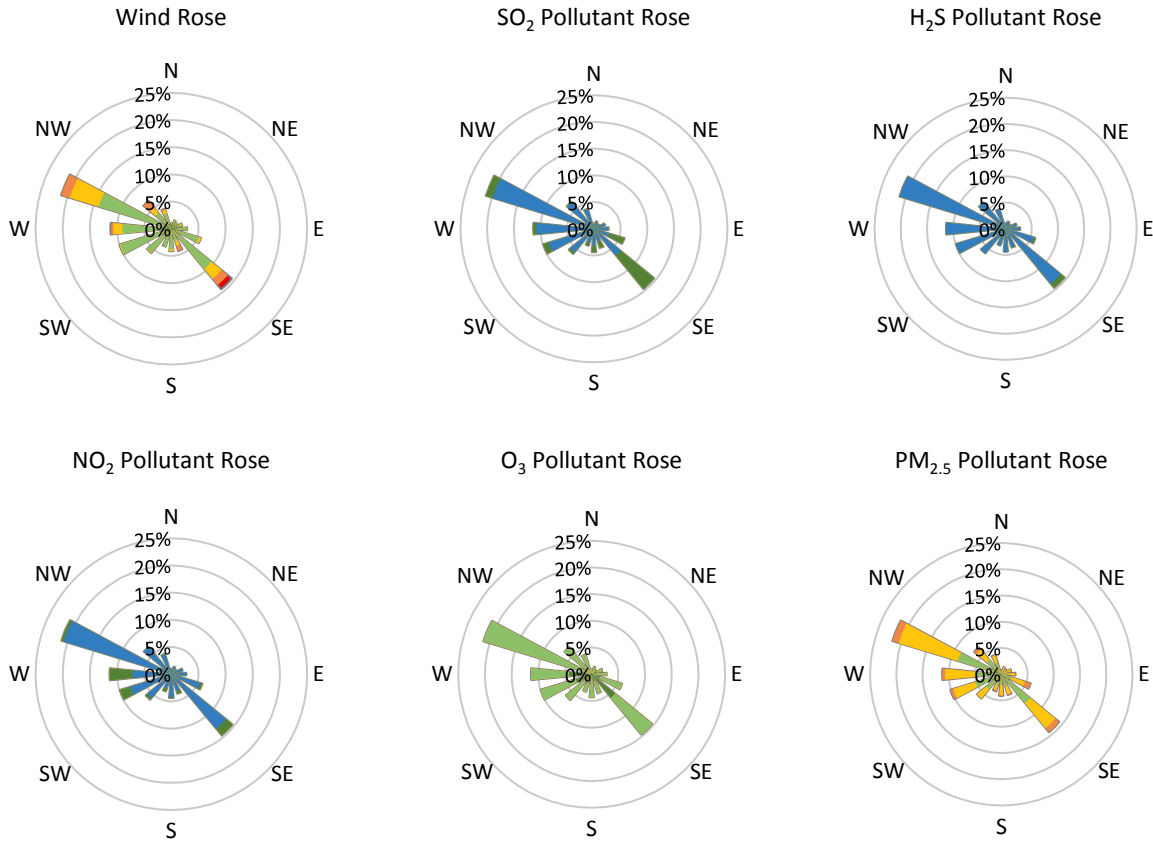
Pollutants		Month Records		24-Hour Records				1-Hour Records			
Name	Conc. Unit	Avg. Conc.	Total Uptime	Maximum		SAAQS Standard	Exceed Days	Maximum		SAAQS Standard	Exceed Hours
				Conc.	Time			Conc.	Time		
NO	ppb	0.4	96%	0.8	Nov-22	-	-	6.6	Nov-15 11:00	-	-
NO ₂	ppb	2.6	96%	5.6	Nov-06	106	0	11.9	Nov-30 01:00	159	0
NO _x	ppb	2.9	96%	6.0	Nov-06	-	-	13.9	Nov-15 11:00	-	-
SO ₂	ppb	0.8	96%	2.4	Nov-13	48	0	4.1	Nov-29 03:00	172	0
H ₂ S	ppb	0.4	96%	0.9	Nov-13	3.6	0	1.4	Nov-12 12:00	11	0
O ₃	ppb	24.3	93%	31.9	Nov-08	-	-	35.6	Nov-08 12:00	82	0
PM _{2.5}	µg/m ³	10.7	98%	18.3	Nov-12	28	0	28.9	Nov-01 02:00	-	-

SAAQS: Saskatchewan Ambient Air Quality Standards



* colored lines indicate 1-hr concentration data for all parameters; solid black lines indicate 24-hr concentrations for PM_{2.5}, NO₂, SO₂, and H₂S

GPAZ Pense Station - November 2017 Summary Report



Parameters	Unit	Color Code for Wind Speed and Pollution Concentration Class						
		0.3 ≤ WS < 1.4	1.4 ≤ WS < 3.1	3.1 ≤ WS < 7.8	7.8 ≤ WS < 10.8	10.8 ≤ WS < 13.6	WS ≥ 13.6	
SO ₂	ppb	0 ≤ C < 1	1 ≤ C < 5	5 ≤ C < 10	10 ≤ C < 57	57 ≤ C < 172	C ≥ 172	
NO ₂	ppb	0 ≤ C < 5	5 ≤ C < 15	15 ≤ C < 30	30 ≤ C < 100	100 ≤ C < 212	C ≥ 212	
H ₂ S	ppb	0 ≤ C < 1	1 ≤ C < 3.6	3.6 ≤ C < 5	5 ≤ C < 8	8 ≤ C < 10.8	C ≥ 10.8	
O ₃	ppb	0 ≤ C < 10	10 ≤ C < 20	20 ≤ C < 40	40 ≤ C < 60	60 ≤ C < 82	C ≥ 82	
PM _{2.5}	μg/m ³	0 ≤ C < 2	2 ≤ C < 4	4 ≤ C < 10	10 ≤ C < 20	20 ≤ C < 30	C ≥ 30	

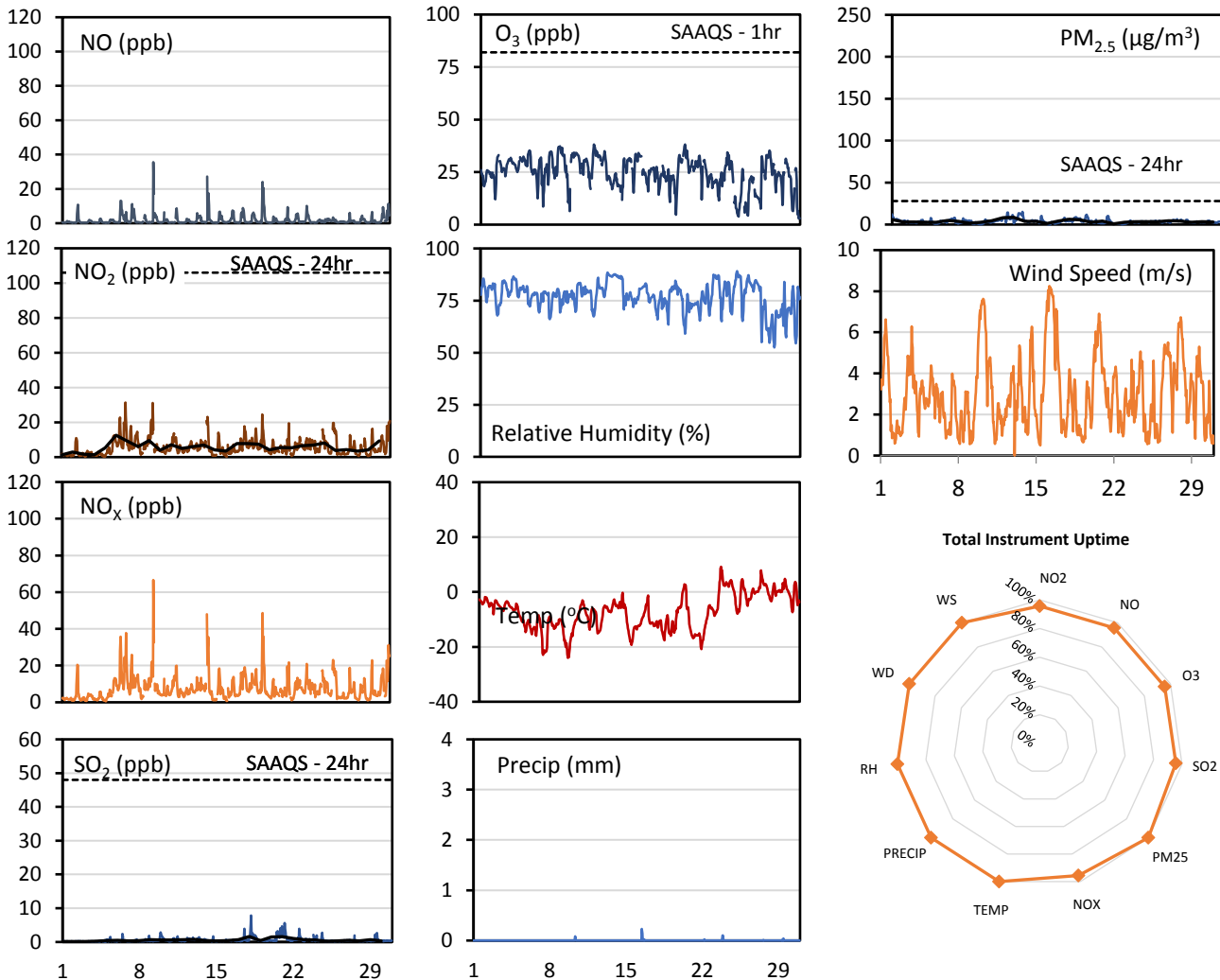
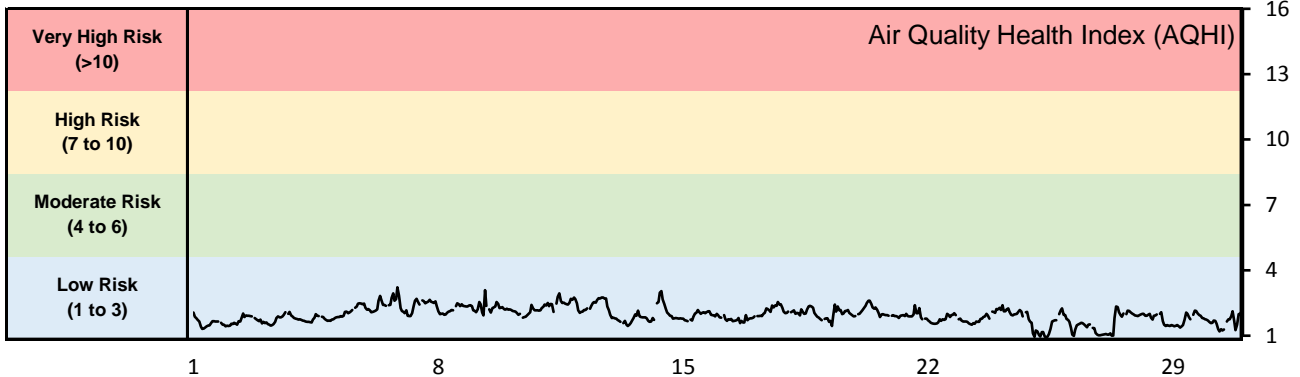
Monthly Update

- Achieved >96% of scheduled uptime for all parameters except O₃ (93%)
- Downtime of 4% due to routine daily internal zeroes and spans (7% for O₃)
- Calibration performed September 21

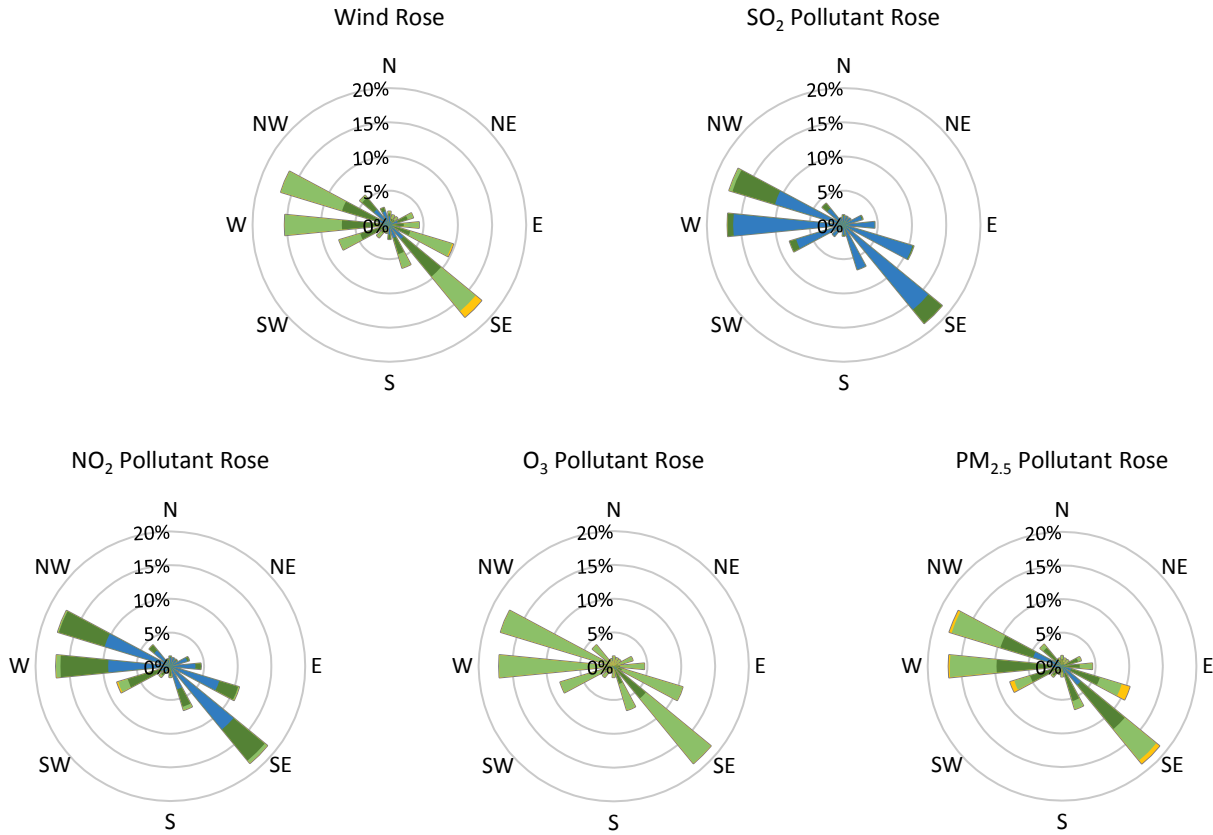
GPAZ East Regina Station - November 2017 Summary Report

Pollutants		Month Records		24-Hour Records				1-Hour Records			
Name	Conc. Unit	Avg. Conc.	Total Uptime	Maximum		SAAQS Standard	Exceed Days	Maximum		SAAQS Standard	Exceed Hours
				Conc.	Time			Conc.	Time		
NO	ppb	1.8	96%	4.5	Nov-19	-	-	35.6	Nov-09 08:00	-	-
NO ₂	ppb	5.7	96%	12.6	Nov-06	106	0	31.3	Nov-06 20:00	159	0
NO _x	ppb	7.5	96%	16.3	Nov-06	-	-	66.6	Nov-09 08:00	-	-
SO ₂	ppb	0.6	96%	1.6	Nov-18	48	0	7.8	Nov-18 04:00	172	0
O ₃	ppb	24.7	96%	31.8	Nov-08	-	-	38.2	Nov-11 15:00	82	0
PM _{2.5}	µg/m ³	3.8	100%	8.6	Nov-12	28	0	15.1	Nov-12 19:00	-	-

SAAQS: Saskatchewan Ambient Air Quality Standards



* colored lines indicate 1-hr concentration data for all parameters; solid black lines indicate 24-hr concentrations for PM_{2.5}, NO₂, and SO₂



Parameters	Unit	Color Code for Wind Speed and Pollution Concentration Class						
		$0.3 \leq WS < 1.4$	$1.4 \leq WS < 3.1$	$3.1 \leq WS < 7.8$	$7.8 \leq WS < 10.8$	$10.8 \leq WS < 13.6$	$WS \geq 13.6$	
SO ₂	ppb	$0 \leq C < 1$	$1 \leq C < 5$	$5 \leq C < 10$	$10 \leq C < 57$	$57 \leq C < 172$	$C \geq 172$	
NO ₂	ppb	$0 \leq C < 5$	$5 \leq C < 15$	$15 \leq C < 30$	$30 \leq C < 100$	$100 \leq C < 212$	$C \geq 212$	
O ₃	ppb	$0 \leq C < 10$	$10 \leq C < 20$	$20 \leq C < 40$	$40 \leq C < 60$	$60 \leq C < 82$	$C \geq 82$	
PM _{2.5}	$\mu\text{g}/\text{m}^3$	$0 \leq C < 2$	$2 \leq C < 4$	$4 \leq C < 10$	$10 \leq C < 20$	$20 \leq C < 30$	$C \geq 30$	

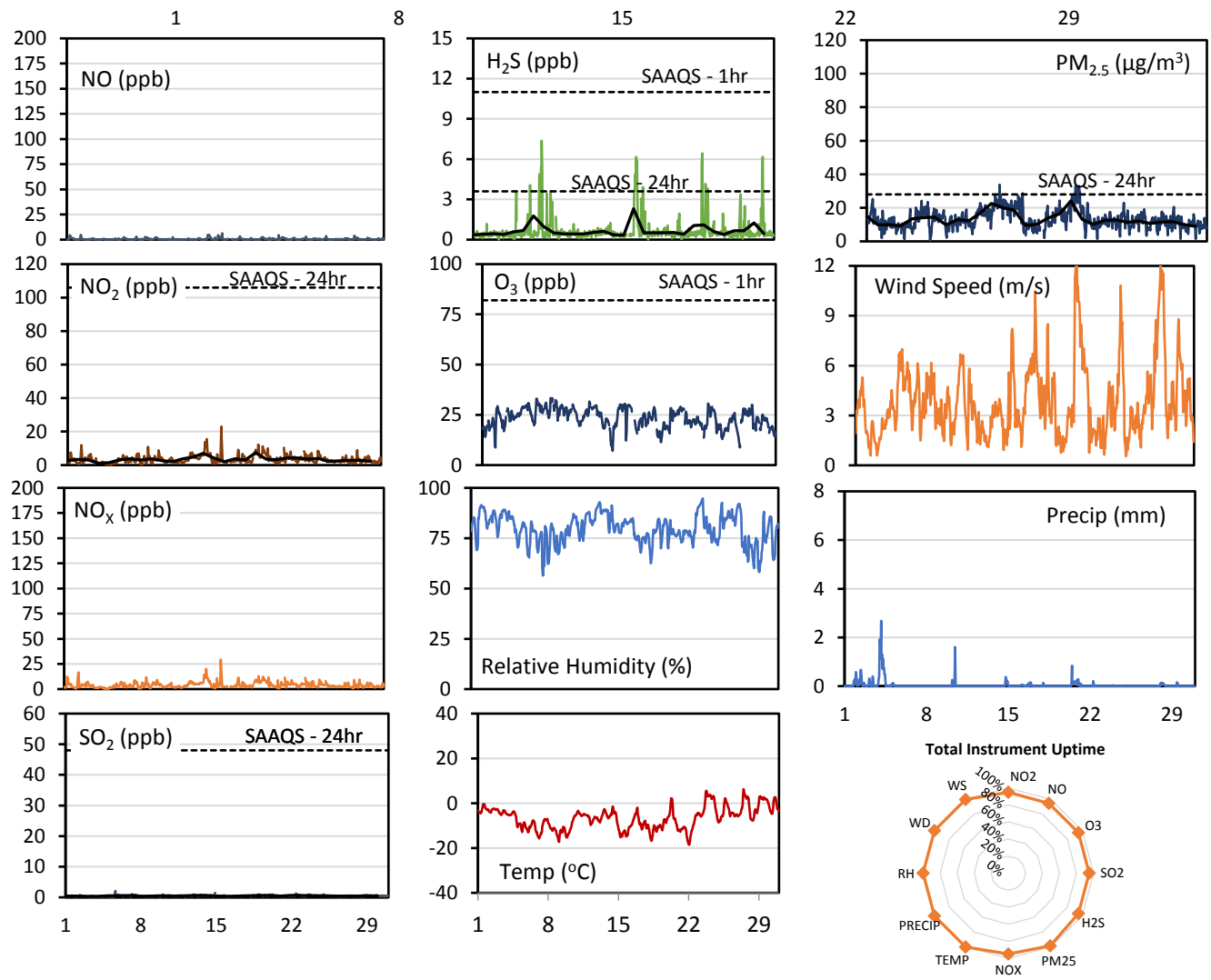
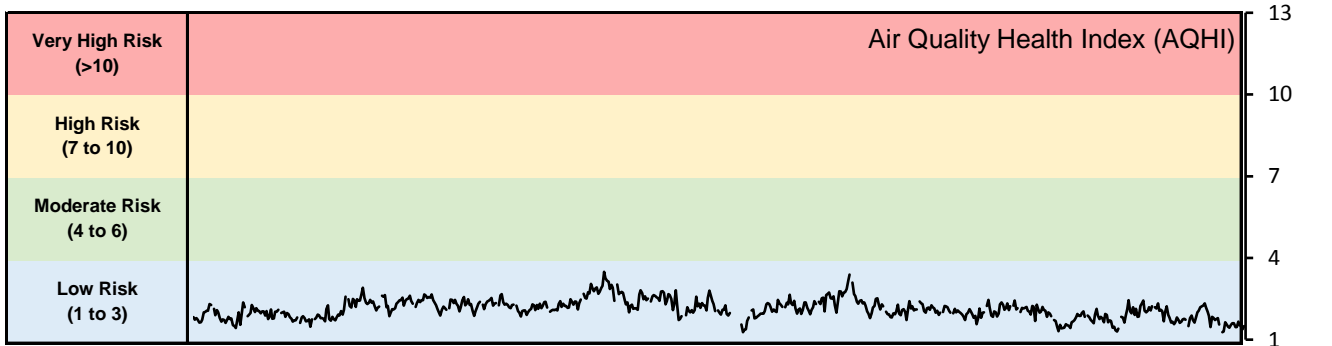
Monthly Update

- Achieved >96% of scheduled uptime for all parameters
- Downtime of 4% results from routine daily internal zeroes and spans

GPAZ Yorkton Station - November 2017 Summary Report

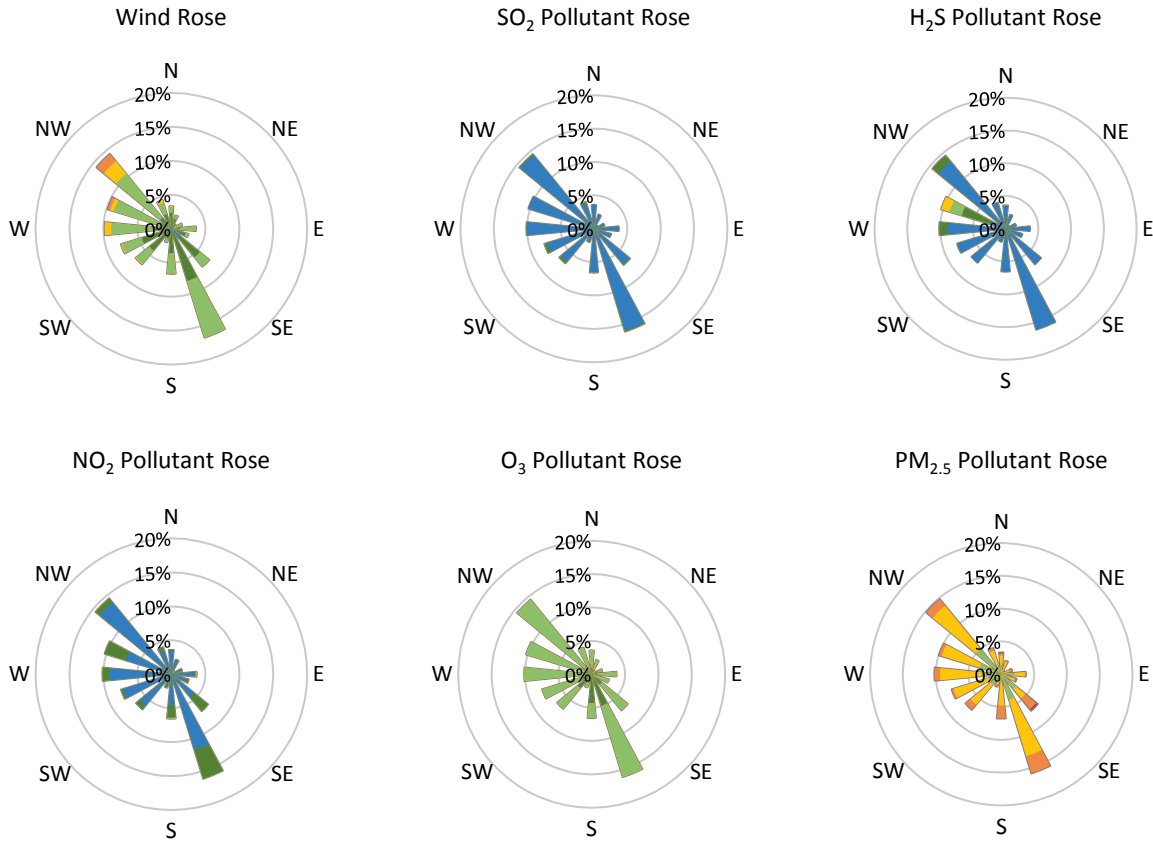
Pollutants		Month Records		24-Hour Records				1-Hour Records			
Name	Conc. Unit	Avg. Conc.	Total Uptime	Maximum		SAAQS Standard	Exceed Days	Maximum		SAAQS Standard	Exceed Hours
				Conc.	Time			Conc.	Time		
NO	ppb	0.6	95%	1.6	Nov-14	-	-	6.3	Nov-15 17:00	-	-
NO ₂	ppb	3.4	95%	7.4	Nov-19	106	0	23.0	Nov-15 17:00	159	0
NO _x	ppb	4.0	95%	8.7	Nov-14	-	-	29.3	Nov-15 17:00	-	-
SO ₂	ppb	0.5	95%	0.6	Nov-22	48	0	2.1	Nov-05 15:00	172	0
H ₂ S	ppb	0.7	95%	2.3	Nov-17	3.6	0	7.4	Nov-07 20:00	11	0
O ₃	ppb	23.3	95%	29.4	Nov-08	-	-	33.4	Nov-08 00:00	82	0
PM _{2.5}	µg/m ³	13.3	98%	24.1	Nov-19	28	0	33.8	Nov-12 17:00	-	-

SAAQS: Saskatchewan Ambient Air Quality Standards



* colored lines indicate 1-hr concentration data for all parameters; solid black lines indicate 24-hr concentrations for PM_{2.5}, NO₂, SO₂, and H₂S

GPAZ Yorkton Station - November 2017 Summary Report



Parameters	Unit	Color Code for Wind Speed and Pollution Concentration Class						
		0.3 ≤ WS < 1.4	1.4 ≤ WS < 3.1	3.1 ≤ WS < 7.8	7.8 ≤ WS < 10.8	10.8 ≤ WS < 13.6	WS ≥ 13.6	
SO ₂	ppb	0 ≤ C < 1	1 ≤ C < 5	5 ≤ C < 10	10 ≤ C < 57	57 ≤ C < 172	C ≥ 172	
NO ₂	ppb	0 ≤ C < 5	5 ≤ C < 15	15 ≤ C < 30	30 ≤ C < 100	100 ≤ C < 212	C ≥ 212	
H ₂ S	ppb	0 ≤ C < 1	1 ≤ C < 3.6	3.6 ≤ C < 5	5 ≤ C < 8	8 ≤ C < 10.8	C ≥ 10.8	
O ₃	ppb	0 ≤ C < 10	10 ≤ C < 20	20 ≤ C < 40	40 ≤ C < 60	60 ≤ C < 82	C ≥ 82	
PM _{2.5}	µg/m ³	0 ≤ C < 2	2 ≤ C < 4	4 ≤ C < 10	10 ≤ C < 20	20 ≤ C < 30	C ≥ 30	

Monthly Update

- Achieved > 95% of scheduled uptime for all parameters
- Downtime of 4% due to routine daily internal zeroes and spans