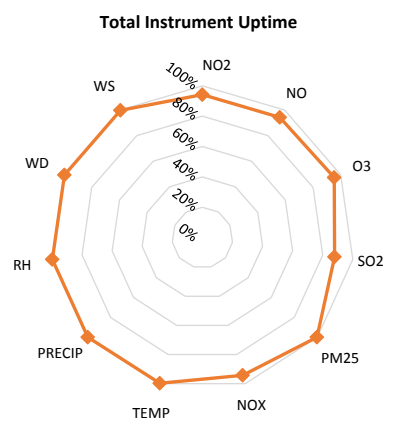
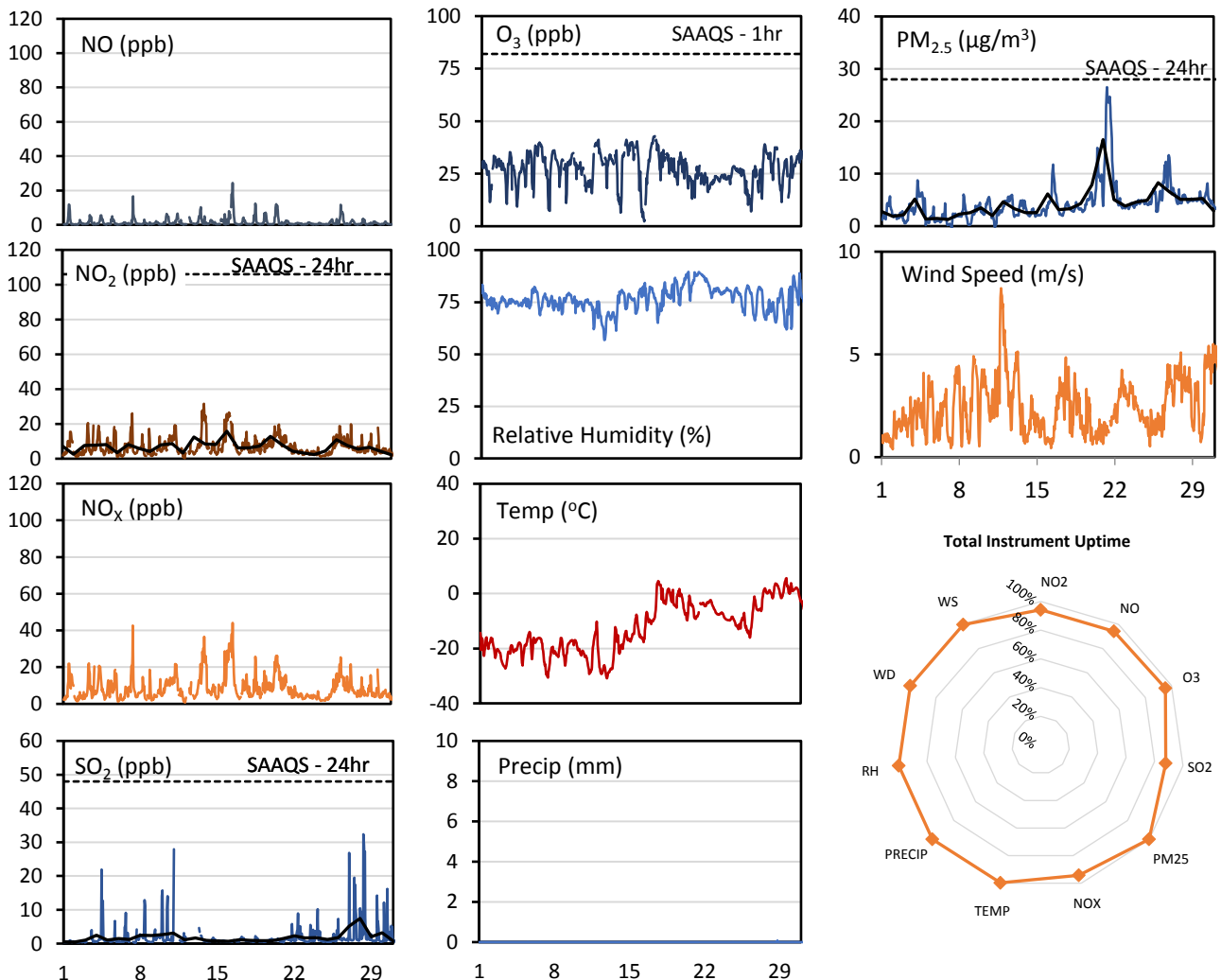
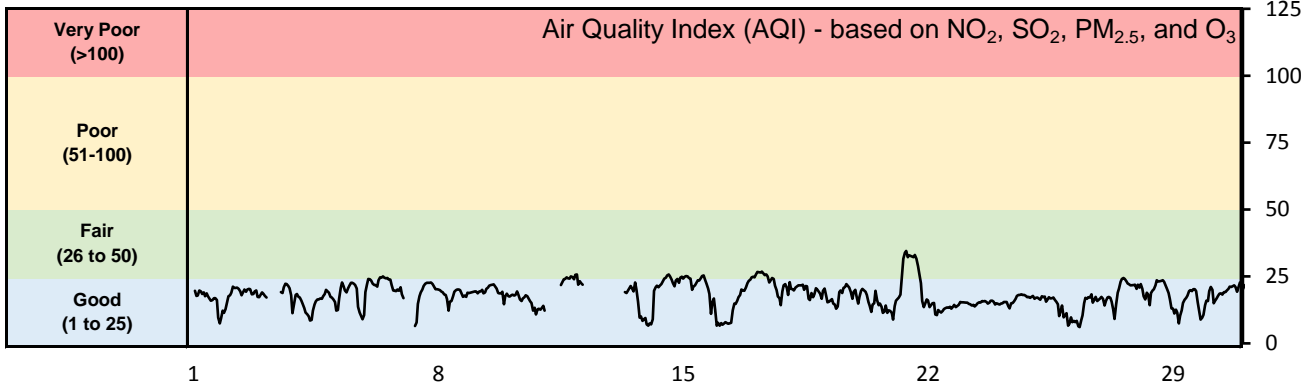


## GPAZ East Regina Station - January 2017 Summary Report

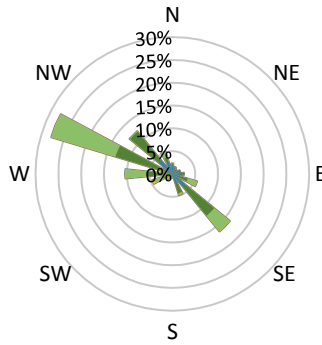
Pollutants		Month Records		24-Hour Records				1-Hour Records			
Name	Conc. Unit	Avg. Conc.	Uptime	Maximum		SAAQS Standard	Exceed Days	Maximum		SAAQS Standard	Exceed Hours
				Conc.	Time			Conc.	Time		
NO	ppb	1.5	94%	5.8	Jan-16	-	-	24.4	Jan-16 12:00	-	-
NO <sub>2</sub>	ppb	6.9	94%	15.8	Jan-16	106	0	31.6	Jan-13 22:00	159	0
NO <sub>x</sub>	ppb	8.4	94%	21.6	Jan-16	-	-	44.1	Jan-16 12:00	-	-
SO <sub>2</sub>	ppb	1.8	88%	7.5	Jan-28	48	0	32.4	Jan-28 07:00	172	0
O <sub>3</sub>	ppb	27.4	95%	36.4	Jan-17	-	-	42.9	Jan-17 06:00	82	0
PM <sub>2.5</sub>	µg/m <sup>3</sup>	4.2	100%	16.5	Jan-21	28	0	26.5	Jan-21 09:00	-	-

SAAQS: Saskatchewan Ambient Air Quality Standards

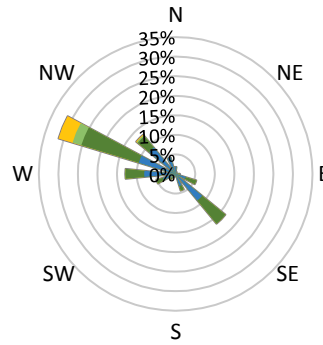


\* colored lines indicate 1-hr concentration data for all parameters; solid black lines indicate 24-hr concentrations for PM<sub>2.5</sub>, NO<sub>2</sub>, and SO<sub>2</sub>

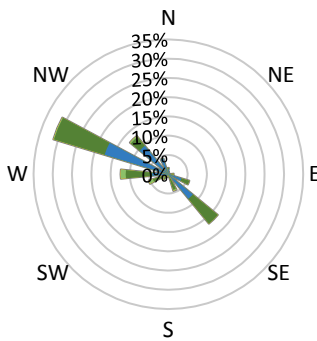
Wind Rose



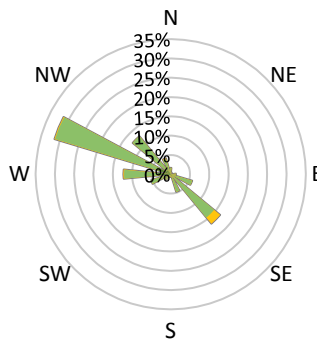
SO<sub>2</sub> Pollutant Rose



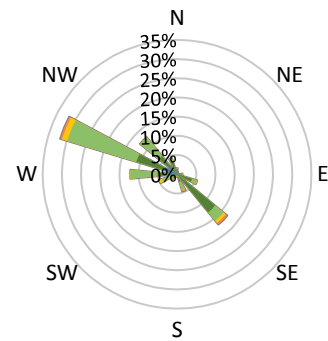
NO<sub>2</sub> Pollutant Rose



O<sub>3</sub> Pollutant Rose



PM<sub>2.5</sub> Pollutant Rose



Parameters	Unit	Color Code for Wind Speed and Pollution Concentration Class						
		0.3 ≤ WS < 1.4	1.4 ≤ WS < 3.1	3.1 ≤ WS < 7.8	7.8 ≤ WS < 10.8	10.8 ≤ WS < 13.6	WS ≥ 13.6	
SO <sub>2</sub>	ppb	0 ≤ C < 1	1 ≤ C < 5	5 ≤ C < 10	10 ≤ C < 57	57 ≤ C < 172	C ≥ 172	
NO <sub>2</sub>	ppb	0 ≤ C < 5	5 ≤ C < 15	15 ≤ C < 30	30 ≤ C < 100	100 ≤ C < 212	C ≥ 212	
O <sub>3</sub>	ppb	0 ≤ C < 10	10 ≤ C < 20	20 ≤ C < 40	40 ≤ C < 60	60 ≤ C < 82	C ≥ 82	
PM <sub>2.5</sub>	µg/m <sup>3</sup>	0 ≤ C < 2	2 ≤ C < 4	4 ≤ C < 10	10 ≤ C < 20	20 ≤ C < 30	C ≥ 30	

Monthly Update

- Achieved >98% of scheduled uptime for all parameters except SO<sub>2</sub> (91.9%)
- All parameters achieved >94% of total uptime except SO<sub>2</sub> (88%)
- No maintenance performed in January
- SO<sub>2</sub> downtime due to operational issues