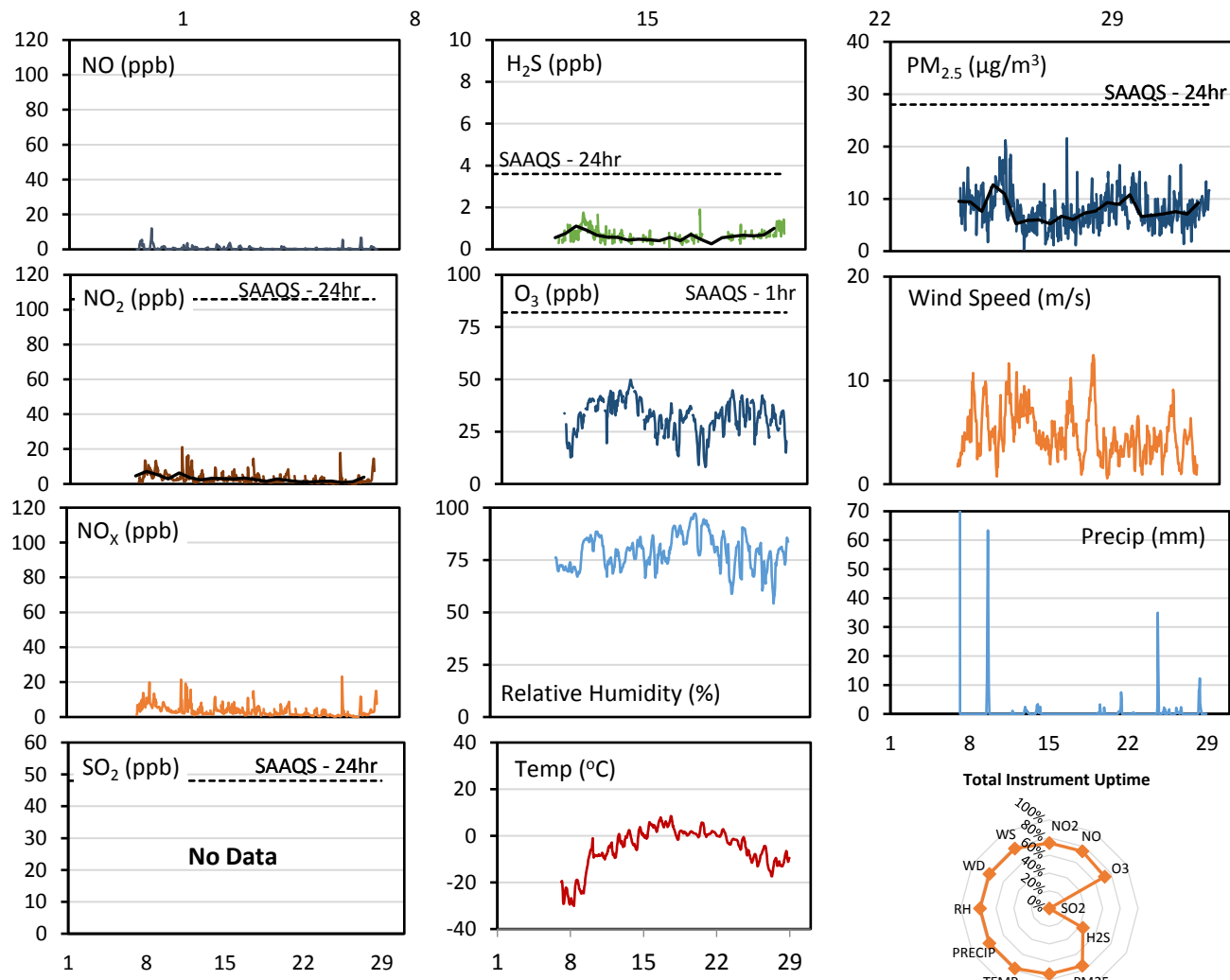


GPAZ Pense Station - February 2017 Summary Report

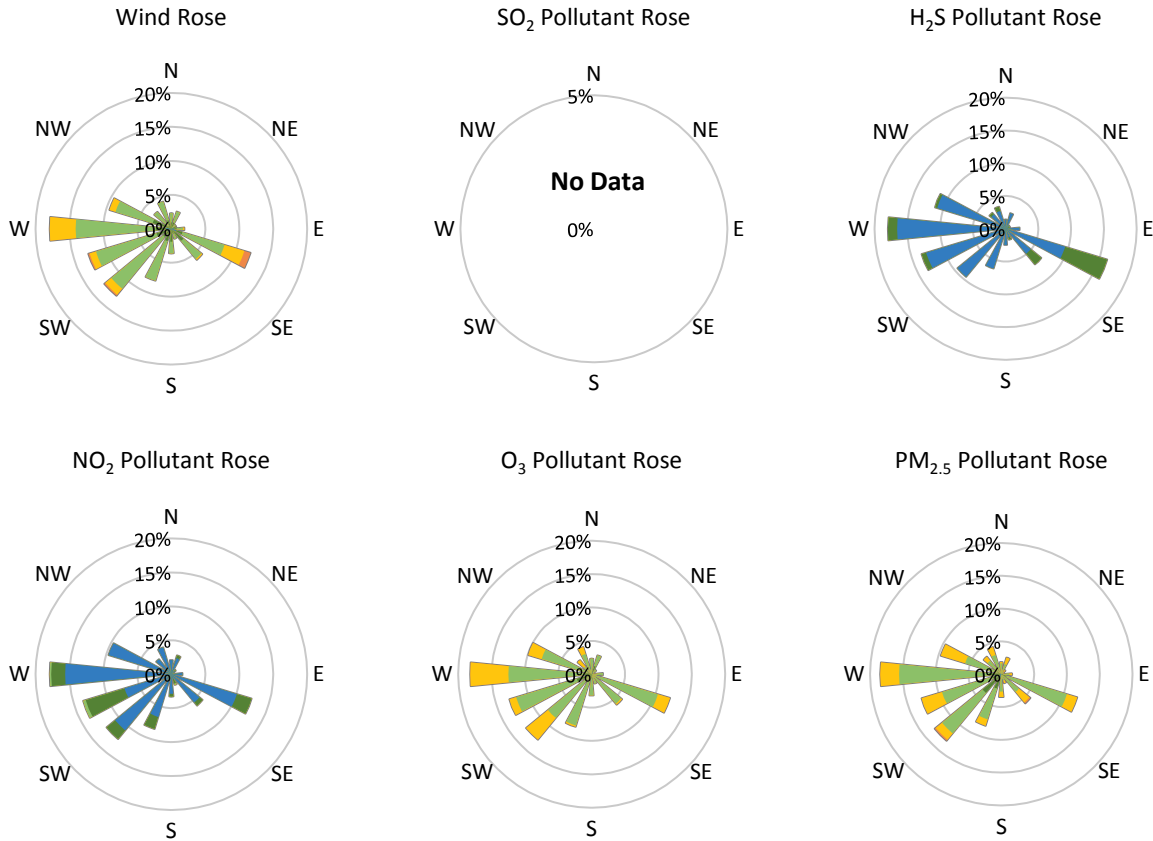
Pollutants		Month Records		24-Hour Records				1-Hour Records			
Name	Conc. Unit	Avg. Conc.	Uptime	Maximum		SAAQS Standard	Exceed Days	Maximum		SAAQS Standard	Exceed Hours
				Conc.	Time			Conc.	Time		
NO	ppb	0.6	75%	1.9	Feb-08	-	-	12.0	Feb-08 11:00	-	-
NO ₂	ppb	3.0	74%	7.2	Feb-08	106	0	21.1	Feb-11 07:00	159	0
NO _x	ppb	3.5	74%	9.1	Feb-08	-	-	23.2	Feb-25 20:00	-	-
SO ₂	ppb	No Data	No Data	No Data	No Data	48	No Data	No Data	No Data	172	No Data
H ₂ S	ppb	0.7	44%	1.1	Feb-09	3.6	0	1.9	Feb-20 21:00	11	
O ₃	ppb	32.2	72%	44.6	Feb-13	-	-	49.7	Feb-13 15:00	82	0
PM _{2.5}	µg/m ³	7.9	74%	12.7	Feb-10	28	0	21.6	Feb-16 11:00	-	-

SAAQS: Saskatchewan Ambient Air Quality Standards



* colored lines indicate 1-hr concentration data for all parameters; solid black lines indicate 24-hr concentrations for PM_{2.5}, NO₂, SO₂, and H₂S

GPAZ Pense Station - February 2017 Summary Report



Parameters	Unit	Color Code for Wind Speed and Pollution Concentration Class						
		0.3 ≤ WS < 1.4	1.4 ≤ WS < 3.1	3.1 ≤ WS < 7.8	7.8 ≤ WS < 10.8	10.8 ≤ WS < 13.6	WS ≥ 13.6	
SO ₂	ppb	0 ≤ C < 1	1 ≤ C < 5	5 ≤ C < 10	10 ≤ C < 57	57 ≤ C < 172	C ≥ 172	
NO ₂	ppb	0 ≤ C < 5	5 ≤ C < 15	15 ≤ C < 30	30 ≤ C < 100	100 ≤ C < 212	C ≥ 212	
H ₂ S	ppb	0 ≤ C < 1	1 ≤ C < 3.6	3.6 ≤ C < 5	5 ≤ C < 8	8 ≤ C < 10.8	C ≥ 10.8	
O ₃	ppb	0 ≤ C < 10	10 ≤ C < 20	20 ≤ C < 40	40 ≤ C < 60	60 ≤ C < 82	C ≥ 82	
PM _{2.5}	µg/m ³	0 ≤ C < 2	2 ≤ C < 4	4 ≤ C < 10	10 ≤ C < 20	20 ≤ C < 30	C ≥ 30	

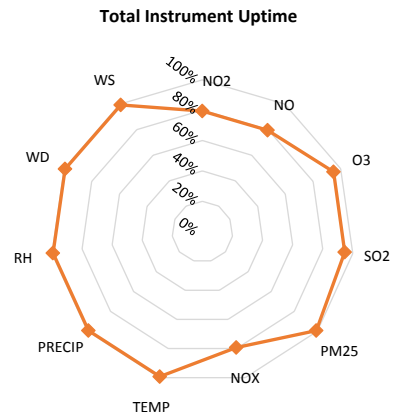
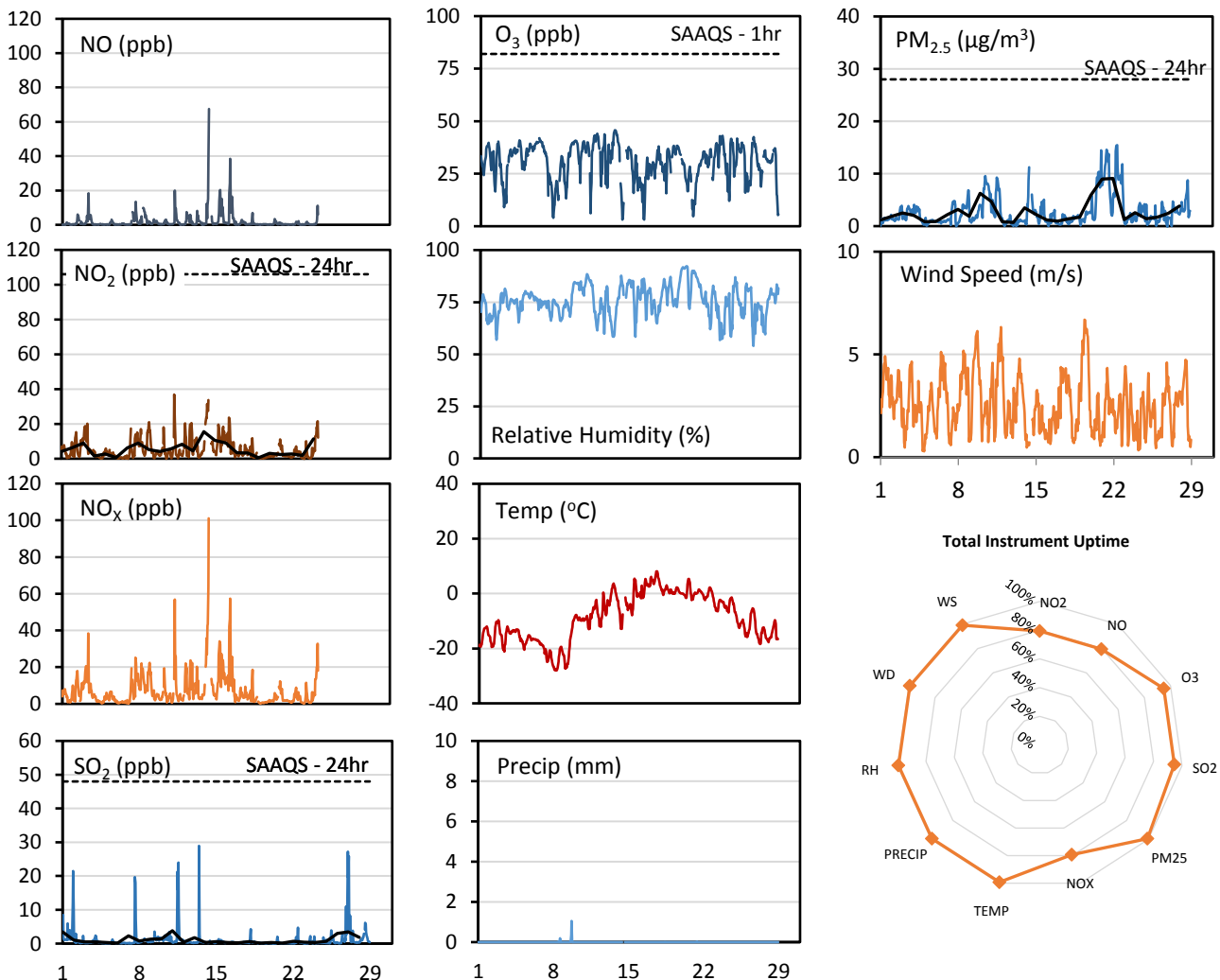
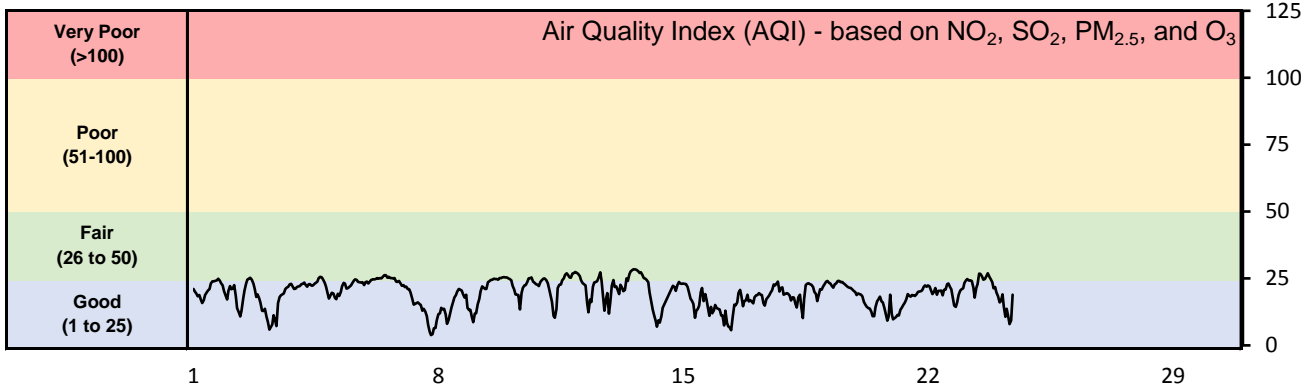
Monthly Update

- Pense monitoring station installed February 3. Data unavailable prior to February 7 as station underwent commissioning

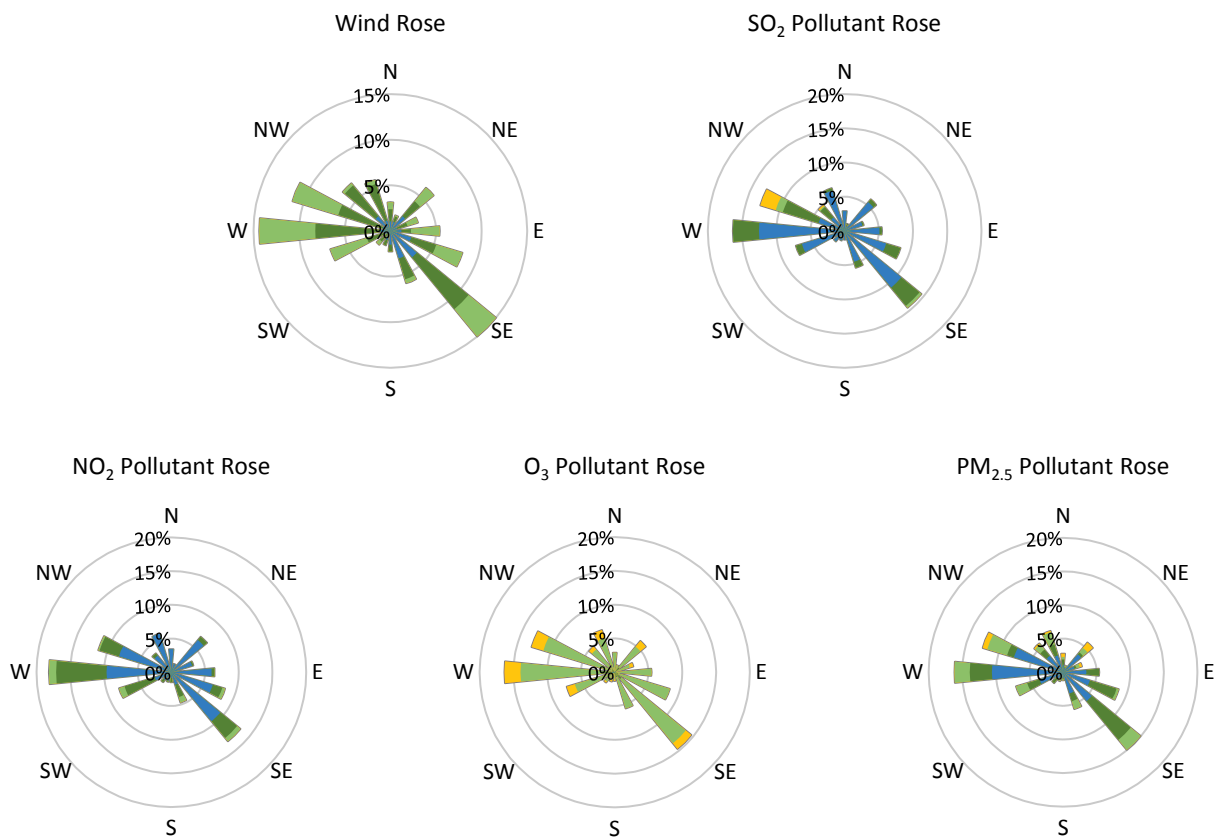
GPAZ East Regina Station - February 2017 Summary Report

Pollutants		Month Records		24-Hour Records				1-Hour Records			
Name	Conc. Unit	Avg. Conc.	Uptime	Maximum		SAAQS Standard	Exceed Days	Maximum		SAAQS Standard	Exceed Hours
				Conc.	Time			Conc.	Time		
NO	ppb	2.0	79%	8.8	Feb-14	-	-	67.5	Feb-14 10:00	-	-
NO ₂	ppb	5.2	79%	15.5	Feb-14	106	0	36.9	Feb-11 07:00	159	0
NO _x	ppb	7.2	79%	24.4	Feb-14	-	-	101.1	Feb-14 10:00	-	-
SO ₂	ppb	1.1	95%	3.8	Feb-11	48	0	28.9	Feb-13 10:00	172	0
O ₃	ppb	30.4	95%	39.7	Feb-13	-	-	45.7	Feb-13 14:00	82	0
PM _{2.5}	µg/m ³	2.8	99%	9.1	Feb-22	28	0	15.5	Feb-22 09:00	-	-

SAAQS: Saskatchewan Ambient Air Quality Standards



* colored lines indicate 1-hr concentration data for all parameters; solid black lines indicate 24-hr concentrations for PM_{2.5}, NO₂, and SO₂



Parameters	Unit	Color Code for Wind Speed and Pollution Concentration Class						
		$0.3 \leq WS < 1.4$	$1.4 \leq WS < 3.1$	$3.1 \leq WS < 7.8$	$7.8 \leq WS < 10.8$	$10.8 \leq WS < 13.6$	$WS \geq 13.6$	
SO ₂	ppb	$0 \leq C < 1$	$1 \leq C < 5$	$5 \leq C < 10$	$10 \leq C < 57$	$57 \leq C < 172$	$C \geq 172$	
NO ₂	ppb	$0 \leq C < 5$	$5 \leq C < 15$	$15 \leq C < 30$	$30 \leq C < 100$	$100 \leq C < 212$	$C \geq 212$	
O ₃	ppb	$0 \leq C < 10$	$10 \leq C < 20$	$20 \leq C < 40$	$40 \leq C < 60$	$60 \leq C < 82$	$C \geq 82$	
PM _{2.5}	$\mu\text{g}/\text{m}^3$	$0 \leq C < 2$	$2 \leq C < 4$	$4 \leq C < 10$	$10 \leq C < 20$	$20 \leq C < 30$	$C \geq 30$	

Monthly Update

- Achieved >98% of scheduled uptime for all parameters except NO/NO₂/NO_x (83.2%)
- All parameters achieved >95% of total uptime except NO/NO₂/NO_x (79%)
- NO/NO₂/NO_x downtime due to operational issues