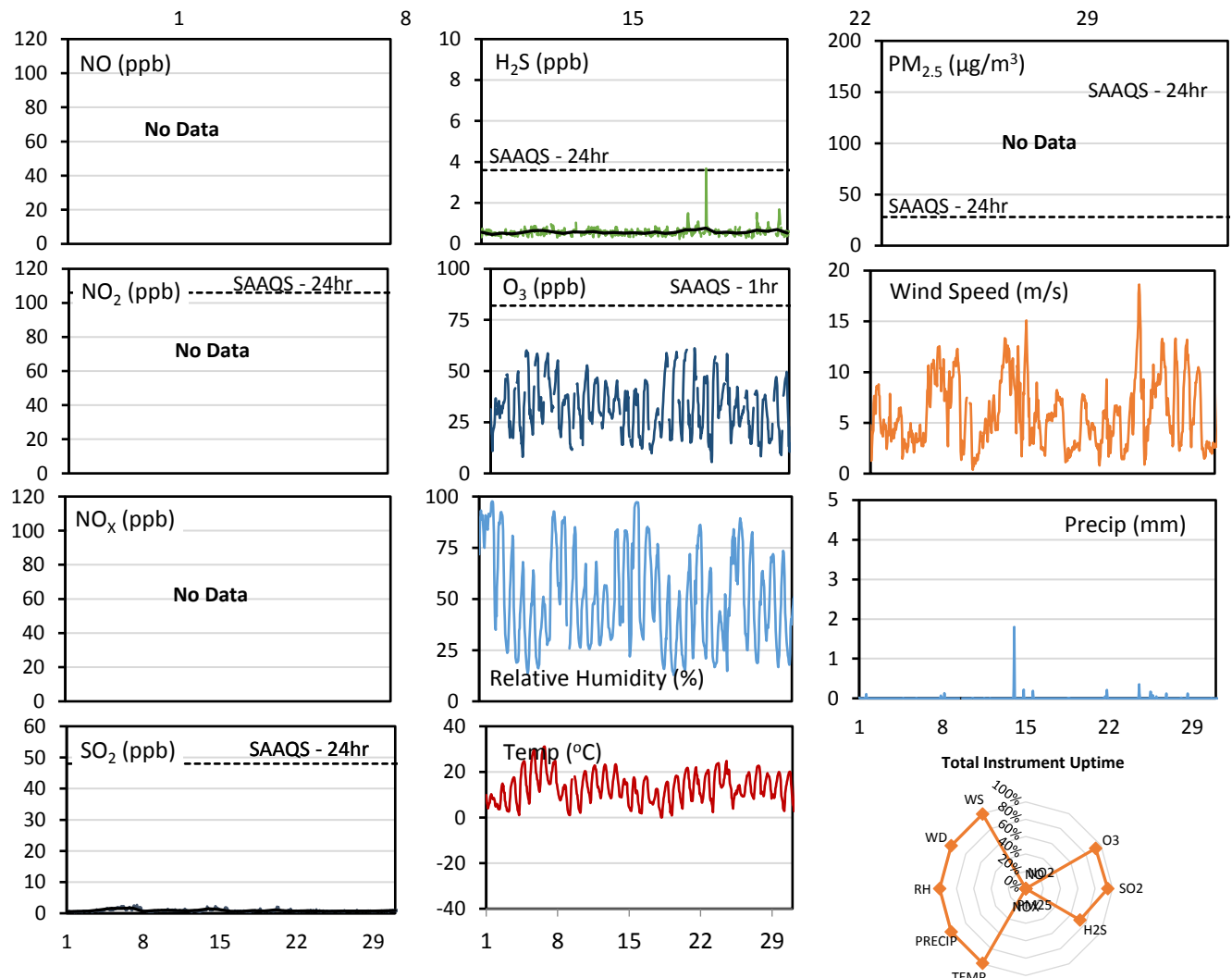
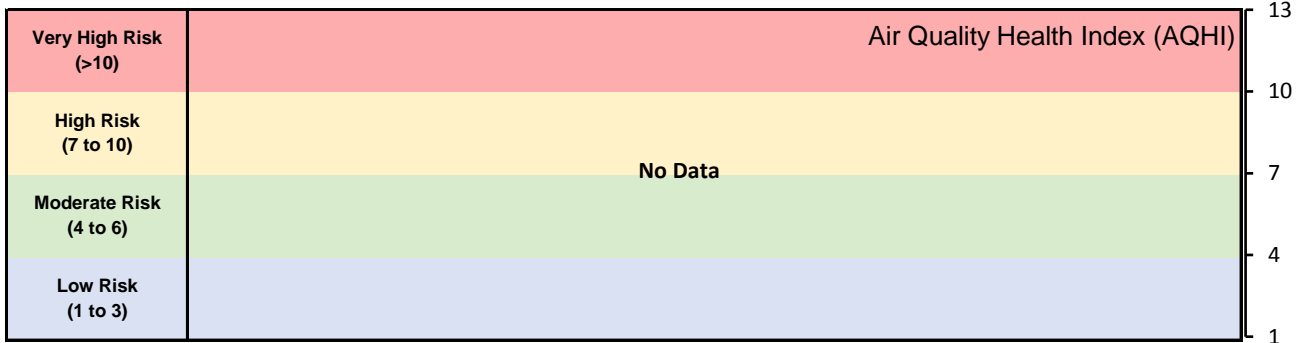


## GPAZ Pense Station - May 2017 Summary Report

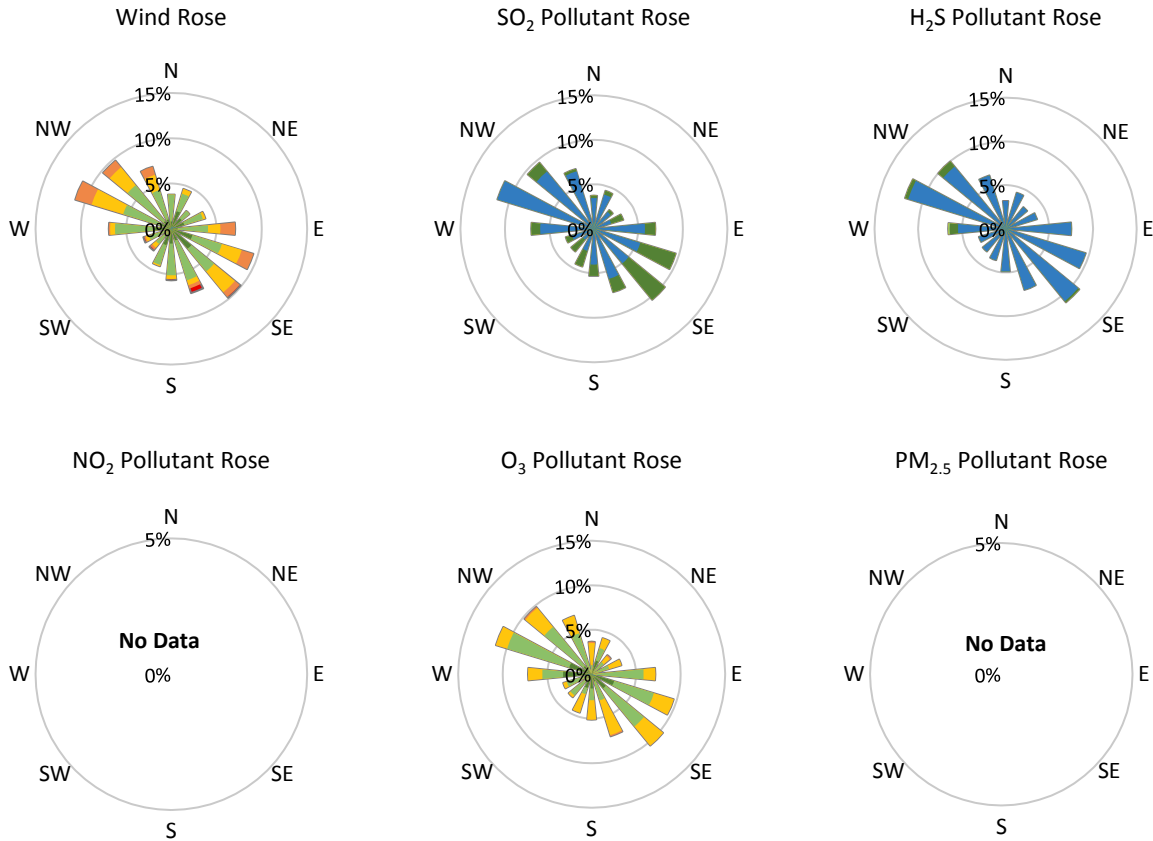
Pollutants		Month Records		24-Hour Records				1-Hour Records			
Name	Conc. Unit	Avg. Conc.	Uptime	Maximum		SAAQS Standard	Exceed Days	Maximum		SAAQS Standard	Exceed Hours
				Conc.	Time			Conc.	Time		
NO	ppb	No Data	0%	0.0	No Data	-	-	0.0	No Data	-	-
NO <sub>2</sub>	ppb	No Data	0%	0.0	No Data	106	0	0.0	No Data	159	0
NO <sub>x</sub>	ppb	No Data	0%	0.0	No Data	-	-	0.0	No Data	-	-
SO <sub>2</sub>	ppb	0.9	94%	1.7	May-07	48	0	2.7	May-07 10:00	172	0
H <sub>2</sub> S	ppb	0.6	72%	0.8	May-23	3.6	0	3.7	May-23 01:00	11	0
O <sub>3</sub>	ppb	32.8	93%	43.0	May-06	-	-	61.2	May-21 12:00	82	0
PM <sub>2.5</sub>	µg/m <sup>3</sup>	No Data	No Data	No Data	No Data	28	No Data	No Data	No Data	-	No Data

SAAQS: Saskatchewan Ambient Air Quality Standards



\* colored lines indicate 1-hr concentration data for all parameters; solid black lines indicate 24-hr concentrations for PM<sub>2.5</sub>, NO<sub>2</sub>, SO<sub>2</sub>, and H<sub>2</sub>S

**GPAZ Pense Station - May 2017 Summary Report**



Parameters	Unit	Color Code for Wind Speed and Pollution Concentration Class					
		0.3 ≤ WS < 1.4	1.4 ≤ WS < 3.1	3.1 ≤ WS < 7.8	7.8 ≤ WS < 10.8	10.8 ≤ WS < 13.6	WS ≥ 13.6
SO <sub>2</sub>	ppb	0 ≤ C < 1	1 ≤ C < 5	5 ≤ C < 10	10 ≤ C < 57	57 ≤ C < 172	C ≥ 172
NO <sub>2</sub>	ppb	0 ≤ C < 5	5 ≤ C < 15	15 ≤ C < 30	30 ≤ C < 100	100 ≤ C < 212	C ≥ 212
H <sub>2</sub> S	ppb	0 ≤ C < 1	1 ≤ C < 3.6	3.6 ≤ C < 5	5 ≤ C < 8	8 ≤ C < 10.8	C ≥ 10.8
O <sub>3</sub>	ppb	0 ≤ C < 10	10 ≤ C < 20	20 ≤ C < 40	40 ≤ C < 60	60 ≤ C < 82	C ≥ 82
PM <sub>2.5</sub>	µg/m <sup>3</sup>	0 ≤ C < 2	2 ≤ C < 4	4 ≤ C < 10	10 ≤ C < 20	20 ≤ C < 30	C ≥ 30

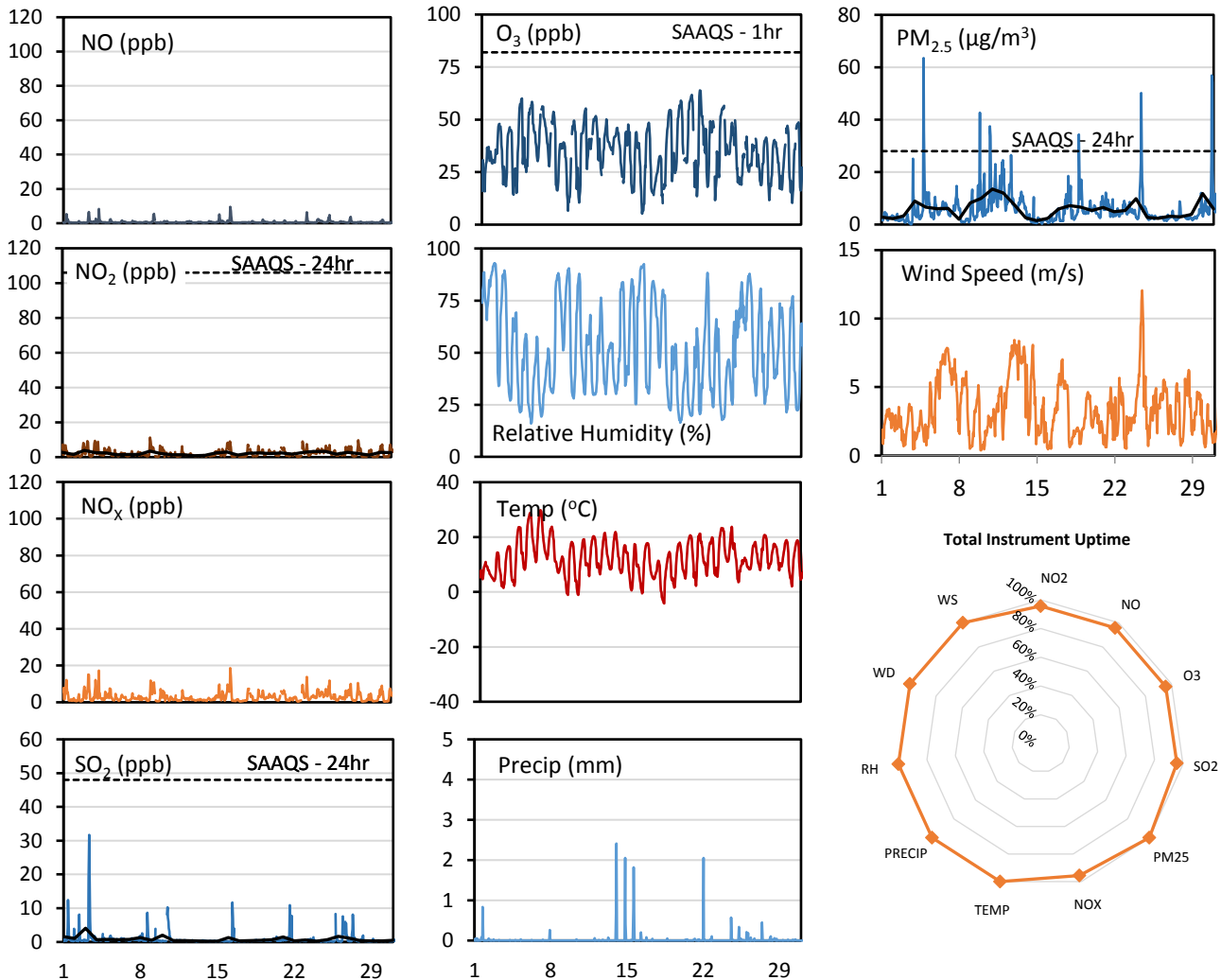
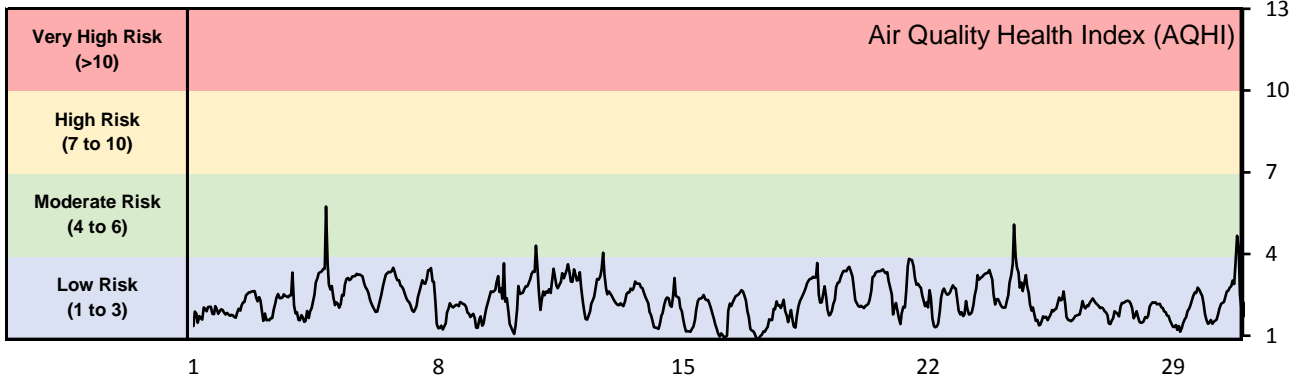
**Monthly Update**

- Achieved >95% of scheduled uptime for SO<sub>2</sub> and O<sub>3</sub>, and 75.6% for H<sub>2</sub>S
- Achieved >93% of total uptime for SO<sub>2</sub> and O<sub>3</sub>, and 72% for H<sub>2</sub>S
- Downtime of 4% due to routine daily Internal Zeroes and Spans
- Downtime for all other parameters due to operational issues

## GPAZ East Regina Station - May 2017 Summary Report

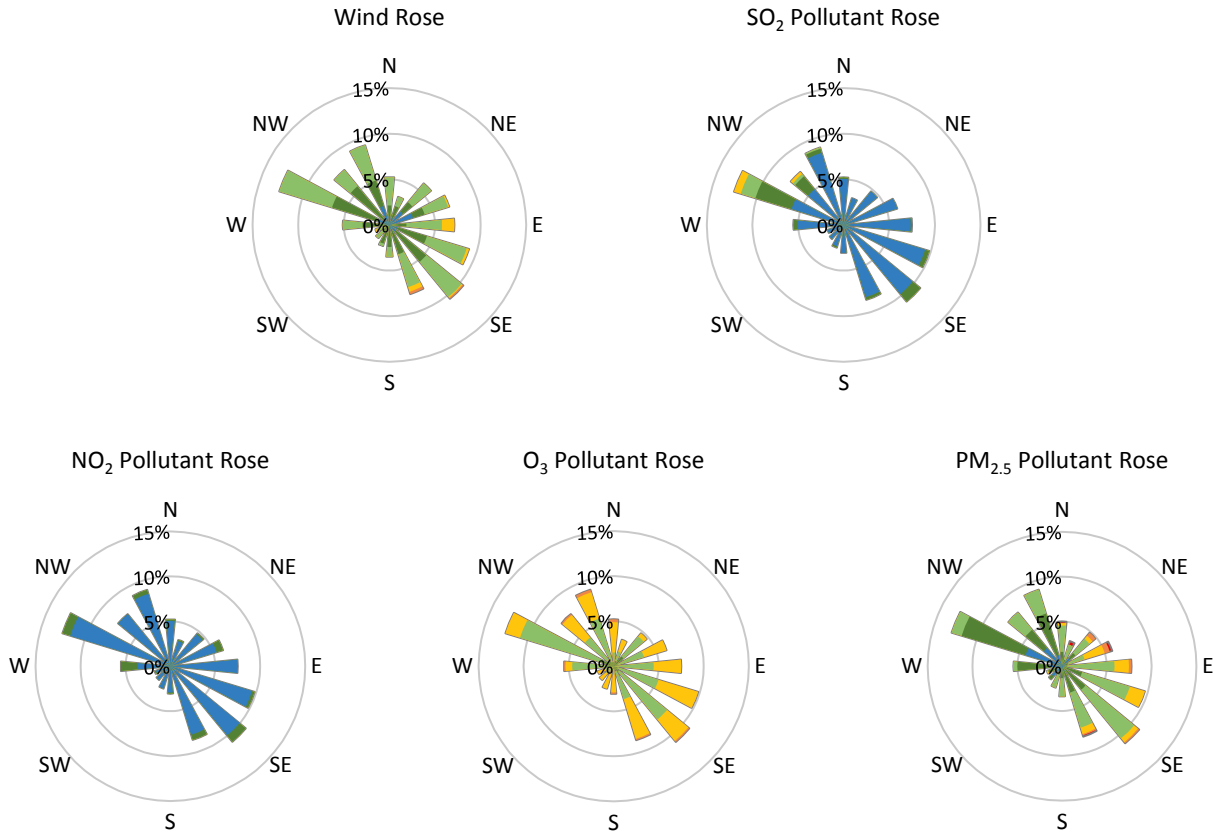
Pollutants		Month Records		24-Hour Records				1-Hour Records			
Name	Conc. Unit	Avg. Conc.	Uptime	Maximum		SAAQS Standard	Exceed Days	Maximum		SAAQS Standard	Exceed Hours
				Conc.	Time			Conc.	Time		
NO	ppb	0.7	96%	1.6	May-16	-	-	9.5	May-16 07:00	-	-
NO <sub>2</sub>	ppb	2.2	96%	3.9	May-03	106	0	11.2	May-09 00:00	159	0
NO <sub>x</sub>	ppb	2.9	96%	5.2	May-03	-	-	18.6	May-16 07:00	-	-
SO <sub>2</sub>	ppb	0.8	96%	4.1	May-03	48	0	31.7	May-03 08:00	172	0
O <sub>3</sub>	ppb	35.3	96%	45.0	May-20	-	-	63.9	May-21 12:00	82	0
PM <sub>2.5</sub>	µg/m <sup>3</sup>	5.8	100%	13.5	May-11	28	0	63.5	May-04 19:00	-	-

SAAQS: Saskatchewan Ambient Air Quality Standards



\* colored lines indicate 1-hr concentration data for all parameters; solid black lines indicate 24-hr concentrations for PM<sub>2.5</sub>, NO<sub>2</sub>, and SO<sub>2</sub>

**GPAZ East Regina Station - May 2017 Summary Report**



Parameters	Unit	Color Code for Wind Speed and Pollution Concentration Class						
		$0.3 \leq WS < 1.4$	$1.4 \leq WS < 3.1$	$3.1 \leq WS < 7.8$	$7.8 \leq WS < 10.8$	$10.8 \leq WS < 13.6$	$WS \geq 13.6$	
SO <sub>2</sub>	ppb	$0 \leq C < 1$	$1 \leq C < 5$	$5 \leq C < 10$	$10 \leq C < 57$	$57 \leq C < 172$	$C \geq 172$	
NO <sub>2</sub>	ppb	$0 \leq C < 5$	$5 \leq C < 15$	$15 \leq C < 30$	$30 \leq C < 100$	$100 \leq C < 212$	$C \geq 212$	
O <sub>3</sub>	ppb	$0 \leq C < 10$	$10 \leq C < 20$	$20 \leq C < 40$	$40 \leq C < 60$	$60 \leq C < 82$	$C \geq 82$	
PM <sub>2.5</sub>	$\mu\text{g}/\text{m}^3$	$0 \leq C < 2$	$2 \leq C < 4$	$4 \leq C < 10$	$10 \leq C < 20$	$20 \leq C < 30$	$C \geq 30$	

**Monthly Update**

- Achieved 100% of scheduled uptime for all parameters
- All parameters achieved >96% of total uptime
- Downtime of 4% due to routine daily Internal Zeroes and Spans