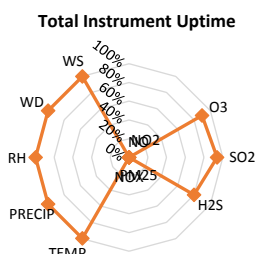
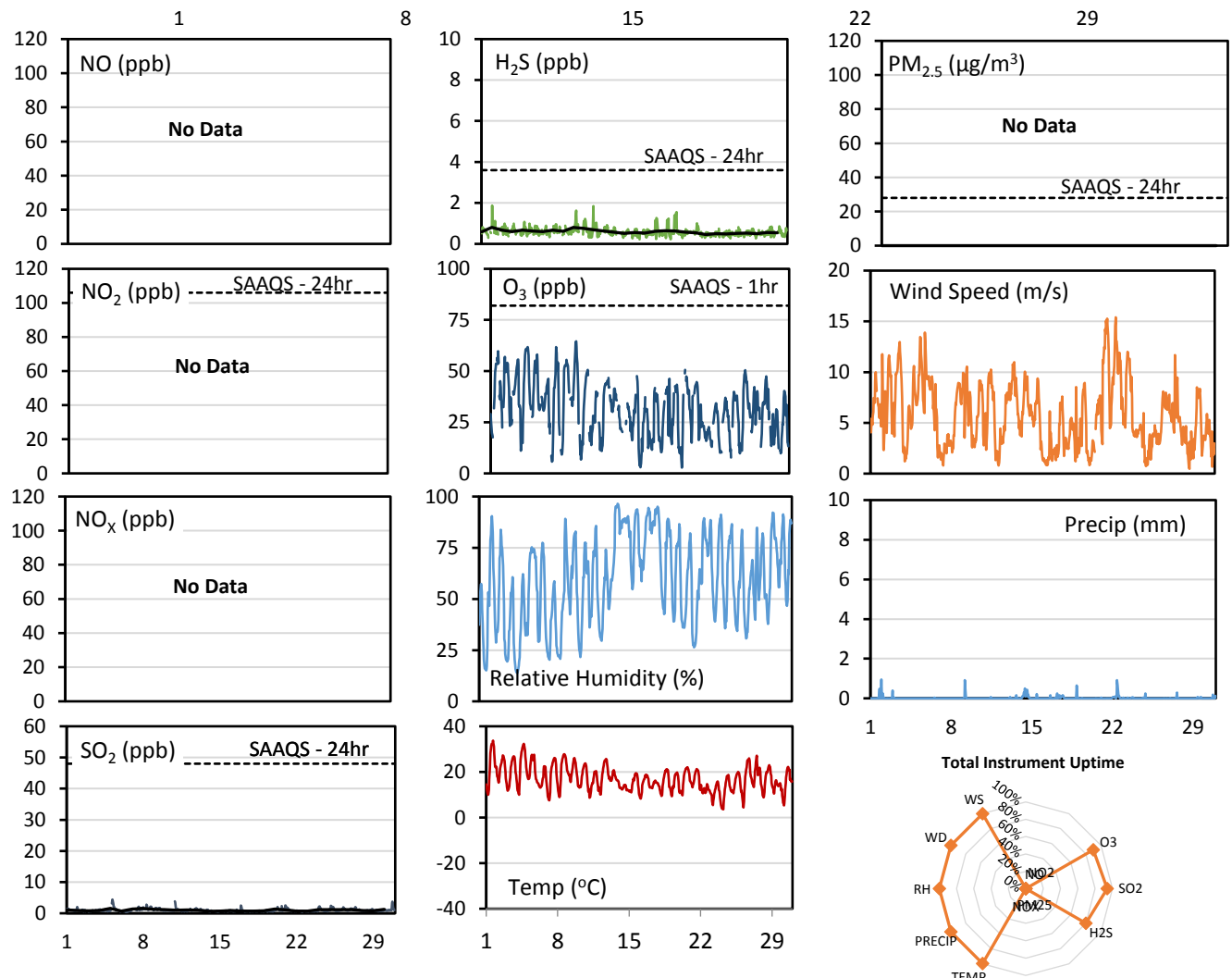
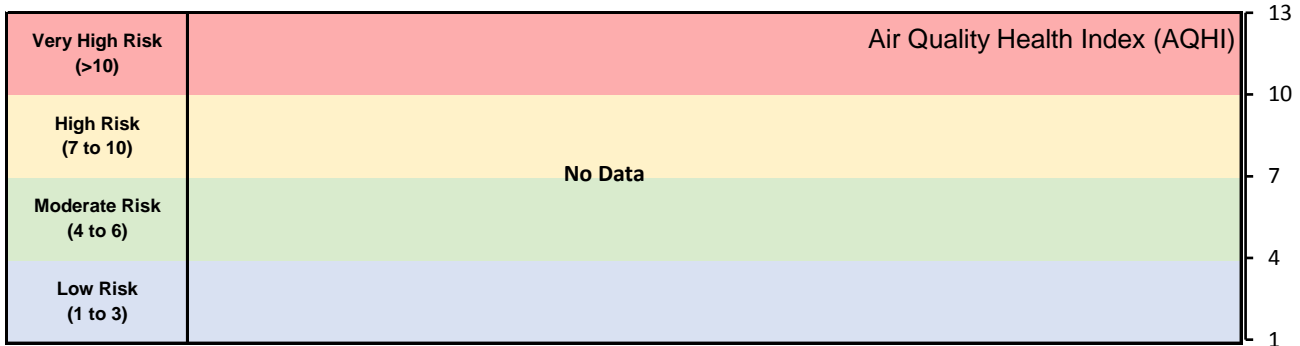


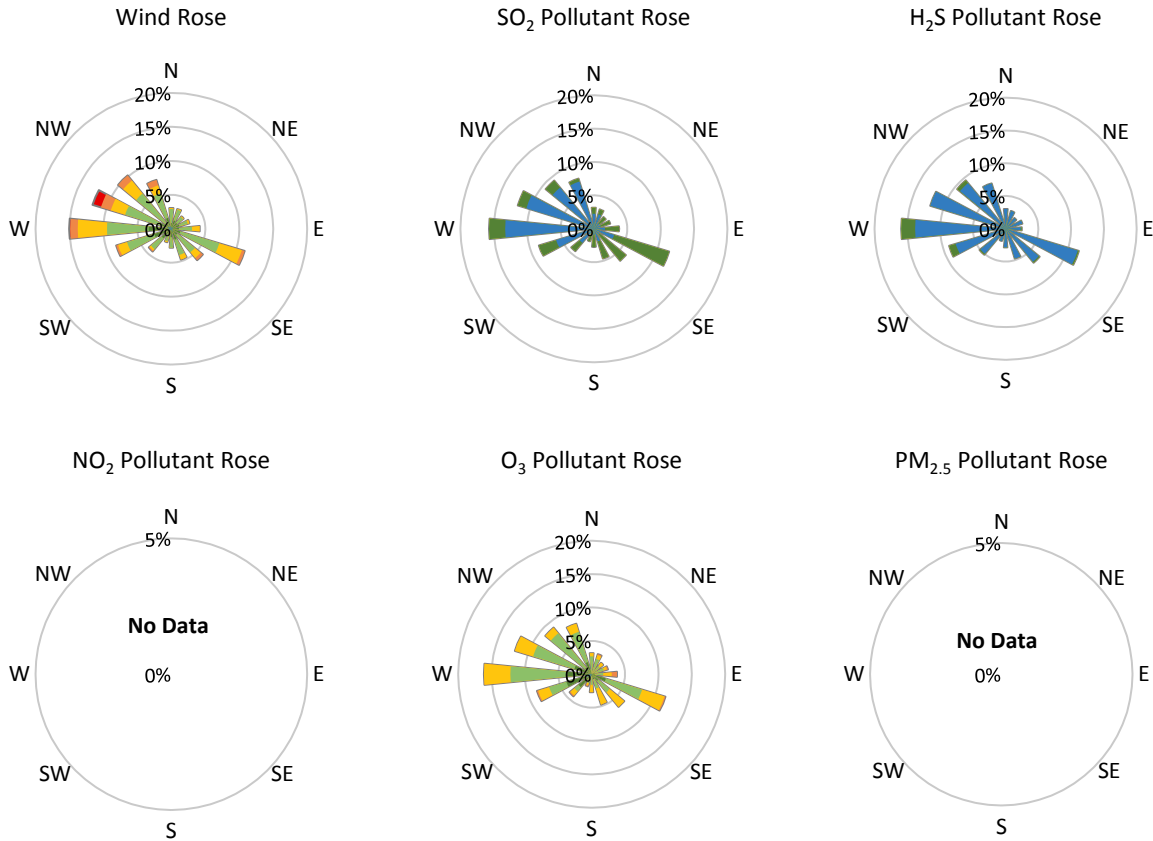
GPAZ Pense Station - June 2017 Summary Report

Pollutants		Month Records		24-Hour Records				1-Hour Records			
Name	Conc. Unit	Avg. Conc.	Uptime	Maximum		SAAQS Standard	Exceed Days	Maximum		SAAQS Standard	Exceed Hours
				Conc.	Time			Conc.	Time		
NO	ppb	No Data	No Data	No Data	No Data	-	No Data	No Data	No Data	-	No Data
NO ₂	ppb	No Data	No Data	No Data	No Data	106	No Data	No Data	No Data	159	No Data
NO _x	ppb	No Data	No Data	No Data	No Data	-	No Data	No Data	No Data	-	No Data
SO ₂	ppb	1.0	94%	1.6	Jun-05	48	0	4.4	Jun-05 04:00	172	0
H ₂ S	ppb	0.6	80%	0.8	Jun-02	3.6	0	1.9	Jun-02 01:00	11	0
O ₃	ppb	31.5	90%	44.4	Jun-04	-	-	64.6	Jun-09 14:00	82	0
PM _{2.5}	µg/m ³	No Data	No Data	No Data	No Data	28	No Data	No Data	No Data	-	No Data

SAAQS: Saskatchewan Ambient Air Quality Standards



* colored lines indicate 1-hr concentration data for all parameters; solid black lines indicate 24-hr concentrations for PM_{2.5}, NO₂, SO₂, and H₂S



Parameters	Unit	Color Code for Wind Speed and Pollution Concentration Class						
Wind Speed	m/s	0.3 ≤ WS < 1.4	1.4 ≤ WS < 3.1	3.1 ≤ WS < 7.8	7.8 ≤ WS < 10.8	10.8 ≤ WS < 13.6	WS ≥ 13.6	
SO ₂	ppb	0 ≤ C < 1	1 ≤ C < 5	5 ≤ C < 10	10 ≤ C < 57	57 ≤ C < 172	C ≥ 172	
NO ₂	ppb	0 ≤ C < 5	5 ≤ C < 15	15 ≤ C < 30	30 ≤ C < 100	100 ≤ C < 212	C ≥ 212	
H ₂ S	ppb	0 ≤ C < 1	1 ≤ C < 3.6	3.6 ≤ C < 5	5 ≤ C < 8	8 ≤ C < 10.8	C ≥ 10.8	
O ₃	ppb	0 ≤ C < 10	10 ≤ C < 20	20 ≤ C < 40	40 ≤ C < 60	60 ≤ C < 82	C ≥ 82	
PM _{2.5}	µg/m ³	0 ≤ C < 2	2 ≤ C < 4	4 ≤ C < 10	10 ≤ C < 20	20 ≤ C < 30	C ≥ 30	

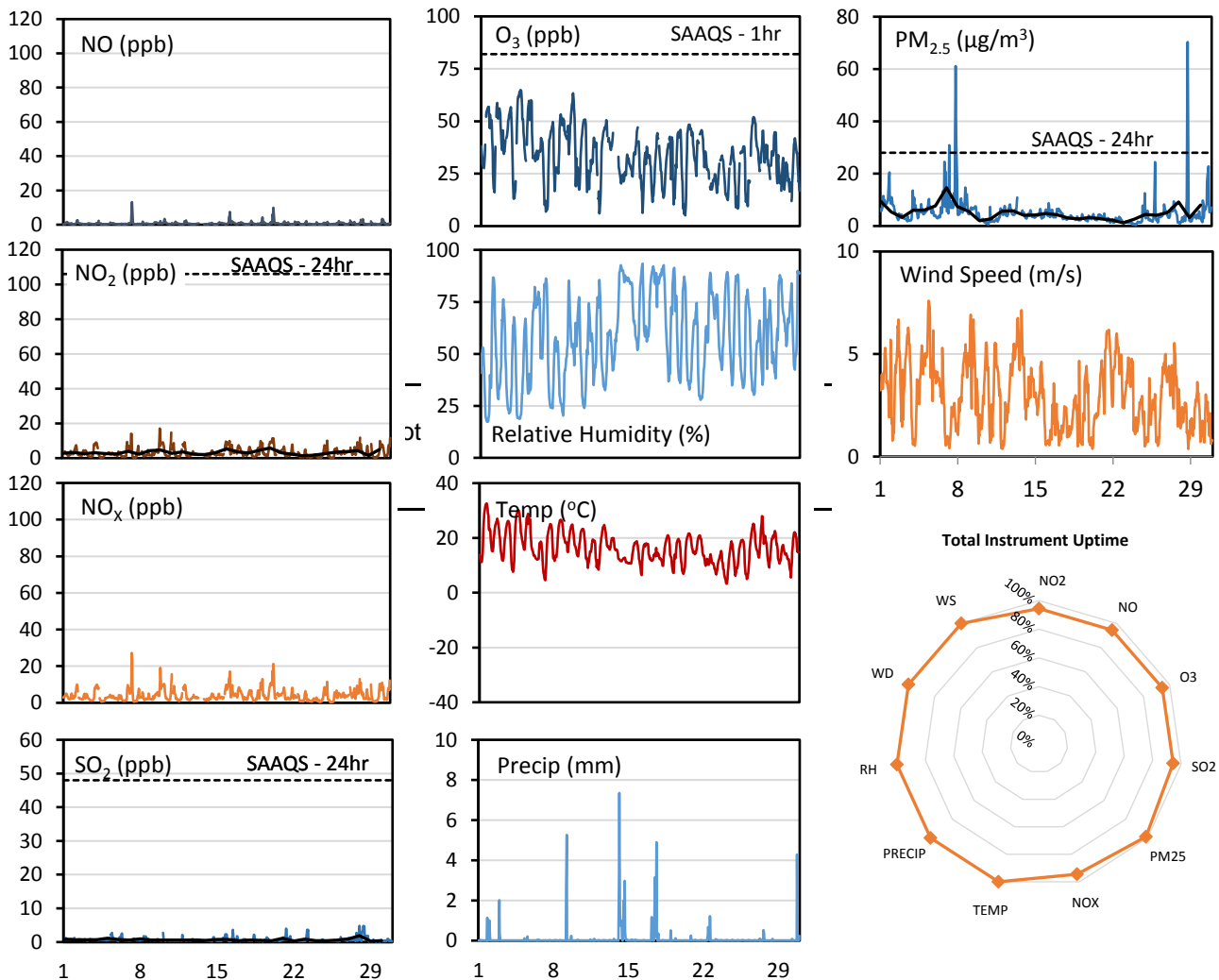
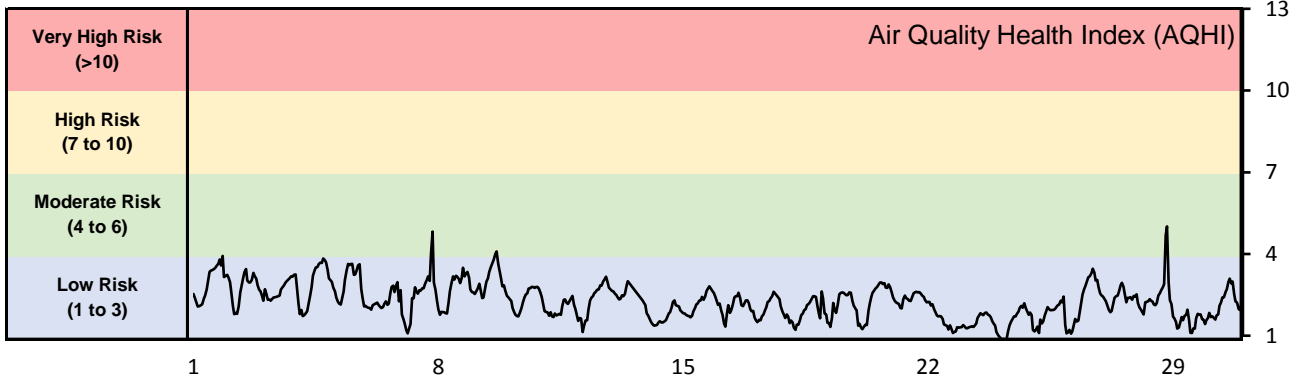
Monthly Update

- Achieved 98.2%, 98.3%, and 83.6% of scheduled uptime for SO₂, O₃, and H₂S respectively
- Achieved 94%, 90% and 80% total uptime for SO₂, O₃, and H₂S respectively
- Downtime of 4% due to routine daily Internal Zeroes and Spans (8% for O₃)
- Downtime for all other parameters due to operational issues
- Calibration performed June 14
- Wind sensor height increased on June 20

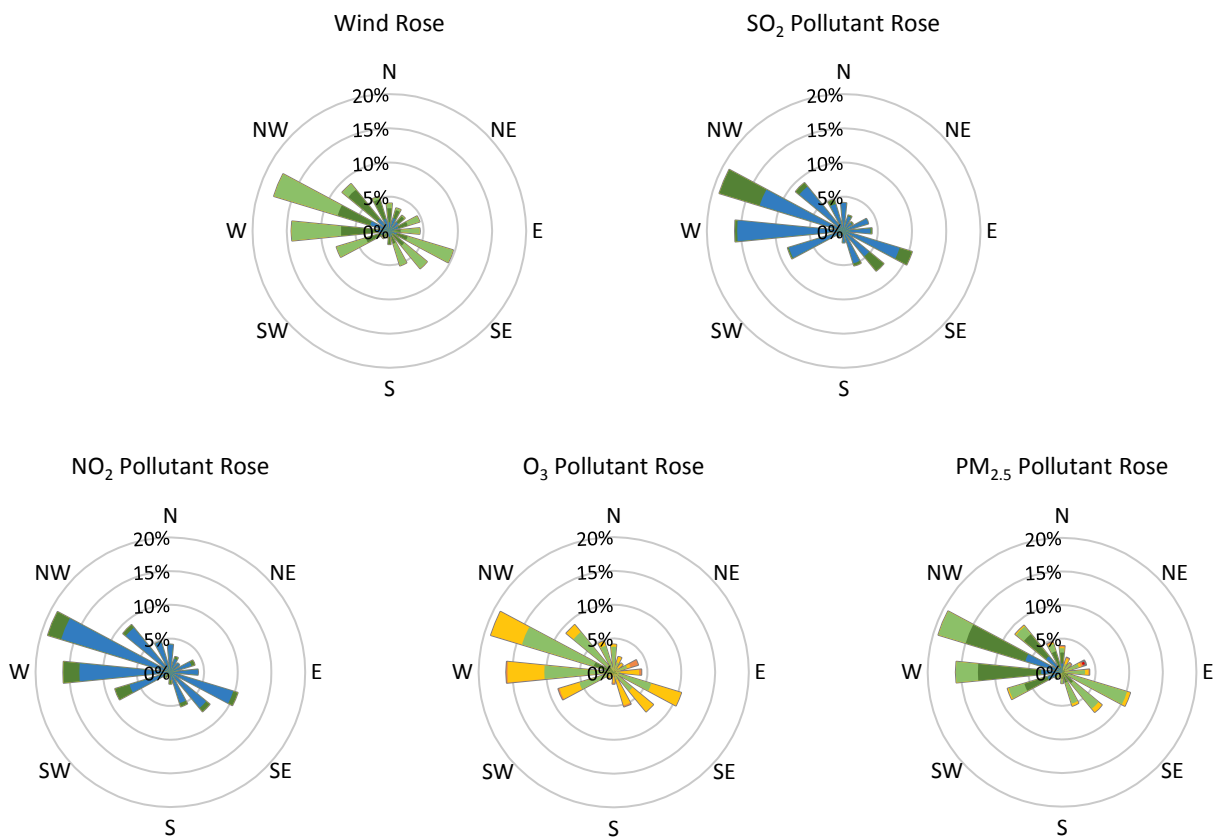
GPAZ East Regina Station - June 2017 Summary Report

Pollutants		Month Records		24-Hour Records				1-Hour Records			
Name	Conc. Unit	Avg. Conc.	Uptime	Maximum		SAAQS Standard	Exceed Days	Maximum		SAAQS Standard	Exceed Hours
				Conc.	Time			Conc.	Time		
NO	ppb	0.8	94%	1.8	Jun-20	-	-	13.2	Jun-07 07:00	-	-
NO ₂	ppb	3.2	94%	5.8	Jun-20	106	0	17.1	Jun-09 22:00	159	0
NO _x	ppb	4.0	94%	7.6	Jun-20	-	-	27.2	Jun-07 07:00	-	-
SO ₂	ppb	0.7	94%	1.9	Jun-28	48	0	4.8	Jun-28 08:00	172	0
O ₃	ppb	33.6	94%	46.6	Jun-09	-	-	64.9	Jun-04 17:00	82	0
PM _{2.5}	µg/m ³	5.0	99%	14.6	Jun-07	28	0	70.3	Jun-28 20:00	-	-

SAAQS: Saskatchewan Ambient Air Quality Standards



* colored lines indicate 1-hr concentration data for all parameters; solid black lines indicate 24-hr concentrations for PM_{2.5}, NO₂, and SO₂



Parameters	Unit	Color Code for Wind Speed and Pollution Concentration Class					
		$0.3 \leq WS < 1.4$	$1.4 \leq WS < 3.1$	$3.1 \leq WS < 7.8$	$7.8 \leq WS < 10.8$	$10.8 \leq WS < 13.6$	$WS \geq 13.6$
SO ₂	ppb	$0 \leq C < 1$	$1 \leq C < 5$	$5 \leq C < 10$	$10 \leq C < 57$	$57 \leq C < 172$	$C \geq 172$
NO ₂	ppb	$0 \leq C < 5$	$5 \leq C < 15$	$15 \leq C < 30$	$30 \leq C < 100$	$100 \leq C < 212$	$C \geq 212$
O ₃	ppb	$0 \leq C < 10$	$10 \leq C < 20$	$20 \leq C < 40$	$40 \leq C < 60$	$60 \leq C < 82$	$C \geq 82$
PM _{2.5}	$\mu\text{g}/\text{m}^3$	$0 \leq C < 2$	$2 \leq C < 4$	$4 \leq C < 10$	$10 \leq C < 20$	$20 \leq C < 30$	$C \geq 30$

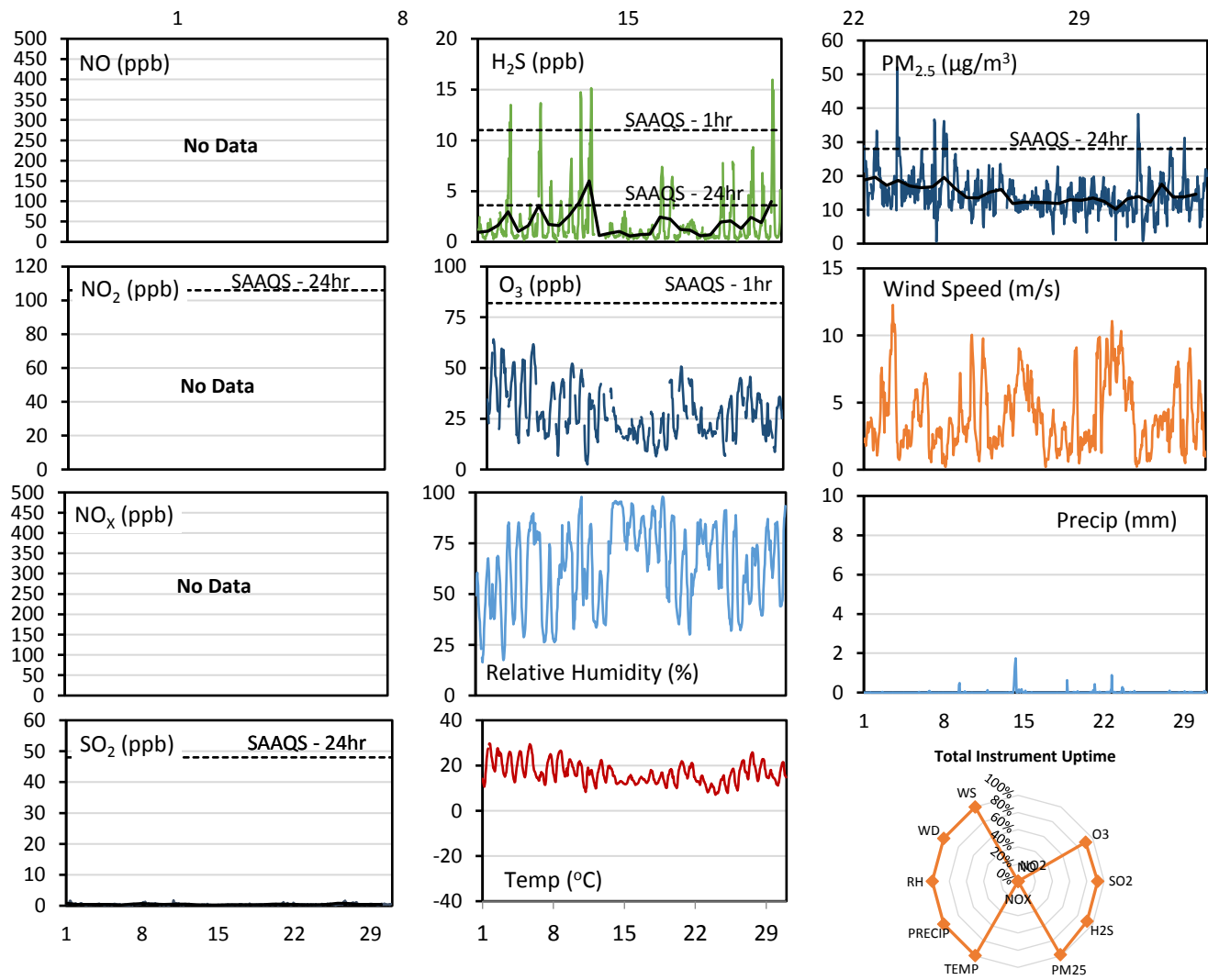
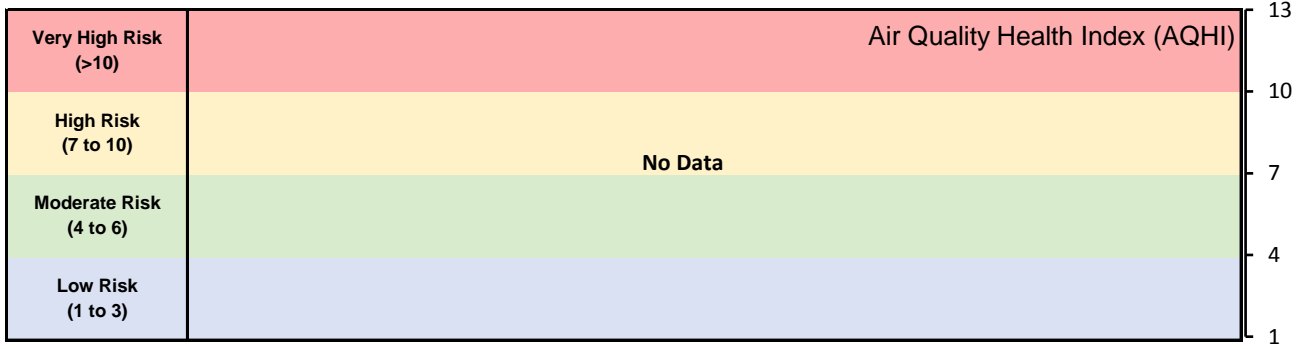
Monthly Update

- Achieved >98% of scheduled uptime for all parameters
- All parameters achieved >94% of total uptime
- Downtime of 4% results from routine daily Internal Zeroes and Spans
- Calibration performed June 13

GPAZ Yorkton Station - June 2017 Summary Report

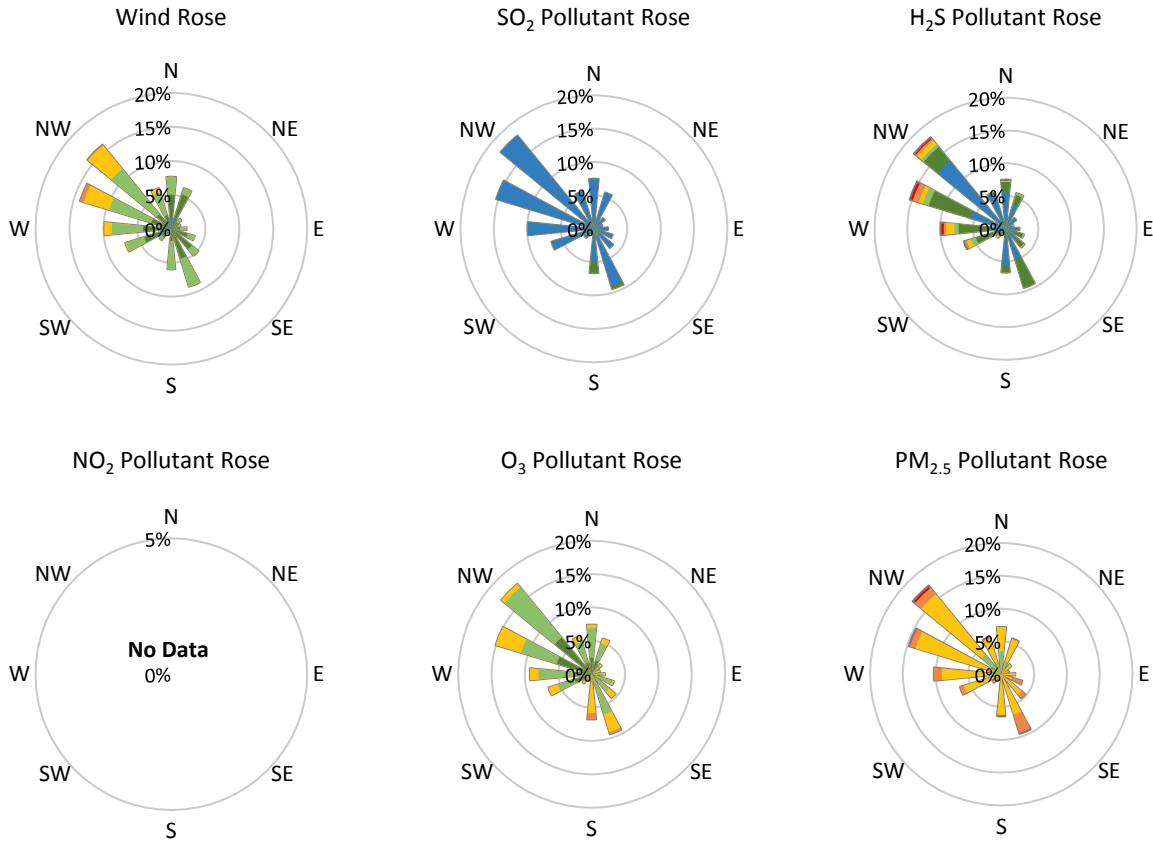
Pollutants		Month Records		24-Hour Records				1-Hour Records			
Name	Conc. Unit	Avg. Conc.	Uptime	Maximum		SAAQS Standard	Exceed Days	Maximum		SAAQS Standard	Exceed Hours
				Conc.	Time			Conc.	Time		
NO	ppb	No Data	No Data	No Data	No Data	-	No Data	No Data	No Data	-	No Data
NO ₂	ppb	No Data	No Data	No Data	No Data	106	No Data	No Data	No Data	159	No Data
NO _x	ppb	No Data	No Data	No Data	No Data	-	No Data	No Data	No Data	-	No Data
SO ₂	ppb	0.4	93%	0.8	Jun-01	48	0	1.8	Jun-10 21:00	172	0
H ₂ S	ppb	1.8	93%	6.0	Jun-12	3.6	3	16.0	Jun-30 03:00	11	11
O ₃	ppb	28.5	91%	44.3	Jun-01	-	-	64.2	Jun-01 16:00	82	0
PM _{2.5}	µg/m ³	14.6	98%	19.6	Jun-02	28	0	52.1	Jun-03 22:00	-	-

SAAQS: Saskatchewan Ambient Air Quality Standards



* colored lines indicate 1-hr concentration data for all parameters; solid black lines indicate 24-hr concentrations for PM_{2.5}, NO₂, SO₂, and H₂S

GPAZ Yorkton Station - June 2017 Summary Report



Parameters	Unit	Color Code for Wind Speed and Pollution Concentration Class						
Wind Speed	m/s	0.3 ≤ WS < 1.4	1.4 ≤ WS < 3.1	3.1 ≤ WS < 7.8	7.8 ≤ WS < 10.8	10.8 ≤ WS < 13.6	WS ≥ 13.6	
SO ₂	ppb	0 ≤ C < 1	1 ≤ C < 5	5 ≤ C < 10	10 ≤ C < 57	57 ≤ C < 172	C ≥ 172	
NO ₂	ppb	0 ≤ C < 5	5 ≤ C < 15	15 ≤ C < 30	30 ≤ C < 100	100 ≤ C < 212	C ≥ 212	
H ₂ S	ppb	0 ≤ C < 1	1 ≤ C < 3.6	3.6 ≤ C < 5	5 ≤ C < 8	8 ≤ C < 10.8	C ≥ 10.8	
O ₃	ppb	0 ≤ C < 10	10 ≤ C < 20	20 ≤ C < 40	40 ≤ C < 60	60 ≤ C < 82	C ≥ 82	
PM _{2.5}	µg/m ³	0 ≤ C < 2	2 ≤ C < 4	4 ≤ C < 10	10 ≤ C < 20	20 ≤ C < 30	C ≥ 30	

Monthly Update

- Achieved >94.8% of scheduled uptime for all parameters except for NOx
- Achieved 93% of total uptime for SO₂ and H₂S, and 91% for O₃
- NOx invalidated due to operational issues
- Downtime of 4% due to routine daily Internal Zeroes and Spans
- Calibration performed June 12 and 13

GPAZ Yorkton Station - June 2017 Summary Report

Exceedance Summary (1- Hour Average - Exceedances Highlighted)											
Exceedance Time	AQHI	NO ₂	NO	SO ₂	O ₃	NO _x	H ₂ S	PM _{2.5}	Temp	WD	WS
	-	ppb	ppb	ppb	ppb	ppb	ppb	µg/m ³	°C	deg	m/s
Jun-04 03:00	#N/A	-	-	0.4	15.9	-	11.8	26.1	13.2	276.9	0.7
Jun-04 05:00	#N/A	-	-	0.4	13.0	-	11.3	23.8	12.8	277.0	1.1
Jun-04 06:00	#N/A	-	-	0.5	17.4	-	13.5	21.9	14.4	275.5	2.1
Jun-07 04:00	#N/A	-	-	0.6	16.7	-	13.0	36.7	11.4	310.0	2.2
Jun-07 05:00	#N/A	-	-	0.6	16.2	-	13.7	35.6	11.6	316.4	2.1
Jun-11 04:00	#N/A	-	-	0.5	2.5	-	14.7	13.6	8.2	10.0	1.0
Jun-11 05:00	#N/A	-	-	0.5	5.4	-	14.1	14.4	9.5	292.4	1.5
Jun-12 04:00	#N/A	-	-	0.5	16.0	-	12.3	19.0	9.9	253.7	1.2
Jun-12 05:00	#N/A	-	-	0.5	13.5	-	15.2	18.1	10.0	315.9	1.0
Jun-30 03:00	#N/A	-	-	0.6	9.4	-	16.0	19.8	11.8	283.1	1.6
Jun-30 05:00	#N/A	-	-	0.3	11.9	-	14.9	17.1	11.9	287.3	2.3

Exceedance Summary (24- Hour Average - Exceedances Highlighted)											
Exceedance Time	AQHI	NO ₂	NO	SO ₂	O ₃	NO _x	H ₂ S	PM _{2.5}	Temp	WD	WS
	-	ppb	ppb	ppb	ppb	ppb	ppb	µg/m ³	°C	deg	m/s
Jun-11	#N/A	-	-	0.5	22.5	-	3.9	13.5	14.6	231.4	5.0
Jun-12	#N/A	-	-	0.5	28.0	-	6.0	15.2	16.6	192.8	2.0
Jun-30	#N/A	-	-	0.4	25.5	-	4.0	14.6	16.2	287.7	3.6