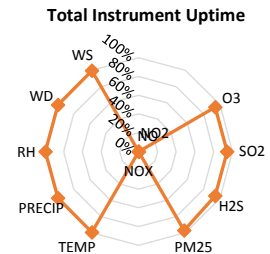
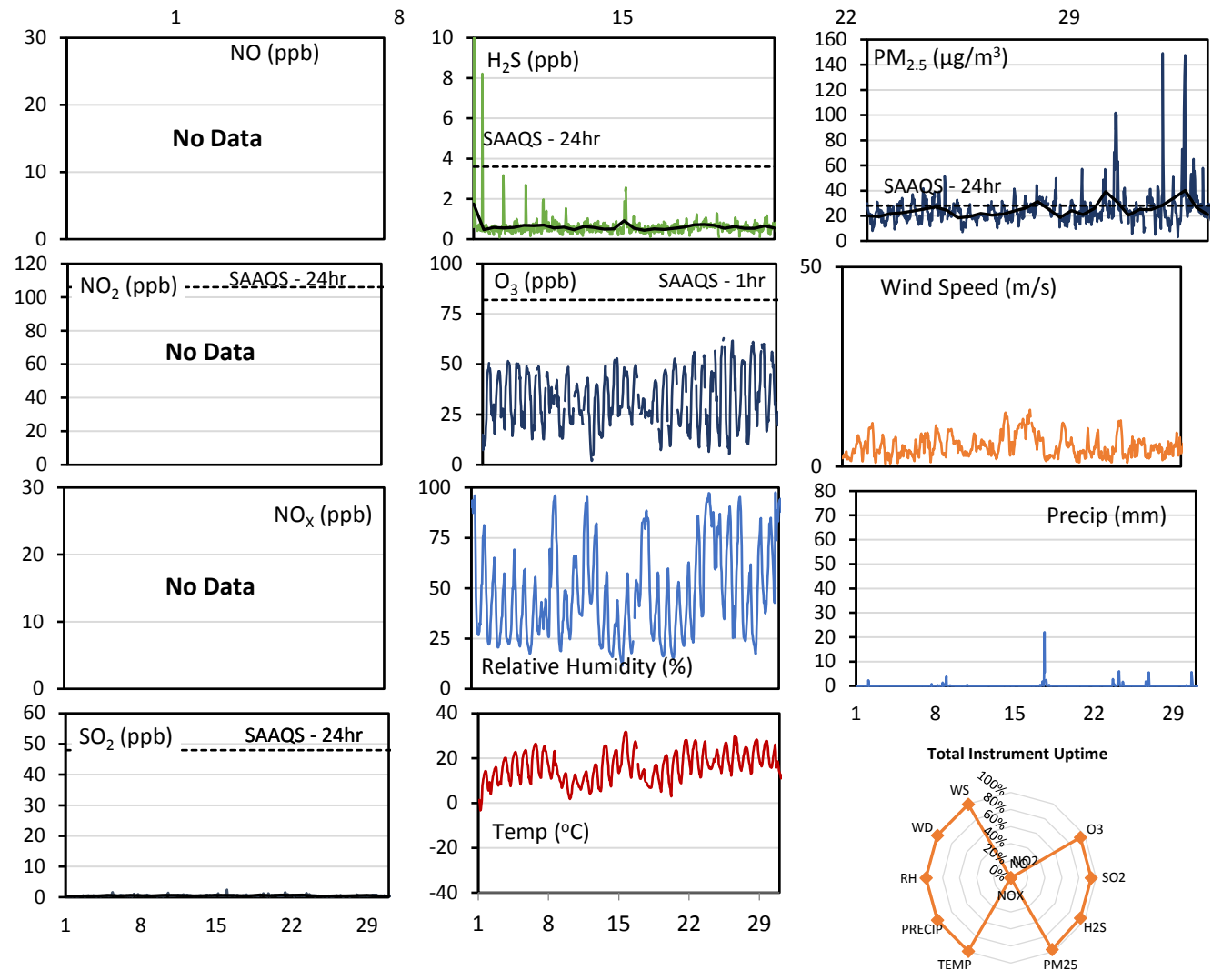
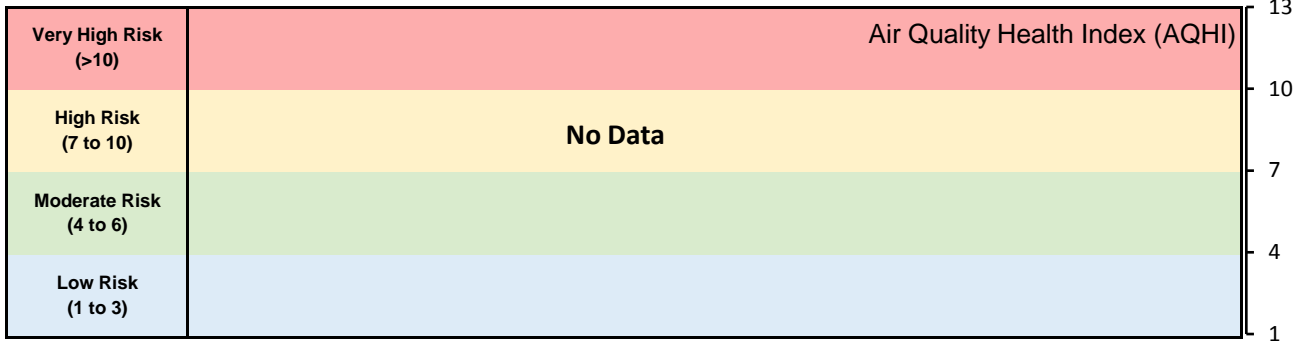


GPAZ Pense Station - May 2018 Summary Report

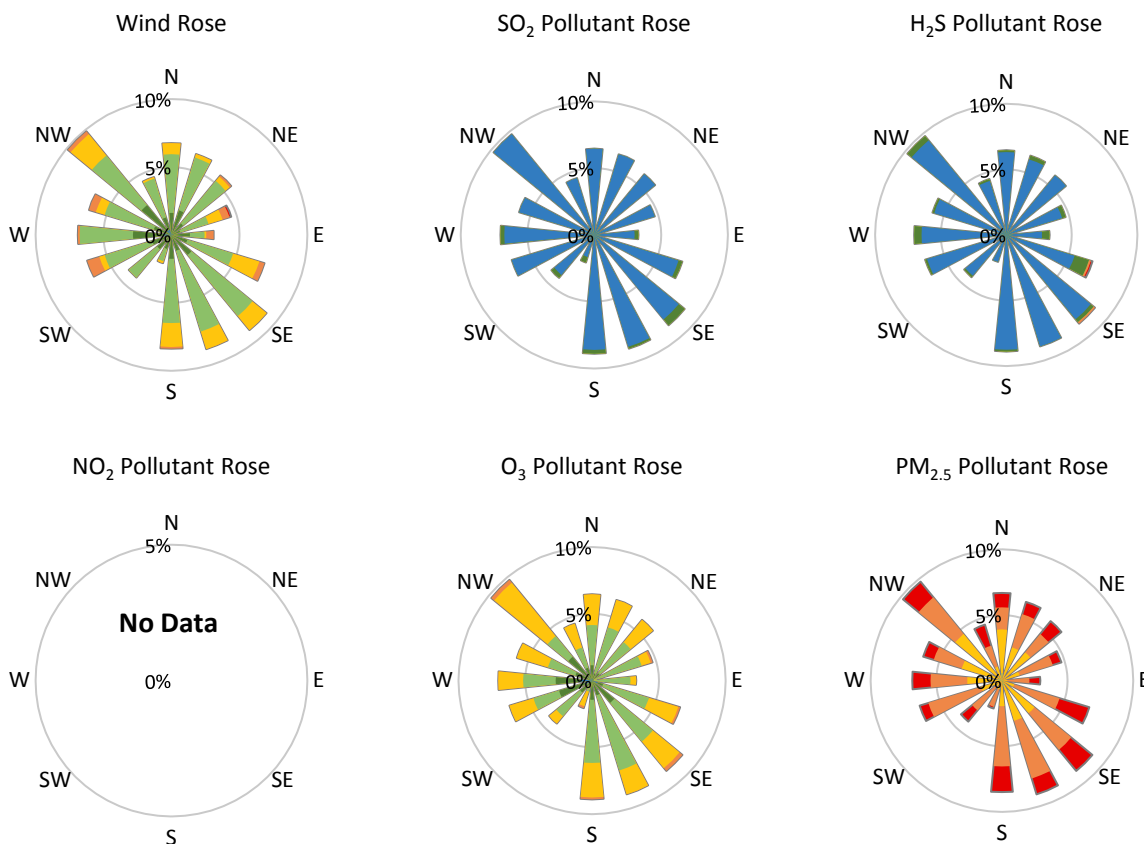
Pollutants		Month Records		24-Hour Records				1-Hour Records			
Name	Conc. Unit	Avg. Conc.	Total Uptime	Maximum		SAAQS Standard	Exceed Days	Maximum		SAAQS Standard	Exceed Hours
				Conc.	Time			Conc.	Time		
NO	ppb	No Data	No Data	No Data	No Data	-	No Data	No Data	No Data	-	No Data
NO ₂	ppb	No Data	No Data	No Data	No Data	106	No Data	No Data	No Data	159	No Data
NO _x	ppb	No Data	No Data	No Data	No Data	-	No Data	No Data	No Data	-	No Data
SO ₂	ppb	0.5	94%	0.7	May-21	48	0	2.5	May-16 00:00	172	0
H ₂ S	ppb	0.6	94%	1.8	May-01	3.6	0	11.2	May-01 02:00	11	1
O ₃	ppb	32.6	94%	42.2	May-29	-	-	63.0	May-25 15:00	82	0
PM _{2.5}	µg/m ³	24.8	97%	40.1	May-29	28	6	149.2	May-27 01:00	-	-

SAAQS: Saskatchewan Ambient Air Quality Standards



* colored lines indicate 1-hr concentration data for all parameters; solid black lines indicate 24-hr concentrations for PM_{2.5}, NO₂, SO₂, and H₂S

GPAZ Pense Station - May 2018 Summary Report



Parameters	Unit	Color Code for Wind Speed and Pollution Concentration Class					
		$0.3 \leq WS < 1.4$	$1.4 \leq WS < 3.1$	$3.1 \leq WS < 7.8$	$7.8 \leq WS < 10.8$	$10.8 \leq WS < 13.6$	$WS \geq 13.6$
SO ₂	ppb	$0 \leq C < 1$	$1 \leq C < 5$	$5 \leq C < 10$	$10 \leq C < 57$	$57 \leq C < 172$	$C \geq 172$
NO ₂	ppb	$0 \leq C < 5$	$5 \leq C < 15$	$15 \leq C < 30$	$30 \leq C < 100$	$100 \leq C < 212$	$C \geq 212$
H ₂ S	ppb	$0 \leq C < 1$	$1 \leq C < 3.6$	$3.6 \leq C < 5$	$5 \leq C < 8$	$8 \leq C < 10.8$	$C \geq 10.8$
O ₃	ppb	$0 \leq C < 10$	$10 \leq C < 20$	$20 \leq C < 40$	$40 \leq C < 60$	$60 \leq C < 82$	$C \geq 82$
PM _{2.5}	$\mu\text{g}/\text{m}^3$	$0 \leq C < 2$	$2 \leq C < 4$	$4 \leq C < 10$	$10 \leq C < 20$	$20 \leq C < 30$	$C \geq 30$

Monthly Update

- Achieved >94.4% of total uptime for all parameters except NO_x (0%)
- Achieved >97.2% of scheduled uptime for all parameters except NO_x (0%)
- Downtime of 4% due to routine daily internal zeroes and spans
- NO_x monitor was being serviced

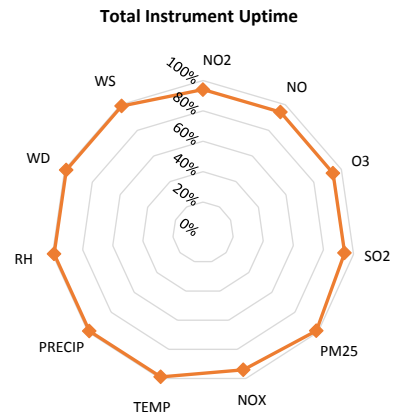
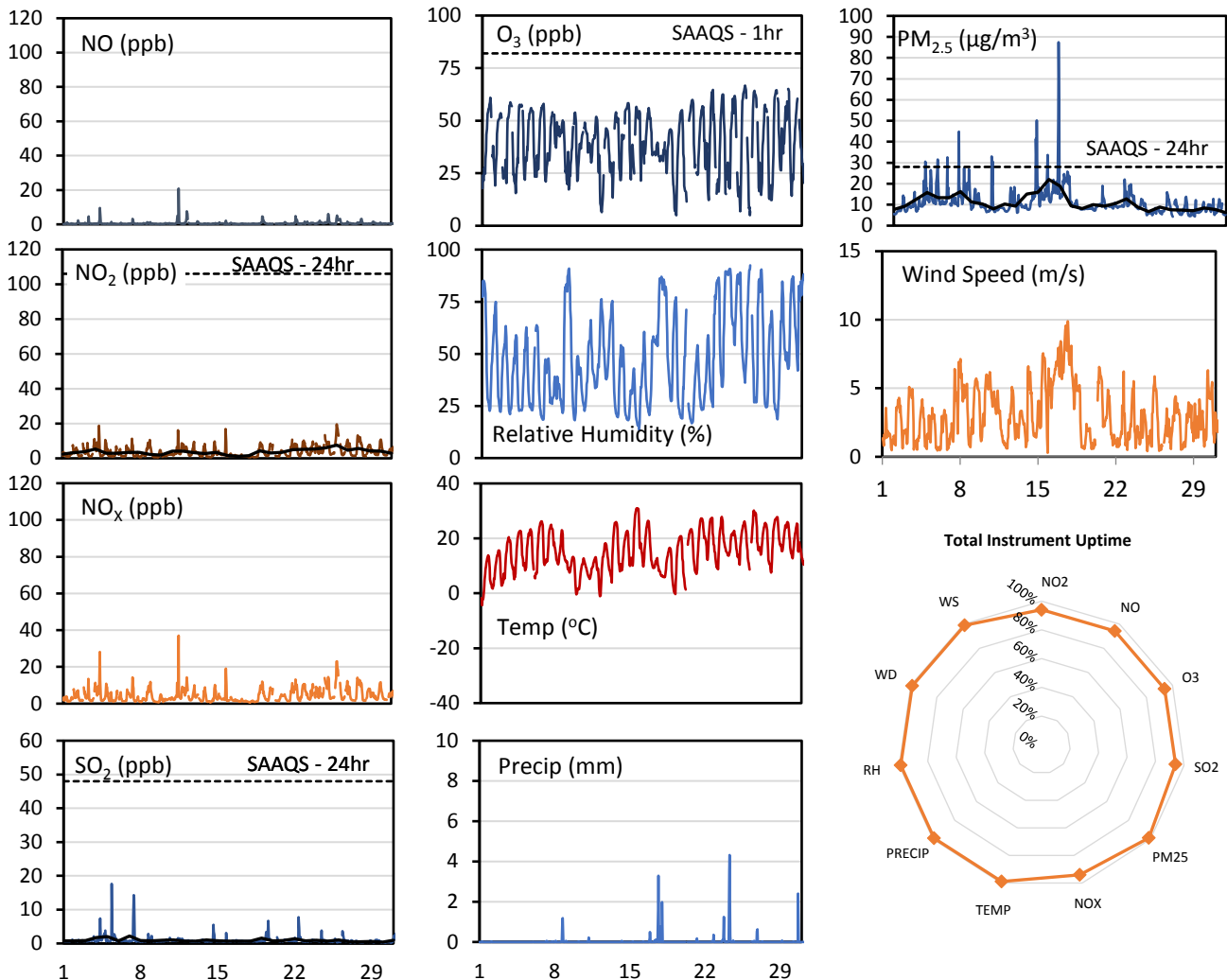
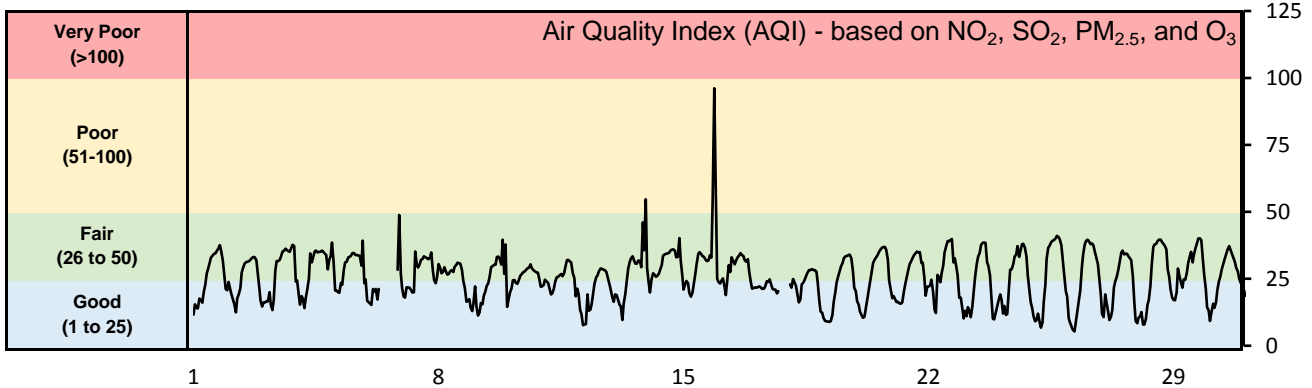
Exceedance Summary (24- Hour Average - Exceedances Highlighted)

Exceedance Time	AQHI	NO ₂ ppb	NO ppb	SO ₂ ppb	O ₃ ppb	NO _x ppb	H ₂ S ppb	PM _{2.5} $\mu\text{g}/\text{m}^3$	Temp °C	WD deg	WS m/s
May-16	-	-	-	0.6	35.8	-	0.9	31.3	19.8	110.5	8.0
May-22	-	-	-	0.6	34.3	-	0.6	39.3	21.2	219.4	4.1
May-23	-	-	-	0.7	29.0	-	0.7	31.2	19.0	134.1	4.6
May-27	-	-	-	0.4	32.8	-	0.6	28.2	20.2	190.9	5.1
May-28	-	-	-	0.5	38.6	-	0.5	34.1	21.9	143.1	4.0
May-29	-	-	-	0.6	42.2	-	0.5	40.1	22.1	108.4	3.7

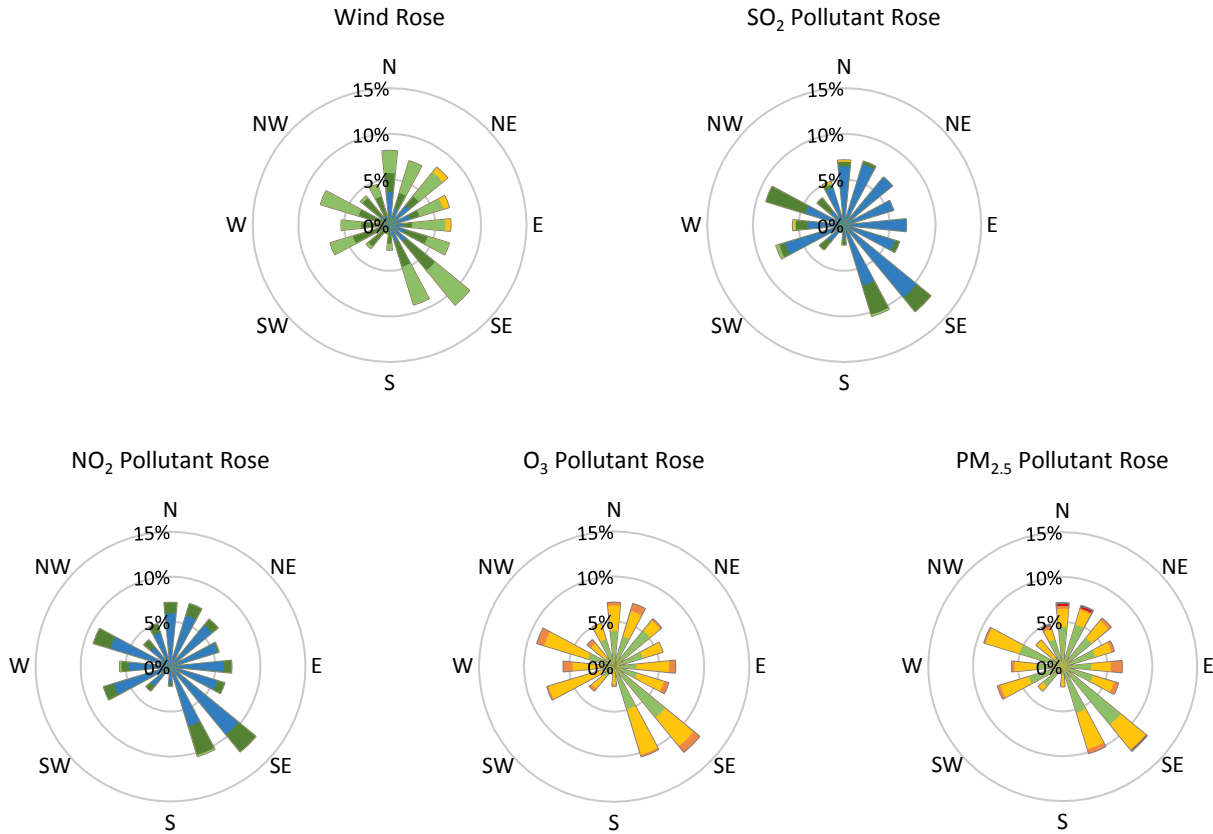
GPAZ East Regina Station - May 2018 Summary Report

Pollutants		Month Records		24-Hour Records				1-Hour Records			
Name	Conc. Unit	Avg. Conc.	Uptime	Maximum		SAAQS Standard	Exceed Days	Maximum		SAAQS Standard	Exceed Hours
				Conc.	Time			Conc.	Time		
NO	ppb	0.6	94%	1.6	May-11	-	-	20.8	May-11 13:00	-	-
NO ₂	ppb	3.7	94%	7.6	May-26	106	0	19.5	May-26 00:00	159	0
NO _x	ppb	4.3	94%	9.0	May-26	-	-	37.0	May-11 13:00	-	-
SO ₂	ppb	0.9	94%	2.2	May-07	48	0	17.6	May-05 09:00	172	0
O ₃	ppb	39.1	94%	45.0	May-29	-	-	66.7	May-25 16:00	82	0
PM _{2.5}	µg/m ³	10.9	99%	22.0	May-15	28	0	87.4	May-15 21:00	-	-

SAAQS: Saskatchewan Ambient Air Quality Standards



* colored lines indicate 1-hr concentration data for all parameters; solid black lines indicate 24-hr concentrations for PM_{2.5}, NO₂, and SO₂



Parameters	Unit	Color Code for Wind Speed and Pollution Concentration Class						
		$0.3 \leq WS < 1.4$	$1.4 \leq WS < 3.1$	$3.1 \leq WS < 7.8$	$7.8 \leq WS < 10.8$	$10.8 \leq WS < 13.6$	$WS \geq 13.6$	
SO ₂	ppb	$0 \leq C < 1$	$1 \leq C < 5$	$5 \leq C < 10$	$10 \leq C < 57$	$57 \leq C < 172$	$C \geq 172$	
NO ₂	ppb	$0 \leq C < 5$	$5 \leq C < 15$	$15 \leq C < 30$	$30 \leq C < 100$	$100 \leq C < 212$	$C \geq 212$	
O ₃	ppb	$0 \leq C < 10$	$10 \leq C < 20$	$20 \leq C < 40$	$40 \leq C < 60$	$60 \leq C < 82$	$C \geq 82$	
PM _{2.5}	$\mu\text{g}/\text{m}^3$	$0 \leq C < 2$	$2 \leq C < 4$	$4 \leq C < 10$	$10 \leq C < 20$	$20 \leq C < 30$	$C \geq 30$	

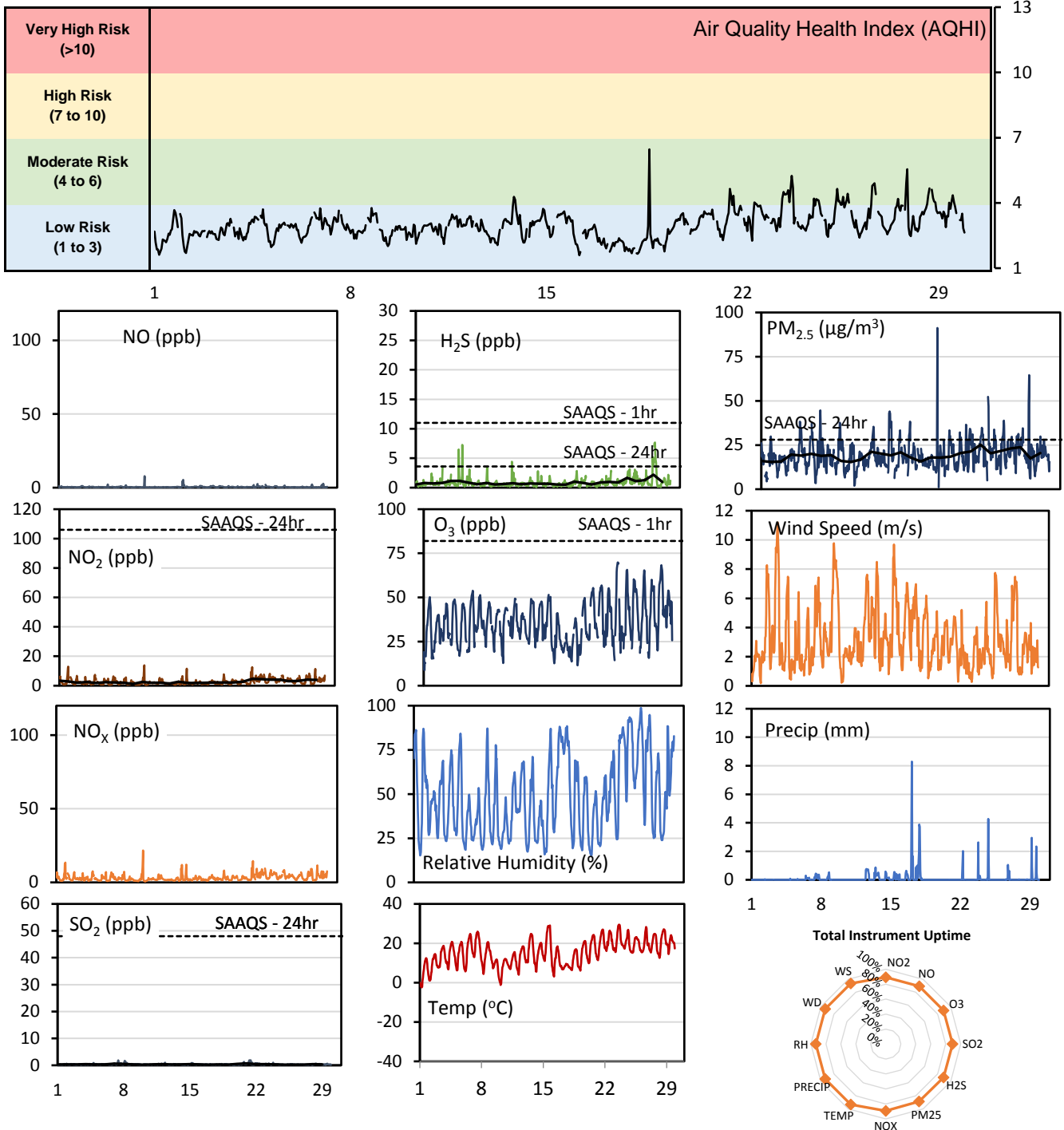
Monthly Update

- Achieved >98.4% of scheduled uptime for all parameters
- Achieved >94.1% of total uptime for all parameters
- Downtime of 4% results from routine daily internal zeroes and spans

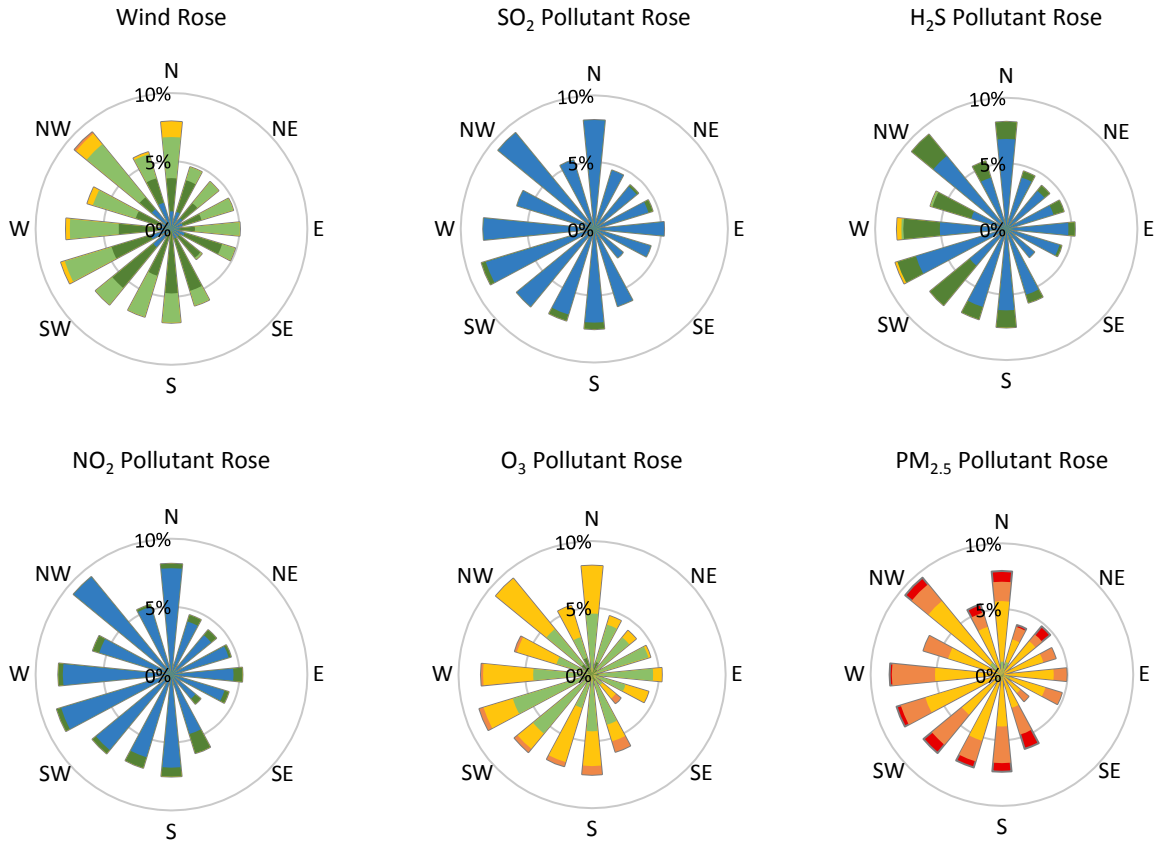
GPAZ Yorkton Station - May 2018 Summary Report

Pollutants		Month Records		24-Hour Records				1-Hour Records			
Name	Conc. Unit	Avg. Conc.	Total Uptime	Maximum		SAAQS Standard	Exceed Days	Maximum		SAAQS Standard	Exceed Hours
				Conc.	Time			Conc.	Time		
NO	ppb	0.5	89%	1.0	May-14	-	-	7.8	May-10 06:00	-	-
NO ₂	ppb	2.7	89%	4.7	May-22	106	0	13.9	May-10 06:00	159	0
NO _x	ppb	3.1	89%	5.3	May-22	-	-	21.7	May-10 06:00	-	-
SO ₂	ppb	0.4	89%	0.7	May-21	48	0	1.9	May-21 07:00	172	0
H ₂ S	ppb	0.9	89%	2.2	May-28	3.6	0	7.7	May-28 04:00	11	0
O ₃	ppb	36.0	89%	47.0	May-28	-	-	69.8	May-23 14:00	82	0
PM _{2.5}	µg/m ³	19.1	89%	25.1	May-23	28	0	91.2	May-18 16:00	-	-

SAAQS: Saskatchewan Ambient Air Quality Standards



* colored lines indicate 1-hr concentration data for all parameters; solid black lines indicate 24-hr concentrations for PM_{2.5}, NO₂, SO₂, and H₂S



Parameters	Unit	Color Code for Wind Speed and Pollution Concentration Class					
		0.3 ≤ WS < 1.4	1.4 ≤ WS < 3.1	3.1 ≤ WS < 7.8	7.8 ≤ WS < 10.8	10.8 ≤ WS < 13.6	WS ≥ 13.6
SO ₂	ppb	0 ≤ C < 1	1 ≤ C < 5	5 ≤ C < 10	10 ≤ C < 57	57 ≤ C < 172	C ≥ 172
NO ₂	ppb	0 ≤ C < 5	5 ≤ C < 15	15 ≤ C < 30	30 ≤ C < 100	100 ≤ C < 212	C ≥ 212
H ₂ S	ppb	0 ≤ C < 1	1 ≤ C < 3.6	3.6 ≤ C < 5	5 ≤ C < 8	8 ≤ C < 10.8	C ≥ 10.8
O ₃	ppb	0 ≤ C < 10	10 ≤ C < 20	20 ≤ C < 40	40 ≤ C < 60	60 ≤ C < 82	C ≥ 82
PM _{2.5}	µg/m ³	0 ≤ C < 2	2 ≤ C < 4	4 ≤ C < 10	10 ≤ C < 20	20 ≤ C < 30	C ≥ 30

Monthly Update

- Achieved >88.7% of total uptime for all parameters
- Achieved >88.7% of scheduled uptime for all parameters
- Downtime of 4% due to routine daily internal zeroes and spans