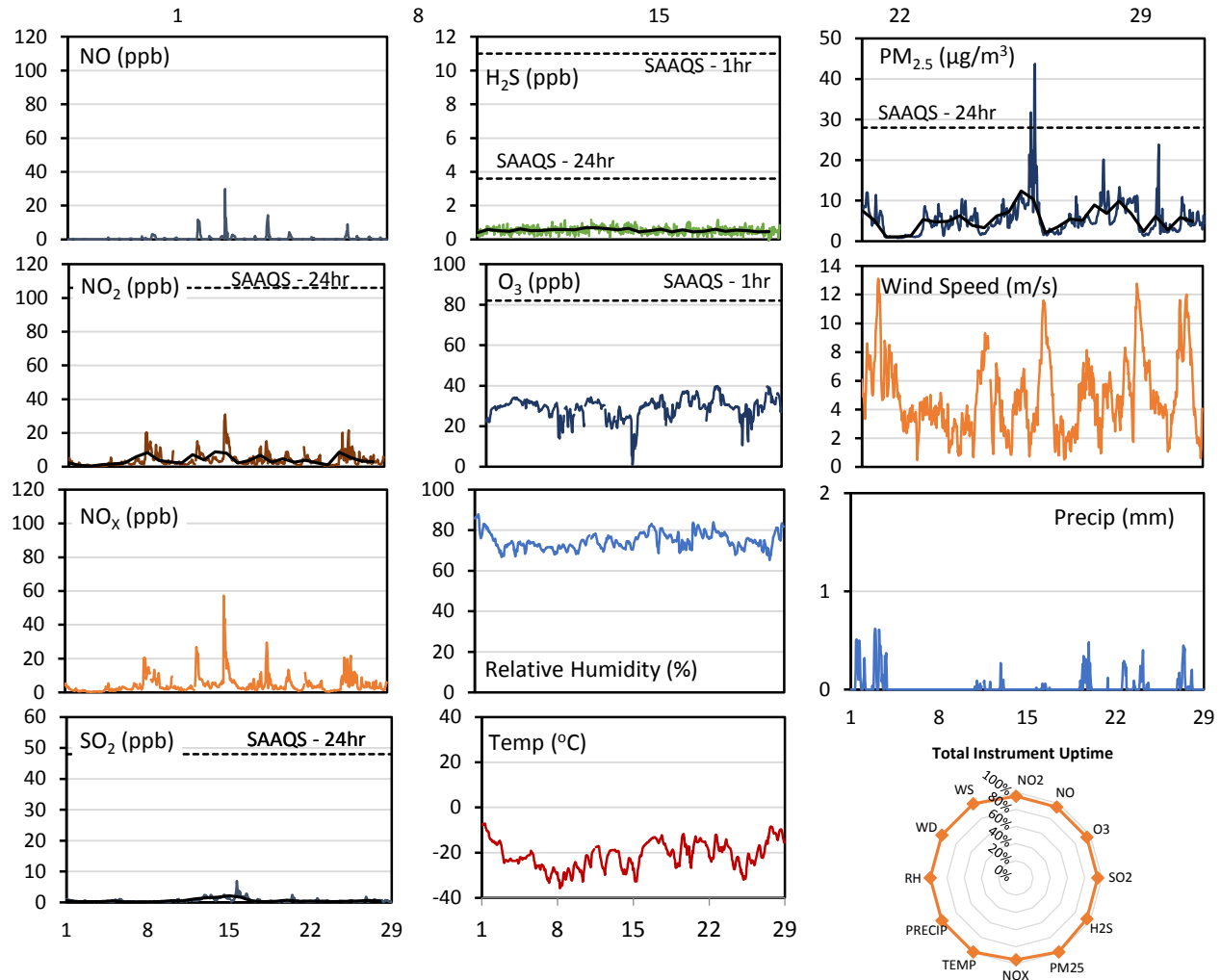
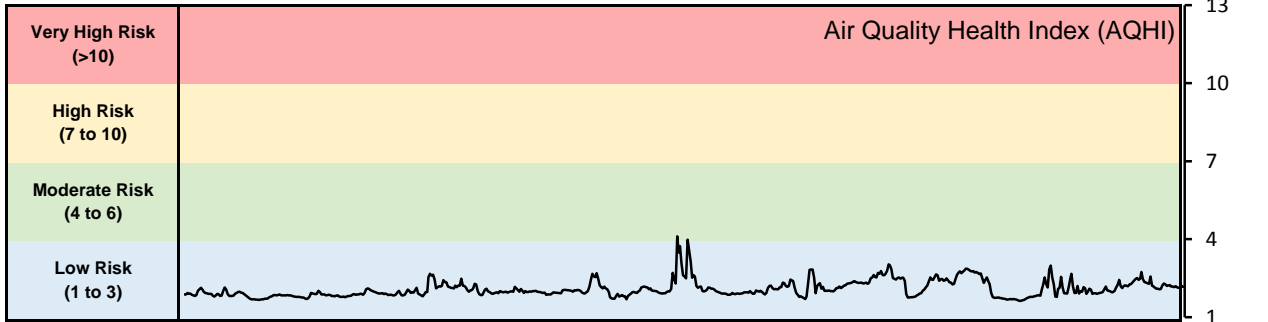


GPAZ Pense Station - February 2019 Summary Report

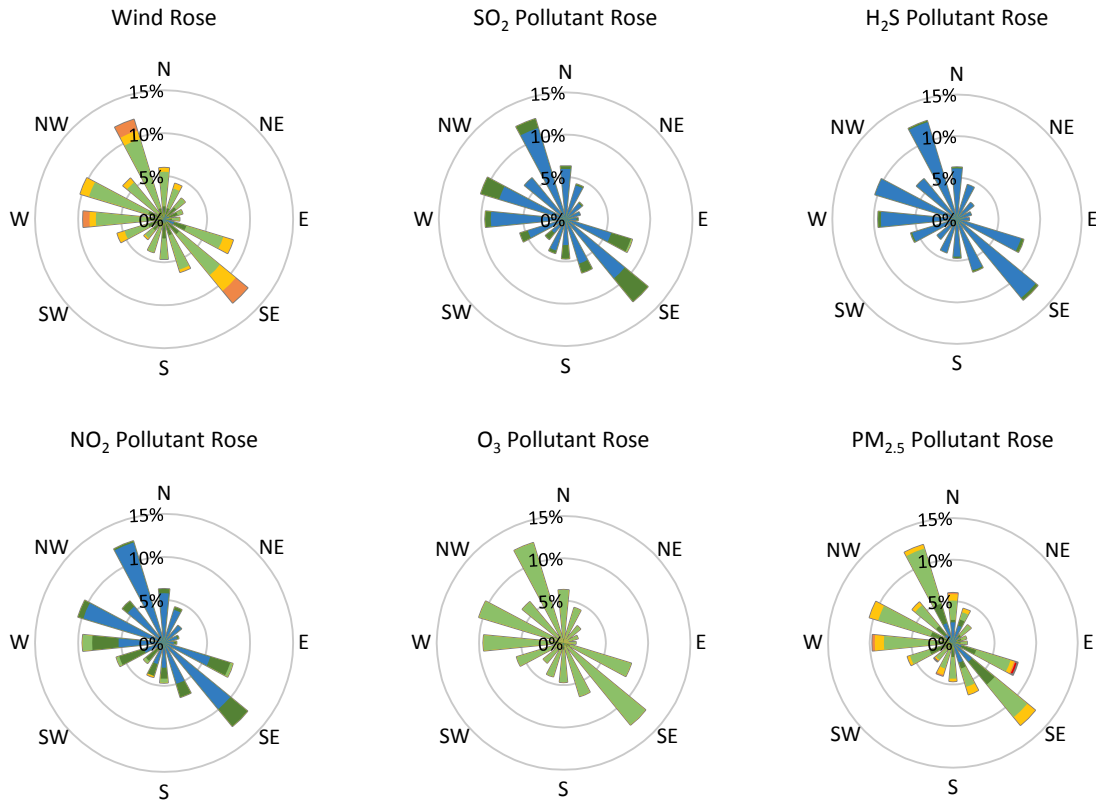
Pollutants		Month Records		24-Hour Records				1-Hour Records			
Name	Conc. Unit	Avg. Conc.	Total Uptime	Maximum		SAAQS Standard	Exceed Days	Maximum		SAAQS Standard	Exceed Hours
				Conc.	Time			Conc.	Time		
NO	ppb	0.6	95%	3.2	Feb-14	-	-	29.9	Feb-14 19:00	-	-
NO ₂	ppb	3.9	95%	8.9	Feb-14	106	0	30.9	Feb-14 21:00	159	0
NO _x	ppb	4.5	95%	12.1	Feb-14	-	-	57.3	Feb-14 19:00	-	-
SO ₂	ppb	0.6	95%	2.1	Feb-15	48	0	6.9	Feb-15 16:00	172	0
H ₂ S	ppb	0.5	95%	0.7	Feb-12	3.6	0	1.2	Feb-11 13:00	11	0
O ₃	ppb	28.9	95%	34.0	Feb-20	-	-	39.8	Feb-22 22:00	82	0
PM _{2.5}	µg/m ³	5.4	100%	12.4	Feb-14	28	0	43.7	Feb-15 03:00	-	-

SAAQS: Saskatchewan Ambient Air Quality Standards



* colored lines indicate 1-hr concentration data for all parameters; solid black lines indicate 24-hr concentrations for PM_{2.5}, NO₂, SO₂, and H₂S

GPAZ Pense Station - February 2019 Summary Report



Parameters	Unit	Color Code for Wind Speed and Pollution Concentration Class						
Wind Speed	m/s	0.3 ≤ WS < 1.4	1.4 ≤ WS < 3.1	3.1 ≤ WS < 7.8	7.8 ≤ WS < 10.8	10.8 ≤ WS < 13.6	WS ≥ 13.6	
SO ₂	ppb	0 ≤ C < 1	1 ≤ C < 5	5 ≤ C < 10	10 ≤ C < 57	57 ≤ C < 172	C ≥ 172	
NO ₂	ppb	0 ≤ C < 5	5 ≤ C < 15	15 ≤ C < 30	30 ≤ C < 100	100 ≤ C < 212	C ≥ 212	
H ₂ S	ppb	0 ≤ C < 1	1 ≤ C < 3.6	3.6 ≤ C < 5	5 ≤ C < 8	8 ≤ C < 10.8	C ≥ 10.8	
O ₃	ppb	0 ≤ C < 10	10 ≤ C < 20	20 ≤ C < 40	40 ≤ C < 60	60 ≤ C < 82	C ≥ 82	
PM _{2.5}	µg/m ³	0 ≤ C < 2	2 ≤ C < 4	4 ≤ C < 10	10 ≤ C < 20	20 ≤ C < 30	C ≥ 30	

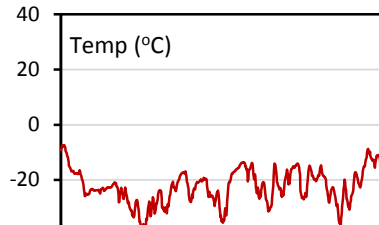
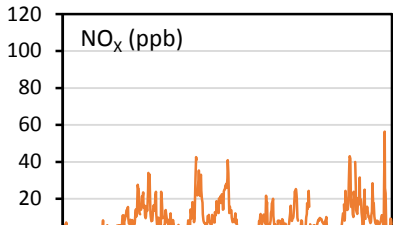
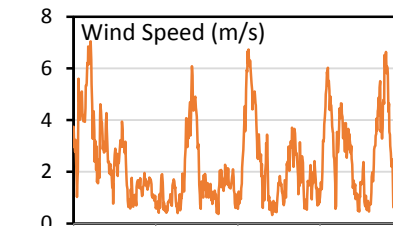
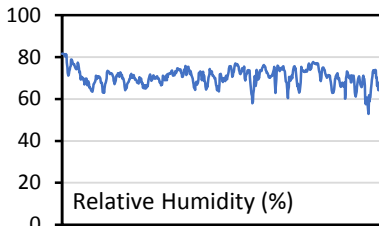
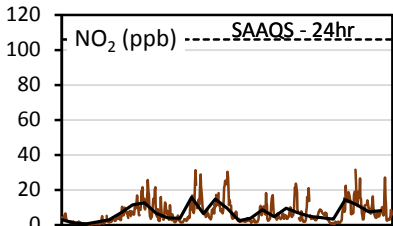
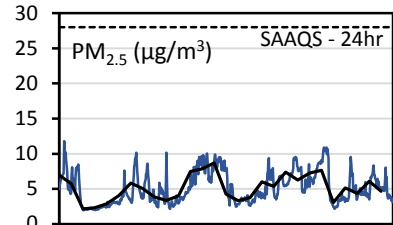
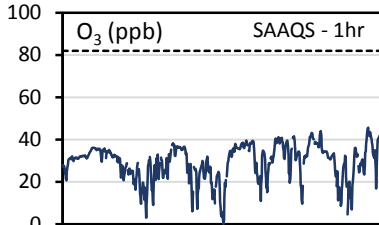
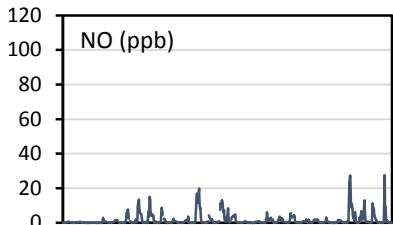
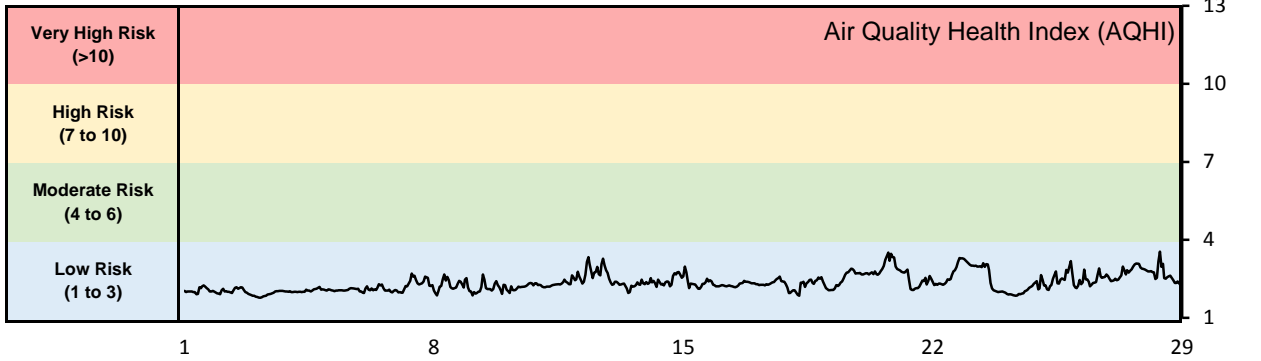
Monthly Update

- Achieved >99.6% of scheduled uptime for all parameters
- Downtime of 4% due to routine daily internal zeroes and spans

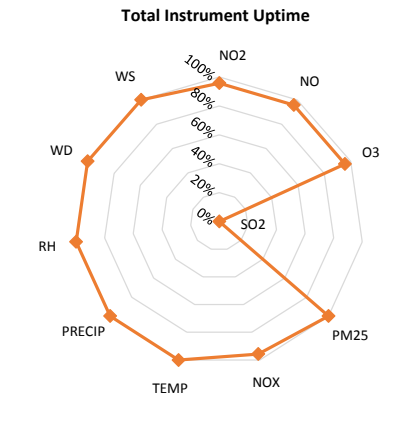
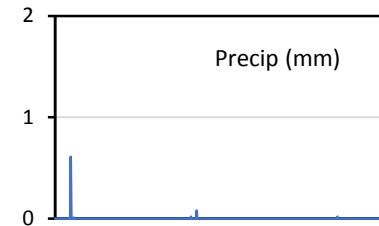
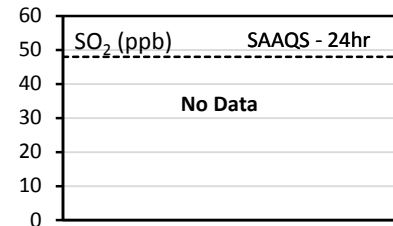
GPAZ East Regina Station - February 2019 Summary Report

Pollutants		Month Records		24-Hour Records				1-Hour Records			
Name	Conc. Unit	Avg. Conc.	Total Uptime	Maximum		SAAQS Standard	Exceed Days	Maximum		SAAQS Standard	Exceed Hours
				Conc.	Time			Conc.	Time		
NO	ppb	1.7	96%	6.6	Feb-25	-	-	27.6	Feb-28 09:00	-	-
NO ₂	ppb	6.9	96%	15.8	Feb-12	106	0	31.6	Feb-25 21:00	159	0
NO _x	ppb	9.0	96%	22.2	Feb-12	-	-	56.4	Feb-28 09:00	-	-
SO ₂	ppb	N/A	0%	N/A	N/A	48	N/A	N/A	N/A	172	0
O ₃	ppb	29.3	96%	37.6	Feb-23	-	-	45.7	Feb-27 16:00	82	0
PM _{2.5}	µg/m ³	5.2	100%	8.7	Feb-14	28	0	11.8	Feb-01 10:00	-	-

SAAQS: Saskatchewan Ambient Air Quality Standards

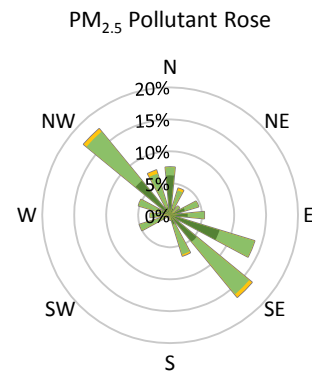
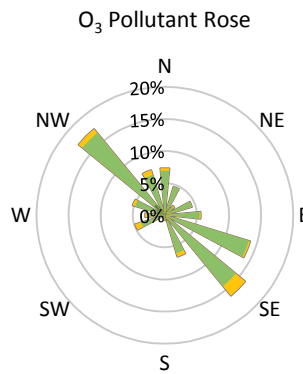
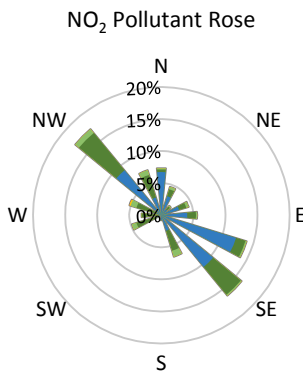
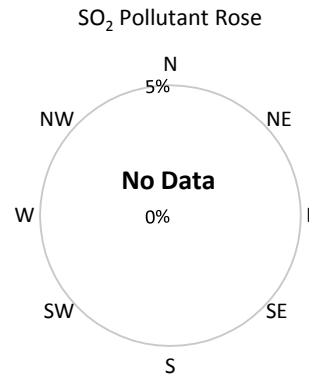
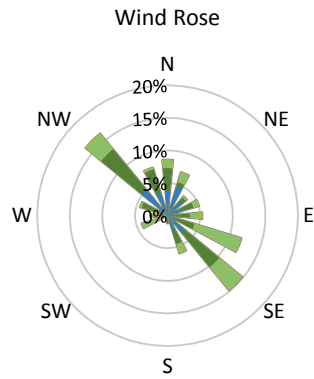


1 8 15 22 29



* colored lines indicate 1-hr concentration data for all parameters; solid black lines indicate 24-hr concentrations for PM_{2.5}, NO₂, and SO₂

GPAZ East Regina Station - February 2019 Summary Report



Parameters	Unit	Color Code for Wind Speed and Pollution Concentration Class						
		0.3 ≤ WS < 1.4	1.4 ≤ WS < 3.1	3.1 ≤ WS < 7.8	7.8 ≤ WS < 10.8	10.8 ≤ WS < 13.6	WS ≥ 13.6	
Wind Speed	m/s							
SO ₂	ppb	0 ≤ C < 1	1 ≤ C < 5	5 ≤ C < 10	10 ≤ C < 57	57 ≤ C < 172	C ≥ 172	
NO ₂	ppb	0 ≤ C < 5	5 ≤ C < 15	15 ≤ C < 30	30 ≤ C < 100	100 ≤ C < 212	C ≥ 212	
O ₃	ppb	0 ≤ C < 10	10 ≤ C < 20	20 ≤ C < 40	40 ≤ C < 60	60 ≤ C < 82	C ≥ 82	
PM _{2.5}	µg/m ³	0 ≤ C < 2	2 ≤ C < 4	4 ≤ C < 10	10 ≤ C < 20	20 ≤ C < 30	C ≥ 30	

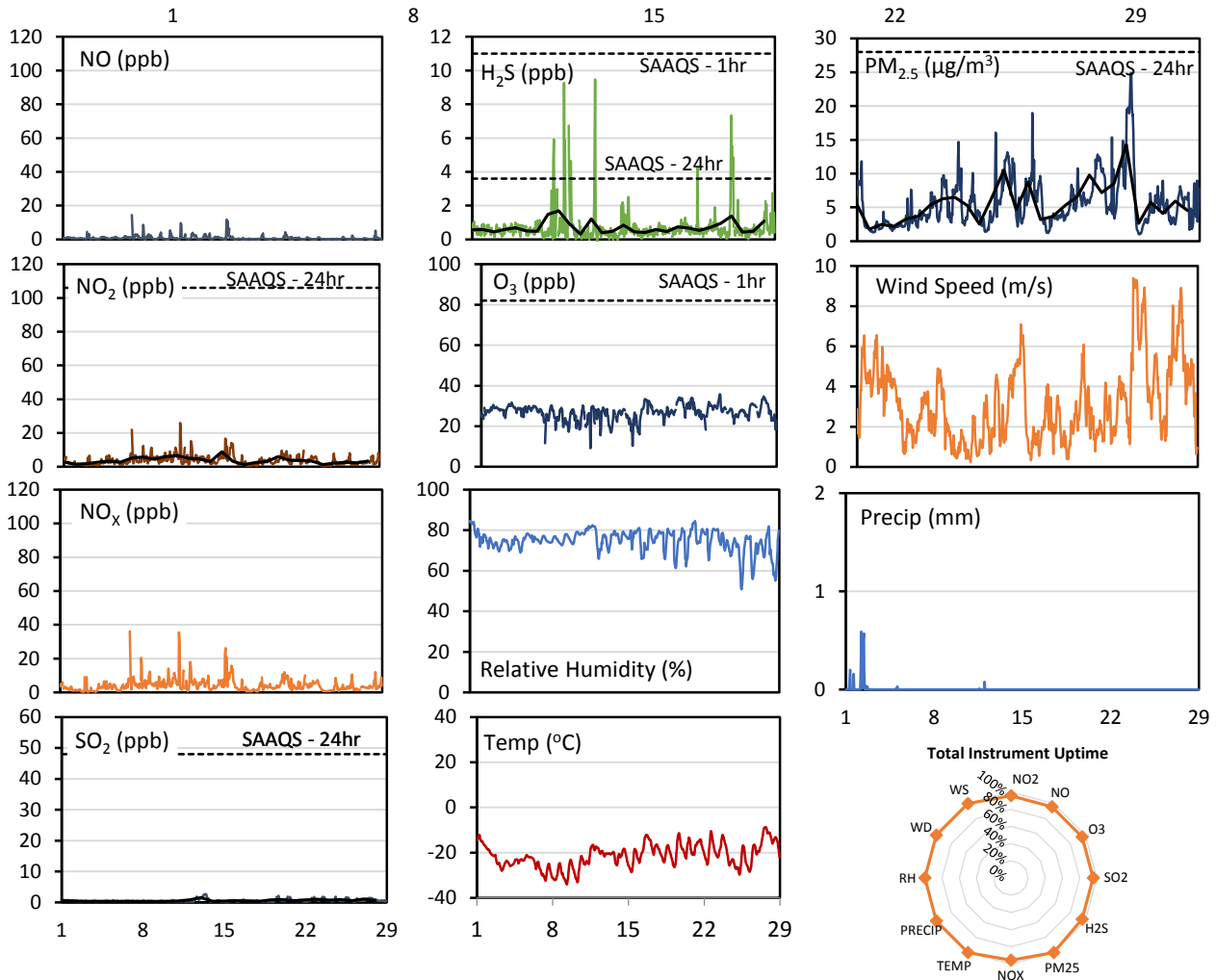
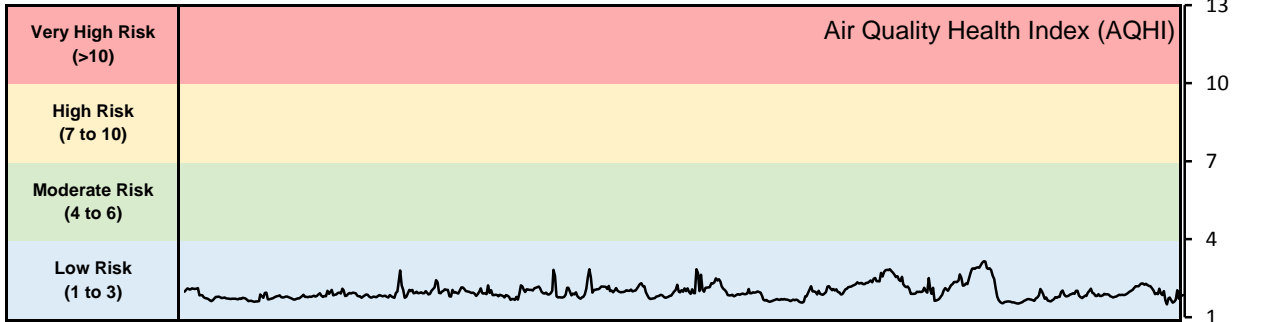
Monthly Update

- Achieved 100% of scheduled uptime for all parameters except for SO₂ (0%)
- Downtime of 4% due to routine daily internal zeroes and spans
- SO₂ analyzer was away for servicing

GPAZ Yorkton Station - February 2019 Summary Report

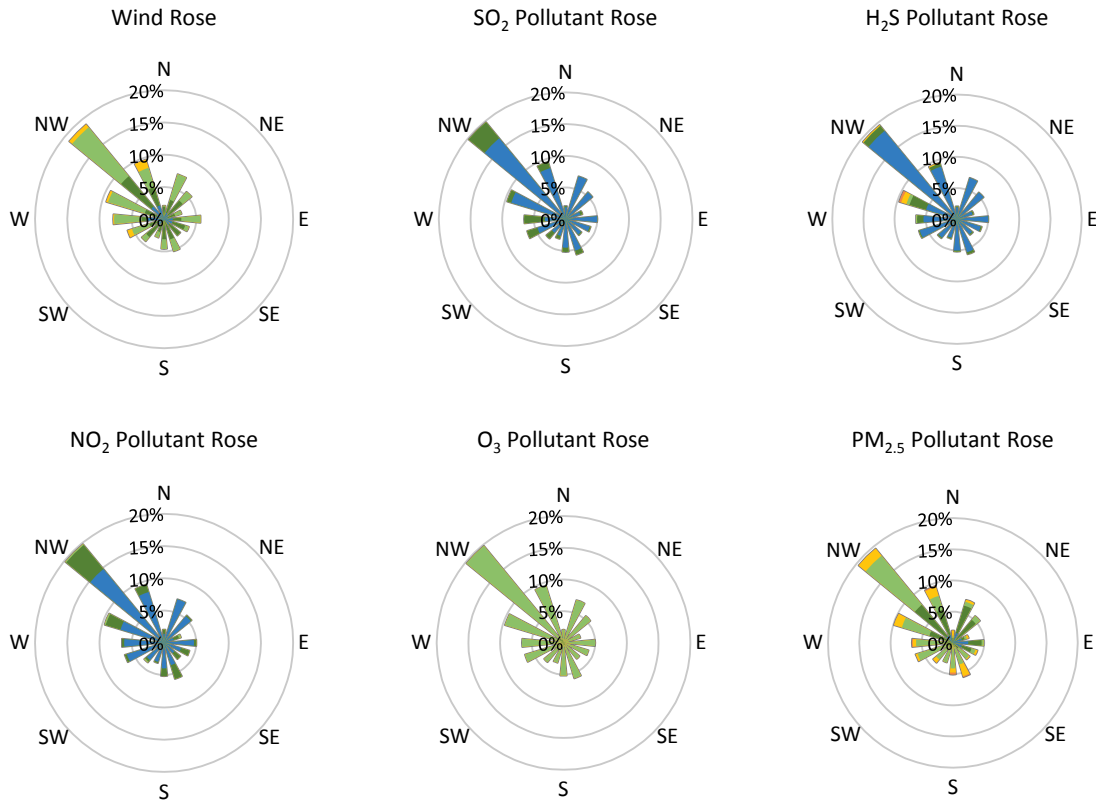
Pollutants		Month Records		24-Hour Records				1-Hour Records			
Name	Conc. Unit	Avg. Conc.	Total Uptime	Maximum		SAAQS Standard	Exceed Days	Maximum		SAAQS Standard	Exceed Hours
				Conc.	Time			Conc.	Time		
NO	ppb	0.9	96%	2.3	Feb-07	-	-	14.4	Feb-07 01:00	-	-
NO ₂	ppb	3.6	96%	8.8	Feb-15	106	0	25.9	Feb-11 08:00	159	0
NO _x	ppb	4.1	96%	9.8	Feb-15	-	-	36.2	Feb-07 01:00	-	-
SO ₂	ppb	0.6	96%	1.5	Feb-13	48	0	2.7	Feb-13 10:00	172	0
H ₂ S	ppb	0.7	96%	1.7	Feb-09	3.6	0	9.5	Feb-12 09:00	11	0
O ₃	ppb	26.9	96%	30.5	Feb-20	-	-	35.8	Feb-23 15:00	82	0
PM _{2.5}	µg/m ³	5.6	100%	14.3	Feb-23	28	0	24.9	Feb-23 10:00	-	-

SAAQS: Saskatchewan Ambient Air Quality Standards



* colored lines indicate 1-hr concentration data for all parameters; solid black lines indicate 24-hr concentrations for PM_{2.5}, NO₂, SO₂, and H₂S

GPAZ Yorkton Station - February 2019 Summary Report



Parameters	Unit	Color Code for Wind Speed and Pollution Concentration Class						
		$0.3 \leq WS < 1.4$	$1.4 \leq WS < 3.1$	$3.1 \leq WS < 7.8$	$7.8 \leq WS < 10.8$	$10.8 \leq WS < 13.6$	$WS \geq 13.6$	
SO ₂	ppb	$0 \leq C < 1$	$1 \leq C < 5$	$5 \leq C < 10$	$10 \leq C < 57$	$57 \leq C < 172$	$C \geq 172$	
NO ₂	ppb	$0 \leq C < 5$	$5 \leq C < 15$	$15 \leq C < 30$	$30 \leq C < 100$	$100 \leq C < 212$	$C \geq 212$	
H ₂ S	ppb	$0 \leq C < 1$	$1 \leq C < 3.6$	$3.6 \leq C < 5$	$5 \leq C < 8$	$8 \leq C < 10.8$	$C \geq 10.8$	
O ₃	ppb	$0 \leq C < 10$	$10 \leq C < 20$	$20 \leq C < 40$	$40 \leq C < 60$	$60 \leq C < 82$	$C \geq 82$	
PM _{2.5}	$\mu\text{g}/\text{m}^3$	$0 \leq C < 2$	$2 \leq C < 4$	$4 \leq C < 10$	$10 \leq C < 20$	$20 \leq C < 30$	$C \geq 30$	

Monthly Update

- Achieved 100% of scheduled uptime for all parameters
- Downtime of 4% due to routine daily internal zeroes and spans