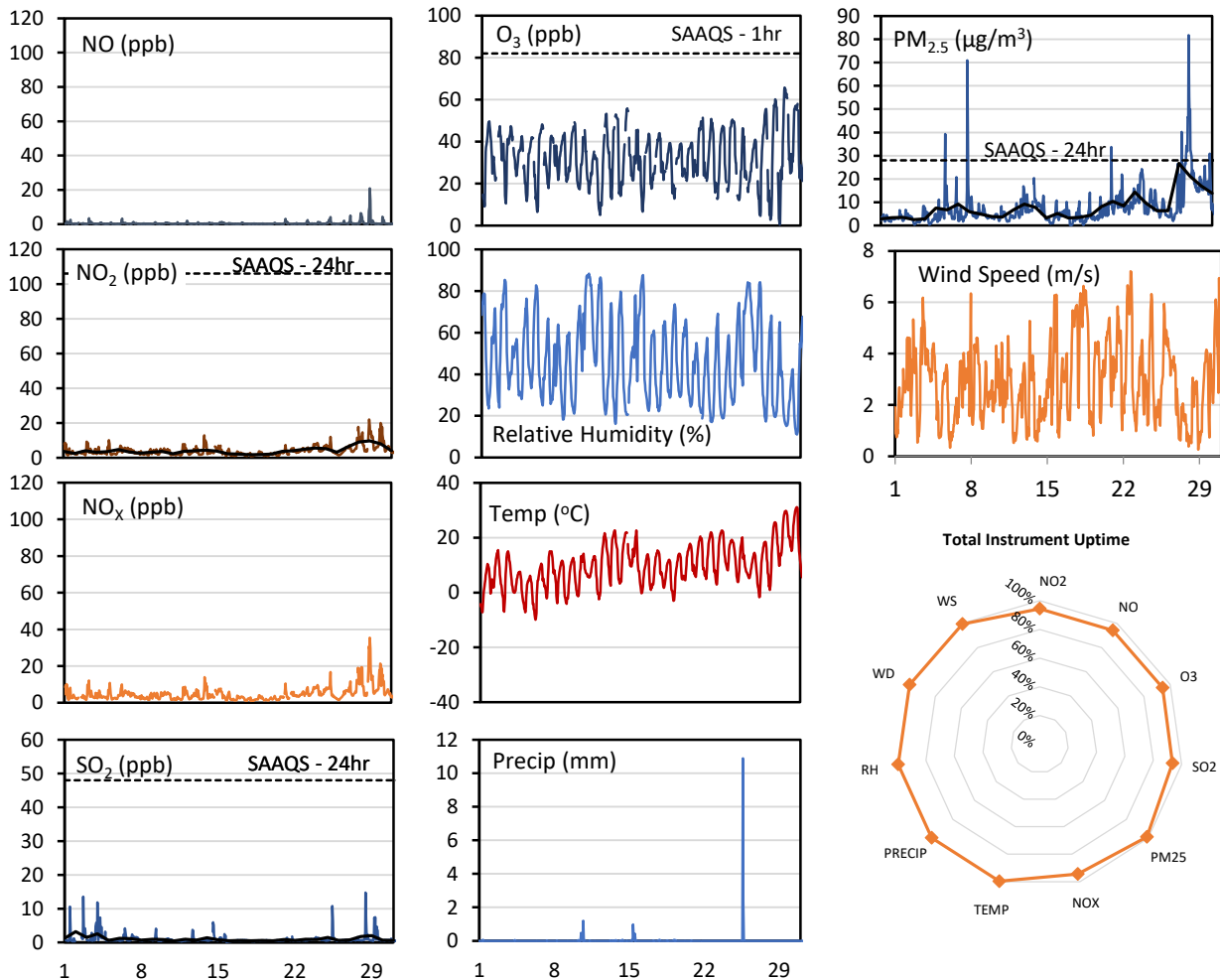
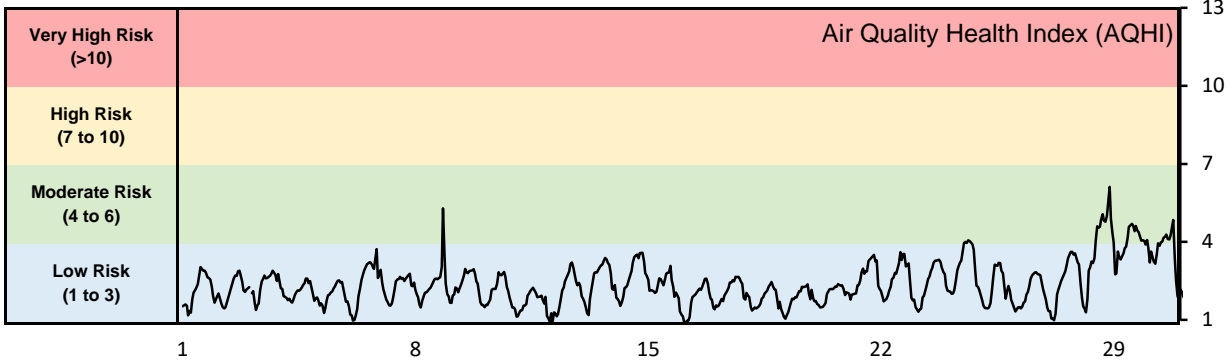


GPAZ East Regina Station - May 2019 Summary Report

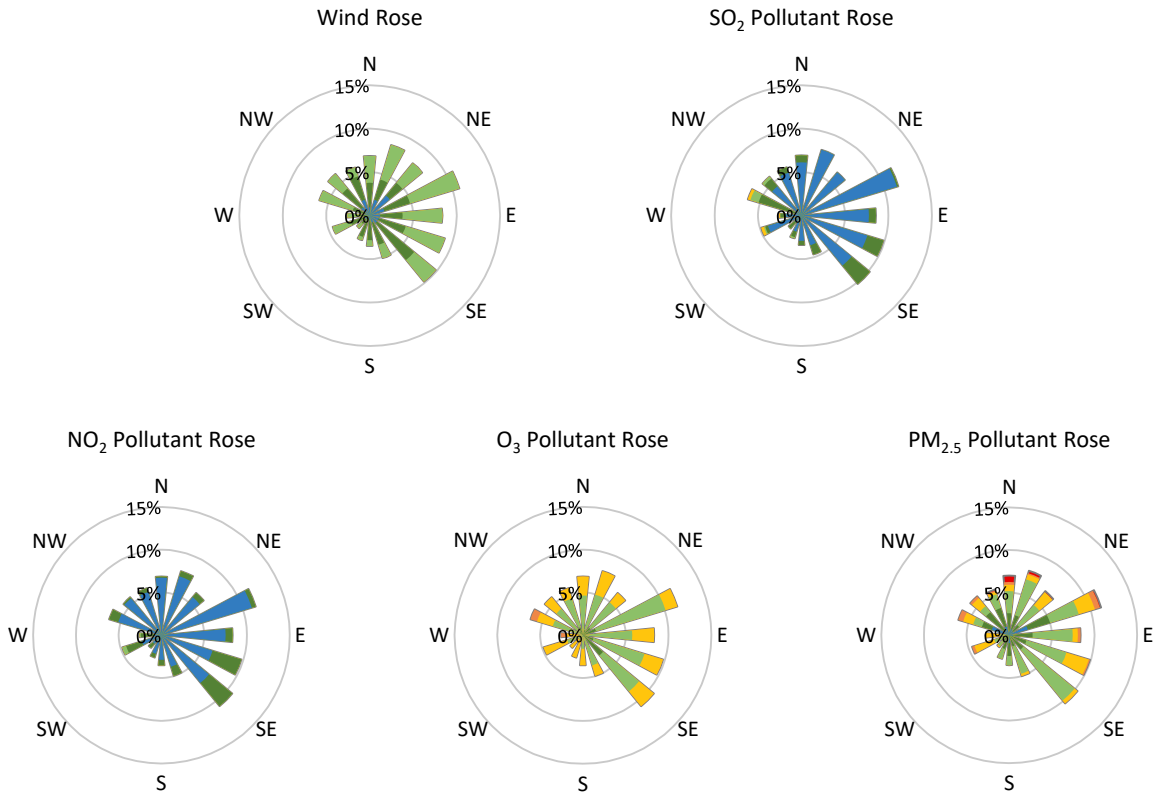
Pollutants		Month Records		24-Hour Records				1-Hour Records			
Name	Conc. Unit	Avg. Conc.	Total Uptime	Maximum		SAAQS Standard	Exceed Days	Maximum		SAAQS Standard	Exceed Hours
				Conc.	Time			Conc.	Time		
NO	ppb	0.5	94%	2.5	May-29	-	-	20.9	May-29 01:00	-	-
NO ₂	ppb	4.1	94%	9.8	May-29	106	0	22.0	May-28 23:00	159	0
NO _x	ppb	4.7	94%	12.7	May-29	-	-	35.4	May-29 01:00	-	-
SO ₂	ppb	1.0	94%	3.2	May-02	48	0	14.7	May-28 11:00	172	0
O ₃	ppb	32.2	94%	41.1	May-30	-	-	65.8	May-29 12:00	82	0
PM _{2.5}	µg/m ³	7.8	99%	26.7	May-28	28	0	81.8	May-28 21:00	-	-

SAAQS: Saskatchewan Ambient Air Quality Standards



* colored lines indicate 1-hr concentration data for all parameters; solid black lines indicate 24-hr concentrations for PM_{2.5}, NO₂, and SO₂

GPAZ East Regina Station - May 2019 Summary Report



Parameters	Unit	Color Code for Wind Speed and Pollution Concentration Class						
		0.3 ≤ WS < 1.4	1.4 ≤ WS < 3.1	3.1 ≤ WS < 7.8	7.8 ≤ WS < 10.8	10.8 ≤ WS < 13.6	WS ≥ 13.6	
Wind Speed	m/s							
SO ₂	ppb	0 ≤ C < 1	1 ≤ C < 5	5 ≤ C < 10	10 ≤ C < 57	57 ≤ C < 172	C ≥ 172	
NO ₂	ppb	0 ≤ C < 5	5 ≤ C < 15	15 ≤ C < 30	30 ≤ C < 100	100 ≤ C < 212	C ≥ 212	
O ₃	ppb	0 ≤ C < 10	10 ≤ C < 20	20 ≤ C < 40	40 ≤ C < 60	60 ≤ C < 82	C ≥ 82	
PM _{2.5}	µg/m ³	0 ≤ C < 2	2 ≤ C < 4	4 ≤ C < 10	10 ≤ C < 20	20 ≤ C < 30	C ≥ 30	

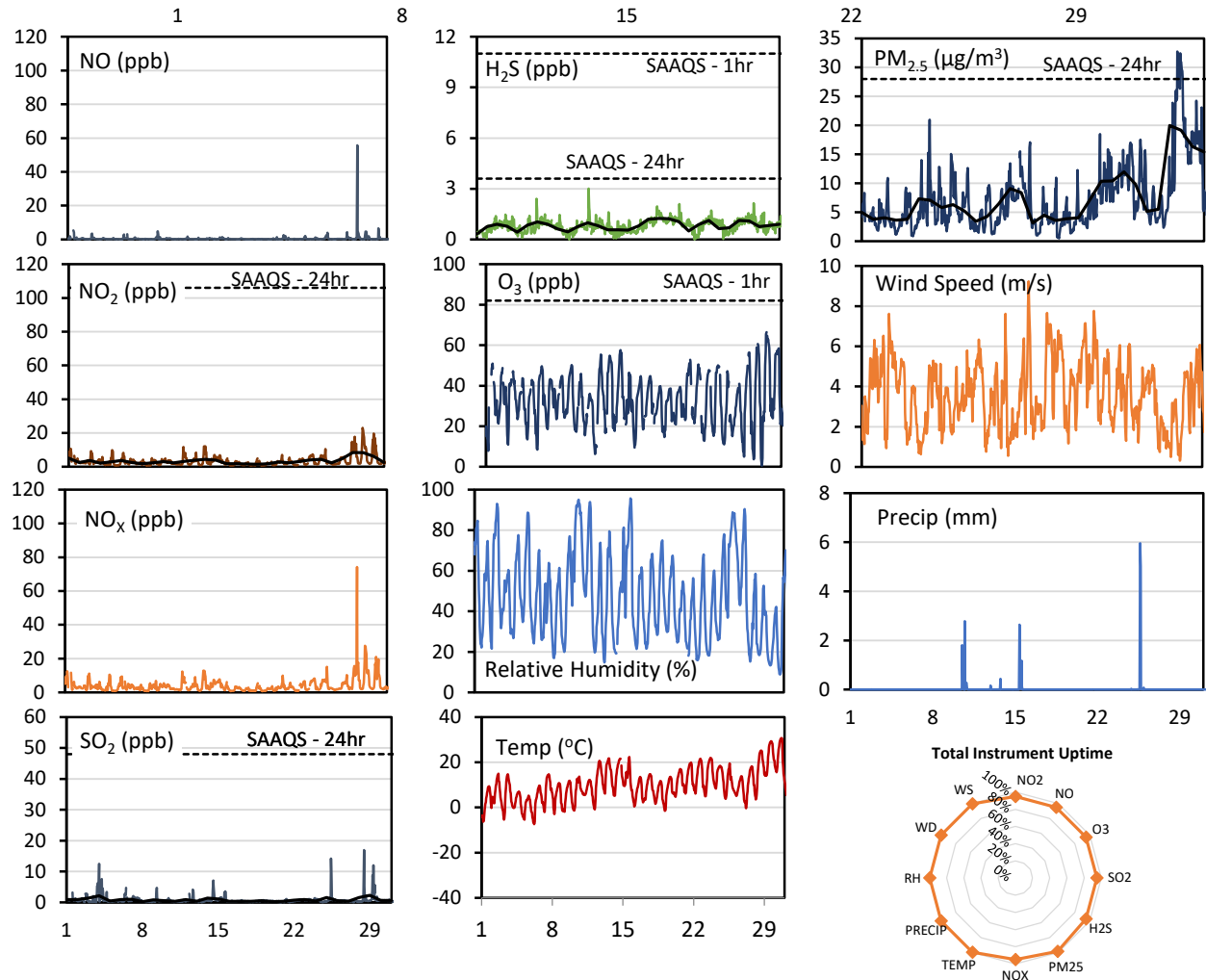
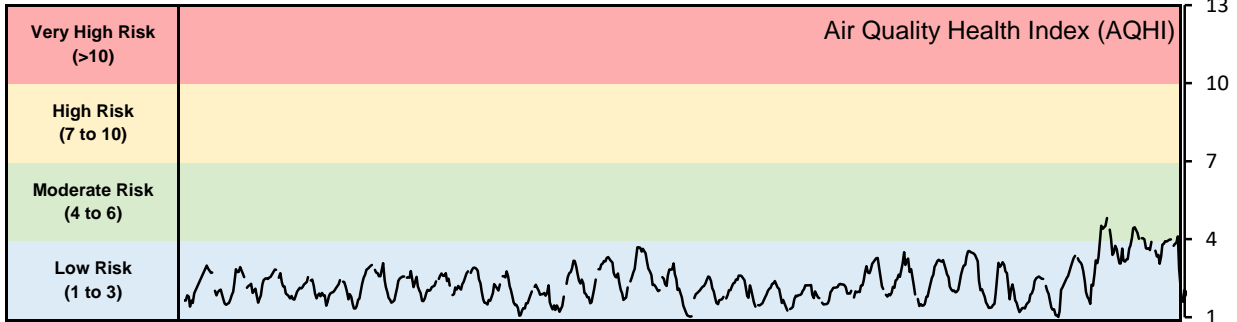
Monthly Update

- Achieved >97.8% of scheduled uptime for all parameters
- Downtime of 4% due to routine daily internal zeroes and spans
- SO₂ analyzer was calibrated on May 2
- airpointer® was calibrated and decommissioned on June 5

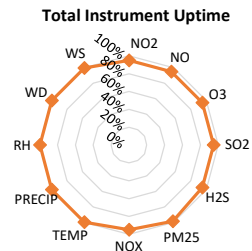
GPAZ Regina Station - May 2019 Summary Report

Pollutants		Month Records		24-Hour Records				1-Hour Records			
Name	Conc. Unit	Avg. Conc.	Total Uptime	Maximum		SAAQS Standard	Exceed Days	Maximum		SAAQS Standard	Exceed Hours
				Conc.	Time			Conc.	Time		
NO	ppb	0.5	95%	3.5	May-28	-	-	55.7	May-28 05:00	-	-
NO ₂	ppb	3.3	95%	8.3	May-29	106	0	23.0	May-28 23:00	159	0
NO _x	ppb	4.0	95%	12.2	May-28	-	-	74.2	May-28 05:00	-	-
SO ₂	ppb	0.8	95%	2.3	May-29	48	0	16.9	May-28 11:00	172	0
H ₂ S	ppb	0.8	95%	1.2	May-19	3.6	0	3.0	May-12 02:00	11	0
O ₃	ppb	32.5	95%	40.6	May-30	-	-	66.4	May-29 12:00	82	0
PM _{2.5}	µg/m ³	7.6	99%	20.0	May-28	28	0	38.9	May-31 09:00	-	-

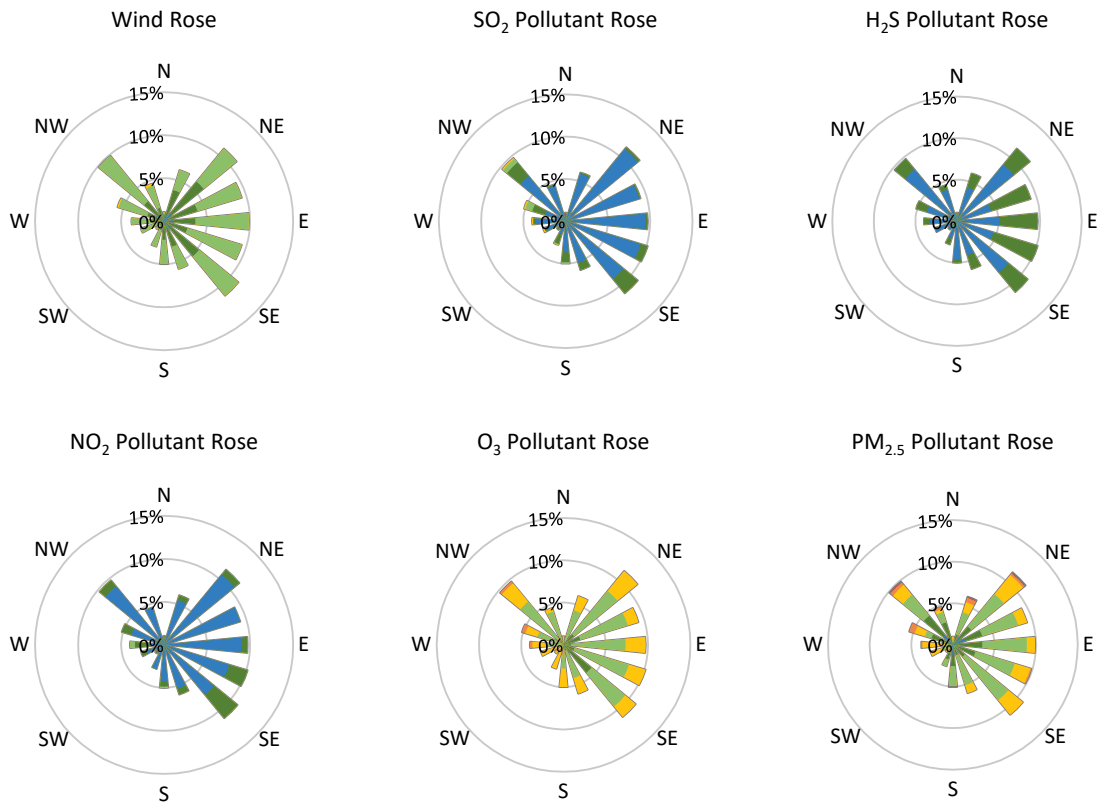
SAAQS: Saskatchewan Ambient Air Quality Standards



* colored lines indicate 1-hr concentration data for all parameters; solid black lines indicate 24-hr concentrations for PM_{2.5}, NO₂, SO₂, and H₂S



GPAZ Regina Station - May 2019 Summary Report



Parameters	Unit	Color Code for Wind Speed and Pollution Concentration Class						
Wind Speed	m/s	$0.3 \leq WS < 1.4$	$1.4 \leq WS < 3.1$	$3.1 \leq WS < 7.8$	$7.8 \leq WS < 10.8$	$10.8 \leq WS < 13.6$	$WS \geq 13.6$	
SO ₂	ppb	$0 \leq C < 1$	$1 \leq C < 5$	$5 \leq C < 10$	$10 \leq C < 57$	$57 \leq C < 172$	$C \geq 172$	
NO ₂	ppb	$0 \leq C < 5$	$5 \leq C < 15$	$15 \leq C < 30$	$30 \leq C < 100$	$100 \leq C < 212$	$C \geq 212$	
H ₂ S	ppb	$0 \leq C < 1$	$1 \leq C < 3.6$	$3.6 \leq C < 5$	$5 \leq C < 8$	$8 \leq C < 10.8$	$C \geq 10.8$	
O ₃	ppb	$0 \leq C < 10$	$10 \leq C < 20$	$20 \leq C < 40$	$40 \leq C < 60$	$60 \leq C < 82$	$C \geq 82$	
PM _{2.5}	µg/m ³	$0 \leq C < 2$	$2 \leq C < 4$	$4 \leq C < 10$	$10 \leq C < 20$	$20 \leq C < 30$	$C \geq 30$	

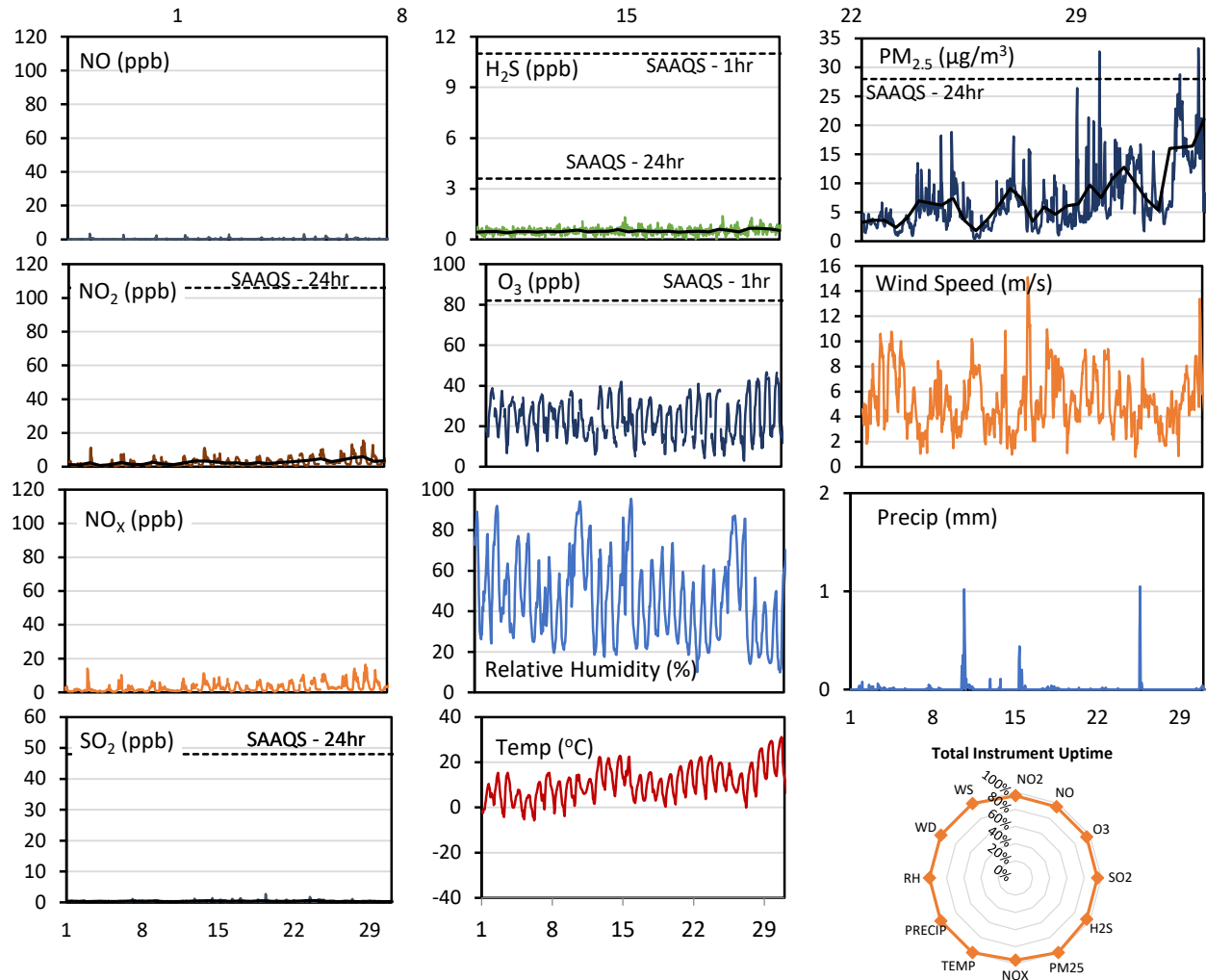
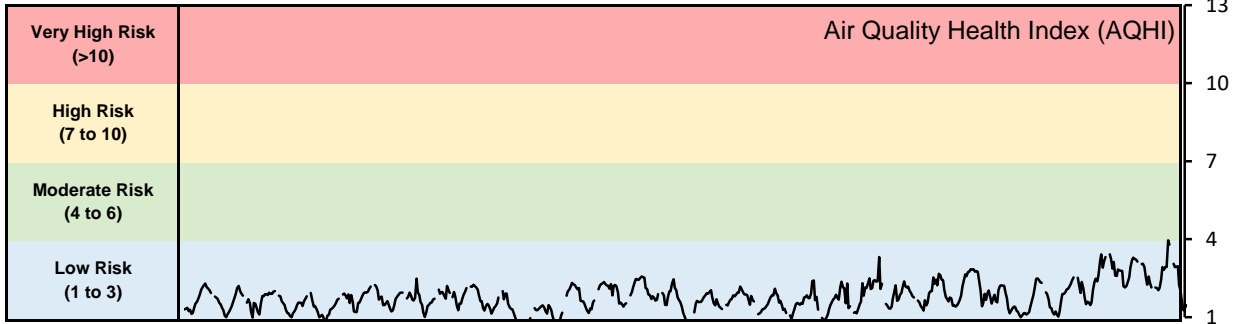
Monthly Update

- Achieved >98.5% of scheduled uptime for all parameters
- Downtime of 4% due to routine daily internal zeroes and spans
- Station was commissioned on April 29, 2019 and is located at the same site as the GPAZ East Regina Station (airpointer®) which is set to be decommissioned
- Station was calibrated on April 30

GPAZ Pense Station - May 2019 Summary Report

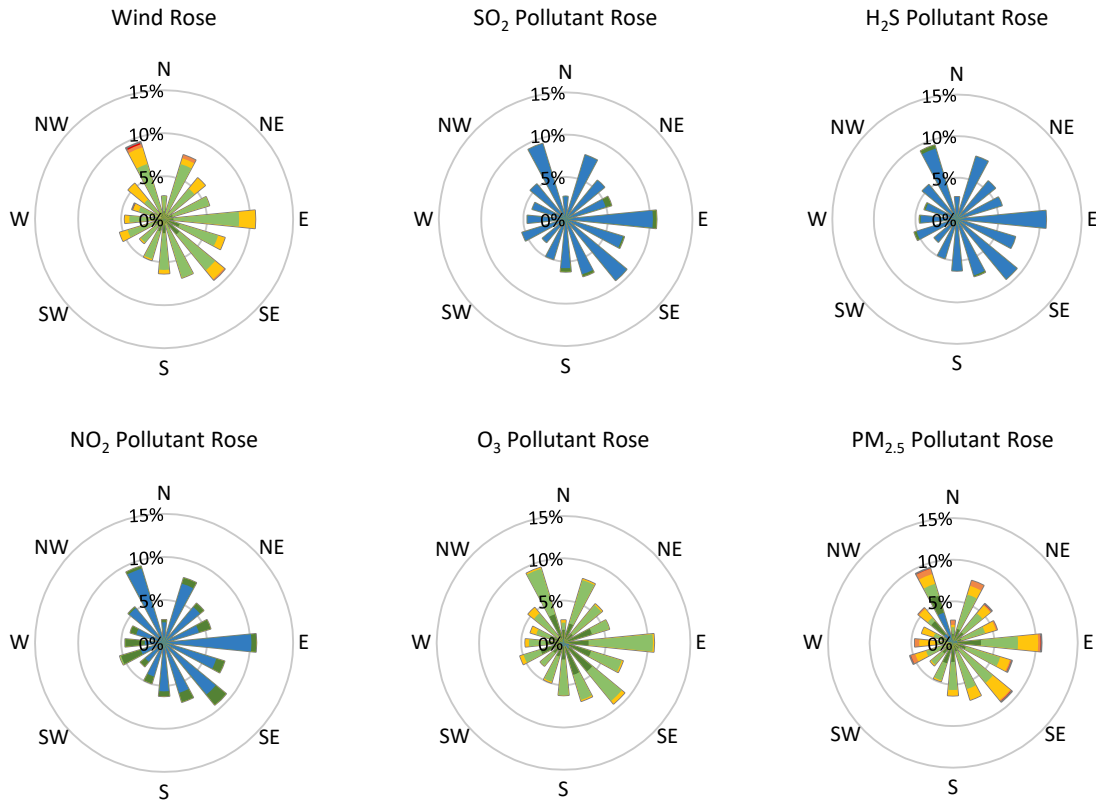
Pollutants		Month Records		24-Hour Records				1-Hour Records			
Name	Conc. Unit	Avg. Conc.	Total Uptime	Maximum		SAAQS Standard	Exceed Days	Maximum		SAAQS Standard	Exceed Hours
				Conc.	Time			Conc.	Time		
NO	ppb	0.2	96%	0.6	May-25	-	-	3.4	May-03 02:00	-	-
NO ₂	ppb	2.6	96%	5.9	May-29	106	0	15.5	May-29 00:00	159	0
NO _x	ppb	2.9	96%	6.2	May-29	-	-	16.4	May-29 00:00	-	-
SO ₂	ppb	0.4	95%	0.6	May-24	48	0	2.7	May-19 09:00	172	0
H ₂ S	ppb	0.5	96%	0.7	May-29	3.6	0	1.4	May-25 09:00	11	0
O ₃	ppb	23.6	96%	28.9	May-30	-	-	46.7	May-29 12:00	82	0
PM _{2.5}	µg/m ³	7.6	100%	21.0	May-31	28	0	69.3	May-31 22:00	-	-

SAAQS: Saskatchewan Ambient Air Quality Standards



* colored lines indicate 1-hr concentration data for all parameters; solid black lines indicate 24-hr concentrations for PM_{2.5}, NO₂, SO₂, and H₂S

GPAZ Pense Station - May 2019 Summary Report



Parameters	Unit	Color Code for Wind Speed and Pollution Concentration Class						
		0.3 ≤ WS < 1.4	1.4 ≤ WS < 3.1	3.1 ≤ WS < 7.8	7.8 ≤ WS < 10.8	10.8 ≤ WS < 13.6	WS ≥ 13.6	
SO ₂	ppb	0 ≤ C < 1	1 ≤ C < 5	5 ≤ C < 10	10 ≤ C < 57	57 ≤ C < 172	C ≥ 172	
NO ₂	ppb	0 ≤ C < 5	5 ≤ C < 15	15 ≤ C < 30	30 ≤ C < 100	100 ≤ C < 212	C ≥ 212	
H ₂ S	ppb	0 ≤ C < 1	1 ≤ C < 3.6	3.6 ≤ C < 5	5 ≤ C < 8	8 ≤ C < 10.8	C ≥ 10.8	
O ₃	ppb	0 ≤ C < 10	10 ≤ C < 20	20 ≤ C < 40	40 ≤ C < 60	60 ≤ C < 82	C ≥ 82	
PM _{2.5}	µg/m ³	0 ≤ C < 2	2 ≤ C < 4	4 ≤ C < 10	10 ≤ C < 20	20 ≤ C < 30	C ≥ 30	

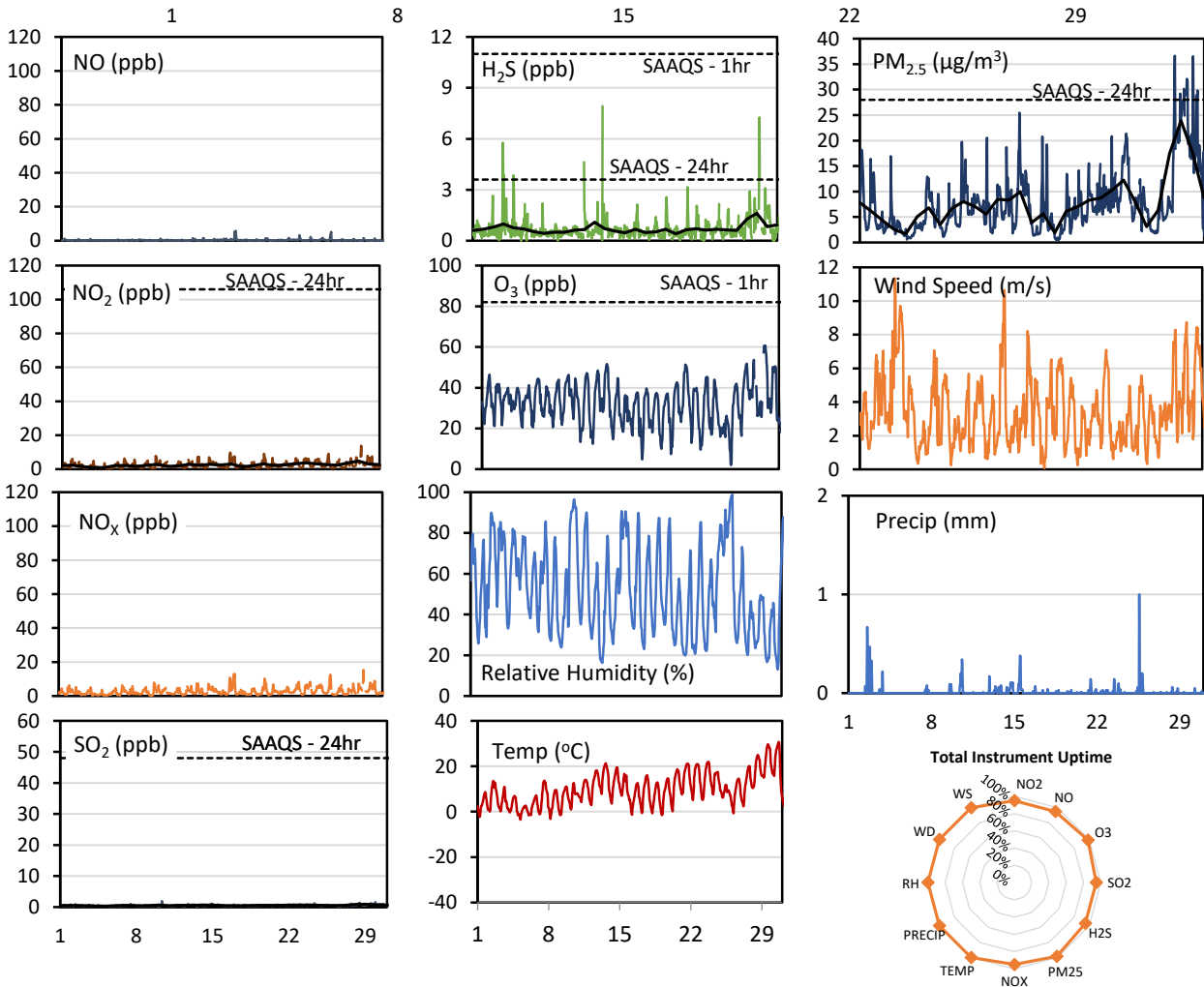
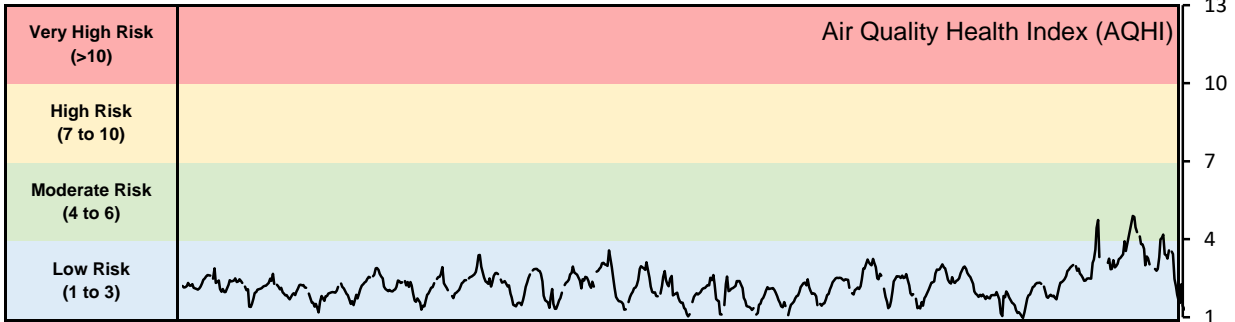
Monthly Update

- Achieved 100% of scheduled uptime for all parameters
- Downtime of 4% due to routine daily internal zeroes and spans

GPAZ Yorkton Station - May 2019 Summary Report

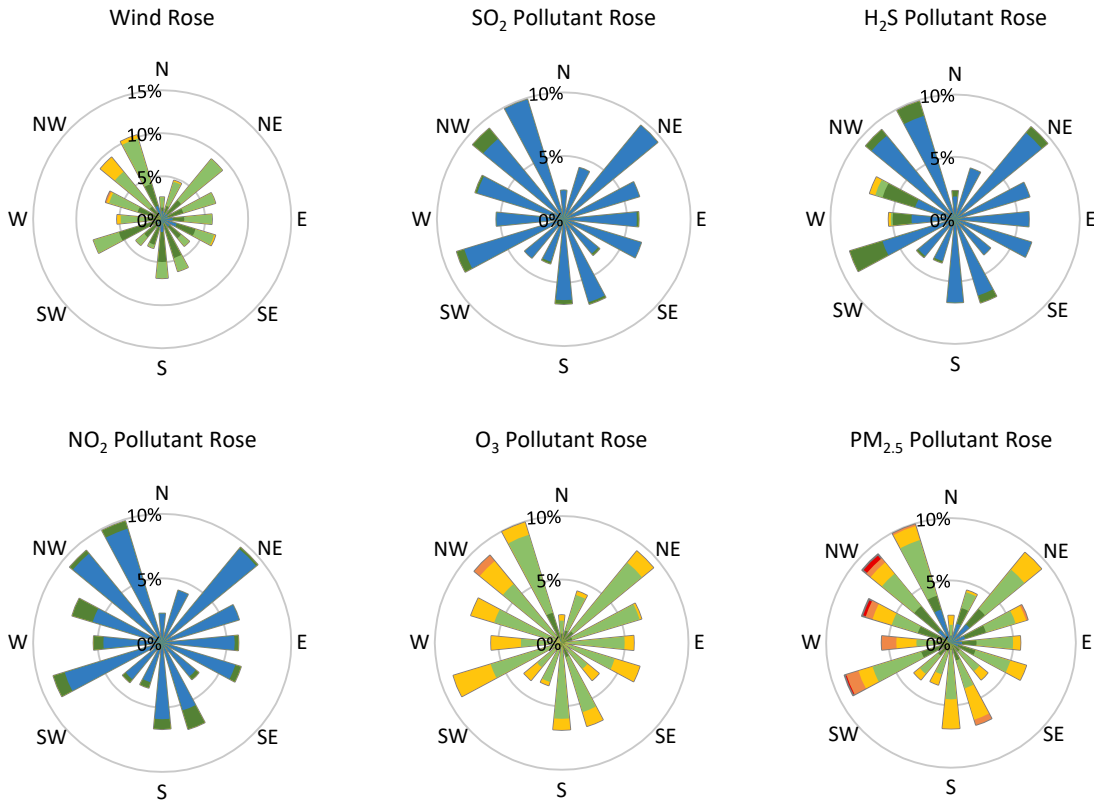
Pollutants		Month Records		24-Hour Records				1-Hour Records			
Name	Conc. Unit	Avg. Conc.	Total Uptime	Maximum		SAAQS Standard	Exceed Days	Maximum		SAAQS Standard	Exceed Hours
				Conc.	Time			Conc.	Time		
NO	ppb	0.3	95%	1.1	May-17	-	-	5.8	May-17 07:00	-	-
NO ₂	ppb	2.4	95%	4.7	May-29	106	0	13.8	May-29 06:00	159	0
NO _x	ppb	2.7	95%	5.0	May-29	-	-	15.4	May-29 06:00	-	-
SO ₂	ppb	0.5	95%	0.9	May-29	48	0	1.9	May-10 08:00	172	0
H ₂ S	ppb	0.7	95%	1.6	May-29	3.6	0	7.9	May-13 19:00	11	0
O ₃	ppb	31.9	99%	42.9	May-29	-	-	60.7	May-29 15:00	82	0
PM _{2.5}	µg/m ³	7.7	99%	23.9	May-29	28	0	36.6	May-28 11:00	-	-

SAAQS: Saskatchewan Ambient Air Quality Standards



* colored lines indicate 1-hr concentration data for all parameters; solid black lines indicate 24-hr concentrations for PM_{2.5}, NO₂, SO₂, and H₂S

GPAZ Yorkton Station - May 2019 Summary Report



Parameters	Unit	Color Code for Wind Speed and Pollution Concentration Class						
		$0.3 \leq WS < 1.4$	$1.4 \leq WS < 3.1$	$3.1 \leq WS < 7.8$	$7.8 \leq WS < 10.8$	$10.8 \leq WS < 13.6$	$WS \geq 13.6$	
SO ₂	ppb	$0 \leq C < 1$	$1 \leq C < 5$	$5 \leq C < 10$	$10 \leq C < 57$	$57 \leq C < 172$	$C \geq 172$	
NO ₂	ppb	$0 \leq C < 5$	$5 \leq C < 15$	$15 \leq C < 30$	$30 \leq C < 100$	$100 \leq C < 212$	$C \geq 212$	
H ₂ S	ppb	$0 \leq C < 1$	$1 \leq C < 3.6$	$3.6 \leq C < 5$	$5 \leq C < 8$	$8 \leq C < 10.8$	$C \geq 10.8$	
O ₃	ppb	$0 \leq C < 10$	$10 \leq C < 20$	$20 \leq C < 40$	$40 \leq C < 60$	$60 \leq C < 82$	$C \geq 82$	
PM _{2.5}	$\mu\text{g}/\text{m}^3$	$0 \leq C < 2$	$2 \leq C < 4$	$4 \leq C < 10$	$10 \leq C < 20$	$20 \leq C < 30$	$C \geq 30$	

Monthly Update

- Achieved >98.5% of scheduled uptime for all parameters
- Downtime of 4% due to routine daily internal zeroes and spans
- Station was calibrated on May 28
- Replacement ozone analyzer was installed and calibrated on May 29