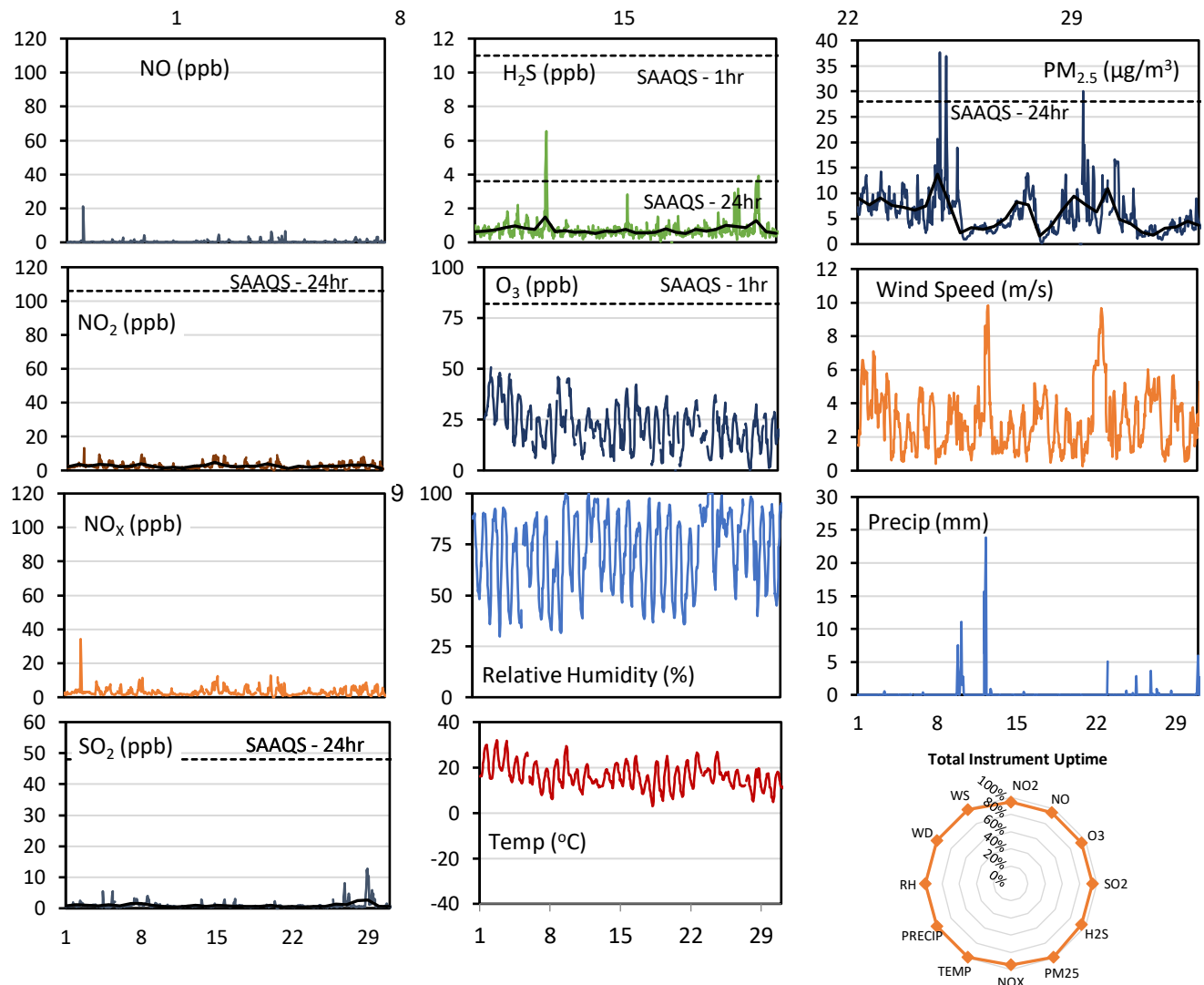
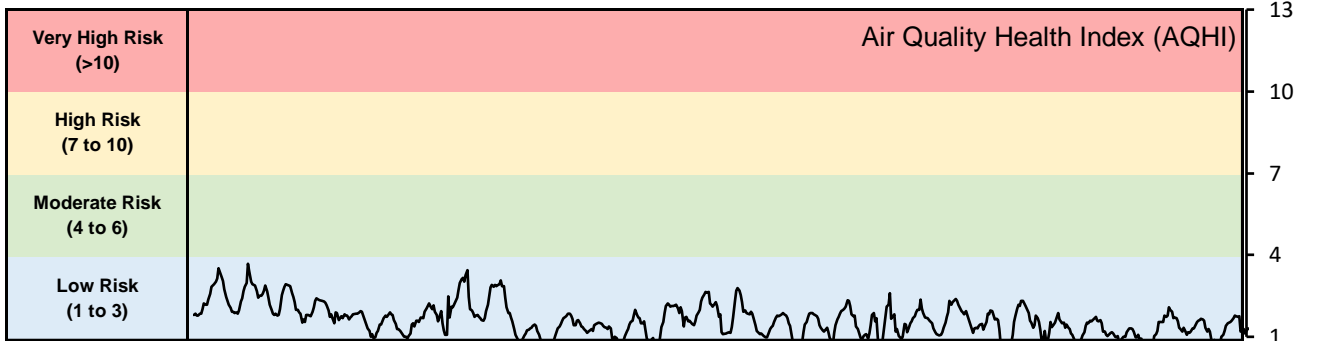


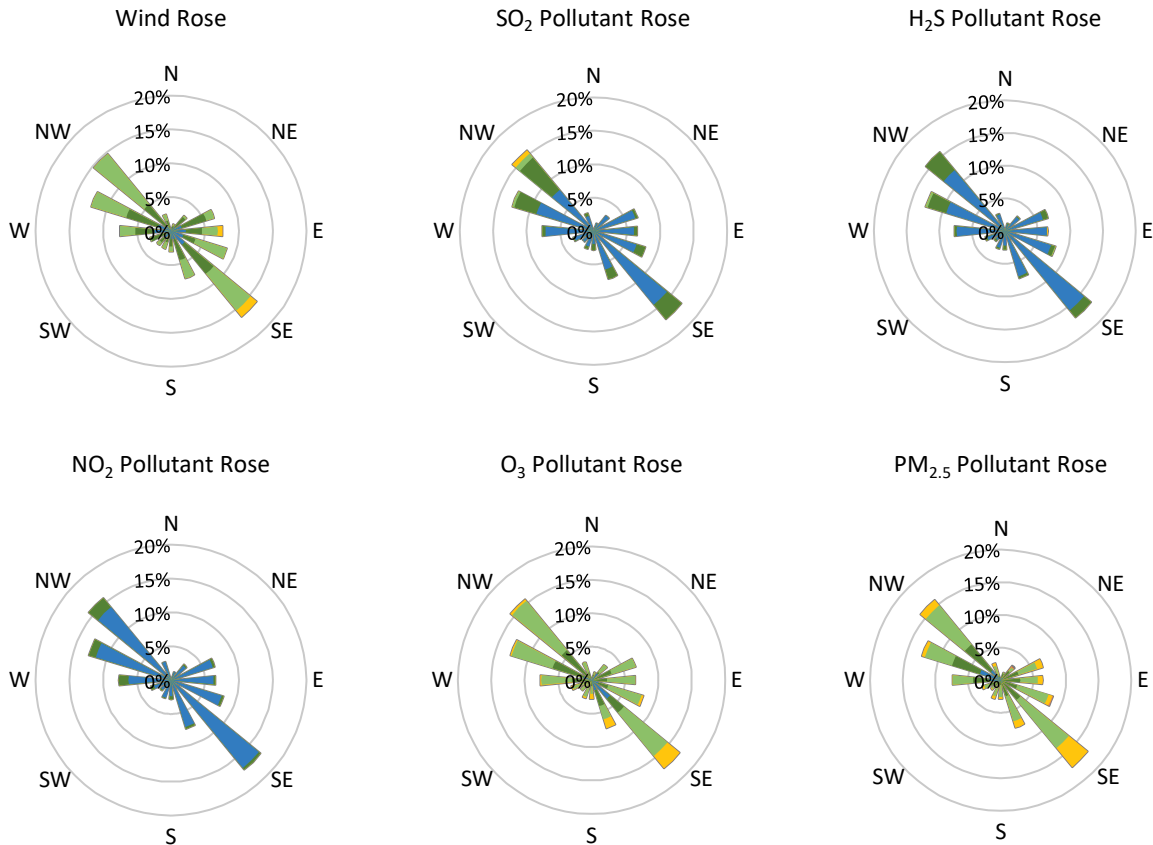
GPAZ Regina Station - August 2019 Summary Report

Pollutants		Month Records		24-Hour Records				1-Hour Records			
Name	Conc. Unit	Avg. Conc.	Total Uptime	Maximum		SAAQS Standard	Exceed Days	Maximum		SAAQS Standard	Exceed Hours
				Conc.	Time			Conc.	Time		
NO	ppb	0.5	95%	1.7	Aug-02	-	-	21.2	Aug-02 13:00	-	-
NO ₂	ppb	2.6	95%	4.8	Aug-15	106	0	13.2	Aug-02 13:00	159	0
NO _x	ppb	3.0	95%	5.4	Aug-15	-	-	34.3	Aug-02 13:00	-	-
SO ₂	ppb	0.9	95%	2.7	Aug-29	48	0	12.8	Aug-28 23:00	172	0
H ₂ S	ppb	0.7	95%	1.5	Aug-08	3.6	0	6.6	Aug-08 03:00	11	0
O ₃	ppb	21.5	95%	35.9	Aug-01	-	-	50.8	Aug-01 17:00	82	0
PM _{2.5}	µg/m ³	5.9	99%	13.7	Aug-08	28	0	37.6	Aug-08 06:00	-	-

SAAQS: Saskatchewan Ambient Air Quality Standards



GPAZ Regina Station - August 2019 Summary Report



Parameters	Unit	Color Code for Wind Speed and Pollution Concentration Class						
		$0.3 \leq WS < 1.4$	$1.4 \leq WS < 3.1$	$3.1 \leq WS < 7.8$	$7.8 \leq WS < 10.8$	$10.8 \leq WS < 13.6$	$WS \geq 13.6$	
SO ₂	ppb	$0 \leq C < 1$	$1 \leq C < 5$	$5 \leq C < 10$	$10 \leq C < 57$	$57 \leq C < 172$	$C \geq 172$	
NO ₂	ppb	$0 \leq C < 5$	$5 \leq C < 15$	$15 \leq C < 30$	$30 \leq C < 100$	$100 \leq C < 212$	$C \geq 212$	
H ₂ S	ppb	$0 \leq C < 1$	$1 \leq C < 3.6$	$3.6 \leq C < 5$	$5 \leq C < 8$	$8 \leq C < 10.8$	$C \geq 10.8$	
O ₃	ppb	$0 \leq C < 10$	$10 \leq C < 20$	$20 \leq C < 40$	$40 \leq C < 60$	$60 \leq C < 82$	$C \geq 82$	
PM _{2.5}	$\mu\text{g}/\text{m}^3$	$0 \leq C < 2$	$2 \leq C < 4$	$4 \leq C < 10$	$10 \leq C < 20$	$20 \leq C < 30$	$C \geq 30$	

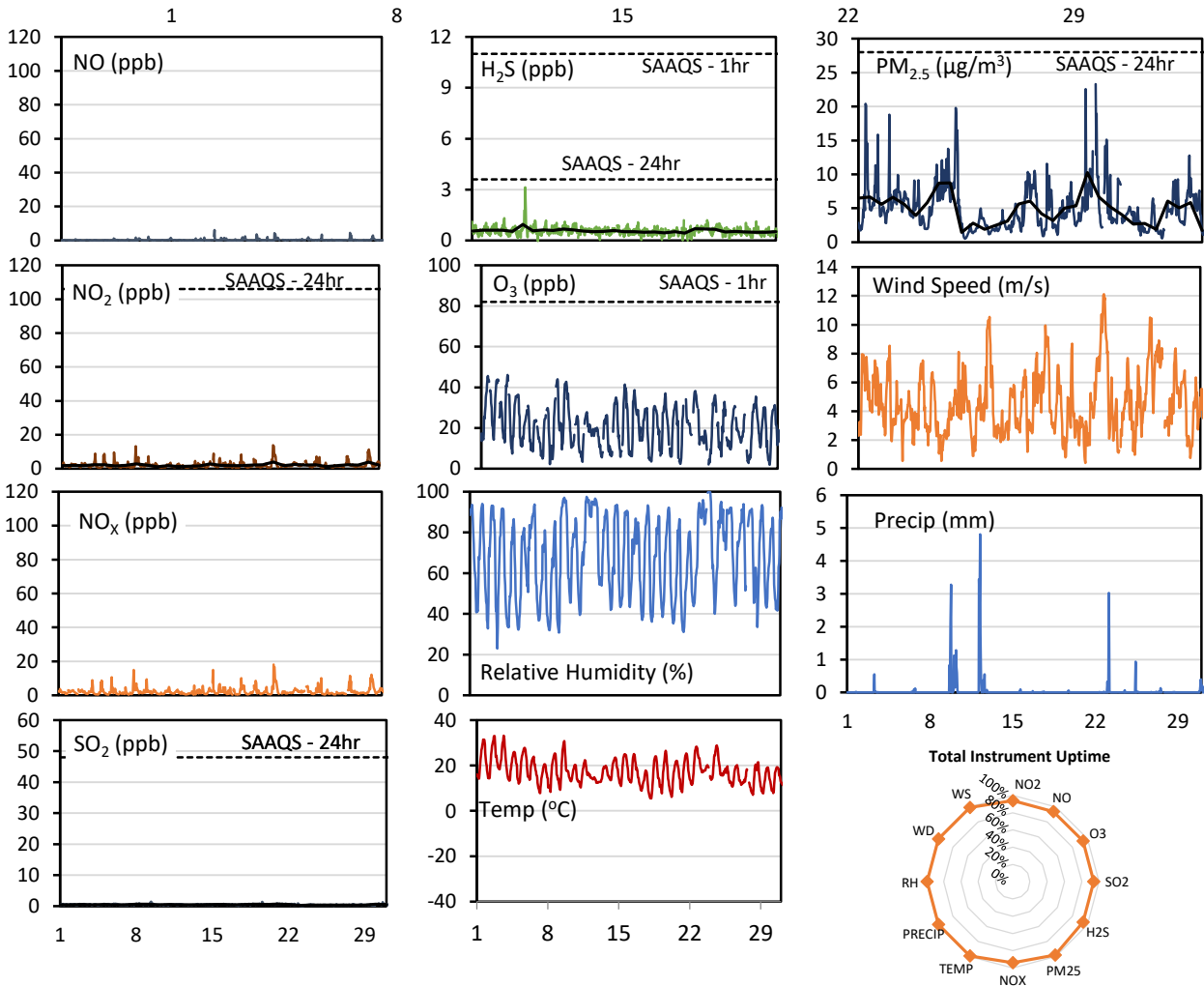
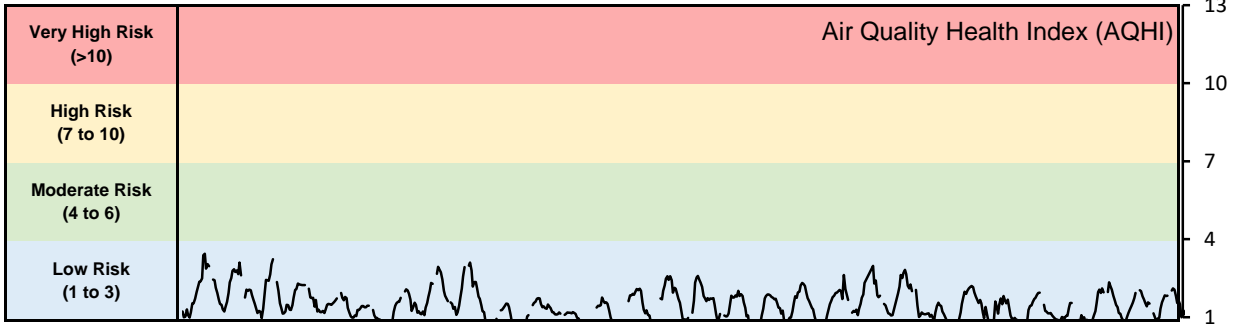
Monthly Update

- Achieved >98.8% of scheduled uptime for all parameters
- Downtime of 4% due to routine daily internal zeroes and spans
- Calibration occurred Aug 20, 2019

GPAZ Pense Station - August 2019 Summary Report

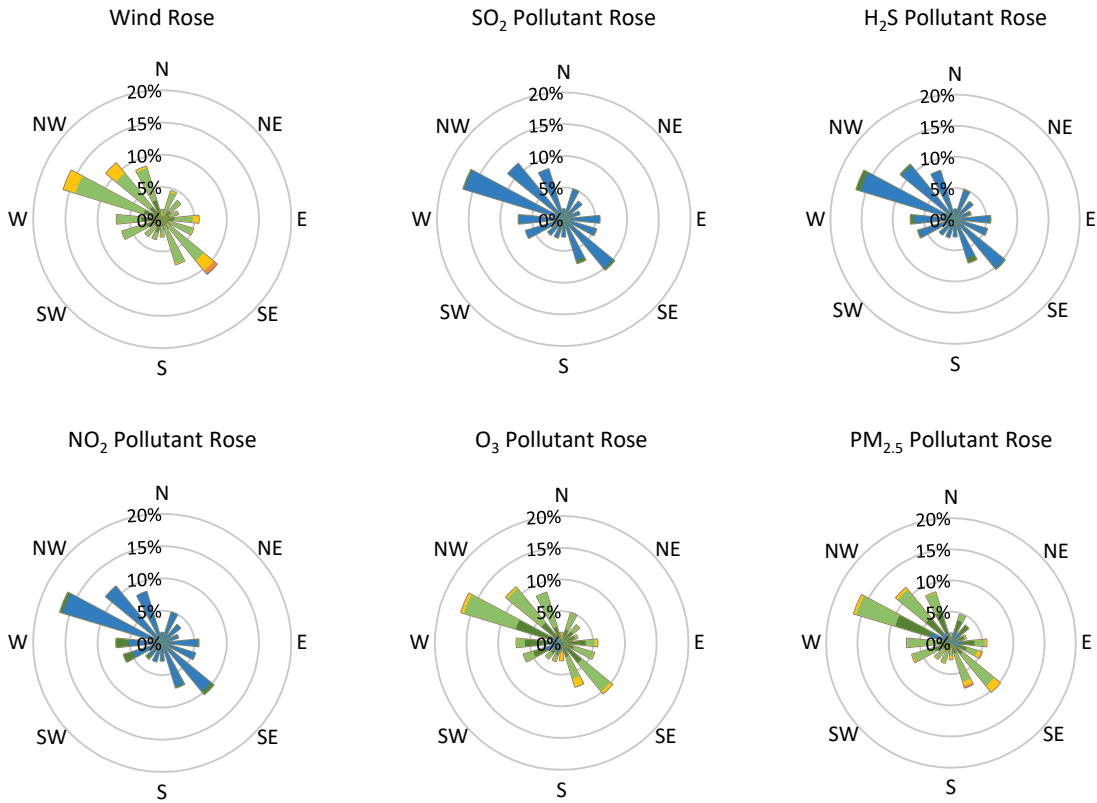
Pollutants		Month Records		24-Hour Records				1-Hour Records			
Name	Conc. Unit	Avg. Conc.	Total Uptime	Maximum		SAAQS Standard	Exceed Days	Maximum		SAAQS Standard	Exceed Hours
				Conc.	Time			Conc.	Time		
NO	ppb	0.3	94%	0.7	Aug-21	-	-	6.2	Aug-15 08:00	-	-
NO ₂	ppb	2.1	94%	3.9	Aug-21	106	0	13.8	Aug-20 23:00	159	0
NO _x	ppb	2.2	94%	4.5	Aug-21	-	-	18.1	Aug-20 23:00	-	-
SO ₂	ppb	0.5	94%	0.7	Aug-21	48	0	1.5	Aug-09 09:00	172	0
H ₂ S	ppb	0.6	94%	0.9	Aug-06	3.6	0	3.1	Aug-06 06:00	11	0
O ₃	ppb	20.9	94%	31.1	Aug-02	-	-	46.1	Aug-03 16:00	82	0
PM _{2.5}	µg/m ³	4.9	98%	10.3	Aug-21	28	0	23.3	Aug-21 17:00	-	-

SAAQS: Saskatchewan Ambient Air Quality Standards



* colored lines indicate 1-hr concentration data for all parameters; solid black lines indicate 24-hr concentrations for PM_{2.5}, NO₂, SO₂, and H₂S

GPAZ Pense Station - August 2019 Summary Report



Parameters	Unit	Color Code for Wind Speed and Pollution Concentration Class						
		$0.3 \leq WS < 1.4$	$1.4 \leq WS < 3.1$	$3.1 \leq WS < 7.8$	$7.8 \leq WS < 10.8$	$10.8 \leq WS < 13.6$	$WS \geq 13.6$	
SO ₂	ppb	$0 \leq C < 1$	$1 \leq C < 5$	$5 \leq C < 10$	$10 \leq C < 57$	$57 \leq C < 172$	$C \geq 172$	
NO ₂	ppb	$0 \leq C < 5$	$5 \leq C < 15$	$15 \leq C < 30$	$30 \leq C < 100$	$100 \leq C < 212$	$C \geq 212$	
H ₂ S	ppb	$0 \leq C < 1$	$1 \leq C < 3.6$	$3.6 \leq C < 5$	$5 \leq C < 8$	$8 \leq C < 10.8$	$C \geq 10.8$	
O ₃	ppb	$0 \leq C < 10$	$10 \leq C < 20$	$20 \leq C < 40$	$40 \leq C < 60$	$60 \leq C < 82$	$C \geq 82$	
PM _{2.5}	$\mu\text{g}/\text{m}^3$	$0 \leq C < 2$	$2 \leq C < 4$	$4 \leq C < 10$	$10 \leq C < 20$	$20 \leq C < 30$	$C \geq 30$	

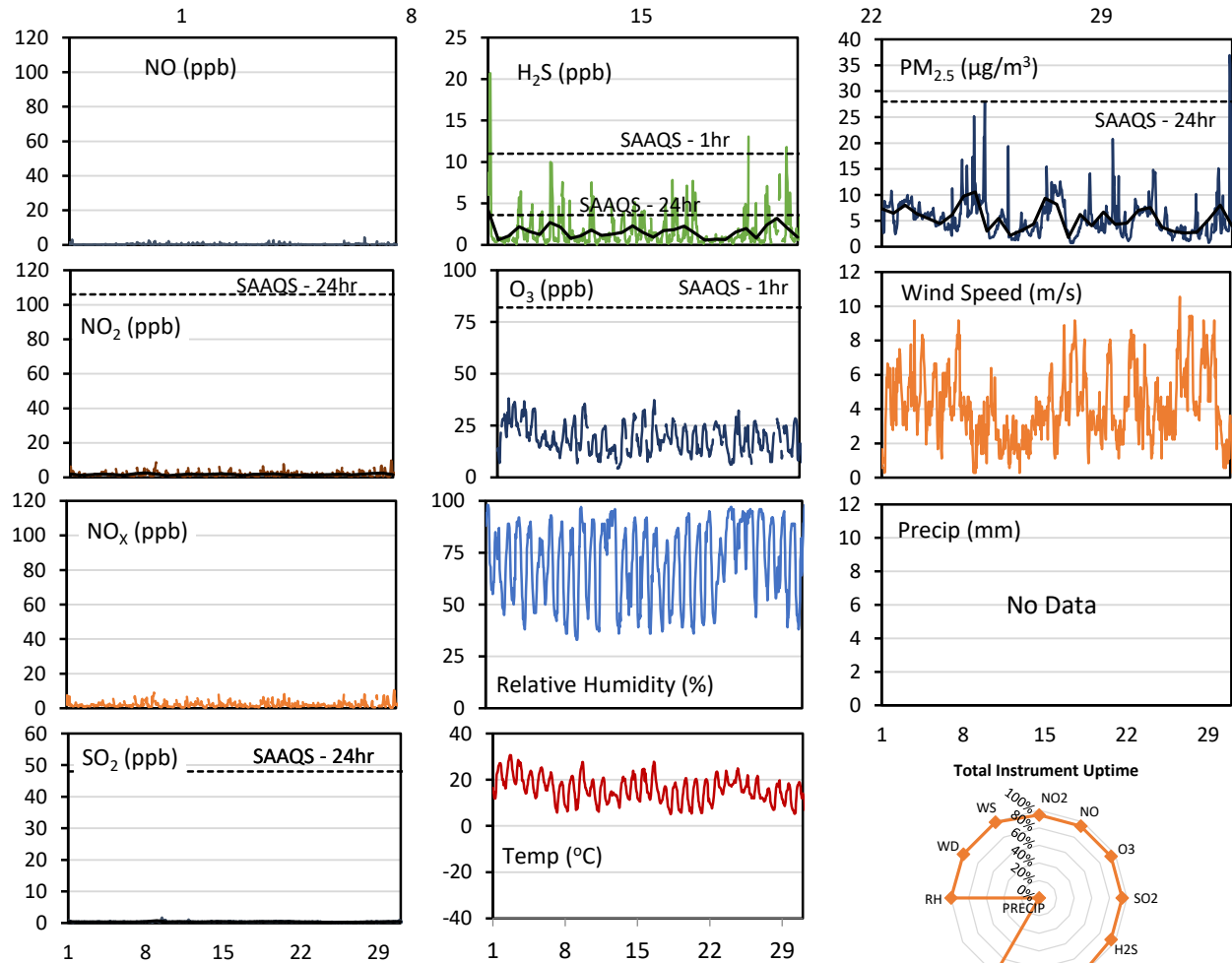
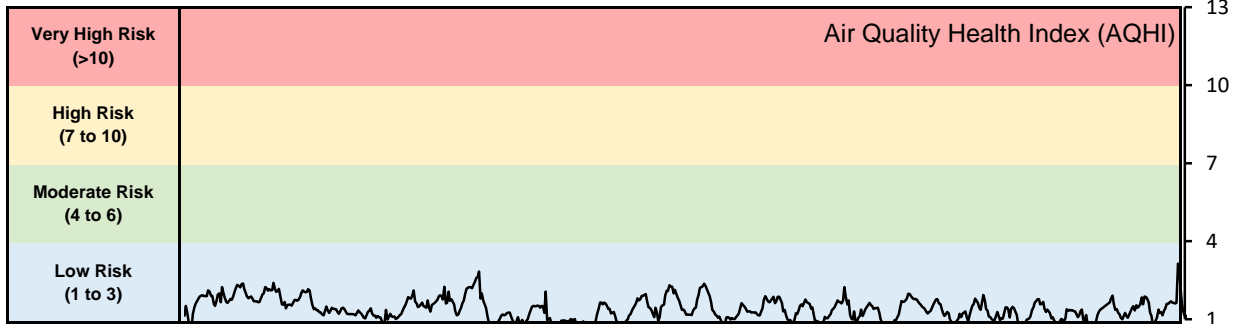
Monthly Update

- Achieved >98% of scheduled uptime for all parameters
- Downtime of 4% due to routine daily internal zeroes and spans
- Calibration occurred on Aug 21, 2019

GPAZ Yorkton Station - August 2019 Summary Report

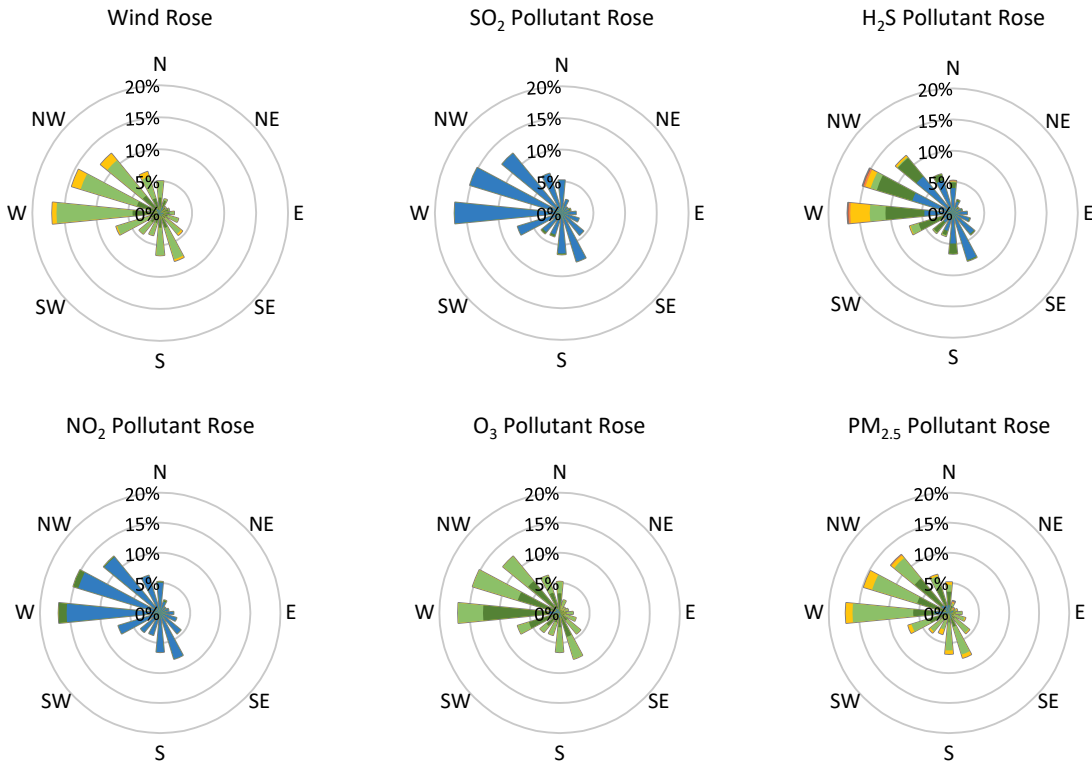
Pollutants		Month Records		24-Hour Records				1-Hour Records			
Name	Conc. Unit	Avg. Conc.	Total Uptime	Maximum		SAAQS Standard	Exceed Days	Maximum		SAAQS Standard	Exceed Hours
				Conc.	Time			Conc.	Time		
NO	ppb	0.4	95%	0.7	Aug-08	-	-	4.4	Aug-28 03:00	-	-
NO ₂	ppb	1.7	95%	2.6	Aug-08	106	0	9.7	Aug-30 20:00	159	0
NO _x	ppb	2.0	95%	3.3	Aug-08	-	-	10.5	Aug-30 20:00	-	-
SO ₂	ppb	0.4	95%	0.7	Aug-09	48	0	1.7	Aug-09 11:00	172	0
H ₂ S	ppb	1.6	94%	4.2	Aug-01	3.6	1	20.7	Aug-01 05:00	11	5
O ₃	ppb	19.1	95%	30.5	Aug-02	-	-	38.1	Aug-02 03:00	82	0
PM _{2.5}	µg/m ³	5.6	99%	10.6	Aug-09	28	0	37.0	Aug-30 19:00	-	-

SAAQS: Saskatchewan Ambient Air Quality Standards



* colored lines indicate 1-hr concentration data for all parameters; solid black lines indicate 24-hr concentrations for PM_{2.5}, NO₂, SO₂, and H₂S

GPAZ Yorkton Station - August 2019 Summary Report



Parameters	Unit	Color Code for Wind Speed and Pollution Concentration Class						
Wind Speed	m/s	$0.3 \leq WS < 1.4$	$1.4 \leq WS < 3.1$	$3.1 \leq WS < 7.8$	$7.8 \leq WS < 10.8$	$10.8 \leq WS < 13.6$	$WS \geq 13.6$	
SO ₂	ppb	$0 \leq C < 1$	$1 \leq C < 5$	$5 \leq C < 10$	$10 \leq C < 57$	$57 \leq C < 172$	$C \geq 172$	
NO ₂	ppb	$0 \leq C < 5$	$5 \leq C < 15$	$15 \leq C < 30$	$30 \leq C < 100$	$100 \leq C < 212$	$C \geq 212$	
H ₂ S	ppb	$0 \leq C < 1$	$1 \leq C < 3.6$	$3.6 \leq C < 5$	$5 \leq C < 8$	$8 \leq C < 10.8$	$C \geq 10.8$	
O ₃	ppb	$0 \leq C < 10$	$10 \leq C < 20$	$20 \leq C < 40$	$40 \leq C < 60$	$60 \leq C < 82$	$C \geq 82$	
PM _{2.5}	µg/m ³	$0 \leq C < 2$	$2 \leq C < 4$	$4 \leq C < 10$	$10 \leq C < 20$	$20 \leq C < 30$	$C \geq 30$	

Monthly Update

- Achieved >93.4% of scheduled uptime for all parameters except for meteorological parameters (0%)
- Downtime of 4% due to routine daily internal zeroes and spans
- Weather sensor failed. A replacement sensor was installed and also failed. The sensors were shipped to the vendor for repair or replacement. Weather data was taken from the Environment and Climate Change Canada
- No precipitation data available
- Station was calibrated on August 28, 2019

Exceedance Summary (1- Hour Average - Exceedances Highlighted)

Exceedance Time	AQHI	NO ₂	NO	SO ₂	O ₃	NO _x	H ₂ S	PM _{2.5}	Temp	WD	WS
	-	ppb	ppb	ppb	ppb	ppb	ppb	µg/m ³	°C	deg	m/s
Aug-01 04:00	0.7	1.6	0.4	0.7	8.5	1.9	20.6	2.7	12.3	N/A	N/A
Aug-01 05:00	0.7	2.0	0.9	0.4	7.0	2.9	20.7	3.0	11.9	350.0	0.6
Aug-01 06:00	1.2	3.7	3.1	0.5	9.1	6.7	14.3	8.8	12.1	10.0	0.3
Aug-26 06:00	1.0	5.6	2.4	0.2	6.5	7.9	13.1	3.5	12.0	290.0	2.8
Aug-29 22:00	1.6	6.9	0.7	0.4	12.4	7.5	11.8	9.1	8.3	280.0	4.2

Hour Average - Exceedances Highlighted)

Exceedance Time	AQHI	NO ₂	NO	SO ₂	O ₃	NO _x	H ₂ S	PM _{2.5}	Temp	WD	WS
	-	ppb	ppb	ppb	ppb	ppb	ppb	µg/m ³	°C	deg	m/s
Aug-01 00:00	1.6	1.9	0.5	0.4	20.6	2.3	4.2	7.3	20.6	146.5	3.6