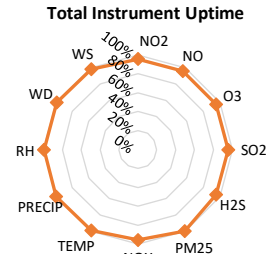
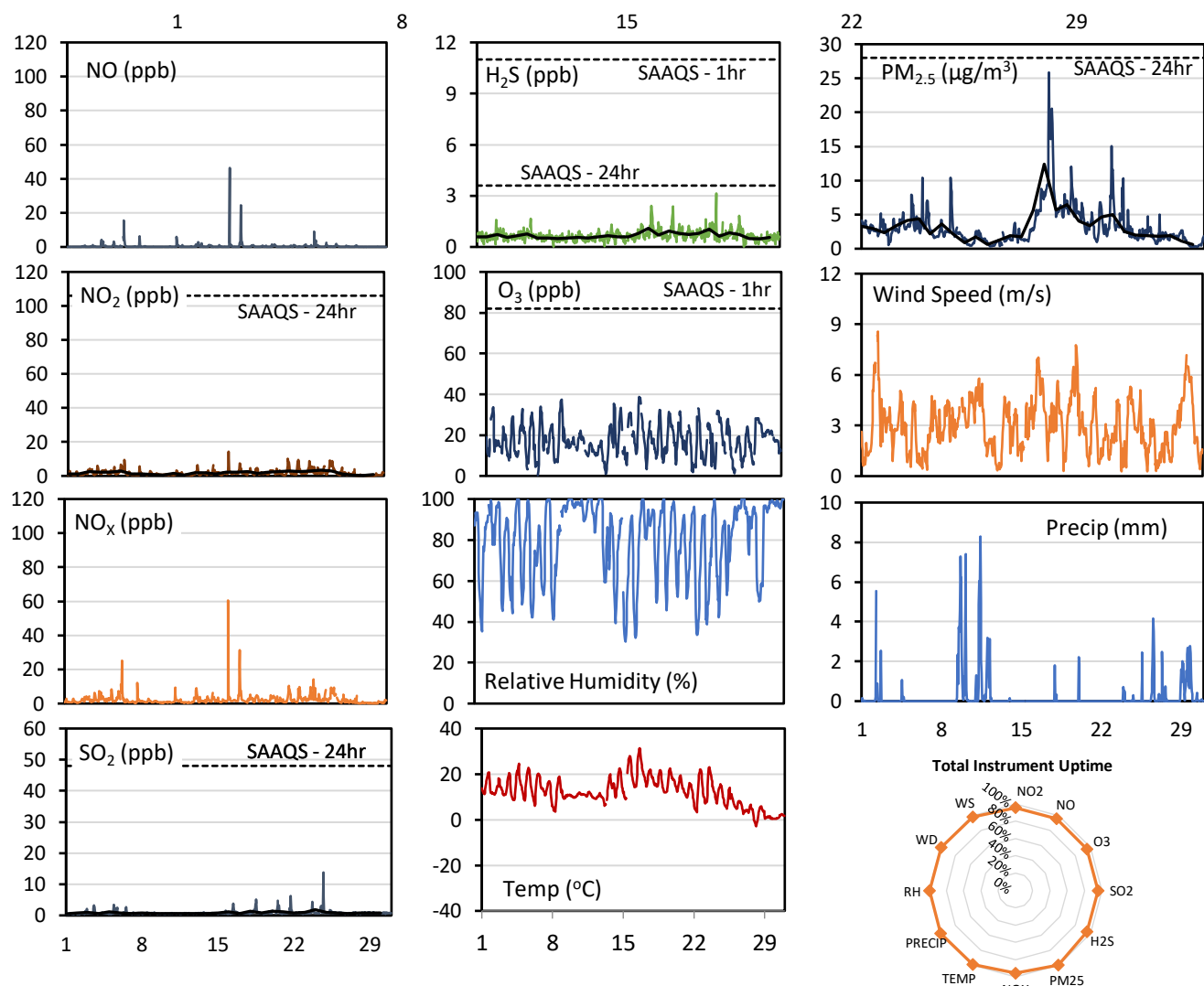
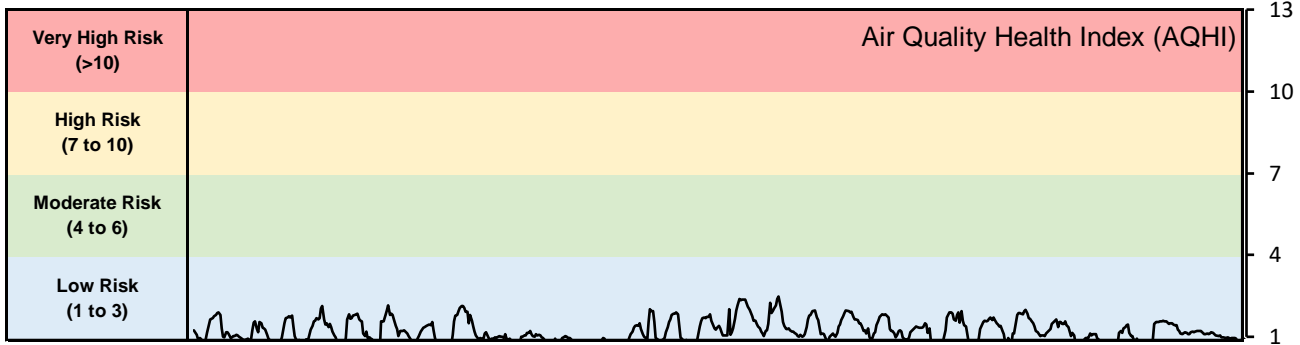


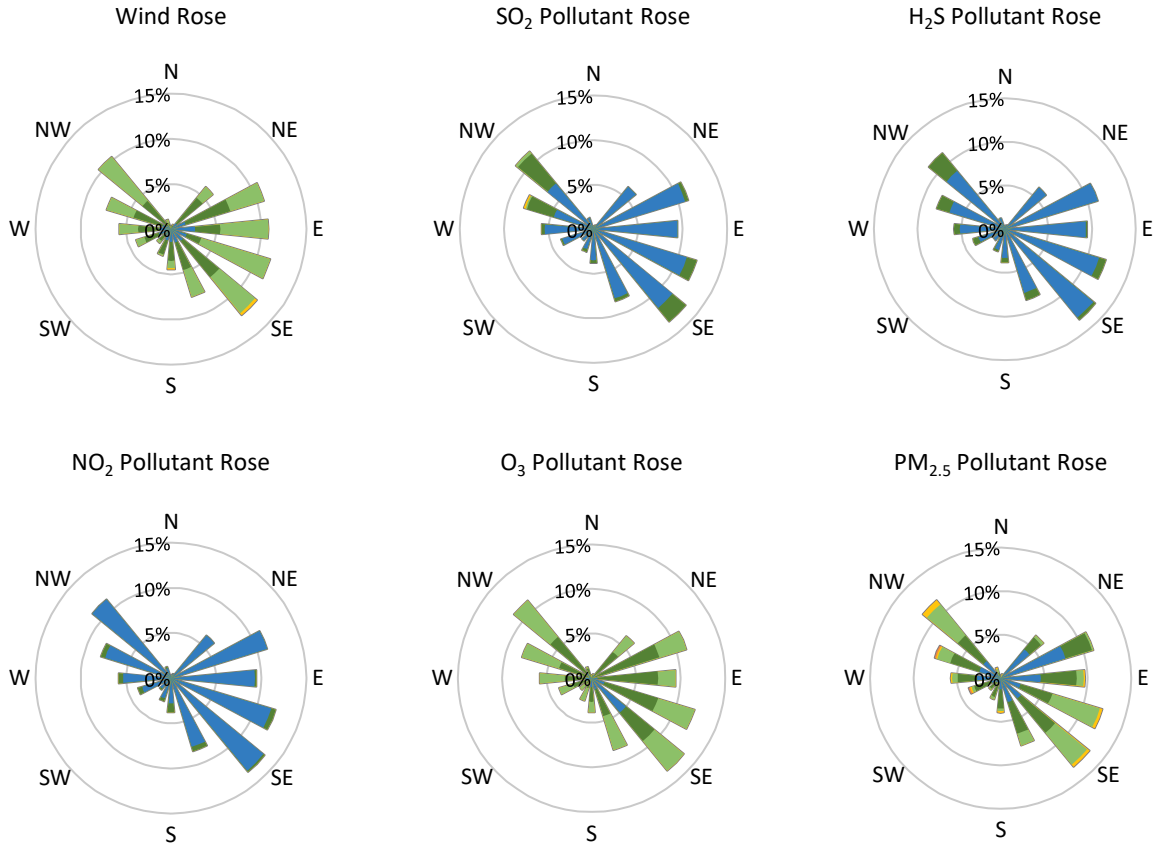
GPAZ Regina Station - September 2019 Summary Report

Pollutants		Month Records		24-Hour Records				1-Hour Records			
Name	Conc. Unit	Avg. Conc.	Total Uptime	Maximum		SAAQS Standard	Exceed Days	Maximum		SAAQS Standard	Exceed Hours
				Conc.	Time			Conc.	Time		
NO	ppb	0.5	96%	2.4	Sep-16	-	-	46.4	Sep-16 06:00	-	-
NO ₂	ppb	1.8	96%	3.4	Sep-25	106	0	14.3	Sep-16 06:00	159	0
NO _x	ppb	2.2	96%	4.6	Sep-17	-	-	60.5	Sep-16 06:00	-	-
SO ₂	ppb	0.8	96%	1.8	Sep-24	48	0	13.8	Sep-24 17:00	172	0
H ₂ S	ppb	0.7	96%	1.1	Sep-18	3.6	0	3.1	Sep-24 17:00	11	0
O ₃	ppb	17.4	96%	24.3	Sep-16	-	-	38.7	Sep-16 13:00	82	0
PM _{2.5}	µg/m ³	3.2	99%	12.4	Sep-17	28	0	25.9	Sep-17 10:00	-	-

SAAQS: Saskatchewan Ambient Air Quality Standards



GPAZ Regina Station - September 2019 Summary Report



Parameters	Unit	Color Code for Wind Speed and Pollution Concentration Class						
		0.3 ≤ WS < 1.4	1.4 ≤ WS < 3.1	3.1 ≤ WS < 7.8	7.8 ≤ WS < 10.8	10.8 ≤ WS < 13.6	WS ≥ 13.6	
SO ₂	ppb	0 ≤ C < 1	1 ≤ C < 5	5 ≤ C < 10	10 ≤ C < 57	57 ≤ C < 172	C ≥ 172	
NO ₂	ppb	0 ≤ C < 5	5 ≤ C < 15	15 ≤ C < 30	30 ≤ C < 100	100 ≤ C < 212	C ≥ 212	
H ₂ S	ppb	0 ≤ C < 1	1 ≤ C < 3.6	3.6 ≤ C < 5	5 ≤ C < 8	8 ≤ C < 10.8	C ≥ 10.8	
O ₃	ppb	0 ≤ C < 10	10 ≤ C < 20	20 ≤ C < 40	40 ≤ C < 60	60 ≤ C < 82	C ≥ 82	
PM _{2.5}	µg/m ³	0 ≤ C < 2	2 ≤ C < 4	4 ≤ C < 10	10 ≤ C < 20	20 ≤ C < 30	C ≥ 30	

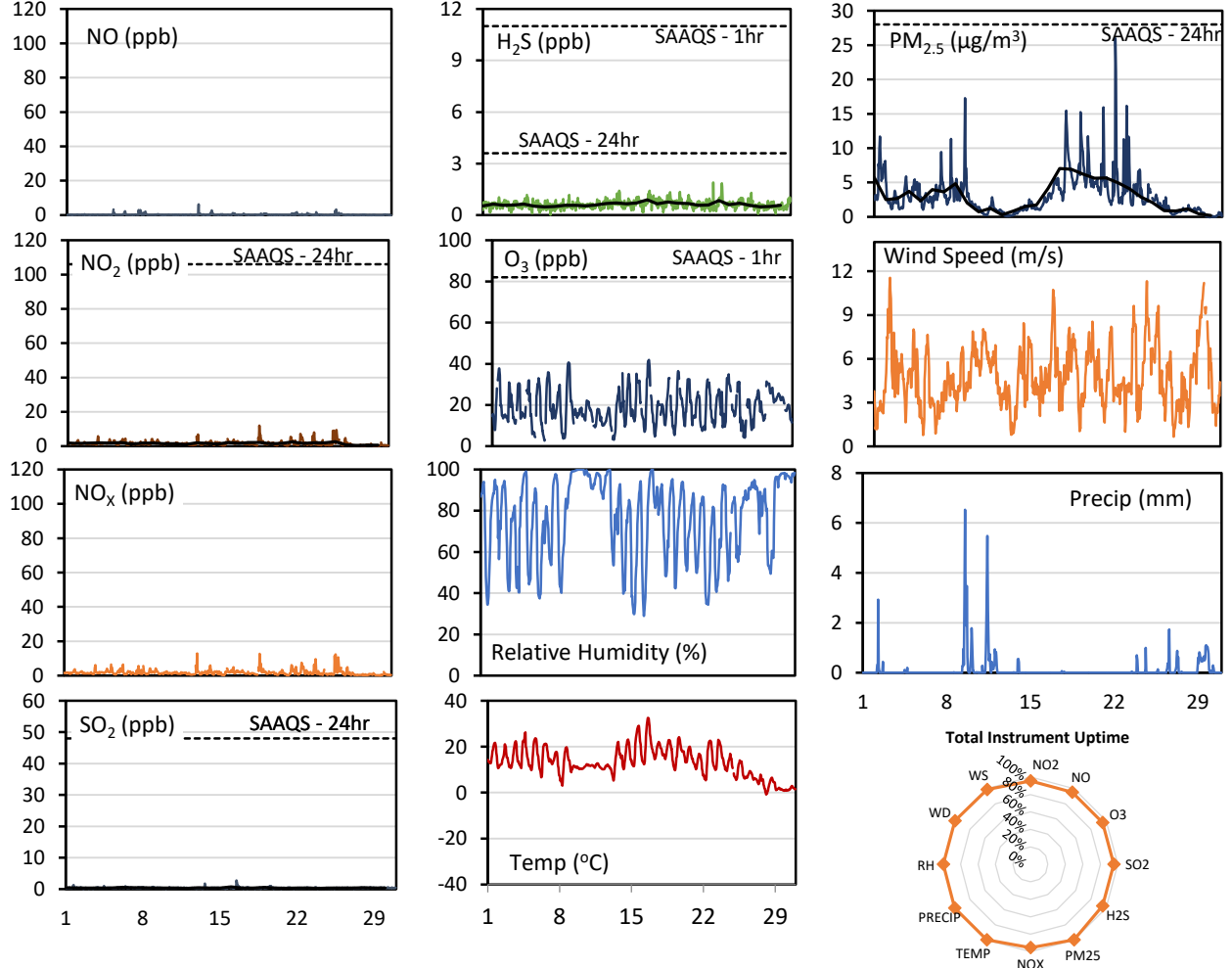
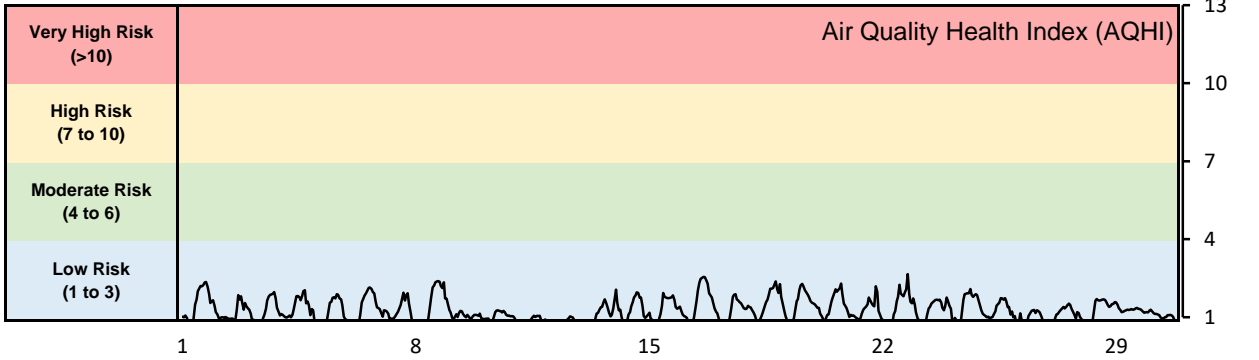
Monthly Update

- Achieved > 98.2% of scheduled uptime for all parameters
- Downtime of 4% due to routine daily internal zeroes and spans

GPAZ Pense Station - September 2019 Summary Report

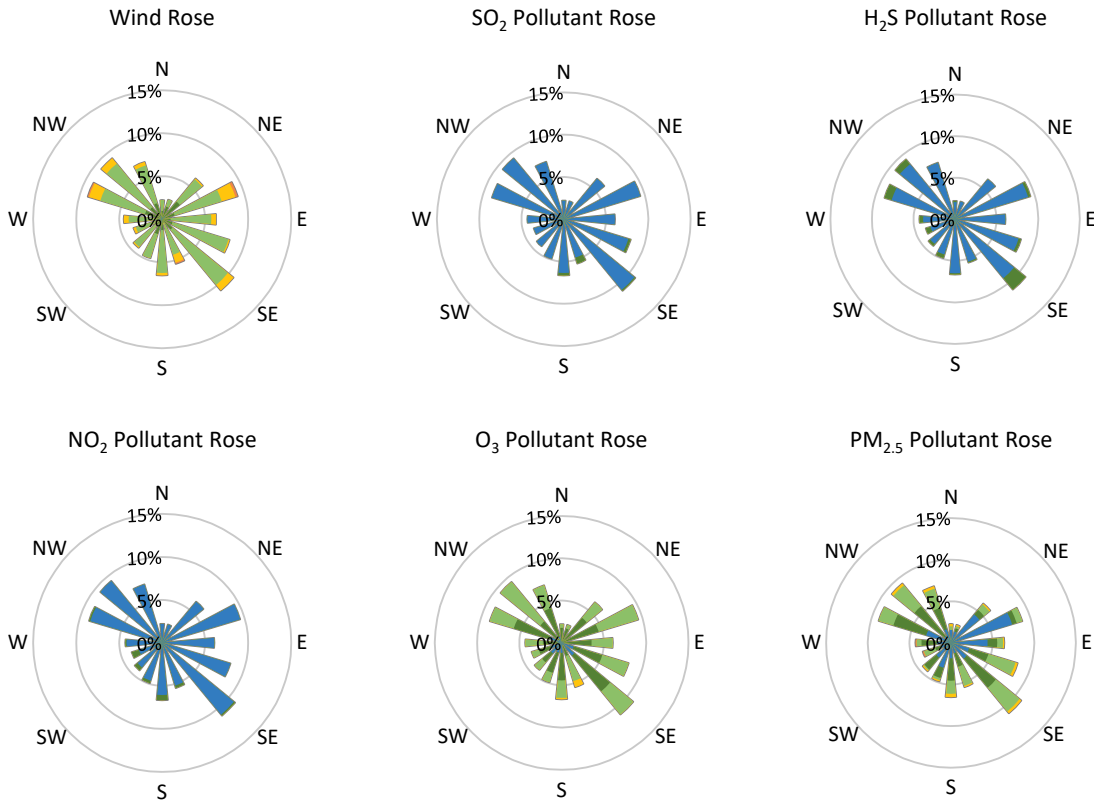
Pollutants		Month Records		24-Hour Records				1-Hour Records			
Name	Conc. Unit	Avg. Conc.	Total Uptime	Maximum		SAAQS Standard	Exceed Days	Maximum		SAAQS Standard	Exceed Hours
				Conc.	Time			Conc.	Time		
NO	ppb	0.3	95%	0.6	Sep-07	-	-	6.3	Sep-13 04:00	-	-
NO ₂	ppb	1.6	95%	2.6	Sep-26	106	0	12.0	Sep-18 22:00	159	0
NO _x	ppb	1.8	95%	2.9	Sep-22	-	-	12.9	Sep-13 04:00	-	-
SO ₂	ppb	0.4	95%	0.7	Sep-16	48	0	2.8	Sep-16 12:00	172	0
H ₂ S	ppb	0.6	95%	0.9	Sep-17	3.6	0	1.9	Sep-23 11:00	11	0
O ₃	ppb	18.9	95%	23.7	Sep-28	-	-	41.9	Sep-16 16:00	82	0
PM _{2.5}	µg/m ³	3.0	100%	7.0	Sep-17	28	0	26.0	Sep-21 19:00	-	-

SAAQS: Saskatchewan Ambient Air Quality Standards



* colored lines indicate 1-hr concentration data for all parameters; solid black lines indicate 24-hr concentrations for PM_{2.5}, NO₂, SO₂, and H₂S

GPAZ Pense Station - September 2019 Summary Report



Parameters	Unit	Color Code for Wind Speed and Pollution Concentration Class						
		0.3 ≤ WS < 1.4	1.4 ≤ WS < 3.1	3.1 ≤ WS < 7.8	7.8 ≤ WS < 10.8	10.8 ≤ WS < 13.6	WS ≥ 13.6	
SO ₂	ppb	0 ≤ C < 1	1 ≤ C < 5	5 ≤ C < 10	10 ≤ C < 57	57 ≤ C < 172	C ≥ 172	
NO ₂	ppb	0 ≤ C < 5	5 ≤ C < 15	15 ≤ C < 30	30 ≤ C < 100	100 ≤ C < 212	C ≥ 212	
H ₂ S	ppb	0 ≤ C < 1	1 ≤ C < 3.6	3.6 ≤ C < 5	5 ≤ C < 8	8 ≤ C < 10.8	C ≥ 10.8	
O ₃	ppb	0 ≤ C < 10	10 ≤ C < 20	20 ≤ C < 40	40 ≤ C < 60	60 ≤ C < 82	C ≥ 82	
PM _{2.5}	µg/m ³	0 ≤ C < 2	2 ≤ C < 4	4 ≤ C < 10	10 ≤ C < 20	20 ≤ C < 30	C ≥ 30	

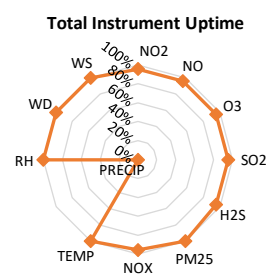
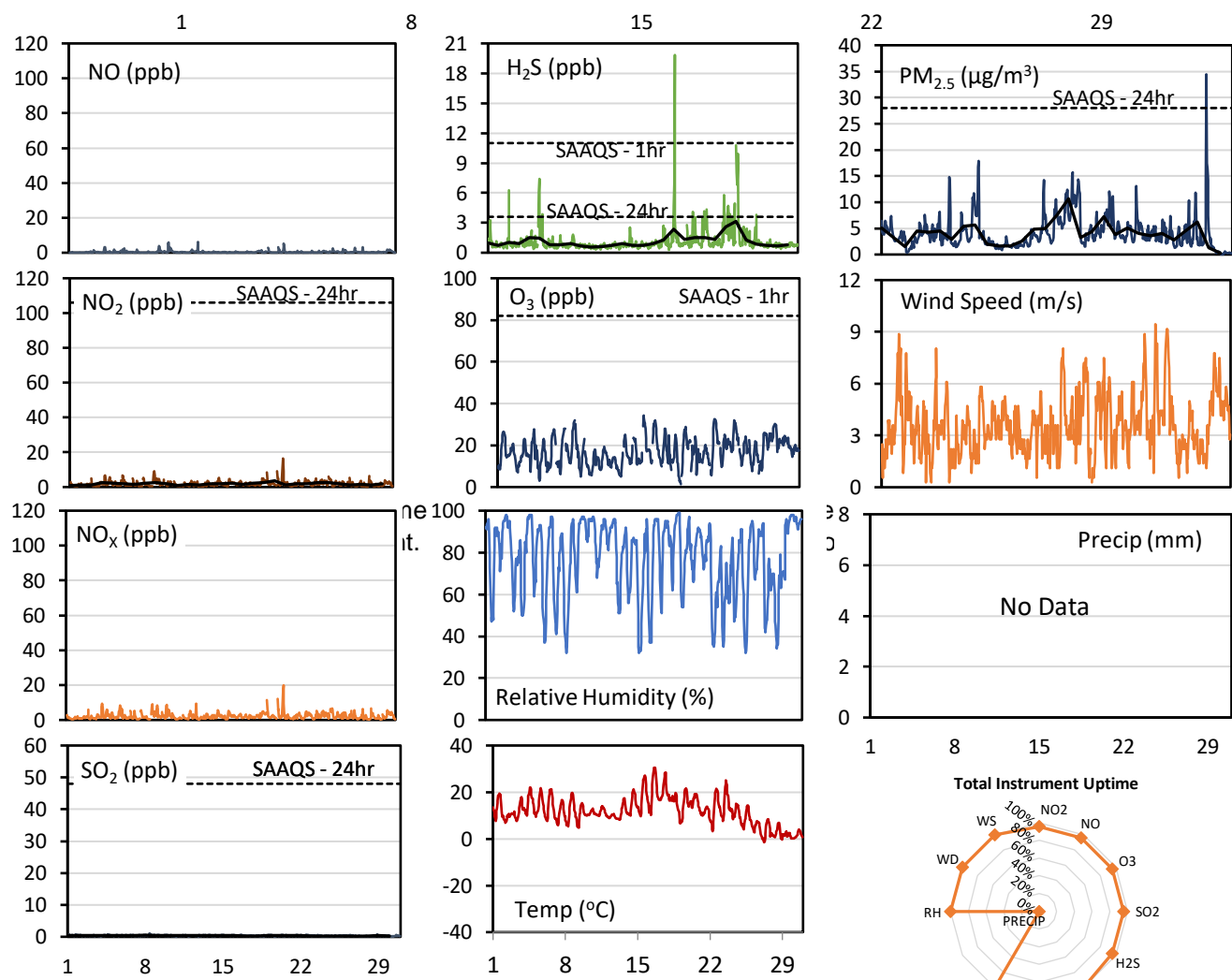
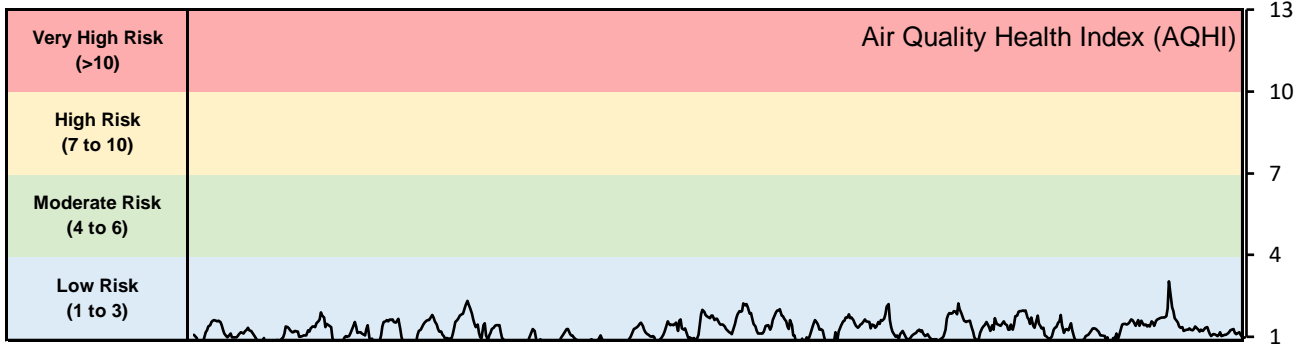
Monthly Update

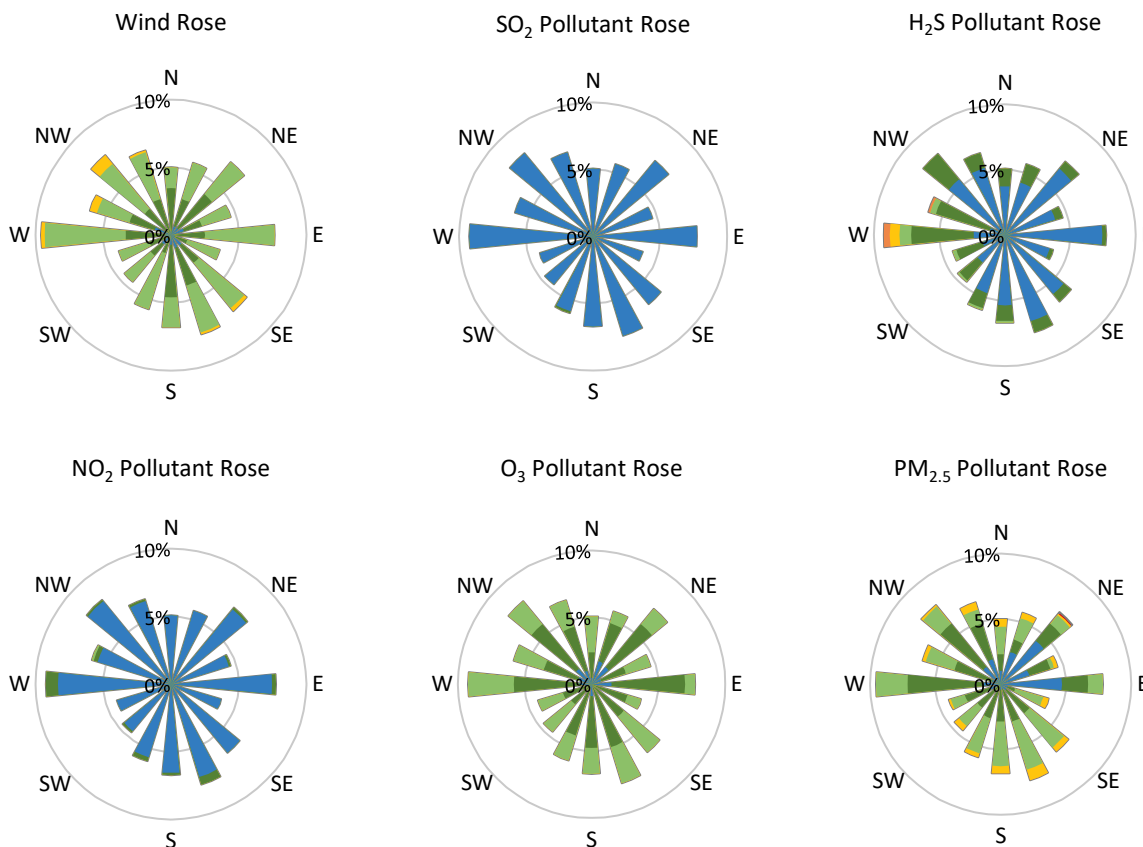
- Achieved > 99% of scheduled uptime for all parameters
- Downtime of 4% due to routine daily internal zeroes and spans

GPAZ Yorkton Station - September 2019 Summary Report

Pollutants		Month Records		24-Hour Records				1-Hour Records			
Name	Conc. Unit	Avg. Conc.	Total Uptime	Maximum		SAAQS Standard	Exceed Days	Maximum		SAAQS Standard	Exceed Hours
				Conc.	Time			Conc.	Time		
NO	ppb	0.4	96%	1.2	Sep-10	-	-	6.2	Sep-12 20:00	-	-
NO ₂	ppb	1.8	96%	3.6	Sep-20	106	0	16.4	Sep-20 19:00	159	0
NO _x	ppb	2.1	96%	4.4	Sep-20	-	-	19.9	Sep-20 19:00	-	-
SO ₂	ppb	0.4	96%	0.5	Sep-08	48	0	1.1	Sep-08 09:00	172	0
H ₂ S	ppb	1.1	96%	3.1	Sep-25	3.6	0	19.8	Sep-19 02:00	11	1
O ₃	ppb	17.1	96%	25.1	Sep-28	-	-	34.3	Sep-15 12:00	82	0
PM _{2.5}	µg/m ³	4.1	100%	10.7	Sep-17	28	0	34.4	Sep-28 19:00	-	-

SAAQS: Saskatchewan Ambient Air Quality Standards





Parameters	Unit	Color Code for Wind Speed and Pollution Concentration Class						
		0.3 ≤ WS < 1.4	1.4 ≤ WS < 3.1	3.1 ≤ WS < 7.8	7.8 ≤ WS < 10.8	10.8 ≤ WS < 13.6	WS ≥ 13.6	
SO ₂	ppb	0 ≤ C < 1	1 ≤ C < 5	5 ≤ C < 10	10 ≤ C < 57	57 ≤ C < 172	C ≥ 172	
NO ₂	ppb	0 ≤ C < 5	5 ≤ C < 15	15 ≤ C < 30	30 ≤ C < 100	100 ≤ C < 212	C ≥ 212	
H ₂ S	ppb	0 ≤ C < 1	1 ≤ C < 3.6	3.6 ≤ C < 5	5 ≤ C < 8	8 ≤ C < 10.8	C ≥ 10.8	
O ₃	ppb	0 ≤ C < 10	10 ≤ C < 20	20 ≤ C < 40	40 ≤ C < 60	60 ≤ C < 82	C ≥ 82	
PM _{2.5}	µg/m ³	0 ≤ C < 2	2 ≤ C < 4	4 ≤ C < 10	10 ≤ C < 20	20 ≤ C < 30	C ≥ 30	

Monthly Update

- Achieved > 99% of scheduled uptime for all parameters except for meteorological parameters (0%)
- Downtime of 4% due to routine daily internal zeroes and spans
- Weather sensor failed. A replacement sensor was installed and also failed. Weather sensors were shipped to the vendor for repair or replacement. Weather data was taken from Environment and Climate Change Canada station at the Yorkton airport.
- No precipitation data available

Exceedance Summary (1- Hour Average - Exceedances Highlighted)

Exceedance Time	AQHI	NO ₂	NO	SO ₂	O ₃	NO _x	H ₂ S	PM _{2.5}	Temp	WD	WS
	-	ppb	ppb	ppb	ppb	ppb	ppb	µg/m ³	°C	deg	m/s
Sep-19 02:00	0.5	3.1	0.6	0.6	2.8	3.7	19.8	3.0	6.9	20.0	0.3