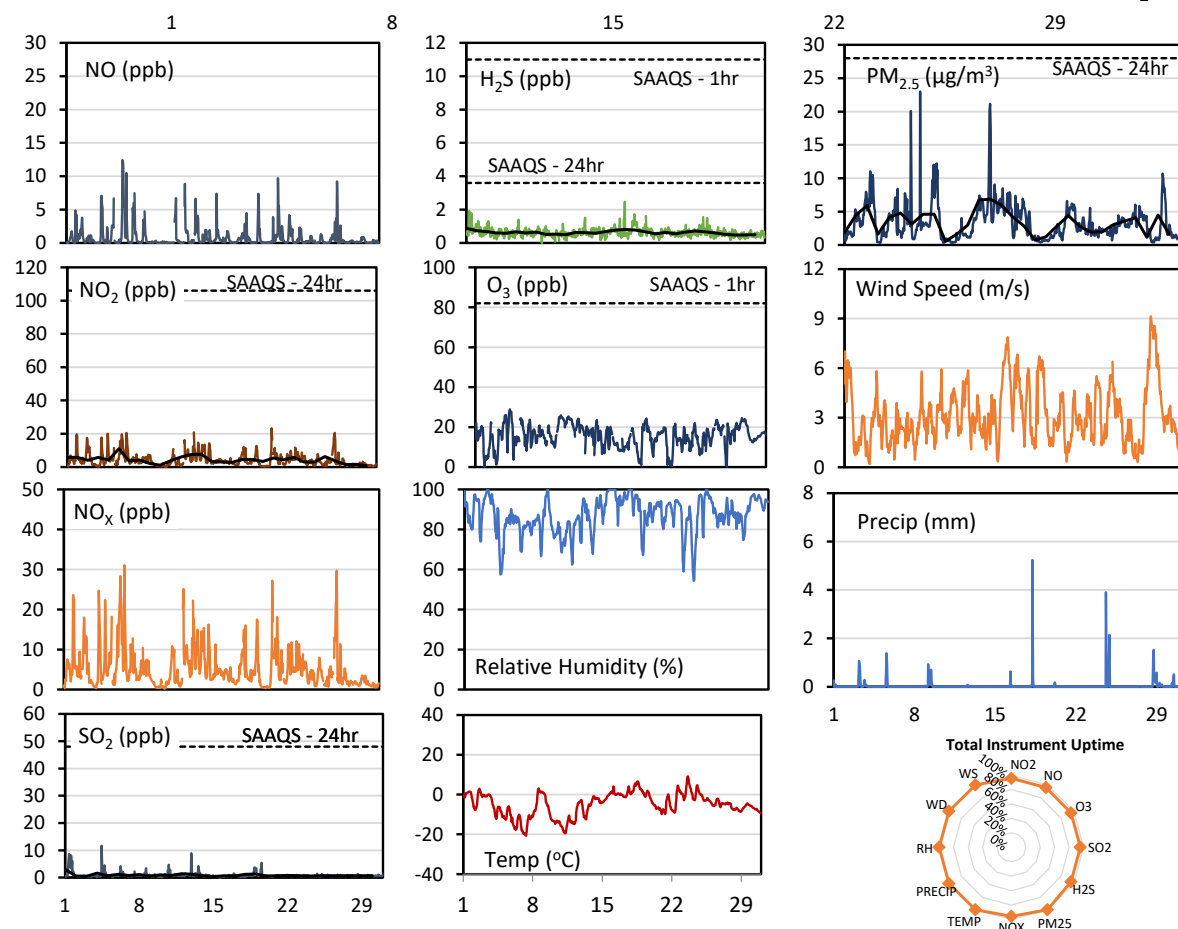
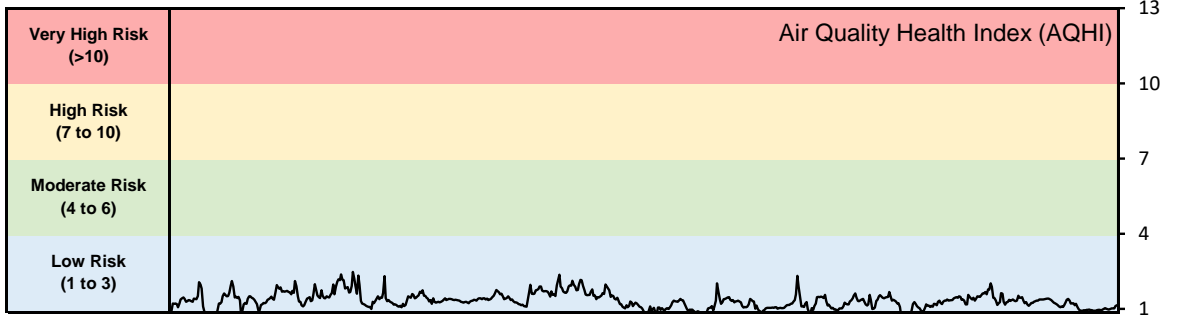


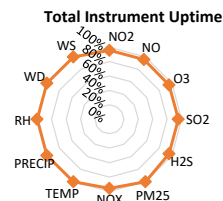
GPAZ Regina Station - November 2019 Summary Report

Pollutants		Month Records		24-Hour Records				1-Hour Records			
Name	Conc. Unit	Avg. Conc.	Total Uptime	Maximum		SAAQS Standard	Exceed Days	Maximum		SAAQS Standard	Exceed Hours
				Conc.	Time			Conc.	Time		
NO	ppb	0.8	96%	3.2	Nov-06	-	-	12.4	Nov-06 09:00	-	-
NO ₂	ppb	4.3	96%	11.0	Nov-06	106	0	23.3	Nov-20 20:00	159	0
NO _x	ppb	5.1	96%	14.3	Nov-06	-	-	31.1	Nov-06 18:00	-	-
SO ₂	ppb	0.9	96%	3.0	Nov-01	48	0	11.6	Nov-04 11:00	172	0
H ₂ S	ppb	0.6	96%	0.9	Nov-01	3.6	0	2.5	Nov-16 22:00	11	0
O ₃	ppb	15.5	96%	23.6	Nov-10	-	-	28.9	Nov-04 14:00	82	0
PM _{2.5}	µg/m ³	3.4	100%	6.9	Nov-14	28	0	23.0	Nov-07 18:00	-	-

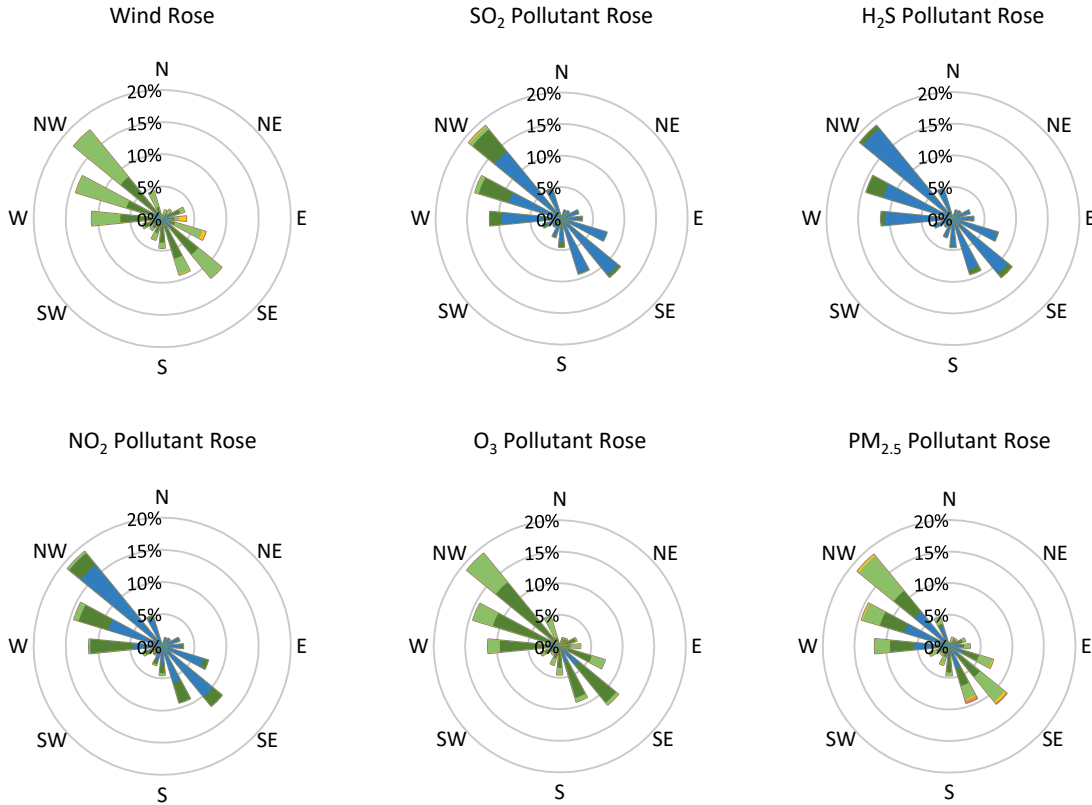
SAAQS: Saskatchewan Ambient Air Quality Standards



* colored lines indicate 1-hr concentration data for all parameters; solid black lines indicate 24-hr concentrations for PM_{2.5}, NO₂, SO₂, and H₂S



GPAZ Regina Station - November 2019 Summary Report



Parameters	Unit	Color Code for Wind Speed and Pollution Concentration Class						
Wind Speed	m/s	$0.3 \leq WS < 1.4$	$1.4 \leq WS < 3.1$	$3.1 \leq WS < 7.8$	$7.8 \leq WS < 10.8$	$10.8 \leq WS < 13.6$	$WS \geq 13.6$	
SO ₂	ppb	$0 \leq C < 1$	$1 \leq C < 5$	$5 \leq C < 10$	$10 \leq C < 57$	$57 \leq C < 172$	$C \geq 172$	
NO ₂	ppb	$0 \leq C < 5$	$5 \leq C < 15$	$15 \leq C < 30$	$30 \leq C < 100$	$100 \leq C < 212$	$C \geq 212$	
H ₂ S	ppb	$0 \leq C < 1$	$1 \leq C < 3.6$	$3.6 \leq C < 5$	$5 \leq C < 8$	$8 \leq C < 10.8$	$C \geq 10.8$	
O ₃	ppb	$0 \leq C < 10$	$10 \leq C < 20$	$20 \leq C < 40$	$40 \leq C < 60$	$60 \leq C < 82$	$C \geq 82$	
PM _{2.5}	$\mu\text{g}/\text{m}^3$	$0 \leq C < 2$	$2 \leq C < 4$	$4 \leq C < 10$	$10 \leq C < 20$	$20 \leq C < 30$	$C \geq 30$	

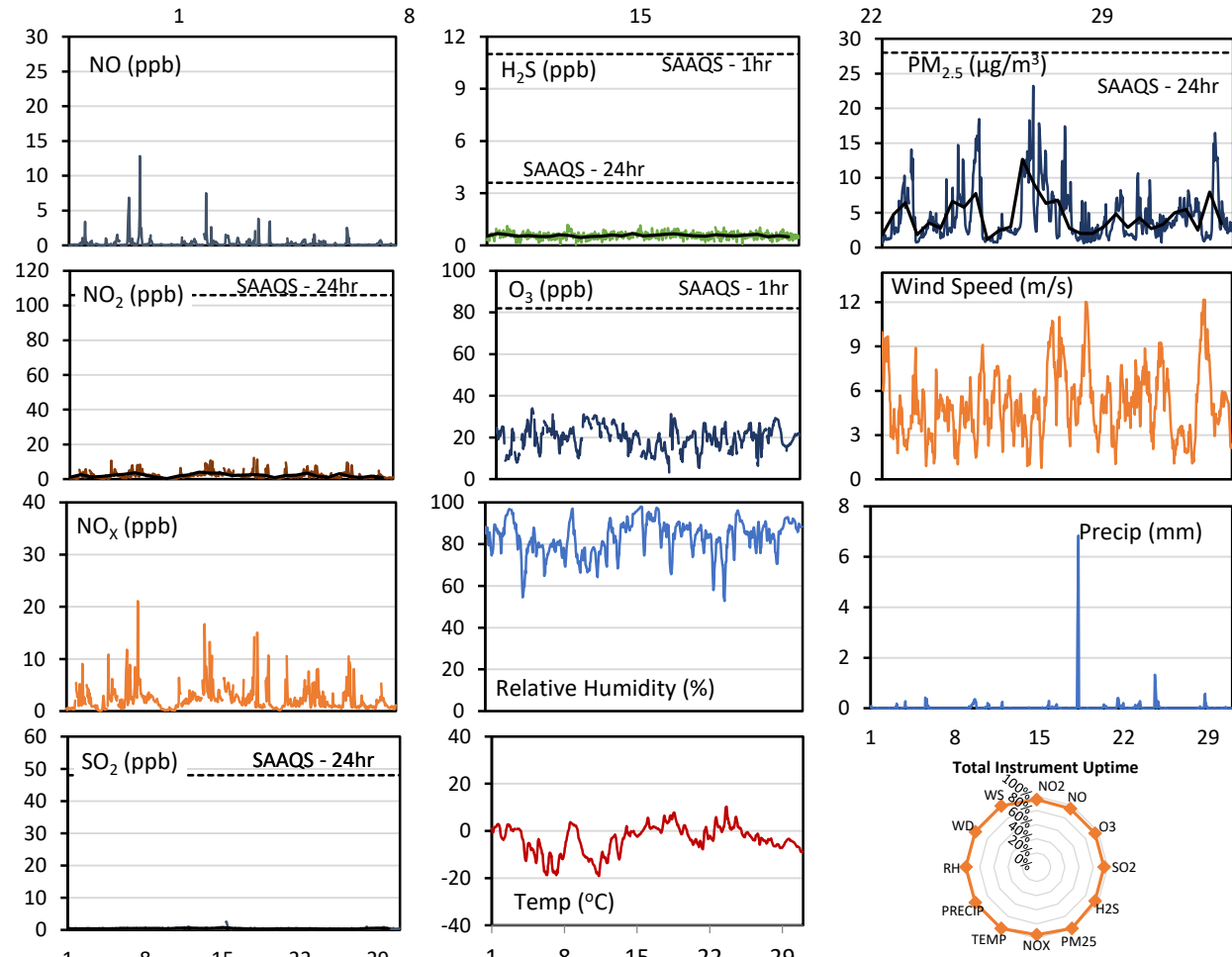
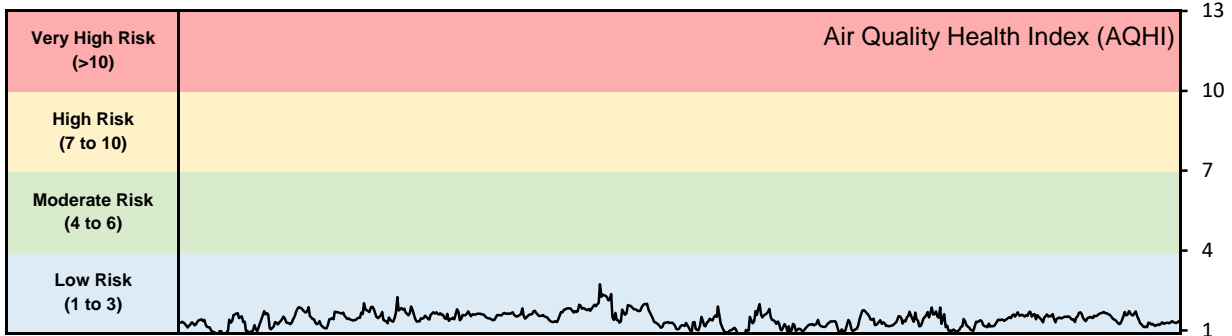
Monthly Update

- Achieved > 99% of scheduled uptime for all parameters
- Downtime of 4% due to routine daily internal zeroes and spans

GPAZ Pense Station - November 2019 Summary Report

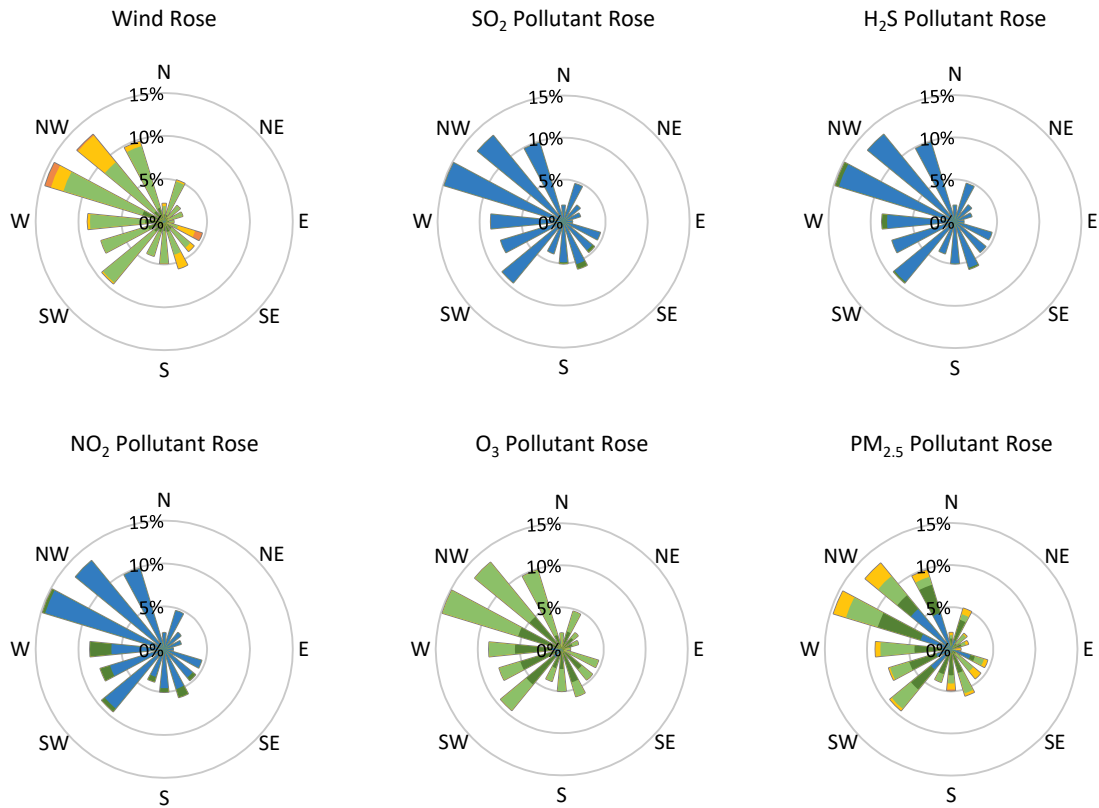
Pollutants		Month Records		24-Hour Records				1-Hour Records			
Name	Conc. Unit	Avg. Conc.	Total Uptime	Maximum		SAAQS Standard	Exceed Days	Maximum		SAAQS Standard	Exceed Hours
				Conc.	Time			Conc.	Time		
NO	ppb	0.3	95%	1.2	Nov-07	-	-	12.8	Nov-07 12:00	-	-
NO ₂	ppb	2.1	95%	4.0	Nov-13	106	0	12.2	Nov-18 02:00	159	0
NO _x	ppb	2.3	95%	4.7	Nov-07	-	-	21.1	Nov-07 12:00	-	-
SO ₂	ppb	0.4	95%	0.8	Nov-15	48	0	2.5	Nov-15 08:00	172	0
H ₂ S	ppb	0.6	95%	0.7	Nov-15	3.6	0	1.2	Nov-08 18:00	11	0
O ₃	ppb	20.0	95%	28.4	Nov-10	-	-	34.0	Nov-04 13:00	82	0
PM _{2.5}	µg/m ³	4.5	100%	12.7	Nov-13	28	0	23.2	Nov-13 22:00	-	-

SAAQS: Saskatchewan Ambient Air Quality Standards



* colored lines indicate 1-hr concentration data for all parameters; solid black lines indicate 24-hr concentrations for PM_{2.5}, NO₂, SO₂, and H₂S

GPAZ Pense Station - November 2019 Summary Report



Parameters	Unit	Color Code for Wind Speed and Pollution Concentration Class						
Wind Speed	m/s	$0.3 \leq WS < 1.4$	$1.4 \leq WS < 3.1$	$3.1 \leq WS < 7.8$	$7.8 \leq WS < 10.8$	$10.8 \leq WS < 13.6$	$WS \geq 13.6$	
SO ₂	ppb	$0 \leq C < 1$	$1 \leq C < 5$	$5 \leq C < 10$	$10 \leq C < 57$	$57 \leq C < 172$	$C \geq 172$	
NO ₂	ppb	$0 \leq C < 5$	$5 \leq C < 15$	$15 \leq C < 30$	$30 \leq C < 100$	$100 \leq C < 212$	$C \geq 212$	
H ₂ S	ppb	$0 \leq C < 1$	$1 \leq C < 3.6$	$3.6 \leq C < 5$	$5 \leq C < 8$	$8 \leq C < 10.8$	$C \geq 10.8$	
O ₃	ppb	$0 \leq C < 10$	$10 \leq C < 20$	$20 \leq C < 40$	$40 \leq C < 60$	$60 \leq C < 82$	$C \geq 82$	
PM _{2.5}	$\mu\text{g}/\text{m}^3$	$0 \leq C < 2$	$2 \leq C < 4$	$4 \leq C < 10$	$10 \leq C < 20$	$20 \leq C < 30$	$C \geq 30$	

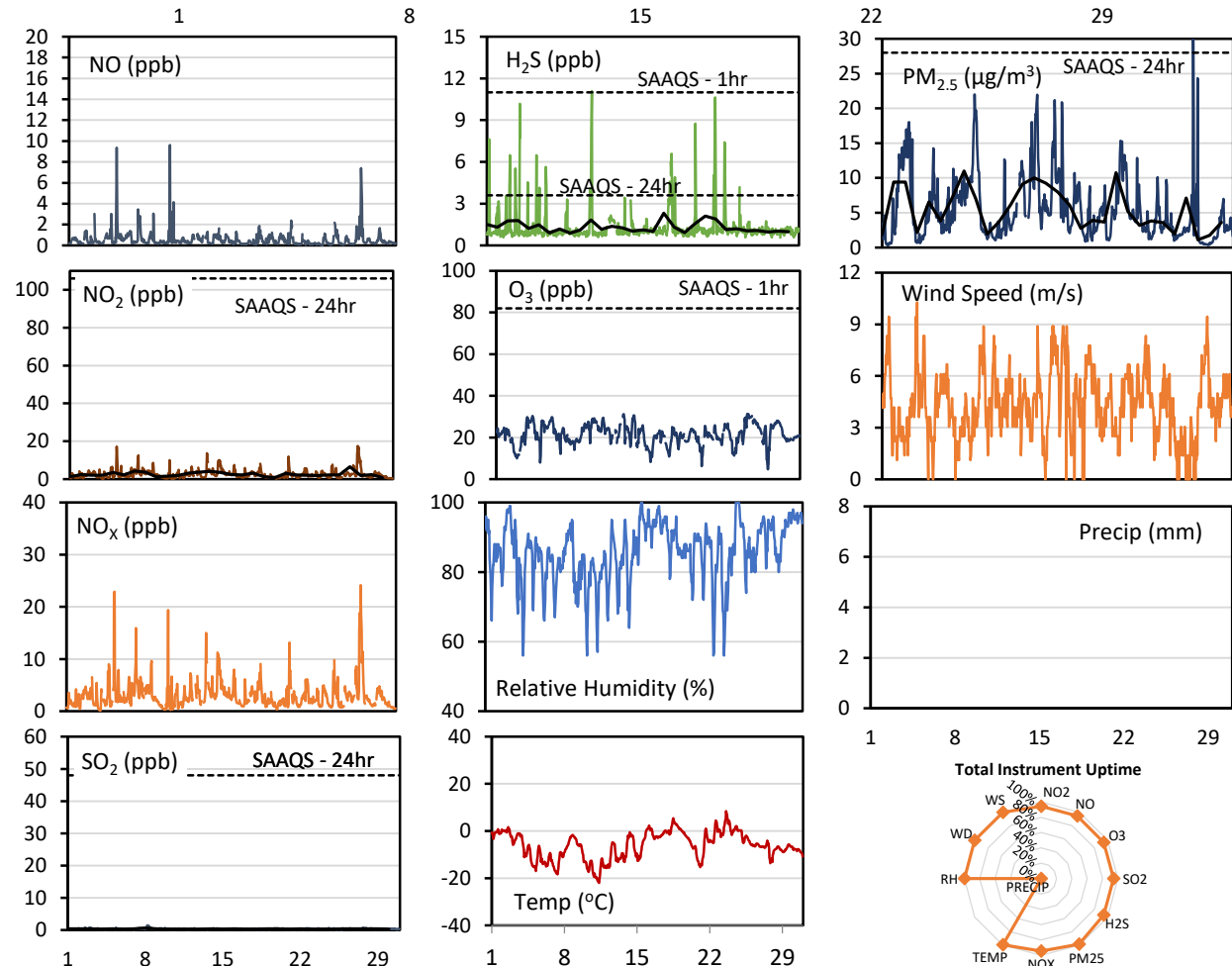
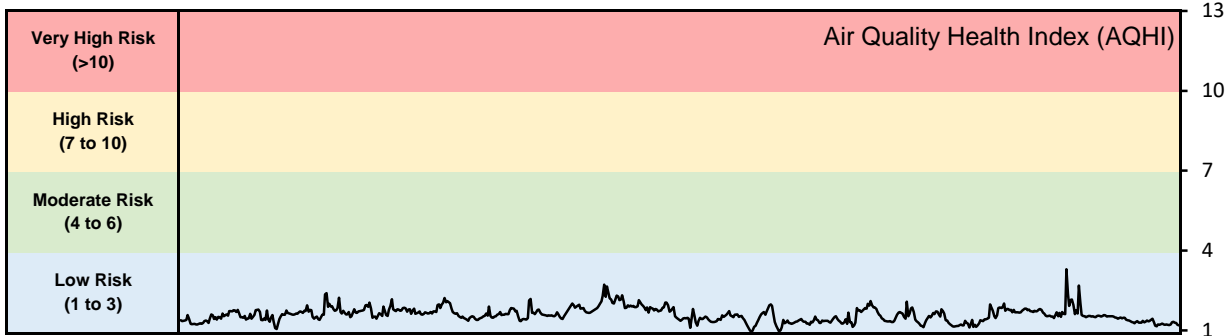
Monthly Update

- Achieved > 99% of scheduled uptime for all parameters
- Downtime of 4% due to routine daily internal zeroes and spans

GPAZ Yorkton Station - November 2019 Summary Report

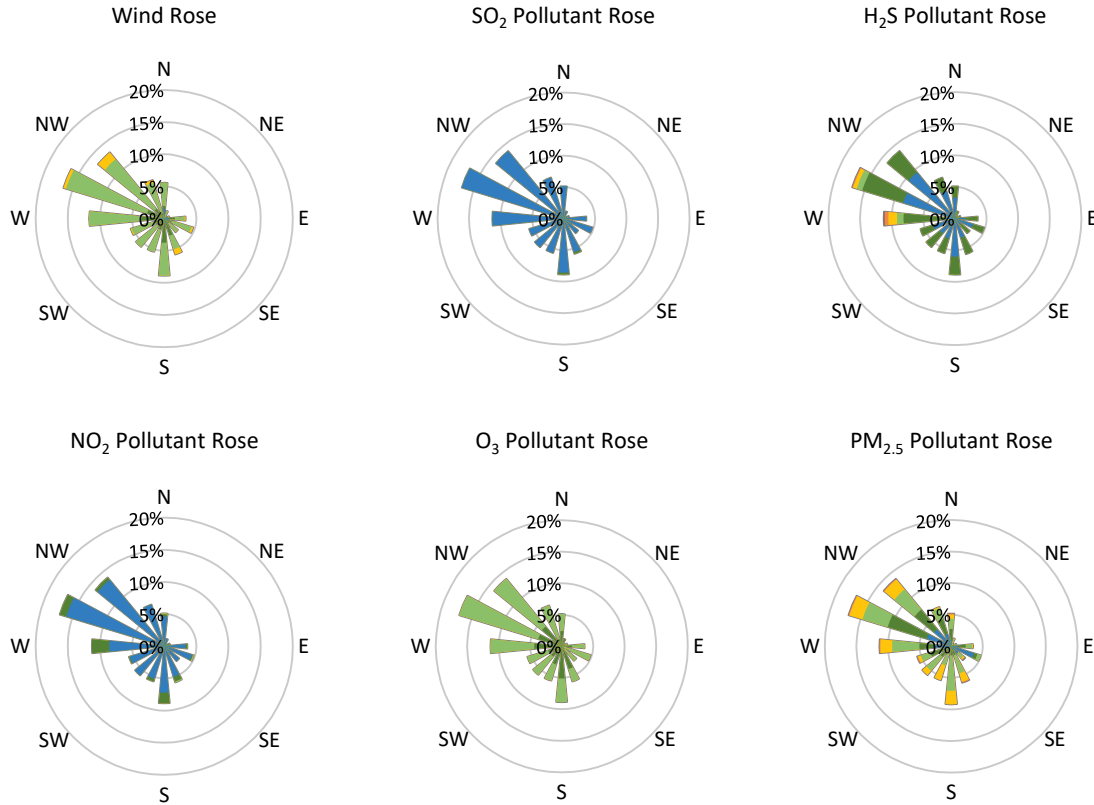
Pollutants		Month Records		24-Hour Records				1-Hour Records			
Name	Conc. Unit	Avg. Conc.	Total Uptime	Maximum		SAAQS Standard	Exceed Days	Maximum		SAAQS Standard	Exceed Hours
				Conc.	Time			Conc.	Time		
NO	ppb	0.6	94%	1.5	Nov-27	-	-	9.6	Nov-10 06:00	-	-
NO ₂	ppb	2.5	94%	6.5	Nov-27	106	0	17.5	Nov-27 17:00	159	0
NO _x	ppb	3.0	94%	8.1	Nov-27	-	-	24.2	Nov-27 19:00	-	-
SO ₂	ppb	0.3	94%	0.6	Nov-08	48	0	1.4	Nov-08 04:00	172	0
H ₂ S	ppb	1.3	94%	2.3	Nov-18	3.6	0	11.1	Nov-11 02:00	11	1
O ₃	ppb	21.4	94%	27.8	Nov-26	-	-	31.3	Nov-25 21:00	82	0
PM _{2.5}	µg/m ³	5.5	99%	11.0	Nov-08	28	0	38.7	Nov-27 14:00	-	-

SAAQS: Saskatchewan Ambient Air Quality Standards



* colored lines indicate 1-hr concentration data for all parameters; solid black lines indicate 24-hr concentrations for PM_{2.5}, NO₂, SO₂, and H₂S

GPAZ Yorkton Station - November 2019 Summary Report



Parameters	Unit	Color Code for Wind Speed and Pollution Concentration Class						
Wind Speed	m/s	0.3 ≤ WS < 1.4	1.4 ≤ WS < 3.1	3.1 ≤ WS < 7.8	7.8 ≤ WS < 10.8	10.8 ≤ WS < 13.6	WS ≥ 13.6	
SO ₂	ppb	0 ≤ C < 1	1 ≤ C < 5	5 ≤ C < 10	10 ≤ C < 57	57 ≤ C < 172	C ≥ 172	
NO ₂	ppb	0 ≤ C < 5	5 ≤ C < 15	15 ≤ C < 30	30 ≤ C < 100	100 ≤ C < 212	C ≥ 212	
H ₂ S	ppb	0 ≤ C < 1	1 ≤ C < 3.6	3.6 ≤ C < 5	5 ≤ C < 8	8 ≤ C < 10.8	C ≥ 10.8	
O ₃	ppb	0 ≤ C < 10	10 ≤ C < 20	20 ≤ C < 40	40 ≤ C < 60	60 ≤ C < 82	C ≥ 82	
PM _{2.5}	µg/m ³	0 ≤ C < 2	2 ≤ C < 4	4 ≤ C < 10	10 ≤ C < 20	20 ≤ C < 30	C ≥ 30	

Monthly Update

- Achieved > 94% of scheduled uptime for all parameters
- Downtime of 6% due to routine daily internal zeroes and spans, and quarterly calibrations
- Weather parameters taken from Environment Canada Historical Hourly Data

Exceedance Summary (1- Hour Average - Exceedances in Bold)

Exceedance Time	AQHI	NO ₂	NO	SO ₂	O ₃	NO _x	H ₂ S	PM _{2.5}	Temp	WD	WS
	-	ppb	ppb	ppb	ppb	ppb	ppb	µg/m ³	°C	deg	m/s
Nov-11 02:00	1.7	5.0	0.4	0.3	23.2	5.3	11.1	2.5	-19.9	280.0	3.1