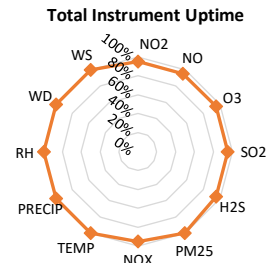
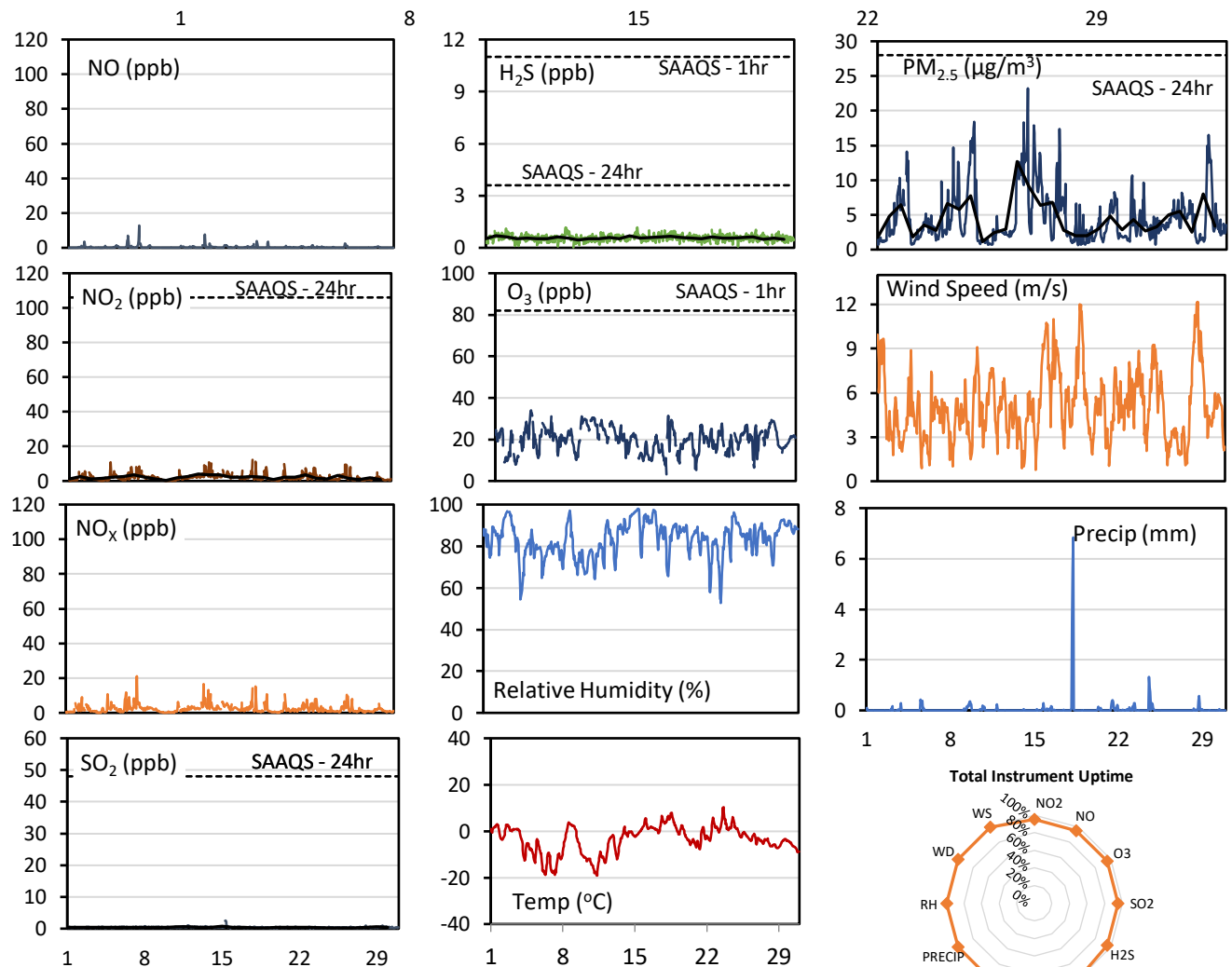
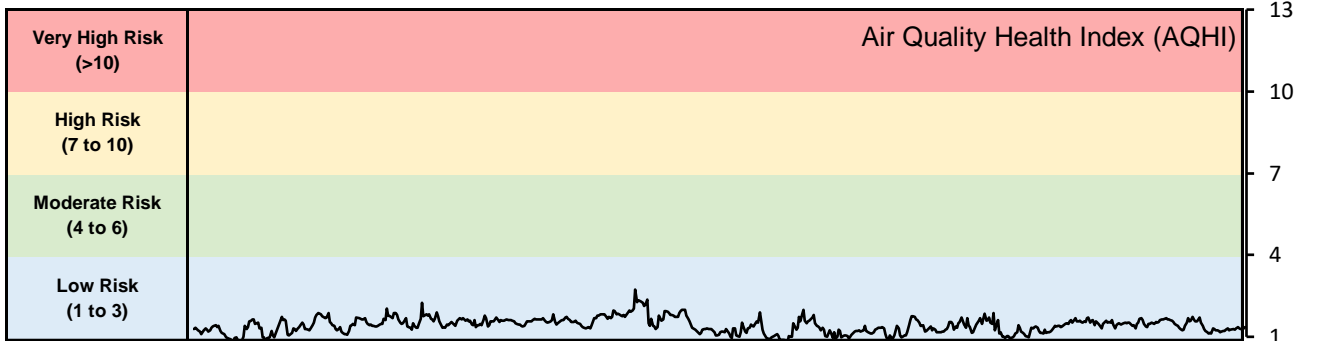


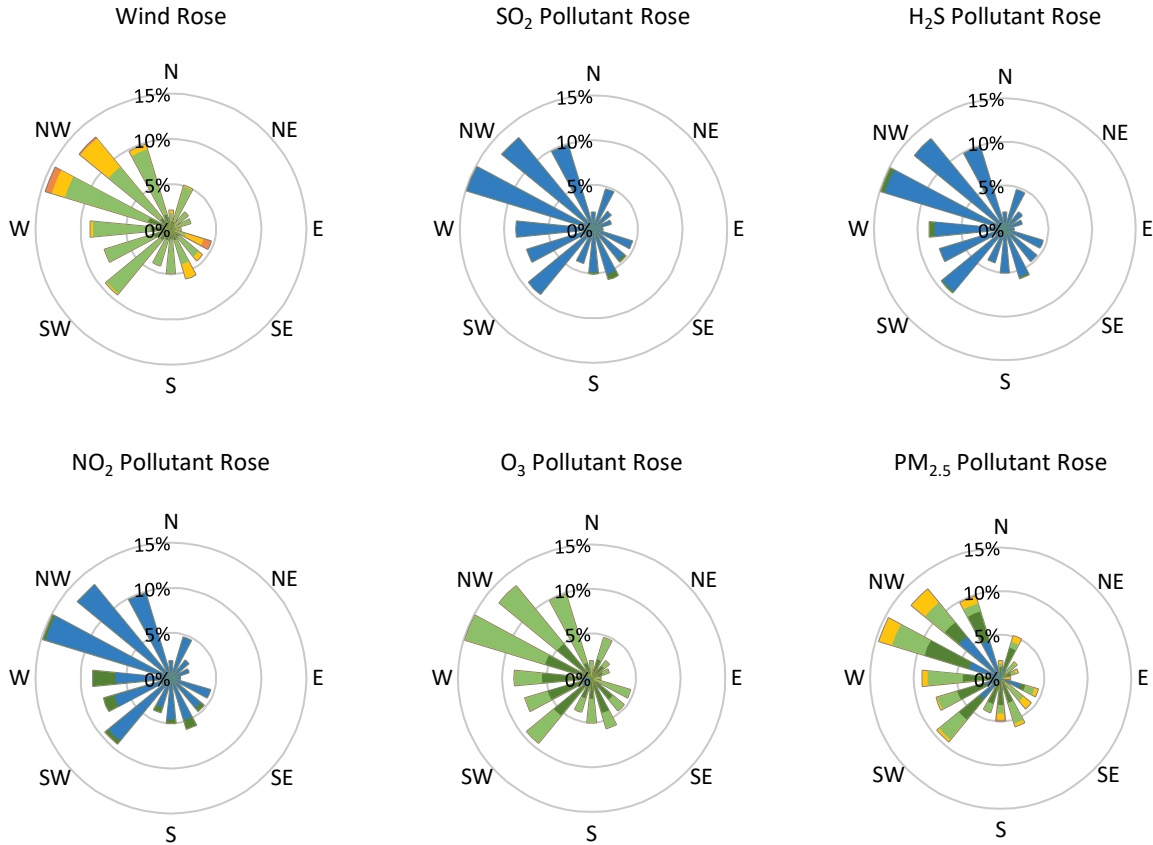
GPAZ Pense Station - November 2019 Summary Report

Pollutants		Month Records		24-Hour Records				1-Hour Records			
Name	Conc. Unit	Avg. Conc.	Total Uptime	Maximum		SAAQS Standard	Exceed Days	Maximum		SAAQS Standard	Exceed Hours
				Conc.	Time			Conc.	Time		
NO	ppb	0.3	95%	1.2	Nov-07	-	-	12.8	Nov-07 12:00	-	-
NO ₂	ppb	2.1	95%	4.0	Nov-13	106	0	12.2	Nov-18 02:00	159	0
NO _x	ppb	2.3	95%	4.7	Nov-07	-	-	21.1	Nov-07 12:00	-	-
SO ₂	ppb	0.4	95%	0.8	Nov-15	48	0	2.5	Nov-15 08:00	172	0
H ₂ S	ppb	0.6	95%	0.7	Nov-15	3.6	0	1.2	Nov-08 18:00	11	0
O ₃	ppb	20.0	95%	28.4	Nov-10	-	-	34.0	Nov-04 13:00	82	0
PM _{2.5}	µg/m ³	4.5	100%	12.7	Nov-13	28	0	23.2	Nov-13 22:00	-	-

SAAQS: Saskatchewan Ambient Air Quality Standards



GPAZ Pense Station - November 2019 Summary Report



Parameters	Unit	Color Code for Wind Speed and Pollution Concentration Class						
		$0.3 \leq WS < 1.4$	$1.4 \leq WS < 3.1$	$3.1 \leq WS < 7.8$	$7.8 \leq WS < 10.8$	$10.8 \leq WS < 13.6$	$WS \geq 13.6$	
SO ₂	ppb	$0 \leq C < 1$	$1 \leq C < 5$	$5 \leq C < 10$	$10 \leq C < 57$	$57 \leq C < 172$	$C \geq 172$	
NO ₂	ppb	$0 \leq C < 5$	$5 \leq C < 15$	$15 \leq C < 30$	$30 \leq C < 100$	$100 \leq C < 212$	$C \geq 212$	
H ₂ S	ppb	$0 \leq C < 1$	$1 \leq C < 3.6$	$3.6 \leq C < 5$	$5 \leq C < 8$	$8 \leq C < 10.8$	$C \geq 10.8$	
O ₃	ppb	$0 \leq C < 10$	$10 \leq C < 20$	$20 \leq C < 40$	$40 \leq C < 60$	$60 \leq C < 82$	$C \geq 82$	
PM _{2.5}	$\mu\text{g}/\text{m}^3$	$0 \leq C < 2$	$2 \leq C < 4$	$4 \leq C < 10$	$10 \leq C < 20$	$20 \leq C < 30$	$C \geq 30$	

Monthly Update

- Achieved > 99% of scheduled uptime for all parameters
- Downtime of 4% due to routine daily internal zeroes and spans