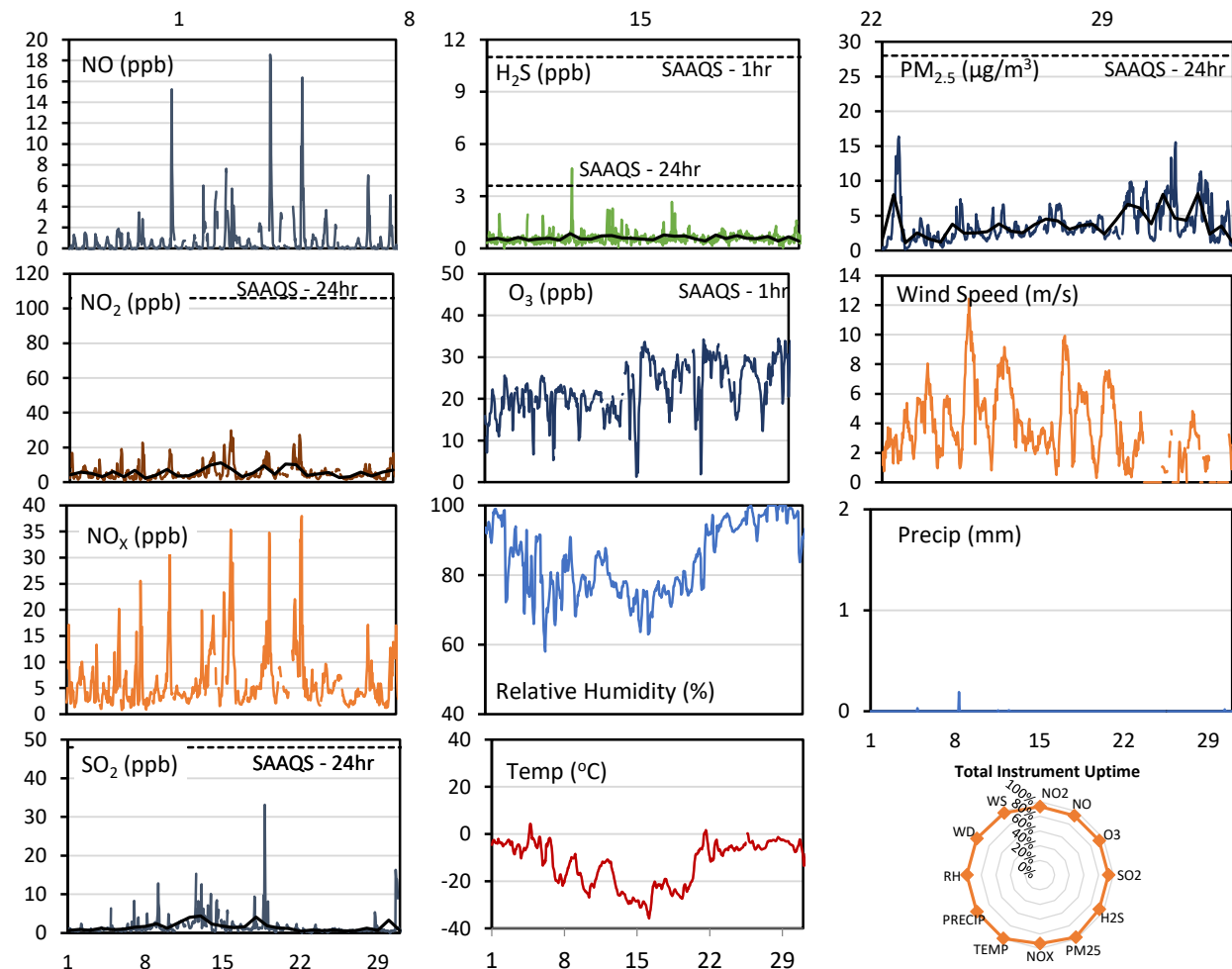
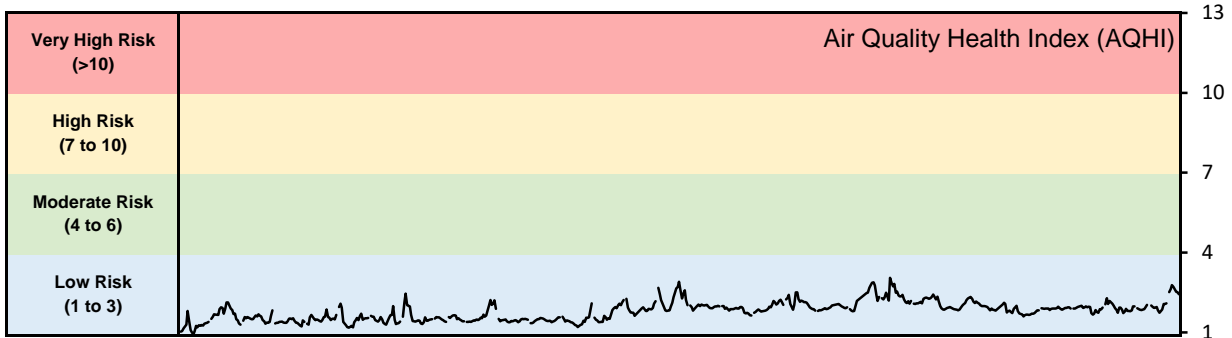


GPAZ Regina Station - January 2020 Summary Report

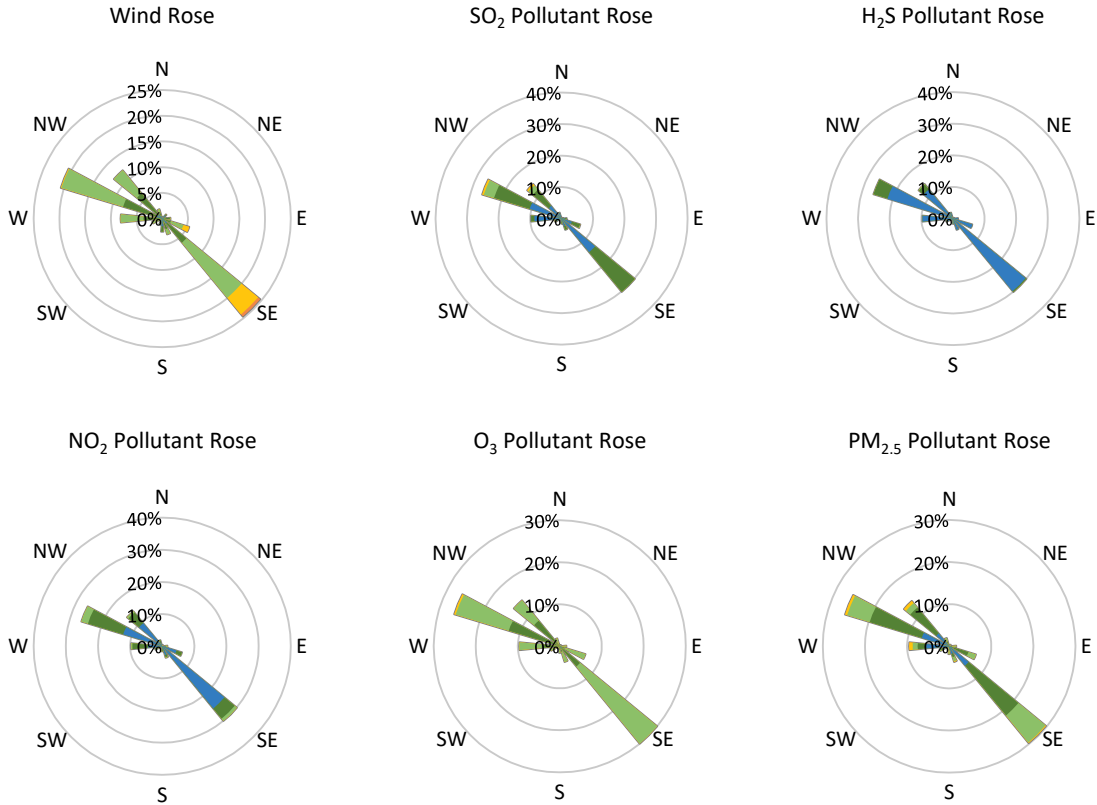
Pollutants		Month Records		24-Hour Records				1-Hour Records			
Name	Conc. Unit	Avg. Conc.	Total Uptime	Maximum		SAAQS Standard	Exceed Days	Maximum		SAAQS Standard	Exceed Hours
				Conc.	Time			Conc.	Time		
NO	ppb	0.8	93%	2.9	Jan-19	-	-	18.6	Jan-19 11:00	-	-
NO ₂	ppb	5.6	93%	11.1	Jan-15	106	0	29.8	Jan-15 23:00	159	0
NO _x	ppb	6.3	93%	12.9	Jan-15	-	-	38.0	Jan-22 10:00	-	-
SO ₂	ppb	1.6	93%	4.4	Jan-13	48	0	33.2	Jan-18 19:00	172	0
H ₂ S	ppb	0.6	93%	0.8	Jan-09	3.6	0	4.6	Jan-09 04:00	11	0
O ₃	ppb	22.6	94%	32.0	Jan-31	-	-	41.0	Jan-31 15:00	82	0
PM _{2.5}	µg/m ³	3.7	98%	8.2	Jan-28	28	0	16.4	Jan-02 10:00	-	-

SAAQS: Saskatchewan Ambient Air Quality Standards



* colored lines indicate 1-hr concentration data for all parameters; solid black lines indicate 24-hr concentrations for PM_{2.5}, NO₂, SO₂, and H₂S

GPAZ Regina Station - January 2020 Summary Report



Parameters	Unit	Color Code for Wind Speed and Pollution Concentration Class						
		0.3 ≤ WS < 1.4	1.4 ≤ WS < 3.1	3.1 ≤ WS < 7.8	7.8 ≤ WS < 10.8	10.8 ≤ WS < 13.6	WS ≥ 13.6	
SO ₂	ppb	0 ≤ C < 1	1 ≤ C < 5	5 ≤ C < 10	10 ≤ C < 57	57 ≤ C < 172	C ≥ 172	
NO ₂	ppb	0 ≤ C < 5	5 ≤ C < 15	15 ≤ C < 30	30 ≤ C < 100	100 ≤ C < 212	C ≥ 212	
H ₂ S	ppb	0 ≤ C < 1	1 ≤ C < 3.6	3.6 ≤ C < 5	5 ≤ C < 8	8 ≤ C < 10.8	C ≥ 10.8	
O ₃	ppb	0 ≤ C < 10	10 ≤ C < 20	20 ≤ C < 40	40 ≤ C < 60	60 ≤ C < 82	C ≥ 82	
PM _{2.5}	μg/m ³	0 ≤ C < 2	2 ≤ C < 4	4 ≤ C < 10	10 ≤ C < 20	20 ≤ C < 30	C ≥ 30	

Monthly Update

- Achieved >97.7% of scheduled uptime on all parameters
- Downtime of <7% on other parameters due to routine daily zeros and spans and non-routine maintenance