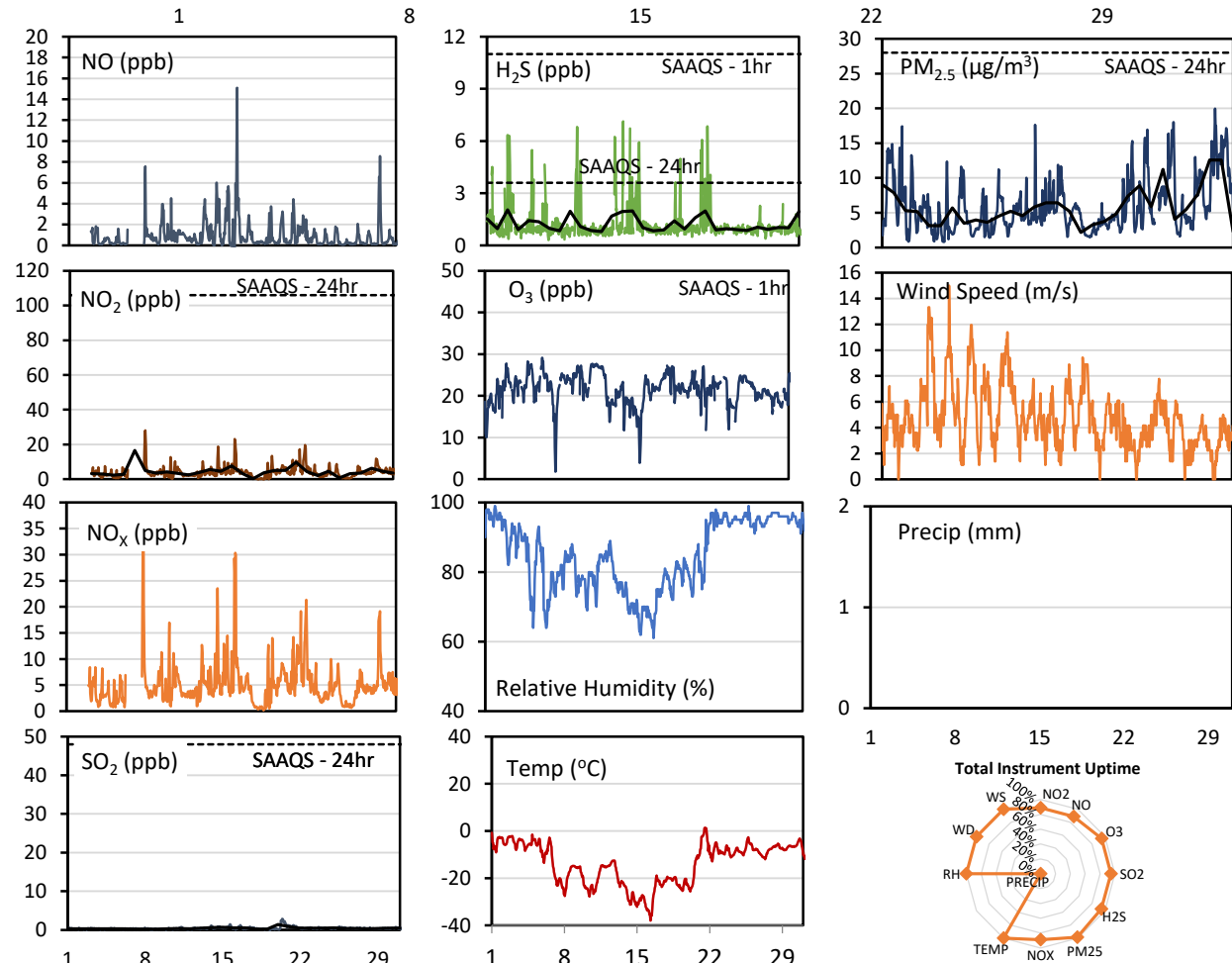
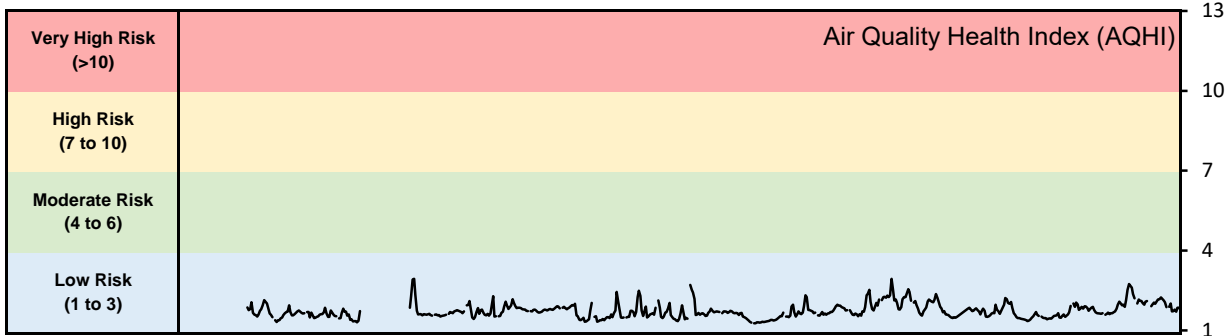


## GPAZ Yorkton Station - January 2020 Summary Report

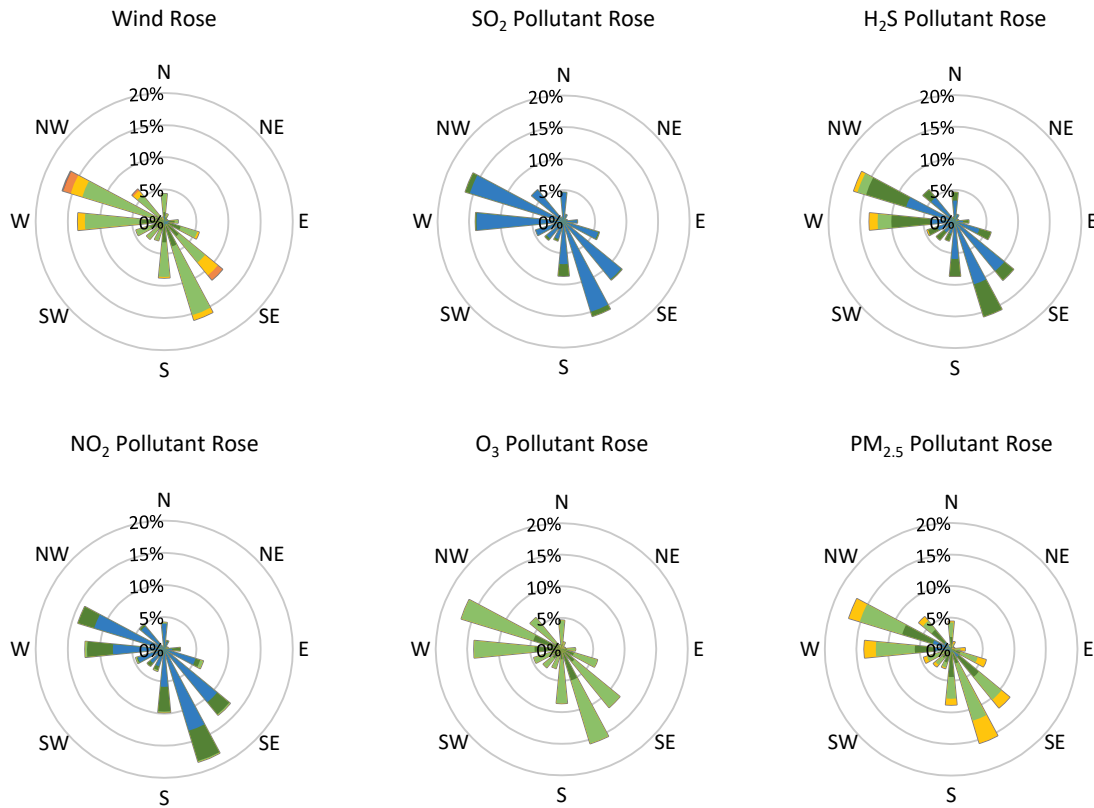
Pollutants		Month Records		24-Hour Records				1-Hour Records			
Name	Conc. Unit	Avg. Conc.	Total Uptime	Maximum		SAAQS Standard	Exceed Days	Maximum		SAAQS Standard	Exceed Hours
				Conc.	Time			Conc.	Time		
NO	ppb	0.9	89%	2.7	Jan-16	-	-	15.1	Jan-16 10:00	-	-
NO <sub>2</sub>	ppb	4.0	89%	16.5	Jan-07	106	0	28.1	Jan-08 00:00	159	0
NO <sub>x</sub>	ppb	5.1	89%	19.2	Jan-07	-	-	35.9	Jan-08 00:00	-	-
SO <sub>2</sub>	ppb	0.4	95%	1.4	Jan-20	48	0	2.9	Jan-20 09:00	172	0
H <sub>2</sub> S	ppb	1.2	94%	2.0	Jan-03	3.6	0	7.1	Jan-14 02:00	11	0
O <sub>3</sub>	ppb	21.6	95%	26.5	Jan-31	-	-	29.1	Jan-06 16:00	82	0
PM <sub>2.5</sub>	µg/m <sup>3</sup>	5.8	99%	12.6	Jan-29	28	0	20.0	Jan-29 11:00	-	-

SAAQS: Saskatchewan Ambient Air Quality Standards



\* colored lines indicate 1-hr concentration data for all parameters; solid black lines indicate 24-hr concentrations for PM<sub>2.5</sub>, NO<sub>2</sub>, SO<sub>2</sub>, and H<sub>2</sub>S

**GPAZ Yorkton Station - January 2020 Summary Report**



Parameters	Unit	Color Code for Wind Speed and Pollution Concentration Class						
Wind Speed	m/s	0.3 ≤ WS < 1.4	1.4 ≤ WS < 3.1	3.1 ≤ WS < 7.8	7.8 ≤ WS < 10.8	10.8 ≤ WS < 13.6	WS ≥ 13.6	
SO <sub>2</sub>	ppb	0 ≤ C < 1	1 ≤ C < 5	5 ≤ C < 10	10 ≤ C < 57	57 ≤ C < 172	C ≥ 172	
NO <sub>2</sub>	ppb	0 ≤ C < 5	5 ≤ C < 15	15 ≤ C < 30	30 ≤ C < 100	100 ≤ C < 212	C ≥ 212	
H <sub>2</sub> S	ppb	0 ≤ C < 1	1 ≤ C < 3.6	3.6 ≤ C < 5	5 ≤ C < 8	8 ≤ C < 10.8	C ≥ 10.8	
O <sub>3</sub>	ppb	0 ≤ C < 10	10 ≤ C < 20	20 ≤ C < 40	40 ≤ C < 60	60 ≤ C < 82	C ≥ 82	
PM <sub>2.5</sub>	µg/m <sup>3</sup>	0 ≤ C < 2	2 ≤ C < 4	4 ≤ C < 10	10 ≤ C < 20	20 ≤ C < 30	C ≥ 30	

**Monthly Update**

- Achieved >92% of scheduled uptime for all parameters except Precipitation which could not be obtained from Environment Canada
- Downtime of <12% all parameters except Precip(<23%) from operational issues with replacement NOx analyzer and due to routine daily internal zeroes and spans
- Weather parameters taken from Environment Canada Historical Hourly Data