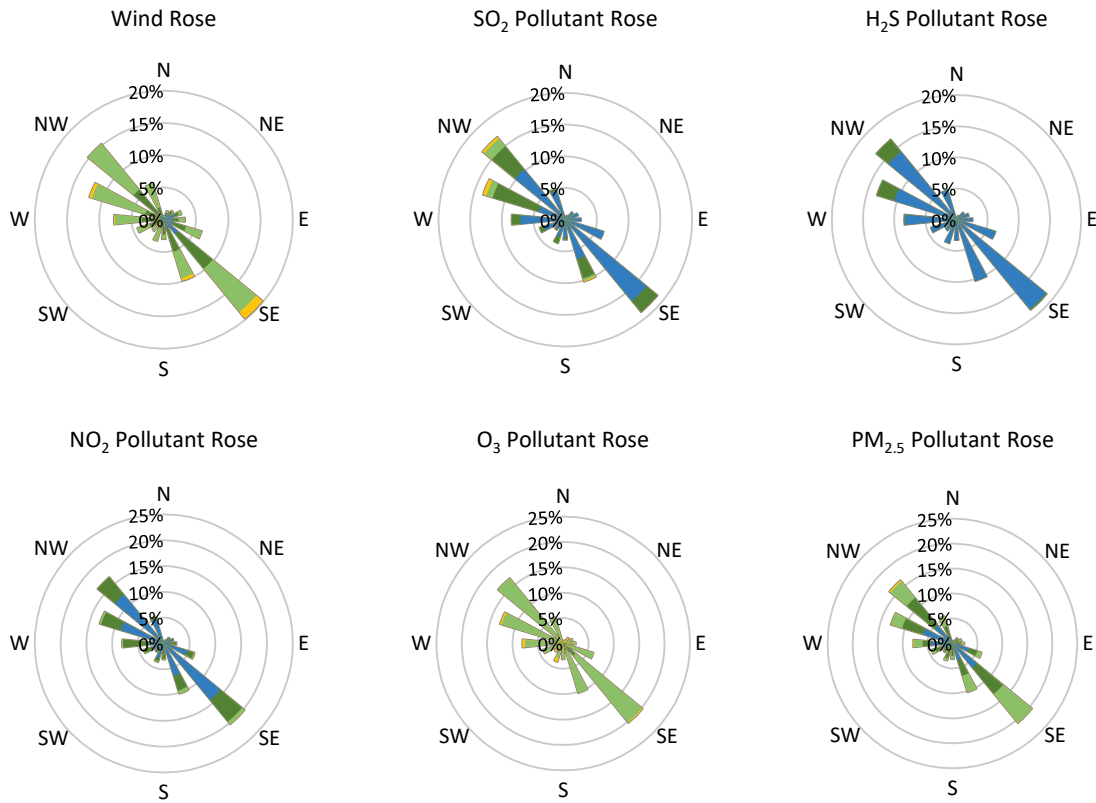








**GPAZ Regina Station - February 2020 Summary Report**



Parameters	Unit	Color Code for Wind Speed and Pollution Concentration Class						
Wind Speed	m/s	$0.3 \leq WS < 1.4$	$1.4 \leq WS < 3.1$	$3.1 \leq WS < 7.8$	$7.8 \leq WS < 10.8$	$10.8 \leq WS < 13.6$	$WS \geq 13.6$	
SO <sub>2</sub>	ppb	$0 \leq C < 1$	$1 \leq C < 5$	$5 \leq C < 10$	$10 \leq C < 57$	$57 \leq C < 172$	$C \geq 172$	
NO <sub>2</sub>	ppb	$0 \leq C < 5$	$5 \leq C < 15$	$15 \leq C < 30$	$30 \leq C < 100$	$100 \leq C < 212$	$C \geq 212$	
H <sub>2</sub> S	ppb	$0 \leq C < 1$	$1 \leq C < 3.6$	$3.6 \leq C < 5$	$5 \leq C < 8$	$8 \leq C < 10.8$	$C \geq 10.8$	
O <sub>3</sub>	ppb	$0 \leq C < 10$	$10 \leq C < 20$	$20 \leq C < 40$	$40 \leq C < 60$	$60 \leq C < 82$	$C \geq 82$	
PM <sub>2.5</sub>	µg/m <sup>3</sup>	$0 \leq C < 2$	$2 \leq C < 4$	$4 \leq C < 10$	$10 \leq C < 20$	$20 \leq C < 30$	$C \geq 30$	

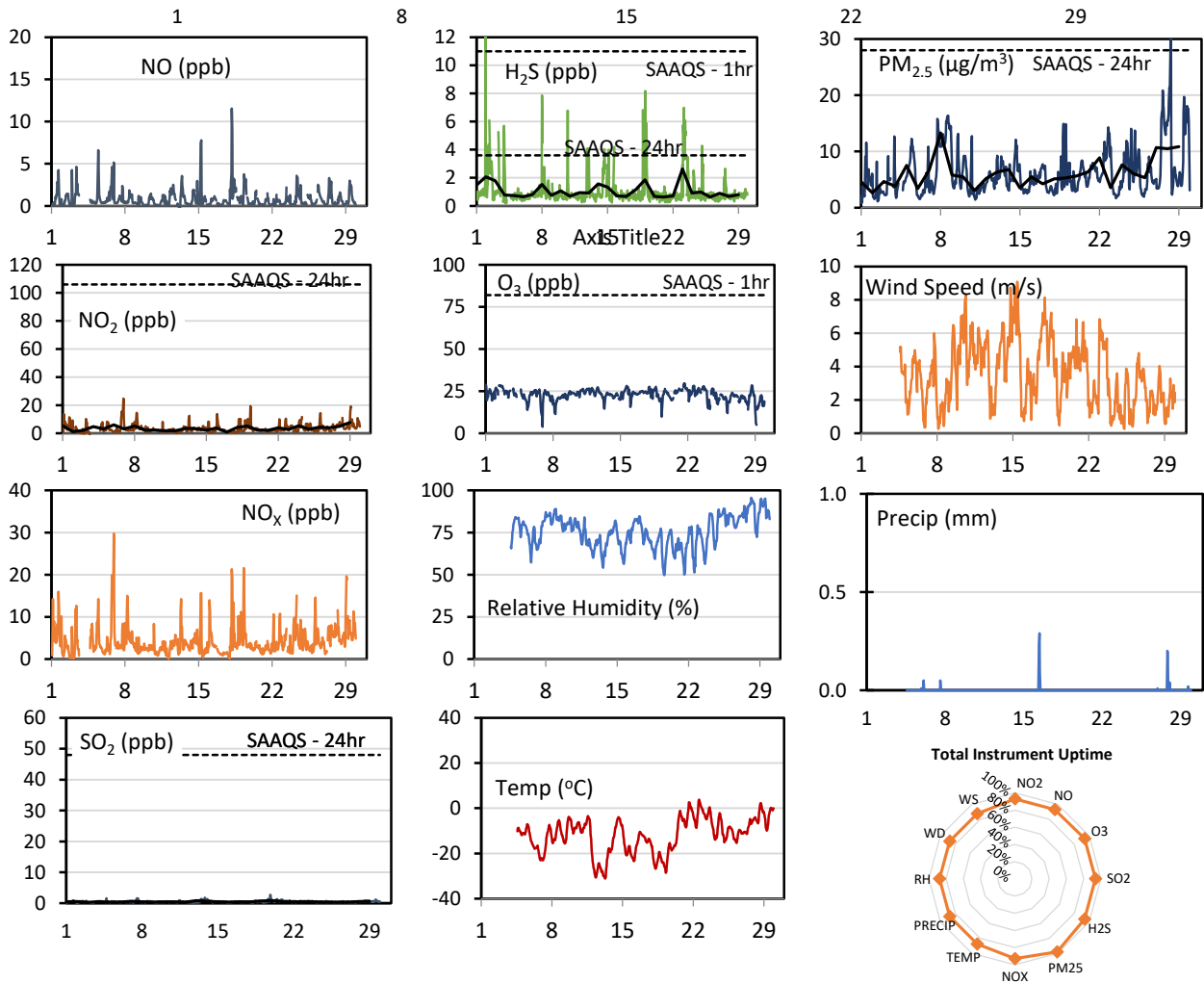
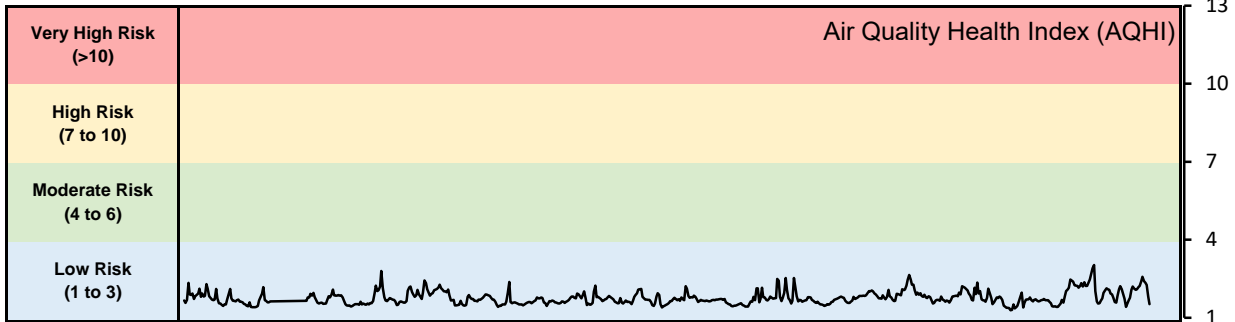
**Monthly Update**

- Achieved >90.2% of scheduled uptime for all gaseous parameters and 100% for the weather parameters
- Downtime of <9.8% due to routine daily internal zeroes and spans, and quarterly calibrations

## GPAZ Yorkton Station - February 2020 Summary Report

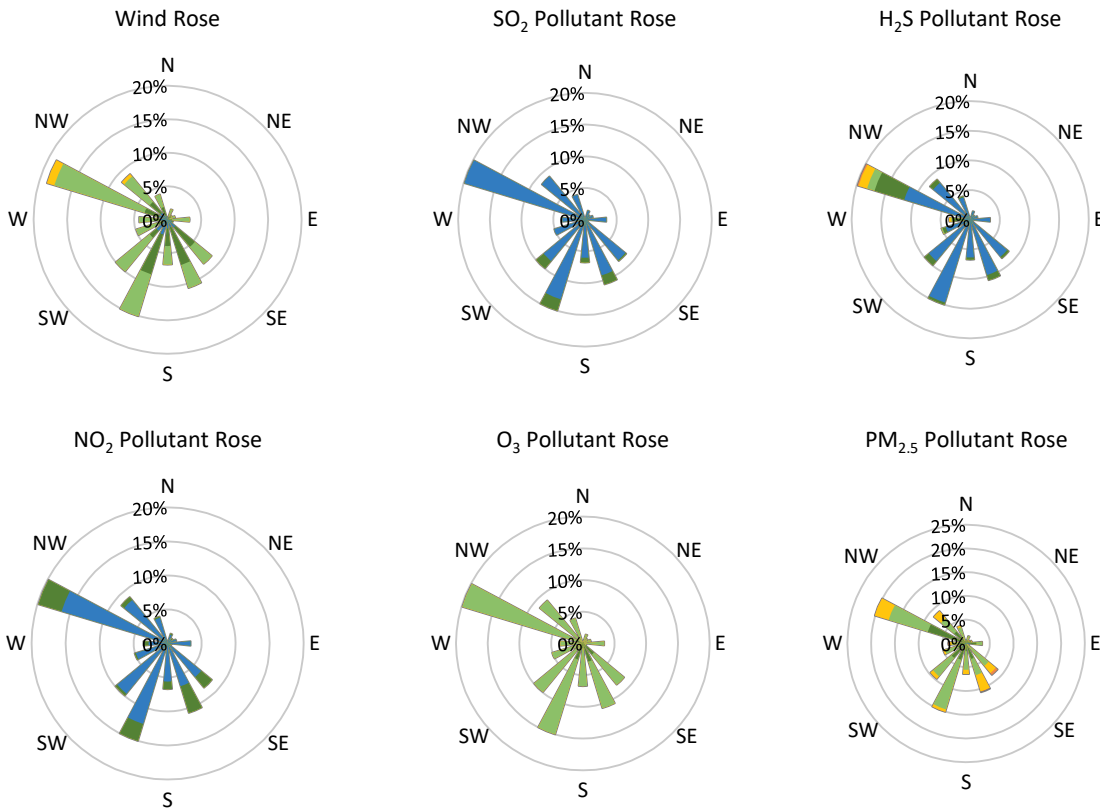
Pollutants		Month Records		24-Hour Records				1-Hour Records			
Name	Conc. Unit	Avg. Conc.	Total Uptime	Maximum		SAAQS Standard	Exceed Days	Maximum		SAAQS Standard	Exceed Hours
				Conc.	Time			Conc.	Time		
NO	ppb	0.8	93%	2.3	Feb-18	-	-	11.6	Feb-18 04:00	-	-
NO <sub>2</sub>	ppb	3.5	93%	7.7	Feb-29	106	0	24.7	Feb-06 22:00	159	0
NO <sub>x</sub>	ppb	4.2	93%	8.6	Feb-29	-	-	29.8	Feb-06 22:00	-	-
SO <sub>2</sub>	ppb	0.5	94%	0.8	Feb-20	48	0	2.7	Feb-19 20:00	172	0
H <sub>2</sub> S	ppb	1.1	94%	2.6	Feb-23	3.6	0	13.9	Feb-01 23:00	11	1
O <sub>3</sub>	ppb	22.7	94%	26.7	Feb-02	-	-	29.7	Feb-21 16:00	82	0
PM <sub>2.5</sub>	µg/m <sup>3</sup>	6.2	98%	13.3	Feb-08	28	0	34.3	Feb-28 07:00	-	-

SAAQS: Saskatchewan Ambient Air Quality Standards



\* colored lines indicate 1-hr concentration data for all parameters; solid black lines indicate 24-hr concentrations for PM<sub>2.5</sub>, NO<sub>2</sub>, SO<sub>2</sub>, and H<sub>2</sub>S

**GPAZ Yorkton Station - February 2020 Summary Report**



Parameters	Unit	Color Code for Wind Speed and Pollution Concentration Class							
Wind Speed	m/s	$0.3 \leq WS < 1.4$	$1.4 \leq WS < 3.1$	$3.1 \leq WS < 7.8$	$7.8 \leq WS < 10.8$	$10.8 \leq WS < 13.6$	$13.6 \leq WS < 17.2$	$17.2 \leq WS < 21.2$	$WS \geq 21.2$
SO <sub>2</sub>	ppb	$0 \leq C < 1$	$1 \leq C < 5$	$5 \leq C < 10$	$10 \leq C < 57$	$57 \leq C < 172$	$172 \leq C < 212$	$212 \leq C < 300$	$C \geq 300$
NO <sub>2</sub>	ppb	$0 \leq C < 5$	$5 \leq C < 15$	$15 \leq C < 30$	$30 \leq C < 100$	$100 \leq C < 212$	$212 \leq C < 300$	$300 \leq C < 500$	$C \geq 500$
H <sub>2</sub> S	ppb	$0 \leq C < 1$	$1 \leq C < 3.6$	$3.6 \leq C < 5$	$5 \leq C < 8$	$8 \leq C < 10.8$	$10.8 \leq C < 13.6$	$13.6 \leq C < 17.2$	$C \geq 17.2$
O <sub>3</sub>	ppb	$0 \leq C < 10$	$10 \leq C < 20$	$20 \leq C < 40$	$40 \leq C < 60$	$60 \leq C < 82$	$82 \leq C < 100$	$100 \leq C < 150$	$C \geq 150$
PM <sub>2.5</sub>	µg/m <sup>3</sup>	$0 \leq C < 2$	$2 \leq C < 4$	$4 \leq C < 10$	$10 \leq C < 20$	$20 \leq C < 30$	$30 \leq C < 50$	$50 \leq C < 100$	$C \geq 100$

**Monthly Update**

- Achieved >92.8% of scheduled uptime for gaseous parameters and 87.6% for the weather parameters
- Downtime of <8% due to routine daily internal zeroes and spans and quarterly calibration
- The weather sensor was installed on February 04, 2020

**Exceedance Summary (1- Hour Average - Exceedances Highlighted)**

Exceedance Time	AQHI	NO <sub>2</sub>	NO	SO <sub>2</sub>	O <sub>3</sub>	NO <sub>x</sub>	H <sub>2</sub> S	PM <sub>2.5</sub>	Temp	WD	WS
	-	ppb	ppb	ppb	ppb	ppb	ppb	µg/m <sup>3</sup>	°C	deg	m/s
Feb-01 23:00	2.1	9.1	0.8	0.4	20.5	10.1	13.9	6.0	-	-	-