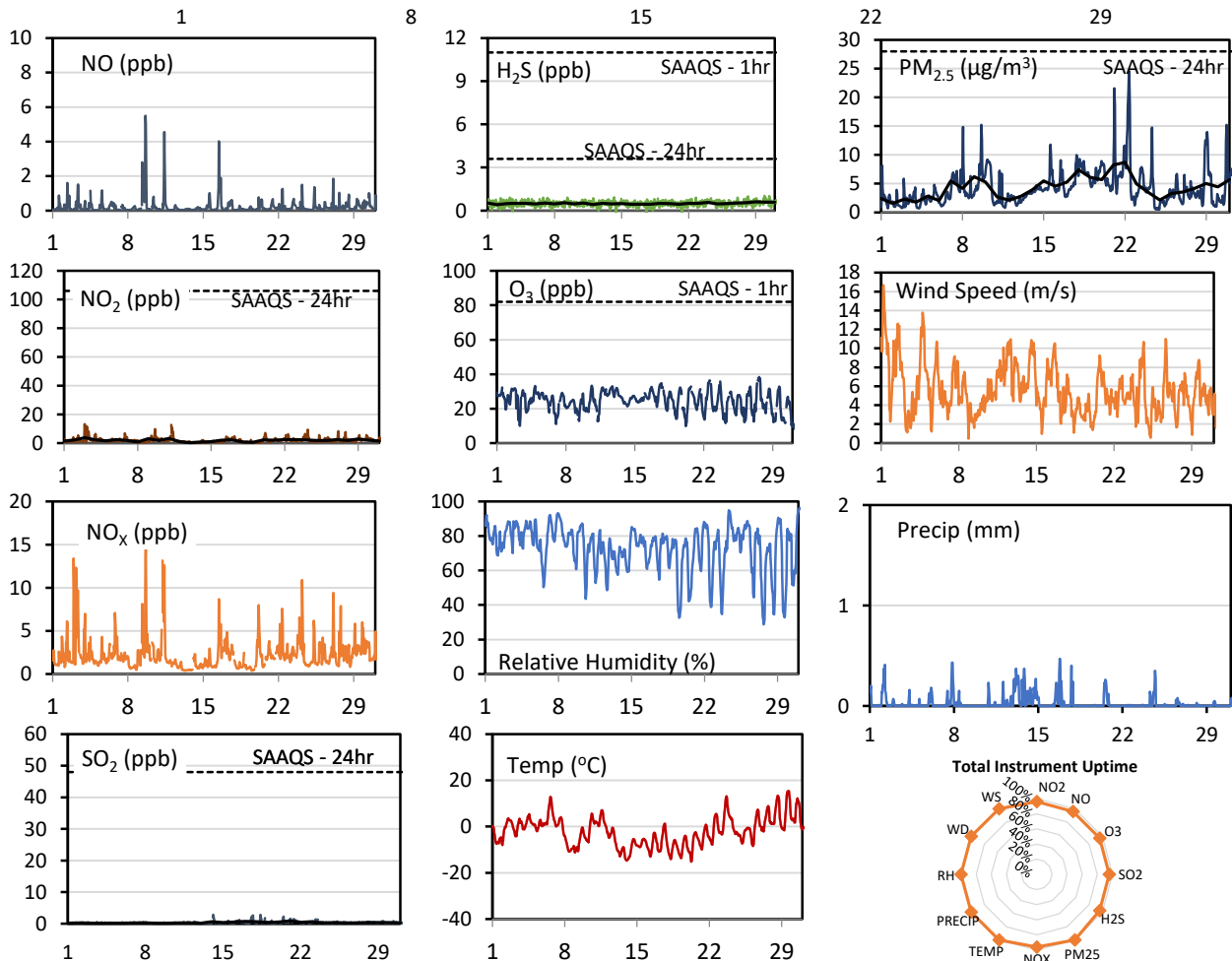


GPAZ Pense Station - March 2020 Summary Report

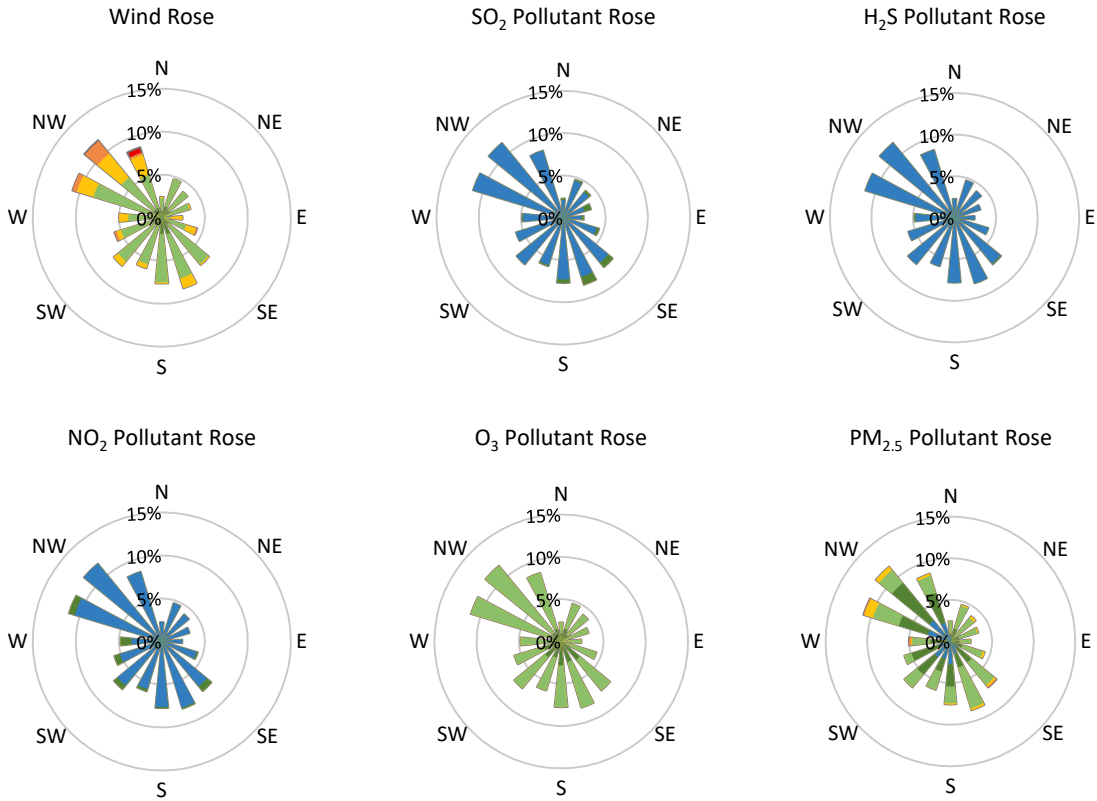
Pollutants		Month Records		24-Hour Records				1-Hour Records			
Name	Conc. Unit	Avg. Conc.	Total Uptime	Maximum		SAAQS Standard	Exceed Days	Maximum		SAAQS Standard	Exceed Hours
				Conc.	Time			Conc.	Time		
NO	ppb	0.2	96%	1.0	Mar-09	-	-	5.5	Mar-09 15:00	-	-
NO ₂	ppb	1.9	96%	3.8	Mar-03	106	0	13.2	Mar-02 23:00	159	0
NO _x	ppb	2.2	96%	4.2	Mar-09	-	-	14.9	Mar-09 16:00	-	-
SO ₂	ppb	0.3	96%	0.9	Mar-21	48	0	2.8	Mar-14 03:00	172	0
H ₂ S	ppb	0.5	96%	0.6	Mar-29	3.6	0	1.0	Mar-29 22:00	11	0
O ₃	ppb	24.1	96%	29.7	Mar-12	-	-	38.4	Mar-27 15:00	82	0
PM _{2.5}	µg/m ³	4.3	100%	8.7	Mar-22	28	0	24.6	Mar-22 08:00	-	-

SAAQS: Saskatchewan Ambient Air Quality Standards



* colored lines indicate 1-hr concentration data for all parameters; solid black lines indicate 24-hr concentrations for PM_{2.5}, NO₂, SO₂, and H₂S

GPAZ Pense Station - March 2020 Summary Report



Parameters	Unit	Color Code for Wind Speed and Pollution Concentration Class						
Wind Speed	m/s	$0.3 \leq WS < 1.4$	$1.4 \leq WS < 3.1$	$3.1 \leq WS < 7.8$	$7.8 \leq WS < 10.8$	$10.8 \leq WS < 13.6$	$WS \geq 13.6$	
SO ₂	ppb	$0 \leq C < 1$	$1 \leq C < 5$	$5 \leq C < 10$	$10 \leq C < 57$	$57 \leq C < 172$	$C \geq 172$	
NO ₂	ppb	$0 \leq C < 5$	$5 \leq C < 15$	$15 \leq C < 30$	$30 \leq C < 100$	$100 \leq C < 212$	$C \geq 212$	
H ₂ S	ppb	$0 \leq C < 1$	$1 \leq C < 3.6$	$3.6 \leq C < 5$	$5 \leq C < 8$	$8 \leq C < 10.8$	$C \geq 10.8$	
O ₃	ppb	$0 \leq C < 10$	$10 \leq C < 20$	$20 \leq C < 40$	$40 \leq C < 60$	$60 \leq C < 82$	$C \geq 82$	
PM _{2.5}	µg/m ³	$0 \leq C < 2$	$2 \leq C < 4$	$4 \leq C < 10$	$10 \leq C < 20$	$20 \leq C < 30$	$C \geq 30$	

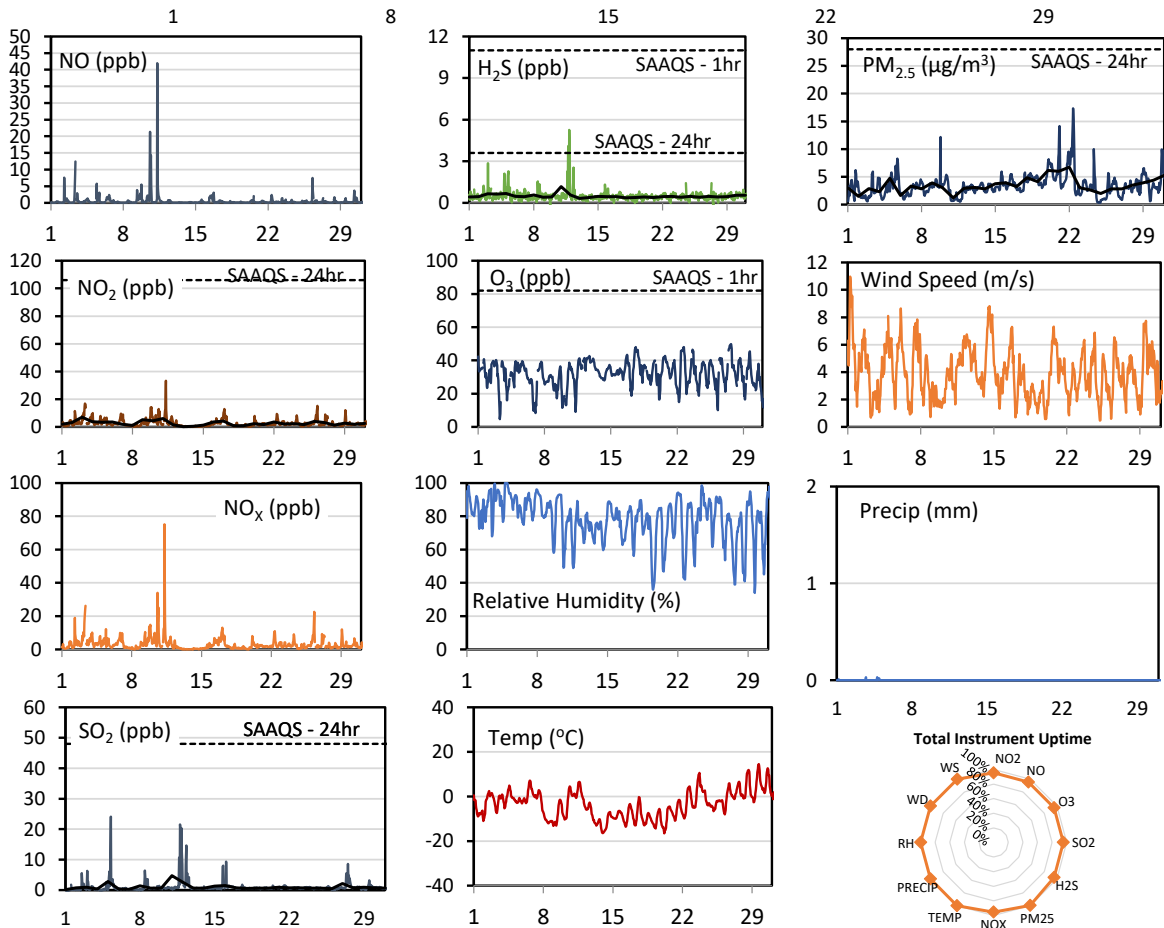
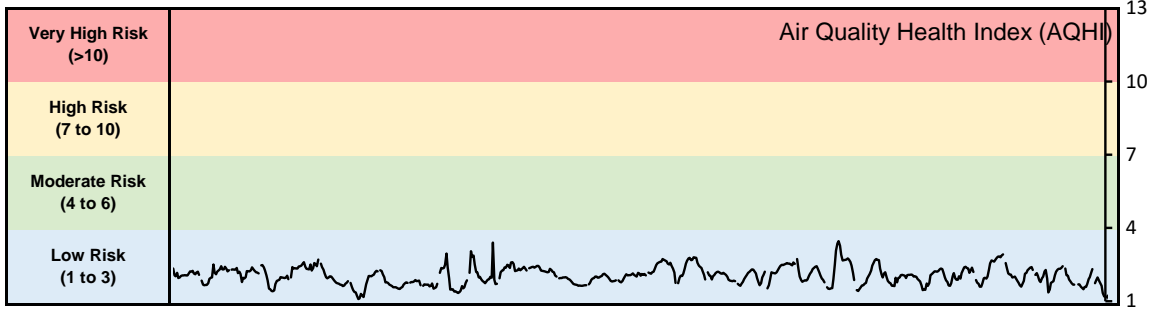
Monthly Update

- Achieved at least 95.7% of scheduled uptime for all parameters
- Downtime of <5% due to routine daily internal zeroes and spans, and quarterly calibration

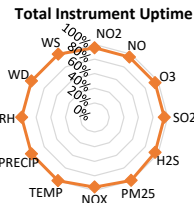
GPAZ Regina Station - March 2020 Summary Report

Pollutants		Month Records		24-Hour Records				1-Hour Records			
Name	Conc. Unit	Avg. Conc.	Total Uptime	Maximum		SAAQS Standard	Exceed Days	Maximum		SAAQS Standard	Exceed Hours
				Conc.	Time			Conc.	Time		
NO	ppb	0.6	95%	2.7	Mar-10	-	-	42.0	Mar-11 07:00	-	-
NO ₂	ppb	2.7	95%	7.0	Mar-03	106	0	33.3	Mar-11 07:00	159	0
NO _x	ppb	3.1	95%	8.6	Mar-11	-	-	75.2	Mar-11 07:00	-	-
SO ₂	ppb	1.0	95%	4.7	Mar-11	48	0	24.1	Mar-05 06:00	172	0
H ₂ S	ppb	0.5	96%	1.2	Mar-11	3.6	0	5.3	Mar-11 21:00	11	0
O ₃	ppb	31.6	95%	39.9	Mar-12	-	-	49.8	Mar-27 17:00	82	0
PM _{2.5}	µg/m ³	3.5	100%	6.7	Mar-22	28	0	17.4	Mar-22 09:00	-	-

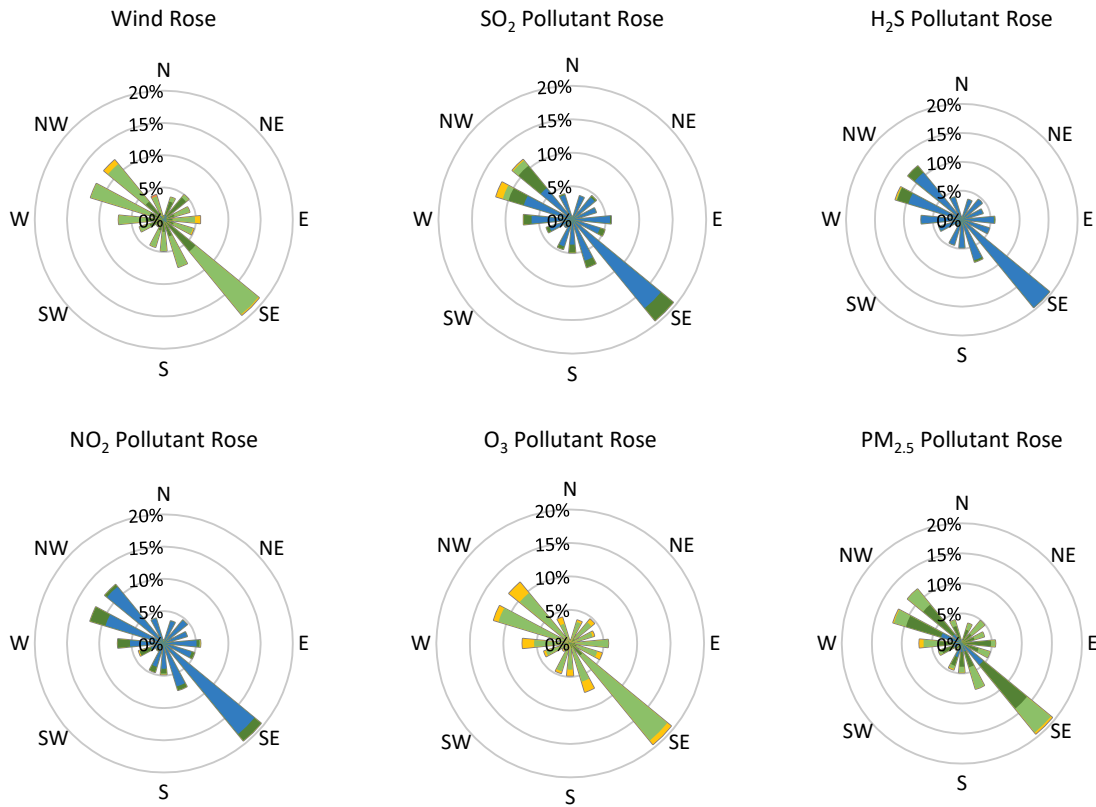
SAAQS: Saskatchewan Ambient Air Quality Standards



* colored lines indicate 1-hr concentration data for all parameters; solid black lines indicate 24-hr concentrations for PM_{2.5}, NO₂, SO₂, and H₂S



GPAZ Regina Station - March 2020 Summary Report



Parameters	Unit	Color Code for Wind Speed and Pollution Concentration Class						
		$0.3 \leq WS < 1.4$	$1.4 \leq WS < 3.1$	$3.1 \leq WS < 7.8$	$7.8 \leq WS < 10.8$	$10.8 \leq WS < 13.6$	$WS \geq 13.6$	
SO ₂	ppb	$0 \leq C < 1$	$1 \leq C < 5$	$5 \leq C < 10$	$10 \leq C < 57$	$57 \leq C < 172$	$C \geq 172$	
NO ₂	ppb	$0 \leq C < 5$	$5 \leq C < 15$	$15 \leq C < 30$	$30 \leq C < 100$	$100 \leq C < 212$	$C \geq 212$	
H ₂ S	ppb	$0 \leq C < 1$	$1 \leq C < 3.6$	$3.6 \leq C < 5$	$5 \leq C < 8$	$8 \leq C < 10.8$	$C \geq 10.8$	
O ₃	ppb	$0 \leq C < 10$	$10 \leq C < 20$	$20 \leq C < 40$	$40 \leq C < 60$	$60 \leq C < 82$	$C \geq 82$	
PM _{2.5}	$\mu\text{g}/\text{m}^3$	$0 \leq C < 2$	$2 \leq C < 4$	$4 \leq C < 10$	$10 \leq C < 20$	$20 \leq C < 30$	$C \geq 30$	

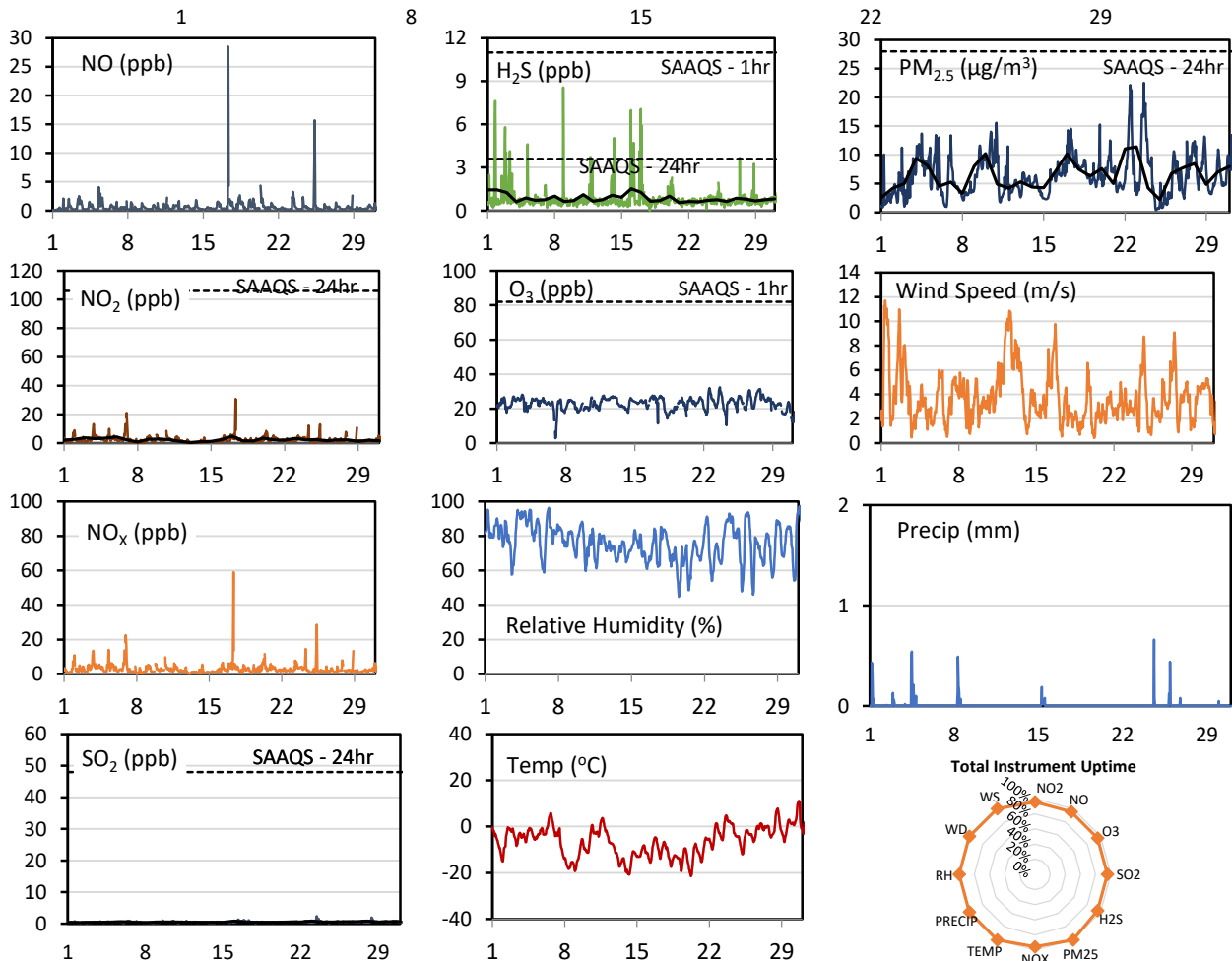
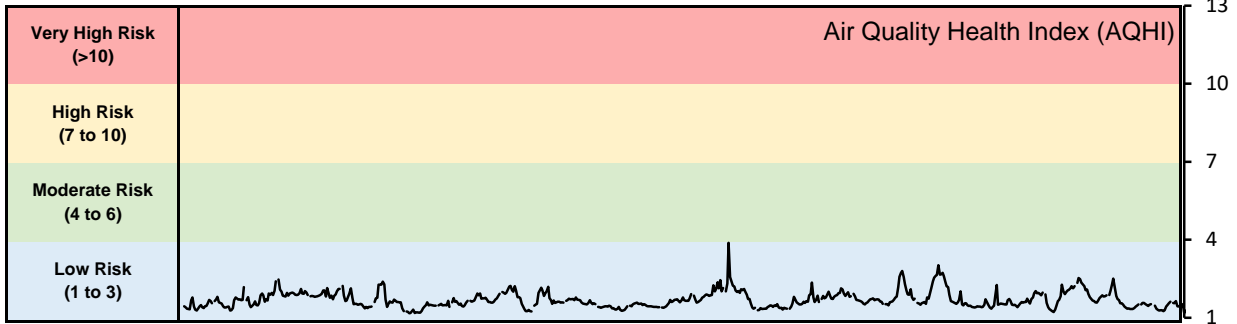
Monthly Update

- Achieved at least 95.4% of scheduled uptime for all parameters
- Downtime of <5% due to routine daily internal zeroes and spans

GPAZ Yorkton Station - March 2020 Summary Report

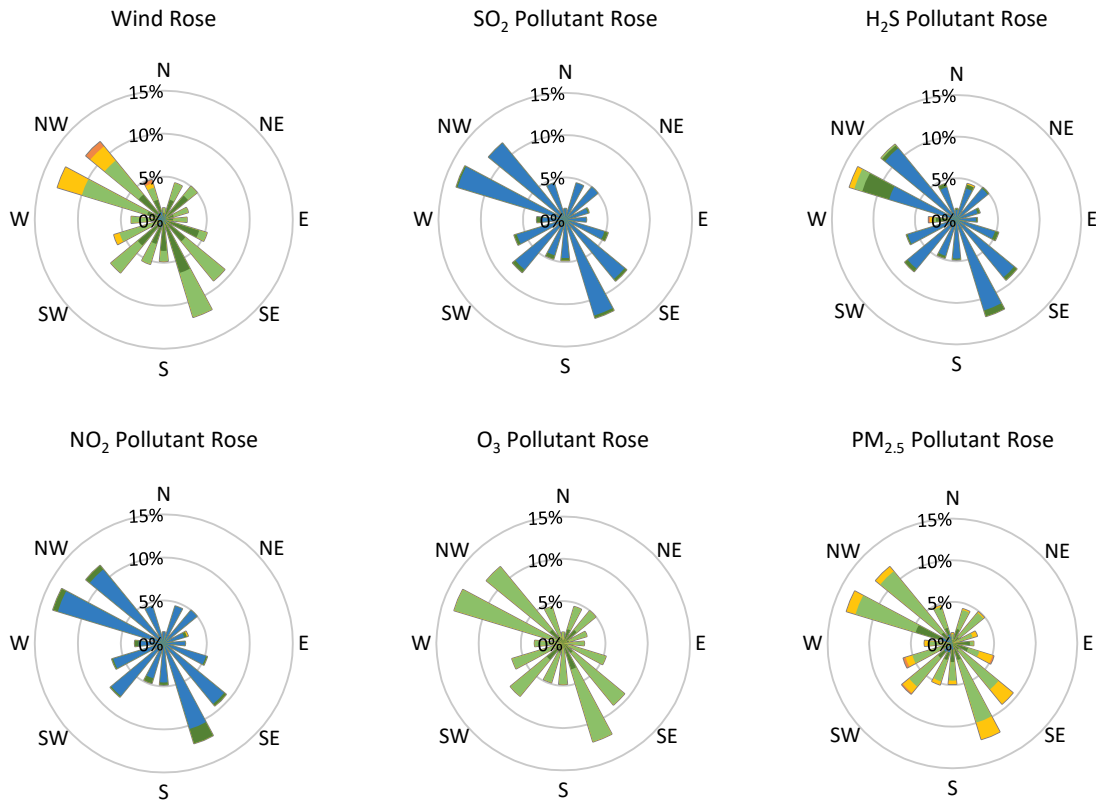
Pollutants		Month Records		24-Hour Records				1-Hour Records			
Name	Conc. Unit	Avg. Conc.	Total Uptime	Maximum		SAAQS Standard	Exceed Days	Maximum		SAAQS Standard	Exceed Hours
				Conc.	Time			Conc.	Time		
NO	ppb	0.6	96%	2.2	Mar-17	-	-	28.5	Mar-17 08:00	-	-
NO ₂	ppb	2.3	96%	4.8	Mar-17	106	0	30.7	Mar-17 08:00	159	0
NO _x	ppb	2.8	96%	6.9	Mar-17	-	-	59.0	Mar-17 08:00	-	-
SO ₂	ppb	0.5	96%	0.8	Mar-23	48	0	2.4	Mar-23 11:00	172	0
H ₂ S	ppb	0.9	96%	1.5	Mar-16	3.6	0	8.6	Mar-08 22:00	11	0
O ₃	ppb	22.8	96%	27.2	Mar-27	-	-	32.4	Mar-23 15:00	82	0
PM _{2.5}	µg/m ³	6.4	100%	11.4	Mar-23	28	0	22.5	Mar-23 15:00	-	-

SAAQS: Saskatchewan Ambient Air Quality Standards



* colored lines indicate 1-hr concentration data for all parameters; solid black lines indicate 24-hr concentrations for PM_{2.5}, NO₂, SO₂, and H₂S

GPAZ Yorkton Station - March 2020 Summary Report



Parameters	Unit	Color Code for Wind Speed and Pollution Concentration Class						
Wind Speed	m/s	$0.3 \leq WS < 1.4$	$1.4 \leq WS < 3.1$	$3.1 \leq WS < 7.8$	$7.8 \leq WS < 10.8$	$10.8 \leq WS < 13.6$	$WS \geq 13.6$	
SO ₂	ppb	$0 \leq C < 1$	$1 \leq C < 5$	$5 \leq C < 10$	$10 \leq C < 57$	$57 \leq C < 172$	$C \geq 172$	
NO ₂	ppb	$0 \leq C < 5$	$5 \leq C < 15$	$15 \leq C < 30$	$30 \leq C < 100$	$100 \leq C < 212$	$C \geq 212$	
H ₂ S	ppb	$0 \leq C < 1$	$1 \leq C < 3.6$	$3.6 \leq C < 5$	$5 \leq C < 8$	$8 \leq C < 10.8$	$C \geq 10.8$	
O ₃	ppb	$0 \leq C < 10$	$10 \leq C < 20$	$20 \leq C < 40$	$40 \leq C < 60$	$60 \leq C < 82$	$C \geq 82$	
PM _{2.5}	µg/m ³	$0 \leq C < 2$	$2 \leq C < 4$	$4 \leq C < 10$	$10 \leq C < 20$	$20 \leq C < 30$	$C \geq 30$	

Monthly Update

- Achieved at least 95.6% of scheduled uptime for all parameters
- Downtime of <5% due to routine daily internal zeroes and spans