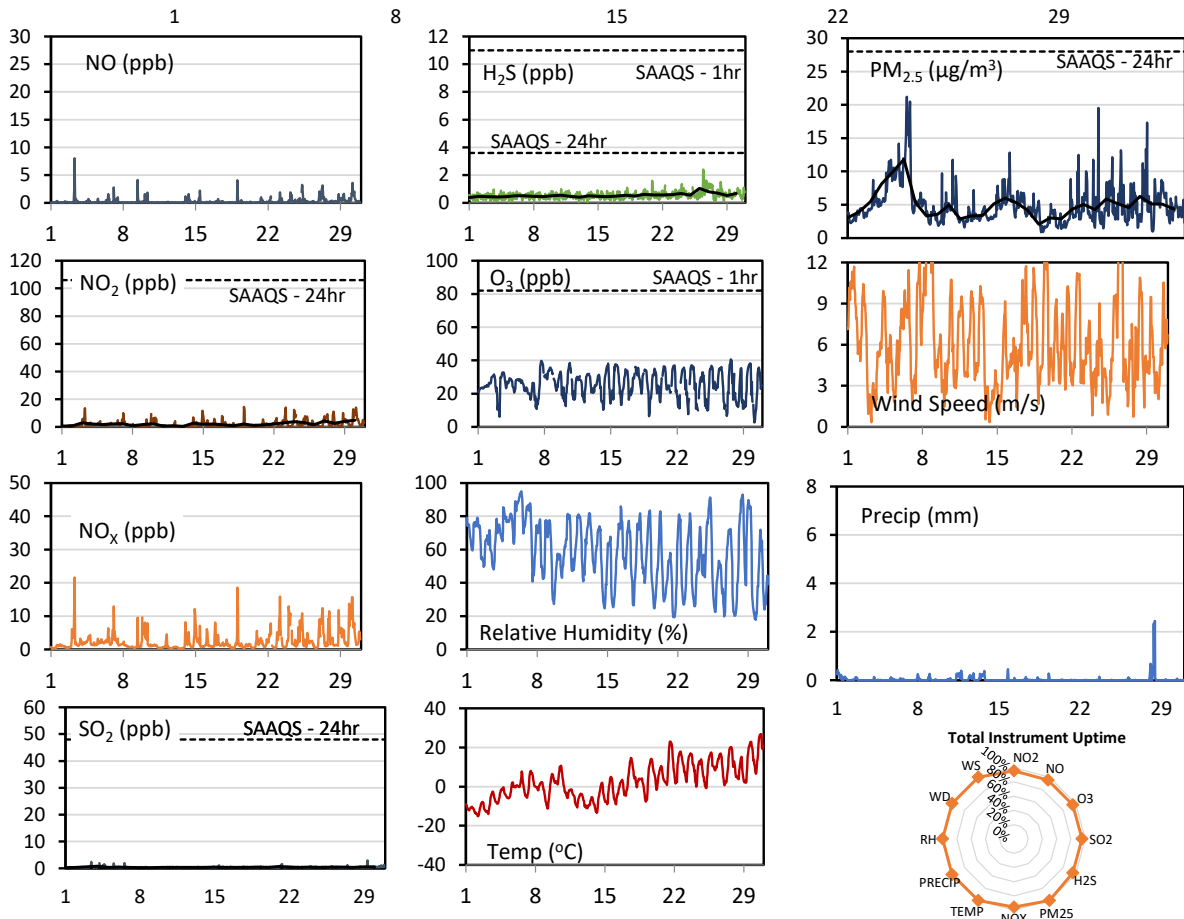
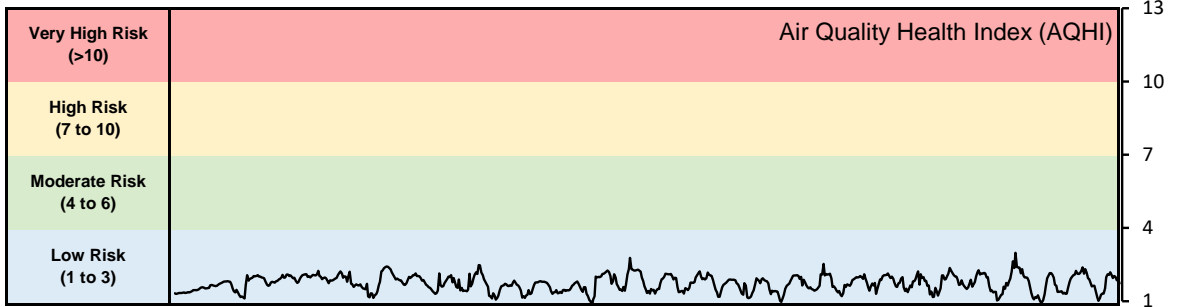


GPAZ Pense Station - April 2020 Summary Report

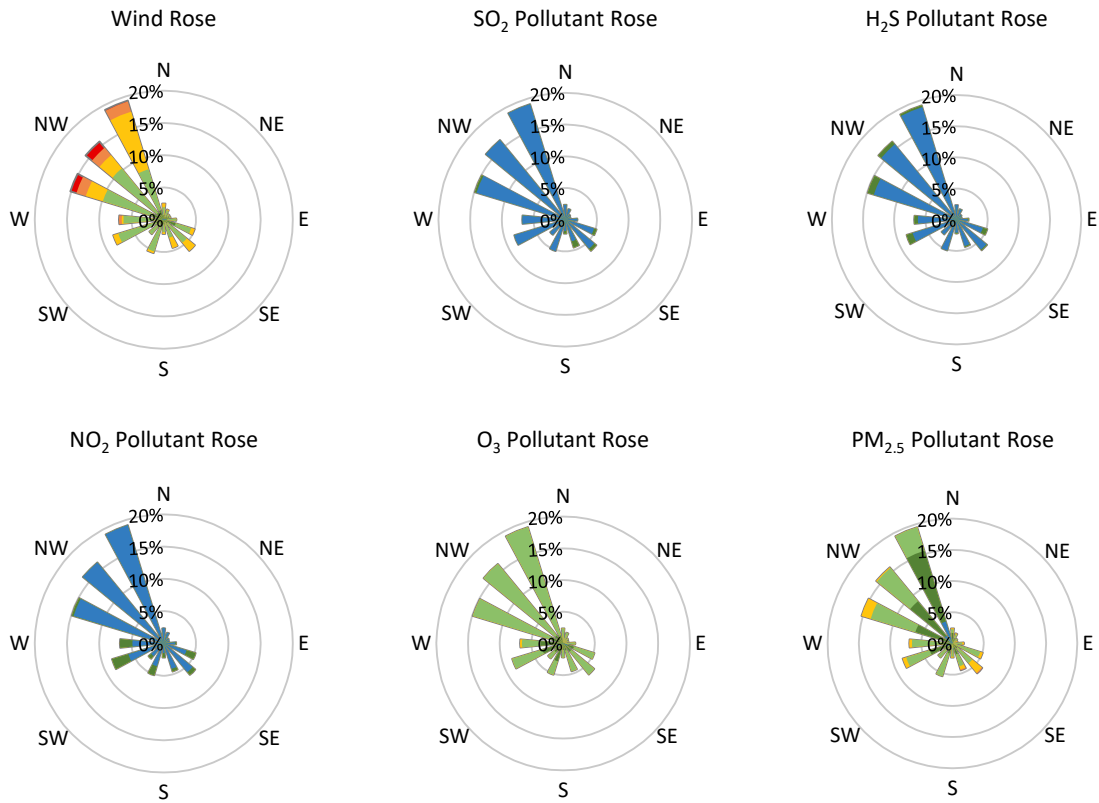
Pollutants		Month Records		24-Hour Records				1-Hour Records			
Name	Conc. Unit	Avg. Conc.	Total Uptime	Maximum		SAAQS Standard	Exceed Days	Maximum		SAAQS Standard	Exceed Hours
				Conc.	Time			Conc.	Time		
NO	ppb	0.3	96%	0.9	Apr-30	-	-	8.0	Apr-03 07:00	-	-
NO ₂	ppb	2.1	96%	4.8	Apr-30	106	0	14.4	Apr-19 01:00	159	0
NO _x	ppb	2.4	96%	5.8	Apr-30	-	-	21.6	Apr-03 07:00	-	-
SO ₂	ppb	0.4	96%	0.8	Apr-04	48	0	2.9	Apr-29 08:00	172	0
H ₂ S	ppb	0.5	96%	1.0	Apr-26	3.6	0	2.4	Apr-26 10:00	11	0
O ₃	ppb	25.5	96%	32.3	Apr-08	-	-	40.6	Apr-27 16:00	82	0
PM _{2.5}	µg/m ³	4.9	100%	11.8	Apr-06	28	0	21.2	Apr-06 06:00	-	-

SAAQS: Saskatchewan Ambient Air Quality Standards



* colored lines indicate 1-hr concentration data for all parameters; solid black lines indicate 24-hr concentrations for PM_{2.5}, NO₂, SO₂, and H₂S

GPAZ Pense Station - April 2020 Summary Report



Parameters	Unit	Color Code for Wind Speed and Pollution Concentration Class						
Wind Speed	m/s	$0.3 \leq WS < 1.4$	$1.4 \leq WS < 3.1$	$3.1 \leq WS < 7.8$	$7.8 \leq WS < 10.8$	$10.8 \leq WS < 13.6$	$WS \geq 13.6$	
SO ₂	ppb	$0 \leq C < 1$	$1 \leq C < 5$	$5 \leq C < 10$	$10 \leq C < 57$	$57 \leq C < 172$	$C \geq 172$	
NO ₂	ppb	$0 \leq C < 5$	$5 \leq C < 15$	$15 \leq C < 30$	$30 \leq C < 100$	$100 \leq C < 212$	$C \geq 212$	
H ₂ S	ppb	$0 \leq C < 1$	$1 \leq C < 3.6$	$3.6 \leq C < 5$	$5 \leq C < 8$	$8 \leq C < 10.8$	$C \geq 10.8$	
O ₃	ppb	$0 \leq C < 10$	$10 \leq C < 20$	$20 \leq C < 40$	$40 \leq C < 60$	$60 \leq C < 82$	$C \geq 82$	
PM _{2.5}	µg/m ³	$0 \leq C < 2$	$2 \leq C < 4$	$4 \leq C < 10$	$10 \leq C < 20$	$20 \leq C < 30$	$C \geq 30$	

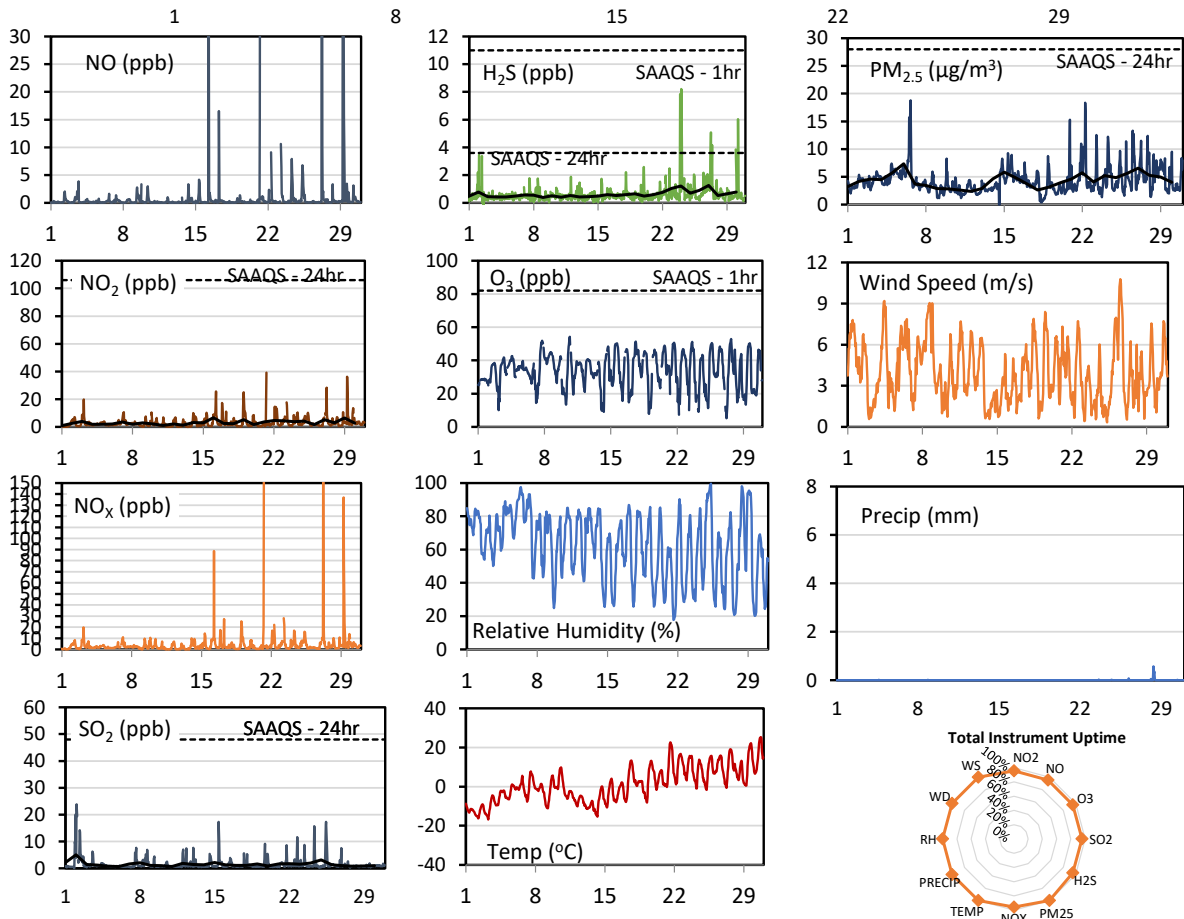
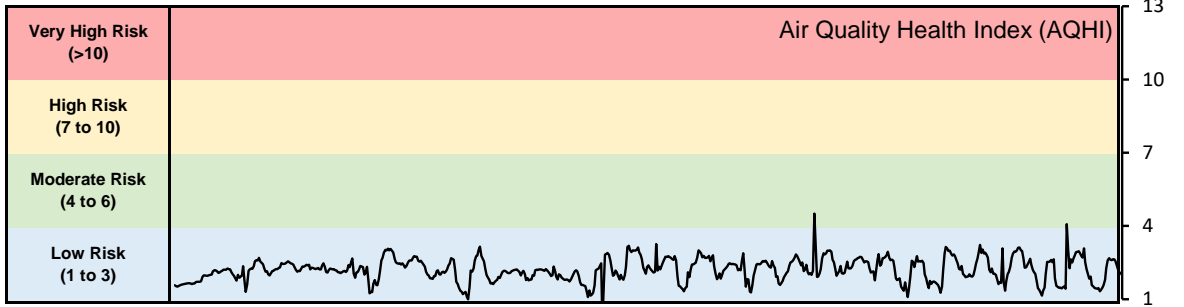
Monthly Update

- Achieved > 95.6% of scheduled uptime for all parameters
- Downtime of 5% due to routine daily internal zeroes and spans

GPAZ Regina Station - April 2020 Summary Report

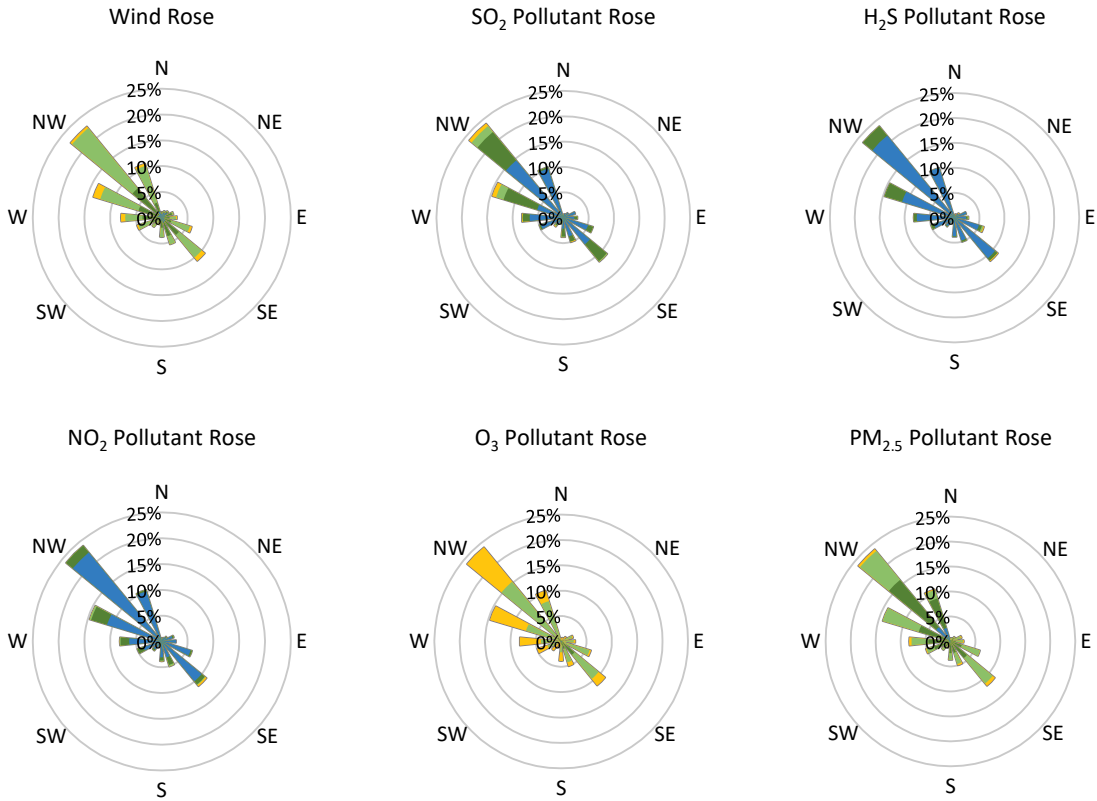
Pollutants		Month Records		24-Hour Records				1-Hour Records			
Name	Conc. Unit	Avg. Conc.	Total Uptime	Maximum		SAAQS Standard	Exceed Days	Maximum		SAAQS Standard	Exceed Hours
				Conc.	Time			Conc.	Time		
NO	ppb	1.2	96%	8.5	Apr-29	-	-	134.8	Apr-27 05:00	-	-
NO ₂	ppb	3.1	96%	6.7	Apr-16	106	0	39.2	Apr-21 06:00	159	0
NO _x	ppb	4.2	96%	14.9	Apr-29	-	-	163.1	Apr-27 05:00	-	-
SO ₂	ppb	1.5	96%	5.0	Apr-02	48	0	23.9	Apr-02 01:00	172	0
H ₂ S	ppb	0.6	96%	1.3	Apr-27	3.6	0	8.2	Apr-24 01:00	11	0
O ₃	ppb	33.6	96%	41.9	Apr-08	-	-	54.2	Apr-10 16:00	82	0
PM _{2.5}	µg/m ³	4.3	100%	7.4	Apr-06	28	0	18.8	Apr-06 15:00	-	-

SAAQS: Saskatchewan Ambient Air Quality Standards



* colored lines indicate 1-hr concentration data for all parameters; solid black lines indicate 24-hr concentrations for PM_{2.5}, NO₂, SO₂, and H₂S

GPAZ Regina Station - April 2020 Summary Report



Parameters	Unit	Color Code for Wind Speed and Pollution Concentration Class							
Wind Speed	m/s	$0.3 \leq WS < 1.4$	$1.4 \leq WS < 3.1$	$3.1 \leq WS < 7.8$	$7.8 \leq WS < 10.8$	$10.8 \leq WS < 13.6$	$13.6 \leq WS < 17.2$	$17.2 \leq WS < 21.2$	$WS \geq 21.2$
SO ₂	ppb	$0 \leq C < 1$	$1 \leq C < 5$	$5 \leq C < 10$	$10 \leq C < 57$	$57 \leq C < 172$	$172 \leq C < 212$	$212 \leq C < 252$	$C \geq 252$
NO ₂	ppb	$0 \leq C < 5$	$5 \leq C < 15$	$15 \leq C < 30$	$30 \leq C < 100$	$100 \leq C < 212$	$212 \leq C < 252$	$252 \leq C < 300$	$C \geq 300$
H ₂ S	ppb	$0 \leq C < 1$	$1 \leq C < 3.6$	$3.6 \leq C < 5$	$5 \leq C < 8$	$8 \leq C < 10.8$	$10.8 \leq C < 13.6$	$13.6 \leq C < 17.2$	$C \geq 17.2$
O ₃	ppb	$0 \leq C < 10$	$10 \leq C < 20$	$20 \leq C < 40$	$40 \leq C < 60$	$60 \leq C < 82$	$82 \leq C < 100$	$100 \leq C < 120$	$C \geq 120$
PM _{2.5}	µg/m ³	$0 \leq C < 2$	$2 \leq C < 4$	$4 \leq C < 10$	$10 \leq C < 20$	$20 \leq C < 30$	$30 \leq C < 40$	$40 \leq C < 50$	$C \geq 50$

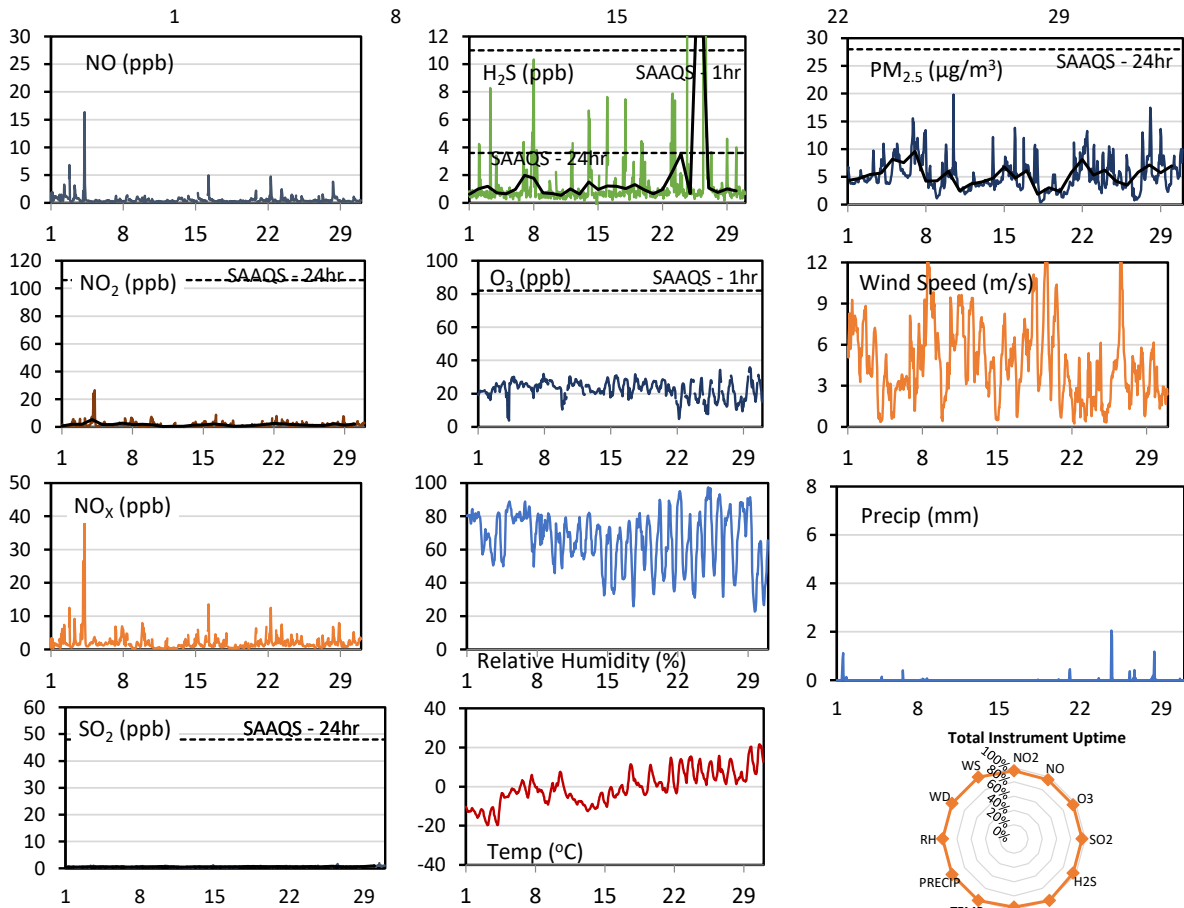
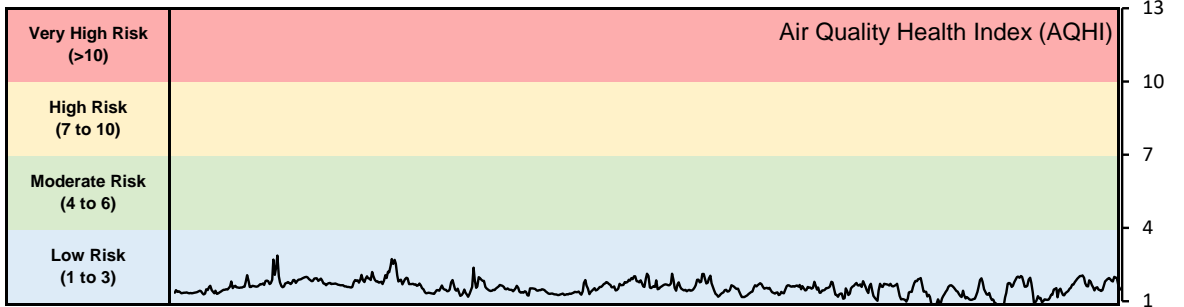
Monthly Update

- Achieved > 95.6% of scheduled uptime for all parameters
- Downtime of 5% due to routine daily internal zeroes and spans

GPAZ Yorkton Station - April 2020 Summary Report

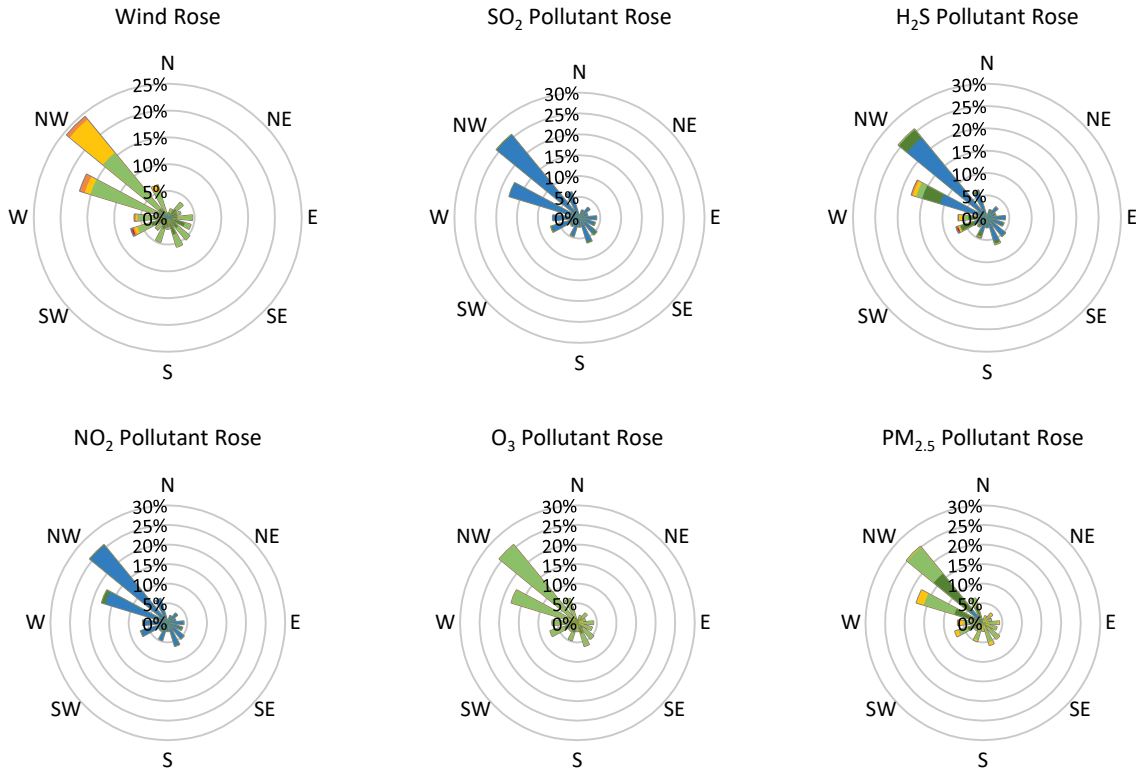
Pollutants		Month Records		24-Hour Records				1-Hour Records			
Name	Conc. Unit	Avg. Conc.	Total Uptime	Maximum		SAAQS Standard	Exceed Days	Maximum		SAAQS Standard	Exceed Hours
				Conc.	Time			Conc.	Time		
NO	ppb	0.6	96%	1.4	Apr-04	-	-	16.4	Apr-04 06:00	-	-
NO ₂	ppb	1.6	96%	5.3	Apr-04	106	0	26.5	Apr-04 06:00	159	0
NO _x	ppb	2.1	96%	6.6	Apr-04	-	-	42.7	Apr-04 06:00	-	-
SO ₂	ppb	0.6	96%	0.9	Apr-30	48	0	1.9	Apr-30 11:00	172	0
H ₂ S	ppb	1.8	96%	20.1	Apr-26	3.6	1	170.8	Apr-26 13:00	11	7
O ₃	ppb	22.6	96%	27.1	Apr-08	-	-	35.9	Apr-29 16:00	82	0
PM _{2.5}	µg/m ³	5.3	100%	9.6	Apr-07	28	0	19.8	Apr-10 11:00	-	-

SAAQS: Saskatchewan Ambient Air Quality Standards



* colored lines indicate 1-hr concentration data for all parameters; solid black lines indicate 24-hr concentrations for PM_{2.5}, NO₂, SO₂, and H₂S

GPAZ Yorkton Station - April 2020 Summary Report



Parameters	Unit	Color Code for Wind Speed and Pollution Concentration Class					
Wind Speed	m/s	$0.3 \leq WS < 1.4$	$1.4 \leq WS < 3.1$	$3.1 \leq WS < 7.8$	$7.8 \leq WS < 10.8$	$10.8 \leq WS < 13.6$	$WS \geq 13.6$
SO ₂	ppb	$0 \leq C < 1$	$1 \leq C < 5$	$5 \leq C < 10$	$10 \leq C < 57$	$57 \leq C < 172$	$C \geq 172$
NO ₂	ppb	$0 \leq C < 5$	$5 \leq C < 15$	$15 \leq C < 30$	$30 \leq C < 100$	$100 \leq C < 212$	$C \geq 212$
H ₂ S	ppb	$0 \leq C < 1$	$1 \leq C < 3.6$	$3.6 \leq C < 5$	$5 \leq C < 8$	$8 \leq C < 10.8$	$C \geq 10.8$
O ₃	ppb	$0 \leq C < 10$	$10 \leq C < 20$	$20 \leq C < 40$	$40 \leq C < 60$	$60 \leq C < 82$	$C \geq 82$
PM _{2.5}	µg/m ³	$0 \leq C < 2$	$2 \leq C < 4$	$4 \leq C < 10$	$10 \leq C < 20$	$20 \leq C < 30$	$C \geq 30$

Monthly Update

- Achieved > 95.7% of scheduled uptime for all parameters
- Downtime of 5% due to routine daily internal zeroes and spans

Exceedance Summary (1- Hour Average - Exceedances Highlighted)

Exceedance Time	AQHI	NO ₂	NO	SO ₂	O ₃	NO _x	H ₂ S	PM _{2.5}	Temp	WD	WS
	-	ppb	ppb	ppb	ppb	ppb	ppb	µg/m ³	°C	deg	m/s
Apr-24 17:00	1.4	1.4	1.3	1.0	19.5	2.6	61.4	5.8	9.3	340	6
Apr-26 11:00	1.6	0.8	0.4	1.1	26.8	1.0	18.2	2.7	14.7	209	7
Apr-26 12:00	1.9	0.2	0.5	1.2	34.1	0.6	121.6	1.5	15.8	231	11
Apr-26 13:00	1.9	0.1	0.6	1.7	34.4	0.6	170.8	2.9	15.8	242	14
Apr-26 14:00	1.8	0.3	0.4	1.1	31.2	0.7	58.4	2.9	13.2	257	14
Apr-26 15:00	1.5	0.3	0.4	0.8	27.2	0.6	55.0	1.1	8.6	258	14
Apr-26 17:00	1.3	1.2	0.4	0.3	21.4	1.5	13.0	1.5	8.4	264	10

Exceedance Summary (24- Hour Average - Exceedances Highlighted)

Exceedance Time	AQHI	NO ₂	NO	SO ₂	O ₃	NO _x	H ₂ S	PM _{2.5}	Temp	WD	WS
	-	ppb	ppb	ppb	ppb	ppb	ppb	µg/m ³	°C	deg	m/s
April 26, 2020	1.3	1.0	0.4	0.7	19.7	1.3	20.1	3.5	1.3	207	7.3