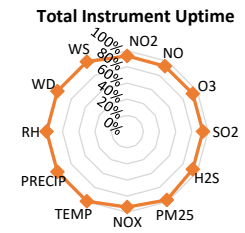
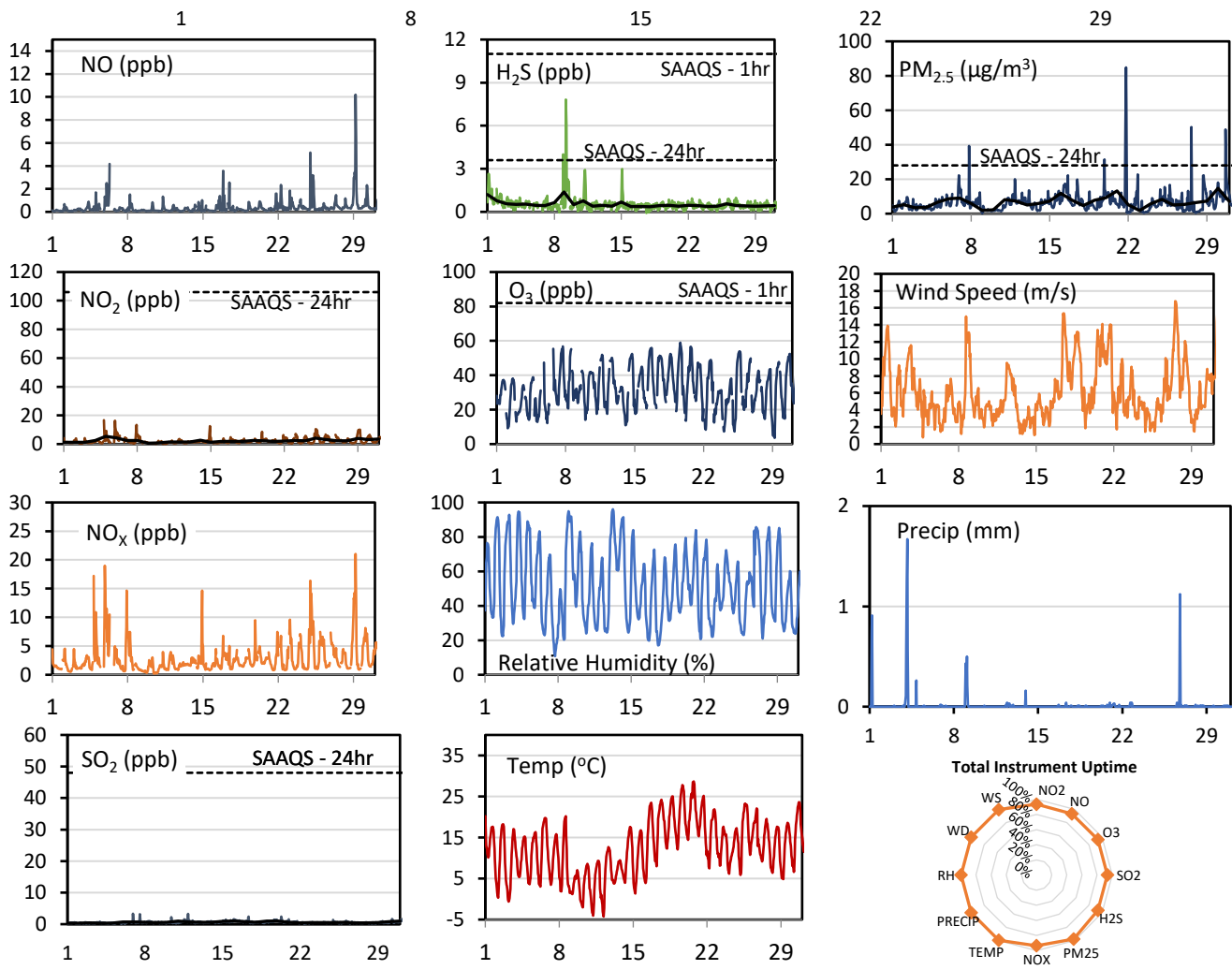
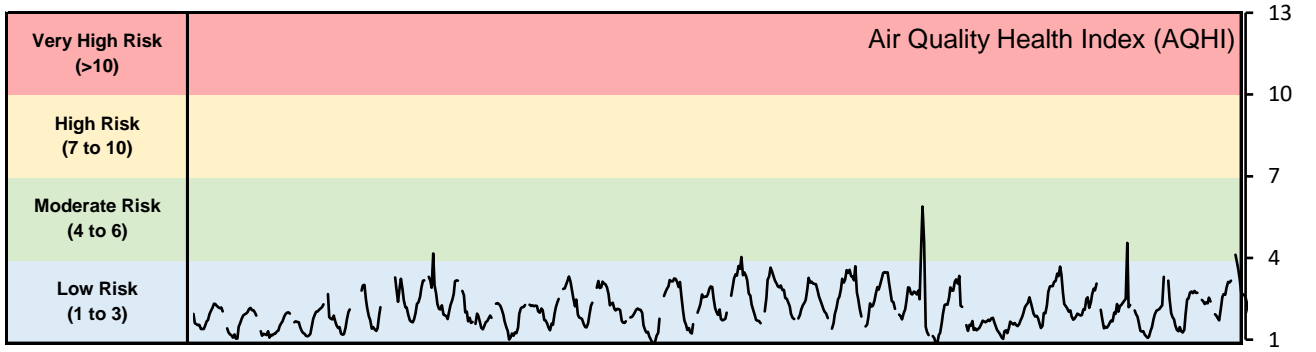


GPAZ Pense Station - May 2020 Summary Report

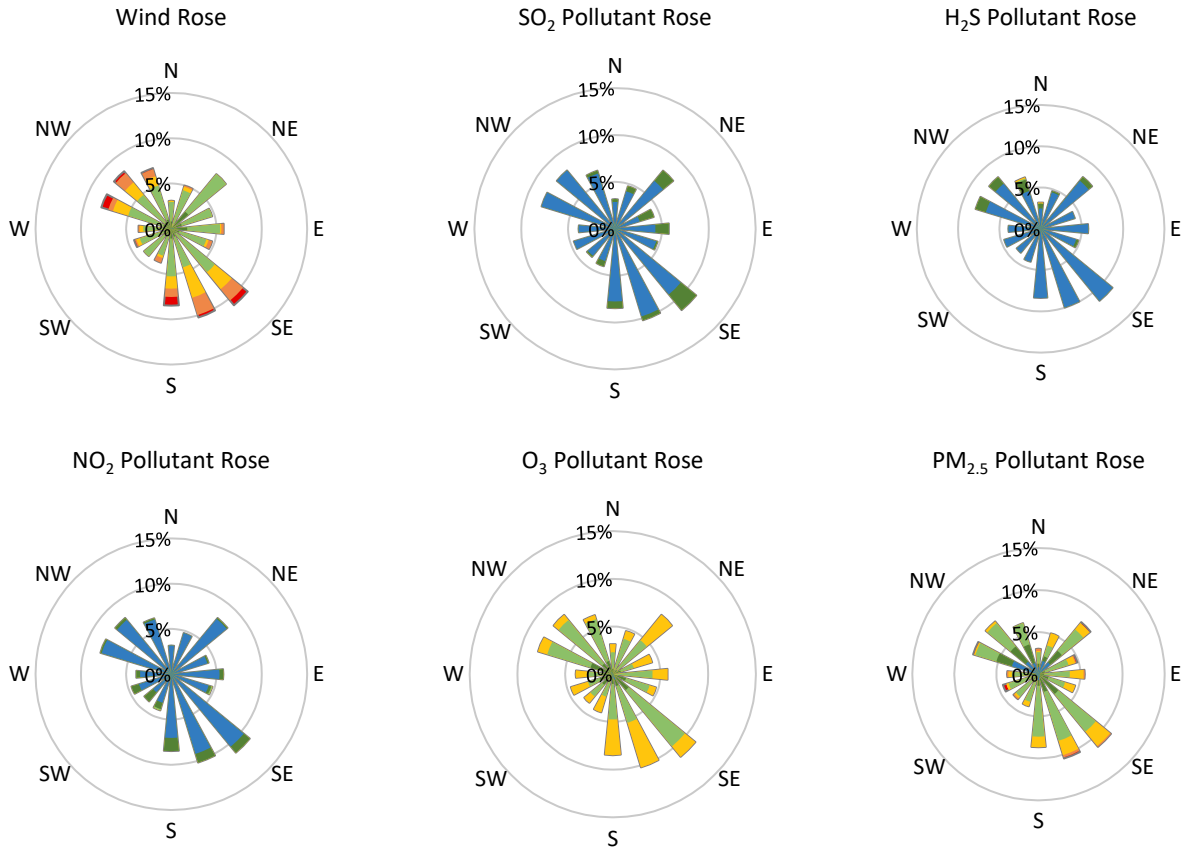
Pollutants		Month Records		24-Hour Records				1-Hour Records			
Name	Conc. Unit	Avg. Conc.	Total Uptime	Maximum		SAAQS Standard	Exceed Days	Maximum		SAAQS Standard	Exceed Hours
				Conc.	Time			Conc.	Time		
NO	ppb	0.4	94%	1.7	May-29	-	-	10.2	May-29 05:00	-	-
NO ₂	ppb	2.3	94%	5.4	May-05	106	0	16.6	May-04 20:00	159	0
NO _x	ppb	2.8	94%	6.2	May-05	-	-	21.0	May-29 05:00	-	-
SO ₂	ppb	0.6	94%	1.0	May-16	48	0	3.3	May-06 22:00	172	0
H ₂ S	ppb	0.5	94%	1.4	May-09	3.6	0	7.8	May-09 05:00	11	0
O ₃	ppb	31.9	94%	39.7	May-19	-	-	59.0	May-19 15:00	82	0
PM _{2.5}	µg/m ³	6.6	98%	14.7	May-30	28	0	84.9	May-21 19:00	-	-

SAAQS: Saskatchewan Ambient Air Quality Standards



* colored lines indicate 1-hr concentration data for all parameters; solid black lines indicate 24-hr concentrations for PM_{2.5}, NO₂, SO₂, and H₂S

GPAZ Pense Station - May 2020 Summary Report



Parameters	Unit	Color Code for Wind Speed and Pollution Concentration Class					
		0.3 ≤ WS < 1.4	1.4 ≤ WS < 3.1	3.1 ≤ WS < 7.8	7.8 ≤ WS < 10.8	10.8 ≤ WS < 13.6	WS ≥ 13.6
SO ₂	ppb	0 ≤ C < 1	1 ≤ C < 5	5 ≤ C < 10	10 ≤ C < 57	57 ≤ C < 172	C ≥ 172
NO ₂	ppb	0 ≤ C < 5	5 ≤ C < 15	15 ≤ C < 30	30 ≤ C < 100	100 ≤ C < 212	C ≥ 212
H ₂ S	ppb	0 ≤ C < 1	1 ≤ C < 3.6	3.6 ≤ C < 5	5 ≤ C < 8	8 ≤ C < 10.8	C ≥ 10.8
O ₃	ppb	0 ≤ C < 10	10 ≤ C < 20	20 ≤ C < 40	40 ≤ C < 60	60 ≤ C < 82	C ≥ 82
PM _{2.5}	µg/m ³	0 ≤ C < 2	2 ≤ C < 4	4 ≤ C < 10	10 ≤ C < 20	20 ≤ C < 30	C ≥ 30

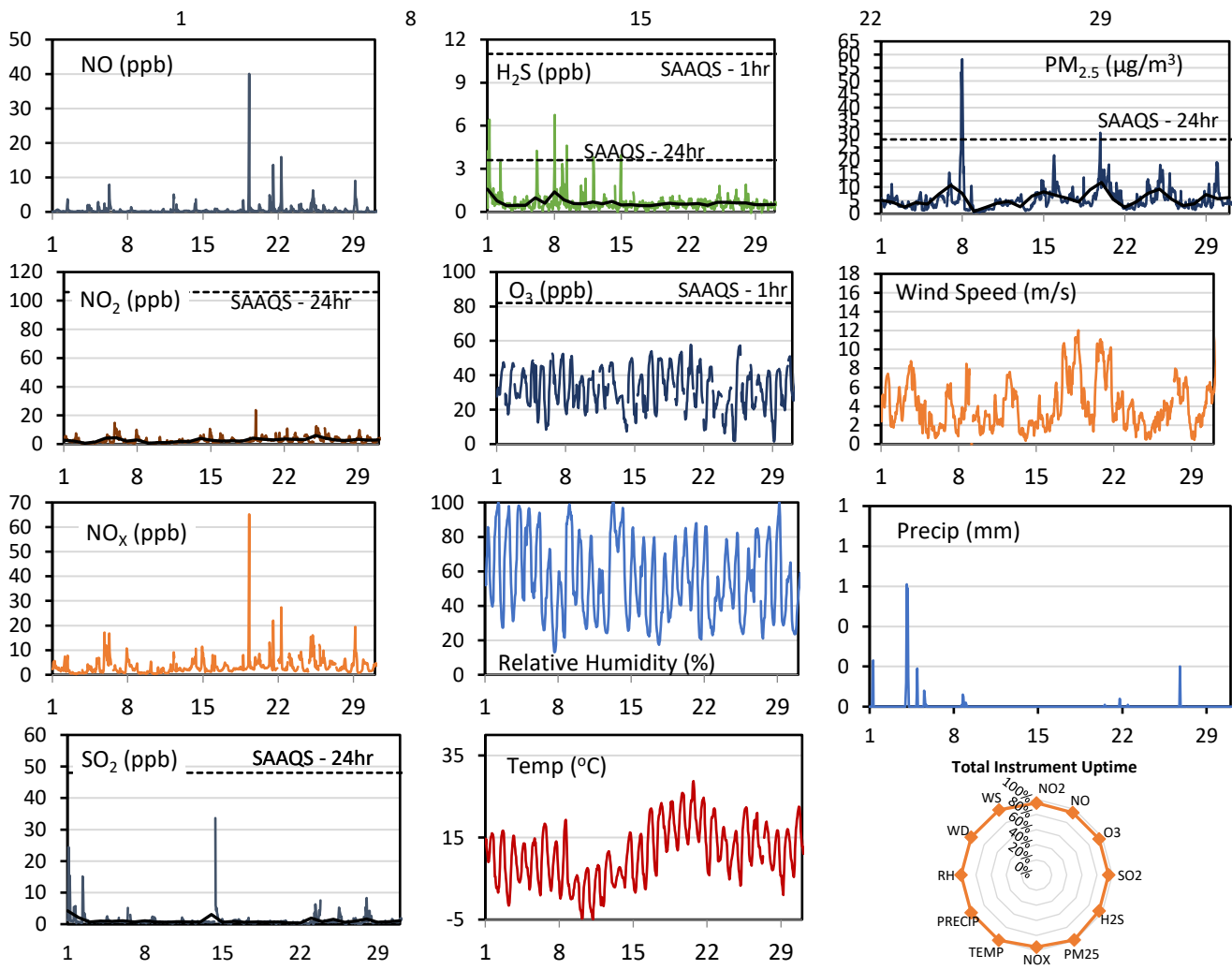
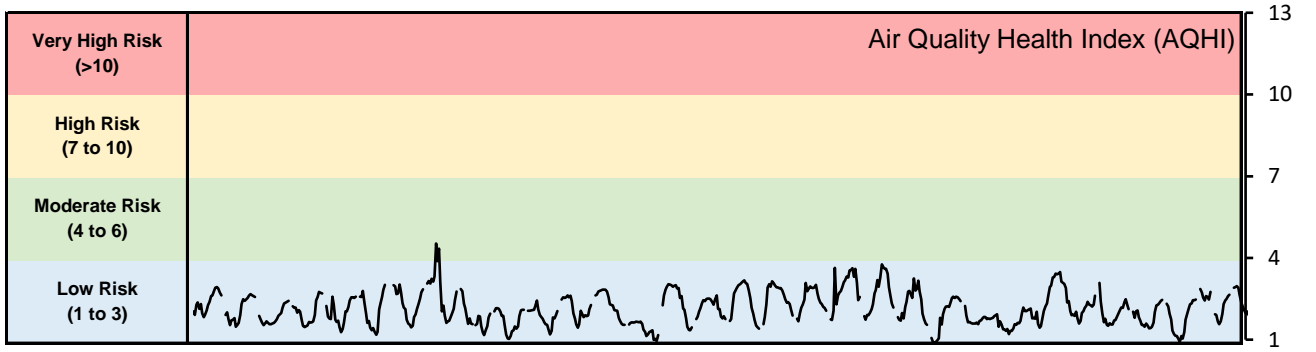
Monthly Update

- Achieved at least 93% of scheduled uptime for all parameters
- Downtime of <7% due to routine daily internal zeroes and spans, and quarterly calibration

GPAZ Regina Station - May 2020 Summary Report

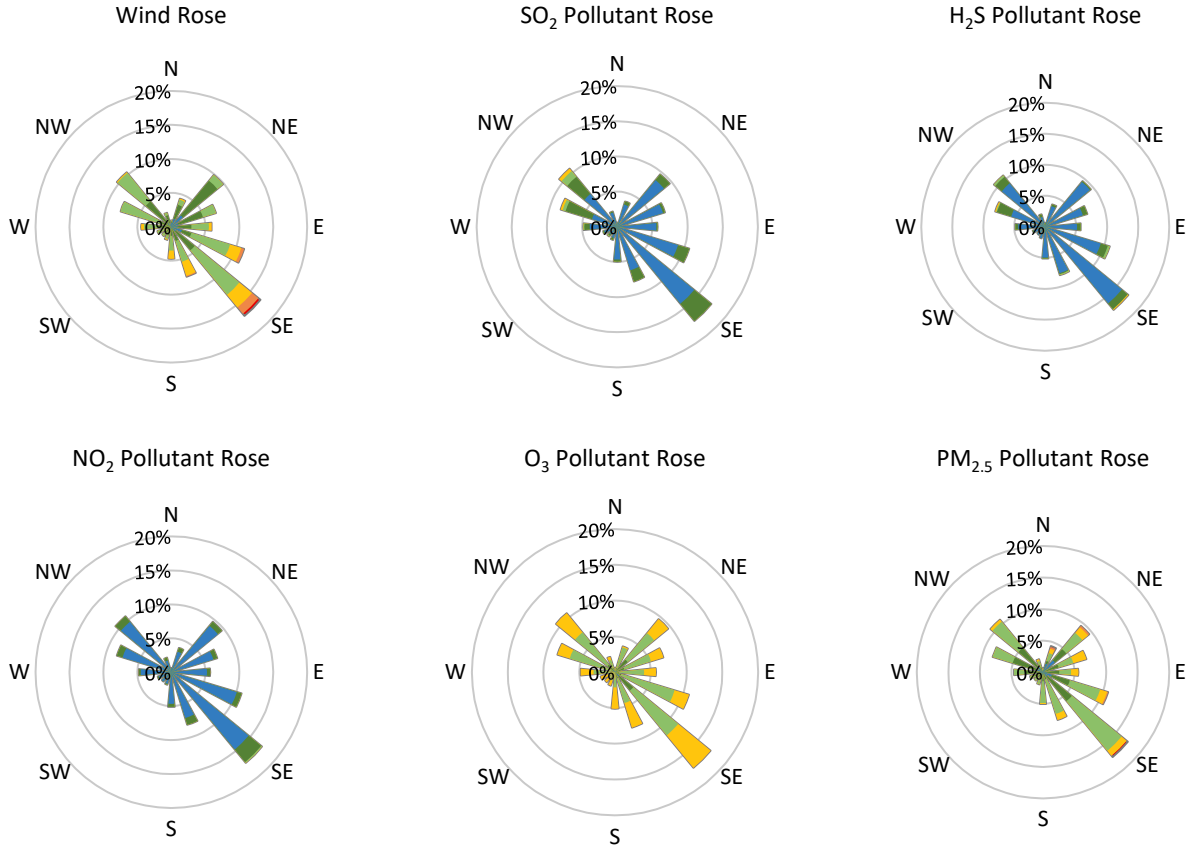
Pollutants		Month Records		24-Hour Records				1-Hour Records			
Name	Conc. Unit	Avg. Conc.	Total Uptime	Maximum		SAAQS Standard	Exceed Days	Maximum		SAAQS Standard	Exceed Hours
				Conc.	Time			Conc.	Time		
NO	ppb	0.5	95%	2.3	May-19	-	-	40.0	May-19 07:00	-	-
NO ₂	ppb	2.7	95%	6.0	May-25	106	0	23.7	May-19 07:00	159	0
NO _x	ppb	3.4	95%	7.9	May-25	-	-	65.2	May-19 07:00	-	-
SO ₂	ppb	1.1	95%	4.3	May-01	48	0	33.6	May-14 08:00	172	0
H ₂ S	ppb	0.6	95%	1.6	May-01	3.6	0	6.8	May-08 01:00	11	0
O ₃	ppb	32.1	95%	40.5	May-31	-	-	57.7	May-20 17:00	82	0
PM _{2.5}	µg/m ³	5.6	99%	11.8	May-20	28	0	58.3	May-08 00:00	-	-

SAAQS: Saskatchewan Ambient Air Quality Standards



* colored lines indicate 1-hr concentration data for all parameters; solid black lines indicate 24-hr concentrations for PM_{2.5}, NO₂, SO₂, and H₂S

GPAZ Regina Station - May 2020 Summary Report



Parameters	Unit	Color Code for Wind Speed and Pollution Concentration Class						
		0.3 ≤ WS < 1.4	1.4 ≤ WS < 3.1	3.1 ≤ WS < 7.8	7.8 ≤ WS < 10.8	10.8 ≤ WS < 13.6	WS ≥ 13.6	
SO ₂	ppb	0 ≤ C < 1	1 ≤ C < 5	5 ≤ C < 10	10 ≤ C < 57	57 ≤ C < 172	C ≥ 172	
NO ₂	ppb	0 ≤ C < 5	5 ≤ C < 15	15 ≤ C < 30	30 ≤ C < 100	100 ≤ C < 212	C ≥ 212	
H ₂ S	ppb	0 ≤ C < 1	1 ≤ C < 3.6	3.6 ≤ C < 5	5 ≤ C < 8	8 ≤ C < 10.8	C ≥ 10.8	
O ₃	ppb	0 ≤ C < 10	10 ≤ C < 20	20 ≤ C < 40	40 ≤ C < 60	60 ≤ C < 82	C ≥ 82	
PM _{2.5}	µg/m ³	0 ≤ C < 2	2 ≤ C < 4	4 ≤ C < 10	10 ≤ C < 20	20 ≤ C < 30	C ≥ 30	

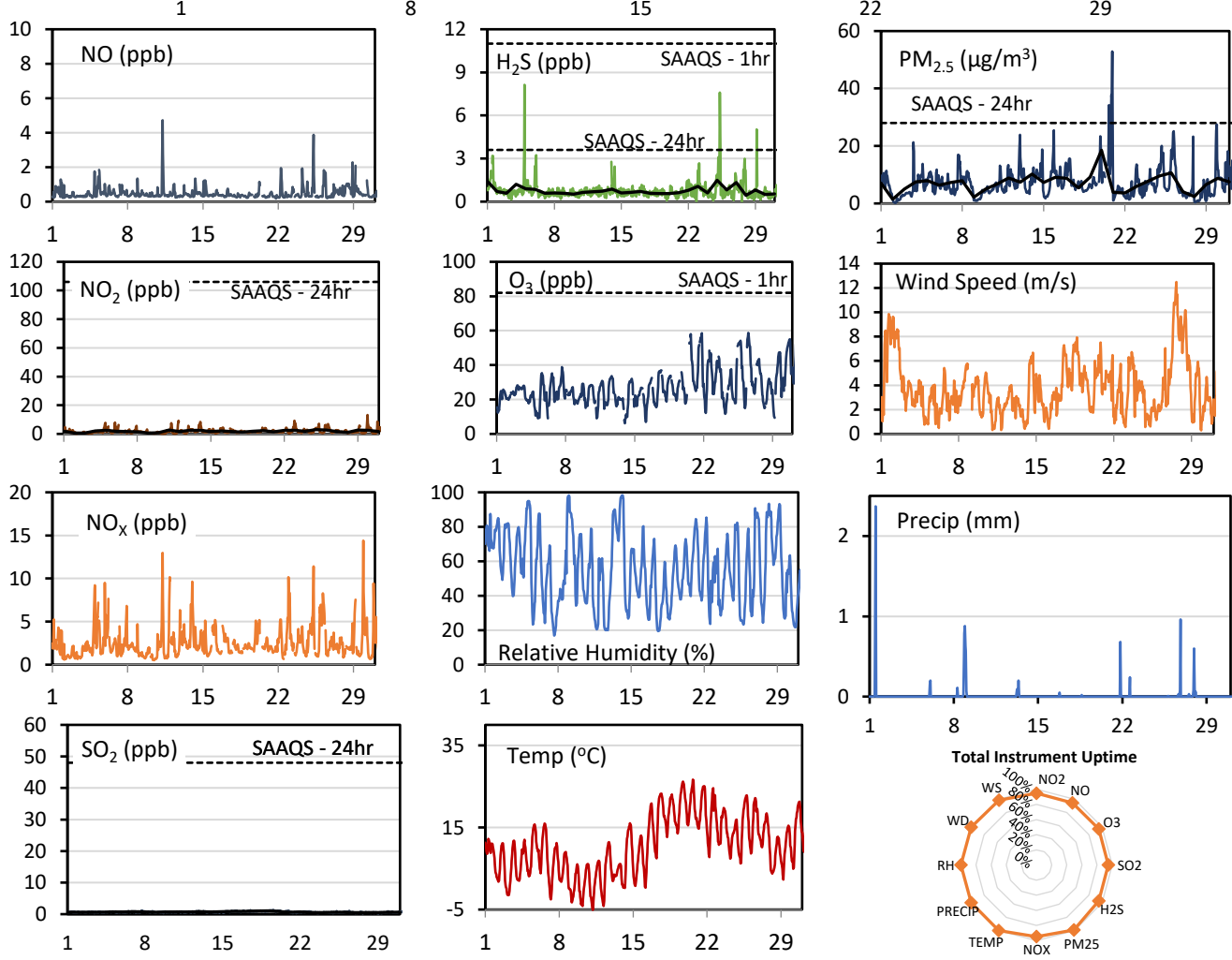
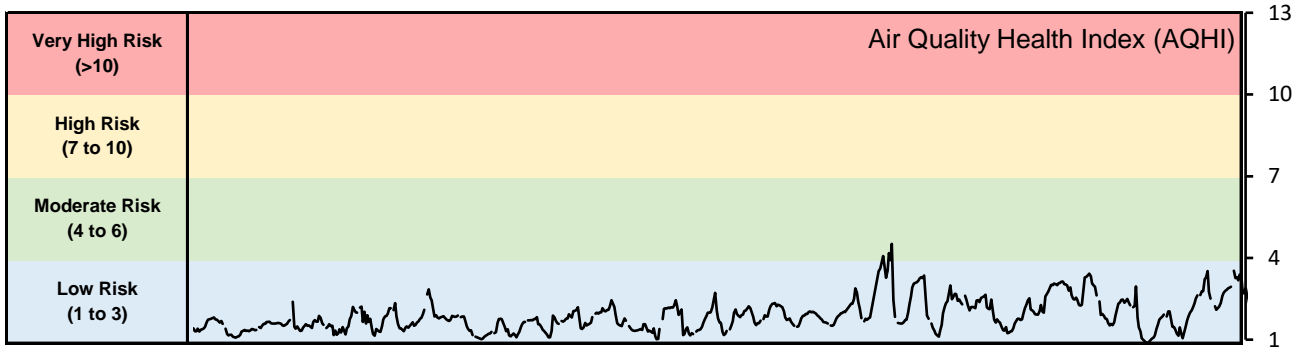
Monthly Update

- Achieved at least 95% of scheduled uptime for all parameters
- Downtime of <5% due to routine daily internal zeroes and spans, and quarterly calibration

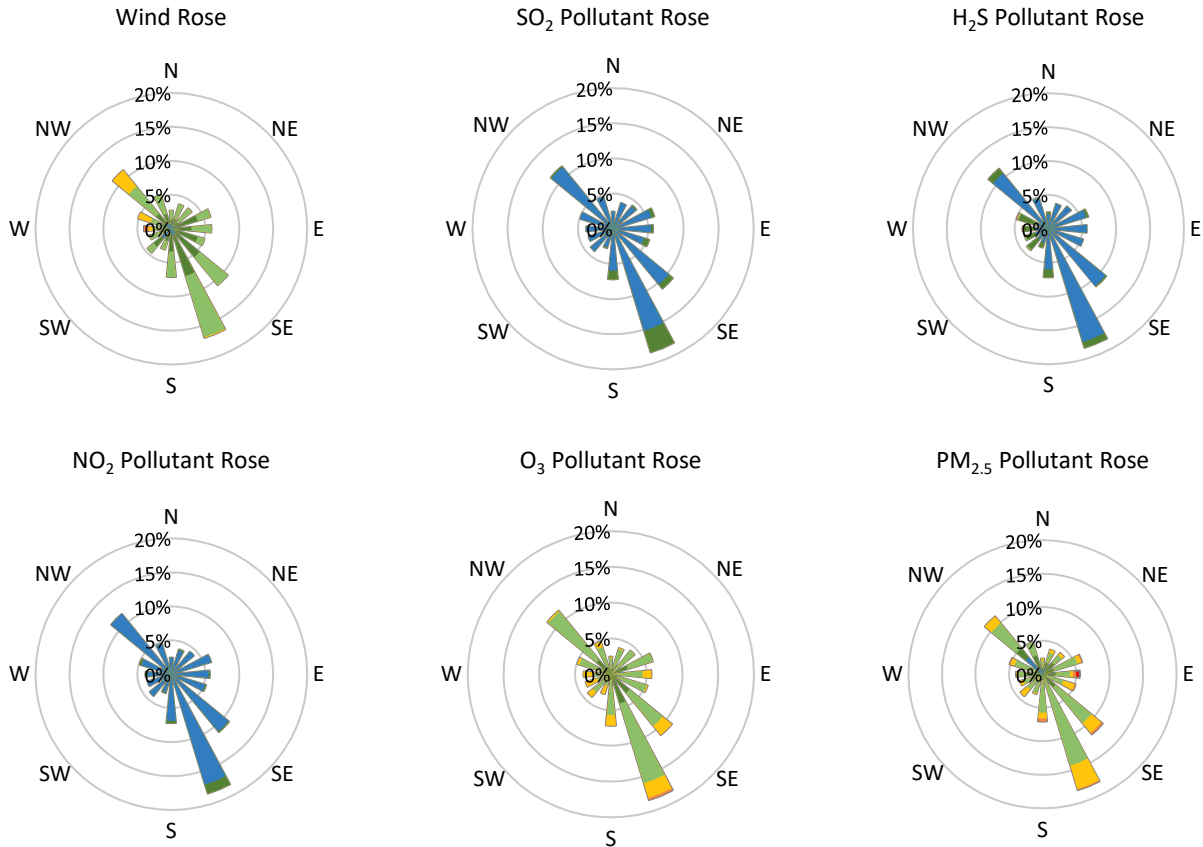
GPAZ Yorkton Station - May 2020 Summary Report

Pollutants		Month Records		24-Hour Records				1-Hour Records			
Name	Conc. Unit	Avg. Conc.	Total Uptime	Maximum		SAAQS Standard	Exceed Days	Maximum		SAAQS Standard	Exceed Hours
				Conc.	Time			Conc.	Time		
NO	ppb	0.5	95%	0.8	May-28	-	-	4.7	May-11 06:00	-	-
NO ₂	ppb	1.9	95%	3.0	May-25	106	0	13.2	May-29 22:00	159	0
NO _x	ppb	2.5	95%	3.8	May-25	-	-	14.4	May-29 22:00	-	-
SO ₂	ppb	0.7	95%	1.1	May-19	48	0	1.4	May-19 14:00	172	0
H ₂ S	ppb	0.8	95%	1.5	May-25	3.6	0	8.1	May-04 21:00	11	0
O ₃	ppb	27.6	95%	47.8	May-31	-	-	61.2	May-31 17:00	82	0
PM _{2.5}	µg/m ³	7.0	99%	18.5	May-20	28	0	52.9	May-20 22:00	-	-

SAAQS: Saskatchewan Ambient Air Quality Standards



* colored lines indicate 1-hr concentration data for all parameters; solid black lines indicate 24-hr concentrations for PM_{2.5}, NO₂, SO₂, and H₂S



Parameters	Unit	Color Code for Wind Speed and Pollution Concentration Class					
		0.3 ≤ WS < 1.4	1.4 ≤ WS < 3.1	3.1 ≤ WS < 7.8	7.8 ≤ WS < 10.8	10.8 ≤ WS < 13.6	WS ≥ 13.6
SO ₂	ppb	0 ≤ C < 1	1 ≤ C < 5	5 ≤ C < 10	10 ≤ C < 57	57 ≤ C < 172	C ≥ 172
NO ₂	ppb	0 ≤ C < 5	5 ≤ C < 15	15 ≤ C < 30	30 ≤ C < 100	100 ≤ C < 212	C ≥ 212
H ₂ S	ppb	0 ≤ C < 1	1 ≤ C < 3.6	3.6 ≤ C < 5	5 ≤ C < 8	8 ≤ C < 10.8	C ≥ 10.8
O ₃	ppb	0 ≤ C < 10	10 ≤ C < 20	20 ≤ C < 40	40 ≤ C < 60	60 ≤ C < 82	C ≥ 82
PM _{2.5}	µg/m ³	0 ≤ C < 2	2 ≤ C < 4	4 ≤ C < 10	10 ≤ C < 20	20 ≤ C < 30	C ≥ 30

Monthly Update

- Achieved at least 94% of scheduled uptime for all parameters
- Downtime of <6% due to routine daily internal zeroes and spans, and quarterly calibration