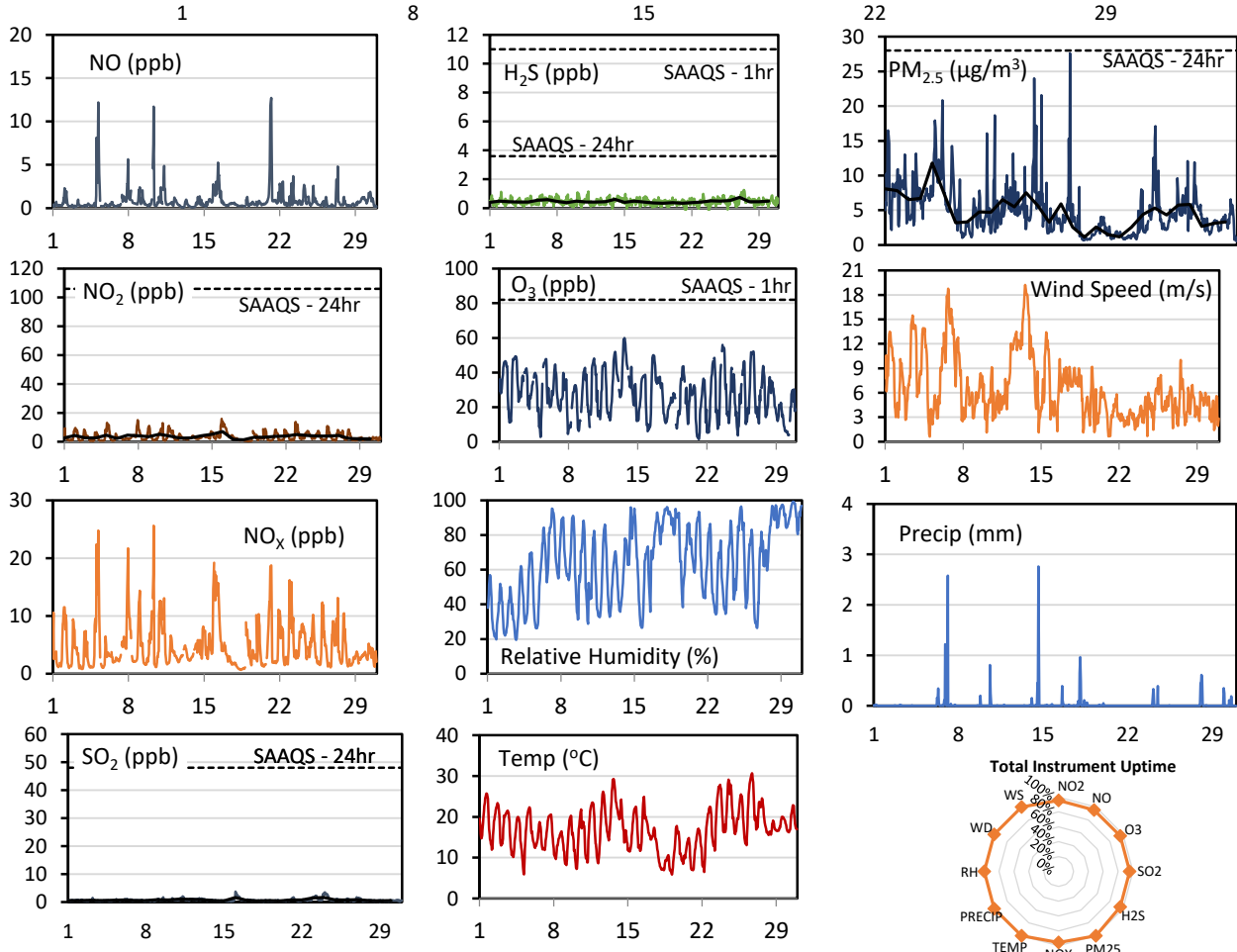
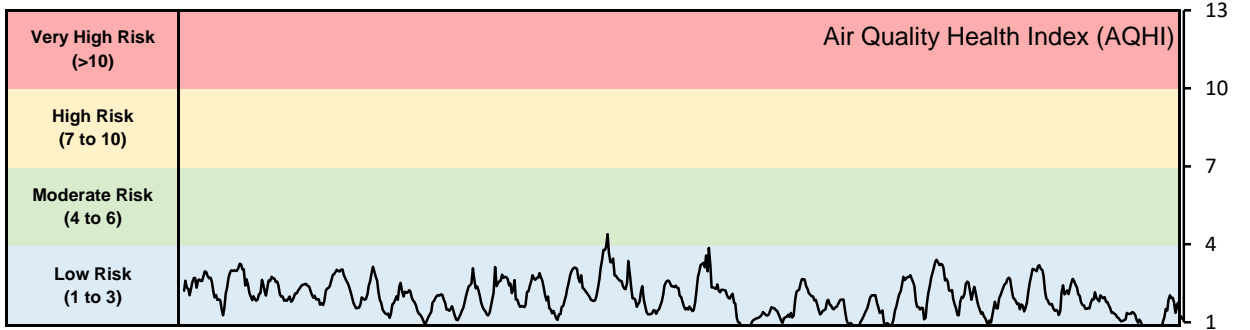


## GPAZ Pense Station - June 2020 Summary Report

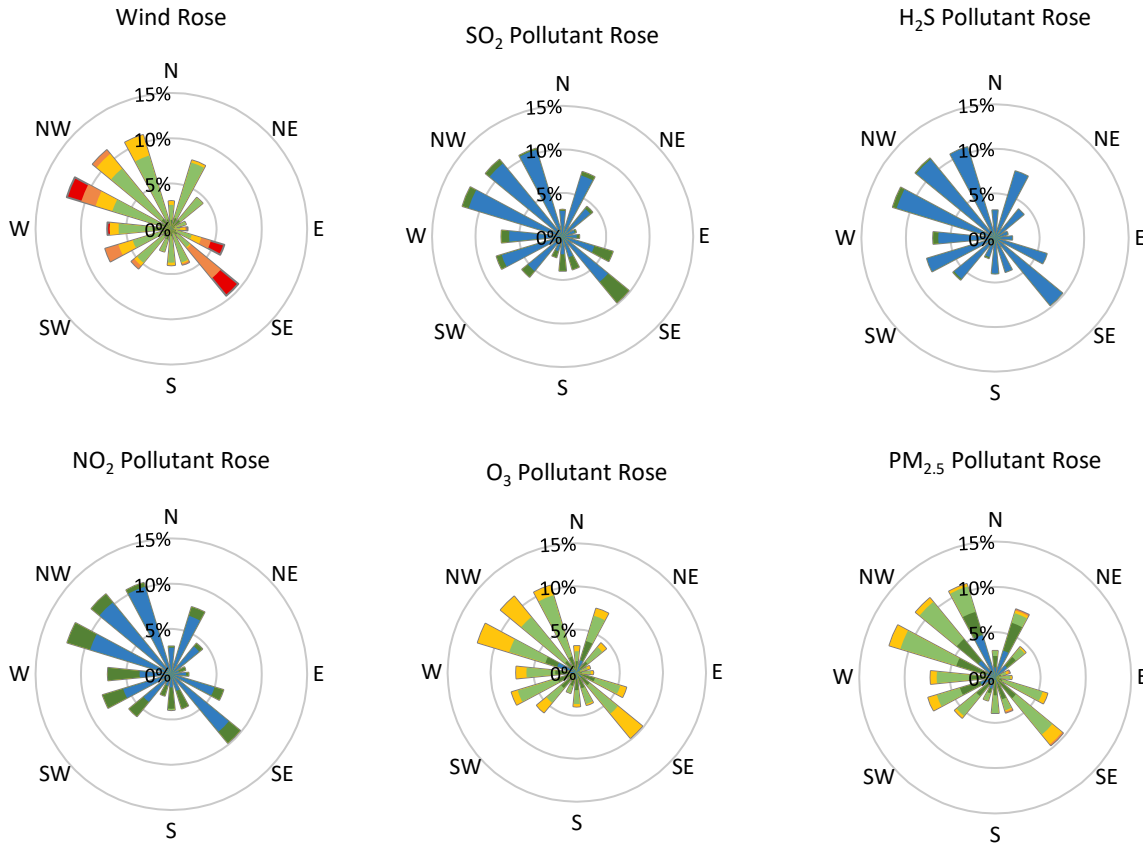
Pollutants		Month Records		24-Hour Records				1-Hour Records			
Name	Conc. Unit	Avg. Conc.	Total Uptime	Maximum		SAAQS Standard	Exceed Days	Maximum		SAAQS Standard	Exceed Hours
				Conc.	Time			Conc.	Time		
NO	ppb	0.9	96%	3.0	Jun-21	-	-	12.7	Jun-21 05:00	-	-
NO <sub>2</sub>	ppb	3.5	96%	7.0	Jun-16	106	0	15.9	Jun-15 22:00	159	0
NO <sub>x</sub>	ppb	4.7	96%	9.4	Jun-16	-	-	25.6	Jun-10 08:00	-	-
SO <sub>2</sub>	ppb	0.7	96%	1.6	Jun-24	48	0	3.7	Jun-16 01:00	172	0
H <sub>2</sub> S	ppb	0.5	96%	0.7	Jun-27	3.6	0	1.3	Jun-27 10:00	11	0
O <sub>3</sub>	ppb	27.6	96%	42.5	Jun-13	-	-	59.9	Jun-13 16:00	82	0
PM <sub>2.5</sub>	µg/m <sup>3</sup>	4.8	100%	11.8	Jun-05	28	0	27.6	Jun-16 18:00	-	-

SAAQS: Saskatchewan Ambient Air Quality Standards



\* colored lines indicate 1-hr concentration data for all parameters; solid black lines indicate 24-hr concentrations for PM<sub>2.5</sub>, NO<sub>2</sub>, SO<sub>2</sub>, and H<sub>2</sub>S

**GPAZ Pense Station - June 2020 Summary Report**



Parameters	Unit	Color Code for Wind Speed and Pollution Concentration Class						
		0.3 ≤ WS < 1.4	1.4 ≤ WS < 3.1	3.1 ≤ WS < 7.8	7.8 ≤ WS < 10.8	10.8 ≤ WS < 13.6	WS ≥ 13.6	
SO <sub>2</sub>	ppb	0 ≤ C < 1	1 ≤ C < 5	5 ≤ C < 10	10 ≤ C < 57	57 ≤ C < 172	C ≥ 172	
NO <sub>2</sub>	ppb	0 ≤ C < 5	5 ≤ C < 15	15 ≤ C < 30	30 ≤ C < 100	100 ≤ C < 212	C ≥ 212	
H <sub>2</sub> S	ppb	0 ≤ C < 1	1 ≤ C < 3.6	3.6 ≤ C < 5	5 ≤ C < 8	8 ≤ C < 10.8	C ≥ 10.8	
O <sub>3</sub>	ppb	0 ≤ C < 10	10 ≤ C < 20	20 ≤ C < 40	40 ≤ C < 60	60 ≤ C < 82	C ≥ 82	
PM <sub>2.5</sub>	µg/m <sup>3</sup>	0 ≤ C < 2	2 ≤ C < 4	4 ≤ C < 10	10 ≤ C < 20	20 ≤ C < 30	C ≥ 30	

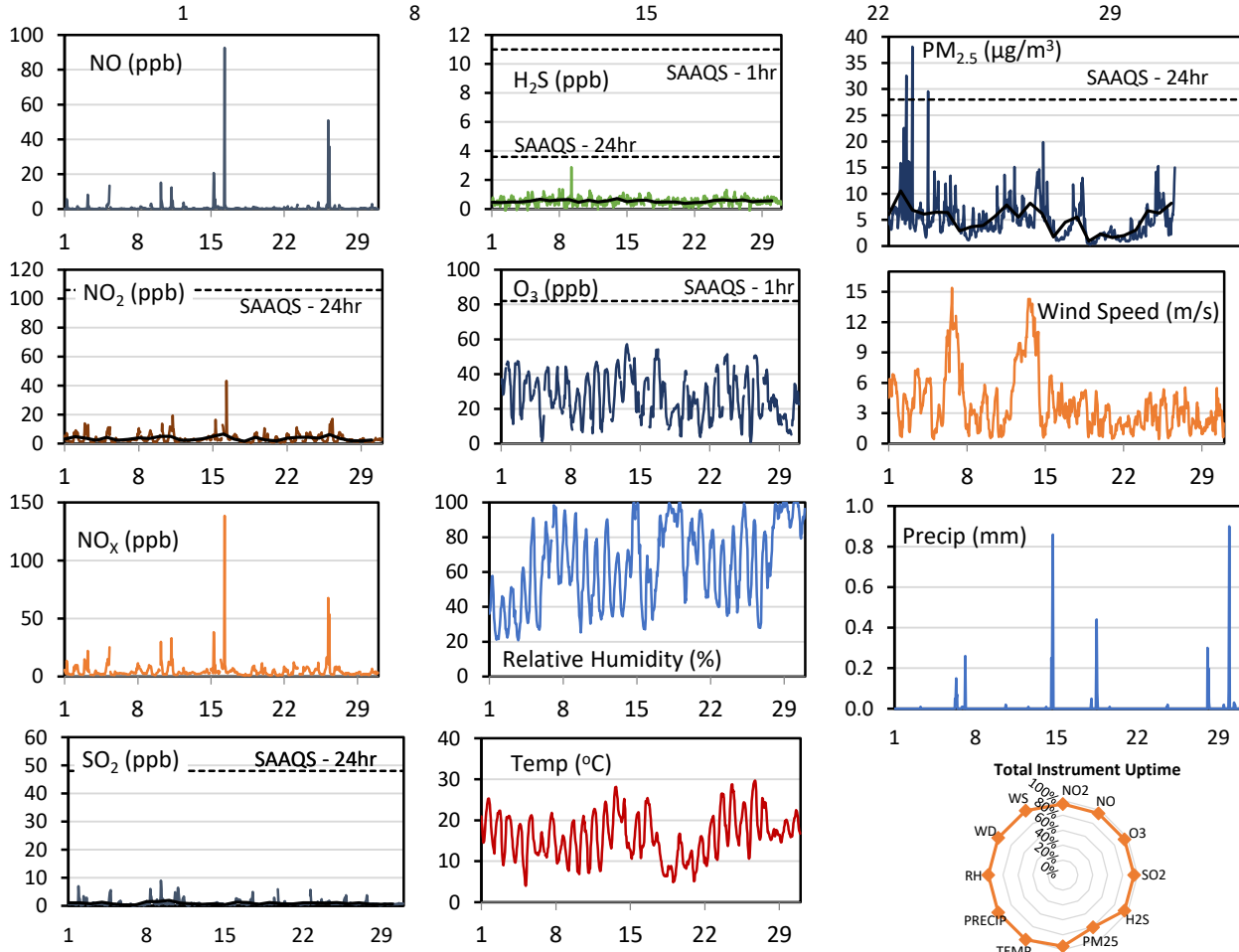
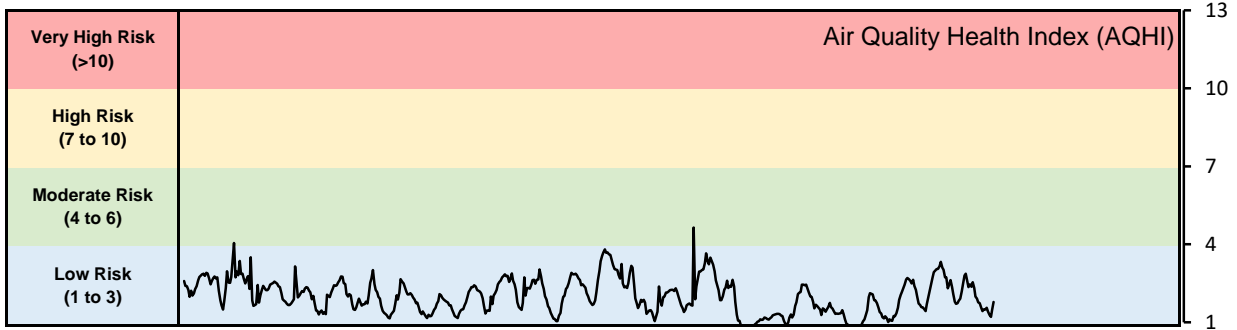
**Monthly Update**

- Achieved > 95% of scheduled uptime for all parameters
- Downtime of <5% due to routine daily internal zeroes and spans

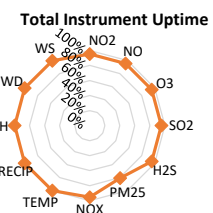
## GPAZ Regina Station - June 2020 Summary Report

Pollutants		Month Records		24-Hour Records				1-Hour Records			
Name	Conc. Unit	Avg. Conc.	Total Uptime	Maximum		SAAQS Standard	Exceed Days	Maximum		SAAQS Standard	Exceed Hours
				Conc.	Time			Conc.	Time		
NO	ppb	0.8	95%	4.7	Jun-26	-	-	92.6	Jun-16 07:00	-	-
NO <sub>2</sub>	ppb	3.5	95%	6.6	Jun-16	106	0	43.3	Jun-16 07:00	159	0
NO <sub>x</sub>	ppb	4.6	95%	11.5	Jun-16	-	-	138.5	Jun-16 07:00	-	-
SO <sub>2</sub>	ppb	0.9	95%	1.9	Jun-10	48	0	9.0	Jun-09 07:00	172	0
H <sub>2</sub> S	ppb	0.5	95%	0.7	Jun-14	3.6	0	2.9	Jun-09 06:00	11	0
O <sub>3</sub>	ppb	27.2	95%	42.2	Jun-13	-	-	57.2	Jun-13 16:00	82	0
PM <sub>2.5</sub>	µg/m <sup>3</sup>	5.1	81%	10.6	Jun-02	28	0	38.1	Jun-03 00:00	-	-

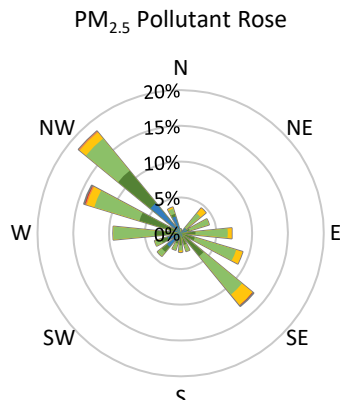
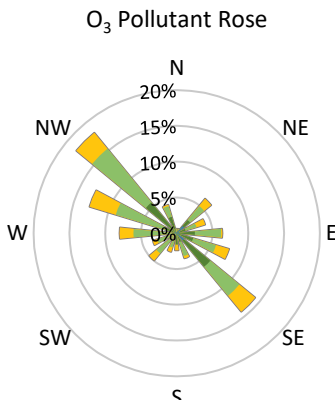
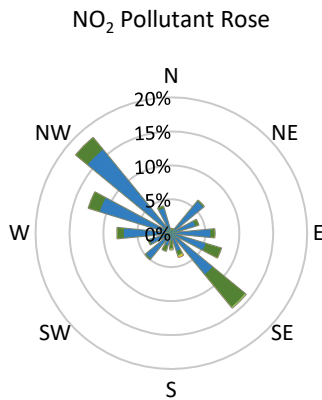
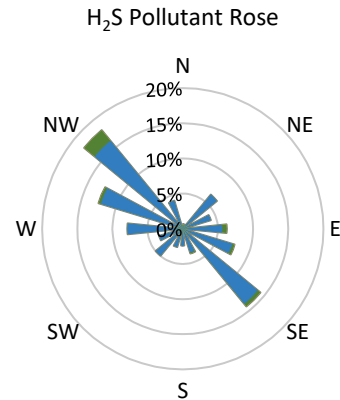
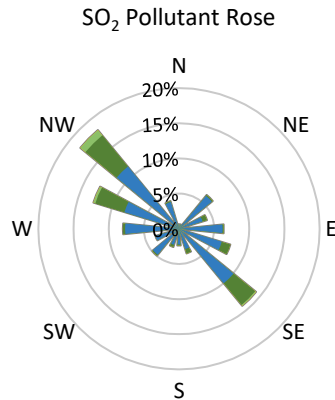
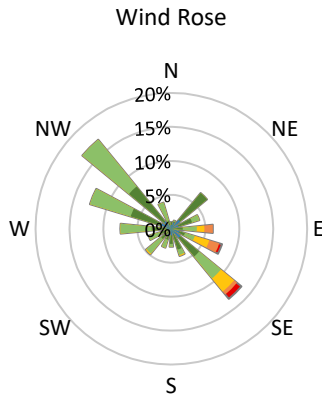
SAAQS: Saskatchewan Ambient Air Quality Standards



\* colored lines indicate 1-hr concentration data for all parameters; solid black lines indicate 24-hr concentrations for PM<sub>2.5</sub>, NO<sub>2</sub>, SO<sub>2</sub>, and H<sub>2</sub>S



**GPAZ Regina Station - June 2020 Summary Report**



Parameters	Unit	Color Code for Wind Speed and Pollution Concentration Class						
		0.3 ≤ WS < 1.4	1.4 ≤ WS < 3.1	3.1 ≤ WS < 7.8	7.8 ≤ WS < 10.8	10.8 ≤ WS < 13.6	WS ≥ 13.6	
SO <sub>2</sub>	ppb	0 ≤ C < 1	1 ≤ C < 5	5 ≤ C < 10	10 ≤ C < 57	57 ≤ C < 172	C ≥ 172	
NO <sub>2</sub>	ppb	0 ≤ C < 5	5 ≤ C < 15	15 ≤ C < 30	30 ≤ C < 100	100 ≤ C < 212	C ≥ 212	
H <sub>2</sub> S	ppb	0 ≤ C < 1	1 ≤ C < 3.6	3.6 ≤ C < 5	5 ≤ C < 8	8 ≤ C < 10.8	C ≥ 10.8	
O <sub>3</sub>	ppb	0 ≤ C < 10	10 ≤ C < 20	20 ≤ C < 40	40 ≤ C < 60	60 ≤ C < 82	C ≥ 82	
PM <sub>2.5</sub>	µg/m <sup>3</sup>	0 ≤ C < 2	2 ≤ C < 4	4 ≤ C < 10	10 ≤ C < 20	20 ≤ C < 30	C ≥ 30	

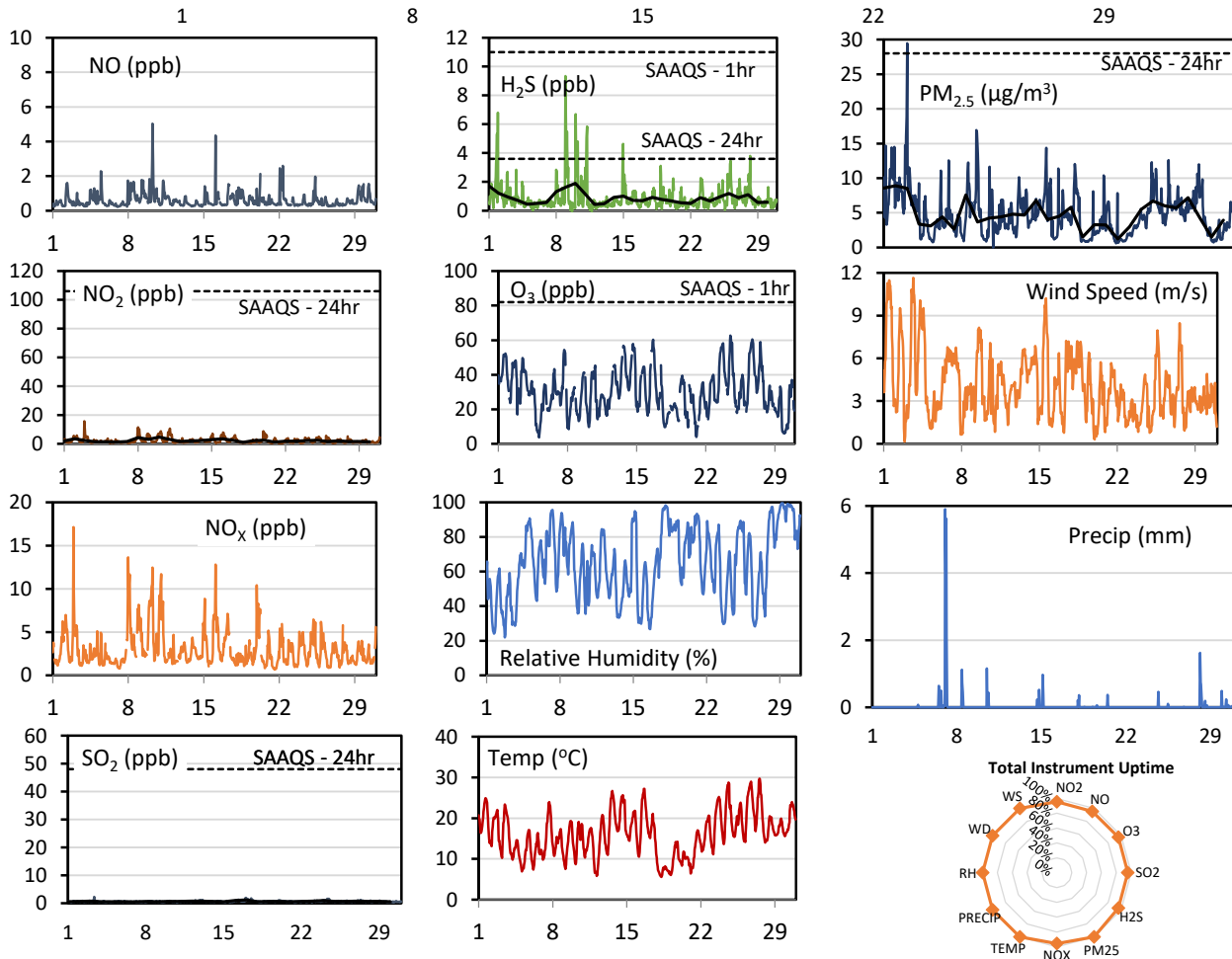
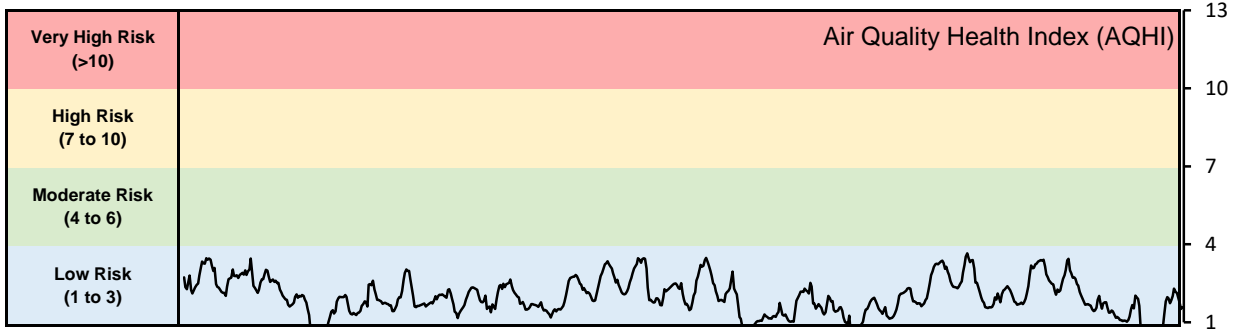
**Monthly Update**

- Achieved > 95% of scheduled uptime for all parameters except PM<sub>2.5</sub> (81%)
- Downtime of <5% due to routine daily internal zeroes and spans
- Downtime of 19% for PM<sub>2.5</sub> due to instrument malfunction

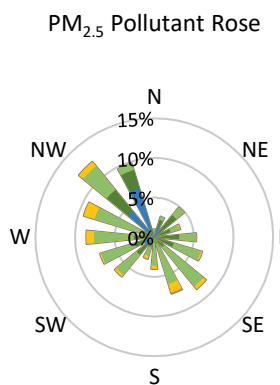
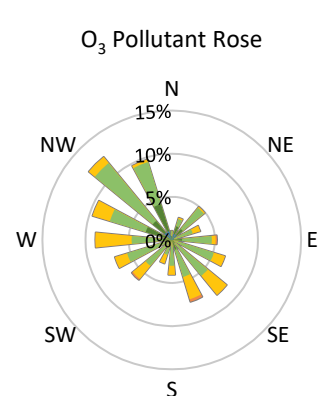
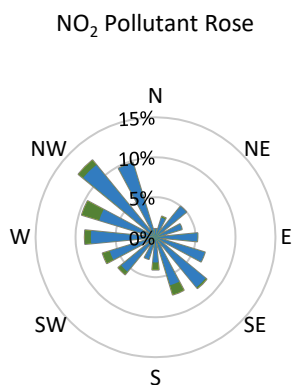
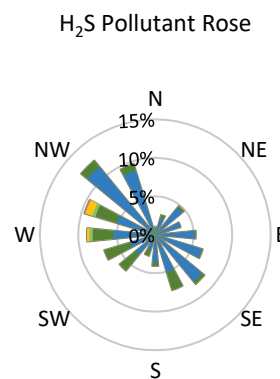
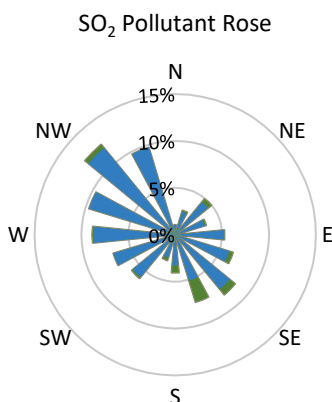
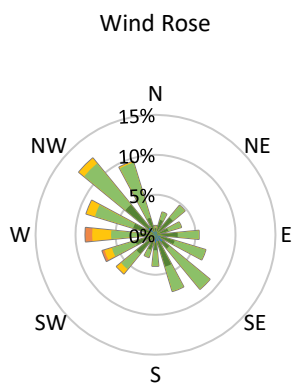
## GPAZ Yorkton Station - June 2020 Summary Report

Pollutants		Month Records		24-Hour Records				1-Hour Records			
Name	Conc. Unit	Avg. Conc.	Total Uptime	Maximum		SAAQS Standard	Exceed Days	Maximum		SAAQS Standard	Exceed Hours
				Conc.	Time			Conc.	Time		
NO	ppb	0.6	96%	1.1	Jun-10	-	-	5.0	Jun-10 06:00	-	-
NO <sub>2</sub>	ppb	2.2	96%	4.7	Jun-10	106	0	15.7	Jun-02 22:00	159	0
NO <sub>x</sub>	ppb	3.0	96%	6.0	Jun-10	-	-	17.1	Jun-02 22:00	-	-
SO <sub>2</sub>	ppb	0.7	96%	1.2	Jun-17	48	0	2.3	Jun-03 09:00	172	0
H <sub>2</sub> S	ppb	0.9	96%	1.9	Jun-10	3.6	0	9.3	Jun-08 23:00	11	0
O <sub>3</sub>	ppb	30.3	96%	43.6	Jun-26	-	-	62.7	Jun-24 12:00	82	0
PM <sub>2.5</sub>	µg/m <sup>3</sup>	4.8	100%	8.9	Jun-02	28	0	29.5	Jun-03 00:00	-	-

SAAQS: Saskatchewan Ambient Air Quality Standards



\* colored lines indicate 1-hr concentration data for all parameters; solid black lines indicate 24-hr concentrations for PM<sub>2.5</sub>, NO<sub>2</sub>, SO<sub>2</sub>, and H<sub>2</sub>S



Parameters	Unit	Color Code for Wind Speed and Pollution Concentration Class					
		0.3 ≤ WS < 1.4	1.4 ≤ WS < 3.1	3.1 ≤ WS < 7.8	7.8 ≤ WS < 10.8	10.8 ≤ WS < 13.6	WS ≥ 13.6
SO <sub>2</sub>	ppb	0 ≤ C < 1	1 ≤ C < 5	5 ≤ C < 10	10 ≤ C < 57	57 ≤ C < 172	C ≥ 172
NO <sub>2</sub>	ppb	0 ≤ C < 5	5 ≤ C < 15	15 ≤ C < 30	30 ≤ C < 100	100 ≤ C < 212	C ≥ 212
H <sub>2</sub> S	ppb	0 ≤ C < 1	1 ≤ C < 3.6	3.6 ≤ C < 5	5 ≤ C < 8	8 ≤ C < 10.8	C ≥ 10.8
O <sub>3</sub>	ppb	0 ≤ C < 10	10 ≤ C < 20	20 ≤ C < 40	40 ≤ C < 60	60 ≤ C < 82	C ≥ 82
PM <sub>2.5</sub>	µg/m <sup>3</sup>	0 ≤ C < 2	2 ≤ C < 4	4 ≤ C < 10	10 ≤ C < 20	20 ≤ C < 30	C ≥ 30

**Monthly Update**

- Achieved > 95% of scheduled uptime for all parameters
- Downtime of <5% due to routine daily internal zeroes and spans