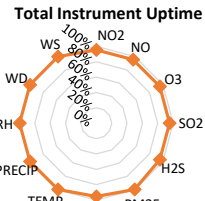
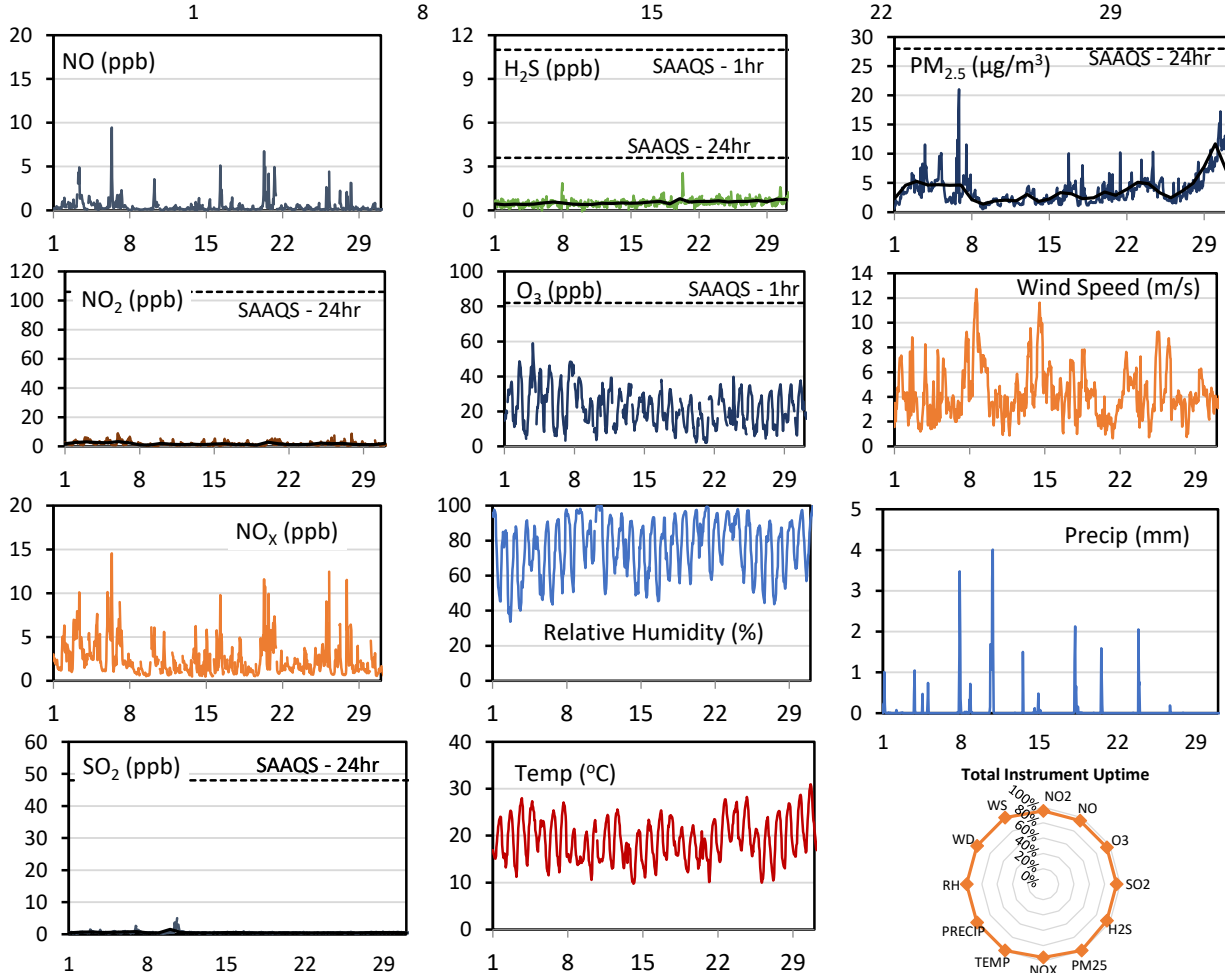
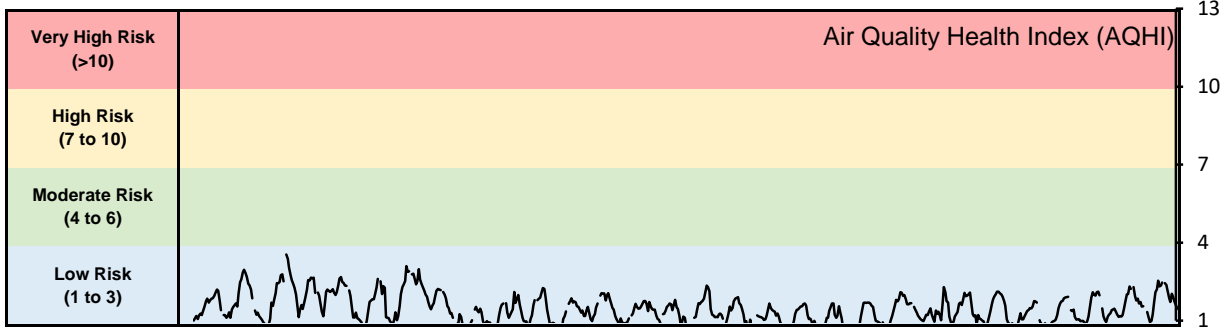


GPAZ Pense Station - July 2020 Summary Report

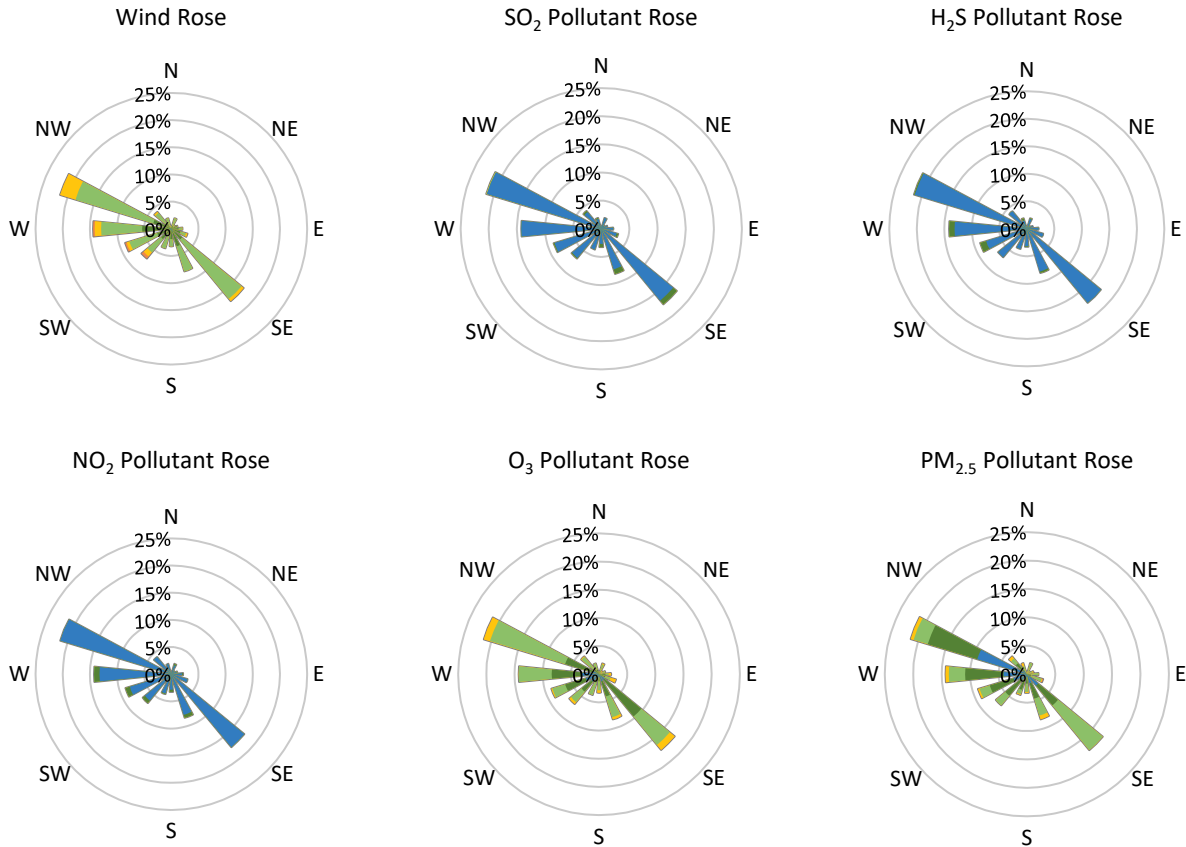
Pollutants		Month Records		24-Hour Records				1-Hour Records			
Name	Conc. Unit	Avg. Conc.	Total Uptime	Maximum		SAAQS Standard	Exceed Days	Maximum		SAAQS Standard	Exceed Hours
				Conc.	Time			Conc.	Time		
NO	ppb	0.5	95%	1.4	Jul-06	-	-	9.5	Jul-06 08:00	-	-
NO ₂	ppb	1.8	95%	3.3	Jul-06	106	0	9.0	Jul-05 23:00	159	0
NO _x	ppb	2.4	95%	4.9	Jul-06	-	-	14.6	Jul-06 08:00	-	-
SO ₂	ppb	0.5	95%	1.5	Jul-10	48	0	5.0	Jul-10 15:00	172	0
H ₂ S	ppb	0.5	95%	0.8	Jul-20	3.6	0	2.6	Jul-20 08:00	11	0
O ₃	ppb	22.0	95%	33.5	Jul-07	-	-	59.0	Jul-03 20:00	82	0
PM _{2.5}	µg/m ³	3.9	100%	11.7	Jul-30	28	0	21.0	Jul-06 20:00	-	-

SAAQS: Saskatchewan Ambient Air Quality Standards



* colored lines indicate 1-hr concentration data for all parameters; solid black lines indicate 24-hr concentrations for PM_{2.5}, NO₂, SO₂, and H₂S

GPAZ Pense Station - July 2020 Summary Report



Parameters	Unit	Color Code for Wind Speed and Pollution Concentration Class						
Wind Speed	m/s	$0.3 \leq WS < 1.4$	$1.4 \leq WS < 3.1$	$3.1 \leq WS < 7.8$	$7.8 \leq WS < 10.8$	$10.8 \leq WS < 13.6$	$WS \geq 13.6$	
SO ₂	ppb	$0 \leq C < 1$	$1 \leq C < 5$	$5 \leq C < 10$	$10 \leq C < 57$	$57 \leq C < 172$	$C \geq 172$	
NO ₂	ppb	$0 \leq C < 5$	$5 \leq C < 15$	$15 \leq C < 30$	$30 \leq C < 100$	$100 \leq C < 212$	$C \geq 212$	
H ₂ S	ppb	$0 \leq C < 1$	$1 \leq C < 3.6$	$3.6 \leq C < 5$	$5 \leq C < 8$	$8 \leq C < 10.8$	$C \geq 10.8$	
O ₃	ppb	$0 \leq C < 10$	$10 \leq C < 20$	$20 \leq C < 40$	$40 \leq C < 60$	$60 \leq C < 82$	$C \geq 82$	
PM _{2.5}	$\mu\text{g}/\text{m}^3$	$0 \leq C < 2$	$2 \leq C < 4$	$4 \leq C < 10$	$10 \leq C < 20$	$20 \leq C < 30$	$C \geq 30$	

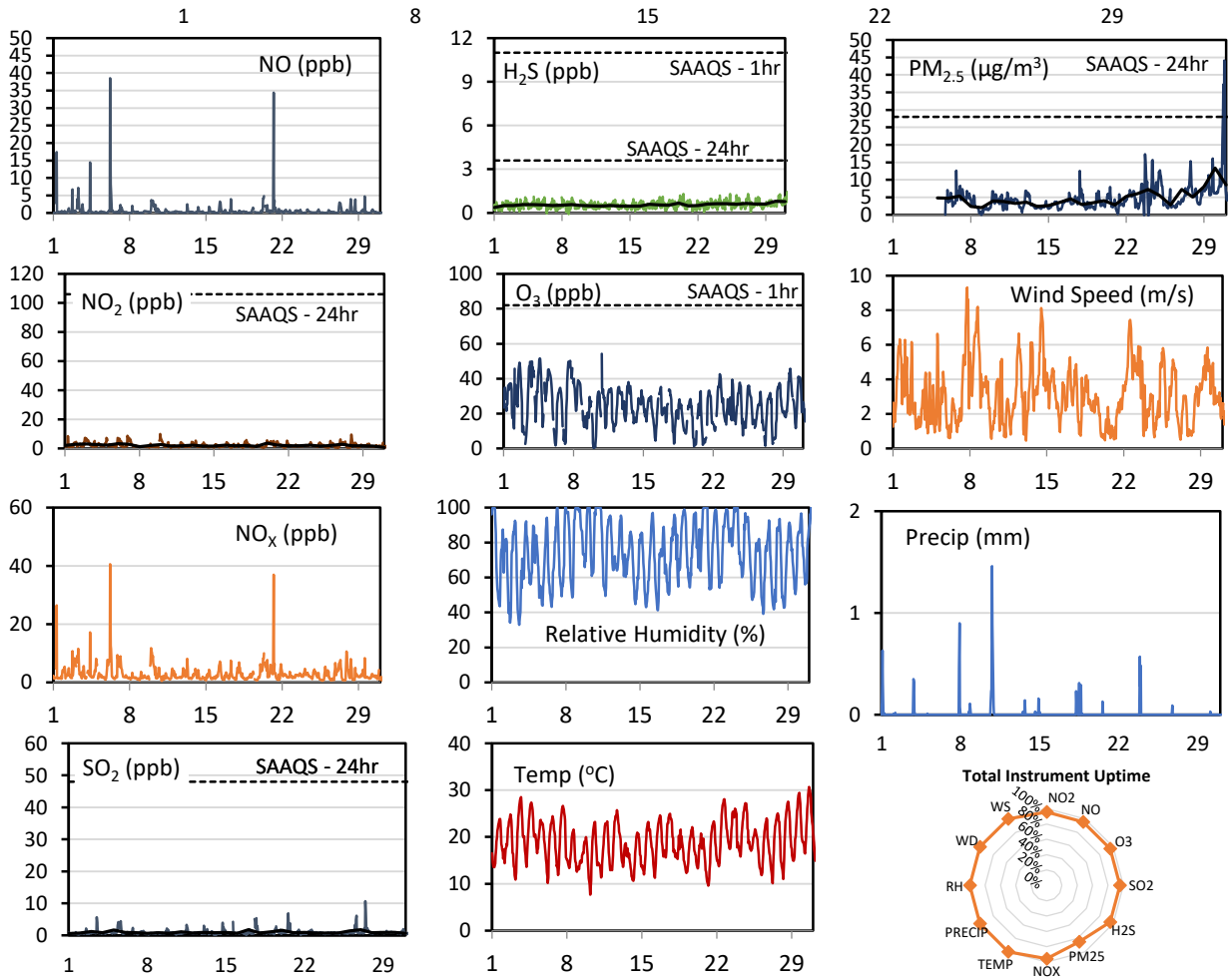
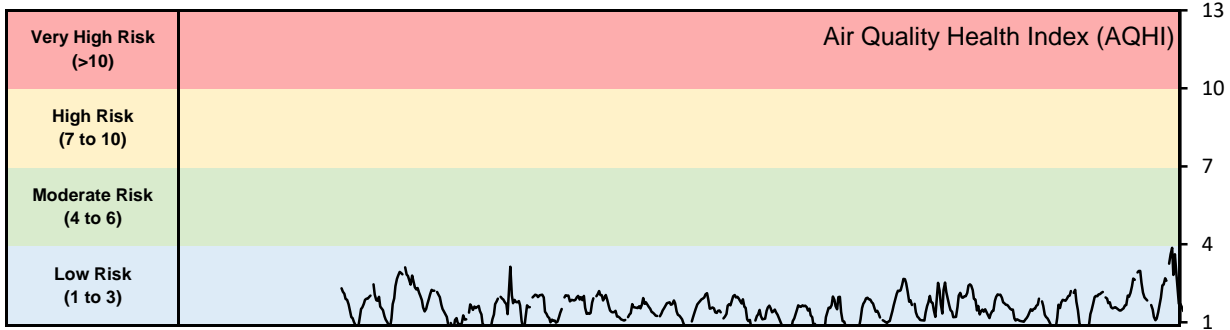
Monthly Update

- Achieved at least 95% of scheduled uptime for all parameters
- Downtime of <5% due to routine daily internal zeroes and spans

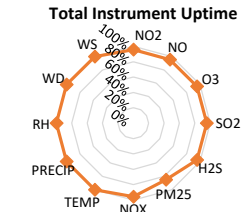
GPAZ Regina Station - July 2020 Summary Report

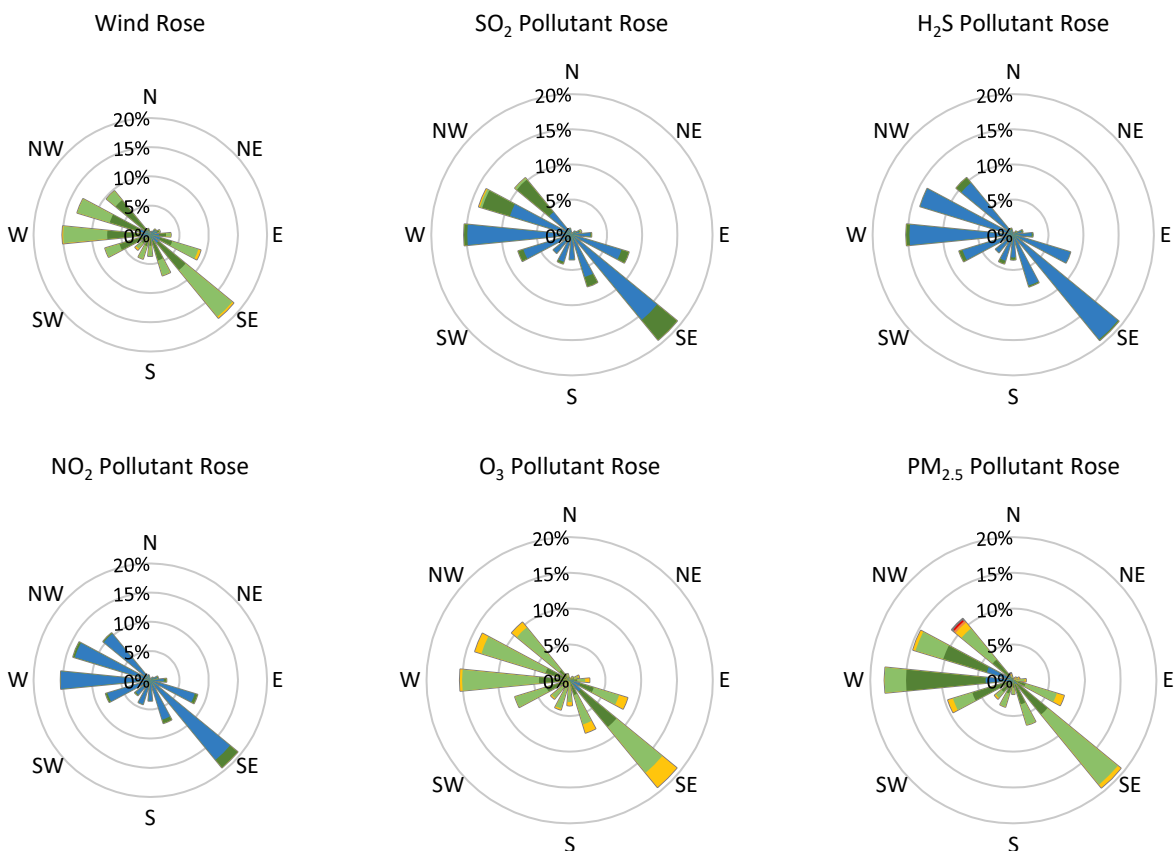
Pollutants		Month Records		24-Hour Records				1-Hour Records			
Name	Conc. Unit	Avg. Conc.	Total Uptime	Maximum		SAAQS Standard	Exceed Days	Maximum		SAAQS Standard	Exceed Hours
				Conc.	Time			Conc.	Time		
NO	ppb	0.6	96%	2.7	Jul-06	-	-	38.5	Jul-06 05:00	-	-
NO ₂	ppb	2.1	96%	3.6	Jul-20	106	0	9.9	Jul-09 23:00	159	0
NO _x	ppb	2.9	96%	6.1	Jul-06	-	-	40.6	Jul-06 05:00	-	-
SO ₂	ppb	0.9	96%	1.8	Jul-27	48	0	10.7	Jul-27 10:00	172	0
H ₂ S	ppb	0.6	96%	0.8	Jul-30	3.6	0	1.5	Jul-31 06:00	11	0
O ₃	ppb	24.4	96%	35.1	Jul-05	-	-	54.2	Jul-10 20:00	82	0
PM _{2.5}	µg/m ³	4.8	85%	13.4	Jul-30	28	0	44.1	Jul-30 20:00	-	-

SAAQS: Saskatchewan Ambient Air Quality Standards



* colored lines indicate 1-hr concentration data for all parameters; solid black lines indicate 24-hr concentrations for PM_{2.5}, NO₂, SO₂, and H₂S





Parameters	Unit	Color Code for Wind Speed and Pollution Concentration Class						
Wind Speed	m/s	$0.3 \leq WS < 1.4$	$1.4 \leq WS < 3.1$	$3.1 \leq WS < 7.8$	$7.8 \leq WS < 10.8$	$10.8 \leq WS < 13.6$	$WS \geq 13.6$	
SO ₂	ppb	$0 \leq C < 1$	$1 \leq C < 5$	$5 \leq C < 10$	$10 \leq C < 57$	$57 \leq C < 172$	$C \geq 172$	
NO ₂	ppb	$0 \leq C < 5$	$5 \leq C < 15$	$15 \leq C < 30$	$30 \leq C < 100$	$100 \leq C < 212$	$C \geq 212$	
H ₂ S	ppb	$0 \leq C < 1$	$1 \leq C < 3.6$	$3.6 \leq C < 5$	$5 \leq C < 8$	$8 \leq C < 10.8$	$C \geq 10.8$	
O ₃	ppb	$0 \leq C < 10$	$10 \leq C < 20$	$20 \leq C < 40$	$40 \leq C < 60$	$60 \leq C < 82$	$C \geq 82$	
PM _{2.5}	$\mu\text{g}/\text{m}^3$	$0 \leq C < 2$	$2 \leq C < 4$	$4 \leq C < 10$	$10 \leq C < 20$	$20 \leq C < 30$	$C \geq 30$	

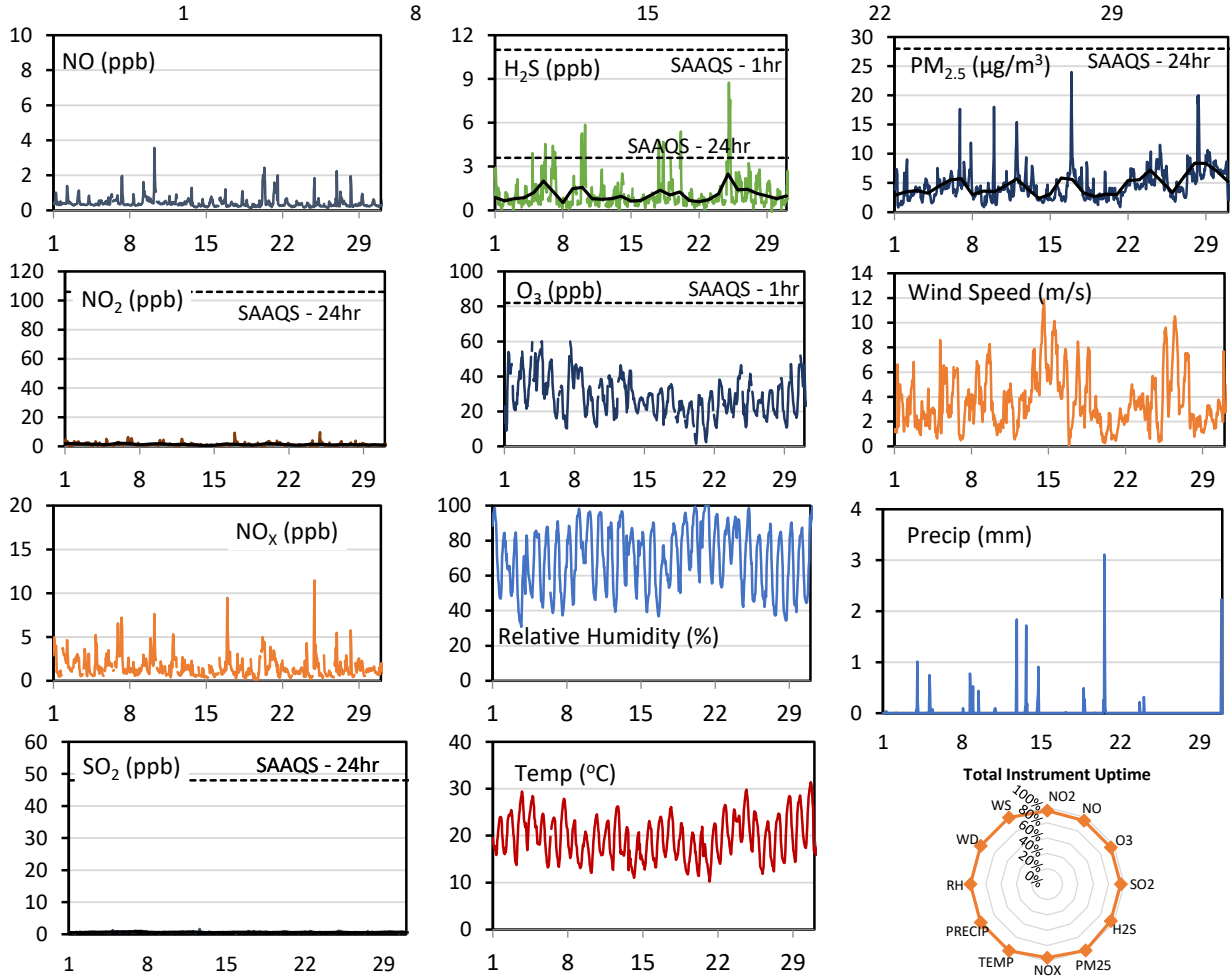
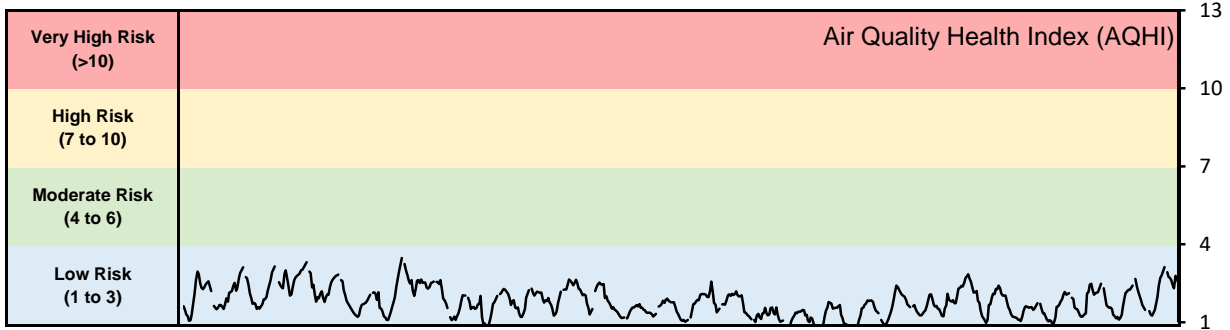
Monthly Update

- Achieved at least 95% of scheduled uptime for all parameters, except PM_{2.5} (84.8%)
- Downtime of <5% due to routine daily internal zeroes and spans
- Downtime of 15.2% for PM_{2.5} due to instrument malfunction, proper operation resumed on July 05, 2020

GPAZ Yorkton Station - July 2020 Summary Report

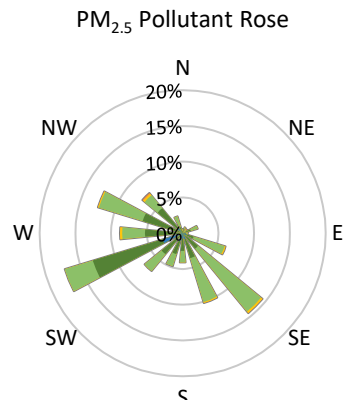
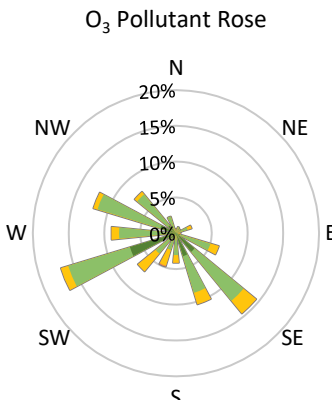
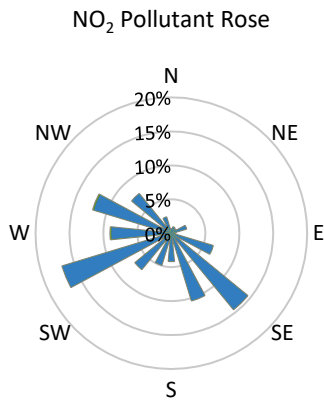
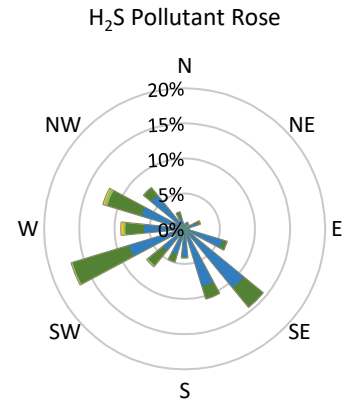
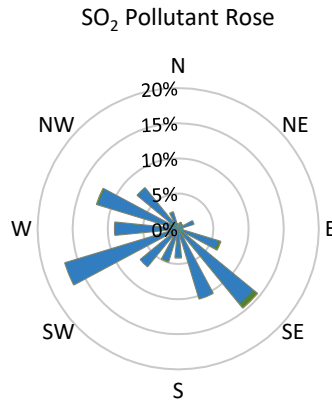
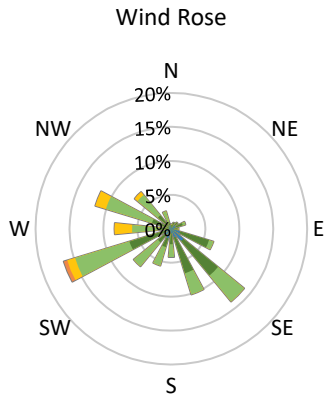
Pollutants		Month Records		24-Hour Records				1-Hour Records			
Name	Conc. Unit	Avg. Conc.	Total Uptime	Maximum		SAAQS Standard	Exceed Days	Maximum		SAAQS Standard	Exceed Hours
				Conc.	Time			Conc.	Time		
NO	ppb	0.4	96%	0.8	Jul-20	-	-	3.6	Jul-10 06:00	-	-
NO ₂	ppb	1.3	96%	2.1	Jul-06	106	0	9.8	Jul-24 22:00	159	0
NO _x	ppb	1.5	96%	2.5	Jul-20	-	-	11.5	Jul-24 22:00	-	-
SO ₂	ppb	0.6	95%	0.9	Jul-07	48	0	1.7	Jul-12 15:00	172	0
H ₂ S	ppb	1.1	95%	2.5	Jul-25	3.6	0	8.8	Jul-25 02:00	11	0
O ₃	ppb	28.2	95%	46.2	Jul-04	-	-	60.1	Jul-04 18:00	82	0
PM _{2.5}	µg/m ³	4.6	100%	8.4	Jul-28	28	0	24.0	Jul-16 22:00	-	-

SAAQS: Saskatchewan Ambient Air Quality Standards



* colored lines indicate 1-hr concentration data for all parameters; solid black lines indicate 24-hr concentrations for PM_{2.5}, NO₂, SO₂, and H₂S

GPAZ Yorkton Station - July 2020 Summary Report



Parameters	Unit	Color Code for Wind Speed and Pollution Concentration Class						
		0.3 ≤ WS < 1.4	1.4 ≤ WS < 3.1	3.1 ≤ WS < 7.8	7.8 ≤ WS < 10.8	10.8 ≤ WS < 13.6	WS ≥ 13.6	
SO ₂	ppb	0 ≤ C < 1	1 ≤ C < 5	5 ≤ C < 10	10 ≤ C < 57	57 ≤ C < 172	C ≥ 172	
NO ₂	ppb	0 ≤ C < 5	5 ≤ C < 15	15 ≤ C < 30	30 ≤ C < 100	100 ≤ C < 212	C ≥ 212	
H ₂ S	ppb	0 ≤ C < 1	1 ≤ C < 3.6	3.6 ≤ C < 5	5 ≤ C < 8	8 ≤ C < 10.8	C ≥ 10.8	
O ₃	ppb	0 ≤ C < 10	10 ≤ C < 20	20 ≤ C < 40	40 ≤ C < 60	60 ≤ C < 82	C ≥ 82	
PM _{2.5}	µg/m ³	0 ≤ C < 2	2 ≤ C < 4	4 ≤ C < 10	10 ≤ C < 20	20 ≤ C < 30	C ≥ 30	

Monthly Update

- Achieved at least 95% of scheduled uptime for all parameters
- Downtime of <5% due to routine daily internal zeroes and spans