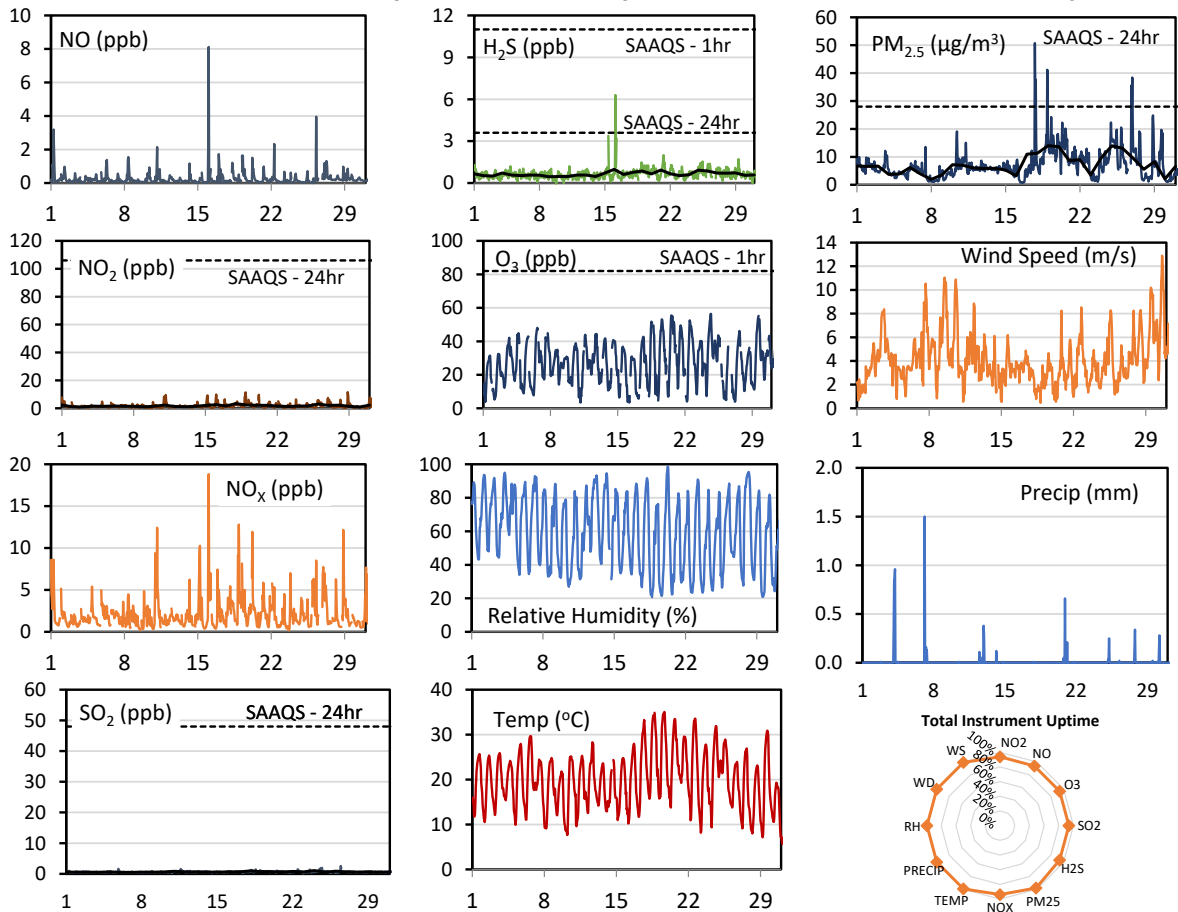
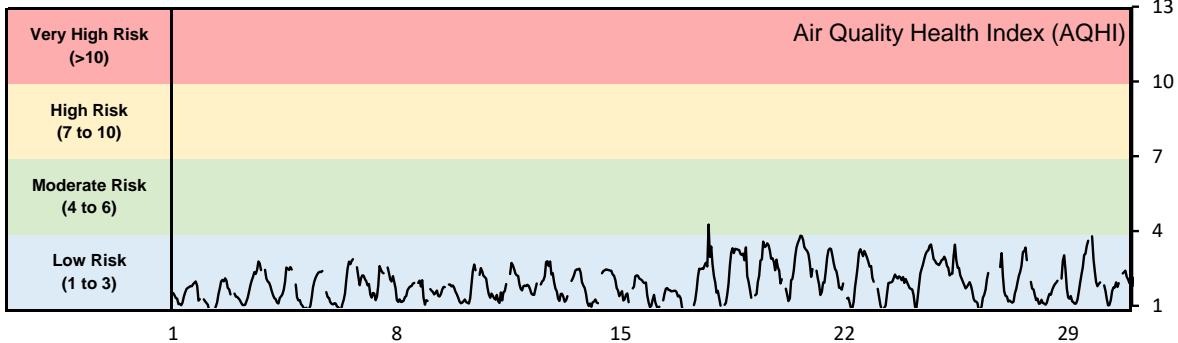


## GPAZ Pense Station - August 2020 Summary Report

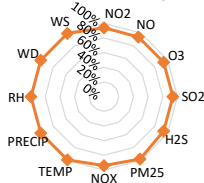
Pollutants		Month Records		24-Hour Records				1-Hour Records			
Name	Conc. Unit	Avg. Conc.	Total Uptime	Maximum		SAAQS Standard	Exceed Days	Maximum		SAAQS Standard	Exceed Hours
				Conc.	Time			Conc.	Time		
NO	ppb	0.3	94%	0.6	Aug-16	-	-	8.1	Aug-16 01:00	-	-
NO <sub>2</sub>	ppb	1.7	94%	3.3	Aug-18	106	0	11.6	Aug-28 21:00	159	0
NO <sub>x</sub>	ppb	2.1	94%	3.9	Aug-18	-	-	18.8	Aug-16 01:00	-	-
SO <sub>2</sub>	ppb	0.6	94%	1.1	Aug-24	48	0	2.6	Aug-26 11:00	172	0
H <sub>2</sub> S	ppb	0.6	94%	1.0	Aug-16	3.6	0	6.3	Aug-16 03:00	11	0
O <sub>3</sub>	ppb	27.1	94%	34.9	Aug-20	-	-	56.4	Aug-24 17:00	82	0
PM <sub>2.5</sub>	µg/m <sup>3</sup>	7.1	98%	14.0	Aug-19	28	0	50.7	Aug-17 18:00	-	-

SAAQS: Saskatchewan Ambient Air Quality Standards

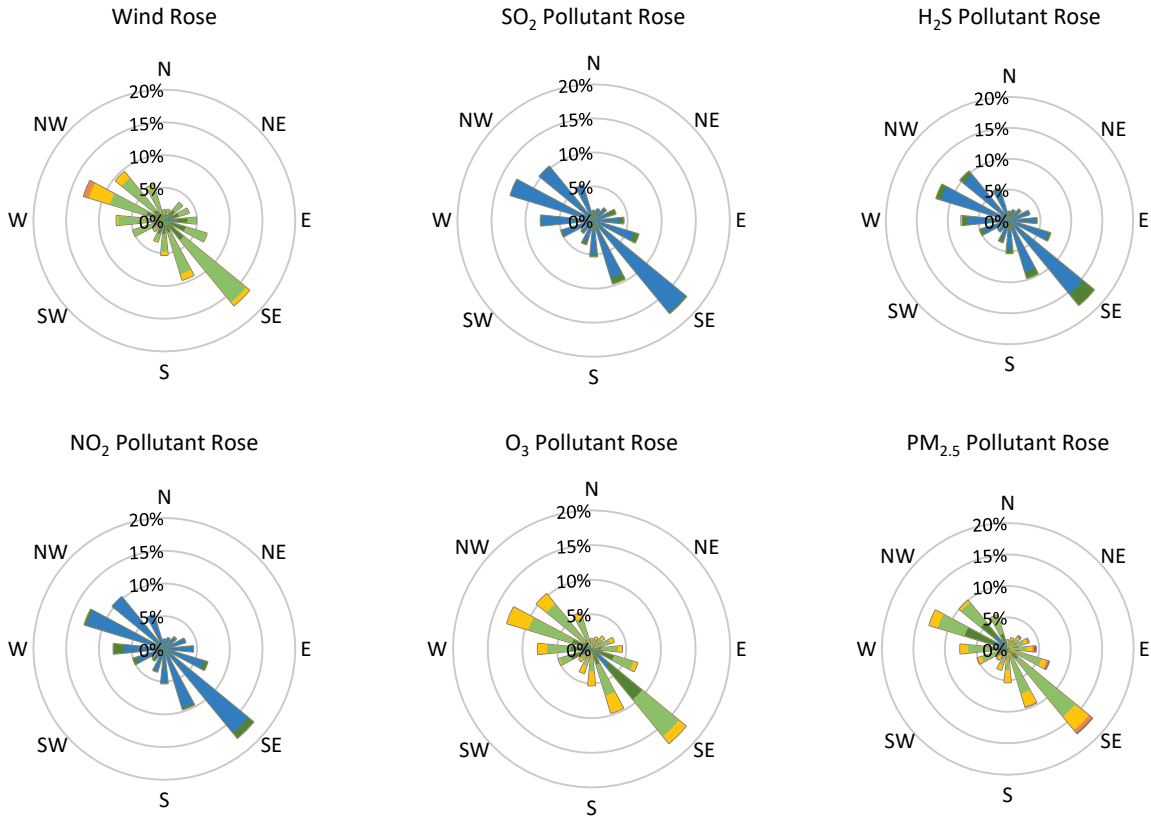


\* colored lines indicate 1-hr concentration data for all parameters; solid black lines indicate 24-hr concentrations for PM<sub>2.5</sub>, NO<sub>2</sub>, SO<sub>2</sub>, and H<sub>2</sub>S

Total Instrument Uptime



**GPAZ Pense Station - August 2020 Summary Report**



Parameters	Unit	Color Code for Wind Speed and Pollution Concentration Class						
		0.3 ≤ WS < 1.4	1.4 ≤ WS < 3.1	3.1 ≤ WS < 7.8	7.8 ≤ WS < 10.8	10.8 ≤ WS < 13.6	13.6 ≤ WS < 17.2	WS ≥ 17.2
SO <sub>2</sub>	ppb	0 ≤ C < 1	1 ≤ C < 5	5 ≤ C < 10	10 ≤ C < 57	57 ≤ C < 172	C ≥ 172	
NO <sub>2</sub>	ppb	0 ≤ C < 5	5 ≤ C < 15	15 ≤ C < 30	30 ≤ C < 100	100 ≤ C < 212	C ≥ 212	
H <sub>2</sub> S	ppb	0 ≤ C < 1	1 ≤ C < 3.6	3.6 ≤ C < 5	5 ≤ C < 8	8 ≤ C < 10.8	C ≥ 10.8	
O <sub>3</sub>	ppb	0 ≤ C < 10	10 ≤ C < 20	20 ≤ C < 40	40 ≤ C < 60	60 ≤ C < 82	C ≥ 82	
PM <sub>2.5</sub>	μg/m <sup>3</sup>	0 ≤ C < 2	2 ≤ C < 4	4 ≤ C < 10	10 ≤ C < 20	20 ≤ C < 30	C ≥ 30	

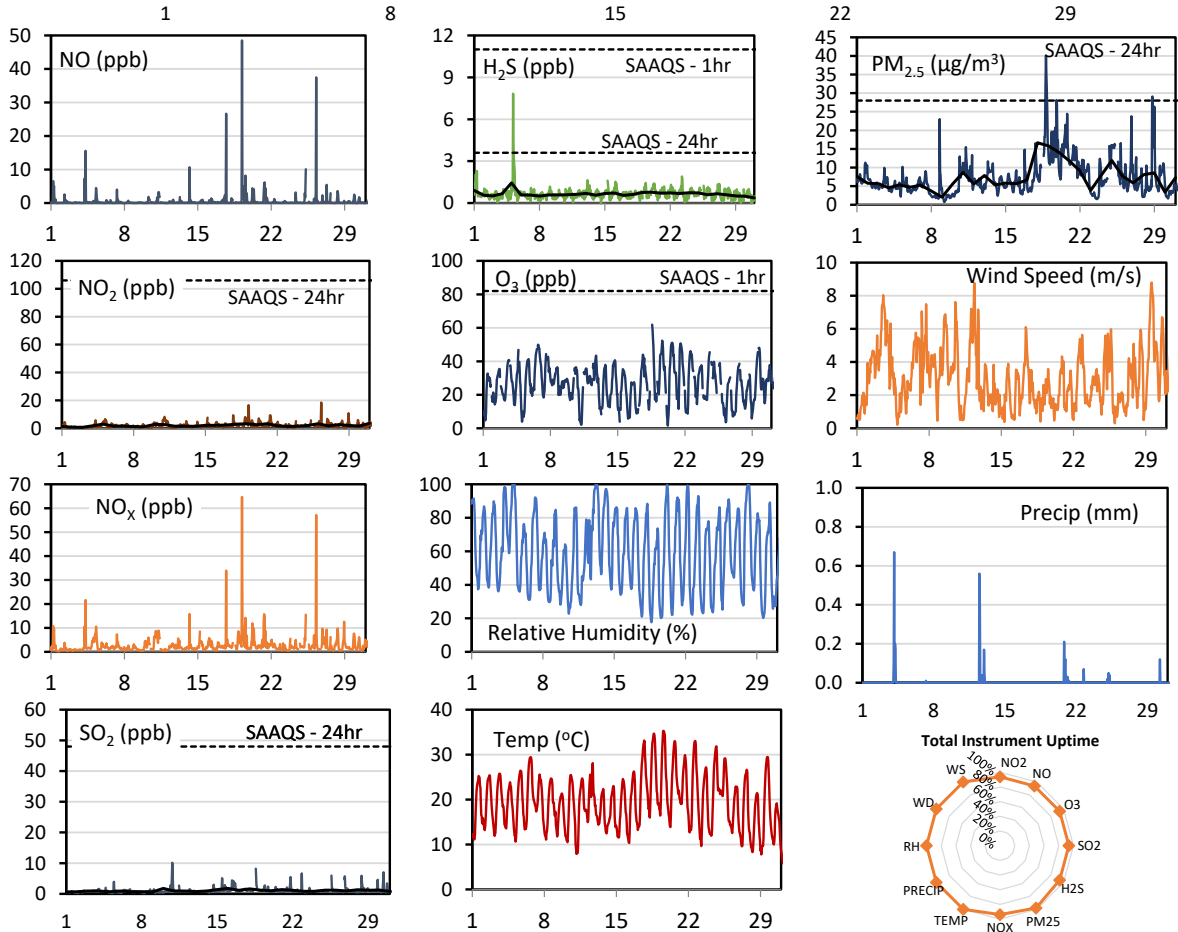
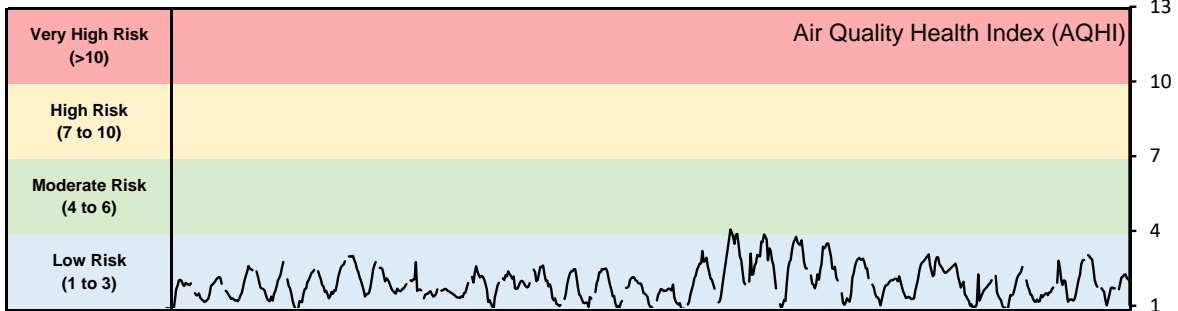
**Monthly Update**

- Achieved at least 94% of scheduled uptime for all parameters
- Downtime of <6% due to routine daily internal zeroes and spans, and quarterly calibration

## GPAZ Regina Station - August 2020 Summary Report

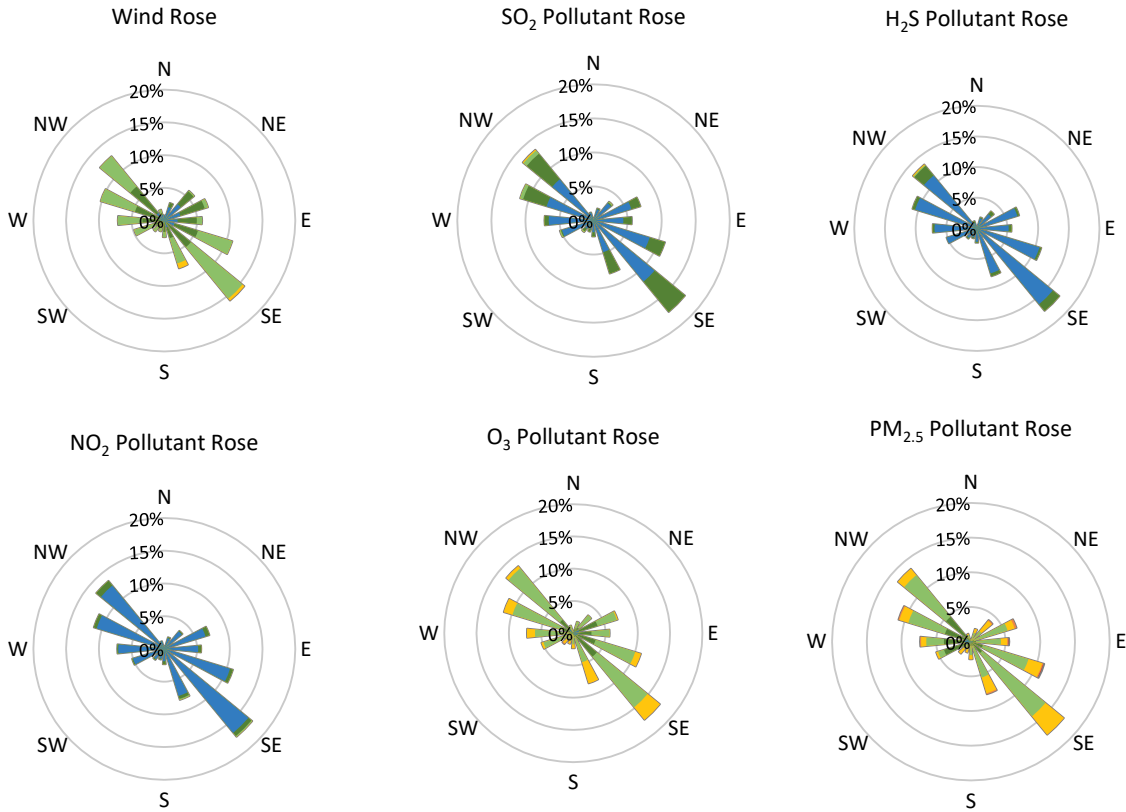
Pollutants		Month Records		24-Hour Records				1-Hour Records			
Name	Conc. Unit	Avg. Conc.	Total Uptime	Maximum		SAAQS Standard	Exceed Days	Maximum		SAAQS Standard	Exceed Hours
				Conc.	Time			Conc.	Time		
NO	ppb	0.6	94%	3.5	Aug-19	-	-	48.5	Aug-19 05:00	-	-
NO <sub>2</sub>	ppb	2.0	94%	3.6	Aug-31	106	0	18.5	Aug-26 07:00	159	0
NO <sub>x</sub>	ppb	2.8	94%	6.8	Aug-19	-	-	64.7	Aug-19 05:00	-	-
SO <sub>2</sub>	ppb	1.0	94%	1.8	Aug-10	48	0	10.1	Aug-10 20:00	172	0
H <sub>2</sub> S	ppb	0.7	94%	1.4	Aug-05	3.6	0	7.8	Aug-05 04:00	11	0
O <sub>3</sub>	ppb	26.7	94%	36.2	Aug-06	-	-	61.9	Aug-18 14:00	82	0
PM <sub>2.5</sub>	µg/m <sup>3</sup>	7.2	98%	16.7	Aug-18	28	0	40.1	Aug-18 19:00	-	-

SAAQS: Saskatchewan Ambient Air Quality Standards



\* colored lines indicate 1-hr concentration data for all parameters; solid black lines indicate 24-hr concentrations for PM<sub>2.5</sub>, NO<sub>2</sub>, SO<sub>2</sub>, and H<sub>2</sub>S

## GPAZ Regina Station - August 2020 Summary Report



Parameters	Unit	Color Code for Wind Speed and Pollution Concentration Class					
Wind Speed	m/s	$0.3 \leq WS < 1.4$	$1.4 \leq WS < 3.1$	$3.1 \leq WS < 7.8$	$7.8 \leq WS < 10.8$	$10.8 \leq WS < 13.6$	$WS \geq 13.6$
SO <sub>2</sub>	ppb	$0 \leq C < 1$	$1 \leq C < 5$	$5 \leq C < 10$	$10 \leq C < 57$	$57 \leq C < 172$	$C \geq 172$
NO <sub>2</sub>	ppb	$0 \leq C < 5$	$5 \leq C < 15$	$15 \leq C < 30$	$30 \leq C < 100$	$100 \leq C < 212$	$C \geq 212$
H <sub>2</sub> S	ppb	$0 \leq C < 1$	$1 \leq C < 3.6$	$3.6 \leq C < 5$	$5 \leq C < 8$	$8 \leq C < 10.8$	$C \geq 10.8$
O <sub>3</sub>	ppb	$0 \leq C < 10$	$10 \leq C < 20$	$20 \leq C < 40$	$40 \leq C < 60$	$60 \leq C < 82$	$C \geq 82$
PM <sub>2.5</sub>	$\mu\text{g}/\text{m}^3$	$0 \leq C < 2$	$2 \leq C < 4$	$4 \leq C < 10$	$10 \leq C < 20$	$20 \leq C < 30$	$C \geq 30$

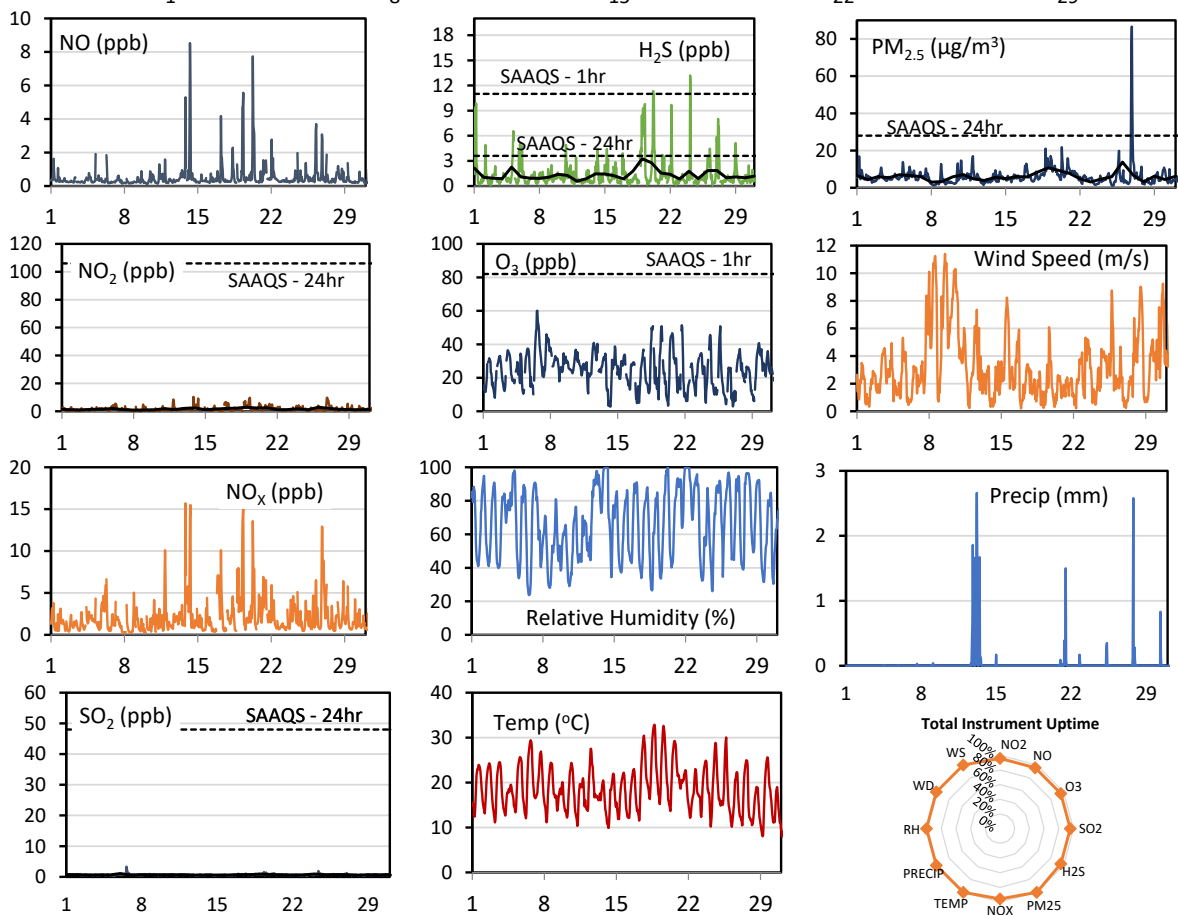
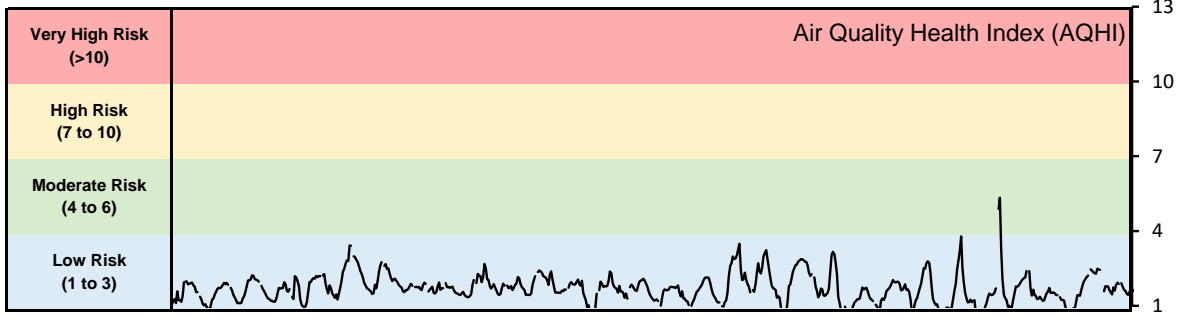
### Monthly Update

- Achieved at least 94% of scheduled uptime for all parameters
- Downtime of <6% due to routine daily internal zeroes and spans, and quarterly calibration

## GPAZ Yorkton Station - August 2020 Summary Report

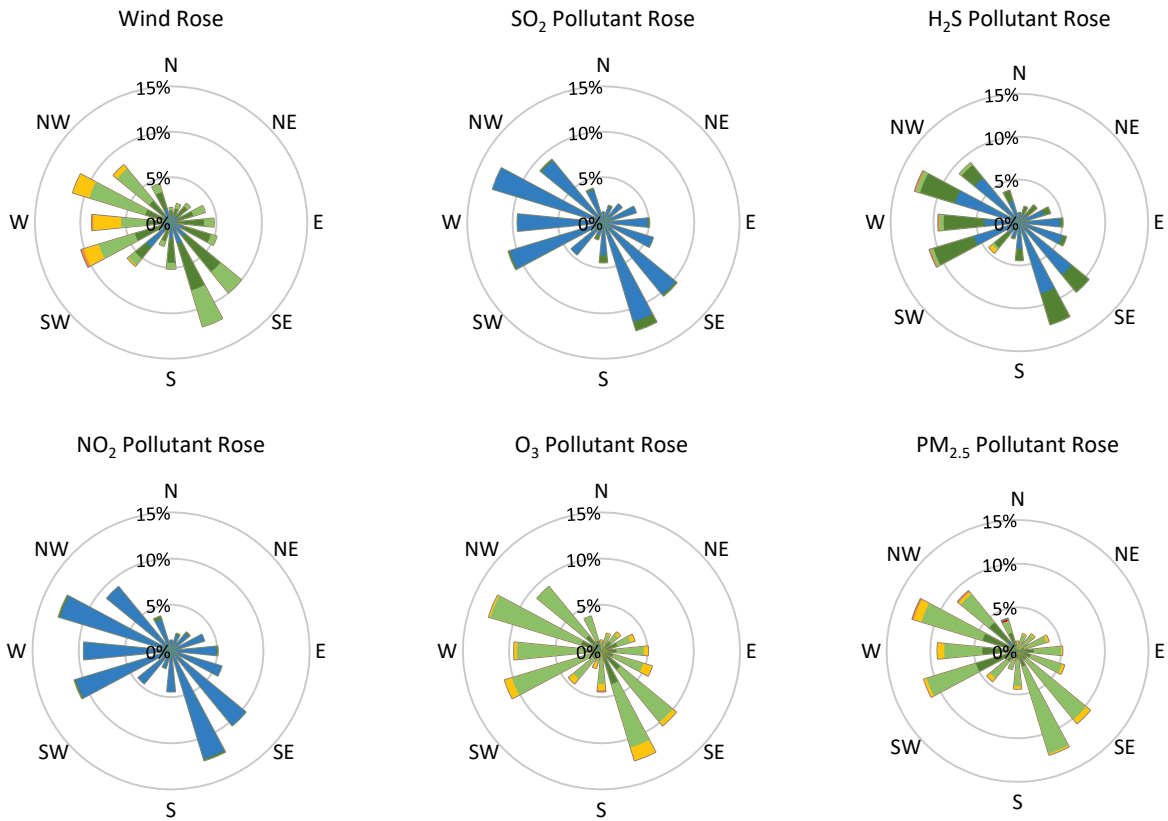
Pollutants		Month Records		24-Hour Records				1-Hour Records			
Name	Conc. Unit	Avg. Conc.	Total Uptime	Maximum		SAAQS Standard	Exceed Days	Maximum		SAAQS Standard	Exceed Hours
				Conc.	Time			Conc.	Time		
NO	ppb	0.5	96%	1.2	Aug-14	-	-	8.5	Aug-14 06:00	-	-
NO <sub>2</sub>	ppb	1.6	96%	2.9	Aug-19	106	0	10.4	Aug-13 20:00	159	0
NO <sub>x</sub>	ppb	2.1	96%	4.0	Aug-19	-	-	15.7	Aug-13 20:00	-	-
SO <sub>2</sub>	ppb	0.7	96%	1.1	Aug-06	48	0	3.3	Aug-06 14:00	172	0
H <sub>2</sub> S	ppb	1.4	96%	3.3	Aug-19	3.6	0	13.2	Aug-24 03:00	11	3
O <sub>3</sub>	ppb	24.8	96%	36.1	Aug-06	-	-	60.1	Aug-06 15:00	82	0
PM <sub>2.5</sub>	µg/m <sup>3</sup>	6.0	100%	13.8	Aug-26	28	0	86.6	Aug-26 21:00	-	-

SAAQS: Saskatchewan Ambient Air Quality Standards



\* colored lines indicate 1-hr concentration data for all parameters; solid black lines indicate 24-hr concentrations for PM<sub>2.5</sub>, NO<sub>2</sub>, SO<sub>2</sub>, and H<sub>2</sub>S

## GPAZ Yorkton Station - August 2020 Summary Report



Parameters	Unit	Color Code for Wind Speed and Pollution Concentration Class						
Wind Speed	m/s	0.3 ≤ WS < 1.4	1.4 ≤ WS < 3.1	3.1 ≤ WS < 7.8	7.8 ≤ WS < 10.8	10.8 ≤ WS < 13.6	WS ≥ 13.6	
SO <sub>2</sub>	ppb	0 ≤ C < 1	1 ≤ C < 5	5 ≤ C < 10	10 ≤ C < 57	57 ≤ C < 172	C ≥ 172	
NO <sub>2</sub>	ppb	0 ≤ C < 5	5 ≤ C < 15	15 ≤ C < 30	30 ≤ C < 100	100 ≤ C < 212	C ≥ 212	
H <sub>2</sub> S	ppb	0 ≤ C < 1	1 ≤ C < 3.6	3.6 ≤ C < 5	5 ≤ C < 8	8 ≤ C < 10.8	C ≥ 10.8	
O <sub>3</sub>	ppb	0 ≤ C < 10	10 ≤ C < 20	20 ≤ C < 40	40 ≤ C < 60	60 ≤ C < 82	C ≥ 82	
PM <sub>2.5</sub>	µg/m <sup>3</sup>	0 ≤ C < 2	2 ≤ C < 4	4 ≤ C < 10	10 ≤ C < 20	20 ≤ C < 30	C ≥ 30	

### Monthly Update

- Achieved at least 95% of scheduled uptime for all parameters
- Downtime of <5% due to routine daily internal zeroes and spans

### Exceedance Summary (1- Hour Average - Exceedances in Bold)

Exceedance Time	AQHI	NO <sub>2</sub> ppb	NO ppb	SO <sub>2</sub> ppb	O <sub>3</sub> ppb	NO <sub>x</sub> ppb	H <sub>2</sub> S ppb	PM <sub>2.5</sub> µg/m <sup>3</sup>	WD deg	WS m/s
Aug-20 04:00	0.7	2.0	0.5	1.1	6.1	2.4	<b>11.4</b>	5.2	36.5	0.3
Aug-24 03:00	0.8	2.8	0.4	0.9	7.7	3.2	<b>13.2</b>	3.7	40.7	0.5
Aug-24 04:00	0.7	2.6	0.3	0.7	5.1	2.9	<b>12.2</b>	3.8	36.4	0.6