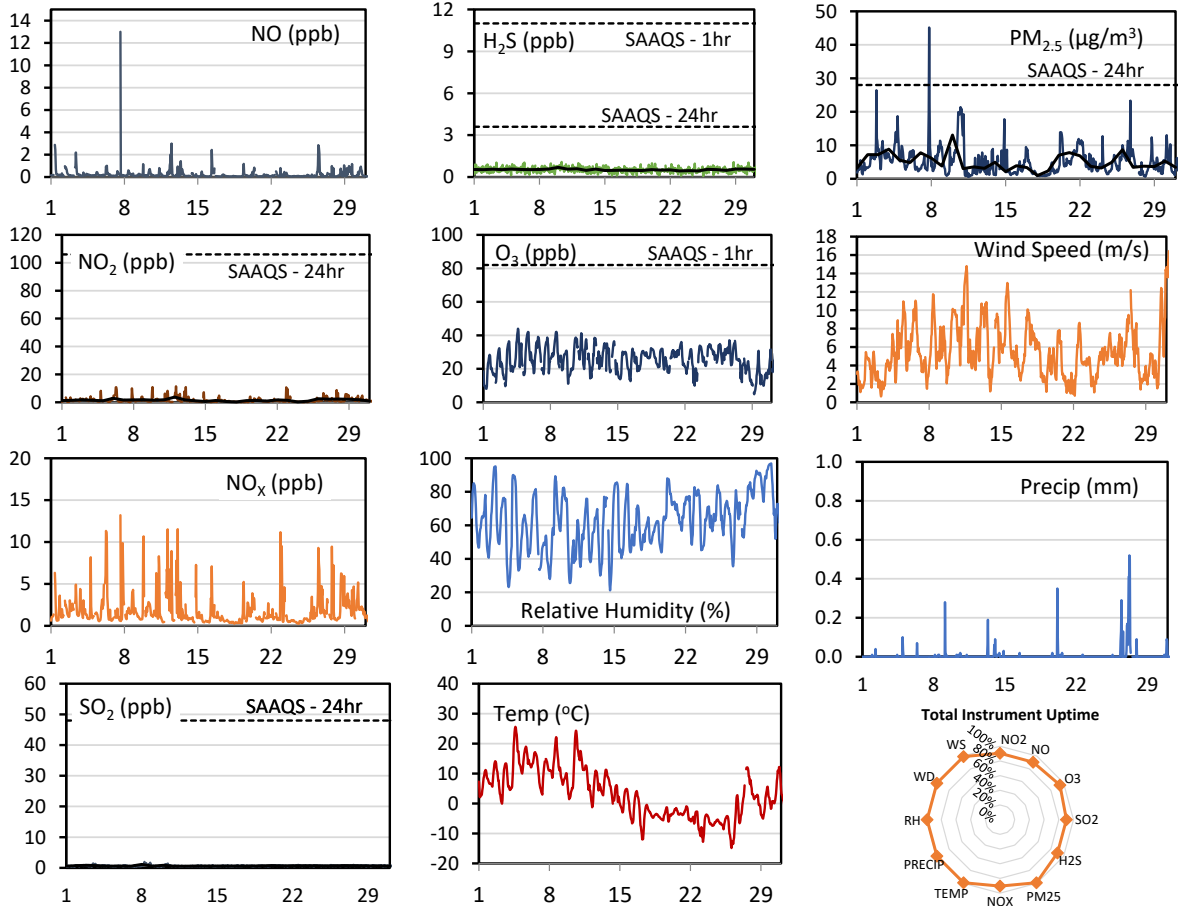
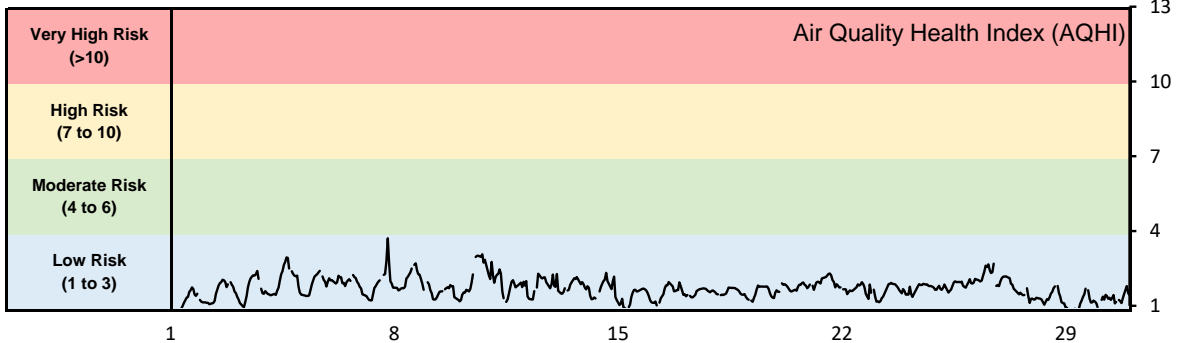


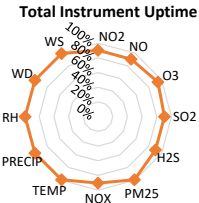
GPAZ Pense Station - October 2020 Summary Report

Pollutants		Month Records		24-Hour Records				1-Hour Records			
Name	Conc. Unit	Avg. Conc.	Total Uptime	Maximum		SAAQS Standard	Exceed Days	Maximum		SAAQS Standard	Exceed Hours
				Conc.	Time			Conc.	Time		
NO	ppb	0.3	90%	0.8	Oct-07	-	-	13.0	Oct-07 15:00	-	-
NO ₂	ppb	1.5	90%	3.7	Oct-12	106	0	11.4	Oct-12 03:00	159	0
NO _x	ppb	1.8	90%	4.2	Oct-12	-	-	13.2	Oct-07 15:00	-	-
SO ₂	ppb	0.7	90%	1.1	Oct-08	48	0	1.9	Oct-08 06:00	172	0
H ₂ S	ppb	0.5	90%	0.7	Oct-10	3.6	0	1.1	Oct-10 09:00	11	0
O ₃	ppb	25.4	94%	31.4	Oct-08	-	-	44.0	Oct-04 15:00	82	0
PM _{2.5}	µg/m ³	5.1	99%	13.1	Oct-10	28	0	45.2	Oct-07 19:00	-	-

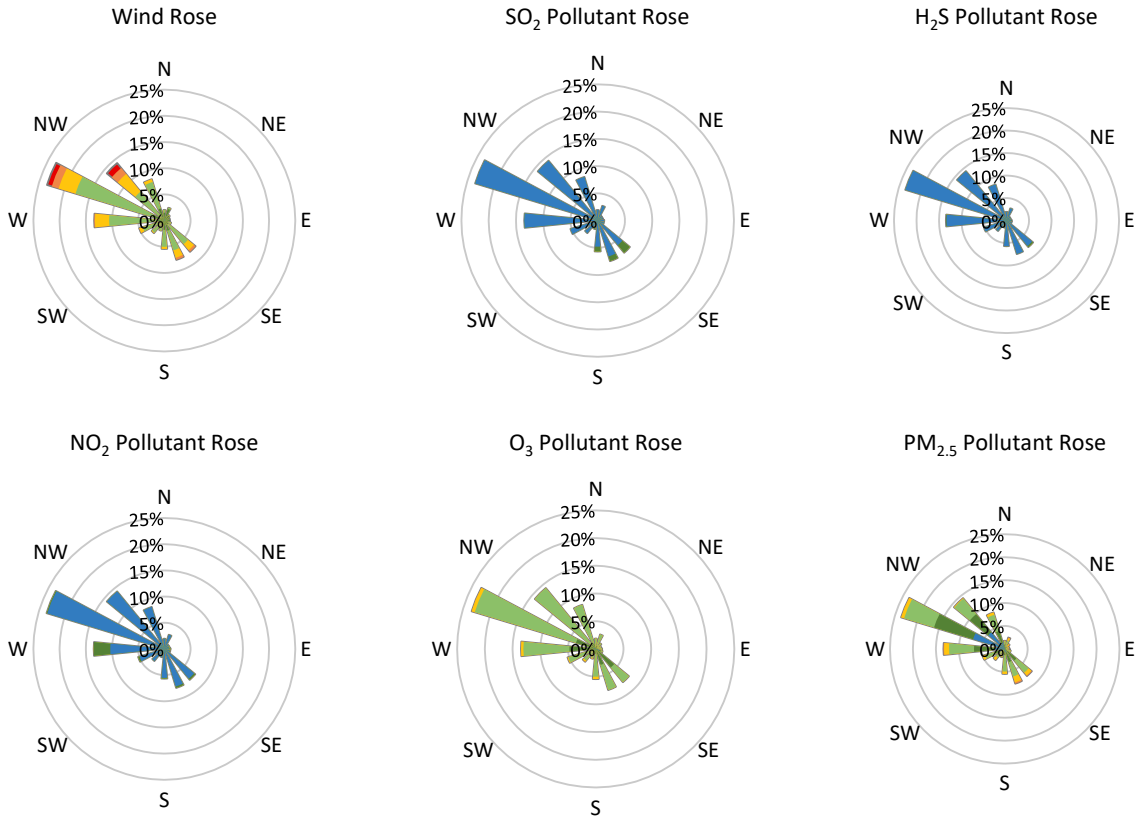
SAAQS: Saskatchewan Ambient Air Quality Standards



* colored lines indicate 1-hr concentration data for all parameters; solid black lines indicate 24-hr concentrations for PM_{2.5}, NO₂, SO₂, and H₂S



GPAZ Pense Station - October 2020 Summary Report



Parameters	Unit	Color Code for Wind Speed and Pollution Concentration Class					
		0.3 ≤ WS < 1.4	1.4 ≤ WS < 3.1	3.1 ≤ WS < 7.8	7.8 ≤ WS < 10.8	10.8 ≤ WS < 13.6	WS ≥ 13.6
SO ₂	ppb	0 ≤ C < 1	1 ≤ C < 5	5 ≤ C < 10	10 ≤ C < 57	57 ≤ C < 172	C ≥ 172
NO ₂	ppb	0 ≤ C < 5	5 ≤ C < 15	15 ≤ C < 30	30 ≤ C < 100	100 ≤ C < 212	C ≥ 212
H ₂ S	ppb	0 ≤ C < 1	1 ≤ C < 3.6	3.6 ≤ C < 5	5 ≤ C < 8	8 ≤ C < 10.8	C ≥ 10.8
O ₃	ppb	0 ≤ C < 10	10 ≤ C < 20	20 ≤ C < 40	40 ≤ C < 60	60 ≤ C < 82	C ≥ 82
PM _{2.5}	μg/m ³	0 ≤ C < 2	2 ≤ C < 4	4 ≤ C < 10	10 ≤ C < 20	20 ≤ C < 30	C ≥ 30

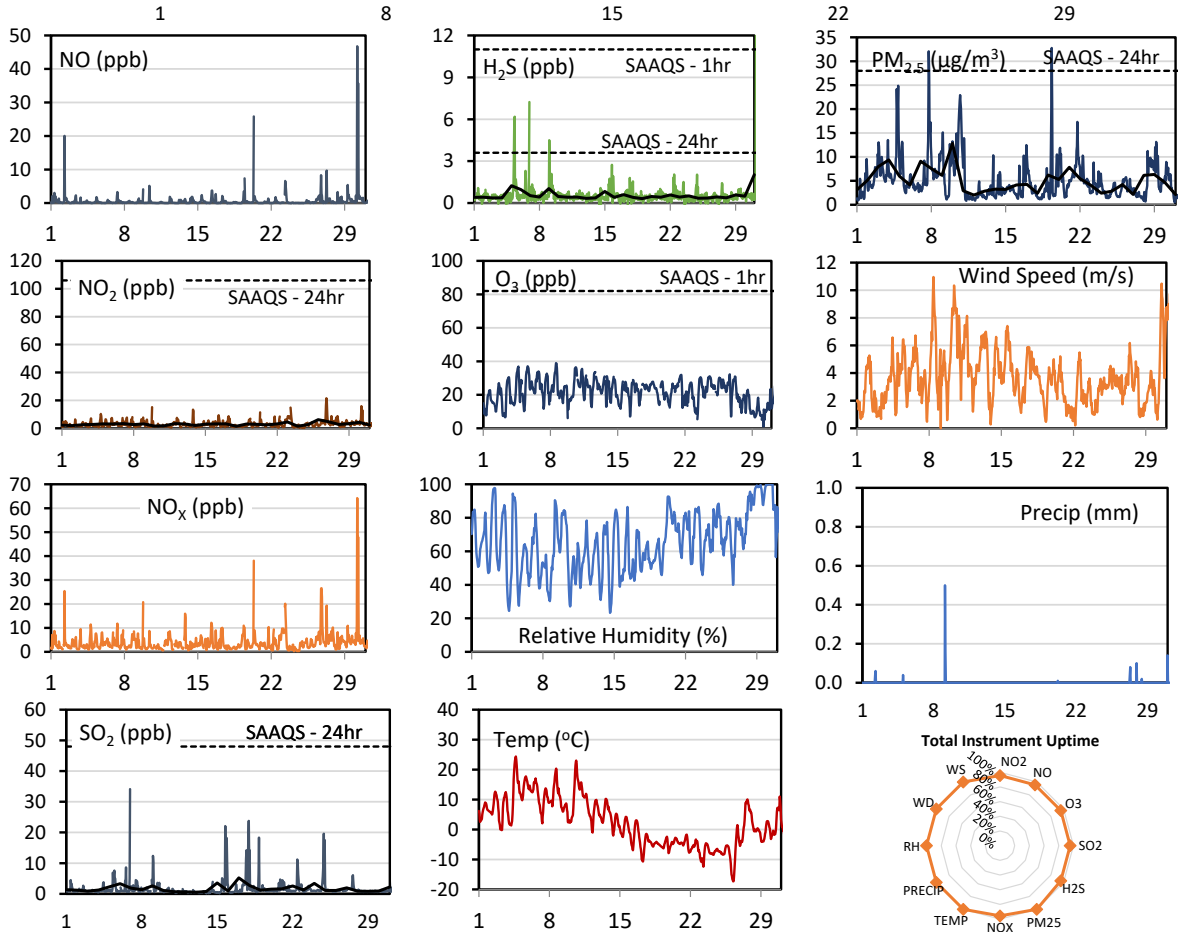
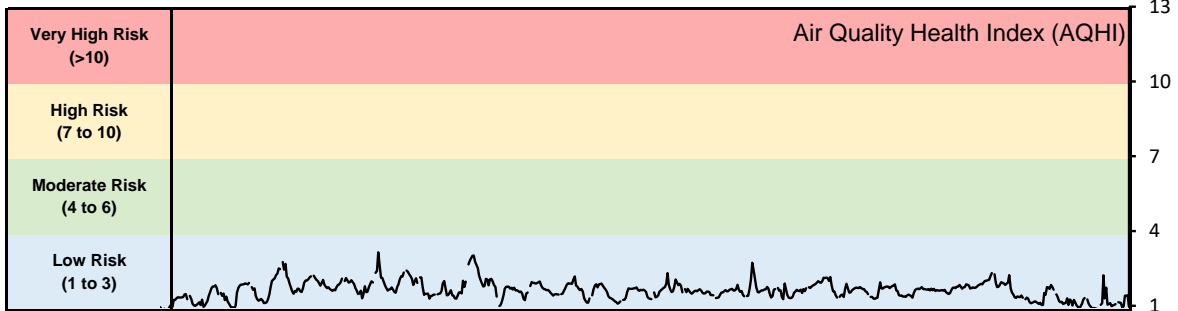
Monthly Update

- Achieved at least 90% of scheduled uptime for all parameters
- Downtime of <10% due to routine daily internal zeroes and spans

GPAZ Regina Station - October 2020 Summary Report

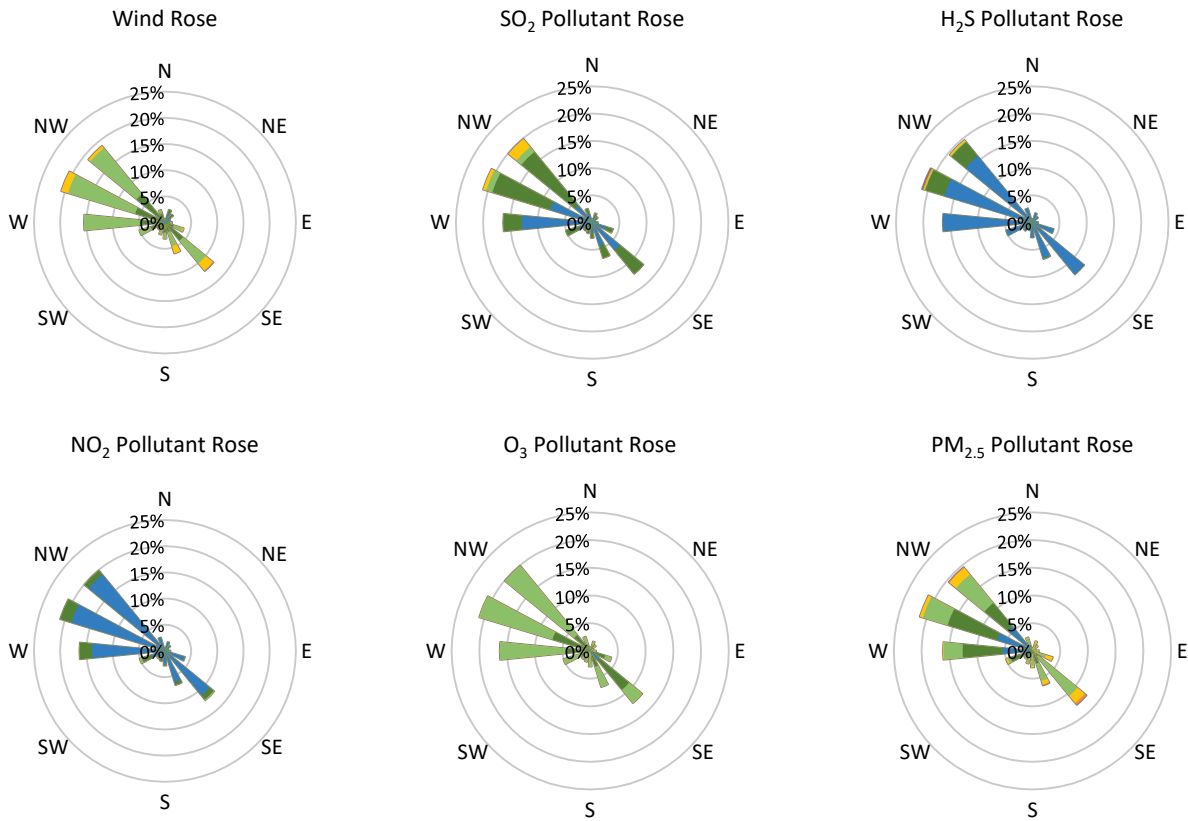
Pollutants		Month Records		24-Hour Records				1-Hour Records			
Name	Conc. Unit	Avg. Conc.	Total Uptime	Maximum		SAAQS Standard	Exceed Days	Maximum		SAAQS Standard	Exceed Hours
				Conc.	Time			Conc.	Time		
NO	ppb	0.6	96%	4.7	Oct-30	-	-	46.8	Oct-30 05:00	-	-
NO ₂	ppb	2.9	96%	6.2	Oct-26	106	0	21.5	Oct-26 19:00	159	0
NO _x	ppb	3.9	96%	9.4	Oct-30	-	-	64.2	Oct-30 05:00	-	-
SO ₂	ppb	1.7	96%	5.2	Oct-17	48	0	34.1	Oct-06 22:00	172	0
H ₂ S	ppb	0.6	96%	2.0	Oct-31	3.6	0	19.5	Oct-31 05:00	11	1
O ₃	ppb	21.6	96%	27.1	Oct-06	-	-	38.9	Oct-08 14:00	82	0
PM _{2.5}	µg/m ³	5.0	100%	12.8	Oct-10	28	0	32.8	Oct-19 08:00	-	-

SAAQS: Saskatchewan Ambient Air Quality Standards



* colored lines indicate 1-hr concentration data for all parameters; solid black lines indicate 24-hr concentrations for PM_{2.5}, NO₂, SO₂, and H₂S

GPAZ Regina Station - October 2020 Summary Report



Parameters	Unit	Color Code for Wind Speed and Pollution Concentration Class						
Wind Speed	m/s	0.3 ≤ WS < 1.4	1.4 ≤ WS < 3.1	3.1 ≤ WS < 7.8	7.8 ≤ WS < 10.8	10.8 ≤ WS < 13.6	WS ≥ 13.6	
SO ₂	ppb	0 ≤ C < 1	1 ≤ C < 5	5 ≤ C < 10	10 ≤ C < 57	57 ≤ C < 172	C ≥ 172	
NO ₂	ppb	0 ≤ C < 5	5 ≤ C < 15	15 ≤ C < 30	30 ≤ C < 100	100 ≤ C < 212	C ≥ 212	
H ₂ S	ppb	0 ≤ C < 1	1 ≤ C < 3.6	3.6 ≤ C < 5	5 ≤ C < 8	8 ≤ C < 10.8	C ≥ 10.8	
O ₃	ppb	0 ≤ C < 10	10 ≤ C < 20	20 ≤ C < 40	40 ≤ C < 60	60 ≤ C < 82	C ≥ 82	
PM _{2.5}	µg/m ³	0 ≤ C < 2	2 ≤ C < 4	4 ≤ C < 10	10 ≤ C < 20	20 ≤ C < 30	C ≥ 30	

Monthly Update

- Achieved at least 95% of scheduled uptime for all parameters
- Downtime of <5% due to routine daily internal zeroes and spans

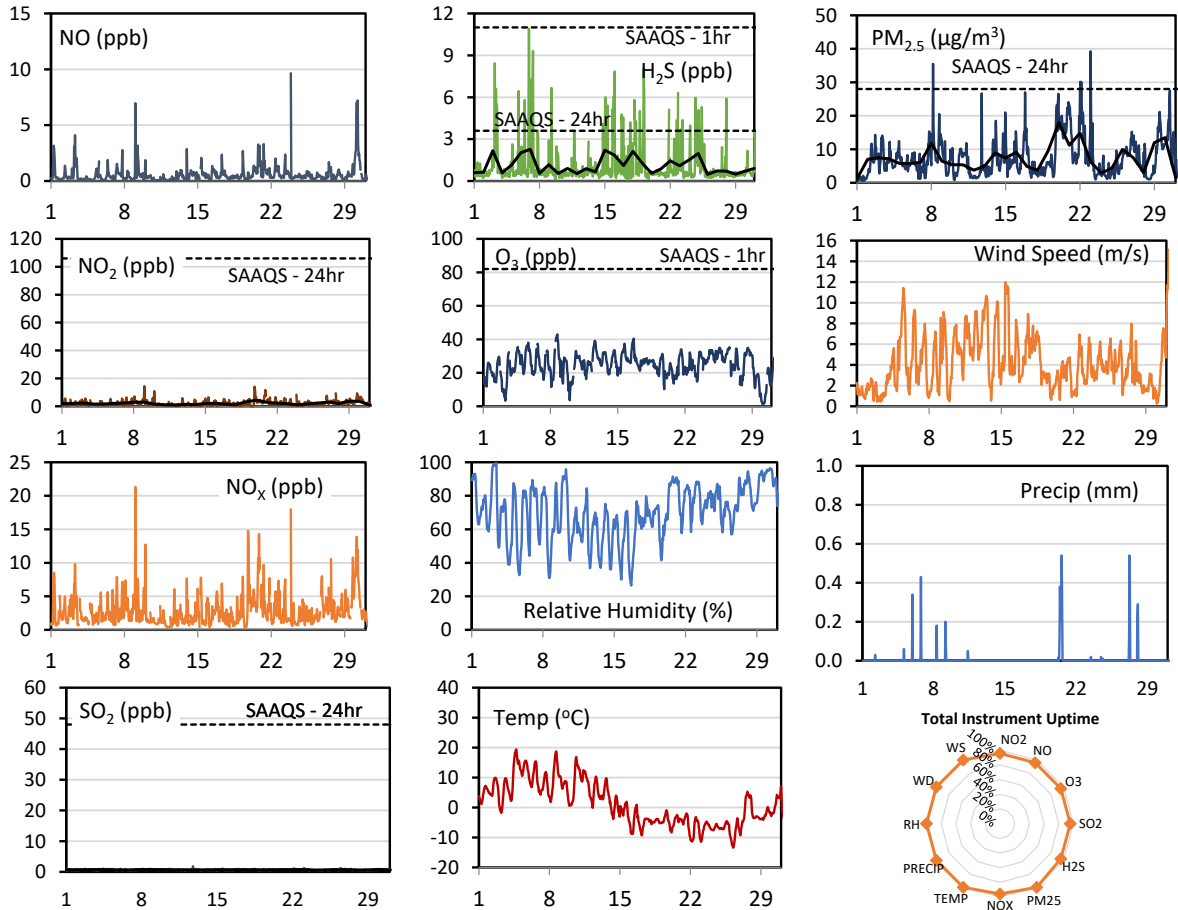
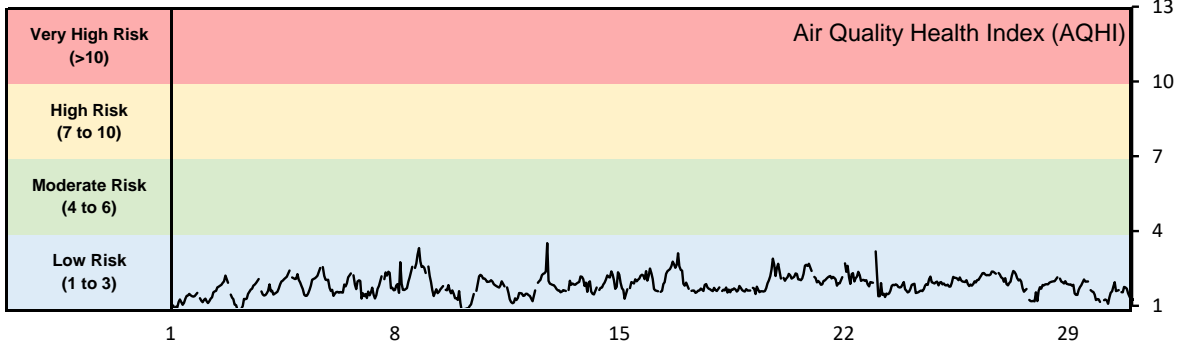
Exceedance Summary (1- Hour Average - Exceedances in Bold)

Exceedance Time	AQHI	NO ₂	NO	SO ₂	O ₃	NO _x	H ₂ S	PM _{2.5}	Temp	WD	WS
	-	ppb	ppb	ppb	ppb	ppb	ppb	µg/m ³	°C	deg	m/s
Oct-31 05:00	1.2	3.3	0.4	2.0	16.2	4.1	19.5	2.0	-0.5	301.6	9.0

GPAZ Yorkton Station - October 2020 Summary Report

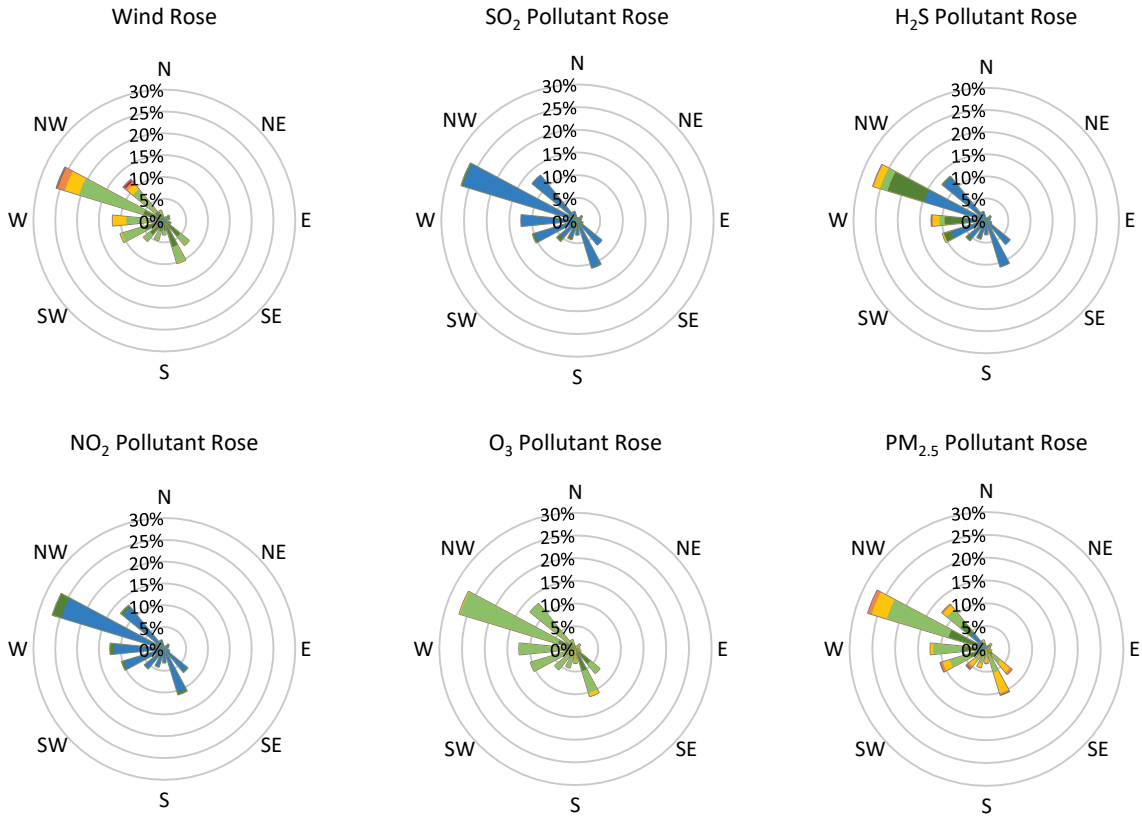
Pollutants		Month Records		24-Hour Records				1-Hour Records			
Name	Conc. Unit	Avg. Conc.	Total Uptime	Maximum		SAAQS Standard	Exceed Days	Maximum		SAAQS Standard	Exceed Hours
				Conc.	Time			Conc.	Time		
NO	ppb	0.6	96%	2.1	Oct-30	-	-	9.7	Oct-23 21:00	-	-
NO ₂	ppb	2.1	96%	4.4	Oct-20	106	0	14.5	Oct-09 01:00	159	0
NO _x	ppb	2.8	96%	5.7	Oct-30	-	-	21.3	Oct-09 01:00	-	-
SO ₂	ppb	0.7	96%	0.8	Oct-30	48	0	1.8	Oct-12 18:00	172	0
H ₂ S	ppb	1.1	96%	2.3	Oct-07	3.6	0	10.9	Oct-06 21:00	11	0
O ₃	ppb	24.7	96%	30.8	Oct-16	-	-	43.0	Oct-08 17:00	82	0
PM _{2.5}	µg/m ³	7.3	100%	18.0	Oct-20	28	0	39.3	Oct-23 00:00	-	-

SAAQS: Saskatchewan Ambient Air Quality Standards



* colored lines indicate 1-hr concentration data for all parameters; solid black lines indicate 24-hr concentrations for PM_{2.5}, NO₂, SO₂, and H₂S

GPAZ Yorkton Station - October 2020 Summary Report



Parameters	Unit	Color Code for Wind Speed and Pollution Concentration Class					
		0.3 ≤ WS < 1.4	1.4 ≤ WS < 3.1	3.1 ≤ WS < 7.8	7.8 ≤ WS < 10.8	10.8 ≤ WS < 13.6	WS ≥ 13.6
SO ₂	ppb	0 ≤ C < 1	1 ≤ C < 5	5 ≤ C < 10	10 ≤ C < 57	57 ≤ C < 172	C ≥ 172
NO ₂	ppb	0 ≤ C < 5	5 ≤ C < 15	15 ≤ C < 30	30 ≤ C < 100	100 ≤ C < 212	C ≥ 212
H ₂ S	ppb	0 ≤ C < 1	1 ≤ C < 3.6	3.6 ≤ C < 5	5 ≤ C < 8	8 ≤ C < 10.8	C ≥ 10.8
O ₃	ppb	0 ≤ C < 10	10 ≤ C < 20	20 ≤ C < 40	40 ≤ C < 60	60 ≤ C < 82	C ≥ 82
PM _{2.5}	µg/m ³	0 ≤ C < 2	2 ≤ C < 4	4 ≤ C < 10	10 ≤ C < 20	20 ≤ C < 30	C ≥ 30

Monthly Update

- Achieved at least 95% of scheduled uptime for all parameters
- Downtime of <5% due to routine daily internal zeroes and spans