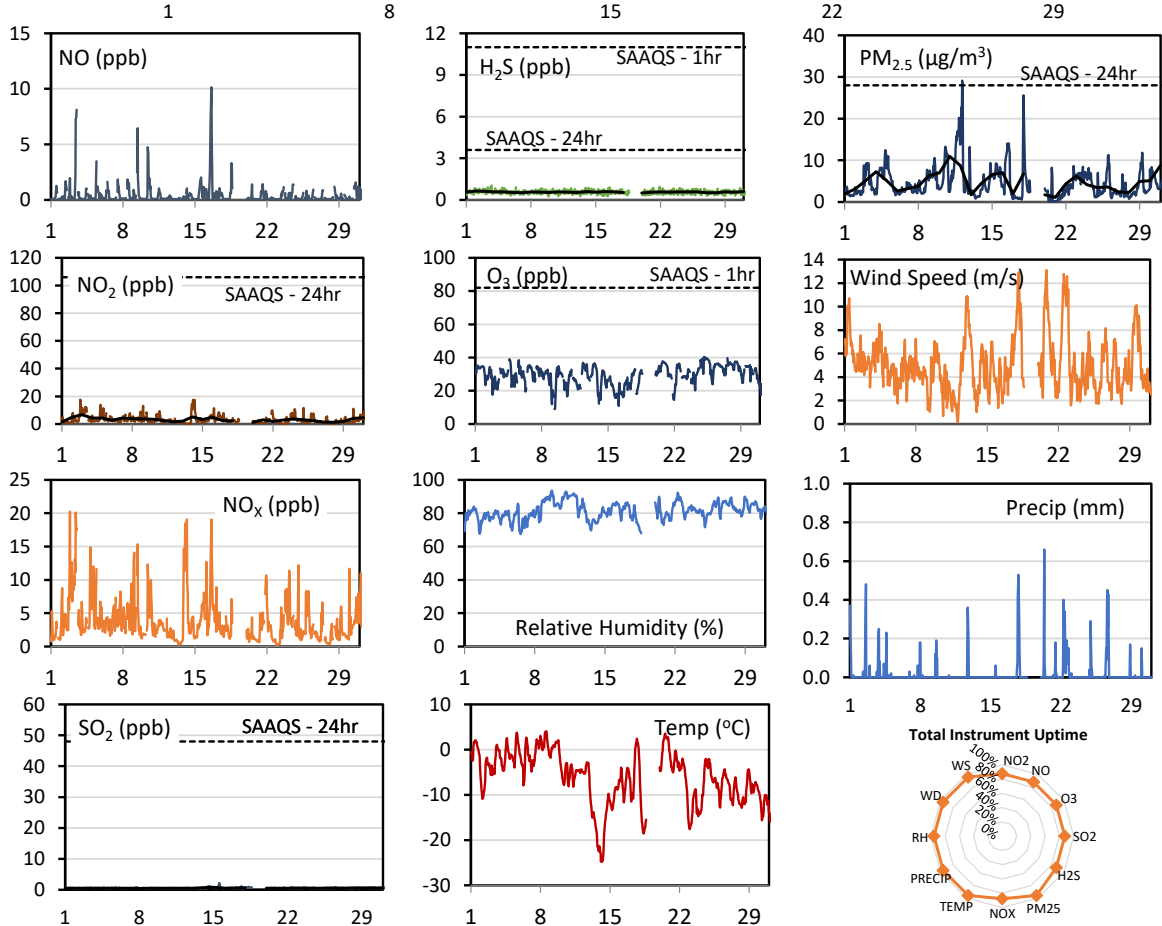
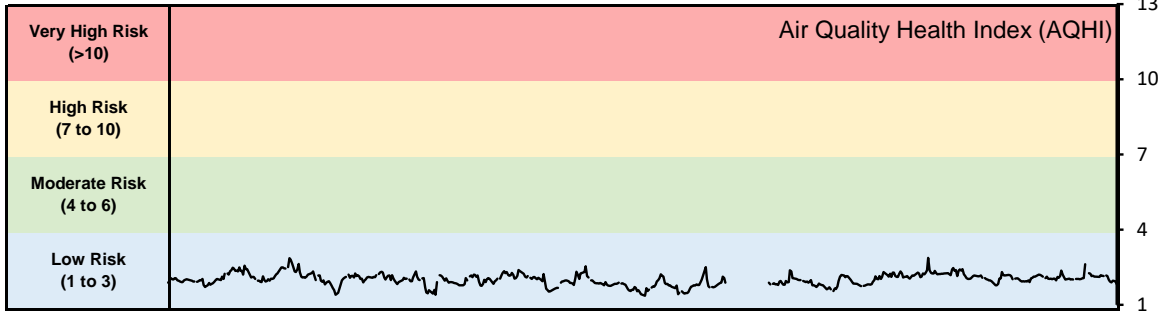


GPAZ Pense Station - December 2020 Summary Report

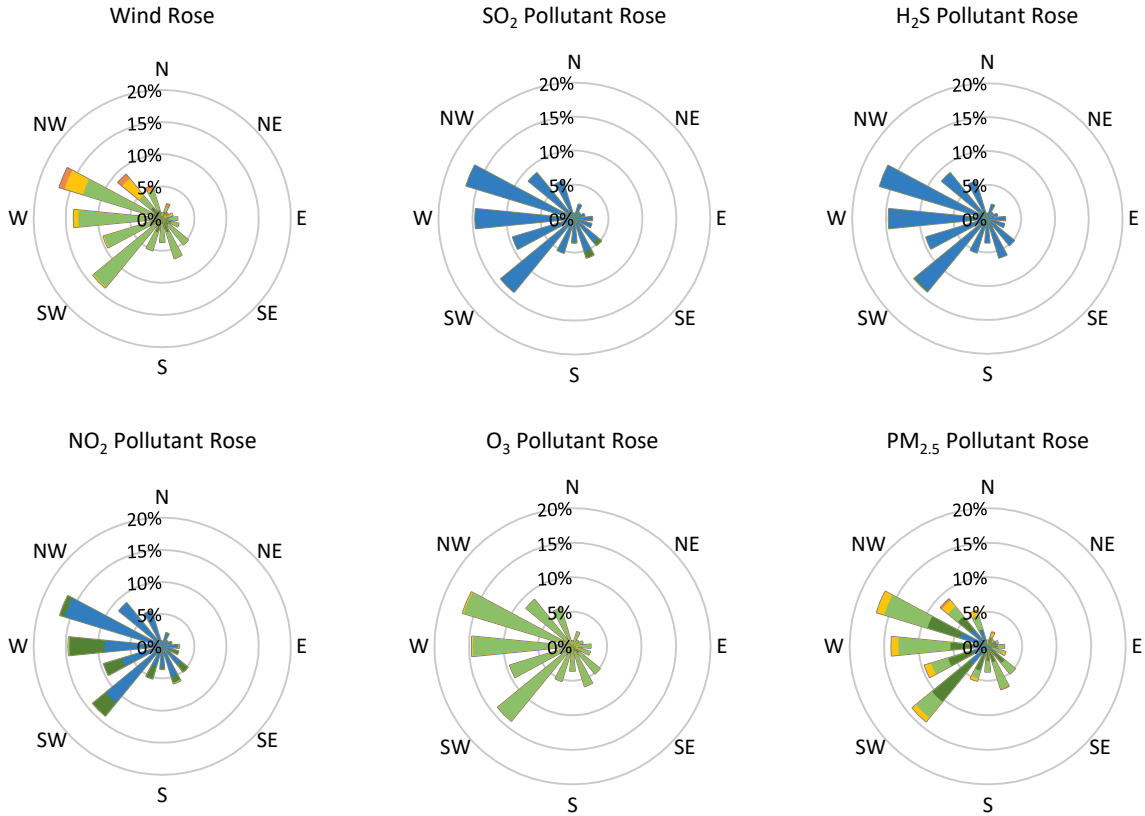
Pollutants		Month Records		24-Hour Records				1-Hour Records			
Name	Conc. Unit	Avg. Conc.	Total Uptime	Maximum		SAAQS Standard	Exceed Days	Maximum		SAAQS Standard	Exceed Hours
				Conc.	Time			Conc.	Time		
NO	ppb	0.4	88%	2.0	Dec-16	-	-	10.1	Dec-16 14:00	-	-
NO ₂	ppb	3.2	88%	6.7	Dec-03	106	0	17.6	Dec-02 20:00	159	0
NO _x	ppb	3.8	88%	8.4	Dec-03	-	-	20.2	Dec-02 20:00	-	-
SO ₂	ppb	0.5	88%	0.8	Dec-15	48	0	2.2	Dec-15 13:00	172	0
H ₂ S	ppb	0.6	88%	0.6	Dec-02	3.6	0	1.0	Dec-03 17:00	11	0
O ₃	ppb	29.3	88%	36.2	Dec-25	-	-	40.4	Dec-25 03:00	82	0
PM _{2.5}	µg/m ³	4.7	96%	10.9	Dec-11	28	0	29.1	Dec-12 04:00	-	-

SAAQS: Saskatchewan Ambient Air Quality Standards



* colored lines indicate 1-hr concentration data for all parameters; solid black lines indicate 24-hr concentrations for PM_{2.5}, NO₂, SO₂, and H₂S

GPAZ Pense Station - December 2020 Summary Report



Parameters	Unit	Color Code for Wind Speed and Pollution Concentration Class					
		0.3 ≤ WS < 1.4	1.4 ≤ WS < 3.1	3.1 ≤ WS < 7.8	7.8 ≤ WS < 10.8	10.8 ≤ WS < 13.6	WS ≥ 13.6
SO ₂	ppb	0 ≤ C < 1	1 ≤ C < 5	5 ≤ C < 10	10 ≤ C < 57	57 ≤ C < 172	C ≥ 172
NO ₂	ppb	0 ≤ C < 5	5 ≤ C < 15	15 ≤ C < 30	30 ≤ C < 100	100 ≤ C < 212	C ≥ 212
H ₂ S	ppb	0 ≤ C < 1	1 ≤ C < 3.6	3.6 ≤ C < 5	5 ≤ C < 8	8 ≤ C < 10.8	C ≥ 10.8
O ₃	ppb	0 ≤ C < 10	10 ≤ C < 20	20 ≤ C < 40	40 ≤ C < 60	60 ≤ C < 82	C ≥ 82
PM _{2.5}	μg/m ³	0 ≤ C < 2	2 ≤ C < 4	4 ≤ C < 10	10 ≤ C < 20	20 ≤ C < 30	C ≥ 30

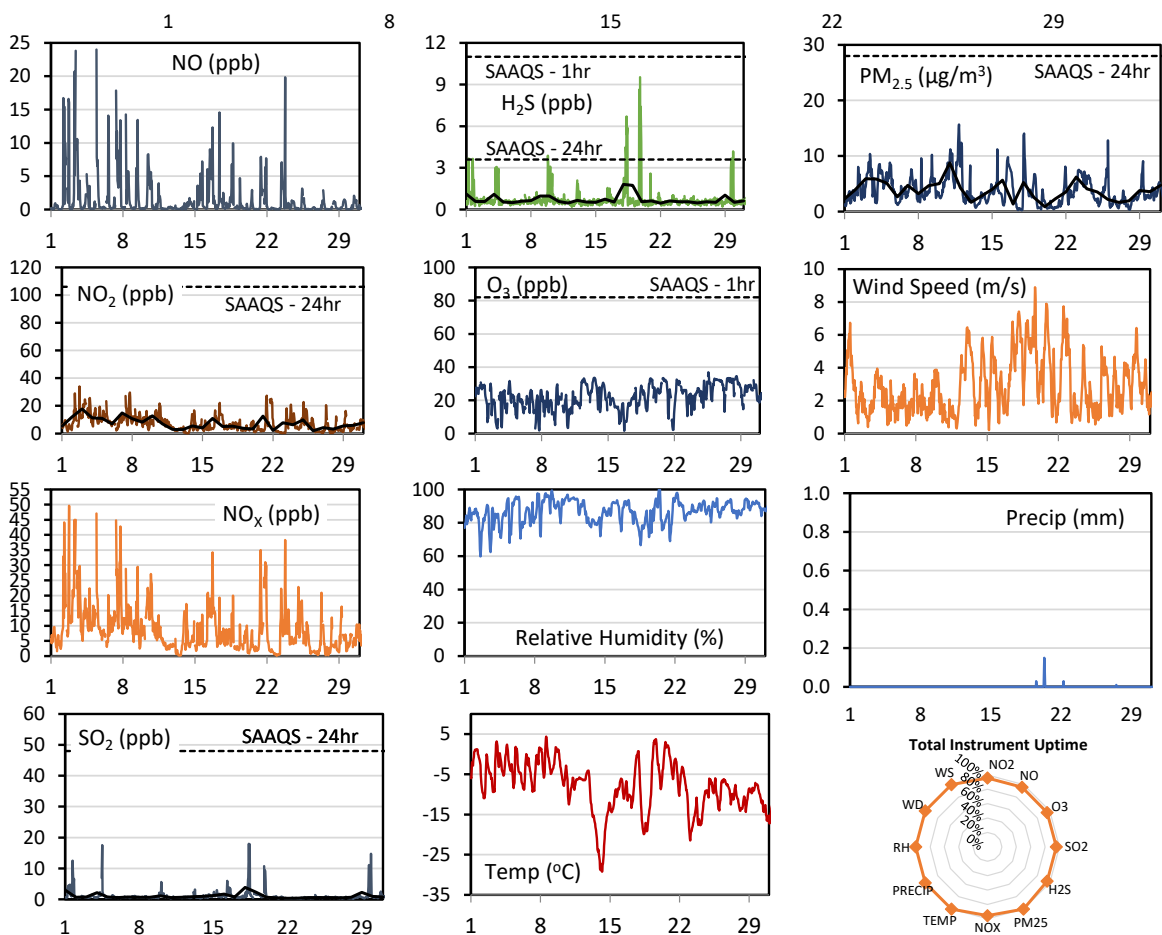
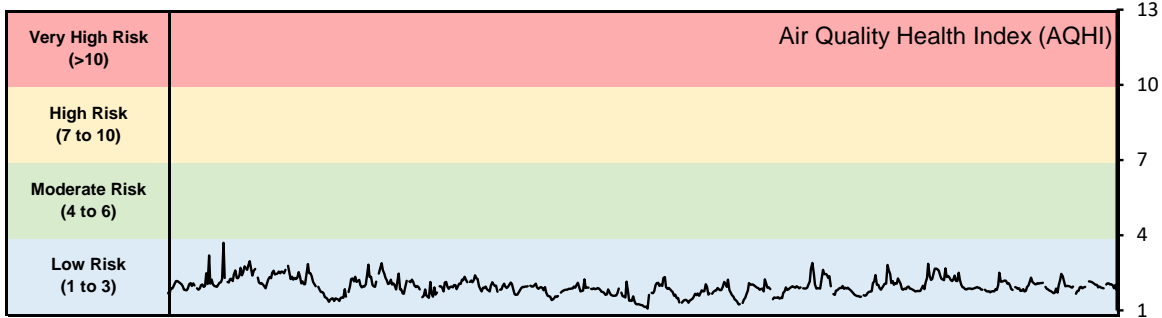
Monthly Update

- Achieved at least 87.6% of scheduled uptime for all parameters
- Downtime of <13% due to routine daily internal zeroes and spans, and a power outage on Dec 18 - 20, 2021

GPAZ Regina Station - December 2020 Summary Report

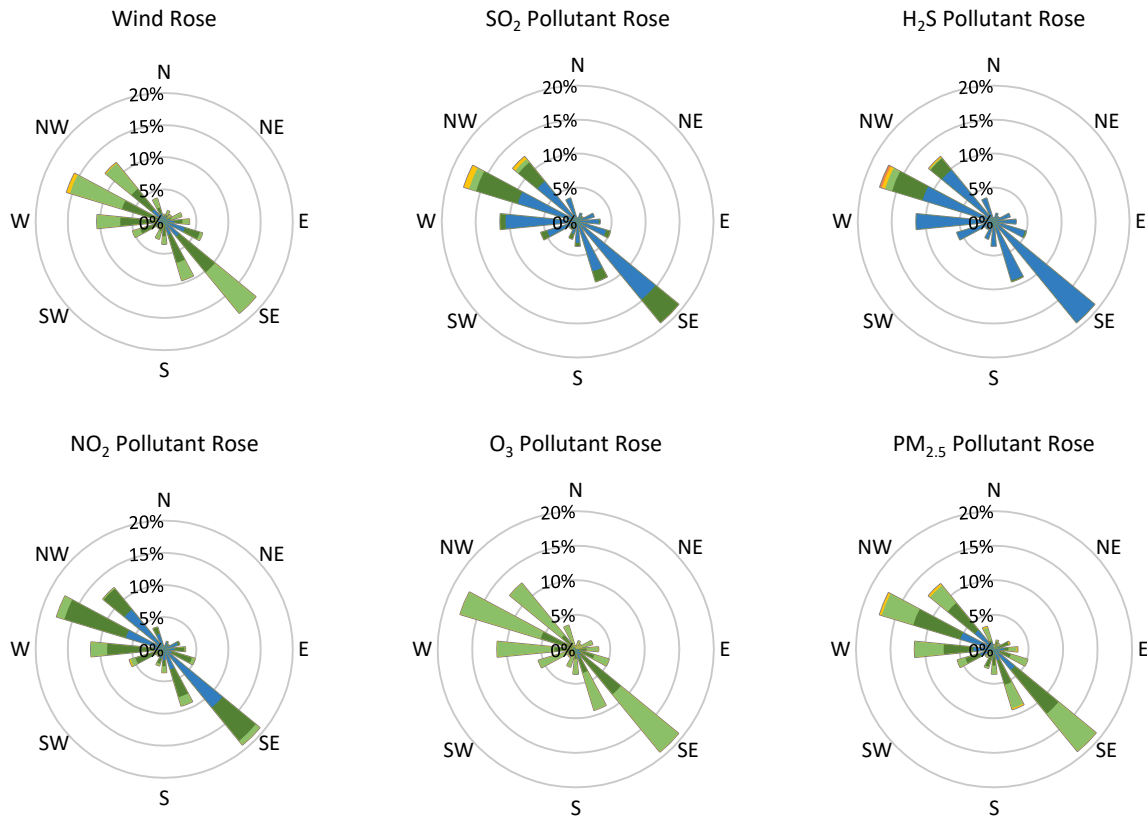
Pollutants		Month Records		24-Hour Records				1-Hour Records			
Name	Conc. Unit	Avg. Conc.	Total Uptime	Maximum		SAAQS Standard	Exceed Days	Maximum		SAAQS Standard	Exceed Hours
				Conc.	Time			Conc.	Time		
NO	ppb	1.5	96%	5.2	Dec-03	-	-	24.0	Dec-05 10:00	-	-
NO ₂	ppb	7.4	96%	17.8	Dec-03	106	0	34.0	Dec-02 18:00	159	0
NO _x	ppb	8.7	96%	22.7	Dec-03	-	-	49.6	Dec-02 18:00	-	-
SO ₂	ppb	1.1	96%	3.9	Dec-18	48	0	18.0	Dec-18 08:00	172	0
H ₂ S	ppb	0.7	96%	1.8	Dec-18	3.6	0	9.5	Dec-19 19:00	11	0
O ₃	ppb	22.2	96%	31.3	Dec-26	-	-	36.9	Dec-25 14:00	82	0
PM _{2.5}	µg/m ³	3.8	100%	8.8	Dec-11	28	0	15.7	Dec-11 21:00	-	-

SAAQS: Saskatchewan Ambient Air Quality Standards



* colored lines indicate 1-hr concentration data for all parameters; solid black lines indicate 24-hr concentrations for PM_{2.5}, NO₂, SO₂, and H₂S

GPAZ Regina Station - December 2020 Summary Report



Parameters	Unit	Color Code for Wind Speed and Pollution Concentration Class						
		0.3 ≤ WS < 1.4	1.4 ≤ WS < 3.1	3.1 ≤ WS < 7.8	7.8 ≤ WS < 10.8	10.8 ≤ WS < 13.6	WS ≥ 13.6	
SO ₂	ppb	0 ≤ C < 1	1 ≤ C < 5	5 ≤ C < 10	10 ≤ C < 57	57 ≤ C < 172	C ≥ 172	
NO ₂	ppb	0 ≤ C < 5	5 ≤ C < 15	15 ≤ C < 30	30 ≤ C < 100	100 ≤ C < 212	C ≥ 212	
H ₂ S	ppb	0 ≤ C < 1	1 ≤ C < 3.6	3.6 ≤ C < 5	5 ≤ C < 8	8 ≤ C < 10.8	C ≥ 10.8	
O ₃	ppb	0 ≤ C < 10	10 ≤ C < 20	20 ≤ C < 40	40 ≤ C < 60	60 ≤ C < 82	C ≥ 82	
PM _{2.5}	µg/m ³	0 ≤ C < 2	2 ≤ C < 4	4 ≤ C < 10	10 ≤ C < 20	20 ≤ C < 30	C ≥ 30	

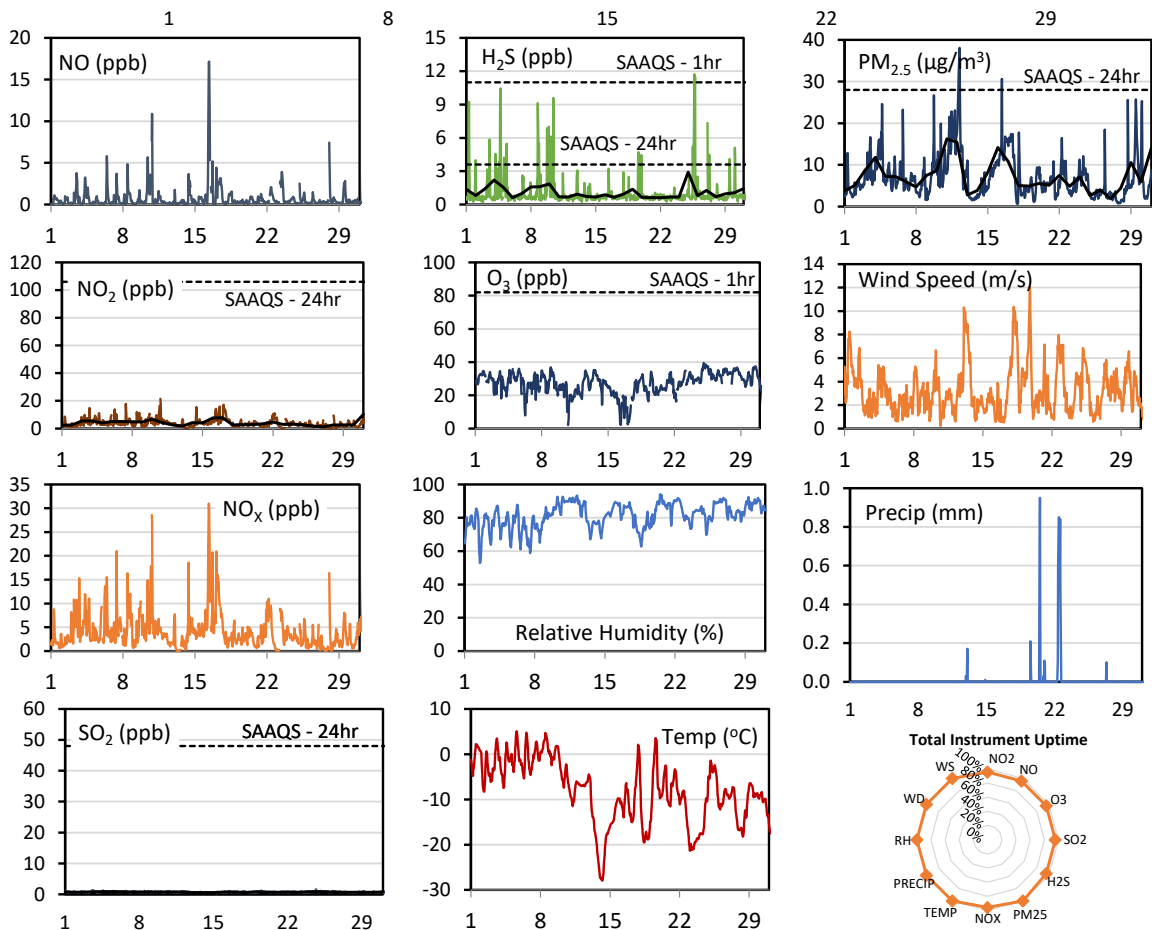
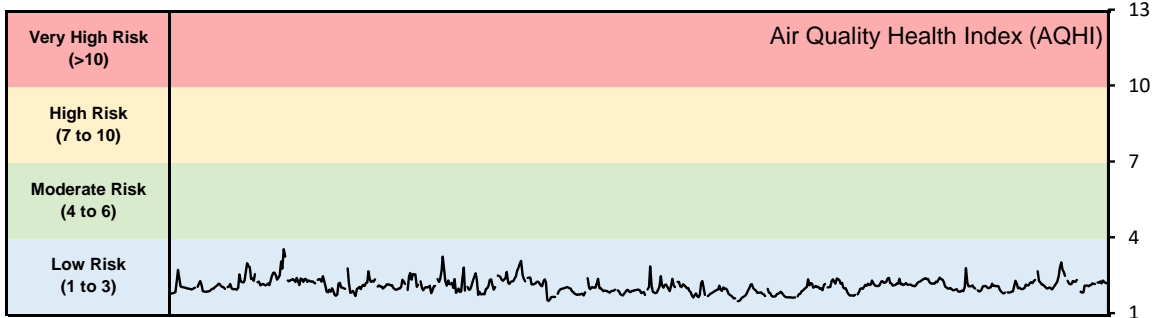
Monthly Update

- Achieved at least 95% of scheduled uptime for all parameters
- Downtime of <5% due to routine daily internal zeroes and spans

GPAZ Yorkton Station - December 2020 Summary Report

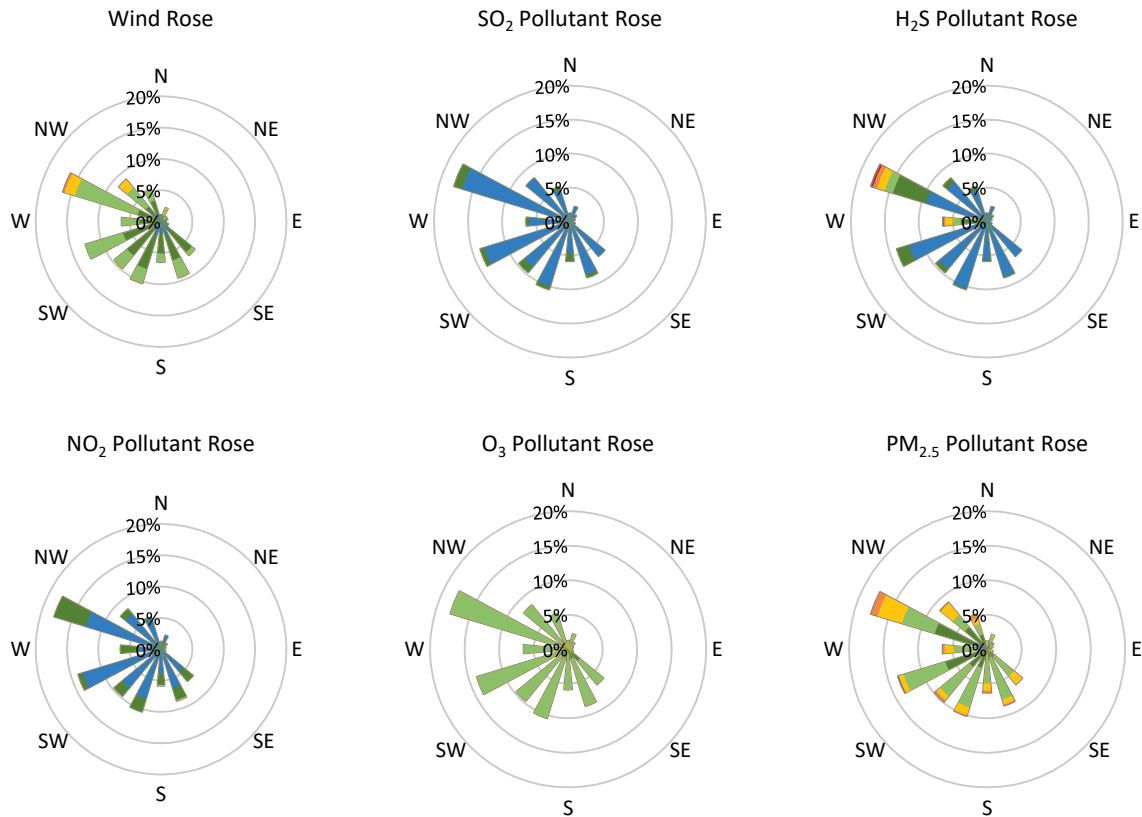
Pollutants		Month Records		24-Hour Records				1-Hour Records			
Name	Conc. Unit	Avg. Conc.	Total Uptime	Maximum		SAAQS Standard	Exceed Days	Maximum		SAAQS Standard	Exceed Hours
				Conc.	Time			Conc.	Time		
NO	ppb	0.8	96%	3.4	Dec-16	-	-	17.2	Dec-16 09:00	-	-
NO ₂	ppb	4.0	96%	10.2	Dec-31	106	0	21.5	Dec-10 19:00	159	0
NO _x	ppb	4.3	96%	12.6	Dec-31	-	-	31.0	Dec-16 08:00	-	-
SO ₂	ppb	0.7	96%	0.9	Dec-05	48	0	1.6	Dec-24 16:00	172	0
H ₂ S	ppb	1.1	96%	2.9	Dec-25	3.6	0	11.7	Dec-25 16:00	11	2
O ₃	ppb	27.0	96%	35.8	Dec-25	-	-	39.5	Dec-25 02:00	82	0
PM _{2.5}	µg/m ³	7.3	100%	16.2	Dec-11	28	0	38.1	Dec-12 06:00	-	-

SAAQS: Saskatchewan Ambient Air Quality Standards



* colored lines indicate 1-hr concentration data for all parameters; solid black lines indicate 24-hr concentrations for PM_{2.5}, NO₂, SO₂, and H₂S

GPAZ Yorkton Station - December 2020 Summary Report



Parameters	Unit	Color Code for Wind Speed and Pollution Concentration Class					
Wind Speed	m/s	0.3 ≤ WS < 1.4	1.4 ≤ WS < 3.1	3.1 ≤ WS < 7.8	7.8 ≤ WS < 10.8	10.8 ≤ WS < 13.6	WS ≥ 13.6
SO ₂	ppb	0 ≤ C < 1	1 ≤ C < 5	5 ≤ C < 10	10 ≤ C < 57	57 ≤ C < 172	C ≥ 172
NO ₂	ppb	0 ≤ C < 5	5 ≤ C < 15	15 ≤ C < 30	30 ≤ C < 100	100 ≤ C < 212	C ≥ 212
H ₂ S	ppb	0 ≤ C < 1	1 ≤ C < 3.6	3.6 ≤ C < 5	5 ≤ C < 8	8 ≤ C < 10.8	C ≥ 10.8
O ₃	ppb	0 ≤ C < 10	10 ≤ C < 20	20 ≤ C < 40	40 ≤ C < 60	60 ≤ C < 82	C ≥ 82
PM _{2.5}	μg/m ³	0 ≤ C < 2	2 ≤ C < 4	4 ≤ C < 10	10 ≤ C < 20	20 ≤ C < 30	C ≥ 30

Monthly Update

- Achieved at least 95% of scheduled uptime for all parameters
- Downtime of <5% due to routine daily internal zeroes and spans

Exceedance Summary (1- Hour Average - Exceedances in Bold)

Exceedance Time	AQHI	NO ₂ ppb	NO ppb	SO ₂ ppb	O ₃ ppb	NO _x ppb	H ₂ S ppb	PM _{2.5} μg/m ³	Temp °C	WD deg	WS m/s
Dec-25 16:00	2.3	5.7	0.9	1.0	32.5	6.1	11.7	3.7	-3.8	286.2	4.5
Dec-25 18:00	2.2	3.3	0.3	0.8	34.4	3.1	11.5	3.4	-5.2	286.3	4.2