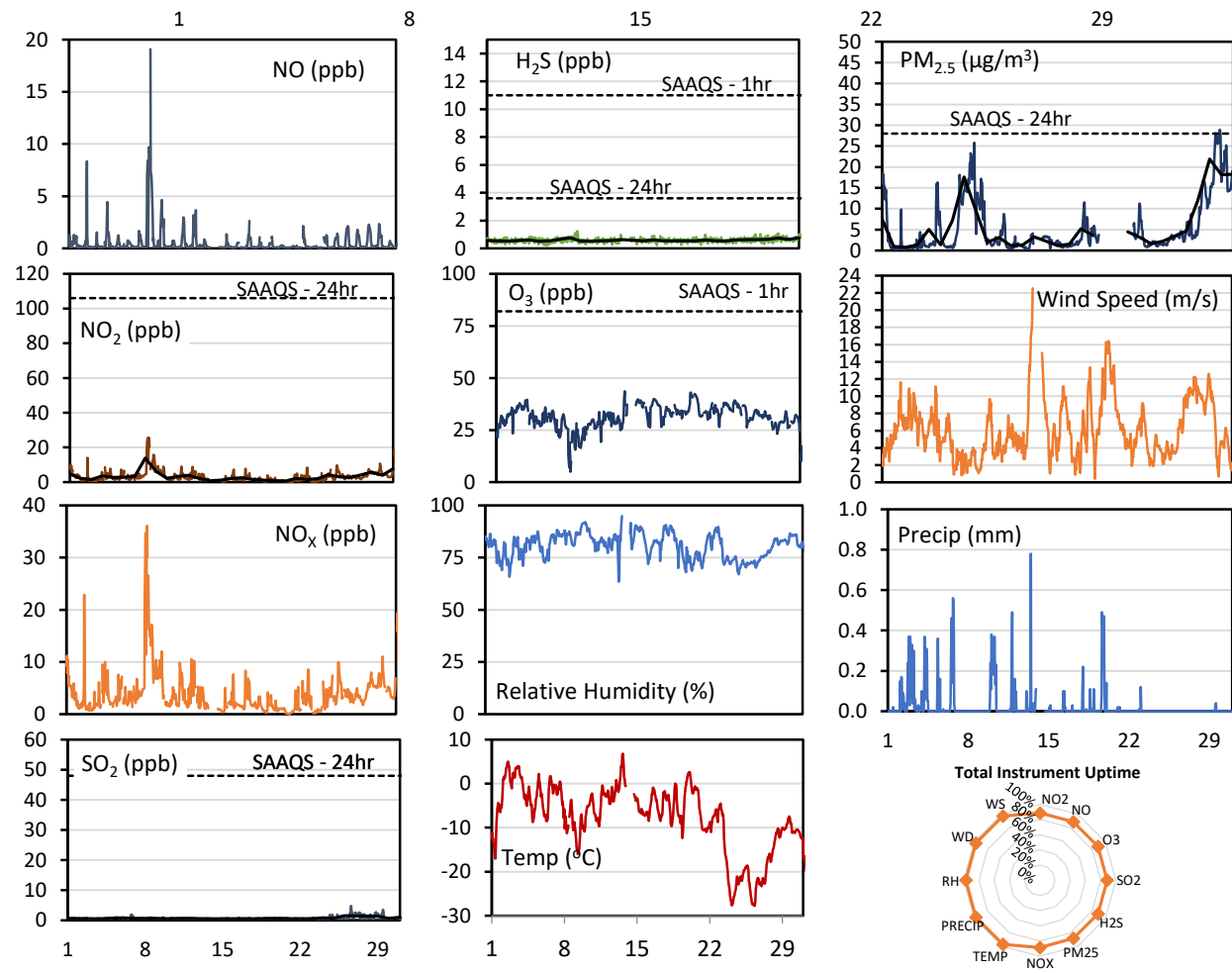
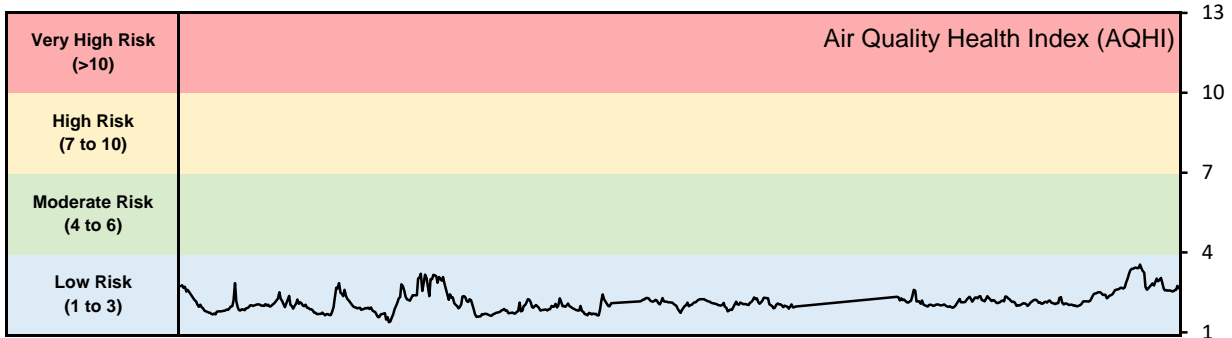


GPAZ Pense Station - January 2021 Summary Report

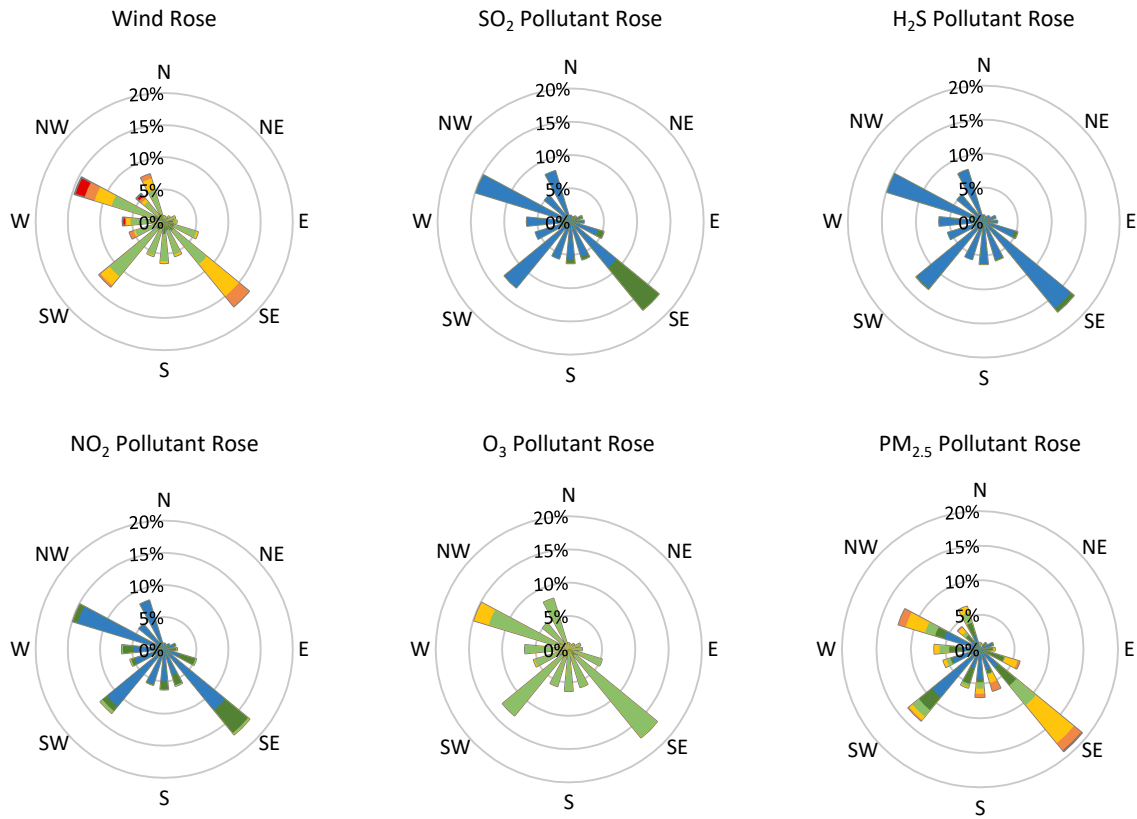
Pollutants		Month Records		24-Hour Records				1-Hour Records			
Name	Conc. Unit	Avg. Conc.	Total Uptime	Maximum		SAAQS Standard	Exceed Days	Maximum		SAAQS Standard	Exceed Hours
				Conc.	Time			Conc.	Time		
NO	ppb	0.6	89%	4.7	Jan-08	-	-	19.1	Jan-08 11:00	-	-
NO ₂	ppb	3.2	89%	13.9	Jan-08	106	0	25.6	Jan-08 08:00	159	0
NO _x	ppb	3.9	89%	19.0	Jan-08	-	-	36.1	Jan-08 08:00	-	-
SO ₂	ppb	0.7	89%	1.5	Jan-26	48	0	4.8	Jan-26 14:00	172	0
H ₂ S	ppb	0.6	89%	0.8	Jan-09	3.6	0	1.2	Jan-09 17:00	11	0
O ₃	ppb	31.2	89%	40.1	Jan-20	-	-	43.6	Jan-13 16:00	82	0
PM _{2.5}	µg/m ³	5.8	88%	21.9	Jan-29	28	0	42.0	Jan-31 08:00	-	-

SAAQS: Saskatchewan Ambient Air Quality Standards



* colored lines indicate 1-hr concentration data for all parameters; solid black lines indicate 24-hr concentrations for PM_{2.5}, NO₂, SO₂, and H₂S

GPAZ Pense Station - January 2021 Summary Report



Parameters	Unit	Color Code for Wind Speed and Pollution Concentration Class						
		0.3 ≤ WS < 1.4	1.4 ≤ WS < 3.1	3.1 ≤ WS < 7.8	7.8 ≤ WS < 10.8	10.8 ≤ WS < 13.6	13.6 ≤ WS < 17.2	WS ≥ 17.2
SO ₂	ppb	0 ≤ C < 1	1 ≤ C < 5	5 ≤ C < 10	10 ≤ C < 57	57 ≤ C < 172	C ≥ 172	
NO ₂	ppb	0 ≤ C < 5	5 ≤ C < 15	15 ≤ C < 30	30 ≤ C < 100	100 ≤ C < 212	C ≥ 212	
H ₂ S	ppb	0 ≤ C < 1	1 ≤ C < 3.6	3.6 ≤ C < 5	5 ≤ C < 8	8 ≤ C < 10.8	C ≥ 10.8	
O ₃	ppb	0 ≤ C < 10	10 ≤ C < 20	20 ≤ C < 40	40 ≤ C < 60	60 ≤ C < 82	C ≥ 82	
PM _{2.5}	μg/m ³	0 ≤ C < 2	2 ≤ C < 4	4 ≤ C < 10	10 ≤ C < 20	20 ≤ C < 30	C ≥ 30	

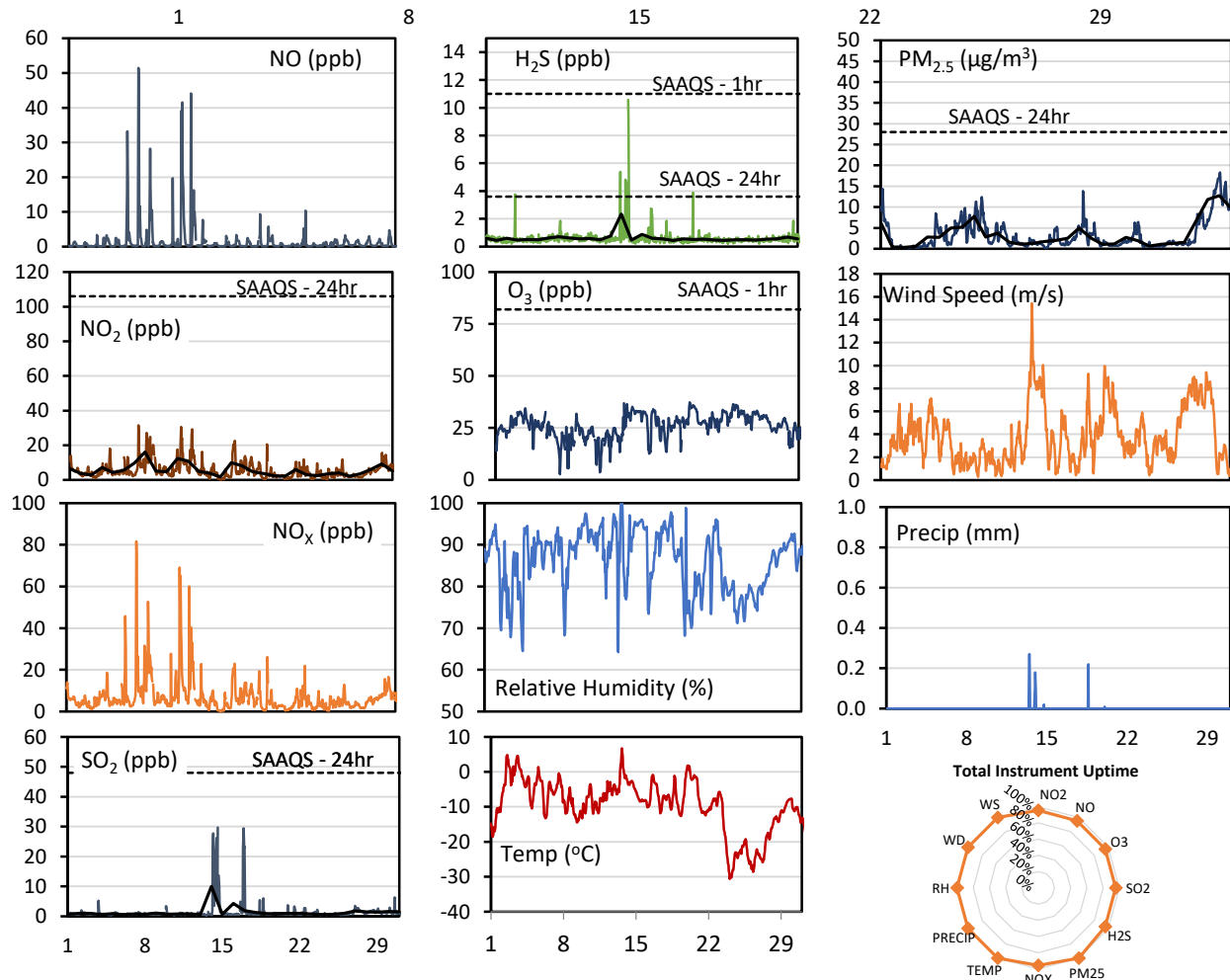
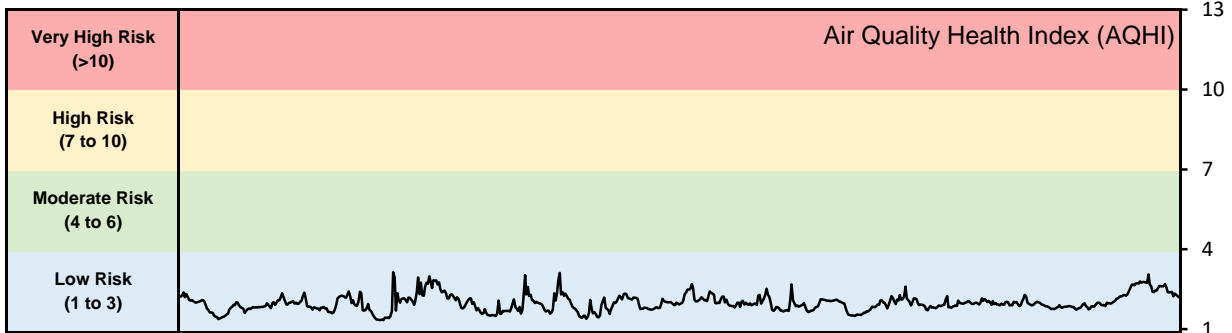
Monthly Update

- Achieved >88% of scheduled uptime for all parameters
- Downtime of <12% due to routine daily internal zeroes and spans, and power outage on Jan 13 - 14, 2021

GPAZ Regina Station - January 2021 Summary Report

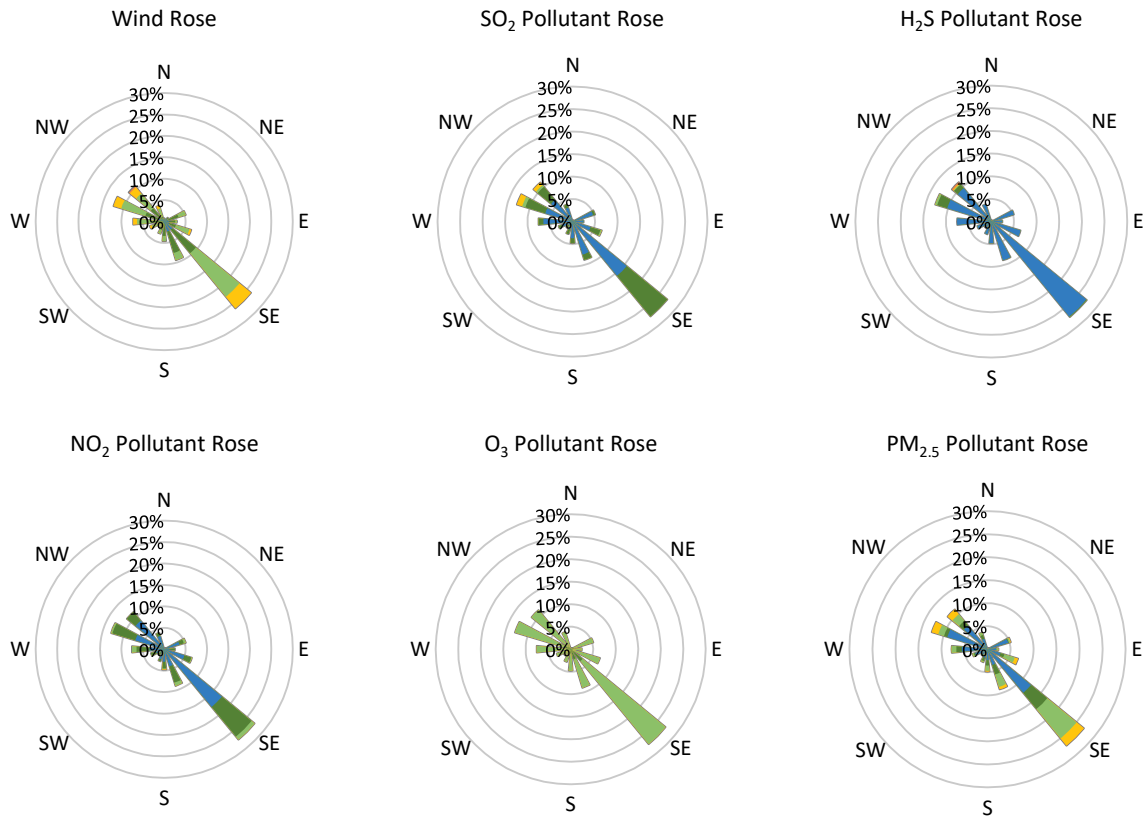
Pollutants		Month Records		24-Hour Records				1-Hour Records			
Name	Conc. Unit	Avg. Conc.	Total Uptime	Maximum		SAAQS Standard	Exceed Days	Maximum		SAAQS Standard	Exceed Hours
				Conc.	Time			Conc.	Time		
NO	ppb	1.5	96%	7.2	Jan-11	-	-	51.4	Jan-07 09:00	-	-
NO ₂	ppb	5.6	96%	16.1	Jan-08	106	0	31.5	Jan-07 09:00	159	0
NO _x	ppb	7.0	96%	20.6	Jan-08	-	-	81.7	Jan-07 09:00	-	-
SO ₂	ppb	1.4	96%	10.0	Jan-14	48	0	29.7	Jan-14 14:00	172	0
H ₂ S	ppb	0.6	96%	2.3	Jan-14	3.6	0	10.6	Jan-14 16:00	11	0
O ₃	ppb	26.0	96%	33.8	Jan-20	-	-	37.3	Jan-20 05:00	82	0
PM _{2.5}	µg/m ³	3.5	100%	12.7	Jan-30	28	0	18.3	Jan-30 01:00	-	-

SAAQS: Saskatchewan Ambient Air Quality Standards



* colored lines indicate 1-hr concentration data for all parameters; solid black lines indicate 24-hr concentrations for PM_{2.5}, NO₂, SO₂, and H₂S

GPAZ Regina Station - January 2021 Summary Report



Parameters	Unit	Color Code for Wind Speed and Pollution Concentration Class					
		0.3 ≤ WS < 1.4	1.4 ≤ WS < 3.1	3.1 ≤ WS < 7.8	7.8 ≤ WS < 10.8	10.8 ≤ WS < 13.6	WS ≥ 13.6
SO ₂	ppb	0 ≤ C < 1	1 ≤ C < 5	5 ≤ C < 10	10 ≤ C < 57	57 ≤ C < 172	C ≥ 172
NO ₂	ppb	0 ≤ C < 5	5 ≤ C < 15	15 ≤ C < 30	30 ≤ C < 100	100 ≤ C < 212	C ≥ 212
H ₂ S	ppb	0 ≤ C < 1	1 ≤ C < 3.6	3.6 ≤ C < 5	5 ≤ C < 8	8 ≤ C < 10.8	C ≥ 10.8
O ₃	ppb	0 ≤ C < 10	10 ≤ C < 20	20 ≤ C < 40	40 ≤ C < 60	60 ≤ C < 82	C ≥ 82
PM _{2.5}	μg/m ³	0 ≤ C < 2	2 ≤ C < 4	4 ≤ C < 10	10 ≤ C < 20	20 ≤ C < 30	C ≥ 30

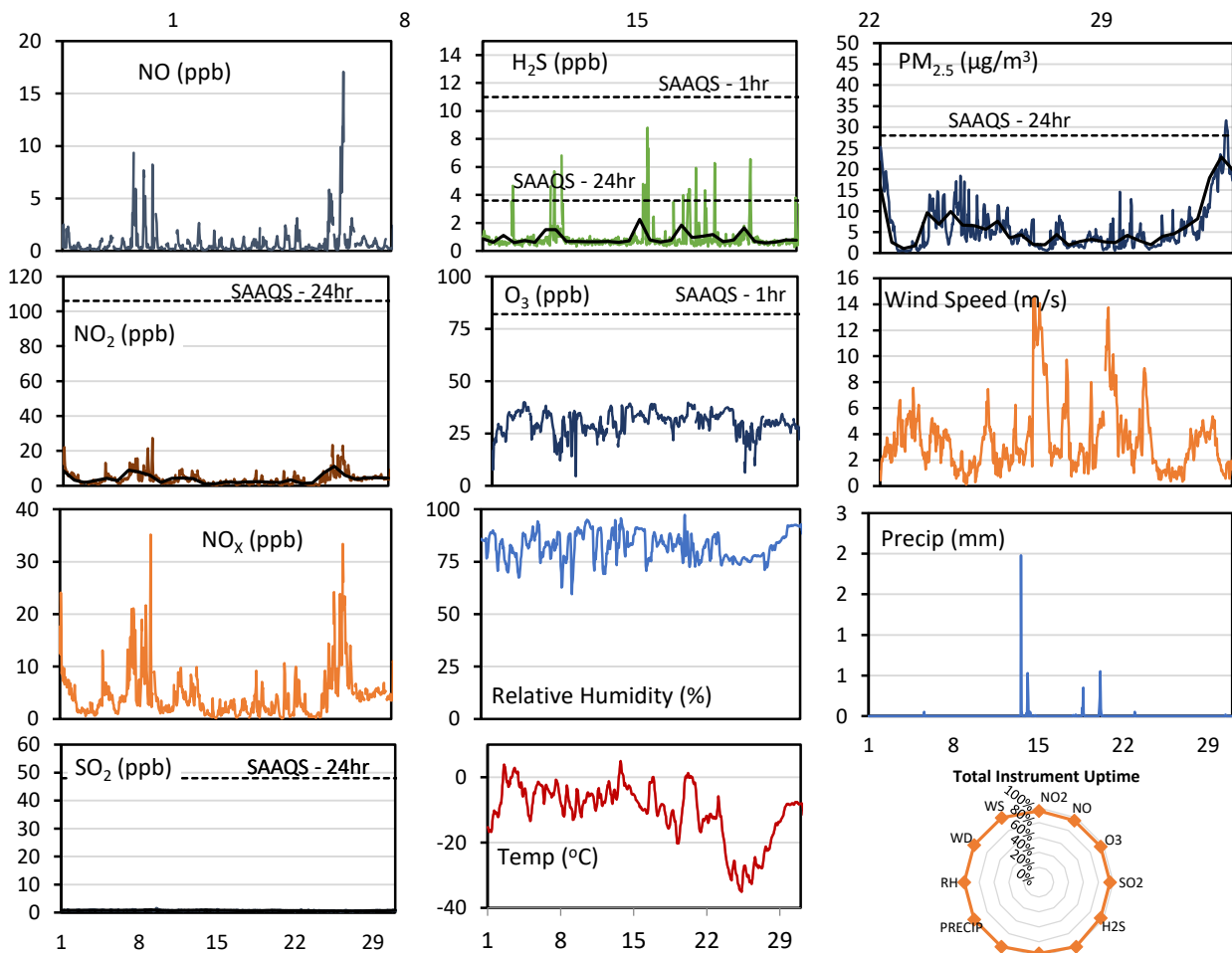
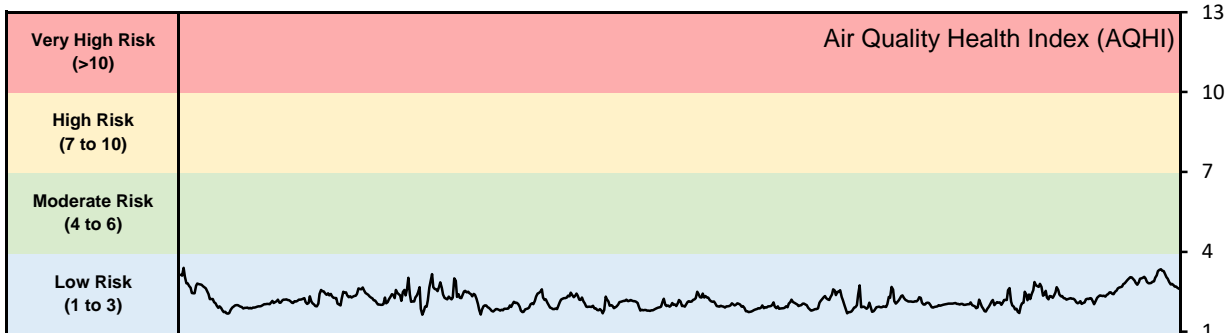
Monthly Update

- Achieved >95% of scheduled uptime for all parameters
- Downtime of 5% due to routine daily internal zeroes and spans

GPAZ Yorkton Station - January 2021 Summary Report

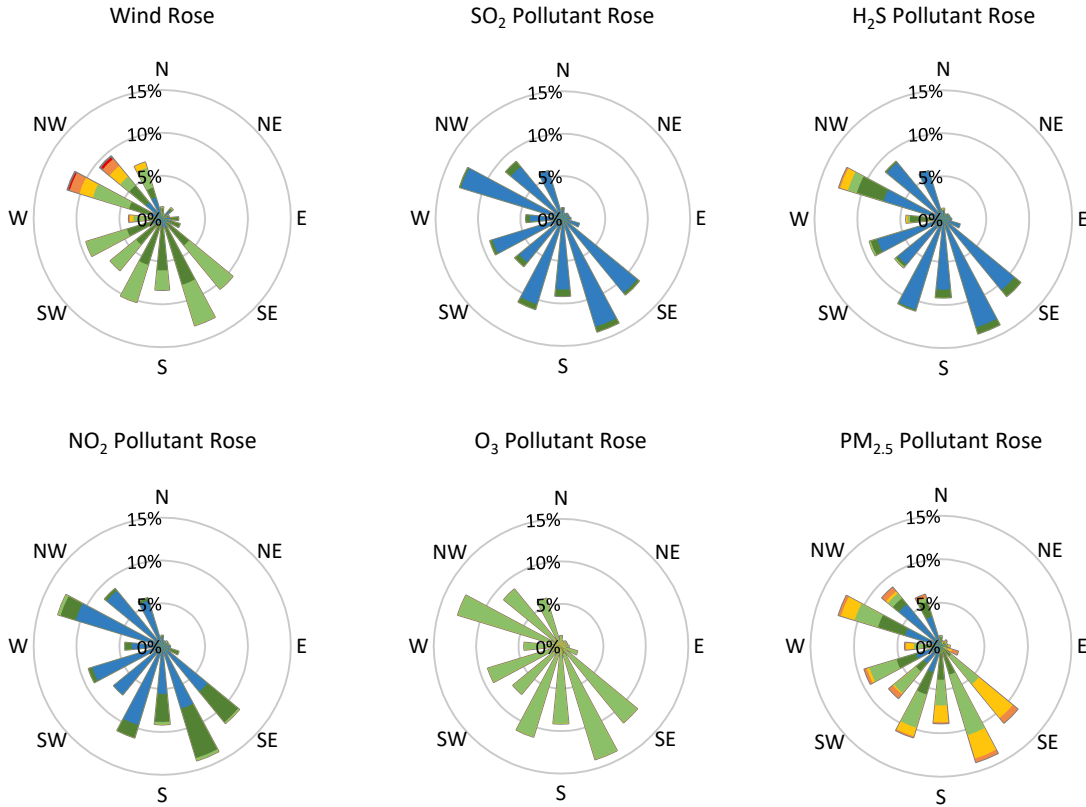
Pollutants		Month Records		24-Hour Records				1-Hour Records			
Name	Conc. Unit	Avg. Conc.	Total Uptime	Maximum		SAAQS Standard	Exceed Days	Maximum		SAAQS Standard	Exceed Hours
				Conc.	Time			Conc.	Time		
NO	ppb	0.8	96%	4.2	Jan-26	-	-	17.1	Jan-26 15:00	-	-
NO ₂	ppb	4.0	96%	11.2	Jan-26	106	0	27.4	Jan-09 05:00	159	0
NO _x	ppb	4.5	96%	15.0	Jan-26	-	-	35.2	Jan-09 05:00	-	-
SO ₂	ppb	0.7	96%	1.0	Jan-09	48	0	1.6	Jan-09 13:00	172	0
H ₂ S	ppb	0.9	96%	2.3	Jan-16	3.6	0	8.8	Jan-16 18:00	11	0
O ₃	ppb	30.3	96%	37.2	Jan-20	-	-	40.0	Jan-04 03:00	82	0
PM _{2.5}	µg/m ³	6.3	100%	22.9	Jan-30	28	0	31.6	Jan-30 10:00	-	-

SAAQS: Saskatchewan Ambient Air Quality Standards



* colored lines indicate 1-hr concentration data for all parameters; solid black lines indicate 24-hr concentrations for PM_{2.5}, NO₂, SO₂, and H₂S

GPAZ Yorkton Station - January 2021 Summary Report



Parameters	Unit	Color Code for Wind Speed and Pollution Concentration Class						
Wind Speed	m/s	$0.3 \leq WS < 1.4$	$1.4 \leq WS < 3.1$	$3.1 \leq WS < 7.8$	$7.8 \leq WS < 10.8$	$10.8 \leq WS < 13.6$	$WS \geq 13.6$	
SO ₂	ppb	$0 \leq C < 1$	$1 \leq C < 5$	$5 \leq C < 10$	$10 \leq C < 57$	$57 \leq C < 172$	$C \geq 172$	
NO ₂	ppb	$0 \leq C < 5$	$5 \leq C < 15$	$15 \leq C < 30$	$30 \leq C < 100$	$100 \leq C < 212$	$C \geq 212$	
H ₂ S	ppb	$0 \leq C < 1$	$1 \leq C < 3.6$	$3.6 \leq C < 5$	$5 \leq C < 8$	$8 \leq C < 10.8$	$C \geq 10.8$	
O ₃	ppb	$0 \leq C < 10$	$10 \leq C < 20$	$20 \leq C < 40$	$40 \leq C < 60$	$60 \leq C < 82$	$C \geq 82$	
PM _{2.5}	$\mu\text{g}/\text{m}^3$	$0 \leq C < 2$	$2 \leq C < 4$	$4 \leq C < 10$	$10 \leq C < 20$	$20 \leq C < 30$	$C \geq 30$	

Monthly Update

- Achieved at least 95% uptime for all parameters
- Downtime of <5% due to routine daily internal zeroes and spans