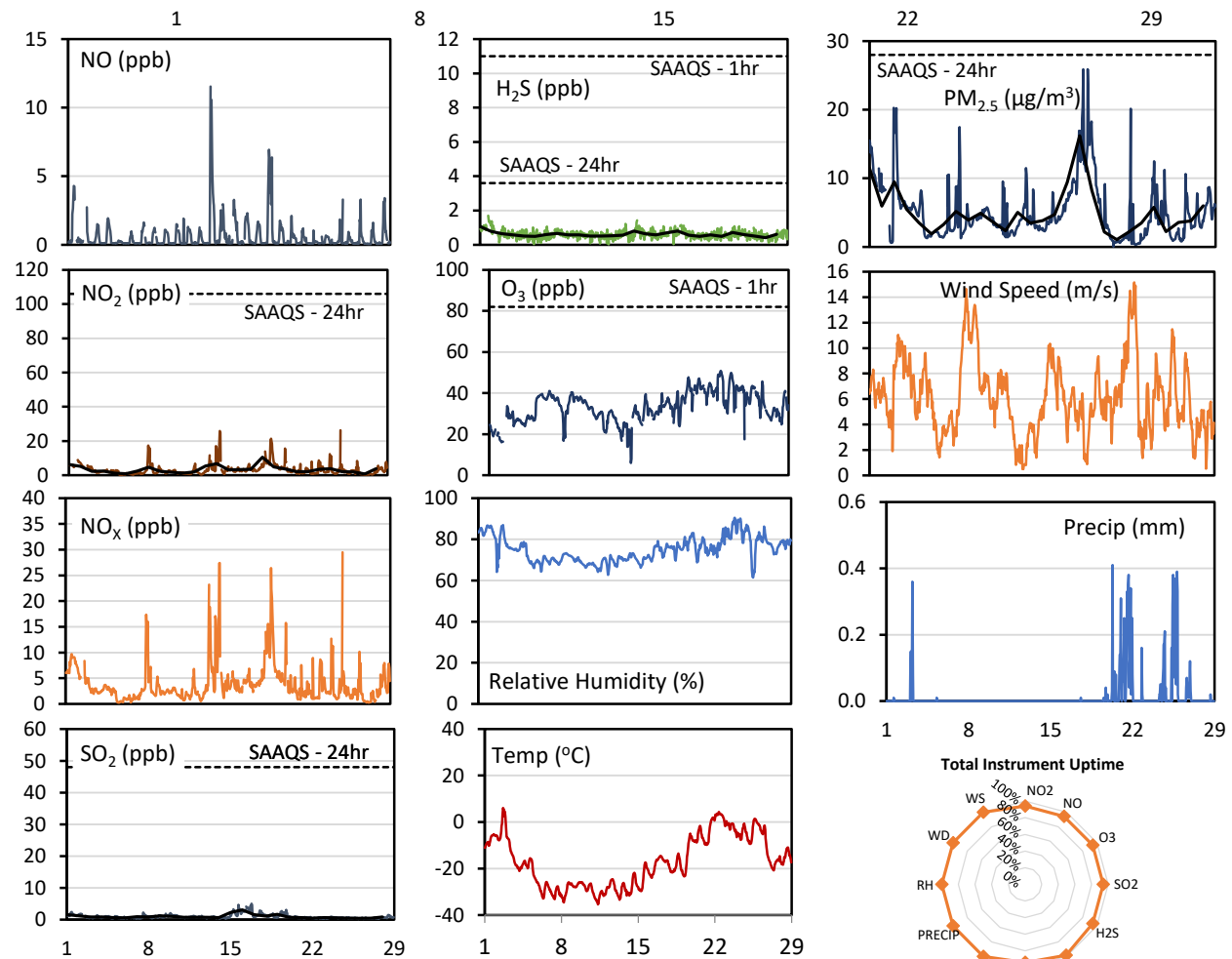
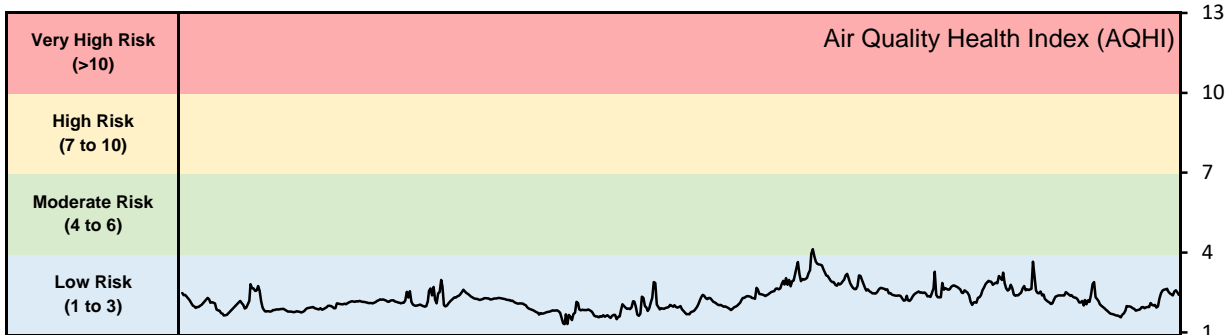


GPAZ Pense Station - February 2021 Summary Report

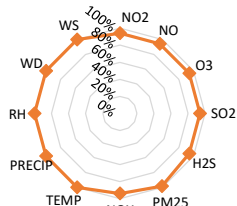
Pollutants		Month Records		24-Hour Records				1-Hour Records			
Name	Conc. Unit	Avg. Conc.	Total Uptime	Maximum		SAAQS Standard	Exceed Days	Maximum		SAAQS Standard	Exceed Hours
				Conc.	Time			Conc.	Time		
NO	ppb	0.6	94%	2.2	Feb-13	-	-	11.5	Feb-13 09:00	-	-
NO ₂	ppb	3.3	94%	10.5	Feb-18	106	0	26.3	Feb-24 21:00	159	0
NO _x	ppb	3.8	94%	12.5	Feb-18	-	-	29.5	Feb-24 21:00	-	-
SO ₂	ppb	1.0	94%	3.1	Feb-16	48	0	5.0	Feb-16 19:00	172	0
H ₂ S	ppb	0.6	94%	1.1	Feb-01	3.6	0	1.7	Feb-01 18:00	11	0
O ₃	ppb	33.2	94%	44.7	Feb-22	-	-	50.8	Feb-22 16:00	82	0
PM _{2.5}	µg/m ³	5.0	99%	16.2	Feb-18	28	0	25.9	Feb-18 16:00	-	-

SAAQS: Saskatchewan Ambient Air Quality Standards

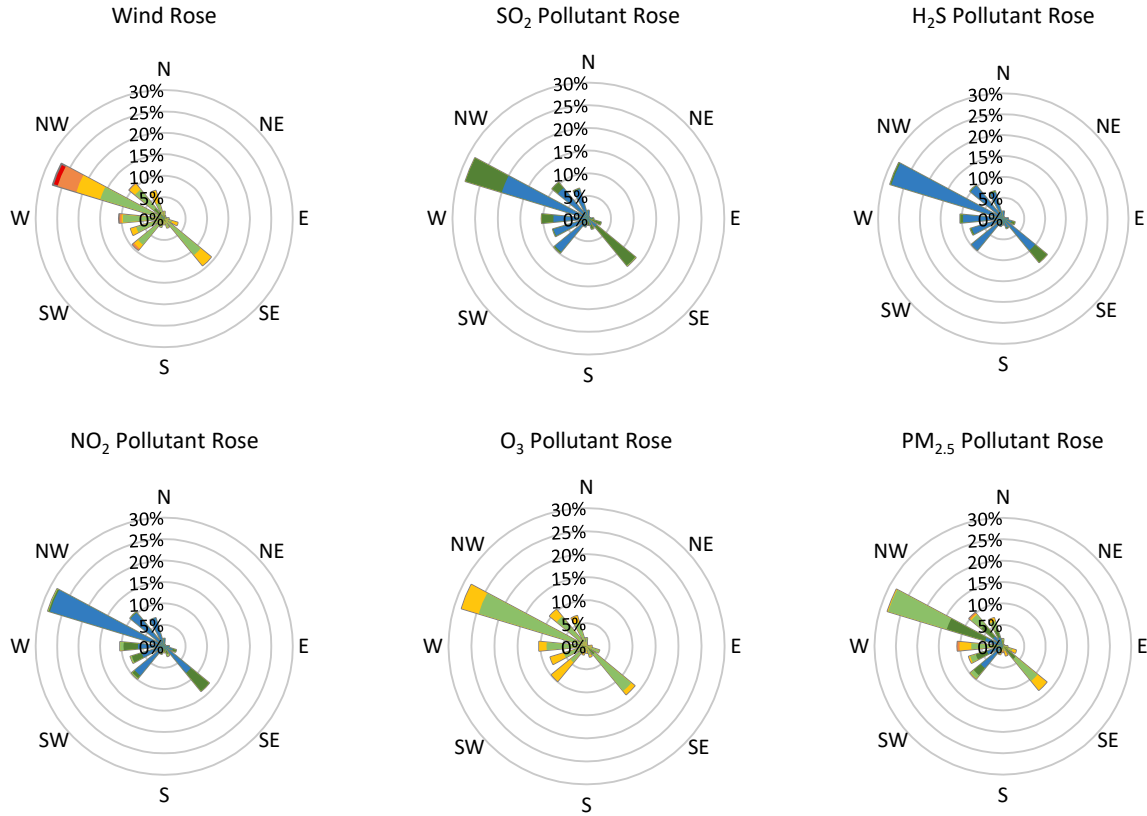


* colored lines indicate 1-hr concentration data for all parameters; solid black lines indicate 24-hr concentrations for PM_{2.5}, NO₂, SO₂, and H₂S

Total Instrument Uptime



GPAZ Pense Station - February 2021 Summary Report



Parameters	Unit	Color Code for Wind Speed and Pollution Concentration Class						
		0.3 ≤ WS < 1.4	1.4 ≤ WS < 3.1	3.1 ≤ WS < 7.8	7.8 ≤ WS < 10.8	10.8 ≤ WS < 13.6	WS ≥ 13.6	
SO ₂	ppb	0 ≤ C < 1	1 ≤ C < 5	5 ≤ C < 10	10 ≤ C < 57	57 ≤ C < 172	C ≥ 172	
NO ₂	ppb	0 ≤ C < 5	5 ≤ C < 15	15 ≤ C < 30	30 ≤ C < 100	100 ≤ C < 212	C ≥ 212	
H ₂ S	ppb	0 ≤ C < 1	1 ≤ C < 3.6	3.6 ≤ C < 5	5 ≤ C < 8	8 ≤ C < 10.8	C ≥ 10.8	
O ₃	ppb	0 ≤ C < 10	10 ≤ C < 20	20 ≤ C < 40	40 ≤ C < 60	60 ≤ C < 82	C ≥ 82	
PM _{2.5}	μg/m ³	0 ≤ C < 2	2 ≤ C < 4	4 ≤ C < 10	10 ≤ C < 20	20 ≤ C < 30	C ≥ 30	

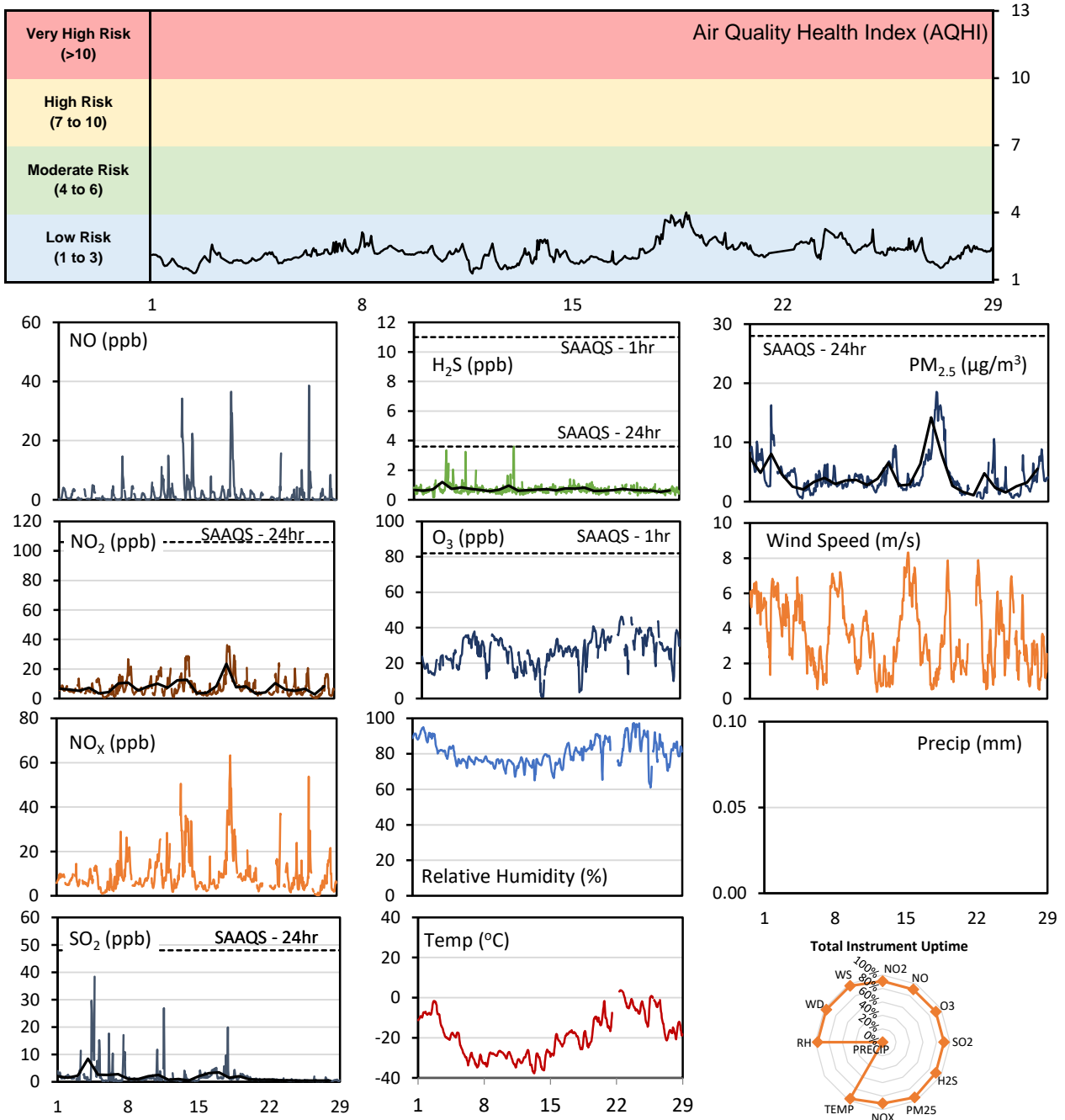
Monthly Update

- Achieved at least 94.0% of scheduled uptime for all parameters
- Downtime of <6% due to routine daily internal zeroes and spans, and quarterly calibrations

GPAZ Regina Station - February 2021 Summary Report

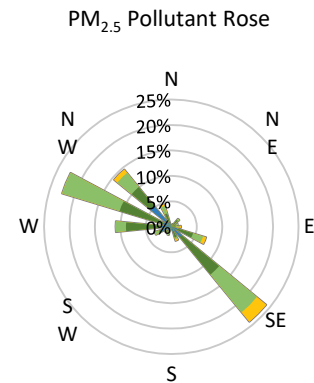
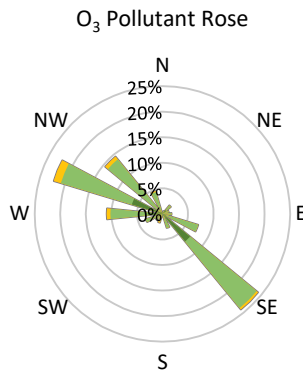
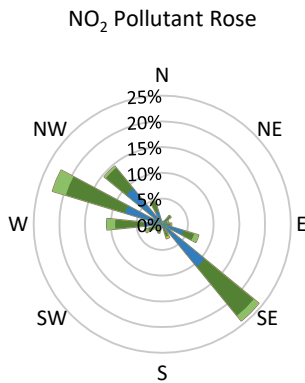
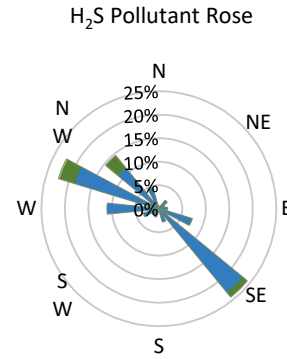
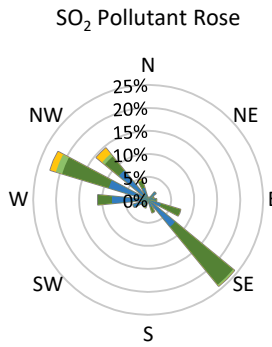
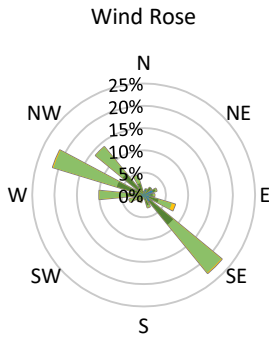
Pollutants		Month Records		24-Hour Records				1-Hour Records			
Name	Conc. Unit	Avg. Conc.	Total Uptime	Maximum		SAAQS Standard	Exceed Days	Maximum		SAAQS Standard	Exceed Hours
				Conc.	Time			Conc.	Time		
NO	ppb	2.1	91%	9.6	Feb-18	-	-	38.6	Feb-26 05:00	-	-
NO ₂	ppb	7.7	91%	23.5	Feb-18	106	0	36.2	Feb-18 02:00	159	0
NO _x	ppb	9.5	91%	32.3	Feb-18	-	-	63.3	Feb-18 09:00	-	-
SO ₂	ppb	1.8	91%	8.4	Feb-04	48	0	38.4	Feb-04 16:00	172	0
H ₂ S	ppb	0.7	91%	1.2	Feb-04	3.6	0	3.6	Feb-11 13:00	11	0
O ₃	ppb	26.5	91%	41.6	Feb-22	-	-	46.3	Feb-22 15:00	82	0
PM _{2.5}	µg/m ³	4.3	95%	14.2	Feb-18	28	0	18.6	Feb-18 12:00	-	-

SAAQS: Saskatchewan Ambient Air Quality Standards



* colored lines indicate 1-hr concentration data for all parameters; solid black lines indicate 24-hr concentrations for PM_{2.5}, NO₂, SO₂, and H₂S

GPAZ Regina Station - February 2021 Summary Report



Parameters	Unit	Color Code for Wind Speed and Pollution Concentration Class						
		0.3 ≤ WS < 1.4	1.4 ≤ WS < 3.1	3.1 ≤ WS < 7.8	7.8 ≤ WS < 10.8	10.8 ≤ WS < 13.6	WS ≥ 13.6	
SO ₂	ppb	0 ≤ C < 1	1 ≤ C < 5	5 ≤ C < 10	10 ≤ C < 57	57 ≤ C < 172	C ≥ 172	
NO ₂	ppb	0 ≤ C < 5	5 ≤ C < 15	15 ≤ C < 30	30 ≤ C < 100	100 ≤ C < 212	C ≥ 212	
H ₂ S	ppb	0 ≤ C < 1	1 ≤ C < 3.6	3.6 ≤ C < 5	5 ≤ C < 8	8 ≤ C < 10.8	C ≥ 10.8	
O ₃	ppb	0 ≤ C < 10	10 ≤ C < 20	20 ≤ C < 40	40 ≤ C < 60	60 ≤ C < 82	C ≥ 82	
PM _{2.5}	μg/m ³	0 ≤ C < 2	2 ≤ C < 4	4 ≤ C < 10	10 ≤ C < 20	20 ≤ C < 30	C ≥ 30	

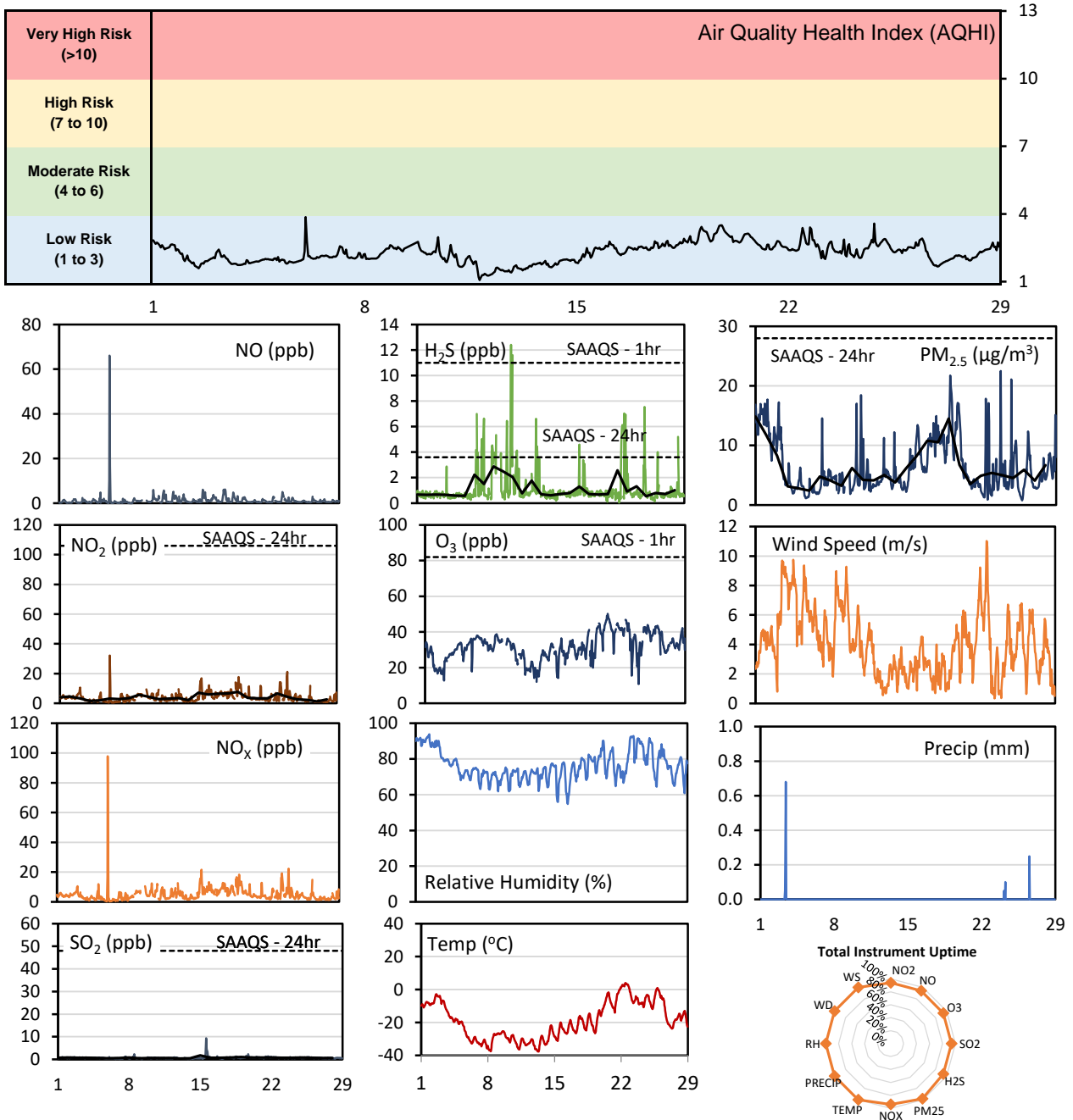
Monthly Update

- Achieved >90.9% of scheduled uptime for all parameters, except Precip at 0% due to sensor failure
- Downtime of <9.0% due to routine daily internal zeroes and spans, quarterly calibrations, and power outages

GPAZ Yorkton Station - February 2021 Summary Report

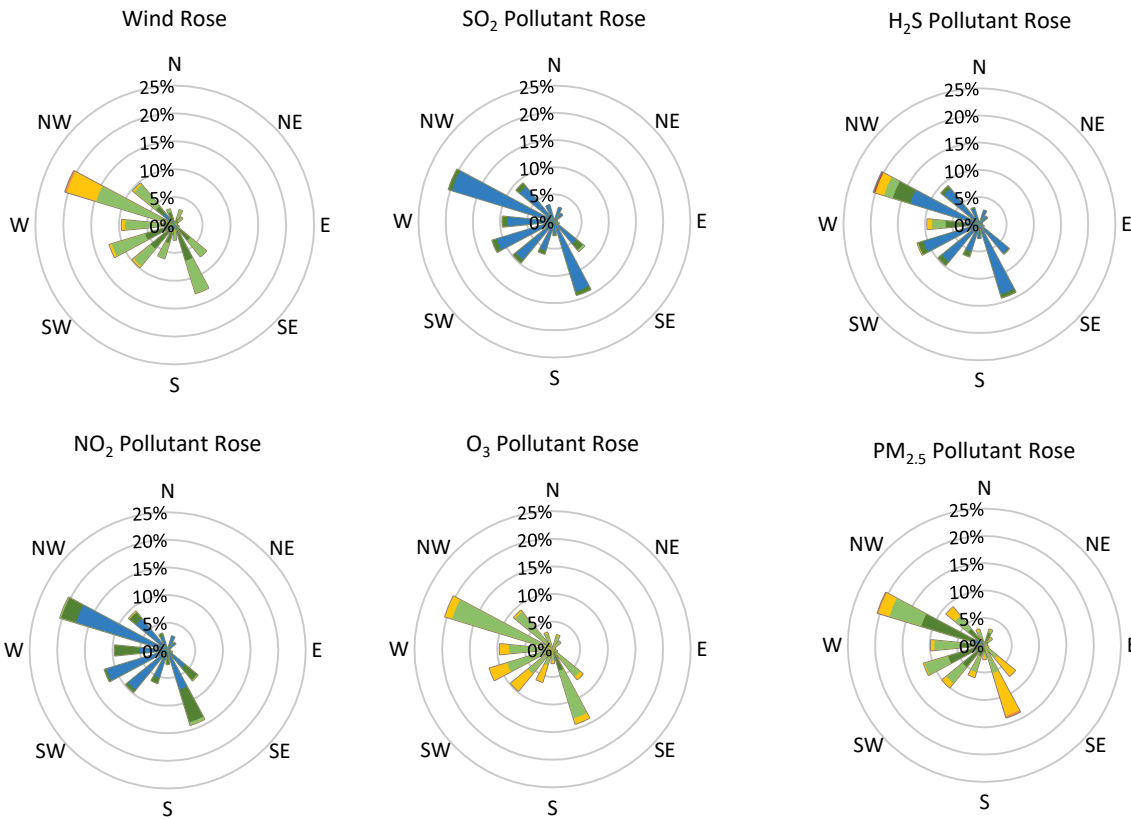
Pollutants		Month Records		24-Hour Records				1-Hour Records			
Name	Conc. Unit	Avg. Conc.	Total Uptime	Maximum		SAAQS Standard	Exceed Days	Maximum		SAAQS Standard	Exceed Hours
				Conc.	Time			Conc.	Time		
NO	ppb	1.2	94%	4.4	Feb-06	-	-	66.1	Feb-06 01:00	-	-
NO ₂	ppb	3.9	94%	7.7	Feb-19	106	0	32.2	Feb-06 01:00	159	0
NO _x	ppb	5.1	94%	9.2	Feb-15	-	-	97.8	Feb-06 01:00	-	-
SO ₂	ppb	0.7	94%	1.7	Feb-15	48	0	9.3	Feb-15 14:00	172	0
H ₂ S	ppb	1.1	94%	2.9	Feb-09	3.6	0	12.4	Feb-10 20:00	11	2
O ₃	ppb	31.6	94%	43.6	Feb-20	-	-	50.2	Feb-20 16:00	82	0
PM _{2.5}	µg/m ³	6.3	98%	14.9	Feb-01	28	0	22.5	Feb-23 20:00	-	-

SAAQS: Saskatchewan Ambient Air Quality Standards



* colored lines indicate 1-hr concentration data for all parameters; solid black lines indicate 24-hr concentrations for PM_{2.5}, NO₂, SO₂, and H₂S

GPAZ Yorkton Station - February 2021 Summary Report



Parameters	Unit	Color Code for Wind Speed and Pollution Concentration Class					
Wind Speed	m/s	$0.3 \leq WS < 1.4$	$1.4 \leq WS < 3.1$	$3.1 \leq WS < 7.8$	$7.8 \leq WS < 10.8$	$10.8 \leq WS < 13.6$	$WS \geq 13.6$
SO ₂	ppb	$0 \leq C < 1$	$1 \leq C < 5$	$5 \leq C < 10$	$10 \leq C < 57$	$57 \leq C < 172$	$C \geq 172$
NO ₂	ppb	$0 \leq C < 5$	$5 \leq C < 15$	$15 \leq C < 30$	$30 \leq C < 100$	$100 \leq C < 212$	$C \geq 212$
H ₂ S	ppb	$0 \leq C < 1$	$1 \leq C < 3.6$	$3.6 \leq C < 5$	$5 \leq C < 8$	$8 \leq C < 10.8$	$C \geq 10.8$
O ₃	ppb	$0 \leq C < 10$	$10 \leq C < 20$	$20 \leq C < 40$	$40 \leq C < 60$	$60 \leq C < 82$	$C \geq 82$
PM _{2.5}	$\mu\text{g}/\text{m}^3$	$0 \leq C < 2$	$2 \leq C < 4$	$4 \leq C < 10$	$10 \leq C < 20$	$20 \leq C < 30$	$C \geq 30$

Monthly Update

- Achieved at least 93.9% of scheduled uptime for all parameters
- Downtime of <7% due to routine daily internal zeroes and spans, and quarterly calibrations

Exceedance Summary (1- Hour Average - Exceedances in Bold)

Exceedance Time	AQHI	NO ₂ ppb	NO ppb	SO ₂ ppb	O ₃ ppb	NO _x ppb	H ₂ S ppb	PM _{2.5} $\mu\text{g}/\text{m}^3$	Temp °C	WD deg	WS m/s
Feb-10 20:00	2.6	5.9	1.2	0.5	24.3	7.1	12.4	18.5	-30.9	284.9	4.0
Feb-11 00:00	2.2	9.3	2.2	0.5	22.1	11.5	11.6	6.2	-32.9	285.2	3.2