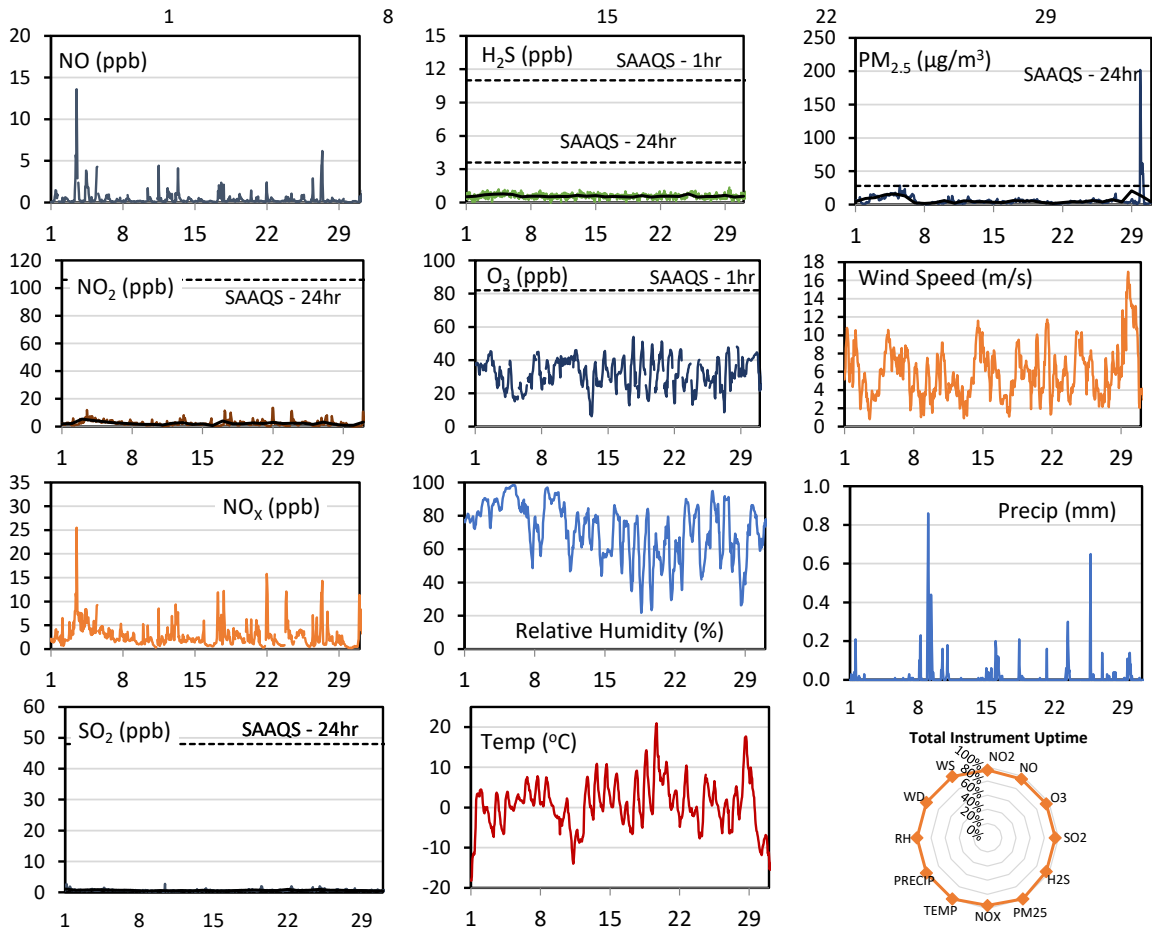
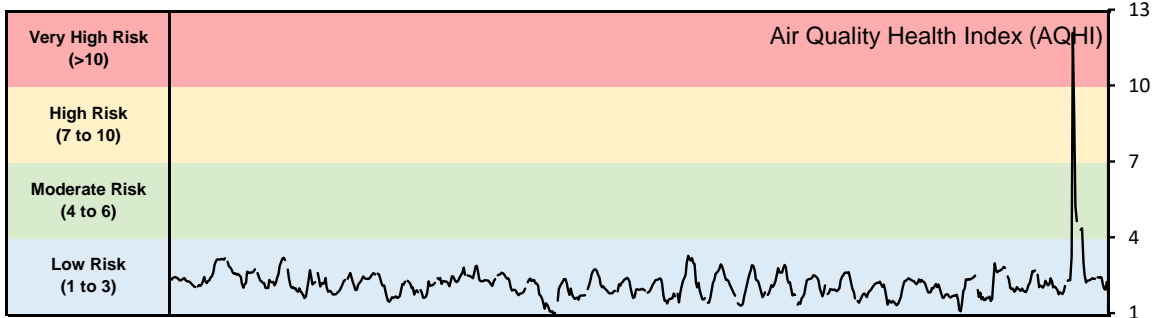


GPAZ Pense Station - March 2021 Summary Report

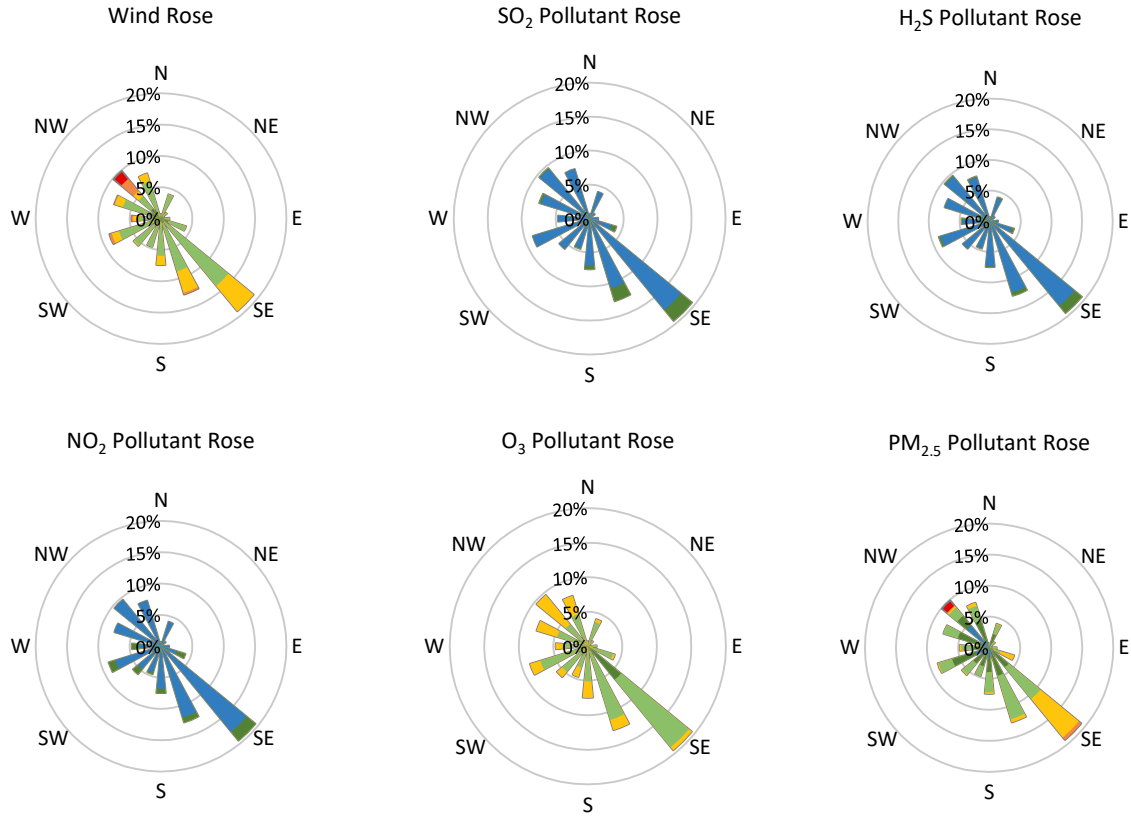
Pollutants		Month Records		24-Hour Records				1-Hour Records			
Name	Conc. Unit	Avg. Conc.	Total Uptime	Maximum		SAAQS Standard	Exceed Days	Maximum		SAAQS Standard	Exceed Hours
				Conc.	Time			Conc.	Time		
NO	ppb	0.4	96%	1.9	Mar-03	-	-	13.6	Mar-03 12:00	-	-
NO ₂	ppb	2.4	96%	5.4	Mar-03	106	0	13.6	Mar-22 00:00	159	0
NO _x	ppb	2.8	96%	7.3	Mar-03	-	-	25.5	Mar-03 12:00	-	-
SO ₂	ppb	0.6	96%	1.1	Mar-01	48	0	2.8	Mar-10 10:00	172	0
H ₂ S	ppb	0.6	96%	0.8	Mar-25	3.6	0	1.4	Mar-29 11:00	11	0
O ₃	ppb	32.2	96%	41.1	Mar-11	-	-	54.0	Mar-17 16:00	82	0
PM _{2.5}	µg/m ³	6.2	100%	20.6	Mar-29	28	0	201.9	Mar-29 21:00	-	-

SAAQS: Saskatchewan Ambient Air Quality Standards



* colored lines indicate 1-hr concentration data for all parameters; solid black lines indicate 24-hr concentrations for PM_{2.5}, NO₂, SO₂, and H₂S

GPAZ Pense Station - March 2021 Summary Report



Parameters	Unit	Color Code for Wind Speed and Pollution Concentration Class						
Wind Speed	m/s	$0.3 \leq WS < 1.4$	$1.4 \leq WS < 3.1$	$3.1 \leq WS < 7.8$	$7.8 \leq WS < 10.8$	$10.8 \leq WS < 13.6$	$WS \geq 13.6$	
SO ₂	ppb	$0 \leq C < 1$	$1 \leq C < 5$	$5 \leq C < 10$	$10 \leq C < 57$	$57 \leq C < 172$	$C \geq 172$	
NO ₂	ppb	$0 \leq C < 5$	$5 \leq C < 15$	$15 \leq C < 30$	$30 \leq C < 100$	$100 \leq C < 212$	$C \geq 212$	
H ₂ S	ppb	$0 \leq C < 1$	$1 \leq C < 3.6$	$3.6 \leq C < 5$	$5 \leq C < 8$	$8 \leq C < 10.8$	$C \geq 10.8$	
O ₃	ppb	$0 \leq C < 10$	$10 \leq C < 20$	$20 \leq C < 40$	$40 \leq C < 60$	$60 \leq C < 82$	$C \geq 82$	
PM _{2.5}	$\mu\text{g}/\text{m}^3$	$0 \leq C < 2$	$2 \leq C < 4$	$4 \leq C < 10$	$10 \leq C < 20$	$20 \leq C < 30$	$C \geq 30$	

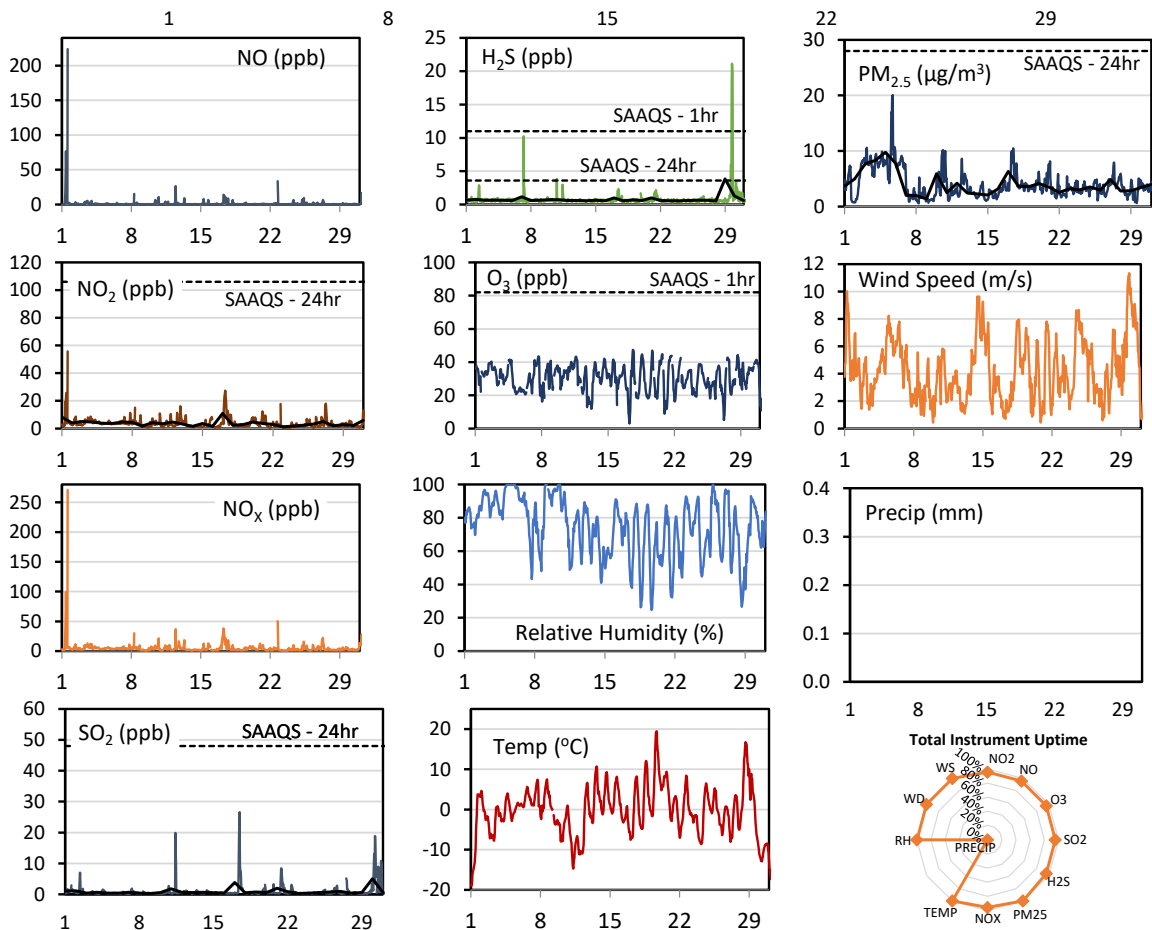
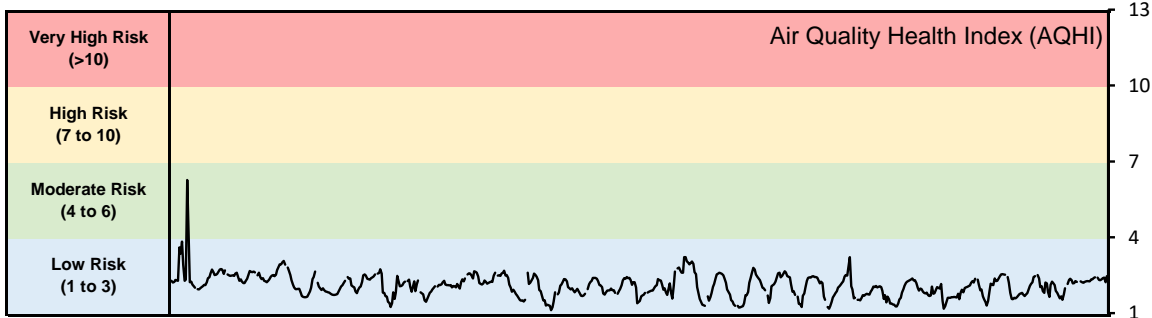
Monthly Update

- Achieved at least 95% of scheduled uptime for all parameters
- Downtime of <5% due to routine daily internal zeroes and spans

GPAZ Regina Station - March 2021 Summary Report

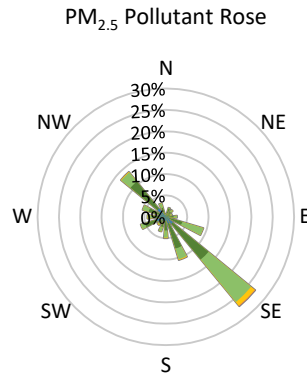
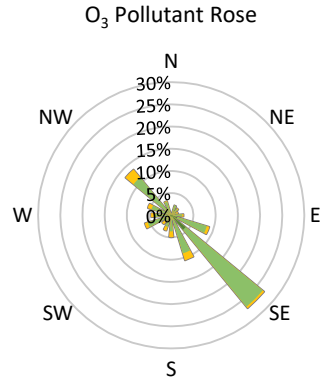
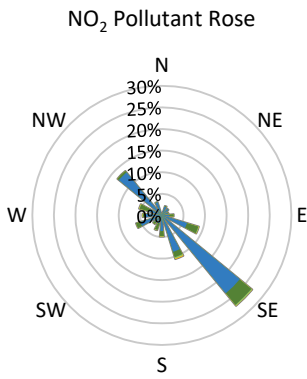
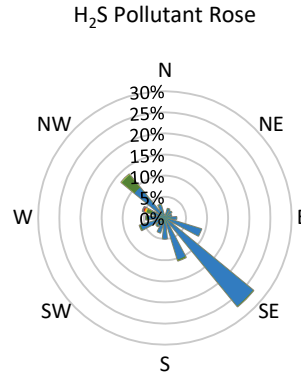
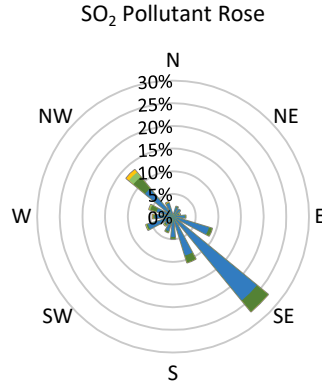
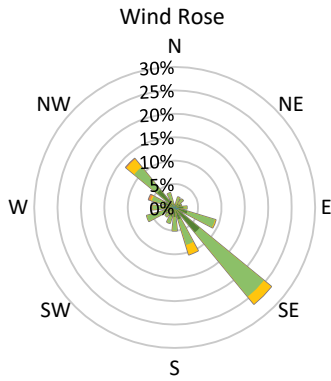
Pollutants		Month Records		24-Hour Records				1-Hour Records			
Name	Conc. Unit	Avg. Conc.	Total Uptime	Maximum		SAAQS Standard	Exceed Days	Maximum		SAAQS Standard	Exceed Hours
				Conc.	Time			Conc.	Time		
NO	ppb	1.6	96%	17.6	Mar-01	-	-	223.8	Mar-01 14:00	-	-
NO ₂	ppb	3.8	96%	11.0	Mar-17	106	0	55.7	Mar-01 14:00	159	0
NO _x	ppb	5.3	96%	25.1	Mar-01	-	-	270.8	Mar-01 14:00	-	-
SO ₂	ppb	0.9	96%	5.0	Mar-30	48	0	26.6	Mar-17 11:00	172	0
H ₂ S	ppb	0.8	96%	3.9	Mar-29	3.6	1	21.1	Mar-29 18:00	11	3
O ₃	ppb	30.4	96%	37.4	Mar-30	-	-	47.4	Mar-17 15:00	82	0
PM _{2.5}	µg/m ³	4.0	100%	9.8	Mar-05	28	0	20.1	Mar-05 17:00	-	-

SAAQS: Saskatchewan Ambient Air Quality Standards



* colored lines indicate 1-hr concentration data for all parameters; solid black lines indicate 24-hr concentrations for PM_{2.5}, NO₂, SO₂, and H₂S

GPAZ Regina Station - March 2021 Summary Report



Parameters	Unit	Color Code for Wind Speed and Pollution Concentration Class					
		$0.3 \leq WS < 1.4$	$1.4 \leq WS < 3.1$	$3.1 \leq WS < 7.8$	$7.8 \leq WS < 10.8$	$10.8 \leq WS < 13.6$	$WS \geq 13.6$
SO ₂	ppb	$0 \leq C < 1$	$1 \leq C < 5$	$5 \leq C < 10$	$10 \leq C < 57$	$57 \leq C < 172$	$C \geq 172$
NO ₂	ppb	$0 \leq C < 5$	$5 \leq C < 15$	$15 \leq C < 30$	$30 \leq C < 100$	$100 \leq C < 212$	$C \geq 212$
H ₂ S	ppb	$0 \leq C < 1$	$1 \leq C < 3.6$	$3.6 \leq C < 5$	$5 \leq C < 8$	$8 \leq C < 10.8$	$C \geq 10.8$
O ₃	ppb	$0 \leq C < 10$	$10 \leq C < 20$	$20 \leq C < 40$	$40 \leq C < 60$	$60 \leq C < 82$	$C \geq 82$
PM _{2.5}	$\mu\text{g}/\text{m}^3$	$0 \leq C < 2$	$2 \leq C < 4$	$4 \leq C < 10$	$10 \leq C < 20$	$20 \leq C < 30$	$C \geq 30$

Monthly Update

- Achieved at least 95% of scheduled uptime for all parameters, except Precip at 0% due to sensor failure
- Downtime of <5% due to routine daily internal zeroes and spans

Exceedance Summary (1- Hour Average - Exceedances in Bold)

Exceedance Time	AQHI	NO ₂ ppb	NO ppb	SO ₂ ppb	O ₃ ppb	NO _x ppb	H ₂ S ppb	PM _{2.5} $\mu\text{g}/\text{m}^3$	Temp °C	WD deg	WS m/s
Mar-29 17:00	2.1	3.3	0.8	0.5	33.2	4.0	18.1	3.1	-5.2	298.3	10.8
Mar-29 18:00	2.3	3.9	0.6	0.6	33.6	4.4	21.1	5.0	-6.2	301.5	11.1
Mar-29 19:00	2.4	5.2	0.6	0.6	32.5	5.6	19.7	5.0	-6.8	302.1	11.1

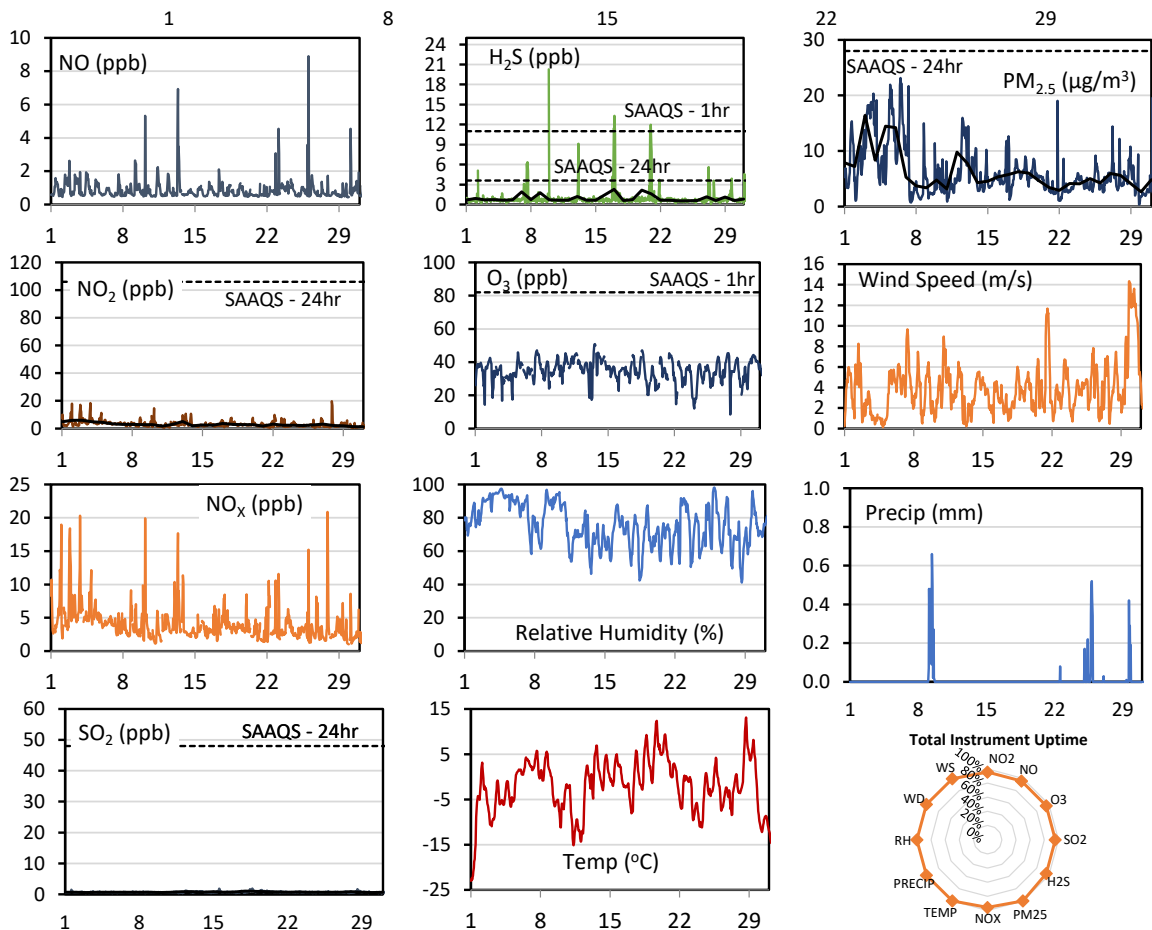
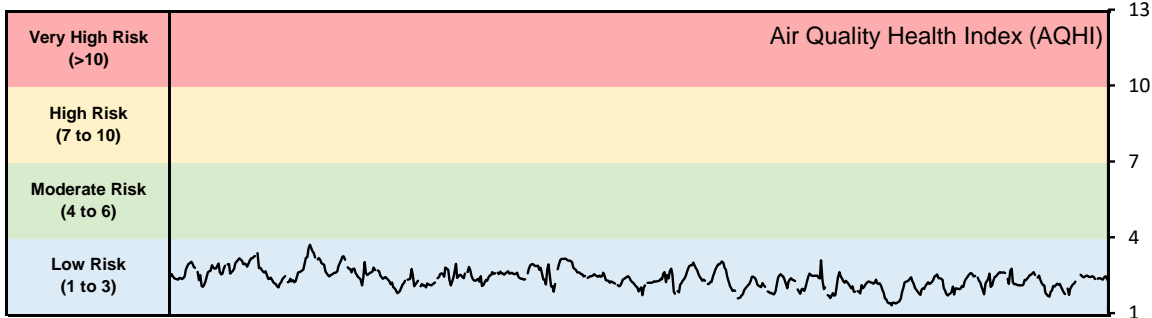
Exceedance Summary (24- Hour Average - Exceedances in Bold)

Exceedance Time	AQHI	NO ₂ ppb	NO ppb	SO ₂ ppb	O ₃ ppb	NO _x ppb	H ₂ S ppb	PM _{2.5} $\mu\text{g}/\text{m}^3$	Temp °C	WD deg	WS m/s
Mar-29	2.0	2.8	0.6	0.6	31.7	3.4	3.9	2.8	0.9	262.4	7.2

GPAZ Yorkton Station - March 2021 Summary Report

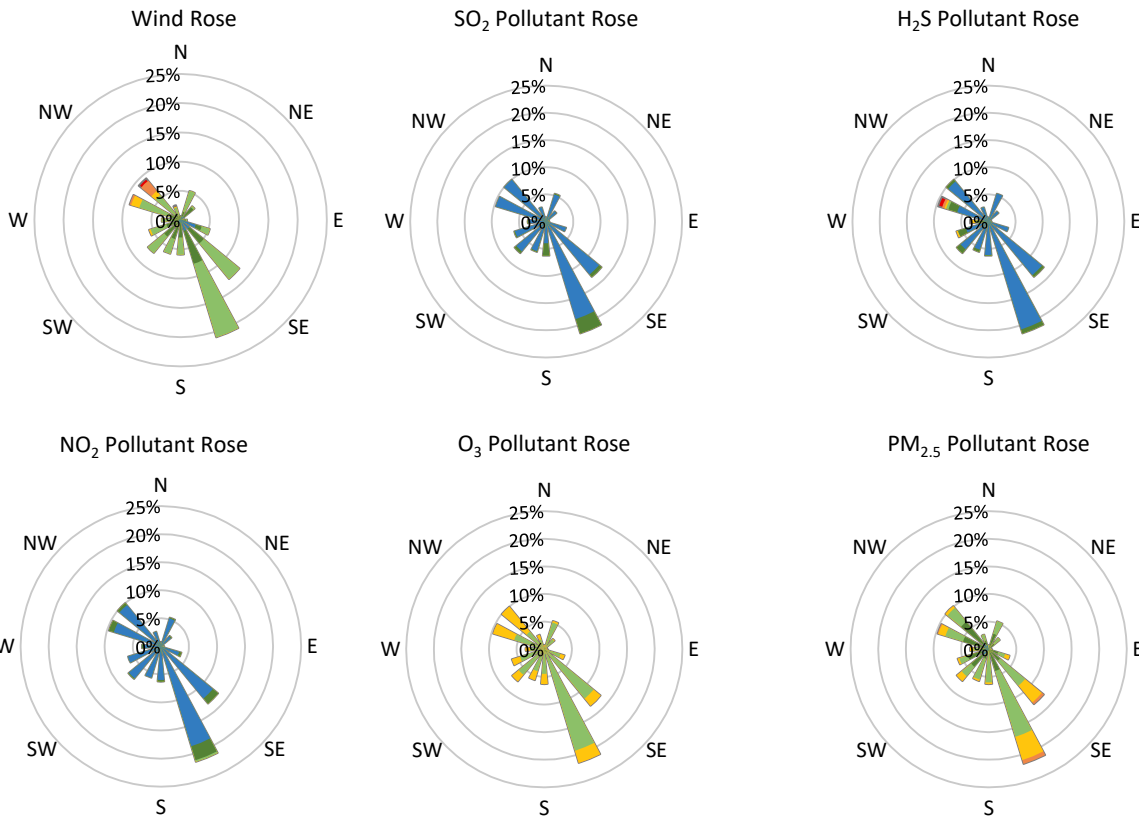
Pollutants		Month Records		24-Hour Records				1-Hour Records			
Name	Conc. Unit	Avg. Conc.	Total Uptime	Maximum		SAAQS Standard	Exceed Days	Maximum		SAAQS Standard	Exceed Hours
				Conc.	Time			Conc.	Time		
NO	ppb	0.9	96%	1.4	Mar-13	-	-	8.9	Mar-26 01:00	-	-
NO ₂	ppb	3.1	96%	6.0	Mar-03	106	0	19.8	Mar-27 21:00	159	0
NO _x	ppb	3.9	96%	7.1	Mar-03	-	-	20.9	Mar-27 21:00	-	-
SO ₂	ppb	0.7	96%	1.0	Mar-18	48	0	1.9	Mar-15 13:00	172	0
H ₂ S	ppb	0.9	96%	2.3	Mar-17	3.6	0	20.3	Mar-09 22:00	11	5
O ₃	ppb	35.0	96%	41.9	Mar-11	-	-	50.9	Mar-13 15:00	82	0
PM _{2.5}	µg/m ³	6.1	100%	16.4	Mar-03	28	0	23.1	Mar-06 11:00	-	-

SAAQS: Saskatchewan Ambient Air Quality Standards



* colored lines indicate 1-hr concentration data for all parameters; solid black lines indicate 24-hr concentrations for PM_{2.5}, NO₂, SO₂, and H₂S

GPAZ Yorkton Station - March 2021 Summary Report



Parameters	Unit	Color Code for Wind Speed and Pollution Concentration Class						
Wind Speed	m/s	$0.3 \leq WS < 1.4$	$1.4 \leq WS < 3.1$	$3.1 \leq WS < 7.8$	$7.8 \leq WS < 10.8$	$10.8 \leq WS < 13.6$	$WS \geq 13.6$	
SO ₂	ppb	$0 \leq C < 1$	$1 \leq C < 5$	$5 \leq C < 10$	$10 \leq C < 57$	$57 \leq C < 172$	$C \geq 172$	
NO ₂	ppb	$0 \leq C < 5$	$5 \leq C < 15$	$15 \leq C < 30$	$30 \leq C < 100$	$100 \leq C < 212$	$C \geq 212$	
H ₂ S	ppb	$0 \leq C < 1$	$1 \leq C < 3.6$	$3.6 \leq C < 5$	$5 \leq C < 8$	$8 \leq C < 10.8$	$C \geq 10.8$	
O ₃	ppb	$0 \leq C < 10$	$10 \leq C < 20$	$20 \leq C < 40$	$40 \leq C < 60$	$60 \leq C < 82$	$C \geq 82$	
PM _{2.5}	$\mu\text{g}/\text{m}^3$	$0 \leq C < 2$	$2 \leq C < 4$	$4 \leq C < 10$	$10 \leq C < 20$	$20 \leq C < 30$	$C \geq 30$	

Monthly Update

- Achieved at least 95% of scheduled uptime for all parameters
- Downtime of <5% due to routine daily internal zeroes and spans

Exceedance Summary (1- Hour Average - Exceedances in Bold)

Exceedance Time	AQHI	NO ₂ ppb	NO ppb	SO ₂ ppb	O ₃ ppb	NO _x ppb	H ₂ S ppb	PM _{2.5} $\mu\text{g}/\text{m}^3$	Temp °C	WD deg	WS m/s
Mar-09 22:00	2.7	9.0	0.9	0.5	31.5	9.9	20.3	6.6	-7.8	285.4	2.7
Mar-16 23:00	2.4	4.3	0.6	0.6	34.7	5.0	11.5	4.4	-4.4	287.7	2.8
Mar-17 00:00	2.7	5.7	0.7	0.7	33.2	6.3	11.2	9.5	-5.1	282.2	2.7
Mar-17 01:00	2.8	4.6	0.6	0.8	34.0	5.3	13.3	12.7	-5.8	282.3	2.4
Mar-20 23:00	2.3	2.9	0.6	0.8	36.6	3.4	12.0	3.3	3.5	289.4	4.7