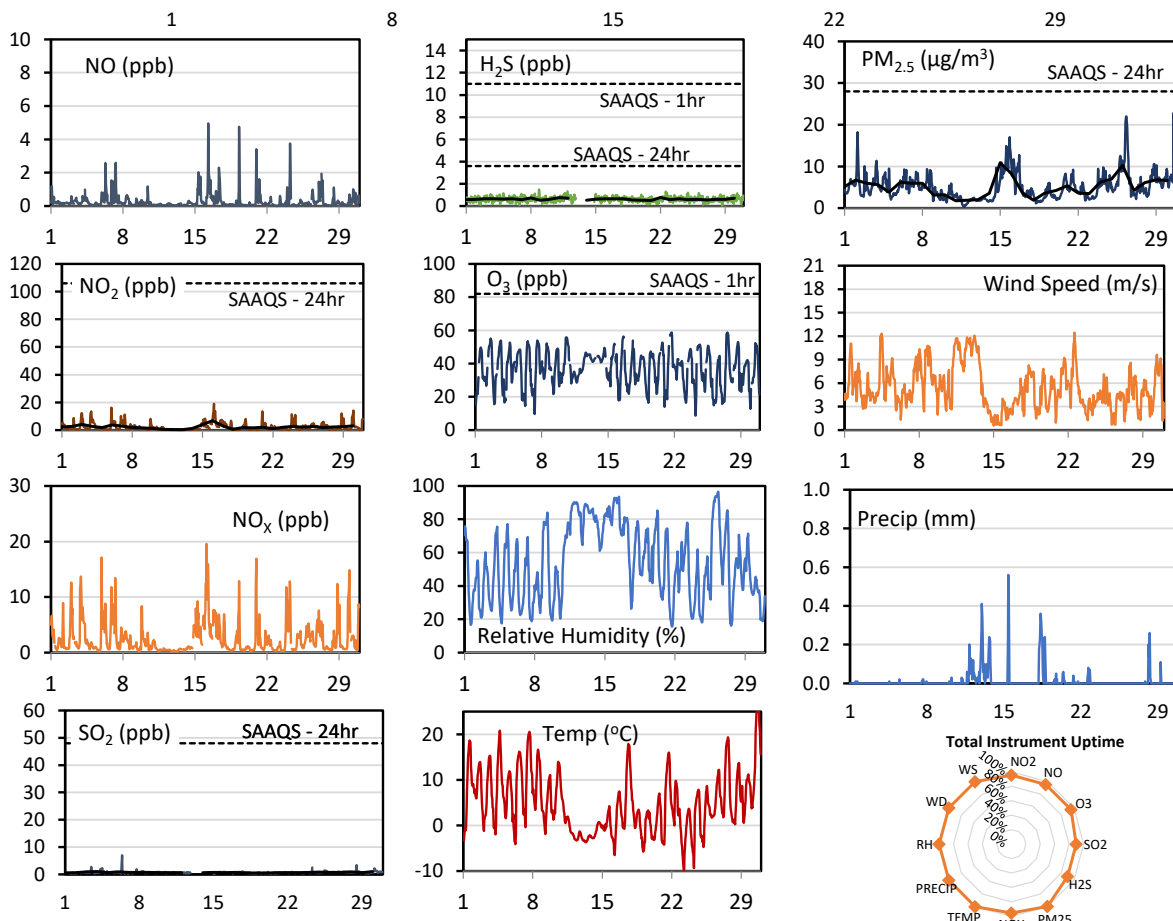
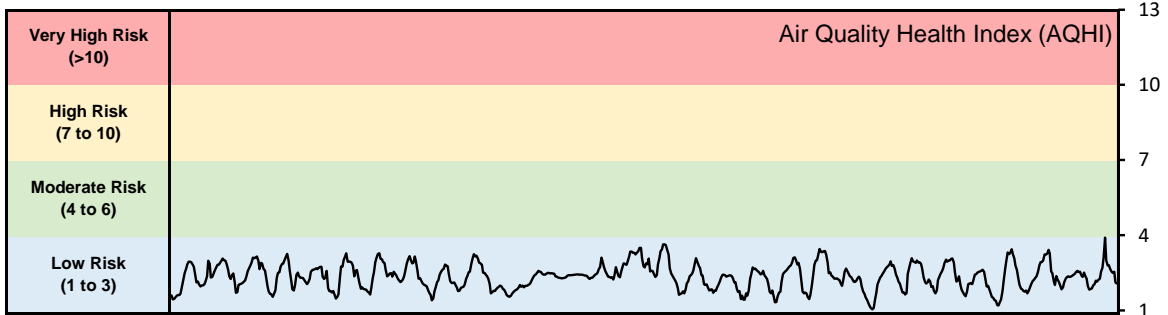


GPAZ Pense Station - April 2021 Summary Report

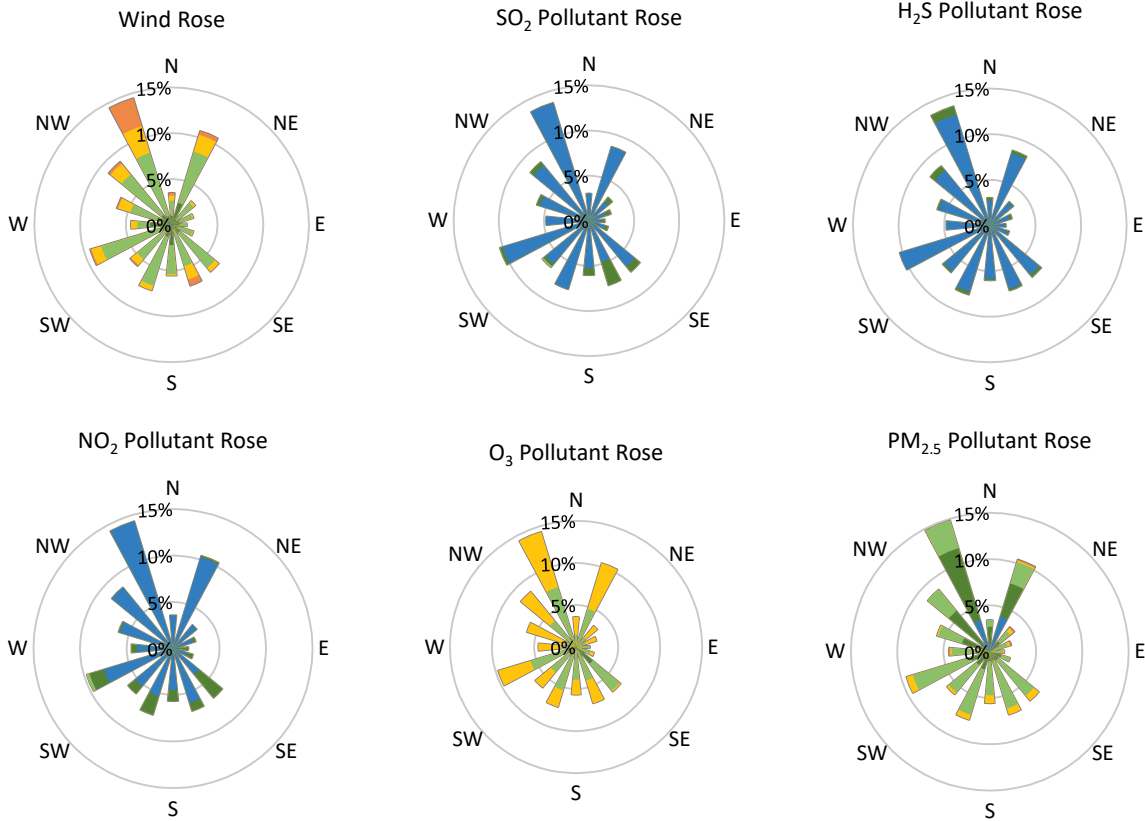
Pollutants		Month Records		24-Hour Records				1-Hour Records			
Name	Conc. Unit	Avg. Conc.	Total Uptime	Maximum		SAAQS Standard	Exceed Days	Maximum		SAAQS Standard	Exceed Hours
				Conc.	Time			Conc.	Time		
NO	ppb	0.3	95%	0.9	Apr-16	-	-	5.0	Apr-16 07:00	-	-
NO ₂	ppb	2.3	95%	6.9	Apr-16	106	0	19.0	Apr-16 03:00	159	0
NO _x	ppb	2.6	95%	7.8	Apr-16	-	-	19.6	Apr-16 03:00	-	-
SO ₂	ppb	0.7	90%	1.0	Apr-30	48	0	7.0	Apr-06 09:00	172	0
H ₂ S	ppb	0.6	90%	0.8	Apr-22	3.6	0	1.5	Apr-08 21:00	11	0
O ₃	ppb	37.0	95%	43.3	Apr-13	-	-	58.7	Apr-21 17:00	82	0
PM _{2.5}	µg/m ³	5.1	100%	10.9	Apr-15	28	0	22.9	Apr-30 14:00	-	-

SAAQS: Saskatchewan Ambient Air Quality Standards



* colored lines indicate 1-hr concentration data for all parameters; solid black lines indicate 24-hr concentrations for PM_{2.5}, NO₂, SO₂, and H₂S

GPAZ Pense Station - April 2021 Summary Report



Parameters	Unit	Color Code for Wind Speed and Pollution Concentration Class						
		0.3 ≤ WS < 1.4	1.4 ≤ WS < 3.1	3.1 ≤ WS < 7.8	7.8 ≤ WS < 10.8	10.8 ≤ WS < 13.6	WS ≥ 13.6	
SO ₂	ppb	0 ≤ C < 1	1 ≤ C < 5	5 ≤ C < 10	10 ≤ C < 57	57 ≤ C < 172	C ≥ 172	
NO ₂	ppb	0 ≤ C < 5	5 ≤ C < 15	15 ≤ C < 30	30 ≤ C < 100	100 ≤ C < 212	C ≥ 212	
H ₂ S	ppb	0 ≤ C < 1	1 ≤ C < 3.6	3.6 ≤ C < 5	5 ≤ C < 8	8 ≤ C < 10.8	C ≥ 10.8	
O ₃	ppb	0 ≤ C < 10	10 ≤ C < 20	20 ≤ C < 40	40 ≤ C < 60	60 ≤ C < 82	C ≥ 82	
PM _{2.5}	µg/m ³	0 ≤ C < 2	2 ≤ C < 4	4 ≤ C < 10	10 ≤ C < 20	20 ≤ C < 30	C ≥ 30	

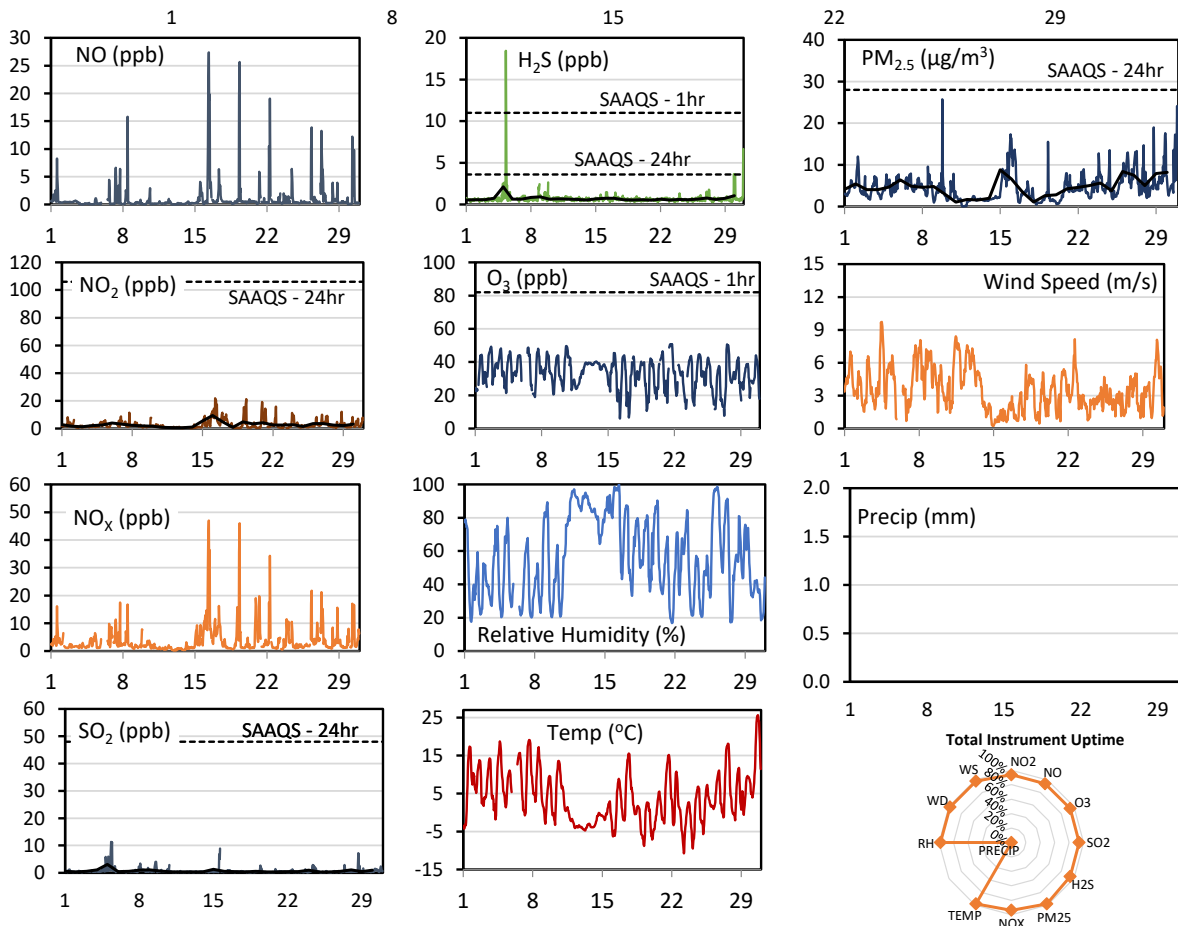
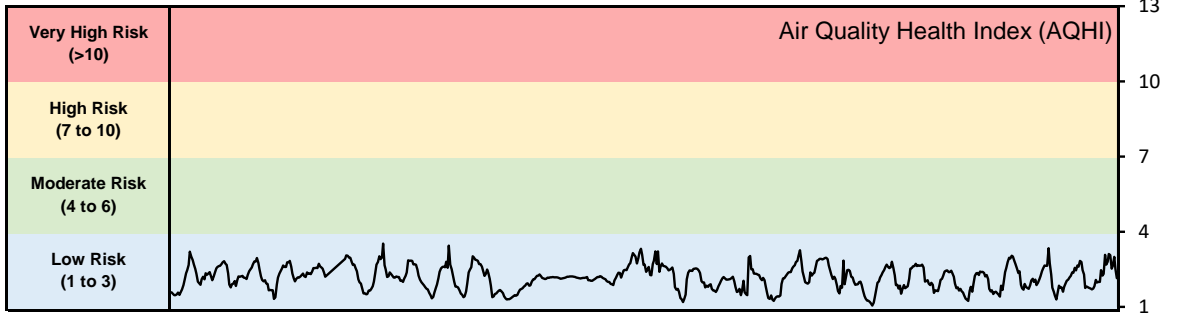
Monthly Update

- Achieved > 94% of scheduled uptime for all parameters
- Downtime of <6% due to routine daily internal zeroes and spans

GPAZ Regina Station - April 2021 Summary Report

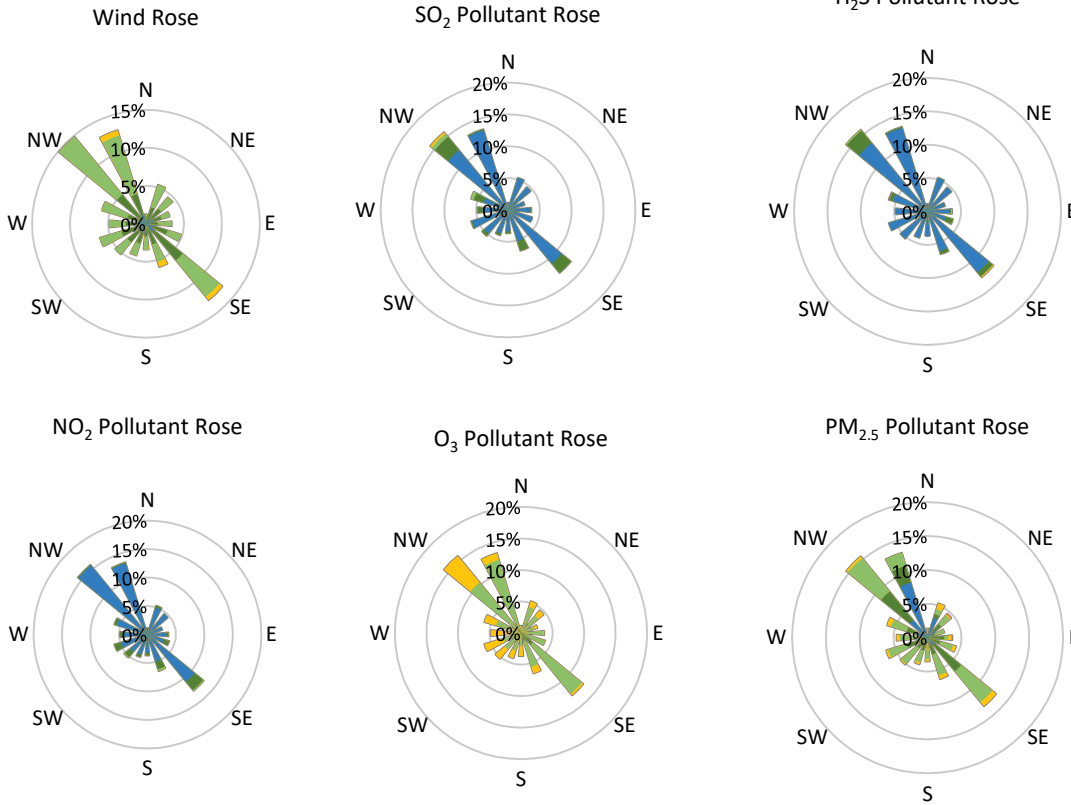
Pollutants		Month Records		24-Hour Records				1-Hour Records			
Name	Conc. Unit	Avg. Conc.	Total Uptime	Maximum		SAAQS Standard	Exceed Days	Maximum		SAAQS Standard	Exceed Hours
				Conc.	Time			Conc.	Time		
NO	ppb	1.0	94%	5.1	Apr-16	-	-	27.4	Apr-16 08:00	-	-
NO ₂	ppb	2.8	94%	9.4	Apr-16	106	0	21.9	Apr-16 06:00	159	0
NO _x	ppb	3.7	94%	14.2	Apr-16	-	-	47.0	Apr-16 08:00	-	-
SO ₂	ppb	0.7	94%	3.1	Apr-05	48	0	11.3	Apr-05 08:00	172	0
H ₂ S	ppb	0.7	94%	2.1	Apr-05	3.6	0	18.4	Apr-05 07:00	11	1
O ₃	ppb	33.1	94%	39.3	Apr-13	-	-	50.8	Apr-21 18:00	82	0
PM _{2.5}	µg/m ³	4.6	98%	8.8	Apr-15	28	0	25.7	Apr-09 19:00	-	-

SAAQS: Saskatchewan Ambient Air Quality Standards



* colored lines indicate 1-hr concentration data for all parameters; solid black lines indicate 24-hr concentrations for PM_{2.5}, NO₂, SO₂, and H₂S

GPAZ Regina Station - April 2021 Summary Report



Parameters	Unit	Color Code for Wind Speed and Pollution Concentration Class					
Wind Speed	m/s	$0.3 \leq WS < 1.4$	$1.4 \leq WS < 3.1$	$3.1 \leq WS < 7.8$	$7.8 \leq WS < 10.8$	$10.8 \leq WS < 13.6$	$WS \geq 13.6$
SO ₂	ppb	$0 \leq C < 1$	$1 \leq C < 5$	$5 \leq C < 10$	$10 \leq C < 57$	$57 \leq C < 172$	$C \geq 172$
NO ₂	ppb	$0 \leq C < 5$	$5 \leq C < 15$	$15 \leq C < 30$	$30 \leq C < 100$	$100 \leq C < 212$	$C \geq 212$
H ₂ S	ppb	$0 \leq C < 1$	$1 \leq C < 3.6$	$3.6 \leq C < 5$	$5 \leq C < 8$	$8 \leq C < 10.8$	$C \geq 10.8$
O ₃	ppb	$0 \leq C < 10$	$10 \leq C < 20$	$20 \leq C < 40$	$40 \leq C < 60$	$60 \leq C < 82$	$C \geq 82$
PM _{2.5}	$\mu\text{g}/\text{m}^3$	$0 \leq C < 2$	$2 \leq C < 4$	$4 \leq C < 10$	$10 \leq C < 20$	$20 \leq C < 30$	$C \geq 30$

Monthly Update

- Achieved > 93% of scheduled uptime for all parameters except Precip at 0% due to sensor failure
- Downtime of <7% due to routine daily internal zeroes and spans

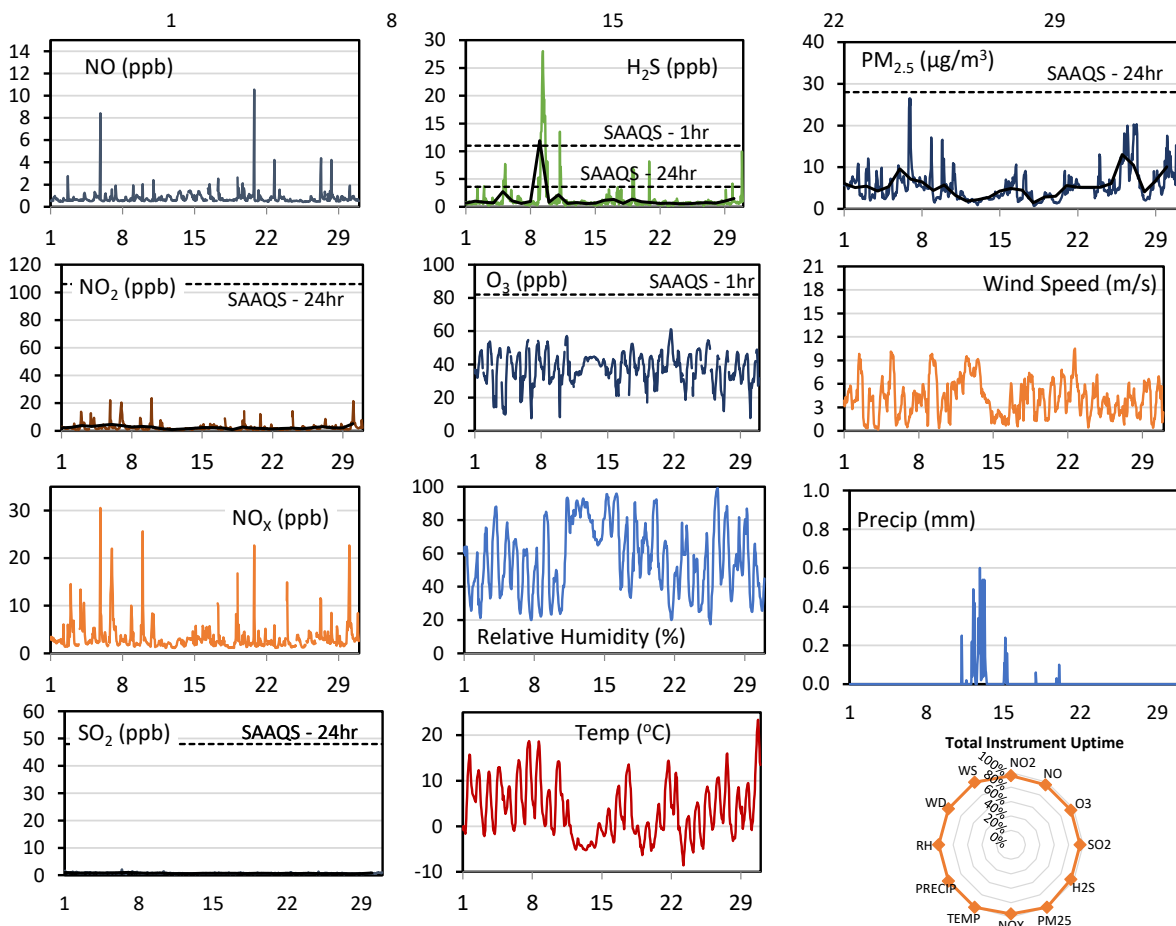
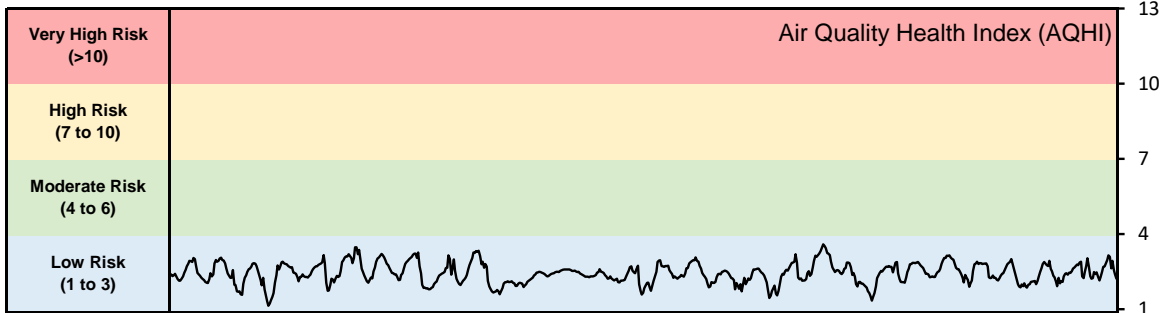
Exceedance Summary (1- Hour Average - Exceedances in Bold)

Exceedance Time	AQHI	NO ₂ ppb	NO ppb	SO ₂ ppb	O ₃ ppb	NO _x ppb	H ₂ S ppb	PM _{2.5} $\mu\text{g}/\text{m}^3$	Temp °C	WD deg	WS m/s
Apr-05 07:00	2.4	6.0	0.7	6.0	31.6	6.5	18.4	4.9	1.3	302.1	6.0

GPAZ Yorkton Station - April 2021 Summary Report

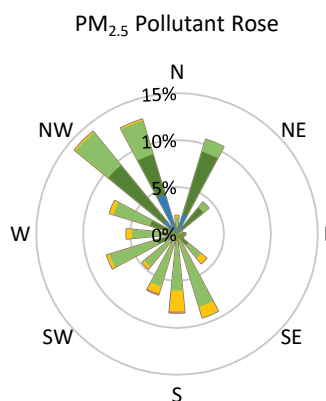
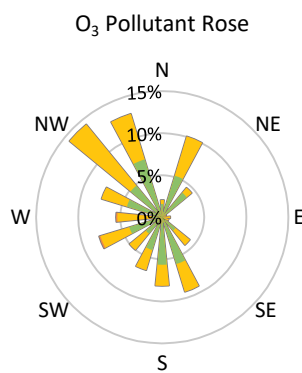
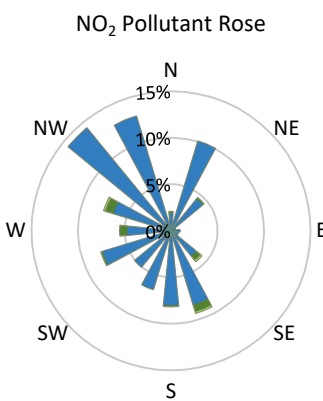
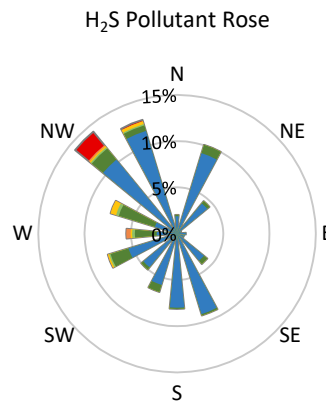
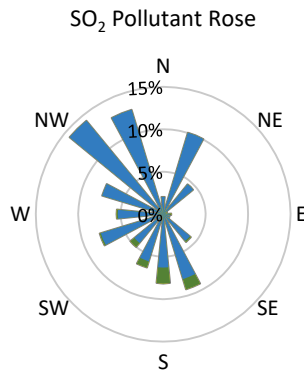
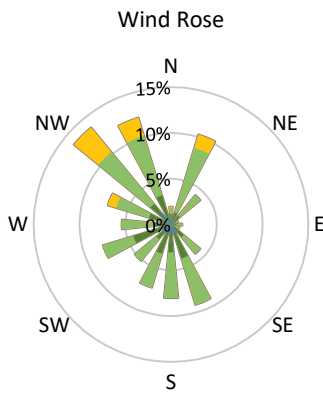
Pollutants		Month Records		24-Hour Records				1-Hour Records			
Name	Conc. Unit	Avg. Conc.	Total Uptime	Maximum		SAAQS Standard	Exceed Days	Maximum		SAAQS Standard	Exceed Hours
				Conc.	Time			Conc.	Time		
NO	ppb	0.8	96%	1.3	Apr-20	-	-	10.6	Apr-20 19:00	-	-
NO ₂	ppb	2.5	96%	5.2	Apr-30	106	0	23.6	Apr-09 23:00	159	0
NO _x	ppb	3.3	96%	6.0	Apr-30	-	-	30.6	Apr-05 20:00	-	-
SO ₂	ppb	0.7	96%	1.0	Apr-01	48	0	2.1	Apr-06 10:00	172	0
H ₂ S	ppb	1.3	96%	11.9	Apr-09	3.6	1	28.0	Apr-09 08:00	11	12
O ₃	ppb	37.8	96%	47.8	Apr-21	-	-	61.2	Apr-21 16:00	82	0
PM _{2.5}	µg/m ³	5.4	100%	13.0	Apr-26	28	0	26.5	Apr-06 21:00	-	-

SAAQS: Saskatchewan Ambient Air Quality Standards



* colored lines indicate 1-hr concentration data for all parameters; solid black lines indicate 24-hr concentrations for PM_{2.5}, NO₂, SO₂, and H₂S

GPAZ Yorkton Station - April 2021 Summary Report



Parameters	Unit	Color Code for Wind Speed and Pollution Concentration Class						
		0.3 ≤ WS < 1.4	1.4 ≤ WS < 3.1	3.1 ≤ WS < 7.8	7.8 ≤ WS < 10.8	10.8 ≤ WS < 13.6	WS ≥ 13.6	
SO ₂	ppb	0 ≤ C < 1	1 ≤ C < 5	5 ≤ C < 10	10 ≤ C < 57	57 ≤ C < 172	C ≥ 172	
NO ₂	ppb	0 ≤ C < 5	5 ≤ C < 15	15 ≤ C < 30	30 ≤ C < 100	100 ≤ C < 212	C ≥ 212	
H ₂ S	ppb	0 ≤ C < 1	1 ≤ C < 3.6	3.6 ≤ C < 5	5 ≤ C < 8	8 ≤ C < 10.8	C ≥ 10.8	
O ₃	ppb	0 ≤ C < 10	10 ≤ C < 20	20 ≤ C < 40	40 ≤ C < 60	60 ≤ C < 82	C ≥ 82	
PM _{2.5}	µg/m ³	0 ≤ C < 2	2 ≤ C < 4	4 ≤ C < 10	10 ≤ C < 20	20 ≤ C < 30	C ≥ 30	

Monthly Update

- Achieved > 95% of scheduled uptime for all parameters
- Downtime of <5% due to routine daily internal zeroes and spans

GPAZ Yorkton Station - April 2021 Summary Report

Exceedance Summary (1- Hour Average - Exceedances in Bold)											
Exceedance Time	AQHI	NO ₂	NO	SO ₂	O ₃	NO _x	H ₂ S	PM _{2.5}	Temp	WD	WS
	-	ppb	ppb	ppb	ppb	ppb	ppb	µg/m ³	°C	deg	m/s
Apr-09 03:00	1.8	0.9	0.5	0.8	32.3	1.5	13.3	1.5	2.0	312.2	9.7
Apr-09 04:00	1.8	0.9	0.6	0.8	31.6	1.4	13.6	1.7	1.0	308.8	9.4
Apr-09 05:00	1.8	0.9	0.7	0.7	31.2	1.6	16.6	2.1	0.5	307.9	9.3
Apr-09 06:00	1.9	0.9	0.7	0.9	32.2	1.6	21.6	2.1	0.1	315.2	9.8
Apr-09 07:00	1.9	1.0	0.9	0.7	32.0	1.9	27.1	2.7	0.1	317.9	9.3
Apr-09 08:00	2.0	1.2	1.1	0.6	34.0	2.3	28.0	2.8	0.3	314.0	9.2
Apr-09 09:00	2.1	1.0	0.9	0.7	35.6	1.9	24.1	2.7	0.5	316.4	8.8
Apr-09 10:00	2.1	1.0	0.9	0.7	36.3	1.9	20.1	2.7	2.5	317.0	8.3
Apr-09 11:00	2.3	1.1	1.0	0.6	39.1	2.1	15.2	2.7	4.8	322.0	8.5
Apr-09 12:00	2.3	0.9	0.9	0.6	41.0	1.8	19.3	2.6	6.1	315.4	9.0
Apr-09 14:00	2.4	1.1	0.8	0.8	42.3	1.9	16.4	2.7	7.3	309.6	8.6
Apr-11 04:00	1.7	0.8	0.6	0.7	29.8	1.3	13.5	2.2	1.2	340.9	6.3

Exceedance Summary (24- Hour Average - Exceedances in Bold)											
Exceedance Time	AQHI	NO ₂	NO	SO ₂	O ₃	NO _x	H ₂ S	PM _{2.5}	Temp	WD	WS
	-	ppb	ppb	ppb	ppb	ppb	ppb	µg/m ³	°C	deg	m/s
Apr-09	2.3	3.1	0.9	0.7	34.5	4.0	11.9	4.4	3.5	290.3	6.9