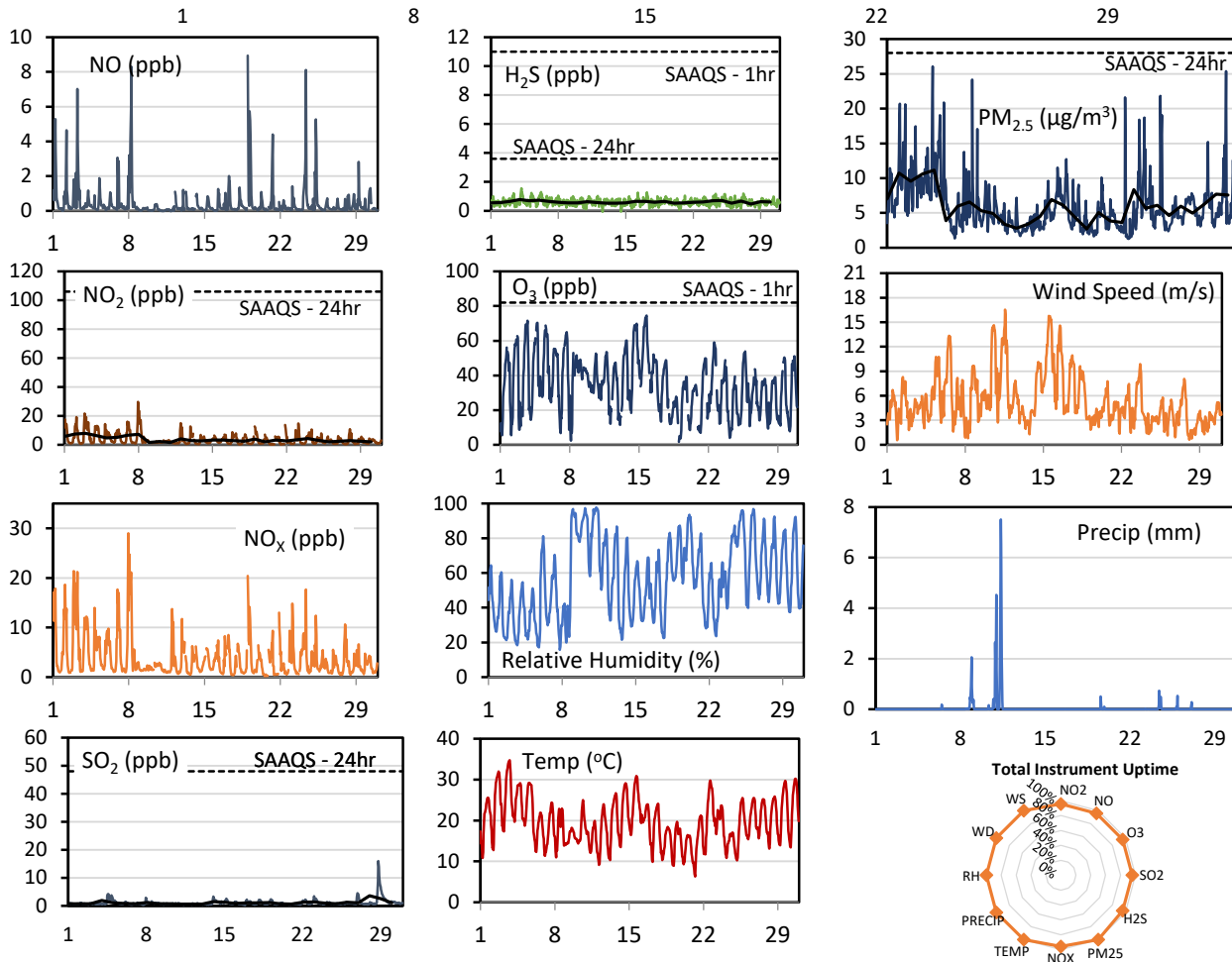
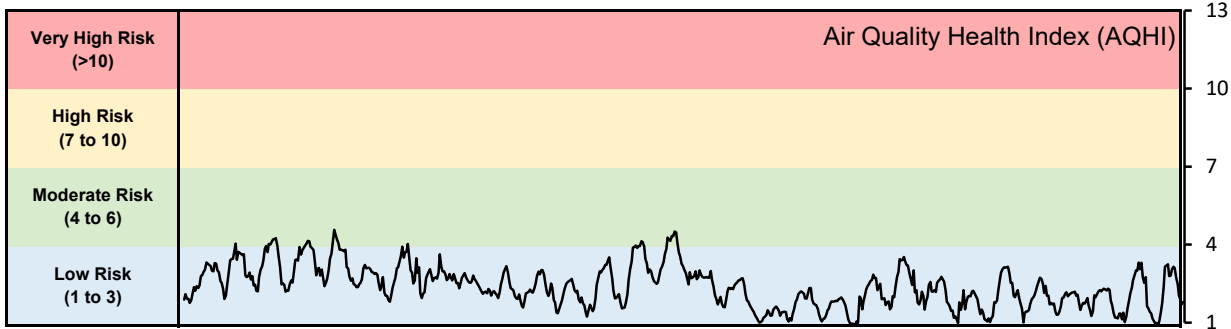


## GPAZ Pense Station - June 2021 Summary Report

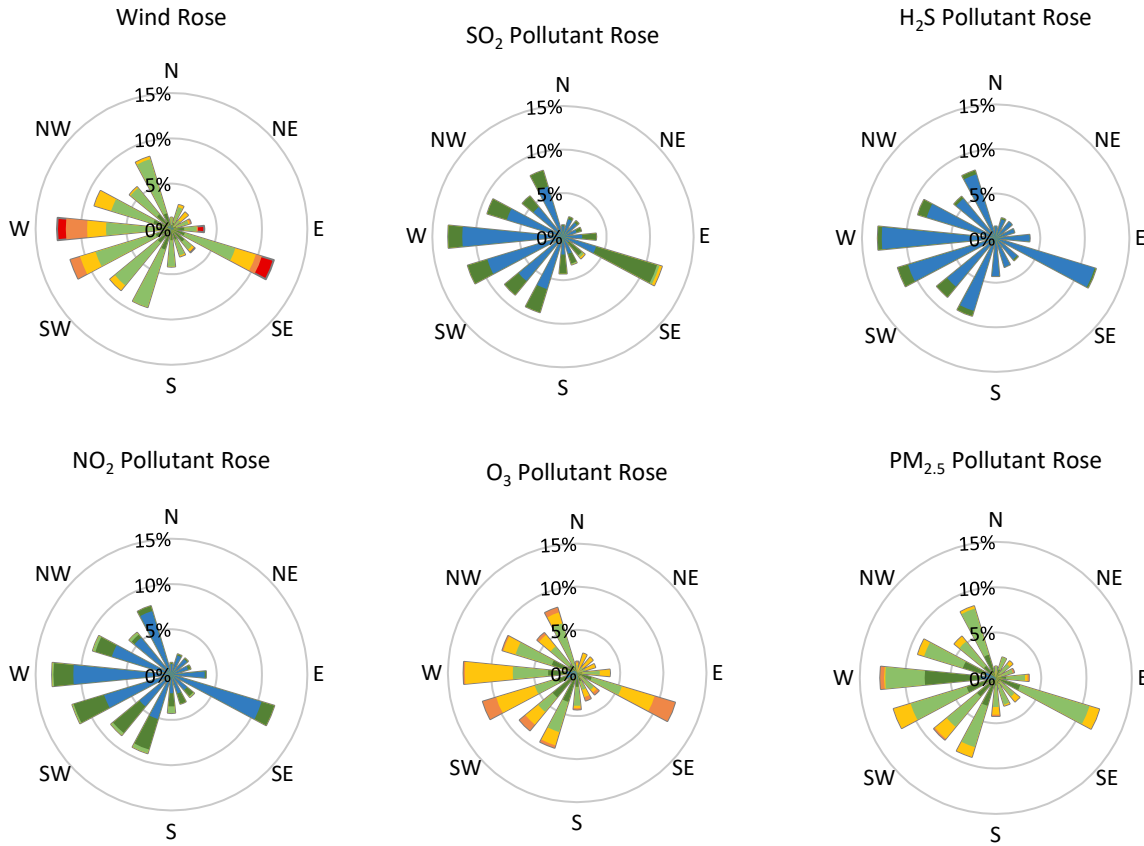
Pollutants		Month Records		24-Hour Records				1-Hour Records			
Name	Conc. Unit	Avg. Conc.	Total Uptime	Maximum		SAAQS Standard	Exceed Days	Maximum		SAAQS Standard	Exceed Hours
				Conc.	Time			Conc.	Time		
NO	ppb	0.5	96%	1.5	Jun-19	-	-	8.9	Jun-19 00:00	-	-
NO <sub>2</sub>	ppb	3.8	96%	7.9	Jun-03	106	0	29.7	Jun-07 23:00	159	0
NO <sub>x</sub>	ppb	3.9	96%	8.2	Jun-03	-	-	29.0	Jun-07 23:00	-	-
SO <sub>2</sub>	ppb	1.1	96%	3.6	Jun-28	48	0	16.0	Jun-28 19:00	172	0
H <sub>2</sub> S	ppb	0.6	96%	0.8	Jun-04	3.6	0	1.6	Jun-04 04:00	11	0
O <sub>3</sub>	ppb	34.4	96%	55.7	Jun-15	-	-	74.5	Jun-15 18:00	82	0
PM <sub>2.5</sub>	µg/m <sup>3</sup>	6.0	100%	11.2	Jun-05	28	0	26.1	Jun-04 21:00	-	-

SAAQS: Saskatchewan Ambient Air Quality Standards



\* colored lines indicate 1-hr concentration data for all parameters; solid black lines indicate 24-hr concentrations for PM<sub>2.5</sub>, NO<sub>2</sub>, SO<sub>2</sub>, and H<sub>2</sub>S

**GPAZ Pense Station - June 2021 Summary Report**



Parameters	Unit	Color Code for Wind Speed and Pollution Concentration Class						
		0.3 ≤ WS < 1.4	1.4 ≤ WS < 3.1	3.1 ≤ WS < 7.8	7.8 ≤ WS < 10.8	10.8 ≤ WS < 13.6	WS ≥ 13.6	
SO <sub>2</sub>	ppb	0 ≤ C < 1	1 ≤ C < 5	5 ≤ C < 10	10 ≤ C < 57	57 ≤ C < 172	C ≥ 172	
NO <sub>2</sub>	ppb	0 ≤ C < 5	5 ≤ C < 15	15 ≤ C < 30	30 ≤ C < 100	100 ≤ C < 212	C ≥ 212	
H <sub>2</sub> S	ppb	0 ≤ C < 1	1 ≤ C < 3.6	3.6 ≤ C < 5	5 ≤ C < 8	8 ≤ C < 10.8	C ≥ 10.8	
O <sub>3</sub>	ppb	0 ≤ C < 10	10 ≤ C < 20	20 ≤ C < 40	40 ≤ C < 60	60 ≤ C < 82	C ≥ 82	
PM <sub>2.5</sub>	µg/m <sup>3</sup>	0 ≤ C < 2	2 ≤ C < 4	4 ≤ C < 10	10 ≤ C < 20	20 ≤ C < 30	C ≥ 30	

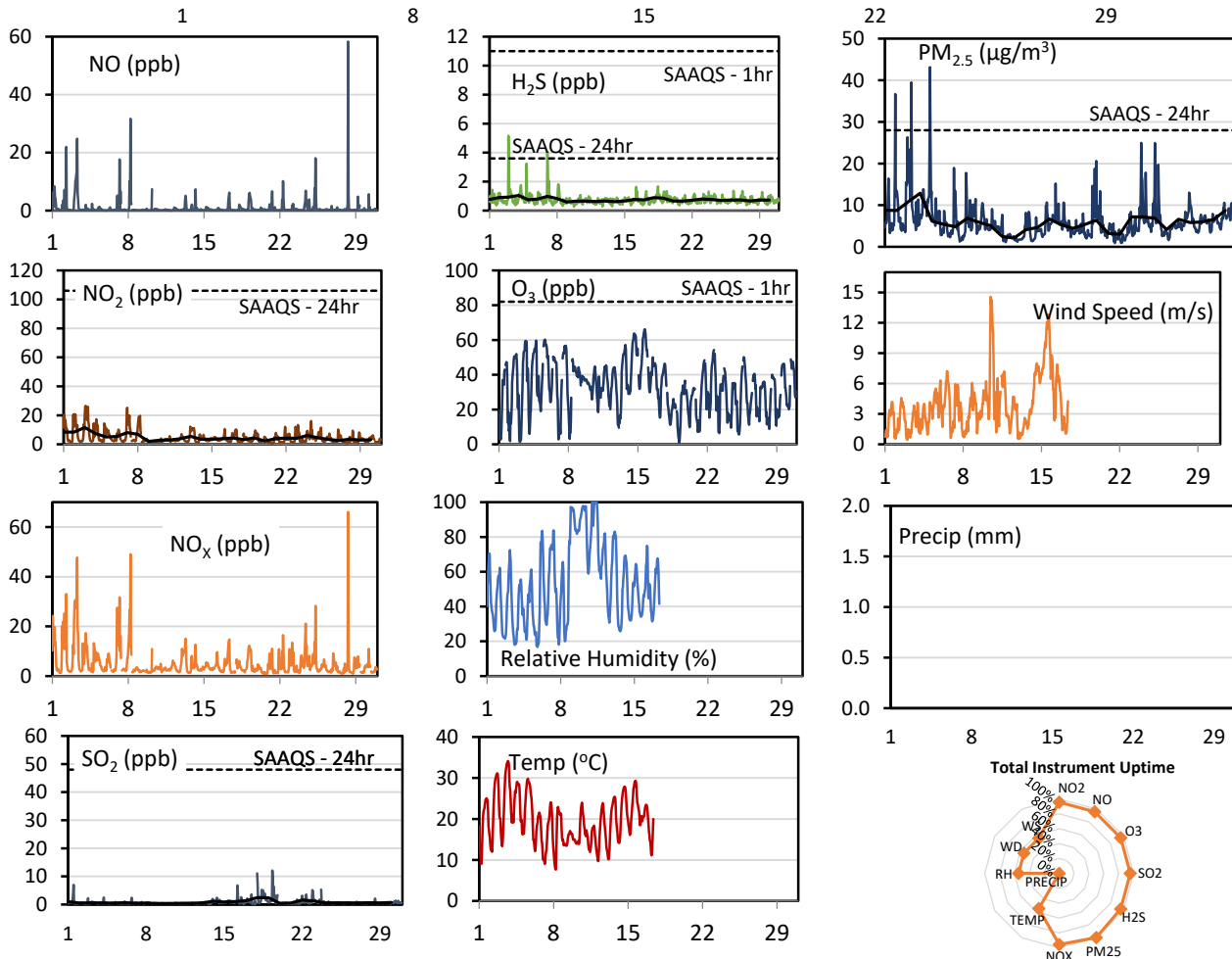
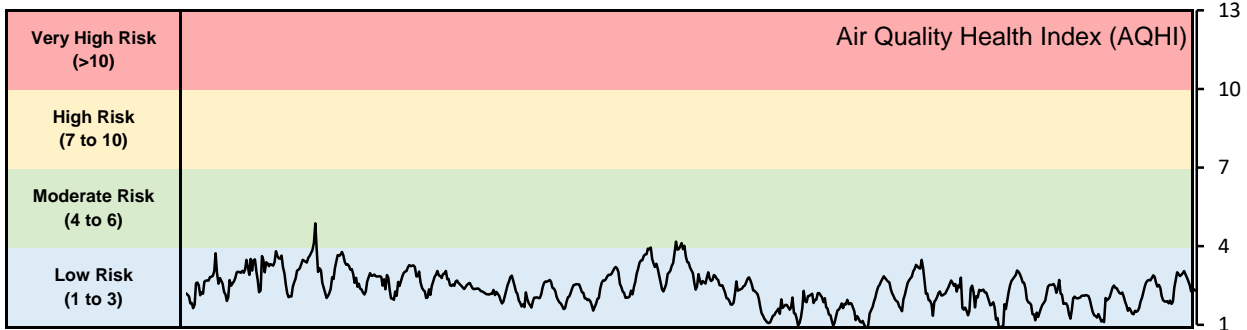
**Monthly Update**

- Achieved > 96% of scheduled uptime for all parameters
- Downtime of <4% due to routine daily internal zeroes and spans

## GPAZ Regina Station - June 2021 Summary Report

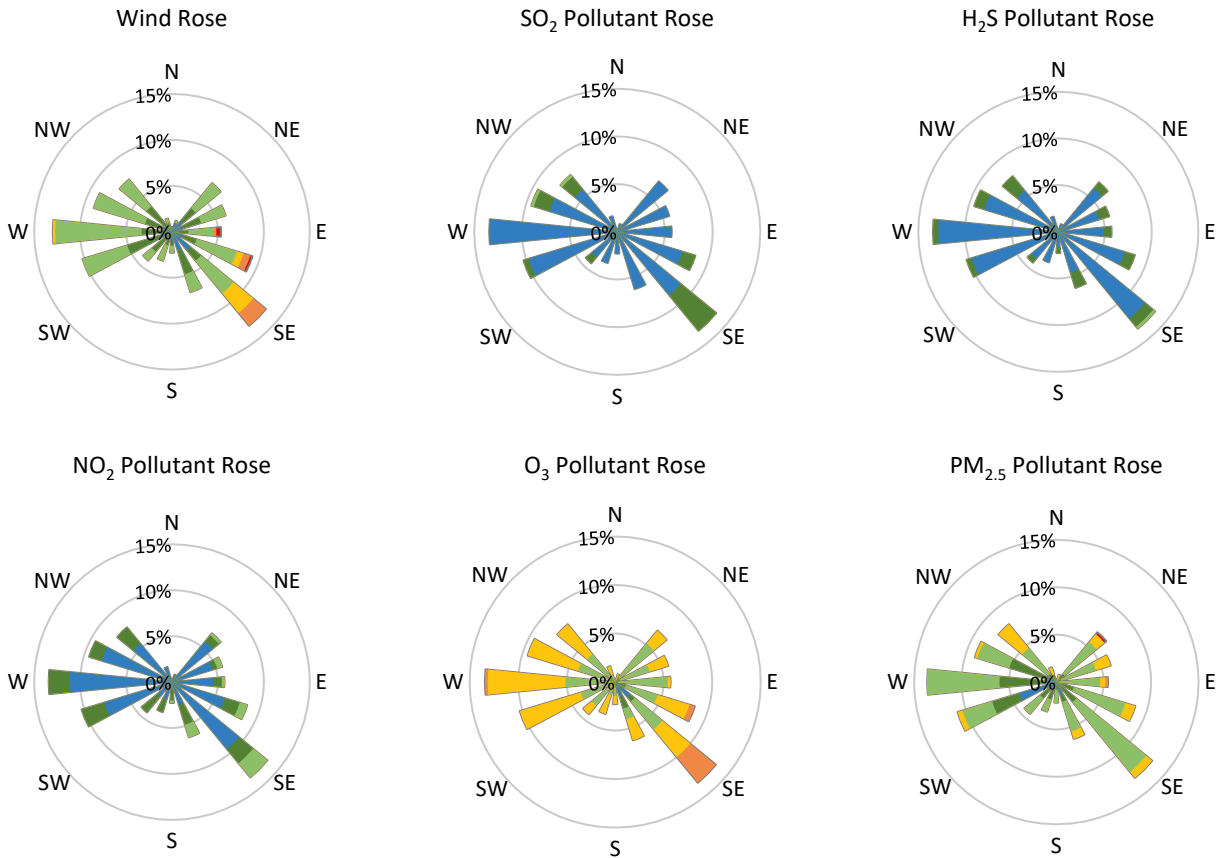
Pollutants		Month Records		24-Hour Records				1-Hour Records			
Name	Conc. Unit	Avg. Conc.	Total Uptime	Maximum		SAAQS Standard	Exceed Days	Maximum		SAAQS Standard	Exceed Hours
				Conc.	Time			Conc.	Time		
NO	ppb	1.0	96%	4.4	Jun-03	-	-	58.3	Jun-28 07:00	-	-
NO <sub>2</sub>	ppb	4.7	96%	11.6	Jun-03	106	0	26.5	Jun-03 02:00	159	0
NO <sub>x</sub>	ppb	5.1	96%	14.7	Jun-03	-	-	66.0	Jun-28 07:00	-	-
SO <sub>2</sub>	ppb	0.8	96%	2.5	Jun-18	48	0	12.1	Jun-19 08:00	172	0
H <sub>2</sub> S	ppb	0.8	96%	1.0	Jun-04	3.6	0	5.2	Jun-02 23:00	11	0
O <sub>3</sub>	ppb	32.5	96%	51.6	Jun-15	-	-	66.1	Jun-15 17:00	82	0
PM <sub>2.5</sub>	µg/m <sup>3</sup>	6.1	100%	12.9	Jun-04	28	0	43.1	Jun-04 20:00	-	-

SAAQS: Saskatchewan Ambient Air Quality Standards



\* colored lines indicate 1-hr concentration data for all parameters; solid black lines indicate 24-hr concentrations for PM<sub>2.5</sub>, NO<sub>2</sub>, SO<sub>2</sub>, and H<sub>2</sub>S

**GPAZ Regina Station - June 2021 Summary Report**



Parameters	Unit	Color Code for Wind Speed and Pollution Concentration Class					
		0.3 ≤ WS < 1.4	1.4 ≤ WS < 3.1	3.1 ≤ WS < 7.8	7.8 ≤ WS < 10.8	10.8 ≤ WS < 13.6	WS ≥ 13.6
SO <sub>2</sub>	ppb	0 ≤ C < 1	1 ≤ C < 5	5 ≤ C < 10	10 ≤ C < 57	57 ≤ C < 172	C ≥ 172
NO <sub>2</sub>	ppb	0 ≤ C < 5	5 ≤ C < 15	15 ≤ C < 30	30 ≤ C < 100	100 ≤ C < 212	C ≥ 212
H <sub>2</sub> S	ppb	0 ≤ C < 1	1 ≤ C < 3.6	3.6 ≤ C < 5	5 ≤ C < 8	8 ≤ C < 10.8	C ≥ 10.8
O <sub>3</sub>	ppb	0 ≤ C < 10	10 ≤ C < 20	20 ≤ C < 40	40 ≤ C < 60	60 ≤ C < 82	C ≥ 82
PM <sub>2.5</sub>	µg/m <sup>3</sup>	0 ≤ C < 2	2 ≤ C < 4	4 ≤ C < 10	10 ≤ C < 20	20 ≤ C < 30	C ≥ 30

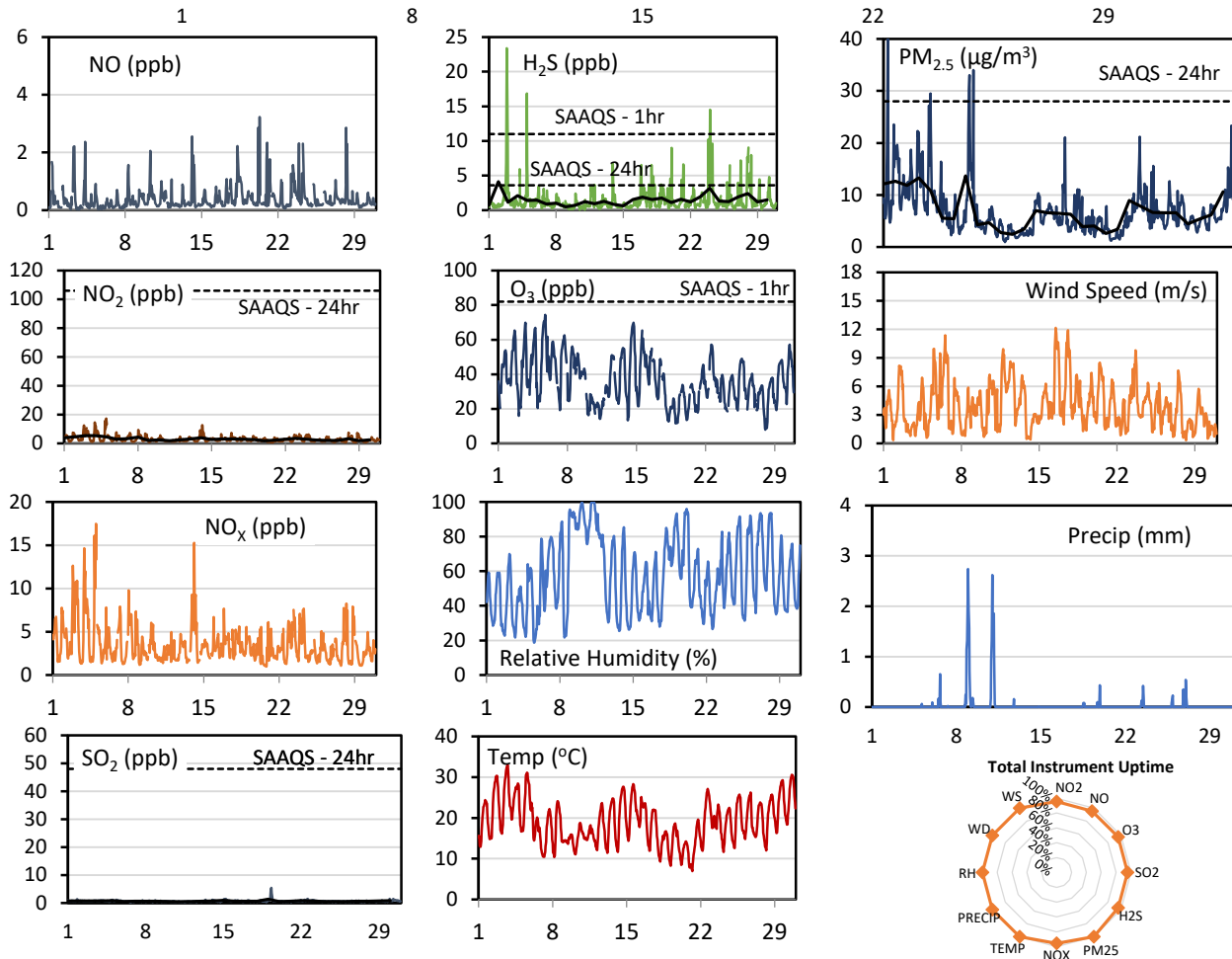
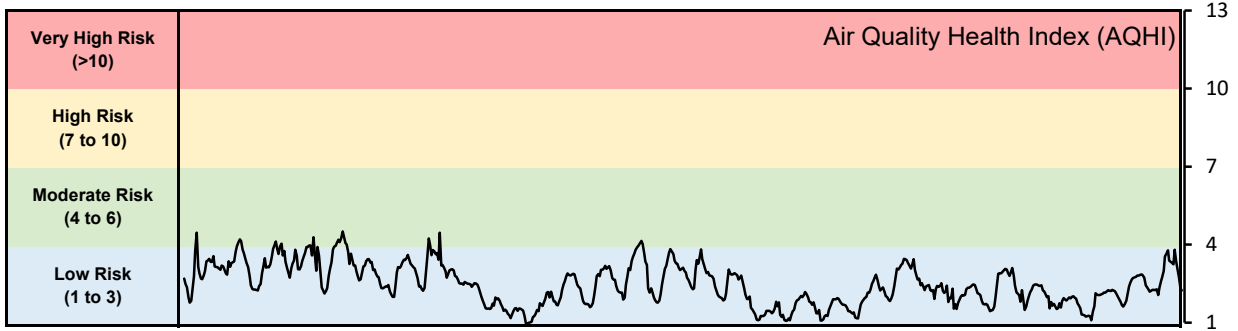
**Monthly Update**

- Achieved > 95% of scheduled uptime for all parameters except weather ( 54%)
- Downtime of <5% due to routine daily internal zeroes and spans
- Downtime of 46% for weather due to instrument removed for calibration due to sensor failure

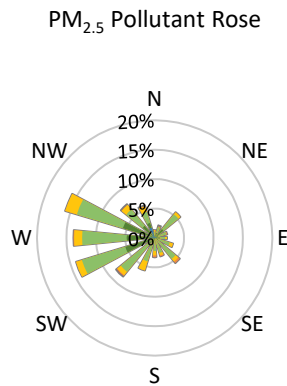
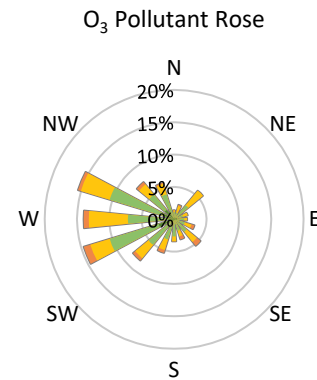
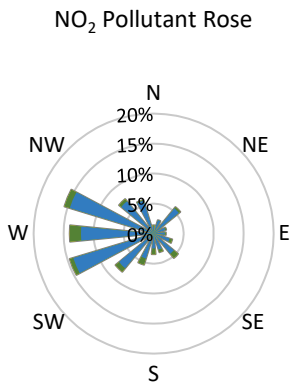
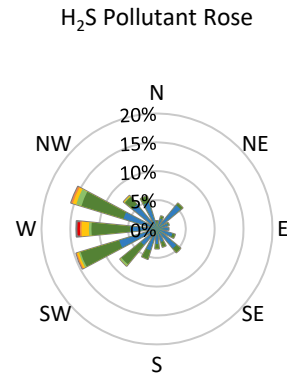
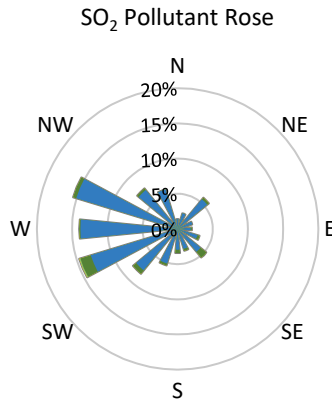
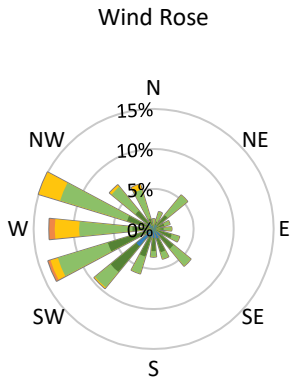
## GPAZ Yorkton Station - June 2021 Summary Report

Pollutants		Month Records		24-Hour Records				1-Hour Records			
Name	Conc. Unit	Avg. Conc.	Total Uptime	Maximum		SAAQS Standard	Exceed Days	Maximum		SAAQS Standard	Exceed Hours
				Conc.	Time			Conc.	Time		
NO	ppb	0.4	96%	0.8	Jun-18	-	-	3.2	Jun-20 08:00	-	-
NO <sub>2</sub>	ppb	3.0	96%	5.4	Jun-03	106	0	17.2	Jun-05 00:00	159	0
NO <sub>x</sub>	ppb	3.4	96%	5.8	Jun-03	-	-	17.5	Jun-05 00:00	-	-
SO <sub>2</sub>	ppb	0.7	96%	1.4	Jun-19	48	0	5.4	Jun-19 07:00	172	0
H <sub>2</sub> S	ppb	1.5	96%	4.1	Jun-02	3.6	1	23.4	Jun-02 21:00	11	5
O <sub>3</sub>	ppb	36.3	96%	49.7	Jun-05	-	-	74.4	Jun-05 18:00	82	0
PM <sub>2.5</sub>	µg/m <sup>3</sup>	6.9	100%	13.7	Jun-08	28	0	40.2	Jun-01 09:00	-	-

SAAQS: Saskatchewan Ambient Air Quality Standards



\* colored lines indicate 1-hr concentration data for all parameters; solid black lines indicate 24-hr concentrations for PM<sub>2.5</sub>, NO<sub>2</sub>, SO<sub>2</sub>, and H<sub>2</sub>S



Parameters	Unit	Color Code for Wind Speed and Pollution Concentration Class					
		0.3 ≤ WS < 1.4	1.4 ≤ WS < 3.1	3.1 ≤ WS < 7.8	7.8 ≤ WS < 10.8	10.8 ≤ WS < 13.6	WS ≥ 13.6
SO <sub>2</sub>	ppb	0 ≤ C < 1	1 ≤ C < 5	5 ≤ C < 10	10 ≤ C < 57	57 ≤ C < 172	C ≥ 172
NO <sub>2</sub>	ppb	0 ≤ C < 5	5 ≤ C < 15	15 ≤ C < 30	30 ≤ C < 100	100 ≤ C < 212	C ≥ 212
H <sub>2</sub> S	ppb	0 ≤ C < 1	1 ≤ C < 3.6	3.6 ≤ C < 5	5 ≤ C < 8	8 ≤ C < 10.8	C ≥ 10.8
O <sub>3</sub>	ppb	0 ≤ C < 10	10 ≤ C < 20	20 ≤ C < 40	40 ≤ C < 60	60 ≤ C < 82	C ≥ 82
PM <sub>2.5</sub>	µg/m <sup>3</sup>	0 ≤ C < 2	2 ≤ C < 4	4 ≤ C < 10	10 ≤ C < 20	20 ≤ C < 30	C ≥ 30

**Monthly Update**

- Achieved > 96% of scheduled uptime for all parameters
- Downtime of <5% due to routine daily internal zeroes and spans

**GPAZ Yorkton Station - June 2021 Summary Report**

**Exceedance Summary (1- Hour Average - Exceedances Highlighted)**

Exceedance Time	AQHI	NO <sub>2</sub>	NO	SO <sub>2</sub>	O <sub>3</sub>	NO <sub>x</sub>	H <sub>2</sub> S	PM <sub>2.5</sub>	Temp	WD	WS
	-	ppb	ppb	ppb	ppb	ppb	ppb	µg/m <sup>3</sup>	°C	deg	m/s
Jun-02 20:00	3.5	9.2	0.2	0.7	41.6	9.3	15.2	10.8	27.6	271.6	2.8
Jun-02 21:00	3.3	12.5	0.1	0.9	34.3	12.6	23.4	9.4	25.8	273.2	2.3
Jun-02 22:00	3.1	10.0	0.1	0.9	34.2	10.1	15.6	10.9	24.2	262.8	2.6
Jun-04 23:00	3.0	11.7	0.2	0.9	24.4	11.9	16.9	15.7	18.3	210.5	0.7
Jun-24 01:00	2.3	5.8	0.3	0.6	21.1	6.1	14.5	15.6	14.6	277.6	3.0

**Exceedance Summary (24- Hour Average - Exceedances Highlighted)**

Exceedance Time	AQHI	NO <sub>2</sub>	NO	SO <sub>2</sub>	O <sub>3</sub>	NO <sub>x</sub>	H <sub>2</sub> S	PM <sub>2.5</sub>	Temp	WD	WS
	-	ppb	ppb	ppb	ppb	ppb	ppb	µg/m <sup>3</sup>	°C	deg	m/s
Jun-04	3.4	4.6	0.3	0.7	46.4	4.8	4.1	12.7	23.2	245.6	4.7