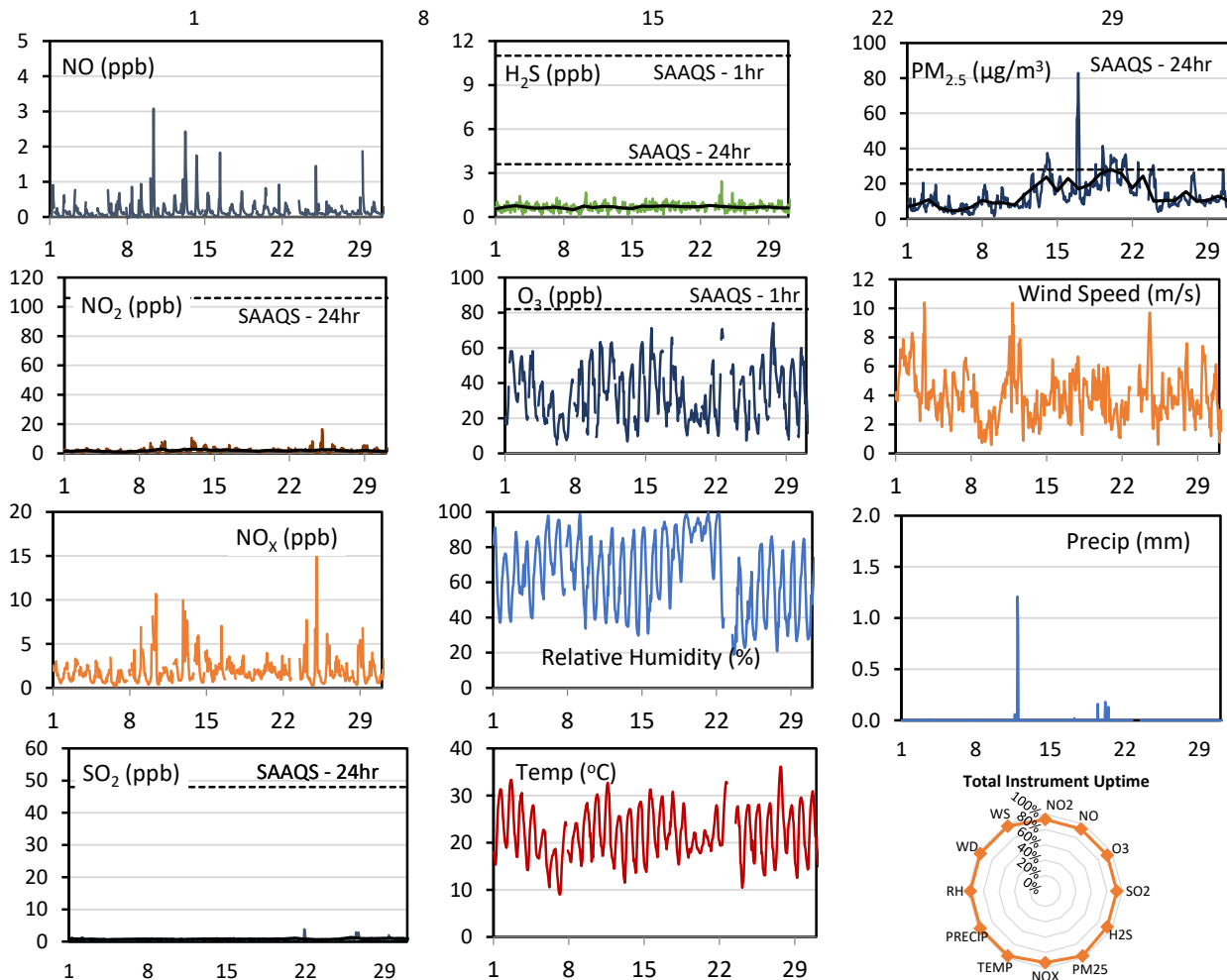
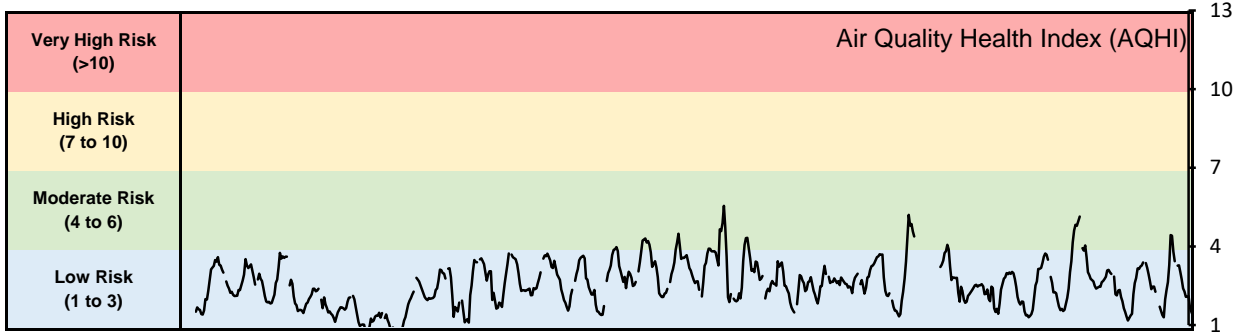


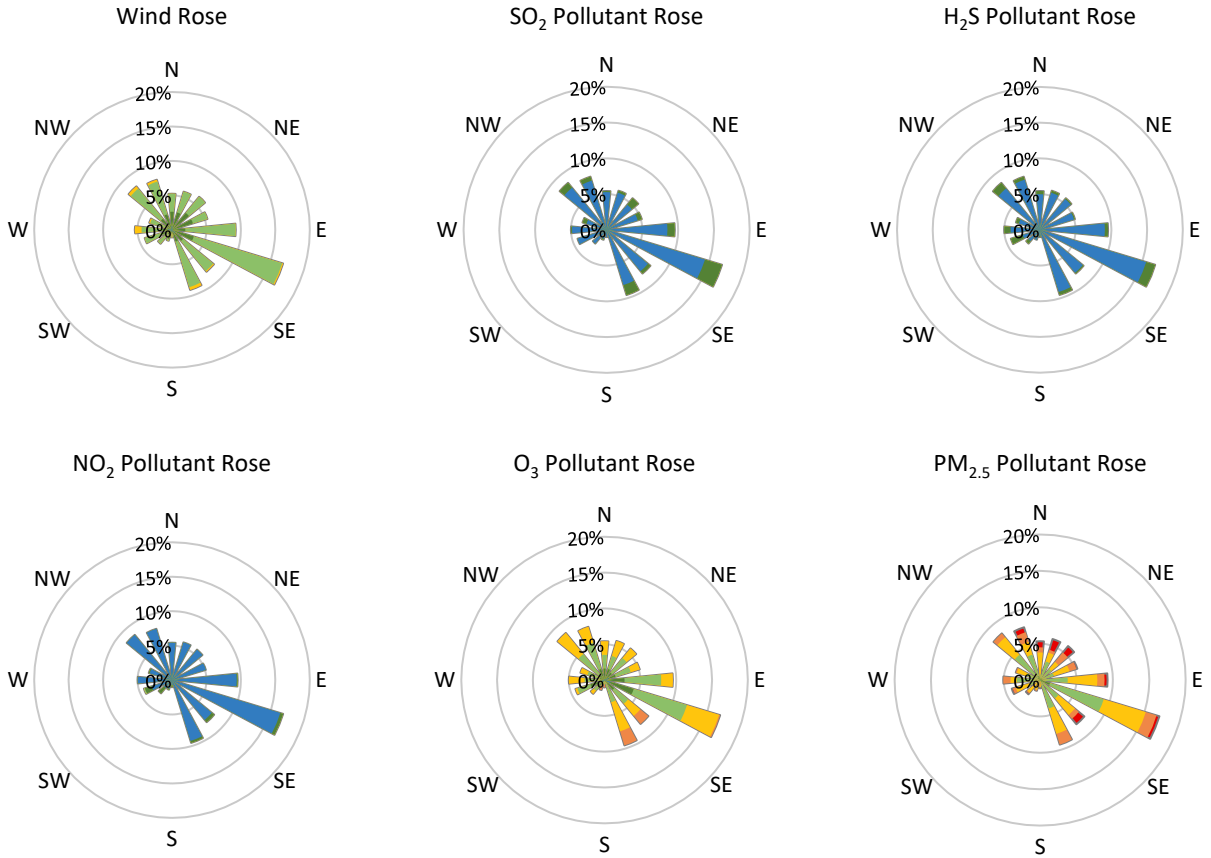
GPAZ Pense Station - July 2021 Summary Report

Pollutants		Month Records		24-Hour Records				1-Hour Records			
Name	Conc. Unit	Avg. Conc.	Total Uptime	Maximum		SAAQS Standard	Exceed Days	Maximum		SAAQS Standard	Exceed Hours
				Conc.	Time			Conc.	Time		
NO	ppb	0.2	93%	0.4	Jul-10	-	-	3.1	Jul-10 09:00	-	-
NO ₂	ppb	1.9	93%	3.0	Jul-10	106	0	16.6	Jul-25 01:00	159	0
NO _x	ppb	1.9	93%	3.1	Jul-10	-	-	16.5	Jul-25 01:00	-	-
SO ₂	ppb	0.8	93%	1.3	Jul-26	48	0	3.8	Jul-21 21:00	172	0
H ₂ S	ppb	0.7	93%	0.8	Jul-23	3.6	0	2.4	Jul-24 04:00	11	0
O ₃	ppb	33.7	93%	47.3	Jul-11	-	-	74.1	Jul-27 17:00	82	0
PM _{2.5}	µg/m ³	13.6	97%	28.0	Jul-20	28	0	82.9	Jul-16 23:00	-	-

SAAQS: Saskatchewan Ambient Air Quality Standards



* colored lines indicate 1-hr concentration data for all parameters; solid black lines indicate 24-hr concentrations for PM_{2.5}, NO₂, SO₂, and H₂S



Parameters	Unit	Color Code for Wind Speed and Pollution Concentration Class						
		$0.3 \leq WS < 1.4$	$1.4 \leq WS < 3.1$	$3.1 \leq WS < 7.8$	$7.8 \leq WS < 10.8$	$10.8 \leq WS < 13.6$	$WS \geq 13.6$	
SO ₂	ppb	$0 \leq C < 1$	$1 \leq C < 5$	$5 \leq C < 10$	$10 \leq C < 57$	$57 \leq C < 172$	$C \geq 172$	
NO ₂	ppb	$0 \leq C < 5$	$5 \leq C < 15$	$15 \leq C < 30$	$30 \leq C < 100$	$100 \leq C < 212$	$C \geq 212$	
H ₂ S	ppb	$0 \leq C < 1$	$1 \leq C < 3.6$	$3.6 \leq C < 5$	$5 \leq C < 8$	$8 \leq C < 10.8$	$C \geq 10.8$	
O ₃	ppb	$0 \leq C < 10$	$10 \leq C < 20$	$20 \leq C < 40$	$40 \leq C < 60$	$60 \leq C < 82$	$C \geq 82$	
PM _{2.5}	$\mu\text{g}/\text{m}^3$	$0 \leq C < 2$	$2 \leq C < 4$	$4 \leq C < 10$	$10 \leq C < 20$	$20 \leq C < 30$	$C \geq 30$	

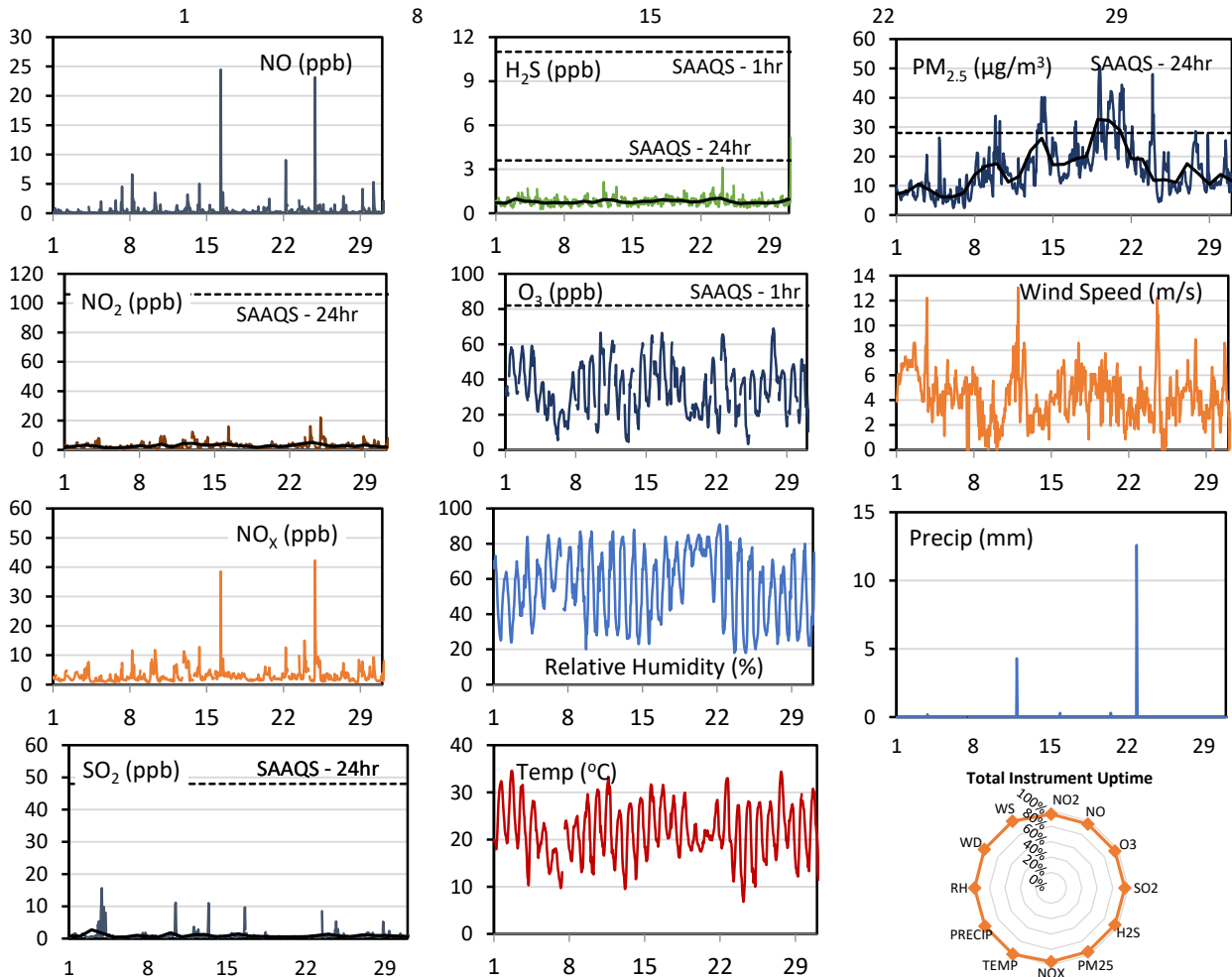
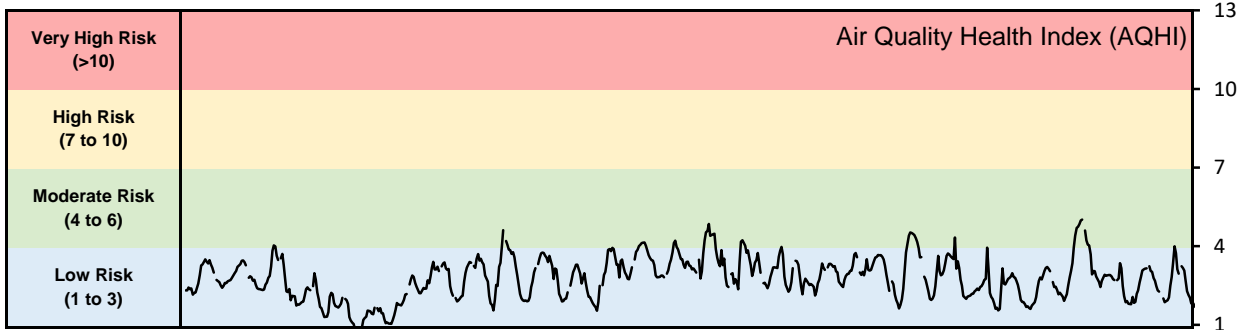
Monthly Update

- Achieved at least 93% of scheduled uptime for all parameters
- Downtime of <7% due to routine daily internal zeroes and spans, and a power outage
- Forest fires contributed to elevated particulate levels

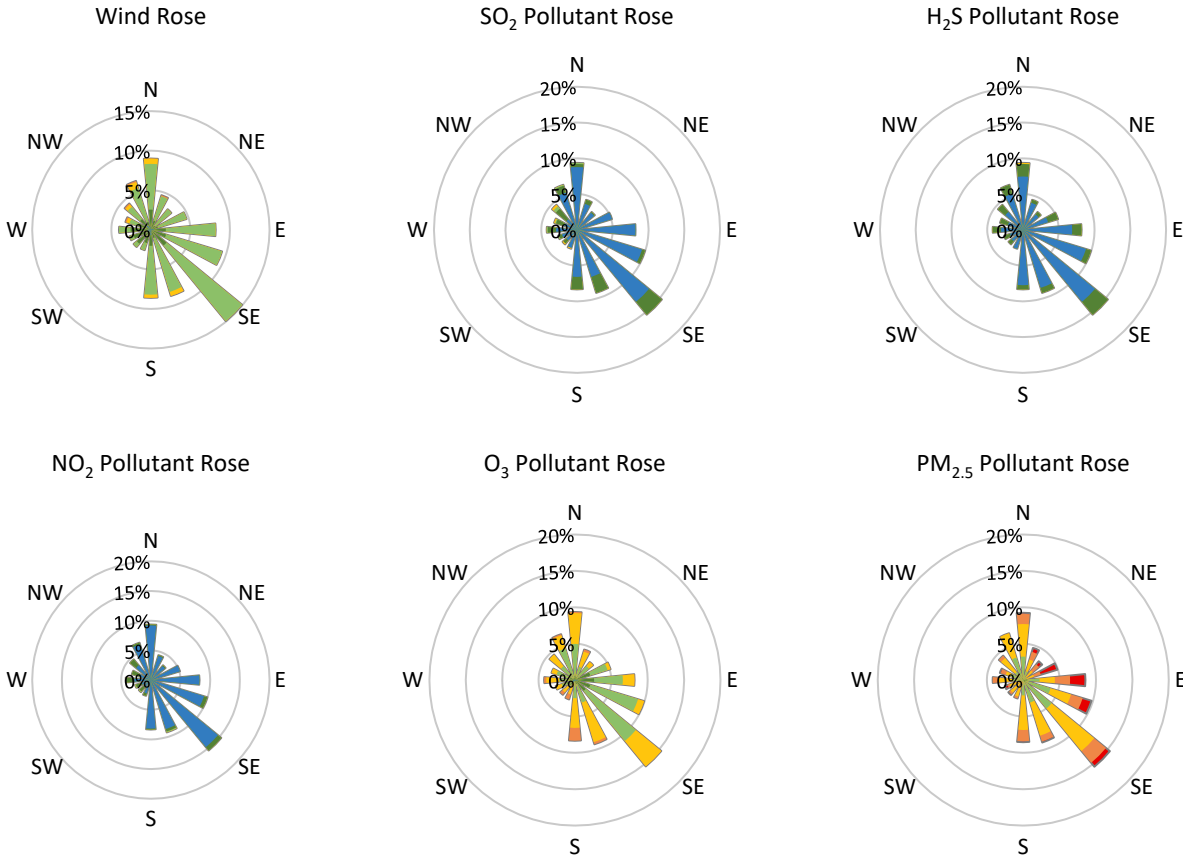
GPAZ Regina Station - July 2020 Summary Report

Pollutants		Month Records		24-Hour Records				1-Hour Records			
Name	Conc. Unit	Avg. Conc.	Total Uptime	Maximum		SAAQS Standard	Exceed Days	Maximum		SAAQS Standard	Exceed Hours
				Conc.	Time			Conc.	Time		
NO	ppb	0.5	96%	1.7	Jul-16	-	-	24.5	Jul-16 07:00	-	-
NO ₂	ppb	2.8	96%	5.0	Jul-24	106	0	22.1	Jul-24 21:00	159	0
NO _x	ppb	3.0	96%	5.8	Jul-24	-	-	42.3	Jul-24 21:00	-	-
SO ₂	ppb	0.9	96%	2.7	Jul-03	48	0	15.6	Jul-03 22:00	172	0
H ₂ S	ppb	0.8	96%	1.0	Jul-24	3.6	0	5.2	Jul-31 05:00	11	0
O ₃	ppb	34.5	96%	47.9	Jul-27	-	-	69.0	Jul-27 16:00	82	0
PM _{2.5}	µg/m ³	15.6	100%	32.6	Jul-19	28	3	50.8	Jul-19 04:00	-	-

SAAQS: Saskatchewan Ambient Air Quality Standards



* colored lines indicate 1-hr concentration data for all parameters; solid black lines indicate 24-hr concentrations for PM_{2.5}, NO₂, SO₂, and H₂S



Parameters	Unit	Color Code for Wind Speed and Pollution Concentration Class						
		0.3 ≤ WS < 1.4	1.4 ≤ WS < 3.1	3.1 ≤ WS < 7.8	7.8 ≤ WS < 10.8	10.8 ≤ WS < 13.6	WS ≥ 13.6	
SO ₂	ppb	0 ≤ C < 1	1 ≤ C < 5	5 ≤ C < 10	10 ≤ C < 57	57 ≤ C < 172	C ≥ 172	
NO ₂	ppb	0 ≤ C < 5	5 ≤ C < 15	15 ≤ C < 30	30 ≤ C < 100	100 ≤ C < 212	C ≥ 212	
H ₂ S	ppb	0 ≤ C < 1	1 ≤ C < 3.6	3.6 ≤ C < 5	5 ≤ C < 8	8 ≤ C < 10.8	C ≥ 10.8	
O ₃	ppb	0 ≤ C < 10	10 ≤ C < 20	20 ≤ C < 40	40 ≤ C < 60	60 ≤ C < 82	C ≥ 82	
PM _{2.5}	µg/m ³	0 ≤ C < 2	2 ≤ C < 4	4 ≤ C < 10	10 ≤ C < 20	20 ≤ C < 30	C ≥ 30	

Monthly Update

- Achieved > 96% of scheduled uptime for all parameters except weather (0%)
- Downtime of <4% due to routine daily internal zeroes and spans
- Weather data was taken from the Regina RCS station operated by ECCC - MSC while sensor out for calibration
- Forest fires contributed to elevated particulate levels

GPAZ Regina Station - July 2020 Summary Report

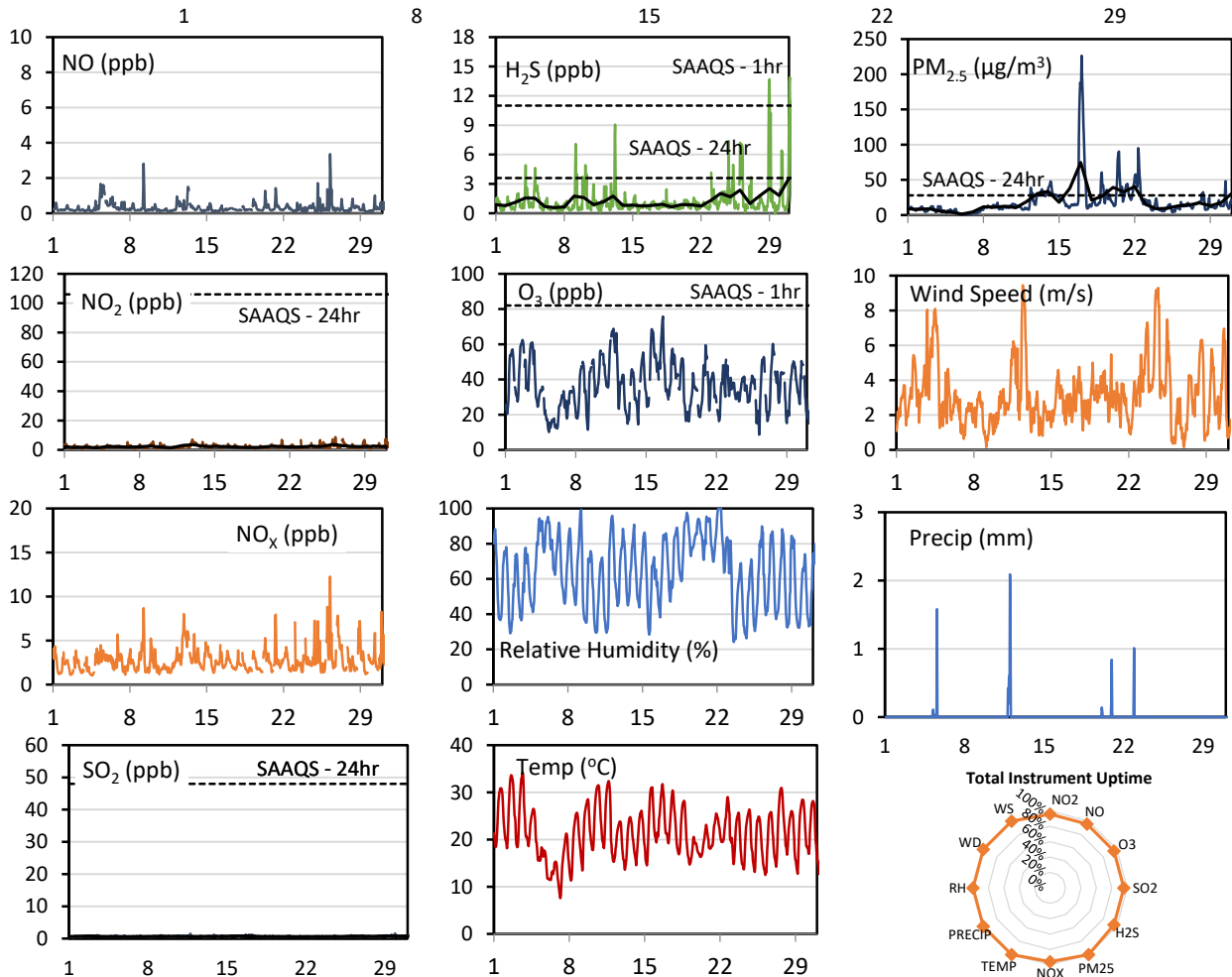
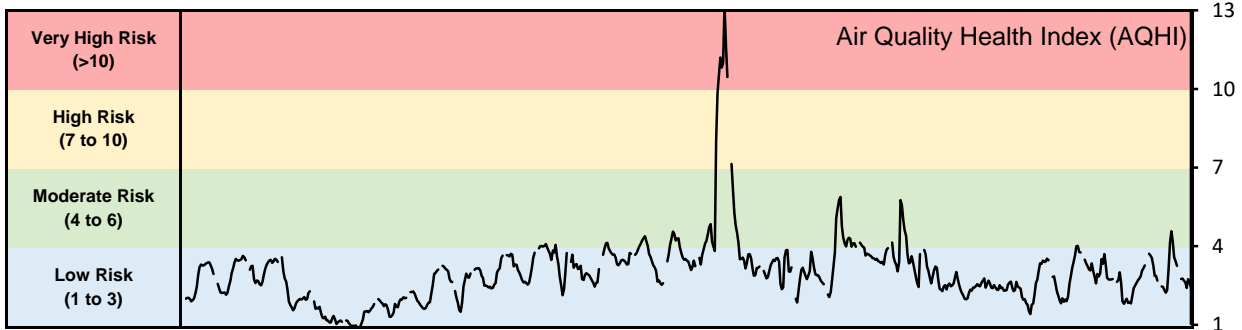
Exceedance Summary (24- Hour Average - Exceedances Highlighted)

Exceedance Time	AQHI -	NO ₂ ppb	NO ppb	SO ₂ ppb	O ₃ ppb	NO _x ppb	H ₂ S ppb	PM _{2.5} µg/m ³	Temp °C	WD deg	WS m/s
Jul-19	2.7	1.6	0.3	0.5	20.5	1.7	0.9	32.6	19.9	79.6	5.2
Jul-20	3.1	2.8	0.5	0.6	25.5	3.0	0.9	32.3	19.6	105.4	4.8
Jul-21	3.2	2.2	0.2	0.6	32.3	2.2	0.8	28.9	23.0	140.0	3.1

GPAZ Yorkton Station - July 2021 Summary Report

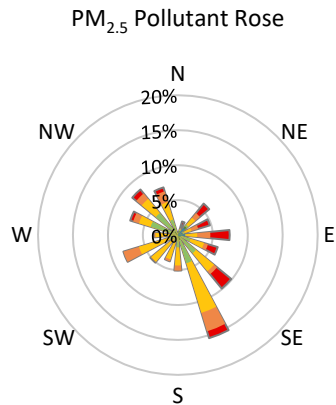
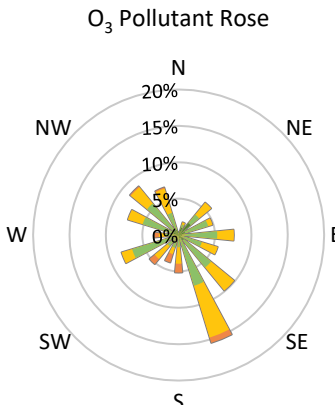
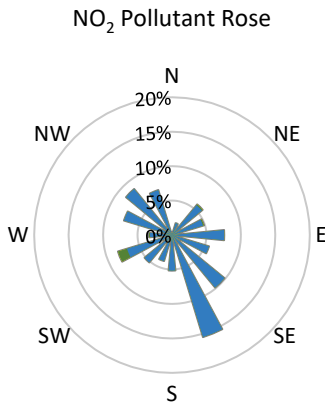
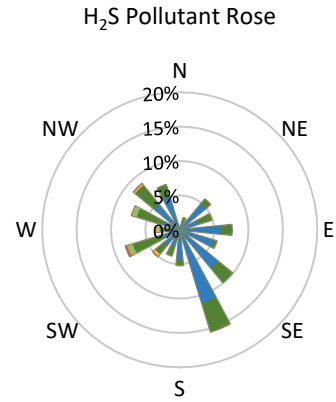
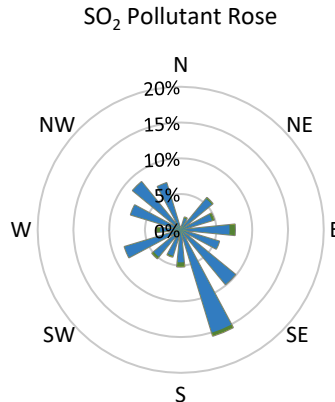
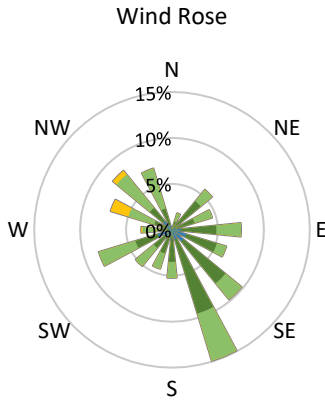
Pollutants		Month Records		24-Hour Records				1-Hour Records			
Name	Conc. Unit	Avg. Conc.	Total Uptime	Maximum		SAAQS Standard	Exceed Days	Maximum		SAAQS Standard	Exceed Hours
				Conc.	Time			Conc.	Time		
NO	ppb	0.3	96%	0.9	Jul-05	-	-	3.4	Jul-26 06:00	-	-
NO ₂	ppb	2.2	96%	3.7	Jul-26	106	0	8.7	Jul-26 06:00	159	0
NO _x	ppb	2.7	96%	4.5	Jul-26	-	-	12.3	Jul-26 06:00	-	-
SO ₂	ppb	0.7	96%	0.8	Jul-29	48	0	1.6	Jul-29 21:00	172	0
H ₂ S	ppb	1.3	96%	3.6	Jul-31	3.6	0	13.9	Jul-31 02:00	11	5
O ₃	ppb	36.5	96%	53.4	Jul-11	-	-	75.8	Jul-16 16:00	82	0
PM _{2.5}	µg/m ³	19.4	100%	74.7	Jul-17	28	8	226.4	Jul-17 02:00	-	-

SAAQS: Saskatchewan Ambient Air Quality Standards



* colored lines indicate 1-hr concentration data for all parameters; solid black lines indicate 24-hr concentrations for PM_{2.5}, NO₂, SO₂, and H₂S

GPAZ Yorkton Station - July 2021 Summary Report



Parameters	Unit	Color Code for Wind Speed and Pollution Concentration Class						
		0.3 ≤ WS < 1.4	1.4 ≤ WS < 3.1	3.1 ≤ WS < 7.8	7.8 ≤ WS < 10.8	10.8 ≤ WS < 13.6	WS ≥ 13.6	
SO ₂	ppb	0 ≤ C < 1	1 ≤ C < 5	5 ≤ C < 10	10 ≤ C < 57	57 ≤ C < 172	C ≥ 172	
NO ₂	ppb	0 ≤ C < 5	5 ≤ C < 15	15 ≤ C < 30	30 ≤ C < 100	100 ≤ C < 212	C ≥ 212	
H ₂ S	ppb	0 ≤ C < 1	1 ≤ C < 3.6	3.6 ≤ C < 5	5 ≤ C < 8	8 ≤ C < 10.8	C ≥ 10.8	
O ₃	ppb	0 ≤ C < 10	10 ≤ C < 20	20 ≤ C < 40	40 ≤ C < 60	60 ≤ C < 82	C ≥ 82	
PM _{2.5}	µg/m ³	0 ≤ C < 2	2 ≤ C < 4	4 ≤ C < 10	10 ≤ C < 20	20 ≤ C < 30	C ≥ 30	

Monthly Update

- Achieved at least 95% of scheduled uptime for all parameters
- Downtime of <5% due to routine daily internal zeroes and spans
- Forest fires contributed to elevated particulate levels

GPAZ Yorkton Station - July 2021 Summary Report

Exceedance Summary (1- Hour Average - Exceedances Highlighted)

Exceedance Time	AQHI	NO ₂	NO	SO ₂	O ₃	NO _x	H ₂ S	PM _{2.5}	Temp	WD	WS
	-	ppb	ppb	ppb	ppb	ppb	ppb	µg/m ³	°C	deg	m/s
Jul-28 23:00	1.9	6.8	0.2	0.8	16.0	7.2	13.1	10.8	16.5	238.7	0.8
Jul-29 00:00	1.8	5.2	0.2	0.8	15.1	5.7	13.7	12.4	15.6	247.2	0.9
Jul-31 01:00	2.1	3.7	0.2	0.8	18.1	4.2	13.5	17.3	15.4	253.7	0.8
Jul-31 02:00	2.1	3.9	0.2	0.9	19.5	4.4	13.9	16.7	15.1	281.7	0.8
Jul-31 05:00	2.2	5.1	0.3	0.8	15.1	5.6	11.5	20.8	12.7	241.4	1.1

Exceedance Summary (24- Hour Average - Exceedances Highlighted)

Exceedance Time	AQHI	NO ₂	NO	SO ₂	O ₃	NO _x	H ₂ S	PM _{2.5}	Temp	WD	WS
	-	ppb	ppb	ppb	ppb	ppb	ppb	µg/m ³	°C	deg	m/s
Jul-13	3.3	3.6	0.5	0.7	30.2	4.2	1.7	30.6	19.7	158.4	2.2
Jul-14	3.7	2.4	0.2	0.7	37.4	2.8	0.8	33.5	21.0	147.3	1.9
Jul-16	4.7	2.3	0.2	0.8	52.6	2.7	0.8	38.0	25.2	168.1	2.5
Jul-17	6.0	1.9	0.2	0.8	42.7	2.3	0.8	74.7	24.1	116.9	3.1
Jul-20	3.8	2.3	0.4	0.6	33.1	2.8	0.9	39.3	19.1	106.3	3.0
Jul-21	3.7	2.4	0.4	0.6	37.0	3.0	0.9	32.8	21.8	82.5	2.6
Jul-22	3.8	2.0	0.3	0.6	32.4	2.5	0.7	40.5	23.1	141.1	2.6
Jul-31	3.1	2.3	0.2	0.8	27.0	2.8	3.6	30.9	20.6	225.5	2.0