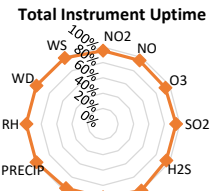
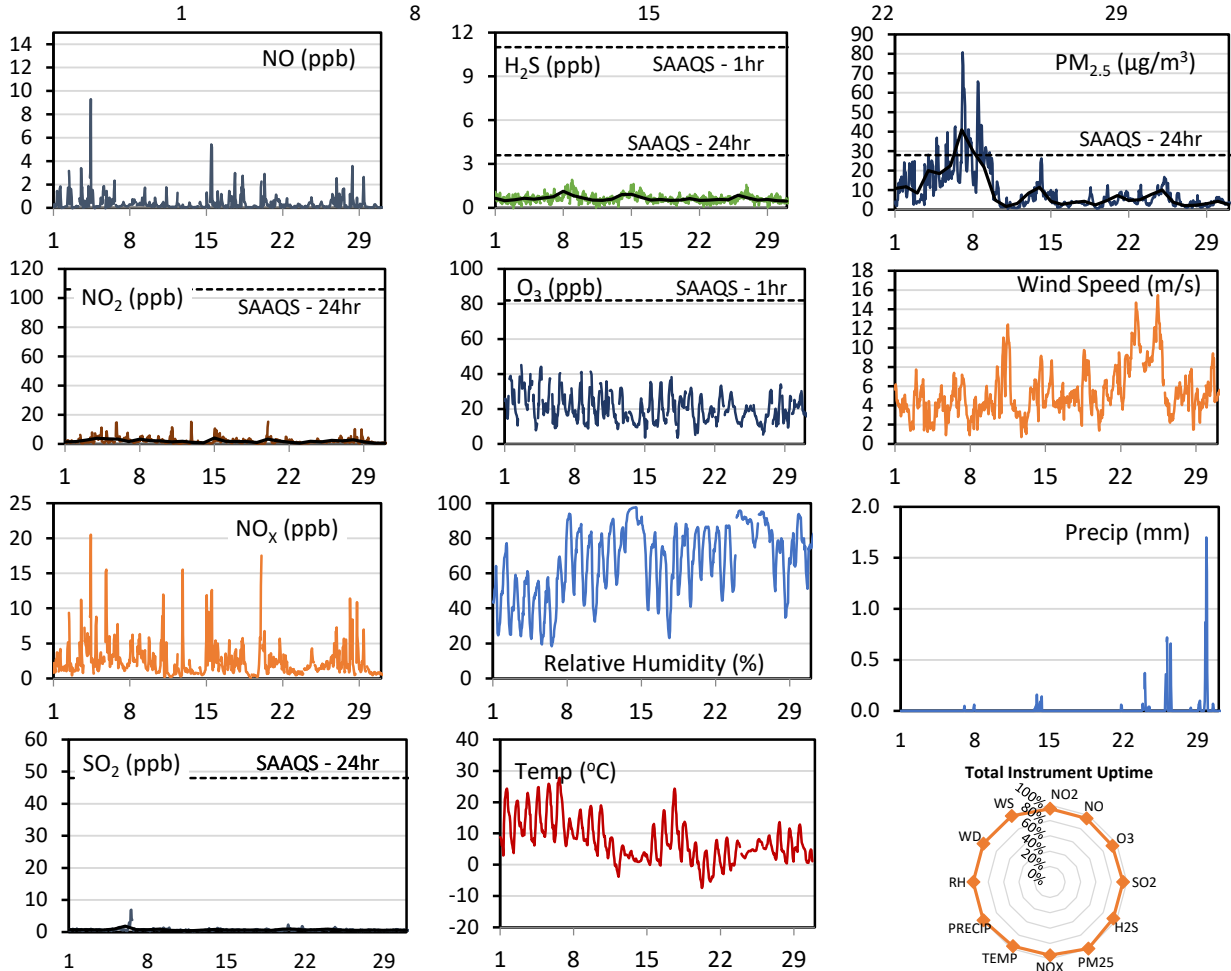
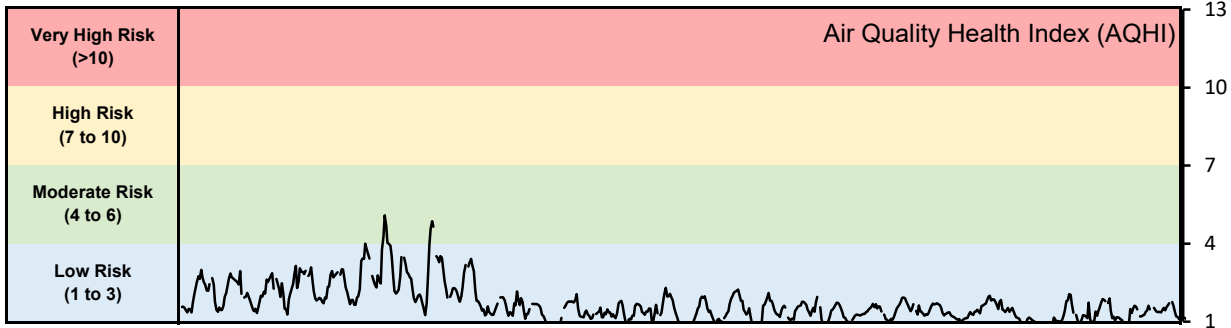


GPAZ Pense Station - October 2021 Summary Report

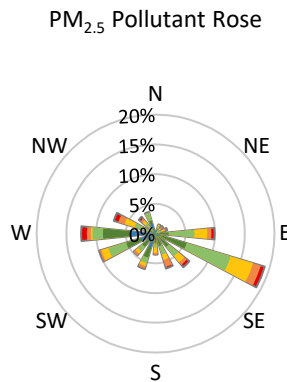
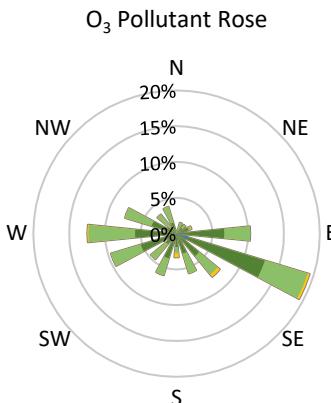
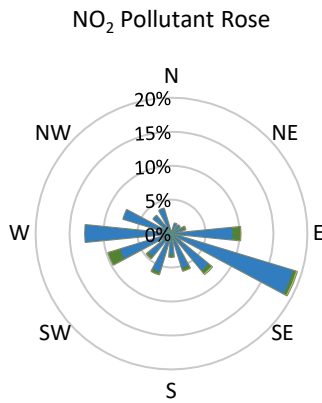
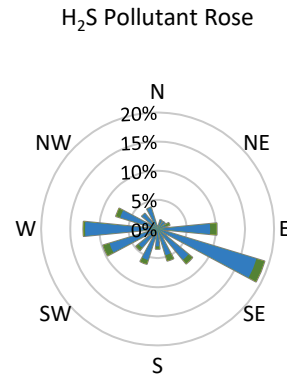
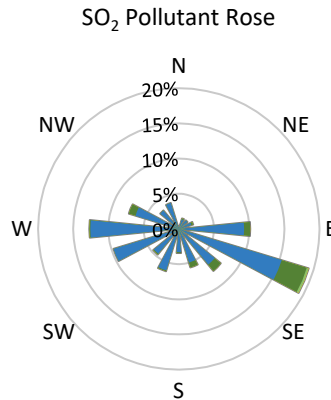
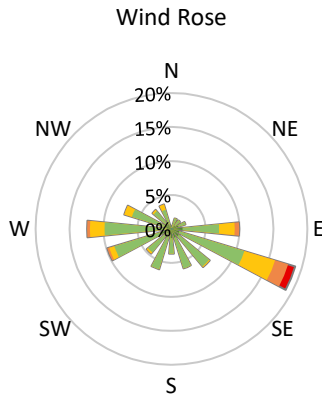
Pollutants		Month Records		24-Hour Records				1-Hour Records			
Name	Conc. Unit	Avg. Conc.	Total Uptime	Maximum		SAAQS Standard	Exceed Days	Maximum		SAAQS Standard	Exceed Hours
				Conc.	Time			Conc.	Time		
NO	ppb	0.4	95%	1.1	Oct-04	-	-	9.3	Oct-04 10:00	-	-
NO ₂	ppb	2.0	95%	4.1	Oct-15	106	0	15.2	Oct-20 01:00	159	0
NO _x	ppb	2.4	95%	5.1	Oct-15	-	-	20.5	Oct-04 10:00	-	-
SO ₂	ppb	0.7	95%	1.8	Oct-06	48	0	7.0	Oct-06 13:00	172	0
H ₂ S	ppb	0.6	95%	1.1	Oct-08	3.6	0	1.9	Oct-08 22:00	11	0
O ₃	ppb	20.4	94%	28.1	Oct-01	-	-	45.1	Oct-02 16:00	82	0
PM _{2.5}	µg/m ³	9.4	100%	41.0	Oct-07	28	2	80.8	Oct-07 02:00	-	-

SAAQS: Saskatchewan Ambient Air Quality Standards



* colored lines indicate 1-hr concentration data for all parameters; solid black lines indicate 24-hr concentrations for PM_{2.5}, NO₂, SO₂, and H₂S

GPAZ Pense Station - October 2021 Summary Report



Parameters	Unit	Color Code for Wind Speed and Pollution Concentration Class						
Wind Speed	m/s	$0.3 \leq WS < 1.4$	$1.4 \leq WS < 3.1$	$3.1 \leq WS < 7.8$	$7.8 \leq WS < 10.8$	$10.8 \leq WS < 13.6$	$WS \geq 13.6$	
SO ₂	ppb	$0 \leq C < 1$	$1 \leq C < 5$	$5 \leq C < 10$	$10 \leq C < 57$	$57 \leq C < 172$	$C \geq 172$	
NO ₂	ppb	$0 \leq C < 5$	$5 \leq C < 15$	$15 \leq C < 30$	$30 \leq C < 100$	$100 \leq C < 212$	$C \geq 212$	
H ₂ S	ppb	$0 \leq C < 1$	$1 \leq C < 3.6$	$3.6 \leq C < 5$	$5 \leq C < 8$	$8 \leq C < 10.8$	$C \geq 10.8$	
O ₃	ppb	$0 \leq C < 10$	$10 \leq C < 20$	$20 \leq C < 40$	$40 \leq C < 60$	$60 \leq C < 82$	$C \geq 82$	
PM _{2.5}	$\mu\text{g}/\text{m}^3$	$0 \leq C < 2$	$2 \leq C < 4$	$4 \leq C < 10$	$10 \leq C < 20$	$20 \leq C < 30$	$C \geq 30$	

Monthly Update

- Achieved at least 94% of scheduled uptime for all parameters
- Downtime of <6% due to routine daily internal zeroes and spans

GPAZ Pense Station - October 2021 Summary Report

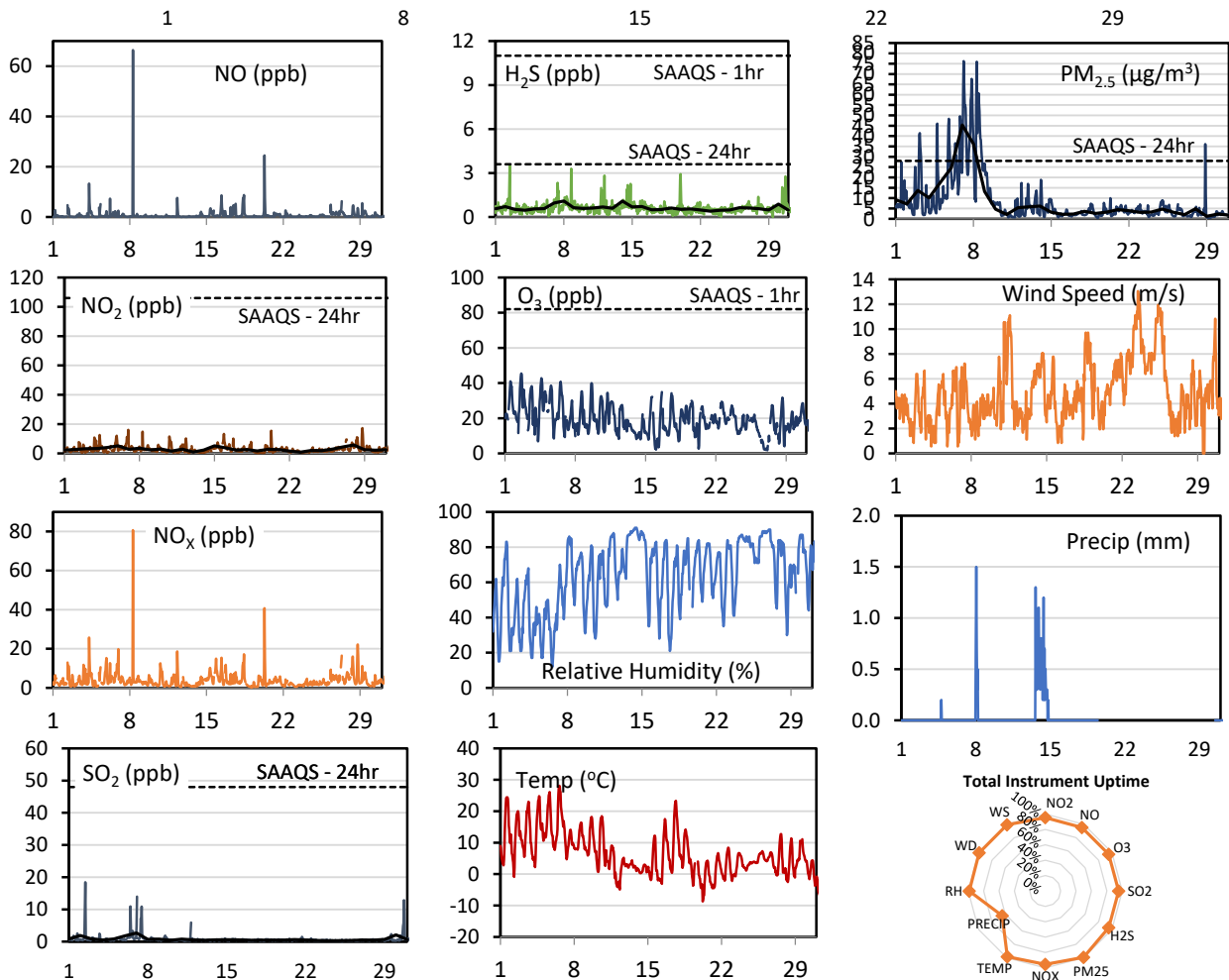
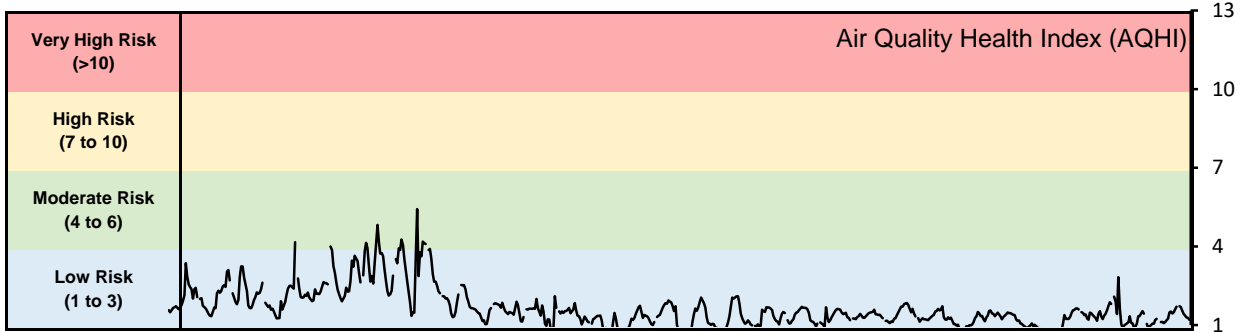
Exceedance Summary (24- Hour Average - Exceedances Highlighted)

Exceedance Time	AQHI	NO ₂	NO	SO ₂	O ₃	NO _x	H ₂ S	PM _{2.5}	Temp	WD	WS
	-	ppb	ppb	ppb	ppb	ppb	ppb	µg/m ³	°C	deg	m/s
Oct-07	3.2	1.7	0.2	0.7	20.7	1.9	0.8	41.0	10.9	282.5	4.5
Oct-08	2.8	3.2	0.4	0.7	21.0	3.6	1.1	30.0	11.6	112.9	3.1

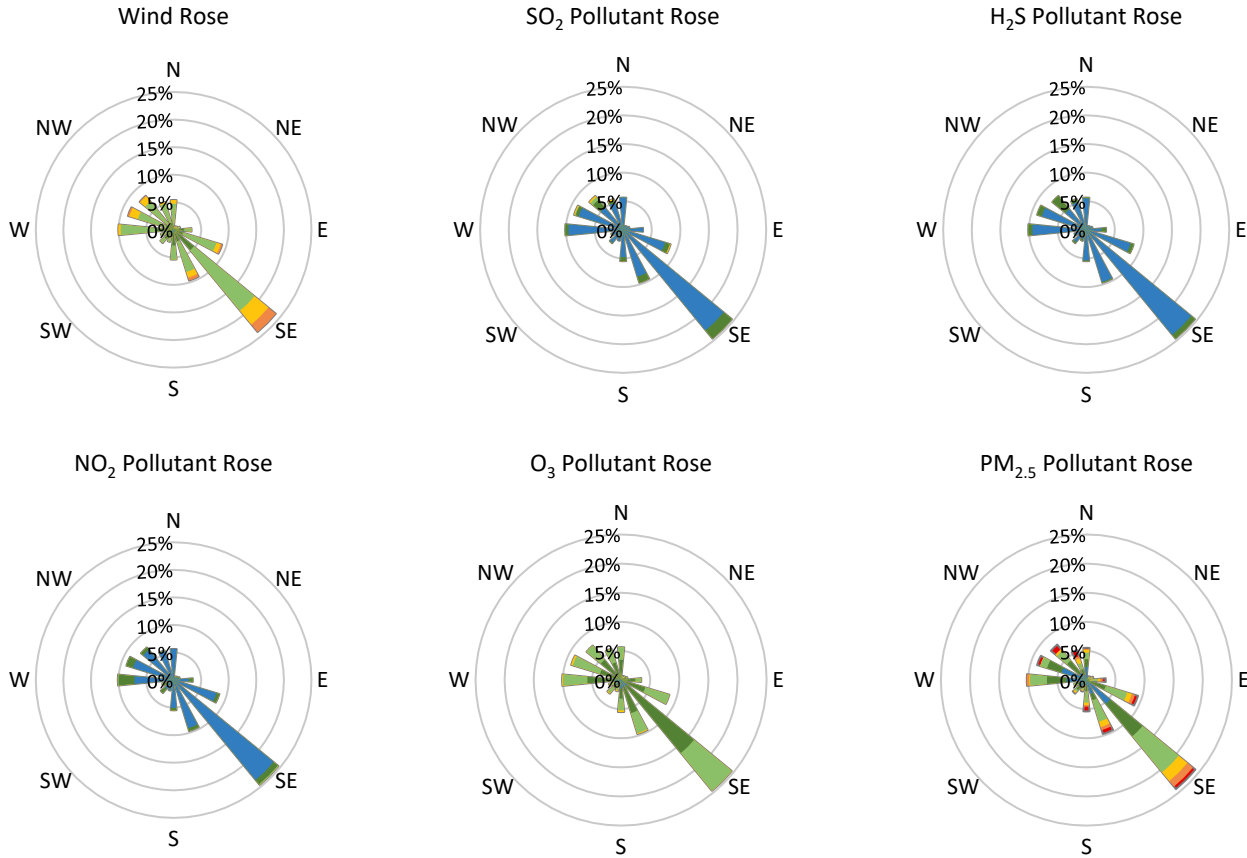
GPAZ Regina Station - October 2021 Summary Report

Pollutants		Month Records		24-Hour Records				1-Hour Records			
Name	Conc. Unit	Avg. Conc.	Total Uptime	Maximum		SAAQS Standard	Exceed Days	Maximum		SAAQS Standard	Exceed Hours
				Conc.	Time			Conc.	Time		
NO	ppb	0.8	95%	3.2	Oct-08	-	-	66.4	Oct-08 07:00	-	-
NO ₂	ppb	2.8	95%	5.7	Oct-28	106	0	17.3	Oct-28 19:00	159	0
NO _x	ppb	3.8	95%	7.4	Oct-28	-	-	80.7	Oct-08 07:00	-	-
SO ₂	ppb	0.7	95%	2.7	Oct-07	48	0	18.4	Oct-02 11:00	172	0
H ₂ S	ppb	0.6	95%	1.1	Oct-08	3.6	0	3.5	Oct-02 11:00	11	0
O ₃	ppb	19.6	95%	29.1	Oct-02	-	-	45.4	Oct-02 15:00	82	0
PM _{2.5}	µg/m ³	8.2	100%	45.4	Oct-07	28	2	76.2	Oct-07 03:00	-	-

SAAQS: Saskatchewan Ambient Air Quality Standards



* colored lines indicate 1-hr concentration data for all parameters; solid black lines indicate 24-hr concentrations for PM_{2.5}, NO₂, SO₂, and H₂S



Parameters	Unit	Color Code for Wind Speed and Pollution Concentration Class					
		$0.3 \leq WS < 1.4$	$1.4 \leq WS < 3.1$	$3.1 \leq WS < 7.8$	$7.8 \leq WS < 10.8$	$10.8 \leq WS < 13.6$	$WS \geq 13.6$
SO ₂	ppb	$0 \leq C < 1$	$1 \leq C < 5$	$5 \leq C < 10$	$10 \leq C < 57$	$57 \leq C < 172$	$C \geq 172$
NO ₂	ppb	$0 \leq C < 5$	$5 \leq C < 15$	$15 \leq C < 30$	$30 \leq C < 100$	$100 \leq C < 212$	$C \geq 212$
H ₂ S	ppb	$0 \leq C < 1$	$1 \leq C < 3.6$	$3.6 \leq C < 5$	$5 \leq C < 8$	$8 \leq C < 10.8$	$C \geq 10.8$
O ₃	ppb	$0 \leq C < 10$	$10 \leq C < 20$	$20 \leq C < 40$	$40 \leq C < 60$	$60 \leq C < 82$	$C \geq 82$
PM _{2.5}	$\mu\text{g}/\text{m}^3$	$0 \leq C < 2$	$2 \leq C < 4$	$4 \leq C < 10$	$10 \leq C < 20$	$20 \leq C < 30$	$C \geq 30$

Monthly Update

- Achieved > 95% of scheduled uptime for all parameters except weather (0%)
- Downtime of <5% due to routine daily internal zeroes and spans,
- Weather data was taken from the Regina RCS station operated by ECCC - MSC while weather sensor out for calibration

GPAZ Regina Station - October 2021 Summary Report

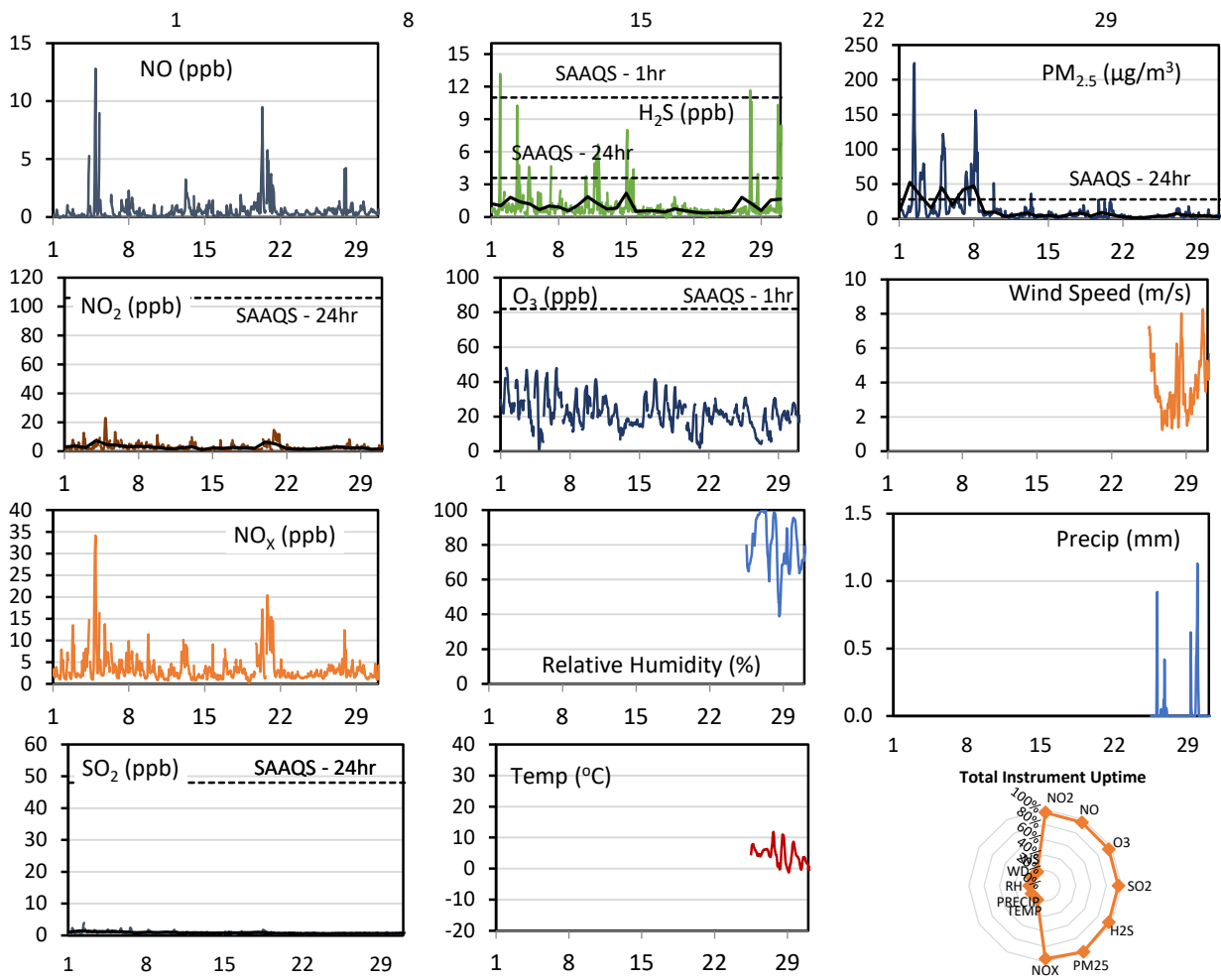
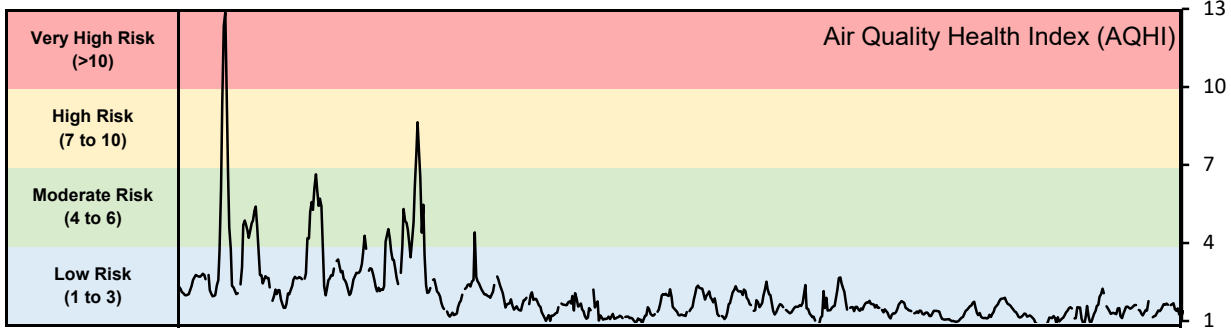
Exceedance Summary (24- Hour Average - Exceedances Highlighted)

Exceedance Time	AQHI	NO ₂	NO	SO ₂	O ₃	NO _x	H ₂ S	PM _{2.5}	Temp	WD	WS
	-	ppb	ppb	ppb	ppb	ppb	ppb	µg/m ³	°C	deg	m/s
Oct-07	3.4	2.8	0.3	2.7	18.7	3.3	0.9	45.4	10.6	322.1	4.6
Oct-08	3.1	3.6	3.2	0.7	20.3	7.0	1.1	36.3	11.0	129.2	2.9

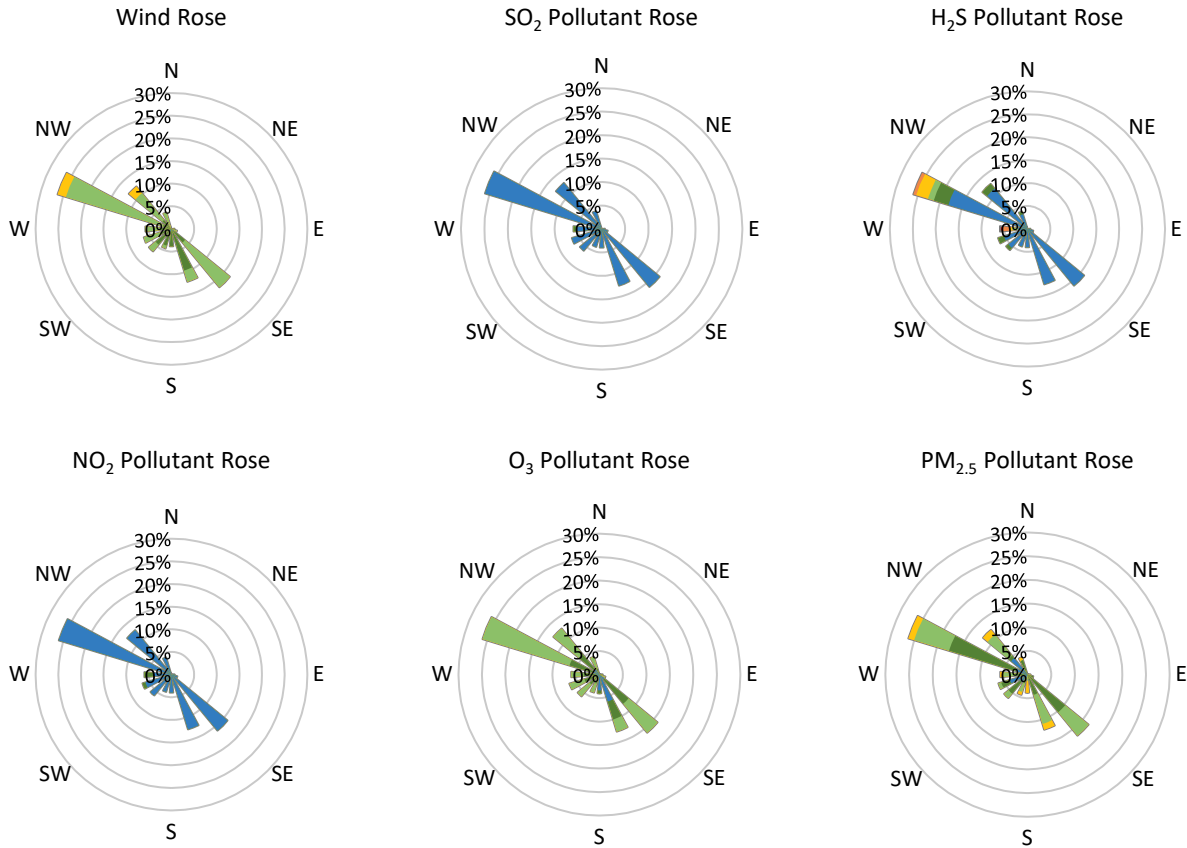
GPAZ Yorkton Station - October 2021 Summary Report

Pollutants		Month Records		24-Hour Records				1-Hour Records			
Name	Conc. Unit	Avg. Conc.	Total Uptime	Maximum		SAAQS Standard	Exceed Days	Maximum		SAAQS Standard	Exceed Hours
				Conc.	Time			Conc.	Time		
NO	ppb	0.6	96%	2.5	Oct-20	-	-	12.8	Oct-04 22:00	-	-
NO ₂	ppb	2.8	96%	7.4	Oct-04	106	0	23.0	Oct-04 21:00	159	0
NO _x	ppb	3.4	96%	9.2	Oct-04	-	-	34.1	Oct-04 22:00	-	-
SO ₂	ppb	0.8	96%	1.4	Oct-02	48	0	3.9	Oct-02 10:00	172	0
H ₂ S	ppb	1.0	96%	2.2	Oct-15	3.6	0	13.2	Oct-01 22:00	11	2
O ₃	ppb	22.1	96%	32.7	Oct-01	-	-	48.1	Oct-01 14:00	82	0
PM _{2.5}	µg/m ³	12.4	100%	52.5	Oct-02	28	5	223.9	Oct-02 10:00	-	-

SAAQS: Saskatchewan Ambient Air Quality Standards



* colored lines indicate 1-hr concentration data for all parameters; solid black lines indicate 24-hr concentrations for PM_{2.5}, NO₂, SO₂, and H₂S



Parameters	Unit	Color Code for Wind Speed and Pollution Concentration Class						
Wind Speed	m/s	$0.3 \leq WS < 1.4$	$1.4 \leq WS < 3.1$	$3.1 \leq WS < 7.8$	$7.8 \leq WS < 10.8$	$10.8 \leq WS < 13.6$	$WS \geq 13.6$	
SO ₂	ppb	$0 \leq C < 1$	$1 \leq C < 5$	$5 \leq C < 10$	$10 \leq C < 57$	$57 \leq C < 172$	$C \geq 172$	
NO ₂	ppb	$0 \leq C < 5$	$5 \leq C < 15$	$15 \leq C < 30$	$30 \leq C < 100$	$100 \leq C < 212$	$C \geq 212$	
H ₂ S	ppb	$0 \leq C < 1$	$1 \leq C < 3.6$	$3.6 \leq C < 5$	$5 \leq C < 8$	$8 \leq C < 10.8$	$C \geq 10.8$	
O ₃	ppb	$0 \leq C < 10$	$10 \leq C < 20$	$20 \leq C < 40$	$40 \leq C < 60$	$60 \leq C < 82$	$C \geq 82$	
PM _{2.5}	$\mu\text{g}/\text{m}^3$	$0 \leq C < 2$	$2 \leq C < 4$	$4 \leq C < 10$	$10 \leq C < 20$	$20 \leq C < 30$	$C \geq 30$	

Monthly Update

- Achieved at least 95 % of scheduled uptime for all parameters, except weather (21%)
- Downtime of <5% due to routine daily internal zeroes and spans

GPAZ Yorkton Station - October 2021 Summary Report

Exceedance Summary (1- Hour Average - Exceedances Highlighted)

Exceedance Time	AQHI	NO ₂	NO	SO ₂	O ₃	NO _x	H ₂ S	PM _{2.5}	Temp	WD	WS
	-	ppb	ppb	ppb	ppb	ppb	ppb	µg/m ³	°C	deg	m/s
Oct-01 22:00	2.8	5.4	0.1	1.0	28.0	5.5	13.2	18.2	-	-	-
Oct-27 21:00	1.5	5.0	0.5	0.6	12.3	5.5	11.7	10.0	4.8	267.8	2.0

Exceedance Summary (24- Hour Average - Exceedances Highlighted)

Exceedance Time	AQHI	NO ₂	NO	SO ₂	O ₃	NO _x	H ₂ S	PM _{2.5}	Temp	WD	WS
	-	ppb	ppb	ppb	ppb	ppb	ppb	µg/m ³	°C	deg	m/s
Oct-02	4.3	3.7	0.3	1.4	28.5	4.0	1.0	52.5	-	-	-
Oct-03	3.4	2.5	0.1	1.2	31.4	2.6	1.8	33.1	-	-	-
Oct-05	3.8	4.5	0.9	1.2	25.2	5.4	1.2	44.8	-	-	-
Oct-07	3.4	3.0	0.5	0.8	23.0	3.6	1.0	42.0	-	-	-
Oct-08	3.7	3.5	0.6	1.0	22.5	4.0	0.9	47.3	-	-	-