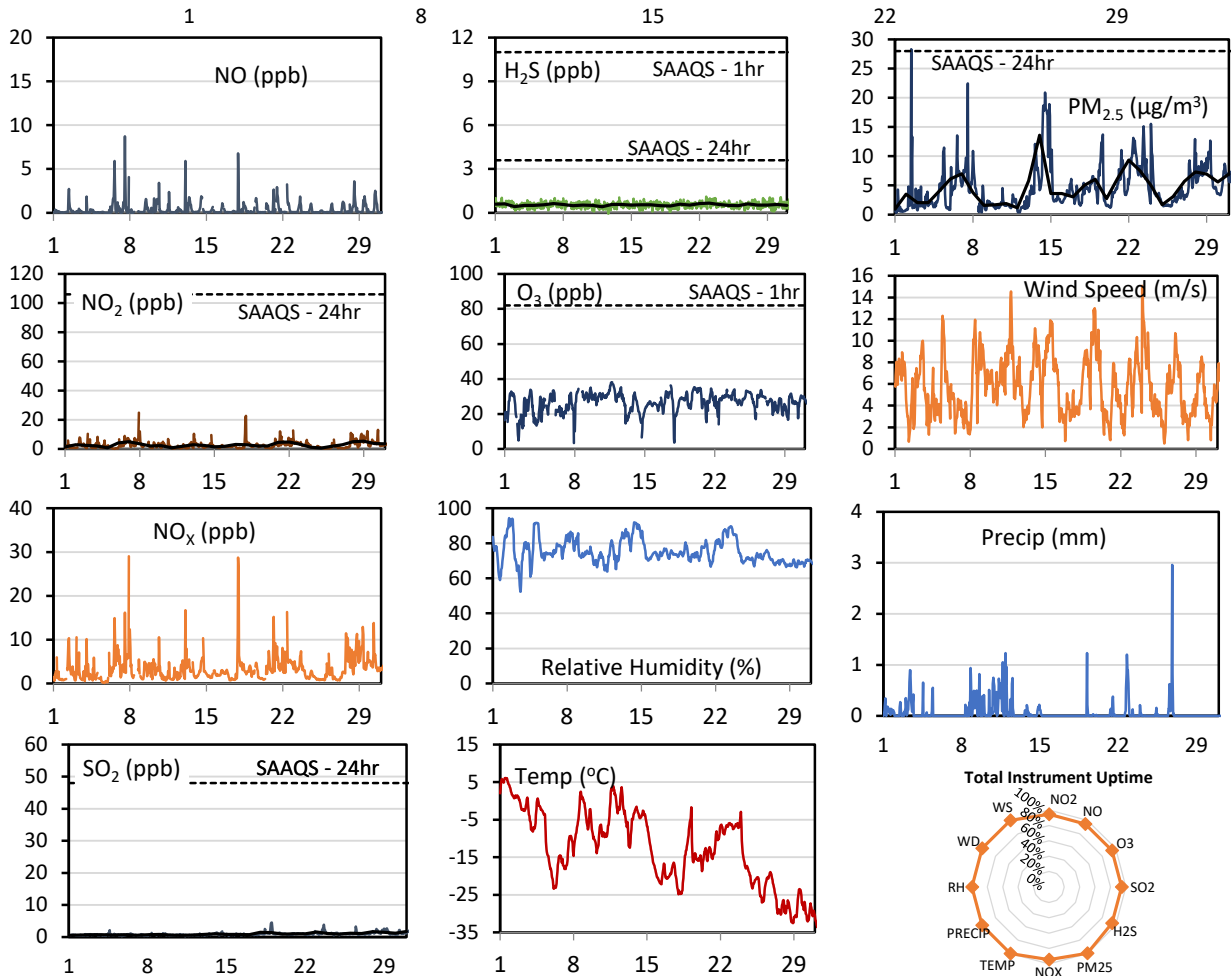
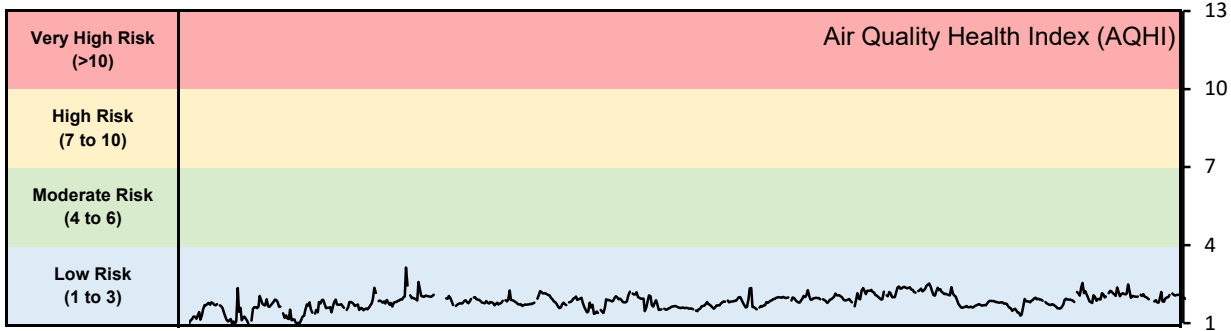


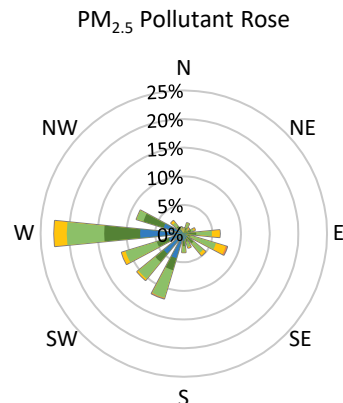
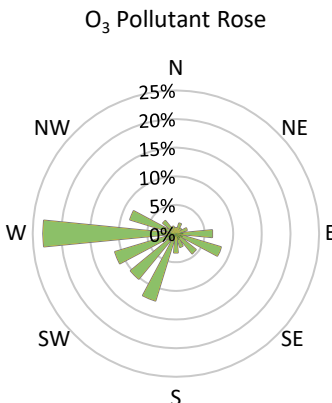
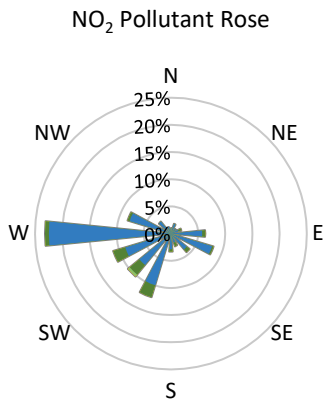
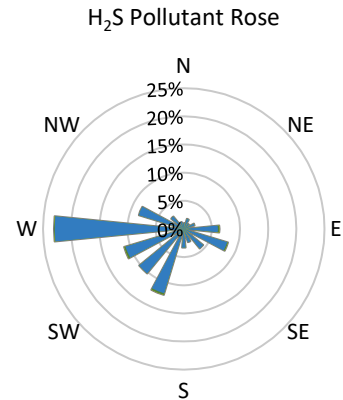
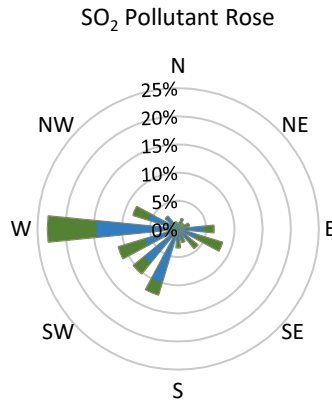
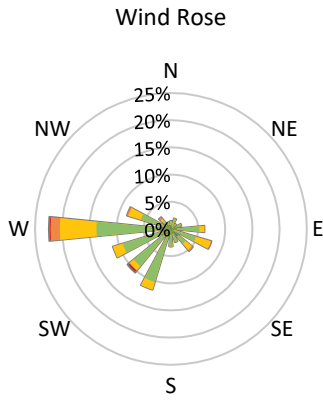
GPAZ Pense Station - December 2021 Summary Report

Pollutants		Month Records		24-Hour Records				1-Hour Records			
Name	Conc. Unit	Avg. Conc.	Total Uptime	Maximum		SAAQS Standard	Exceed Days	Maximum		SAAQS Standard	Exceed Hours
				Conc.	Time			Conc.	Time		
NO	ppb	0.4	94%	1.1	Dec-07	-	-	8.7	Dec-07 13:00	-	-
NO ₂	ppb	2.7	94%	5.3	Dec-29	106	0	24.9	Dec-07 22:00	159	0
NO _x	ppb	3.3	94%	6.1	Dec-29	-	-	29.0	Dec-07 22:00	-	-
SO ₂	ppb	1.0	94%	1.7	Dec-31	48	0	4.5	Dec-19 01:00	172	0
H ₂ S	ppb	0.5	94%	0.7	Dec-23	3.6	0	1.1	Dec-22 17:00	11	0
O ₃	ppb	26.6	94%	33.5	Dec-11	-	-	38.1	Dec-11 18:00	82	0
PM _{2.5}	µg/m ³	4.7	100%	13.6	Dec-14	28	0	28.3	Dec-02 11:00	-	-

SAAQS: Saskatchewan Ambient Air Quality Standards



* colored lines indicate 1-hr concentration data for all parameters; solid black lines indicate 24-hr concentrations for PM_{2.5}, NO₂, SO₂, and H₂S



Parameters	Unit	Color Code for Wind Speed and Pollution Concentration Class						
		0.3 ≤ WS < 1.4	1.4 ≤ WS < 3.1	3.1 ≤ WS < 7.8	7.8 ≤ WS < 10.8	10.8 ≤ WS < 13.6	WS ≥ 13.6	
SO ₂	ppb	0 ≤ C < 1	1 ≤ C < 5	5 ≤ C < 10	10 ≤ C < 57	57 ≤ C < 172	C ≥ 172	
NO ₂	ppb	0 ≤ C < 5	5 ≤ C < 15	15 ≤ C < 30	30 ≤ C < 100	100 ≤ C < 212	C ≥ 212	
H ₂ S	ppb	0 ≤ C < 1	1 ≤ C < 3.6	3.6 ≤ C < 5	5 ≤ C < 8	8 ≤ C < 10.8	C ≥ 10.8	
O ₃	ppb	0 ≤ C < 10	10 ≤ C < 20	20 ≤ C < 40	40 ≤ C < 60	60 ≤ C < 82	C ≥ 82	
PM _{2.5}	μg/m ³	0 ≤ C < 2	2 ≤ C < 4	4 ≤ C < 10	10 ≤ C < 20	20 ≤ C < 30	C ≥ 30	

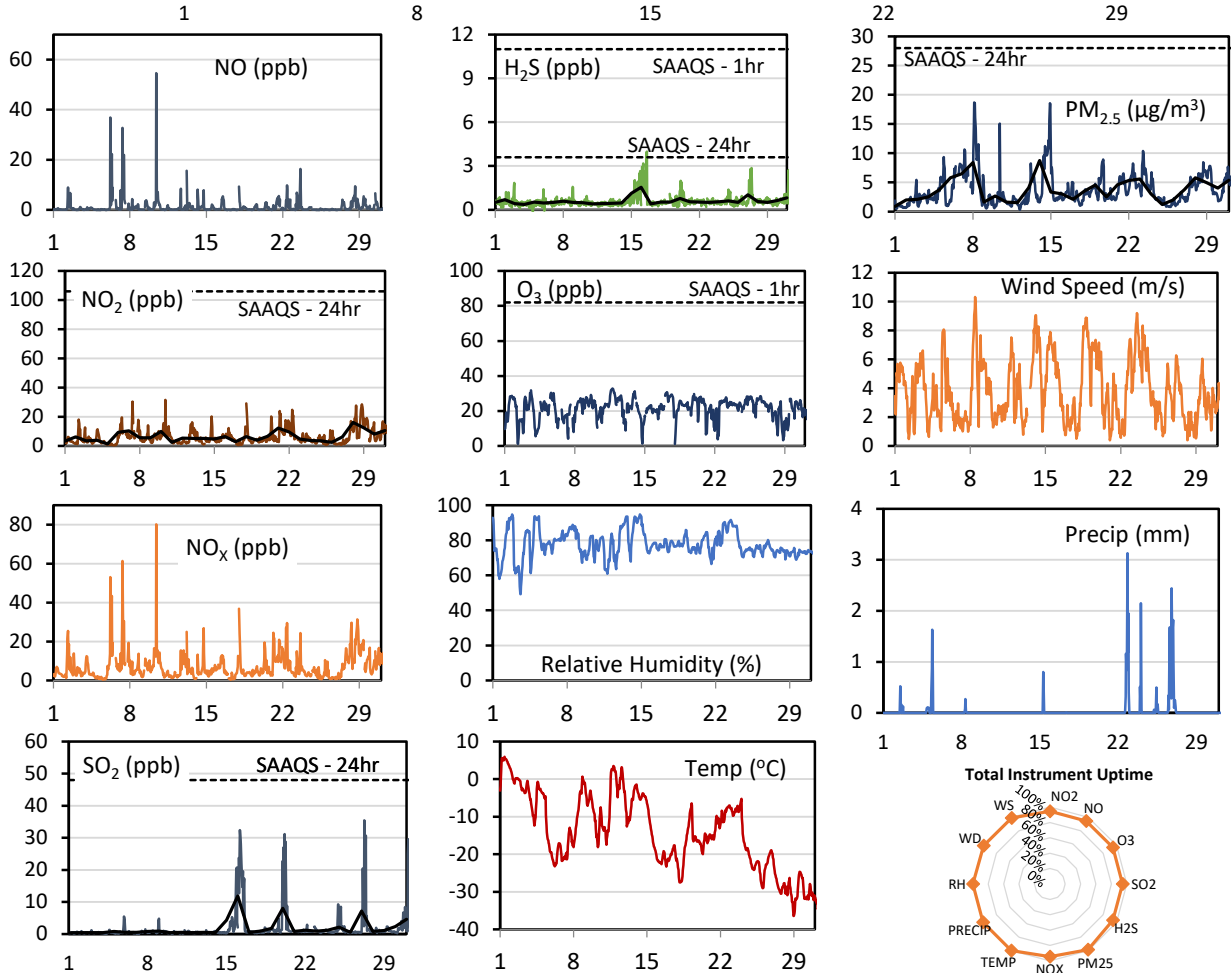
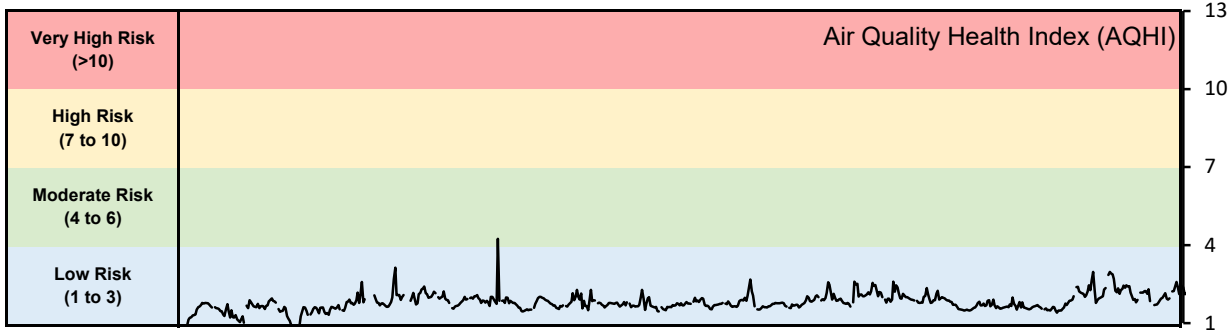
Monthly Update

- Achieved > 94% of scheduled uptime for all parameters
- Downtime of <6% due to routine daily internal zeroes and spans, quarterly verification

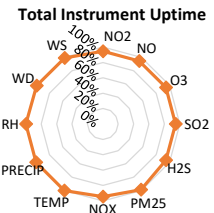
GPAZ Regina Station - December 2021 Summary Report

Pollutants		Month Records		24-Hour Records				1-Hour Records			
Name	Conc. Unit	Avg. Conc.	Total Uptime	Maximum		SAAQS Standard	Exceed Days	Maximum		SAAQS Standard	Exceed Hours
				Conc.	Time			Conc.	Time		
NO	ppb	1.2	94%	5.3	Dec-07	-	-	54.6	Dec-10 10:00	-	-
NO ₂	ppb	6.3	94%	16.1	Dec-28	106	0	31.6	Dec-10 10:00	159	0
NO _x	ppb	7.2	94%	17.7	Dec-28	-	-	80.2	Dec-10 10:00	-	-
SO ₂	ppb	1.9	94%	11.9	Dec-16	48	0	35.4	Dec-27 06:00	172	0
H ₂ S	ppb	0.6	94%	1.5	Dec-16	3.6	0	4.0	Dec-16 14:00	11	0
O ₃	ppb	21.3	94%	27.8	Dec-17	-	-	32.8	Dec-11 19:00	82	0
PM _{2.5}	µg/m ³	3.7	99%	8.8	Dec-14	28	0	18.7	Dec-08 03:00	-	-

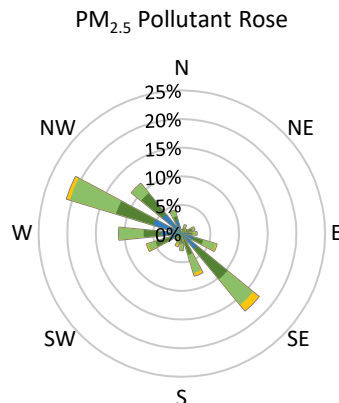
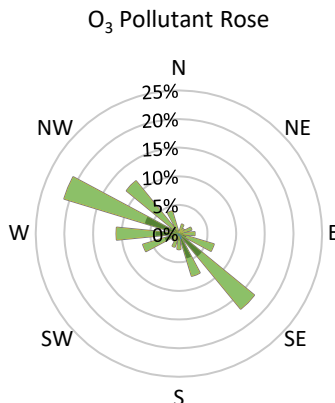
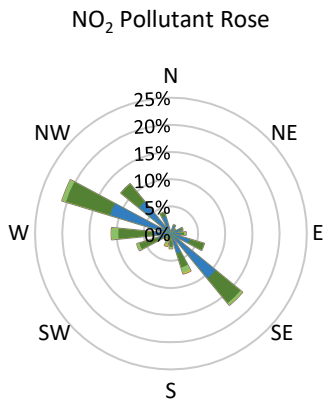
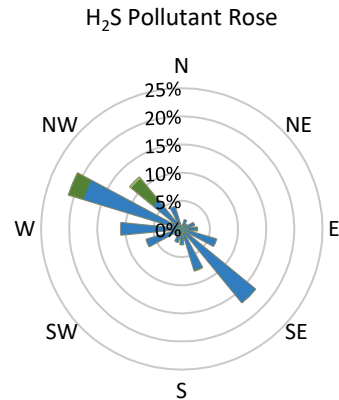
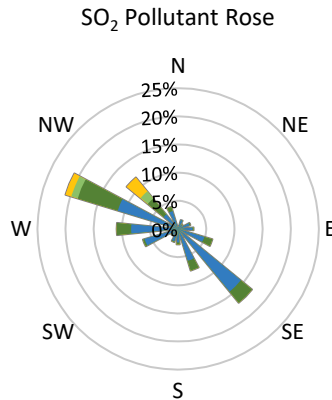
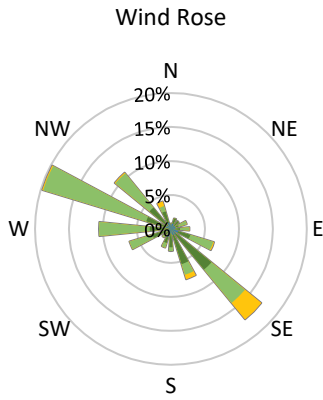
SAAQS: Saskatchewan Ambient Air Quality Standards



* colored lines indicate 1-hr concentration data for all parameters; solid black lines indicate 24-hr concentrations for PM_{2.5}, NO₂, SO₂, and H₂S



GPAZ Regina Station - December 2021 Summary Report



Parameters	Unit	Color Code for Wind Speed and Pollution Concentration Class						
Wind Speed	m/s	$0.3 \leq WS < 1.4$	$1.4 \leq WS < 3.1$	$3.1 \leq WS < 7.8$	$7.8 \leq WS < 10.8$	$10.8 \leq WS < 13.6$	$WS \geq 13.6$	
SO ₂	ppb	$0 \leq C < 1$	$1 \leq C < 5$	$5 \leq C < 10$	$10 \leq C < 57$	$57 \leq C < 172$	$C \geq 172$	
NO ₂	ppb	$0 \leq C < 5$	$5 \leq C < 15$	$15 \leq C < 30$	$30 \leq C < 100$	$100 \leq C < 212$	$C \geq 212$	
H ₂ S	ppb	$0 \leq C < 1$	$1 \leq C < 3.6$	$3.6 \leq C < 5$	$5 \leq C < 8$	$8 \leq C < 10.8$	$C \geq 10.8$	
O ₃	ppb	$0 \leq C < 10$	$10 \leq C < 20$	$20 \leq C < 40$	$40 \leq C < 60$	$60 \leq C < 82$	$C \geq 82$	
PM _{2.5}	$\mu\text{g}/\text{m}^3$	$0 \leq C < 2$	$2 \leq C < 4$	$4 \leq C < 10$	$10 \leq C < 20$	$20 \leq C < 30$	$C \geq 30$	

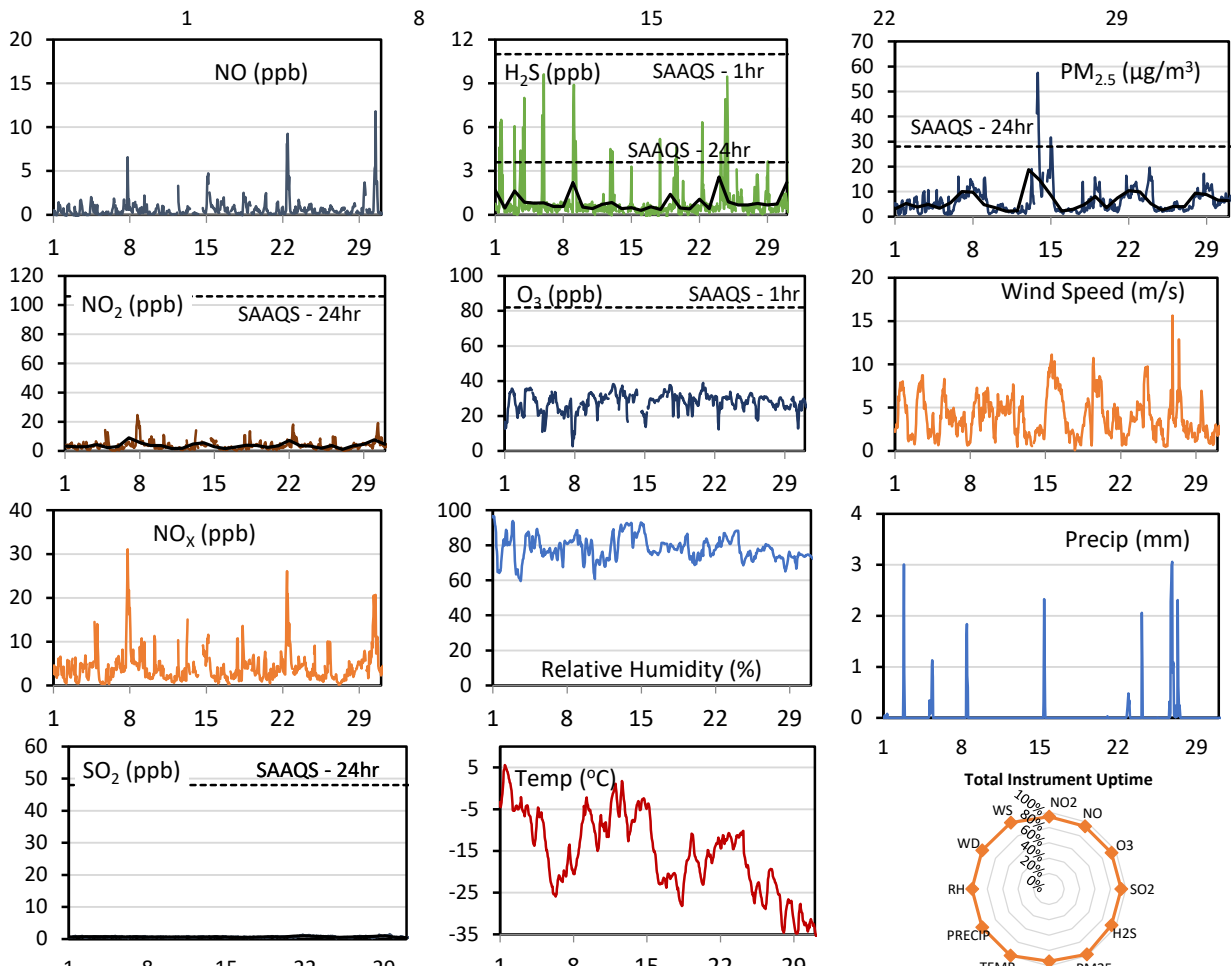
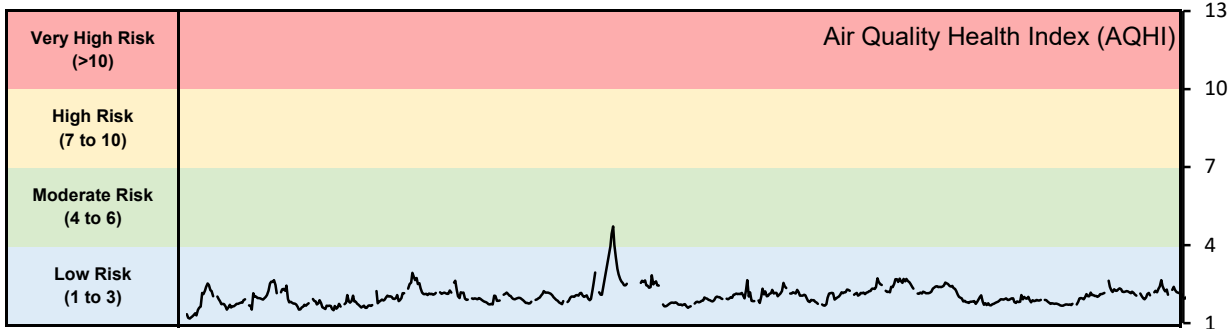
Monthly Update

- Achieved > 94% of scheduled uptime for all parameters
- Downtime of <6% due to routine daily internal zeroes and spans, quarterly verifications

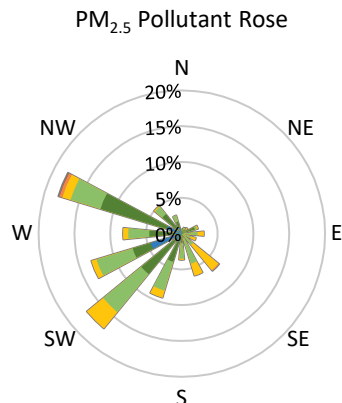
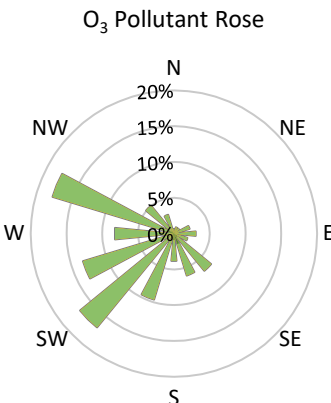
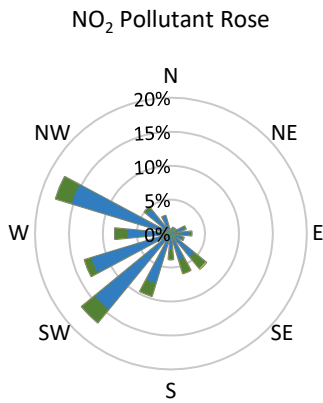
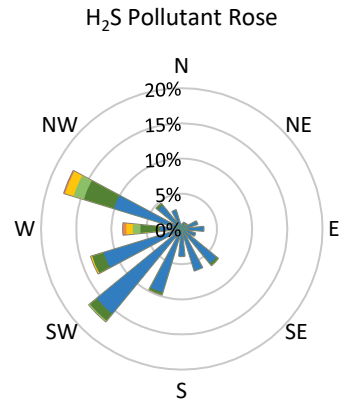
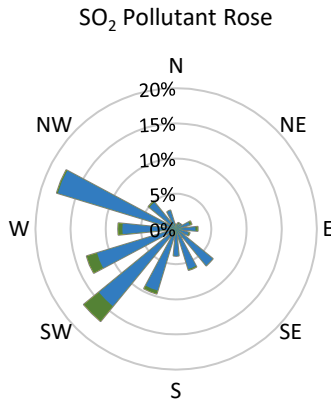
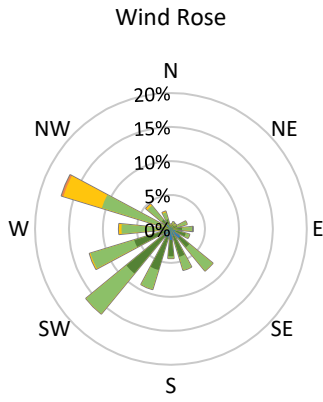
GPAZ Yorkton Station - December 2021 Summary Report

Pollutants		Month Records		24-Hour Records				1-Hour Records			
Name	Conc. Unit	Avg. Conc.	Total Uptime	Maximum		SAAQS Standard	Exceed Days	Maximum		SAAQS Standard	Exceed Hours
				Conc.	Time			Conc.	Time		
NO	ppb	0.7	94%	2.0	Dec-22	-	-	11.8	Dec-30 12:00	-	-
NO ₂	ppb	3.7	94%	9.0	Dec-07	106	0	24.6	Dec-07 19:00	159	0
NO _x	ppb	4.2	94%	9.9	Dec-07	-	-	31.1	Dec-07 19:00	-	-
SO ₂	ppb	0.7	94%	1.0	Dec-29	48	0	1.5	Dec-29 12:00	172	0
H ₂ S	ppb	0.9	94%	2.6	Dec-24	3.6	0	9.6	Dec-06 00:00	11	0
O ₃	ppb	27.7	94%	33.9	Dec-03	-	-	38.9	Dec-20 20:00	82	0
PM _{2.5}	µg/m ³	6.2	98%	18.8	Dec-13	28	0	57.5	Dec-13 20:00	-	-

SAAQS: Saskatchewan Ambient Air Quality Standards



* colored lines indicate 1-hr concentration data for all parameters; solid black lines indicate 24-hr concentrations for PM_{2.5}, NO₂, SO₂, and H₂S



Parameters	Unit	Color Code for Wind Speed and Pollution Concentration Class						
Wind Speed	m/s	$0.3 \leq WS < 1.4$	$1.4 \leq WS < 3.1$	$3.1 \leq WS < 7.8$	$7.8 \leq WS < 10.8$	$10.8 \leq WS < 13.6$	$WS \geq 13.6$	
SO ₂	ppb	$0 \leq C < 1$	$1 \leq C < 5$	$5 \leq C < 10$	$10 \leq C < 57$	$57 \leq C < 172$	$C \geq 172$	
NO ₂	ppb	$0 \leq C < 5$	$5 \leq C < 15$	$15 \leq C < 30$	$30 \leq C < 100$	$100 \leq C < 212$	$C \geq 212$	
H ₂ S	ppb	$0 \leq C < 1$	$1 \leq C < 3.6$	$3.6 \leq C < 5$	$5 \leq C < 8$	$8 \leq C < 10.8$	$C \geq 10.8$	
O ₃	ppb	$0 \leq C < 10$	$10 \leq C < 20$	$20 \leq C < 40$	$40 \leq C < 60$	$60 \leq C < 82$	$C \geq 82$	
PM _{2.5}	µg/m ³	$0 \leq C < 2$	$2 \leq C < 4$	$4 \leq C < 10$	$10 \leq C < 20$	$20 \leq C < 30$	$C \geq 30$	

Monthly Update

- Achieved > 94% of scheduled uptime for all parameters
- Downtime of <6% due to routine daily internal zeroes and spans, quarterly verifications