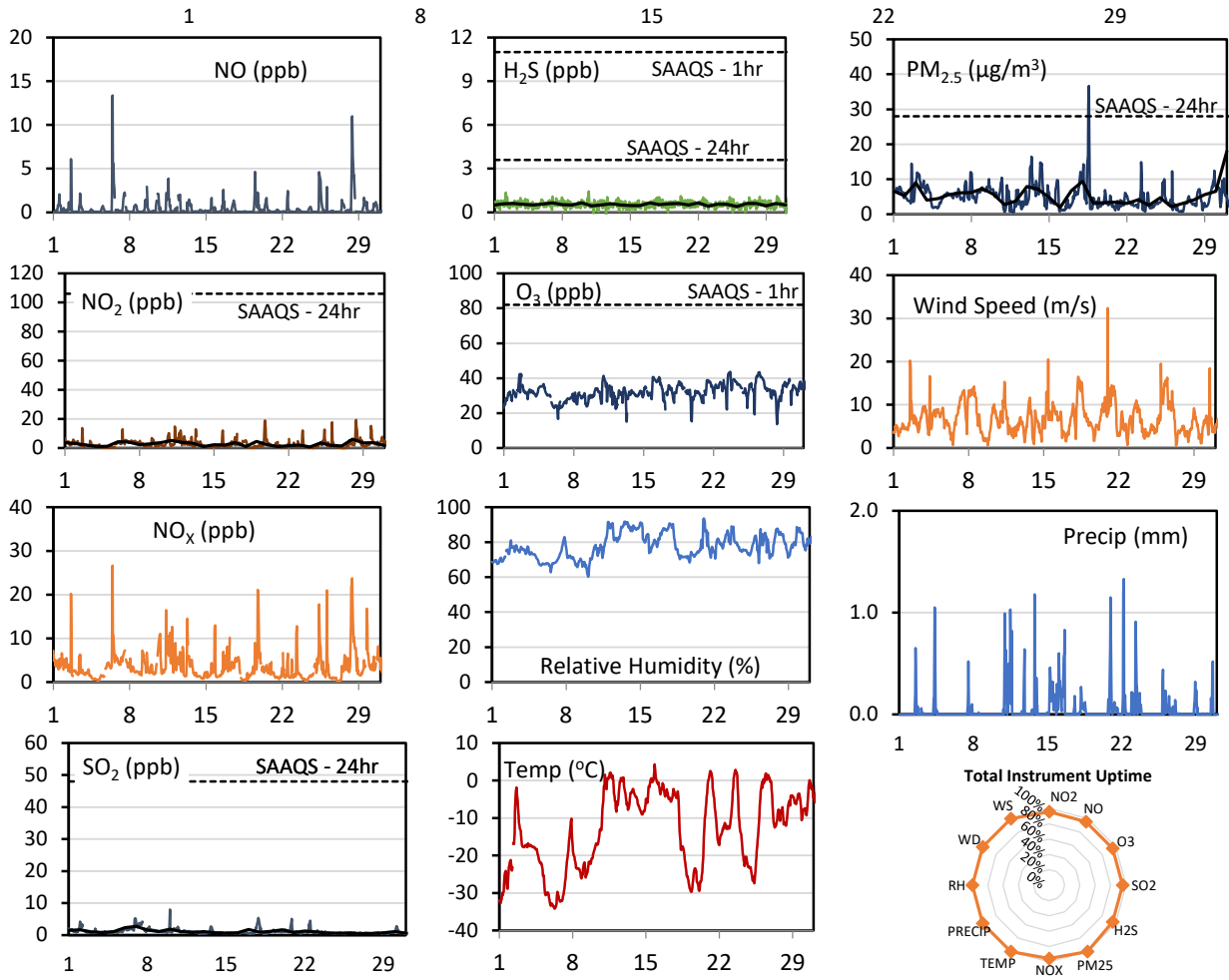
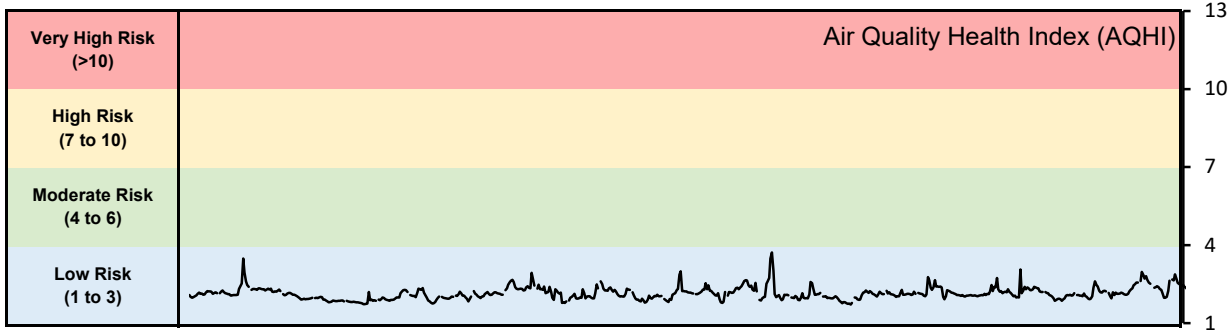


## GPAZ Pense Station - January 2022 Summary Report

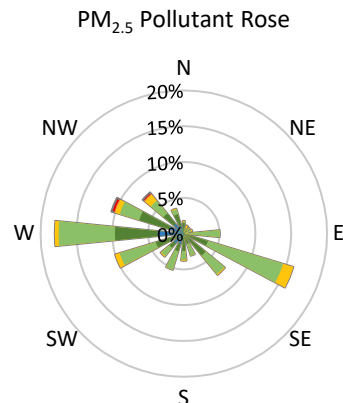
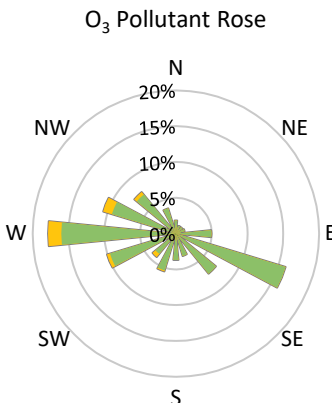
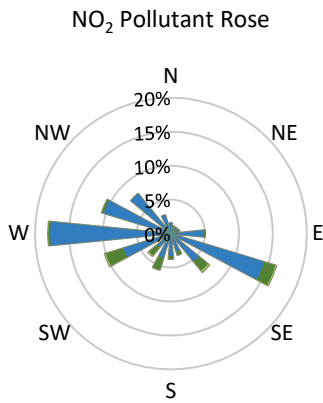
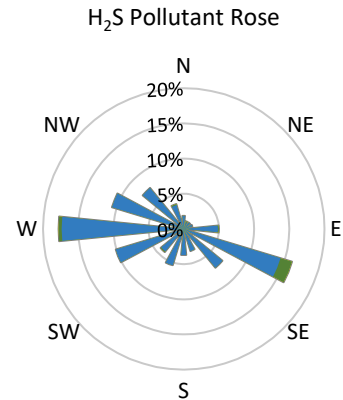
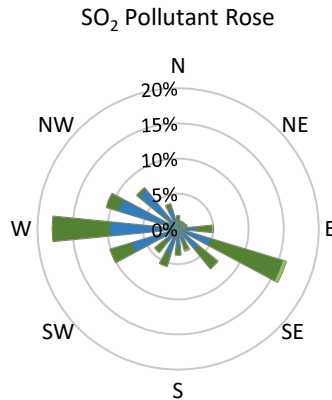
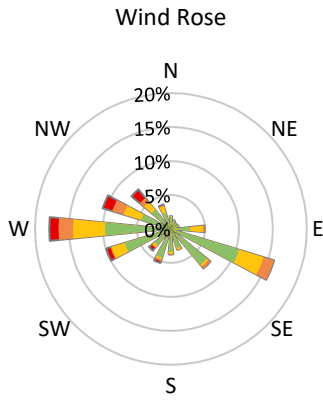
Pollutants		Month Records		24-Hour Records				1-Hour Records			
Name	Conc. Unit	Avg. Conc.	Total Uptime	Maximum		SAAQS Standard	Exceed Days	Maximum		SAAQS Standard	Exceed Hours
				Conc.	Time			Conc.	Time		
NO	ppb	0.5	96%	2.0	Jan-28	-	-	13.4	Jan-06 10:00	-	-
NO <sub>2</sub>	ppb	2.7	96%	6.1	Jan-28	106	0	19.3	Jan-28 08:00	159	0
NO <sub>x</sub>	ppb	3.5	96%	8.4	Jan-28	-	-	26.6	Jan-06 10:00	-	-
SO <sub>2</sub>	ppb	1.1	96%	2.7	Jan-07	48	0	8.0	Jan-10 00:00	172	0
H <sub>2</sub> S	ppb	0.5	96%	0.7	Jan-10	3.6	0	1.4	Jan-10 17:00	11	0
O <sub>3</sub>	ppb	32.3	96%	38.6	Jan-26	-	-	43.6	Jan-23 16:00	82	0
PM <sub>2.5</sub>	µg/m <sup>3</sup>	5.4	100%	18.0	Jan-31	28	0	150.4	Jan-31 20:00	-	-

SAAQS: Saskatchewan Ambient Air Quality Standards



\* colored lines indicate 1-hr concentration data for all parameters; solid black lines indicate 24-hr concentrations for PM<sub>2.5</sub>, NO<sub>2</sub>, SO<sub>2</sub>, and H<sub>2</sub>S

**GPAZ Pense Station - January 2022 Summary Report**



Parameters	Unit	Color Code for Wind Speed and Pollution Concentration Class						
Wind Speed	m/s	$0.3 \leq WS < 1.4$	$1.4 \leq WS < 3.1$	$3.1 \leq WS < 7.8$	$7.8 \leq WS < 10.8$	$10.8 \leq WS < 13.6$	$WS \geq 13.6$	
SO <sub>2</sub>	ppb	$0 \leq C < 1$	$1 \leq C < 5$	$5 \leq C < 10$	$10 \leq C < 57$	$57 \leq C < 172$	$C \geq 172$	
NO <sub>2</sub>	ppb	$0 \leq C < 5$	$5 \leq C < 15$	$15 \leq C < 30$	$30 \leq C < 100$	$100 \leq C < 212$	$C \geq 212$	
H <sub>2</sub> S	ppb	$0 \leq C < 1$	$1 \leq C < 3.6$	$3.6 \leq C < 5$	$5 \leq C < 8$	$8 \leq C < 10.8$	$C \geq 10.8$	
O <sub>3</sub>	ppb	$0 \leq C < 10$	$10 \leq C < 20$	$20 \leq C < 40$	$40 \leq C < 60$	$60 \leq C < 82$	$C \geq 82$	
PM <sub>2.5</sub>	µg/m <sup>3</sup>	$0 \leq C < 2$	$2 \leq C < 4$	$4 \leq C < 10$	$10 \leq C < 20$	$20 \leq C < 30$	$C \geq 30$	

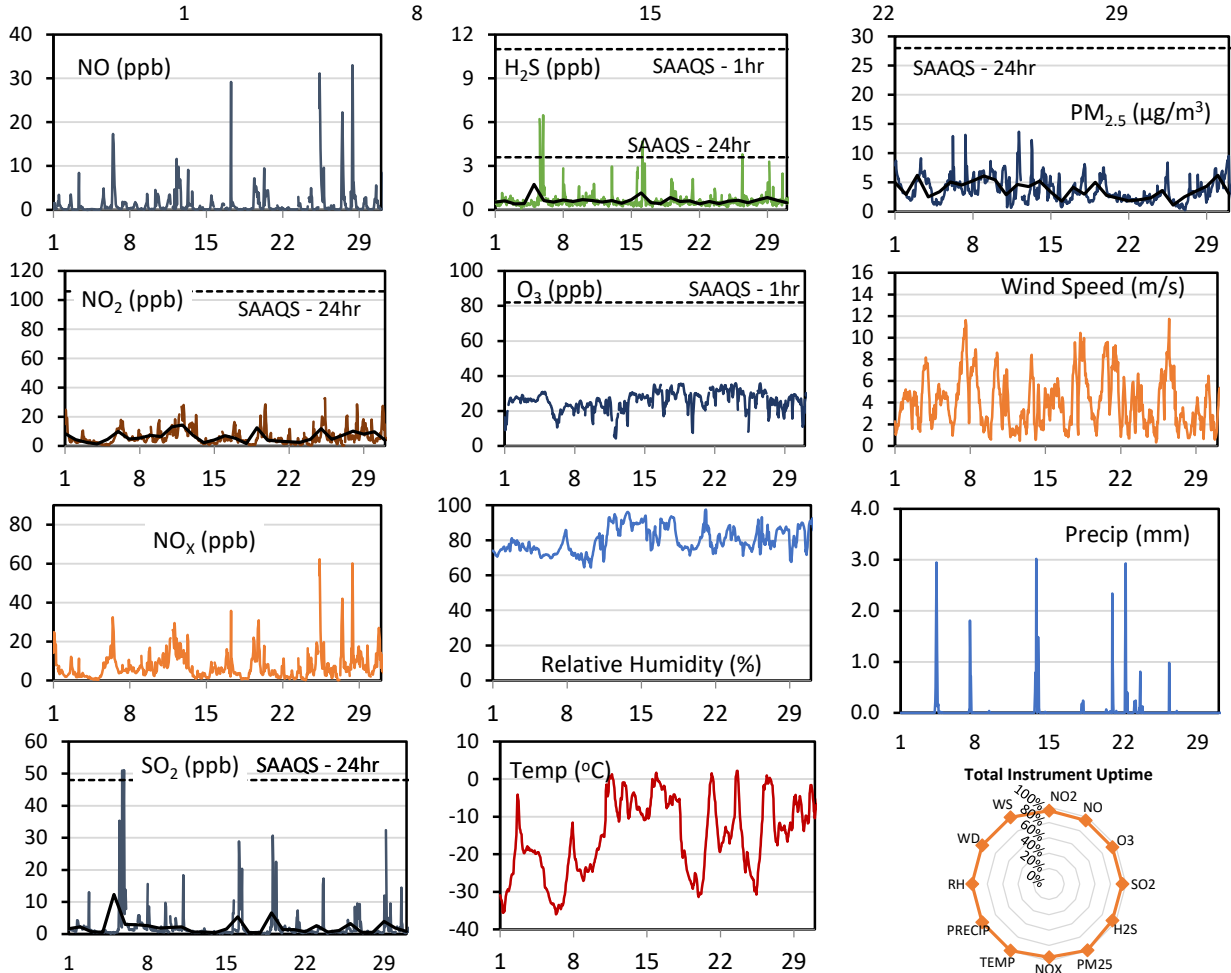
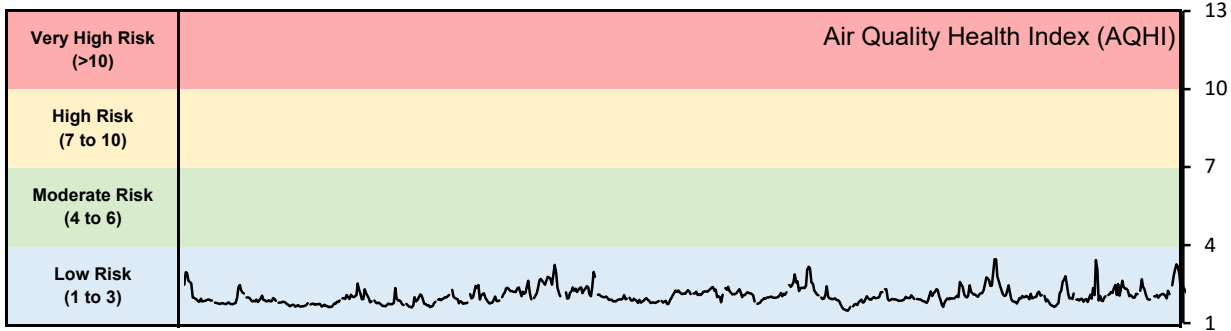
**Monthly Update**

- Achieved > 95% of scheduled uptime for all parameters
- Downtime of <5% due to routine daily internal zeroes and spans

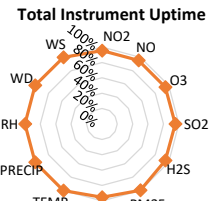
## GPAZ Regina Station - January 2022 Summary Report

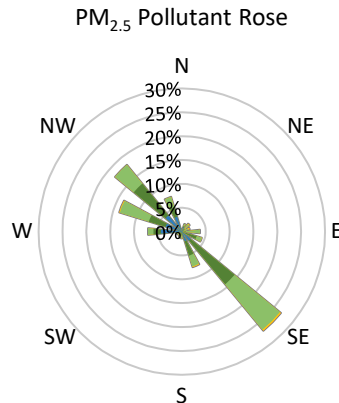
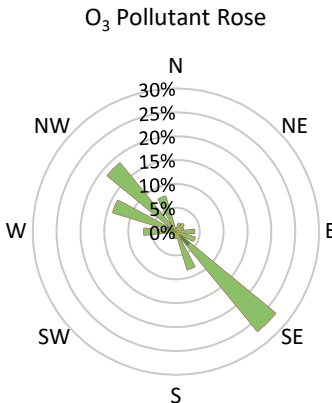
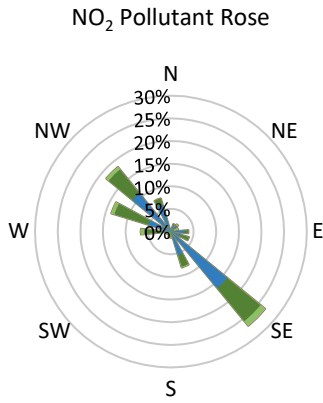
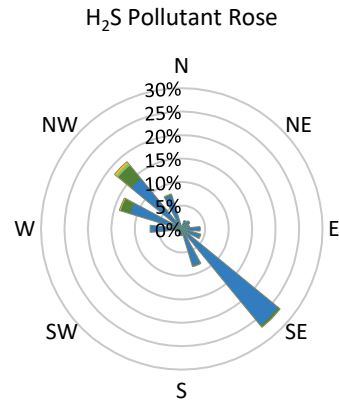
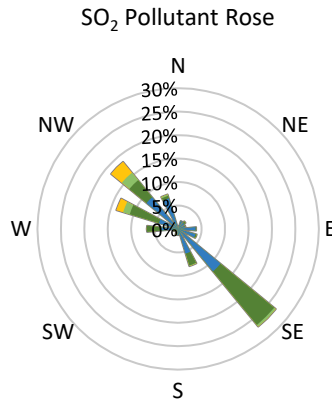
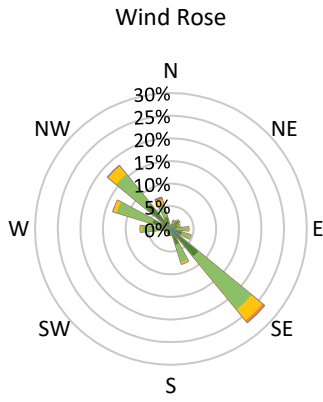
Pollutants		Month Records		24-Hour Records				1-Hour Records			
Name	Conc. Unit	Avg. Conc.	Total Uptime	Maximum		SAAQS Standard	Exceed Days	Maximum		SAAQS Standard	Exceed Hours
				Conc.	Time			Conc.	Time		
NO	ppb	1.4	95%	5.8	Jan-25	-	-	33.0	Jan-28 09:00	-	-
NO <sub>2</sub>	ppb	6.2	95%	14.3	Jan-12	106	0	32.8	Jan-25 09:00	159	0
NO <sub>x</sub>	ppb	7.1	95%	16.9	Jan-25	-	-	62.2	Jan-25 09:00	-	-
SO <sub>2</sub>	ppb	2.2	95%	12.3	Jan-05	48	0	51.1	Jan-05 22:00	172	0
H <sub>2</sub> S	ppb	0.6	95%	1.7	Jan-05	3.6	0	6.5	Jan-05 22:00	11	0
O <sub>3</sub>	ppb	25.7	95%	32.3	Jan-18	-	-	35.9	Jan-24 02:00	82	0
PM <sub>2.5</sub>	µg/m <sup>3</sup>	3.8	100%	6.2	Jan-30	28	0	13.7	Jan-12 03:00	-	-

SAAQS: Saskatchewan Ambient Air Quality Standards



\* colored lines indicate 1-hr concentration data for all parameters; solid black lines indicate 24-hr concentrations for PM<sub>2.5</sub>, NO<sub>2</sub>, SO<sub>2</sub>, and H<sub>2</sub>S





Parameters	Unit	Color Code for Wind Speed and Pollution Concentration Class						
Wind Speed	m/s	$0.3 \leq WS < 1.4$	$1.4 \leq WS < 3.1$	$3.1 \leq WS < 7.8$	$7.8 \leq WS < 10.8$	$10.8 \leq WS < 13.6$	$WS \geq 13.6$	
SO <sub>2</sub>	ppb	$0 \leq C < 1$	$1 \leq C < 5$	$5 \leq C < 10$	$10 \leq C < 57$	$57 \leq C < 172$	$C \geq 172$	
NO <sub>2</sub>	ppb	$0 \leq C < 5$	$5 \leq C < 15$	$15 \leq C < 30$	$30 \leq C < 100$	$100 \leq C < 212$	$C \geq 212$	
H <sub>2</sub> S	ppb	$0 \leq C < 1$	$1 \leq C < 3.6$	$3.6 \leq C < 5$	$5 \leq C < 8$	$8 \leq C < 10.8$	$C \geq 10.8$	
O <sub>3</sub>	ppb	$0 \leq C < 10$	$10 \leq C < 20$	$20 \leq C < 40$	$40 \leq C < 60$	$60 \leq C < 82$	$C \geq 82$	
PM <sub>2.5</sub>	$\mu\text{g}/\text{m}^3$	$0 \leq C < 2$	$2 \leq C < 4$	$4 \leq C < 10$	$10 \leq C < 20$	$20 \leq C < 30$	$C \geq 30$	

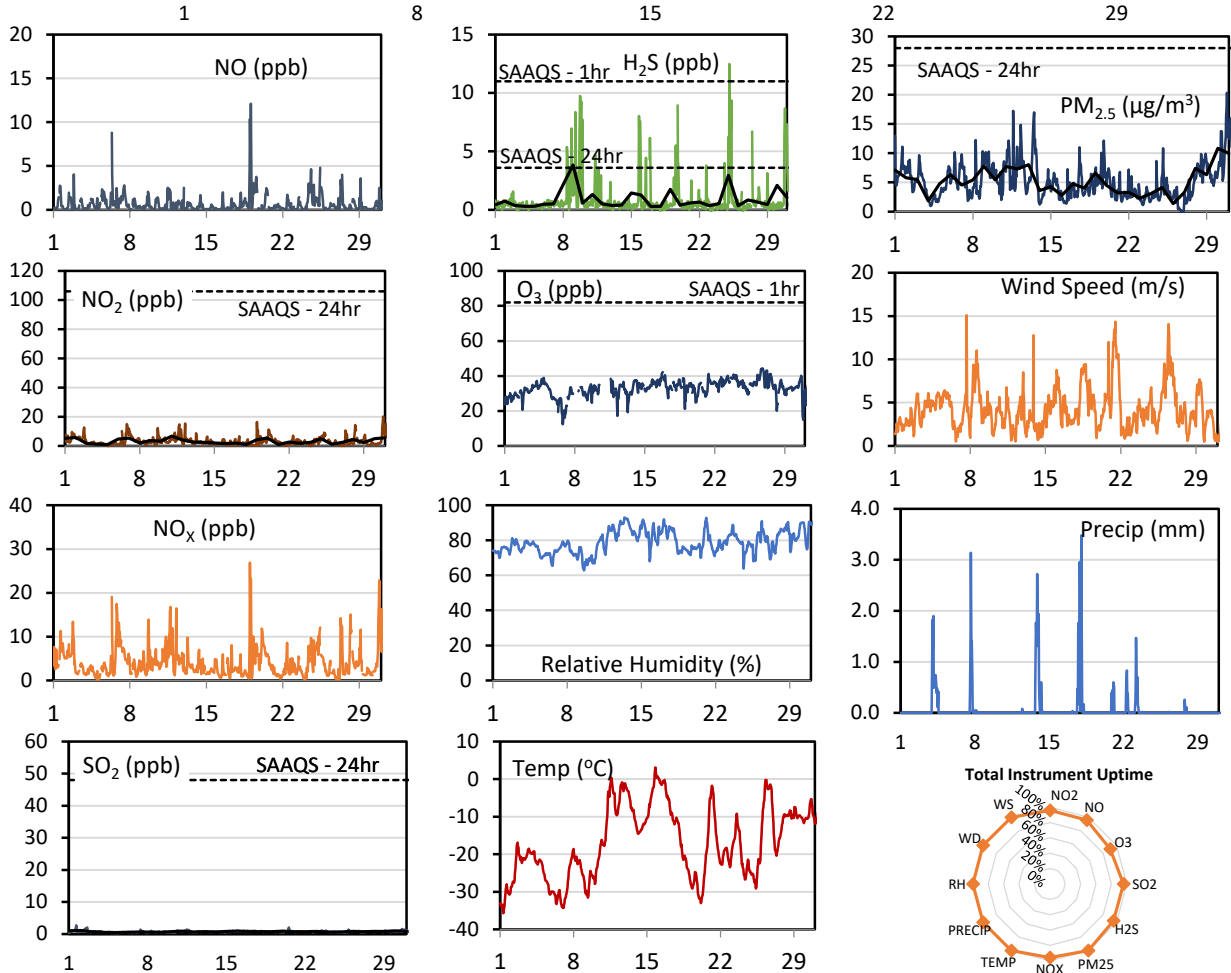
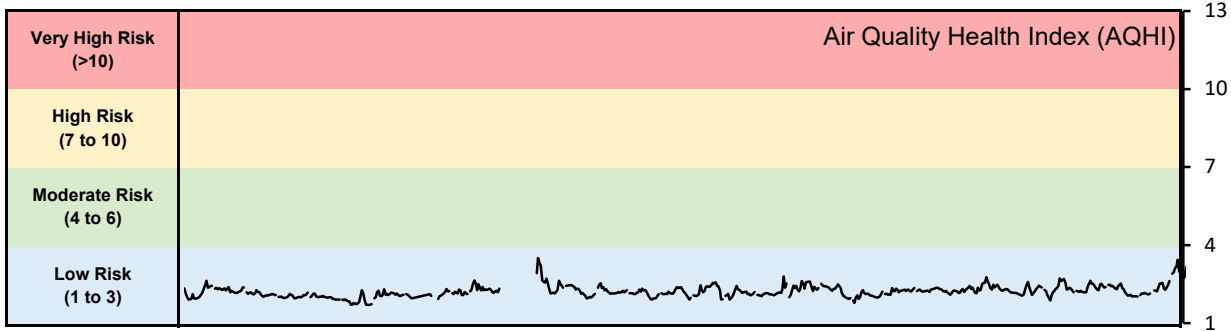
Monthly Update

- Achieved > 95% of scheduled uptime for all parameters
- Downtime of <5% due to routine daily internal zeroes and spans

## GPAZ Yorkton Station - January 2022 Summary Report

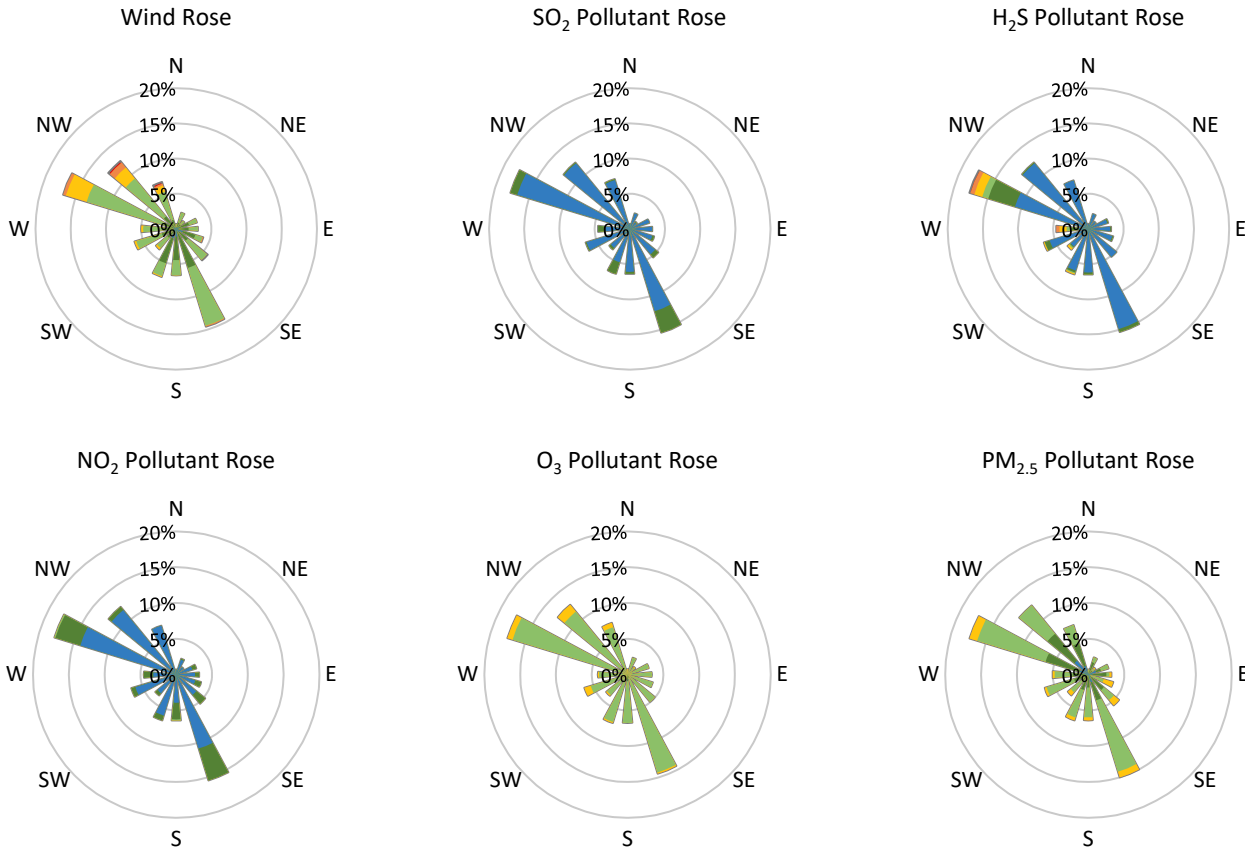
Pollutants		Month Records		24-Hour Records				1-Hour Records			
Name	Conc. Unit	Avg. Conc.	Total Uptime	Maximum		SAAQS Standard	Exceed Days	Maximum		SAAQS Standard	Exceed Hours
				Conc.	Time			Conc.	Time		
NO	ppb	0.7	96%	2.5	Jan-19	-	-	12.1	Jan-19 02:00	-	-
NO <sub>2</sub>	ppb	3.2	96%	6.7	Jan-11	106	0	20.1	Jan-30 20:00	159	0
NO <sub>x</sub>	ppb	4.1	96%	7.7	Jan-11	-	-	26.9	Jan-19 00:00	-	-
SO <sub>2</sub>	ppb	0.7	96%	1.1	Jan-02	48	0	2.7	Jan-01 16:00	172	0
H <sub>2</sub> S	ppb	0.9	96%	3.8	Jan-09	3.6	1	12.5	Jan-25 02:00	11	1
O <sub>3</sub>	ppb	33.0	90%	39.9	Jan-26	-	-	44.2	Jan-26 19:00	82	0
PM <sub>2.5</sub>	µg/m <sup>3</sup>	5.3	100%	10.8	Jan-30	28	0	20.4	Jan-30 20:00	-	-

SAAQS: Saskatchewan Ambient Air Quality Standards



\* colored lines indicate 1-hr concentration data for all parameters; solid black lines indicate 24-hr concentrations for PM<sub>2.5</sub>, NO<sub>2</sub>, SO<sub>2</sub>, and H<sub>2</sub>S

**GPAZ Yorkton Station - January 2022 Summary Report**



Parameters	Unit	Color Code for Wind Speed and Pollution Concentration Class						
Wind Speed	m/s	0.3 ≤ WS < 1.4	1.4 ≤ WS < 3.1	3.1 ≤ WS < 7.8	7.8 ≤ WS < 10.8	10.8 ≤ WS < 13.6	WS ≥ 13.6	
SO <sub>2</sub>	ppb	0 ≤ C < 1	1 ≤ C < 5	5 ≤ C < 10	10 ≤ C < 57	57 ≤ C < 172	C ≥ 172	
NO <sub>2</sub>	ppb	0 ≤ C < 5	5 ≤ C < 15	15 ≤ C < 30	30 ≤ C < 100	100 ≤ C < 212	C ≥ 212	
H <sub>2</sub> S	ppb	0 ≤ C < 1	1 ≤ C < 3.6	3.6 ≤ C < 5	5 ≤ C < 8	8 ≤ C < 10.8	C ≥ 10.8	
O <sub>3</sub>	ppb	0 ≤ C < 10	10 ≤ C < 20	20 ≤ C < 40	40 ≤ C < 60	60 ≤ C < 82	C ≥ 82	
PM <sub>2.5</sub>	µg/m <sup>3</sup>	0 ≤ C < 2	2 ≤ C < 4	4 ≤ C < 10	10 ≤ C < 20	20 ≤ C < 30	C ≥ 30	

**Monthly Update**

- Achieved > 90% of scheduled uptime for all parameters
- Downtime of <10% due to routine daily internal zeroes and spans

**Exceedance Summary (1- Hour Average - Exceedances Highlighted)**

Exceedance Time	AQHI	NO <sub>2</sub>	NO	SO <sub>2</sub>	O <sub>3</sub>	NO <sub>x</sub>	H <sub>2</sub> S	PM <sub>2.5</sub>	Temp	WD	WS
	-	ppb	ppb	ppb	ppb	ppb	ppb	µg/m <sup>3</sup>	°C	deg	m/s
Jan-25 02:00	2.8	6.3	1.2	0.7	33.3	7.7	12.5	10.9	-25.2	285.2	3.8

**Exceedance Summary (24- Hour Average - Exceedances Highlighted)**

Exceedance Time	AQHI	NO <sub>2</sub>	NO	SO <sub>2</sub>	O <sub>3</sub>	NO <sub>x</sub>	H <sub>2</sub> S	PM <sub>2.5</sub>	Temp	WD	WS
	-	ppb	ppb	ppb	ppb	ppb	ppb	µg/m <sup>3</sup>	°C	deg	m/s
Jan-09	2.3	3.6	0.6	0.6	30.7	4.3	3.8	7.8	-27.7	272.1	4.0