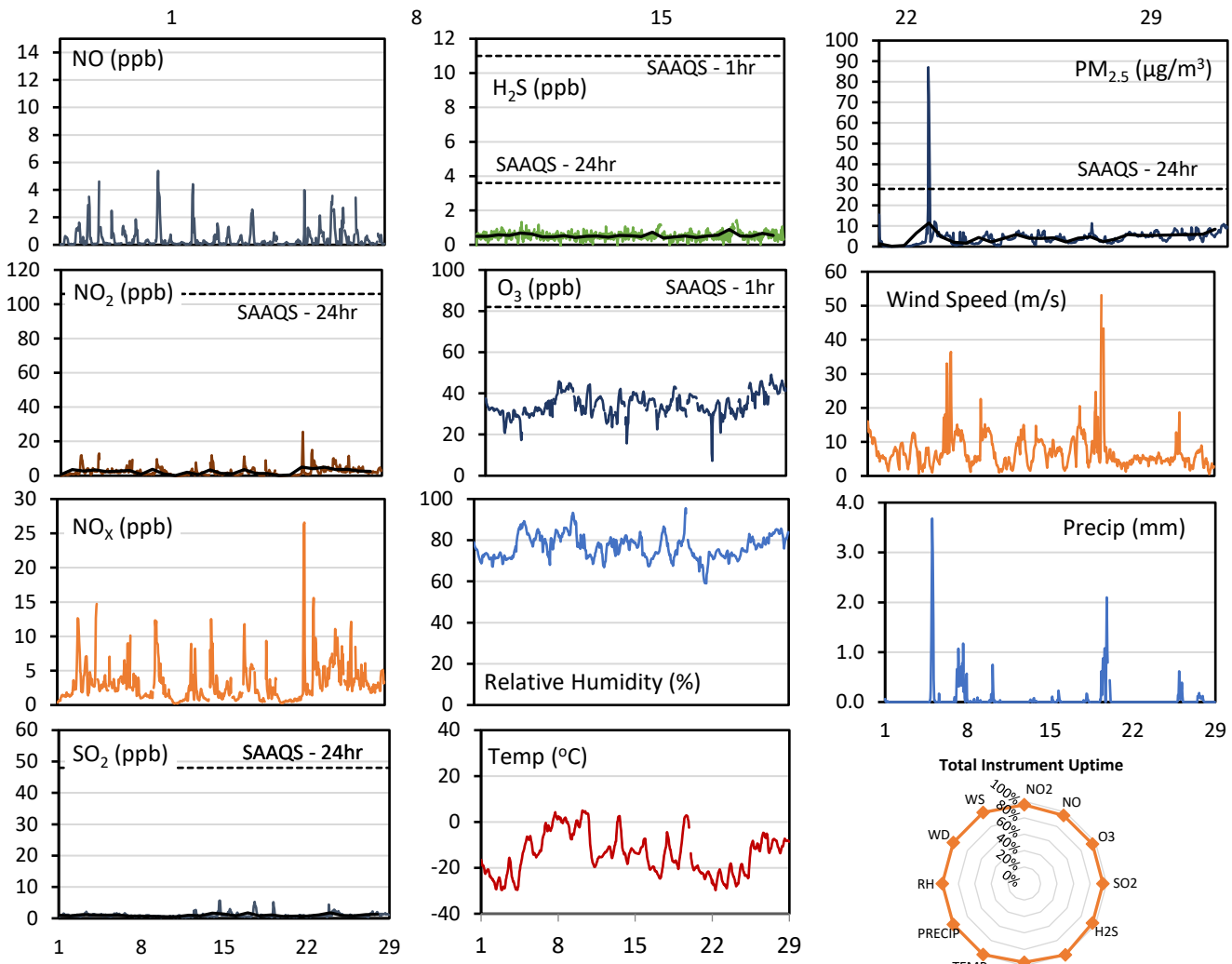
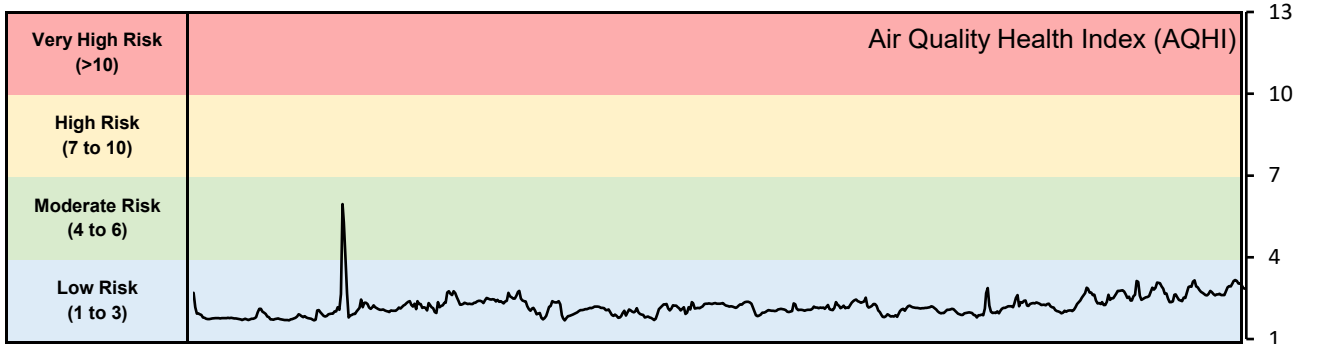


GPAZ Pense Station - February 2022 Summary Report

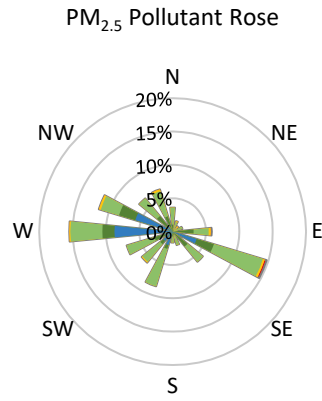
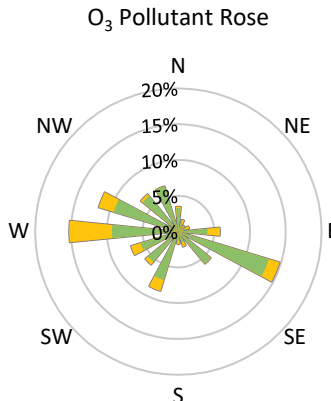
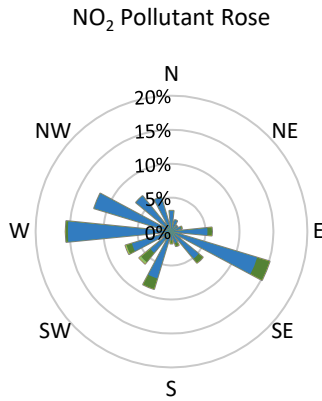
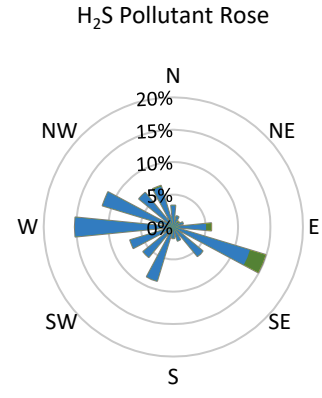
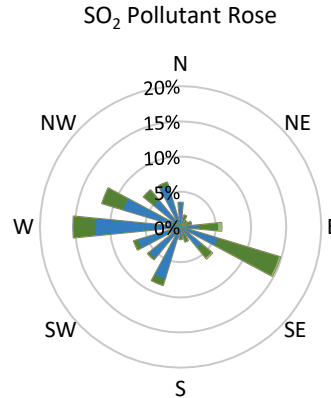
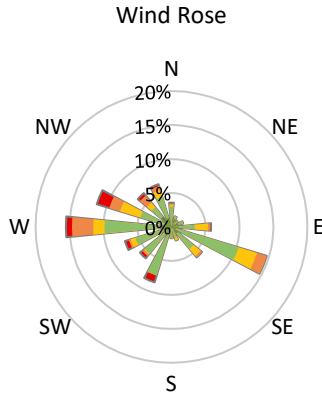
Pollutants		Month Records		24-Hour Records				1-Hour Records			
Name	Conc. Unit	Avg. Conc.	Total Uptime	Maximum		SAAQS Standard	Exceed Days	Maximum		SAAQS Standard	Exceed Hours
				Conc.	Time			Conc.	Time		
NO	ppb	0.4	96%	1.3	Feb-09	-	-	5.4	Feb-09 11:00	-	-
NO ₂	ppb	2.4	96%	5.0	Feb-22	106	0	25.6	Feb-22 03:00	159	0
NO _x	ppb	3.1	96%	6.3	Feb-24	-	-	26.6	Feb-22 03:00	-	-
SO ₂	ppb	1.0	96%	1.8	Feb-24	48	0	5.7	Feb-14 15:00	172	0
H ₂ S	ppb	0.5	96%	0.9	Feb-24	3.6	0	1.4	Feb-24 16:00	11	0
O ₃	ppb	34.5	96%	42.6	Feb-08	-	-	49.1	Feb-27 15:00	82	0
PM _{2.5}	µg/m ³	4.4	100%	11.4	Feb-05	28	0	87.0	Feb-04 23:00	-	-

SAAQS: Saskatchewan Ambient Air Quality Standards



* colored lines indicate 1-hr concentration data for all parameters; solid black lines indicate 24-hr concentrations for PM_{2.5}, NO₂, SO₂, and H₂S

GPAZ Pense Station - February 2022 Summary Report



Parameters	Unit	Color Code for Wind Speed and Pollution Concentration Class						
Wind Speed	m/s	$0.3 \leq WS < 1.4$	$1.4 \leq WS < 3.1$	$3.1 \leq WS < 7.8$	$7.8 \leq WS < 10.8$	$10.8 \leq WS < 13.6$	$WS \geq 13.6$	
SO ₂	ppb	$0 \leq C < 1$	$1 \leq C < 5$	$5 \leq C < 10$	$10 \leq C < 57$	$57 \leq C < 172$	$C \geq 172$	
NO ₂	ppb	$0 \leq C < 5$	$5 \leq C < 15$	$15 \leq C < 30$	$30 \leq C < 100$	$100 \leq C < 212$	$C \geq 212$	
H ₂ S	ppb	$0 \leq C < 1$	$1 \leq C < 3.6$	$3.6 \leq C < 5$	$5 \leq C < 8$	$8 \leq C < 10.8$	$C \geq 10.8$	
O ₃	ppb	$0 \leq C < 10$	$10 \leq C < 20$	$20 \leq C < 40$	$40 \leq C < 60$	$60 \leq C < 82$	$C \geq 82$	
PM _{2.5}	$\mu\text{g}/\text{m}^3$	$0 \leq C < 2$	$2 \leq C < 4$	$4 \leq C < 10$	$10 \leq C < 20$	$20 \leq C < 30$	$C \geq 30$	

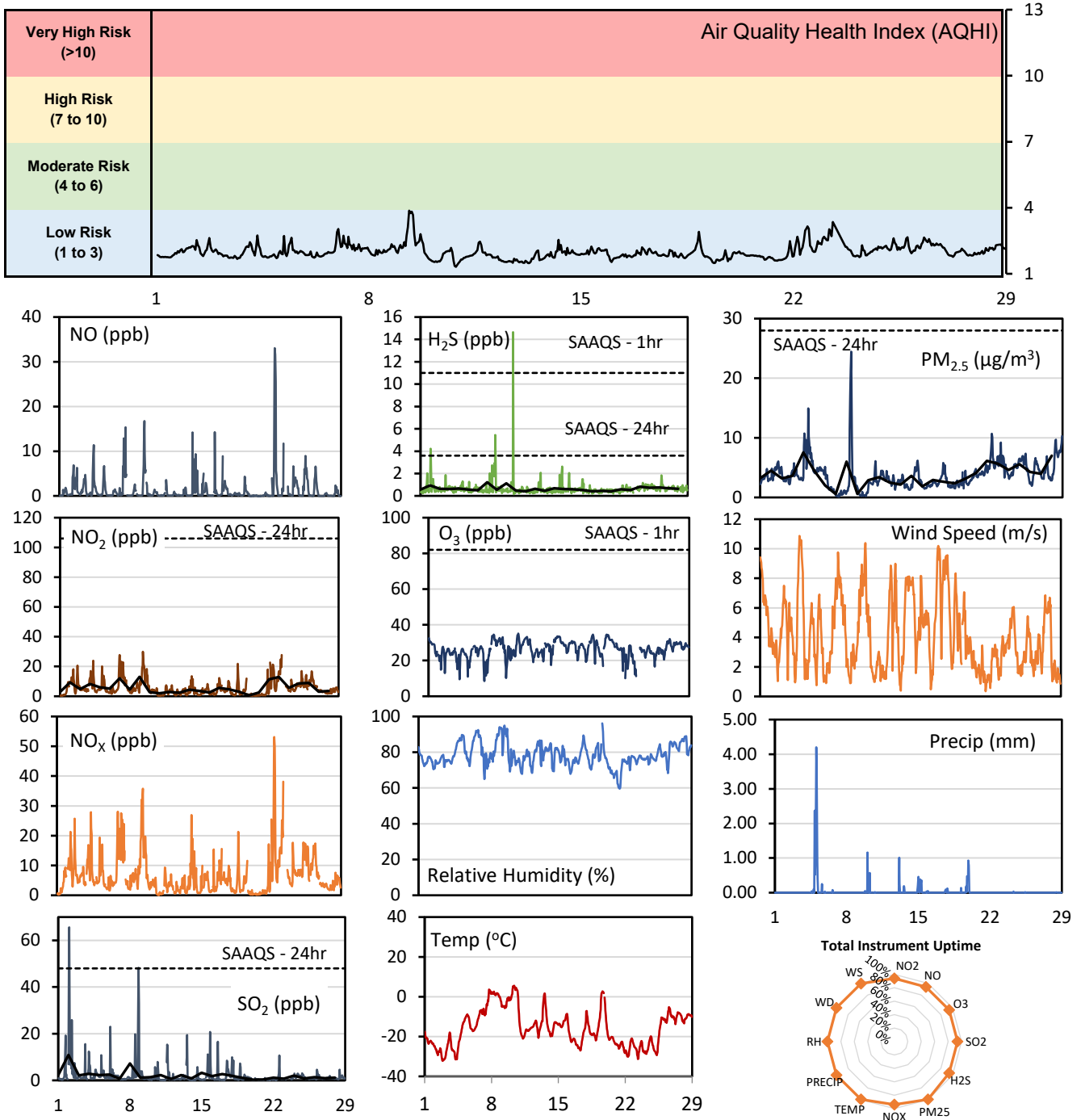
Monthly Update

- Achieved at least 95.0% of scheduled uptime for all parameters
- Downtime of <5% due to routine daily internal zeroes and spans

GPAZ Regina Station - February 2022 Summary Report

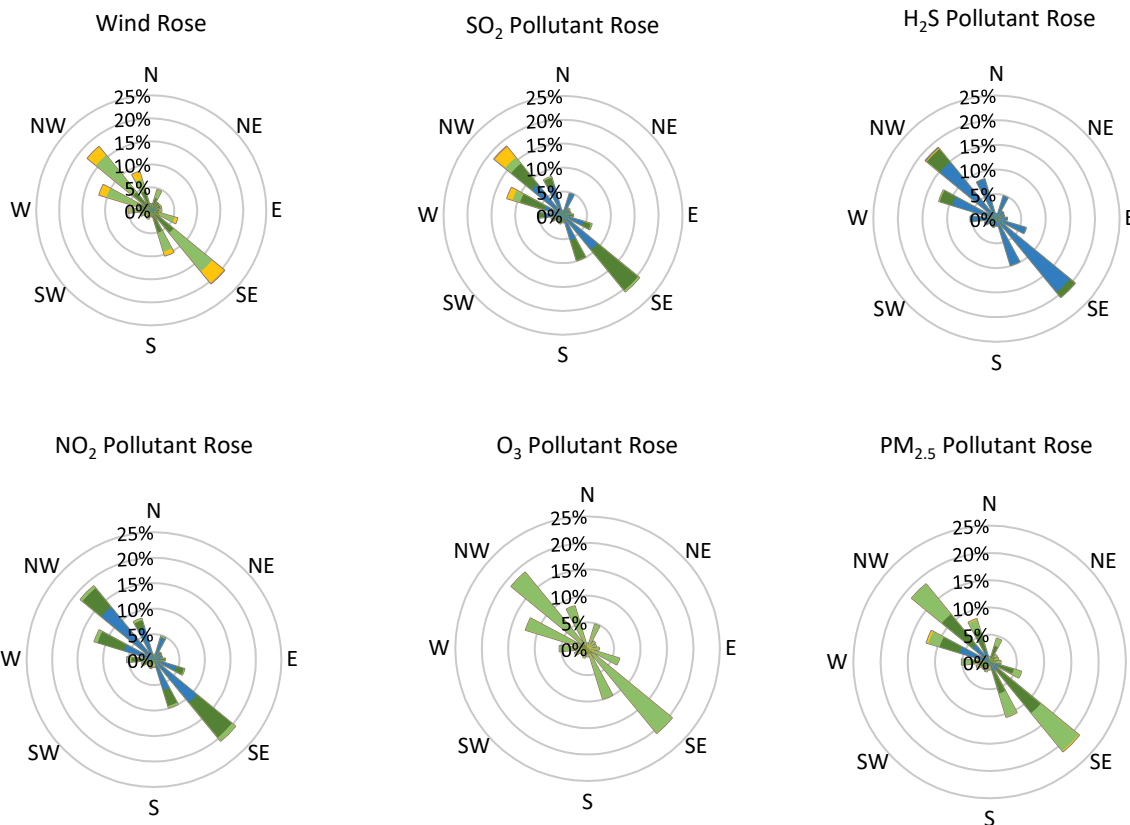
Pollutants		Month Records		24-Hour Records				1-Hour Records			
Name	Conc. Unit	Avg. Conc.	Total Uptime	Maximum		SAAQS Standard	Exceed Days	Maximum		SAAQS Standard	Exceed Hours
				Conc.	Time			Conc.	Time		
NO	ppb	1.3	94%	6.2	Feb-22	-	-	33.1	Feb-22 10:00	-	-
NO ₂	ppb	5.5	94%	13.1	Feb-09	106	0	29.9	Feb-09 08:00	159	0
NO _x	ppb	6.5	94%	17.0	Feb-22	-	-	53.1	Feb-22 10:00	-	-
SO ₂	ppb	2.1	94%	10.9	Feb-02	48	0	65.6	Feb-02 02:00	172	0
H ₂ S	ppb	0.6	94%	1.2	Feb-08	3.6	0	14.7	Feb-10 17:00	11	1
O ₃	ppb	26.2	94%	32.0	Feb-20	-	-	35.1	Feb-10 15:00	82	0
PM _{2.5}	µg/m ³	3.7	100%	7.6	Feb-05	28	0	24.5	Feb-09 10:00	-	-

SAAQS: Saskatchewan Ambient Air Quality Standards



* colored lines indicate 1-hr concentration data for all parameters; solid black lines indicate 24-hr concentrations for PM_{2.5}, NO₂, SO₂, and H₂S

GPAZ Regina Station - February 2022 Summary Report



Parameters	Unit	Color Code for Wind Speed and Pollution Concentration Class					
Wind Speed	m/s	$0.3 \leq WS < 1.4$	$1.4 \leq WS < 3.1$	$3.1 \leq WS < 7.8$	$7.8 \leq WS < 10.8$	$10.8 \leq WS < 13.6$	$WS \geq 13.6$
SO ₂	ppb	$0 \leq C < 1$	$1 \leq C < 5$	$5 \leq C < 10$	$10 \leq C < 57$	$57 \leq C < 172$	$C \geq 172$
NO ₂	ppb	$0 \leq C < 5$	$5 \leq C < 15$	$15 \leq C < 30$	$30 \leq C < 100$	$100 \leq C < 212$	$C \geq 212$
H ₂ S	ppb	$0 \leq C < 1$	$1 \leq C < 3.6$	$3.6 \leq C < 5$	$5 \leq C < 8$	$8 \leq C < 10.8$	$C \geq 10.8$
O ₃	ppb	$0 \leq C < 10$	$10 \leq C < 20$	$20 \leq C < 40$	$40 \leq C < 60$	$60 \leq C < 82$	$C \geq 82$
PM _{2.5}	µg/m ³	$0 \leq C < 2$	$2 \leq C < 4$	$4 \leq C < 10$	$10 \leq C < 20$	$20 \leq C < 30$	$C \geq 30$

Monthly Update

- Achieved more than 94% of scheduled uptime for all parameters
- Downtime of <6.0% due to routine daily internal zeroes and spans, quarterly calibrations

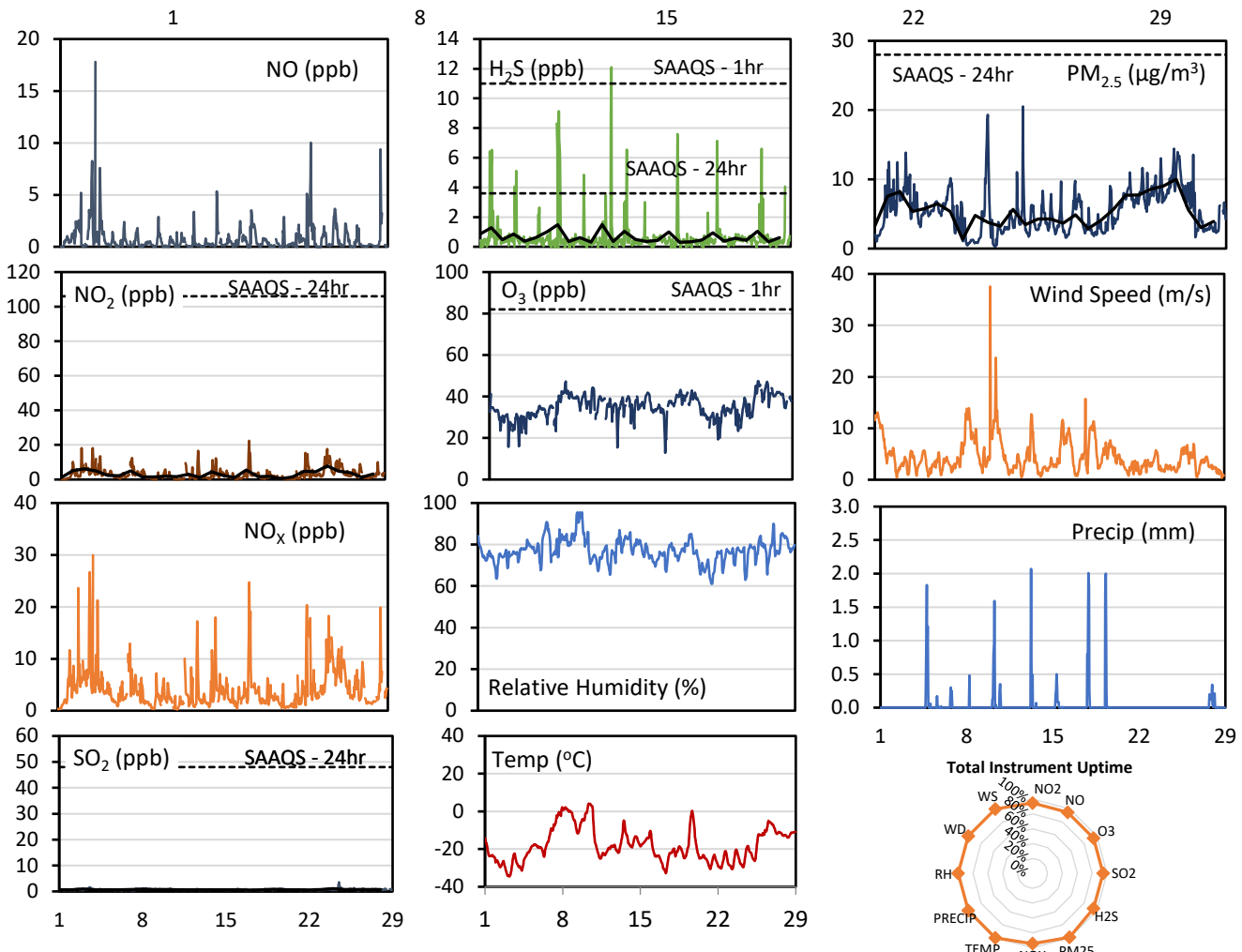
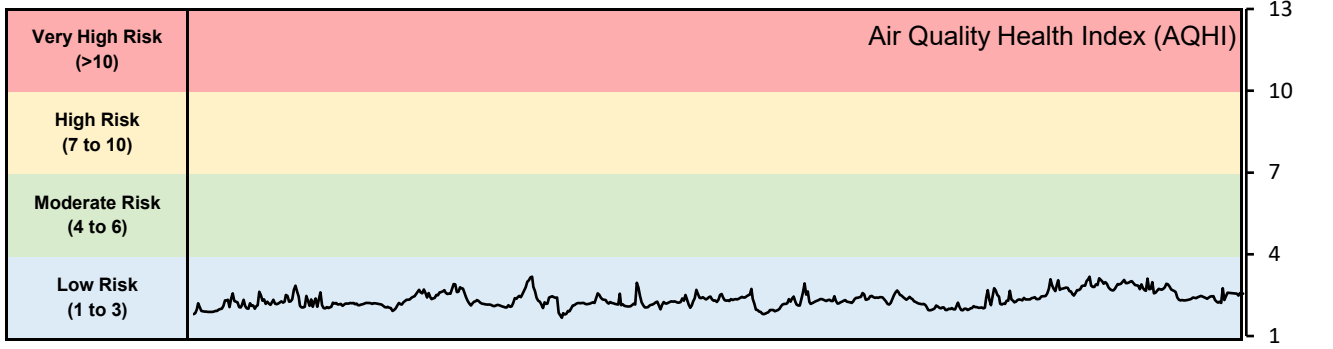
Exceedance Summary (1- Hour Average - Exceedances in Bold)

Exceedance Time	AQHI	NO ₂ ppb	NO ppb	SO ₂ ppb	O ₃ ppb	NO _x ppb	H ₂ S ppb	PM _{2.5} µg/m ³	Temp °C	WD deg	WS m/s
Feb-10 17:00	2.2	5.5	0.8	8.0	32.5	6.0	14.7	0.4	3.1	304.1	8.5

GPAZ Yorkton Station - February 2022 Summary Report

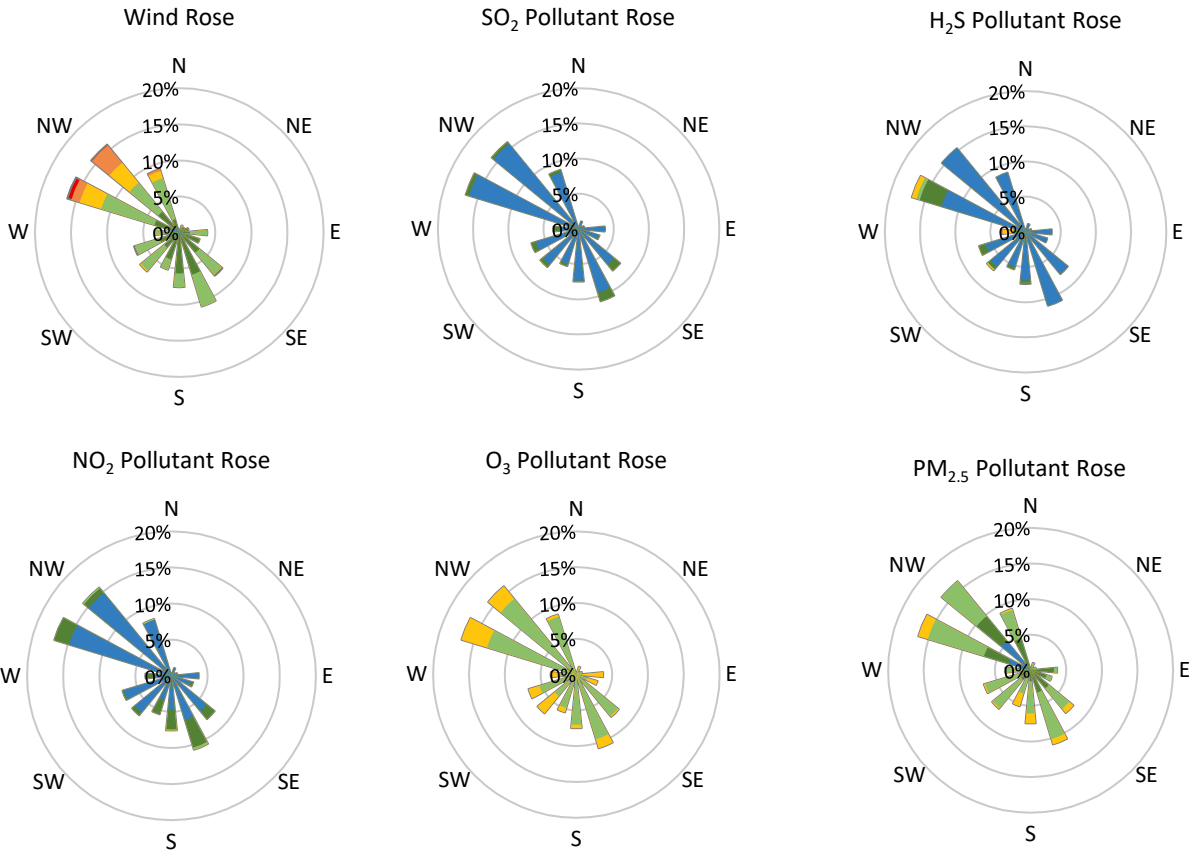
Pollutants		Month Records		24-Hour Records				1-Hour Records			
Name	Conc. Unit	Avg. Conc.	Total Uptime	Maximum		SAAQS Standard	Exceed Days	Maximum		SAAQS Standard	Exceed Hours
				Conc.	Time			Conc.	Time		
NO	ppb	0.7	95%	2.2	Feb-04	-	-	17.8	Feb-04 00:00	-	-
NO ₂	ppb	3.1	95%	7.8	Feb-24	106	0	22.4	Feb-17 06:00	159	0
NO _x	ppb	4.1	95%	9.4	Feb-24	-	-	30.0	Feb-04 00:00	-	-
SO ₂	ppb	0.7	95%	1.1	Feb-24	48	0	3.6	Feb-24 12:00	172	0
H ₂ S	ppb	0.7	95%	1.5	Feb-12	3.6	0	12.1	Feb-12 20:00	11	1
O ₃	ppb	35.0	95%	42.1	Feb-26	-	-	47.5	Feb-25 20:00	82	0
PM _{2.5}	µg/m ³	5.3	99%	10.0	Feb-25	28	0	20.5	Feb-12 19:00	-	-

SAAQS: Saskatchewan Ambient Air Quality Standards



* colored lines indicate 1-hr concentration data for all parameters; solid black lines indicate 24-hr concentrations for PM_{2.5}, NO₂, SO₂, and H₂S

GPAZ Yorkton Station - February 2022 Summary Report



Parameters	Unit	Color Code for Wind Speed and Pollution Concentration Class						
Wind Speed	m/s	$0.3 \leq WS < 1.4$	$1.4 \leq WS < 3.1$	$3.1 \leq WS < 7.8$	$7.8 \leq WS < 10.8$	$10.8 \leq WS < 13.6$	$WS \geq 13.6$	
SO ₂	ppb	$0 \leq C < 1$	$1 \leq C < 5$	$5 \leq C < 10$	$10 \leq C < 57$	$57 \leq C < 172$	$C \geq 172$	
NO ₂	ppb	$0 \leq C < 5$	$5 \leq C < 15$	$15 \leq C < 30$	$30 \leq C < 100$	$100 \leq C < 212$	$C \geq 212$	
H ₂ S	ppb	$0 \leq C < 1$	$1 \leq C < 3.6$	$3.6 \leq C < 5$	$5 \leq C < 8$	$8 \leq C < 10.8$	$C \geq 10.8$	
O ₃	ppb	$0 \leq C < 10$	$10 \leq C < 20$	$20 \leq C < 40$	$40 \leq C < 60$	$60 \leq C < 82$	$C \geq 82$	
PM _{2.5}	µg/m ³	$0 \leq C < 2$	$2 \leq C < 4$	$4 \leq C < 10$	$10 \leq C < 20$	$20 \leq C < 30$	$C \geq 30$	

Monthly Update

- Achieved at least 98% of scheduled uptime for all parameters
- Downtime of <2% due to routine daily internal zeroes and spans, and quarterly calibrations

Exceedance Summary (1- Hour Average - Exceedances in Bold)

Exceedance Time	AQHI	NO ₂	NO	SO ₂	O ₃	NO _x	H ₂ S	PM _{2.5}	Temp	WD	WS
	-	ppb	ppb	ppb	ppb	ppb	ppb	µg/m ³	°C	deg	m/s
Feb-12 20:00	2.8	16.6	0.3	0.7	15.5	17.2	12.1	12.2	-20.7	183.1	1.1