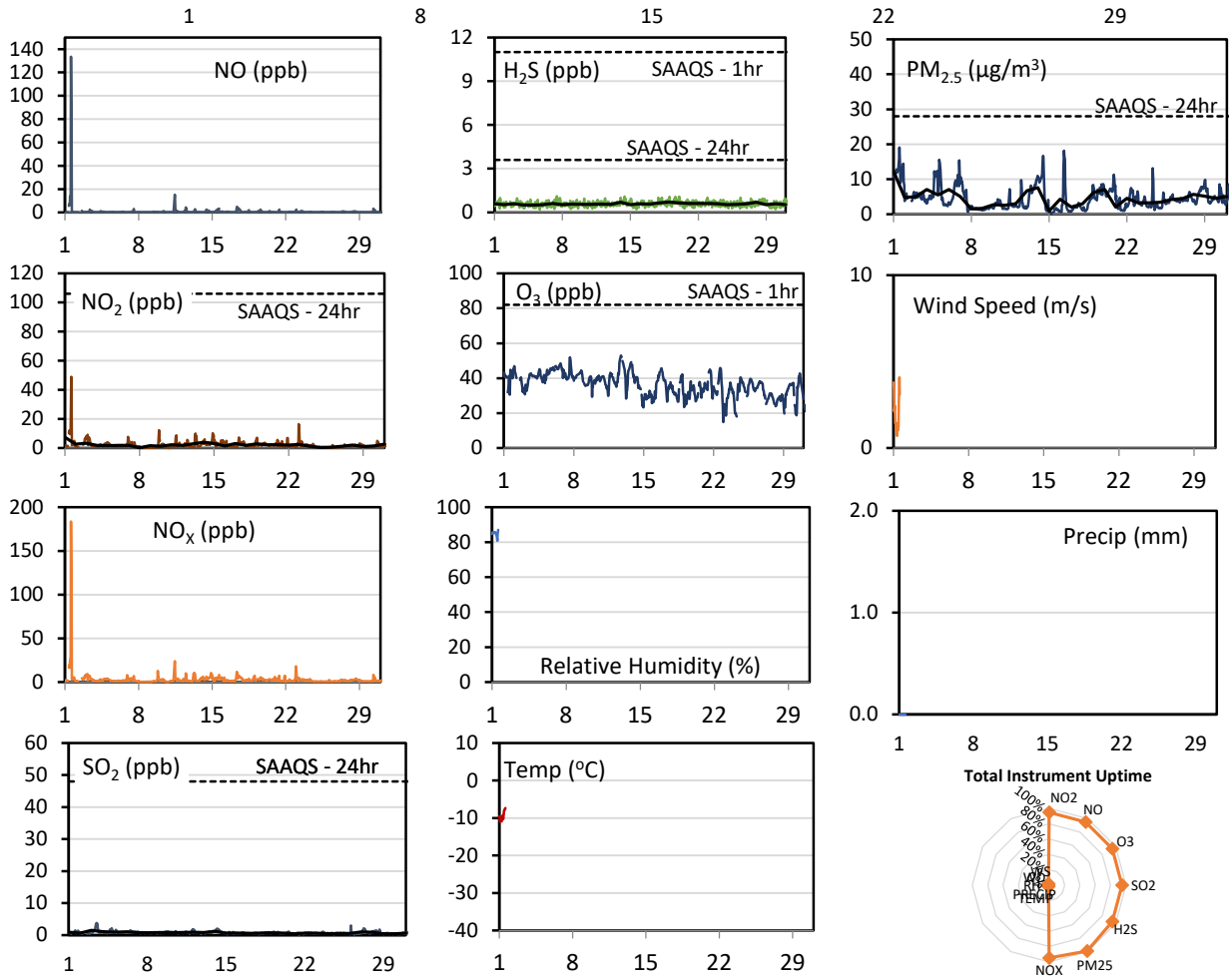
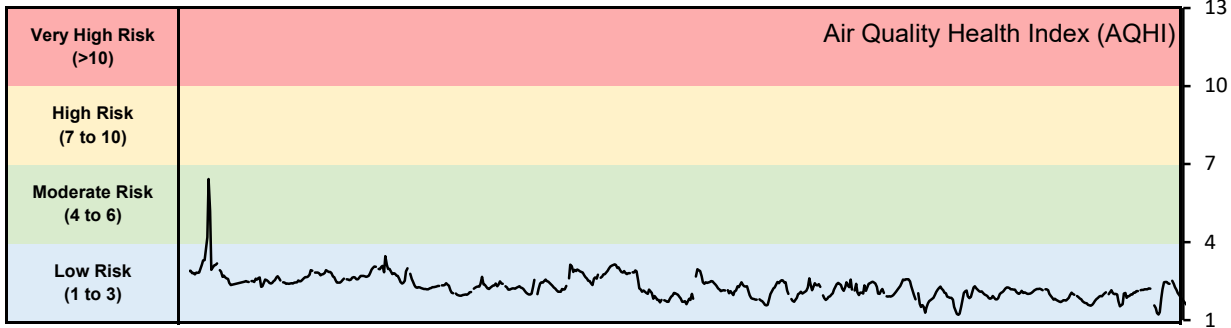


GPAZ Pense Station - March 2022 Summary Report

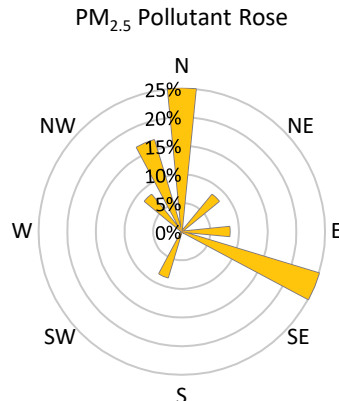
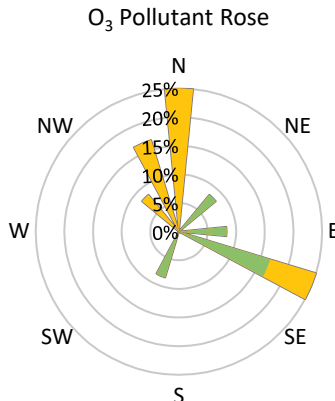
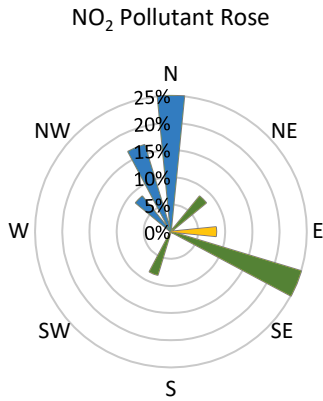
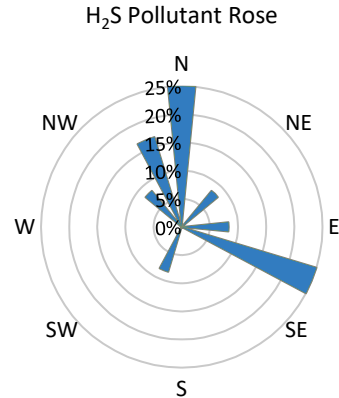
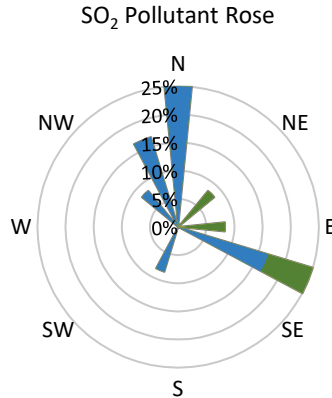
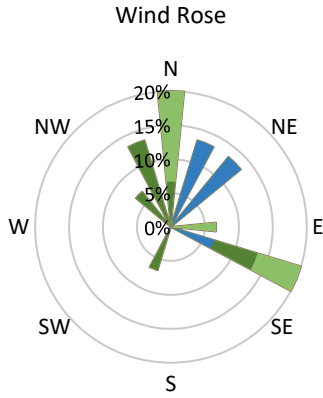
| Pollutants | | Month Records | | 24-Hour Records | | | | 1-Hour Records | | | |
|-------------------|-------------------|---------------|--------------|-----------------|--------|----------------|-------------|----------------|--------------|----------------|--------------|
| Name | Conc. Unit | Avg. Conc. | Total Uptime | Maximum | | SAAQS Standard | Exceed Days | Maximum | | SAAQS Standard | Exceed Hours |
| | | | | Conc. | Time | | | Conc. | Time | | |
| NO | ppb | 0.8 | 95% | 11.0 | Mar-01 | - | - | 133.5 | Mar-01 14:00 | - | - |
| NO ₂ | ppb | 2.1 | 95% | 7.4 | Mar-01 | 106 | 0 | 48.9 | Mar-01 14:00 | 159 | 0 |
| NO _x | ppb | 3.0 | 95% | 18.8 | Mar-01 | - | - | 183.6 | Mar-01 14:00 | - | - |
| SO ₂ | ppb | 0.8 | 95% | 1.5 | Mar-03 | 48 | 0 | 3.8 | Mar-03 11:00 | 172 | 0 |
| H ₂ S | ppb | 0.6 | 95% | 0.7 | Mar-19 | 3.6 | 0 | 1.1 | Mar-07 10:00 | 11 | 0 |
| O ₃ | ppb | 36.1 | 95% | 45.6 | Mar-06 | - | - | 53.0 | Mar-12 17:00 | 82 | 0 |
| PM _{2.5} | µg/m ³ | 4.6 | 99% | 12.3 | Mar-01 | 28 | 0 | 19.1 | Mar-01 13:00 | - | - |

SAAQS: Saskatchewan Ambient Air Quality Standards



* colored lines indicate 1-hr concentration data for all parameters; solid black lines indicate 24-hr concentrations for PM_{2.5}, NO₂, SO₂, and H₂S

GPAZ Pense Station - March 2022 Summary Report



| Parameters | Unit | Color Code for Wind Speed and Pollution Concentration Class | | | | | | |
|-------------------|--------------------------|---|---------------------|---------------------|----------------------|-----------------------|----------------|--|
| Wind Speed | m/s | $0.3 \leq WS < 1.4$ | $1.4 \leq WS < 3.1$ | $3.1 \leq WS < 7.8$ | $7.8 \leq WS < 10.8$ | $10.8 \leq WS < 13.6$ | $WS \geq 13.6$ | |
| SO ₂ | ppb | $0 \leq C < 1$ | $1 \leq C < 5$ | $5 \leq C < 10$ | $10 \leq C < 57$ | $57 \leq C < 172$ | $C \geq 172$ | |
| NO ₂ | ppb | $0 \leq C < 5$ | $5 \leq C < 15$ | $15 \leq C < 30$ | $30 \leq C < 100$ | $100 \leq C < 212$ | $C \geq 212$ | |
| H ₂ S | ppb | $0 \leq C < 1$ | $1 \leq C < 3.6$ | $3.6 \leq C < 5$ | $5 \leq C < 8$ | $8 \leq C < 10.8$ | $C \geq 10.8$ | |
| O ₃ | ppb | $0 \leq C < 10$ | $10 \leq C < 20$ | $20 \leq C < 40$ | $40 \leq C < 60$ | $60 \leq C < 82$ | $C \geq 82$ | |
| PM _{2.5} | $\mu\text{g}/\text{m}^3$ | $0 \leq C < 2$ | $2 \leq C < 4$ | $4 \leq C < 10$ | $10 \leq C < 20$ | $20 \leq C < 30$ | $C \geq 30$ | |

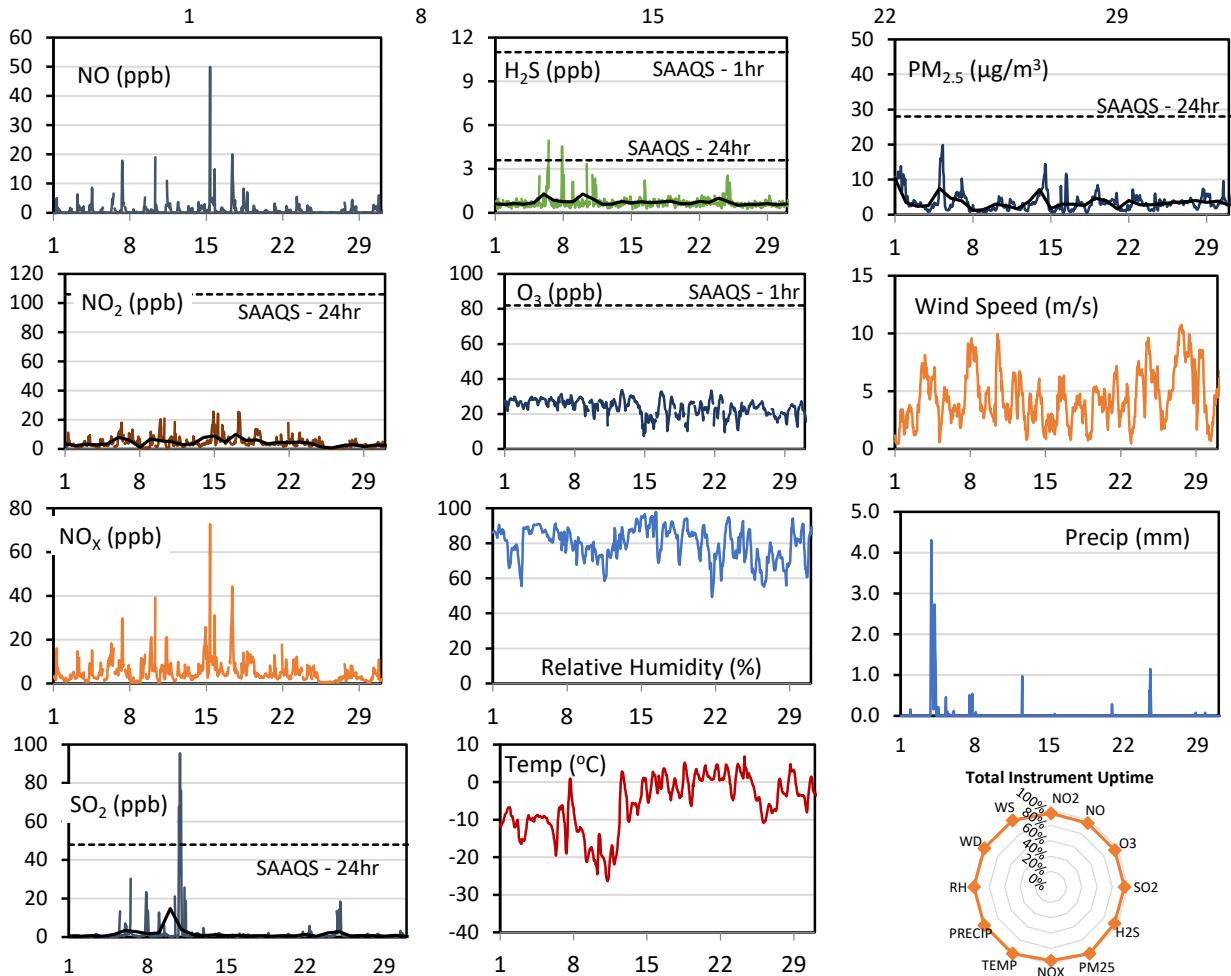
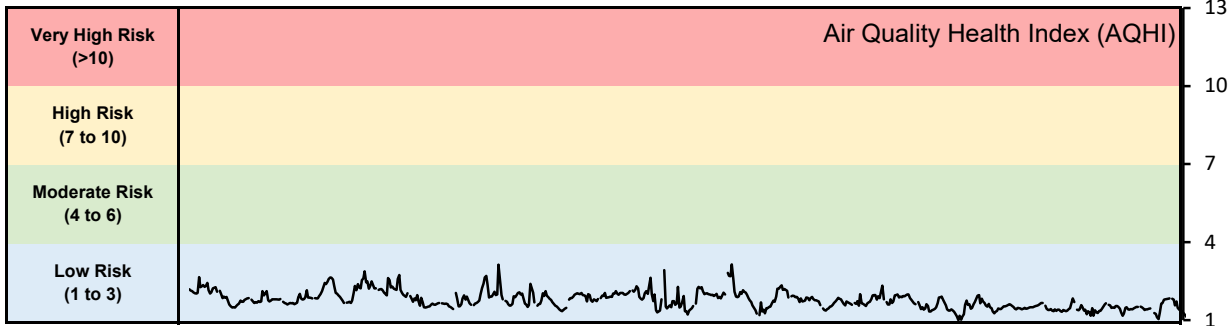
Monthly Update

- Achieved > 94% of scheduled uptime for all parameters except weather parameters
- Downtime of <5% due to routine daily internal zeroes and spans, and quarterly calibrations
- Weather station down due to damage by snow clearing, this resulted in only 2% valid data from the sensor

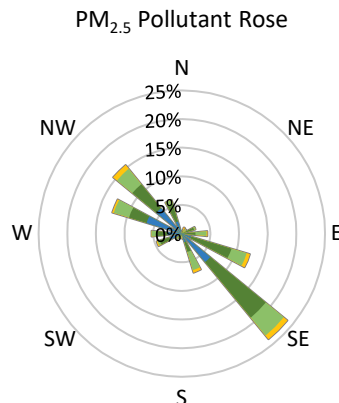
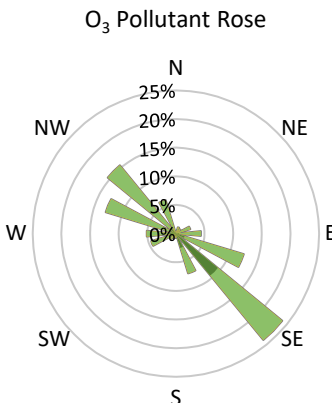
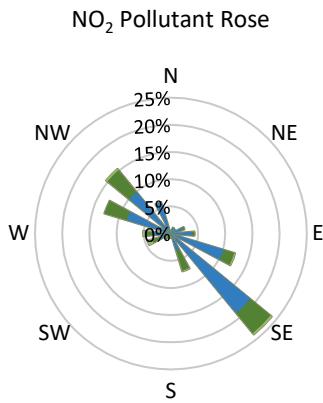
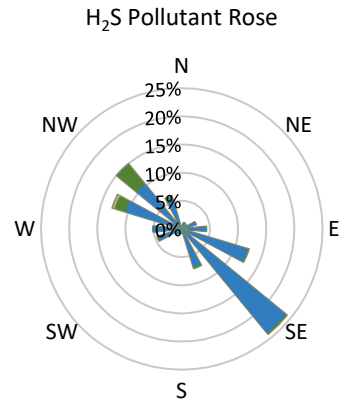
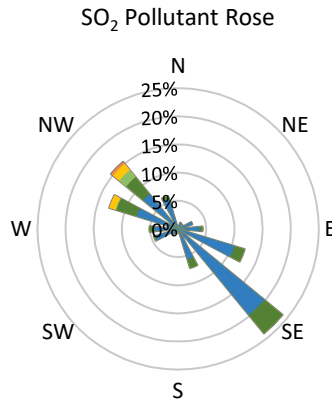
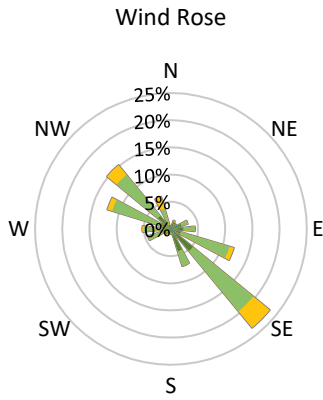
GPAZ Regina Station - March 2022 Summary Report

| Pollutants | | Month Records | | 24-Hour Records | | | | 1-Hour Records | | | |
|-------------------|-------------------|---------------|--------------|-----------------|--------|----------------|-------------|----------------|--------------|----------------|--------------|
| Name | Conc. Unit | Avg. Conc. | Total Uptime | Maximum | | SAAQS Standard | Exceed Days | Maximum | | SAAQS Standard | Exceed Hours |
| | | | | Conc. | Time | | | Conc. | Time | | |
| NO | ppb | 0.9 | 96% | 4.6 | Mar-15 | - | - | 49.9 | Mar-15 08:00 | - | - |
| NO ₂ | ppb | 4.3 | 96% | 9.9 | Mar-17 | 106 | 0 | 25.6 | Mar-14 22:00 | 159 | 0 |
| NO _x | ppb | 5.1 | 96% | 13.2 | Mar-15 | - | - | 72.7 | Mar-15 08:00 | - | - |
| SO ₂ | ppb | 1.6 | 96% | 14.8 | Mar-10 | 48 | 0 | 95.4 | Mar-10 21:00 | 172 | 0 |
| H ₂ S | ppb | 0.7 | 95% | 1.3 | Mar-10 | 3.6 | 0 | 10.2 | Mar-10 22:00 | 11 | 0 |
| O ₃ | ppb | 23.7 | 96% | 28.1 | Mar-04 | - | - | 33.7 | Mar-12 17:00 | 82 | 0 |
| PM _{2.5} | µg/m ³ | 3.6 | 100% | 10.3 | Mar-01 | 28 | 0 | 19.9 | Mar-05 07:00 | - | - |

SAAQS: Saskatchewan Ambient Air Quality Standards



* colored lines indicate 1-hr concentration data for all parameters; solid black lines indicate 24-hr concentrations for PM_{2.5}, NO₂, SO₂, and H₂S



| Parameters | Unit | Color Code for Wind Speed and Pollution Concentration Class | | | | | | |
|-------------------|-------------------|---|---------------------|---------------------|----------------------|-----------------------|----------------|--|
| Wind Speed | m/s | $0.3 \leq WS < 1.4$ | $1.4 \leq WS < 3.1$ | $3.1 \leq WS < 7.8$ | $7.8 \leq WS < 10.8$ | $10.8 \leq WS < 13.6$ | $WS \geq 13.6$ | |
| SO ₂ | ppb | $0 \leq C < 1$ | $1 \leq C < 5$ | $5 \leq C < 10$ | $10 \leq C < 57$ | $57 \leq C < 172$ | $C \geq 172$ | |
| NO ₂ | ppb | $0 \leq C < 5$ | $5 \leq C < 15$ | $15 \leq C < 30$ | $30 \leq C < 100$ | $100 \leq C < 212$ | $C \geq 212$ | |
| H ₂ S | ppb | $0 \leq C < 1$ | $1 \leq C < 3.6$ | $3.6 \leq C < 5$ | $5 \leq C < 8$ | $8 \leq C < 10.8$ | $C \geq 10.8$ | |
| O ₃ | ppb | $0 \leq C < 10$ | $10 \leq C < 20$ | $20 \leq C < 40$ | $40 \leq C < 60$ | $60 \leq C < 82$ | $C \geq 82$ | |
| PM _{2.5} | µg/m ³ | $0 \leq C < 2$ | $2 \leq C < 4$ | $4 \leq C < 10$ | $10 \leq C < 20$ | $20 \leq C < 30$ | $C \geq 30$ | |

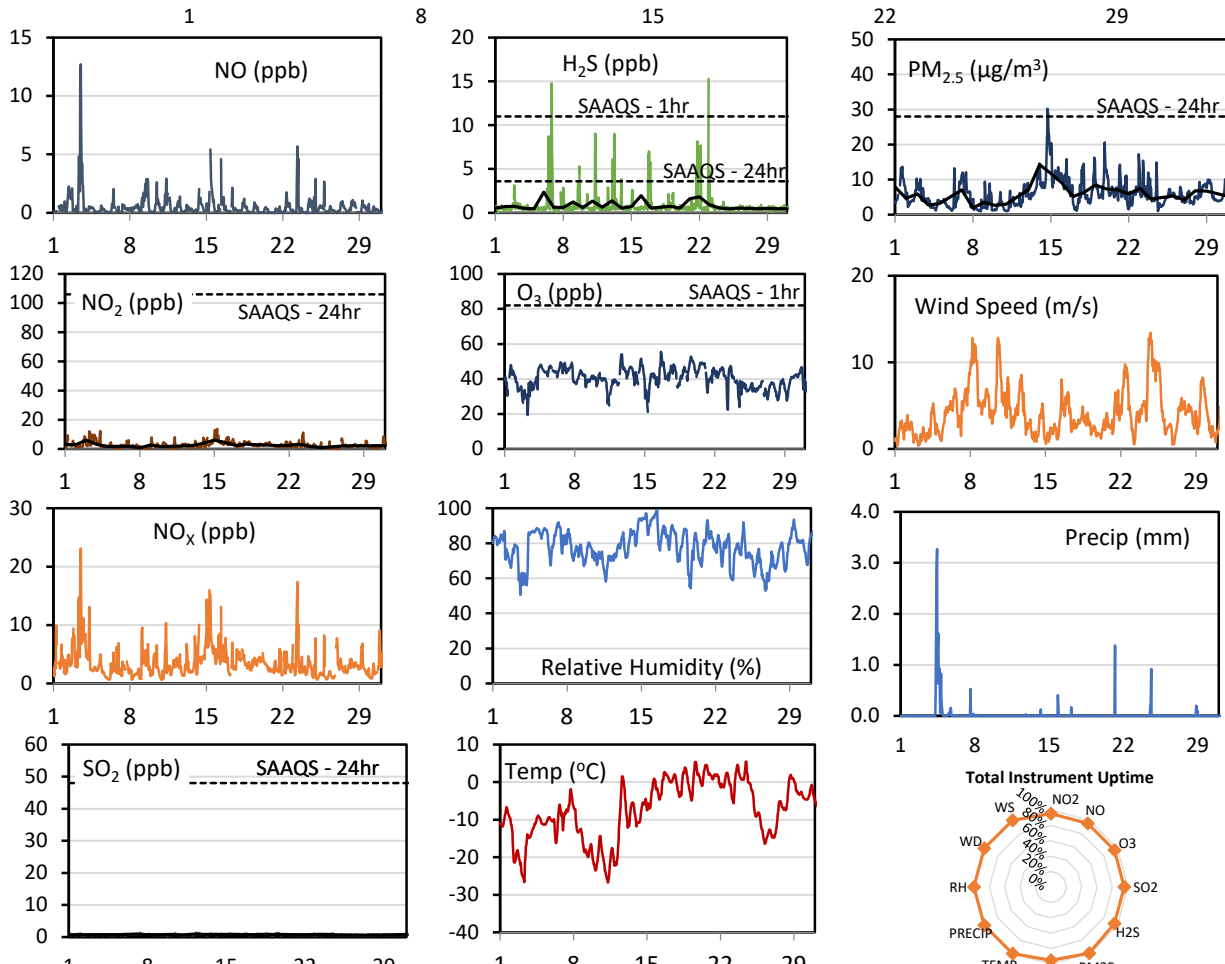
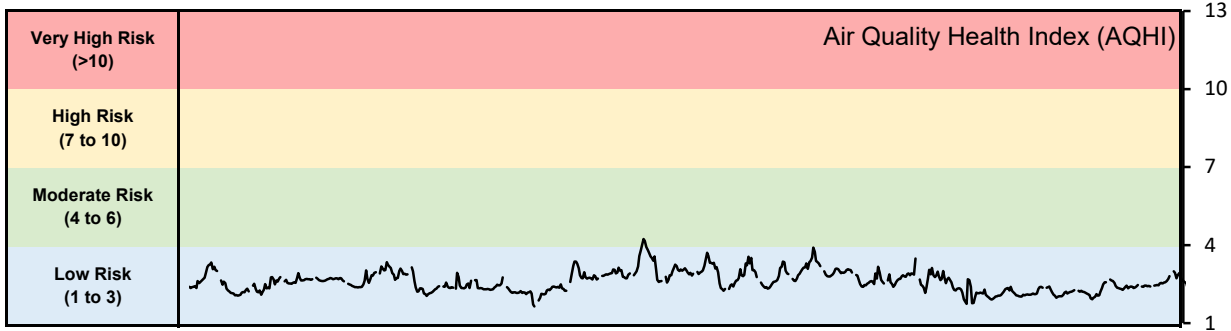
Monthly Update

- Achieved > 95% of scheduled uptime for all parameters
- Downtime of <5% due to routine daily internal zeroes and spans

GPAZ Yorkton Station - March 2022 Summary Report

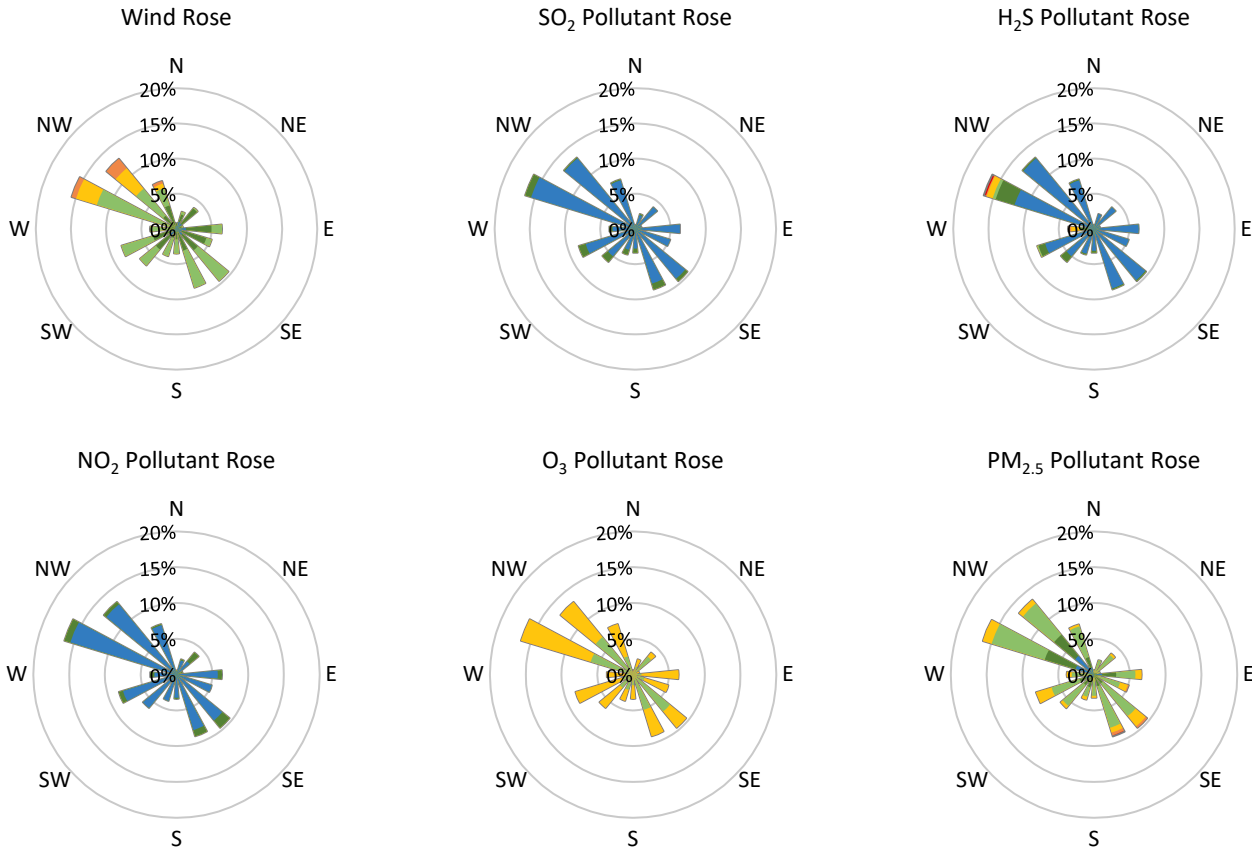
| Pollutants | | Month Records | | 24-Hour Records | | | | 1-Hour Records | | | |
|-------------------|-------------------|---------------|--------------|-----------------|--------|----------------|-------------|----------------|--------------|----------------|--------------|
| Name | Conc. Unit | Avg. Conc. | Total Uptime | Maximum | | SAAQS Standard | Exceed Days | Maximum | | SAAQS Standard | Exceed Hours |
| | | | | Conc. | Time | | | Conc. | Time | | |
| NO | ppb | 0.5 | 95% | 2.5 | Mar-03 | - | - | 12.7 | Mar-03 12:00 | - | - |
| NO ₂ | ppb | 2.6 | 95% | 6.0 | Mar-15 | 106 | 0 | 13.8 | Mar-15 07:00 | 159 | 0 |
| NO _x | ppb | 3.5 | 95% | 8.8 | Mar-03 | - | - | 23.1 | Mar-03 12:00 | - | - |
| SO ₂ | ppb | 0.8 | 95% | 0.9 | Mar-12 | 48 | 0 | 1.4 | Mar-12 07:00 | 172 | 0 |
| H ₂ S | ppb | 0.8 | 95% | 2.4 | Mar-06 | 3.6 | 0 | 15.3 | Mar-22 23:00 | 11 | 2 |
| O ₃ | ppb | 40.2 | 95% | 47.1 | Mar-19 | - | - | 55.5 | Mar-16 15:00 | 82 | 0 |
| PM _{2.5} | µg/m ³ | 6.0 | 100% | 14.3 | Mar-14 | 28 | 0 | 30.2 | Mar-14 17:00 | - | - |

SAAQS: Saskatchewan Ambient Air Quality Standards



* colored lines indicate 1-hr concentration data for all parameters; solid black lines indicate 24-hr concentrations for PM_{2.5}, NO₂, SO₂, and H₂S

GPAZ Yorkton Station - March 2022 Summary Report



| Parameters | Unit | Color Code for Wind Speed and Pollution Concentration Class | | | | | | |
|-------------------|-------------------|---|---------------------|---------------------|----------------------|-----------------------|----------------|--|
| | | $0.3 \leq WS < 1.4$ | $1.4 \leq WS < 3.1$ | $3.1 \leq WS < 7.8$ | $7.8 \leq WS < 10.8$ | $10.8 \leq WS < 13.6$ | $WS \geq 13.6$ | |
| SO ₂ | ppb | $0 \leq C < 1$ | $1 \leq C < 5$ | $5 \leq C < 10$ | $10 \leq C < 57$ | $57 \leq C < 172$ | $C \geq 172$ | |
| NO ₂ | ppb | $0 \leq C < 5$ | $5 \leq C < 15$ | $15 \leq C < 30$ | $30 \leq C < 100$ | $100 \leq C < 212$ | $C \geq 212$ | |
| H ₂ S | ppb | $0 \leq C < 1$ | $1 \leq C < 3.6$ | $3.6 \leq C < 5$ | $5 \leq C < 8$ | $8 \leq C < 10.8$ | $C \geq 10.8$ | |
| O ₃ | ppb | $0 \leq C < 10$ | $10 \leq C < 20$ | $20 \leq C < 40$ | $40 \leq C < 60$ | $60 \leq C < 82$ | $C \geq 82$ | |
| PM _{2.5} | µg/m ³ | $0 \leq C < 2$ | $2 \leq C < 4$ | $4 \leq C < 10$ | $10 \leq C < 20$ | $20 \leq C < 30$ | $C \geq 30$ | |

Monthly Update

- Achieved > 95% of scheduled uptime for all parameters
- Downtime of <5% due to routine daily internal zeroes and spans

Exceedance Summary (1- Hour Average - Exceedances in Bold)

| Exceedance Time | AQHI | NO ₂ ppb | NO ppb | SO ₂ ppb | O ₃ ppb | NO _x ppb | H ₂ S ppb | PM _{2.5} µg/m ³ | Temp °C | WD deg | WS m/s |
|-----------------|------|------------------------|-----------|------------------------|-----------------------|------------------------|-------------------------|--|------------|-----------|-----------|
| Mar-06 19:00 | 3.2 | 5.6 | 0.2 | 0.9 | 43.3 | 6.3 | 14.8 | 9.4 | (8.0) | 281.8 | 4.3 |
| Mar-22 23:00 | - | 6.0 | 0.2 | 0.6 | 41.8 | 6.6 | 15.3 | 14.2 | (0.7) | 283.1 | 3.6 |