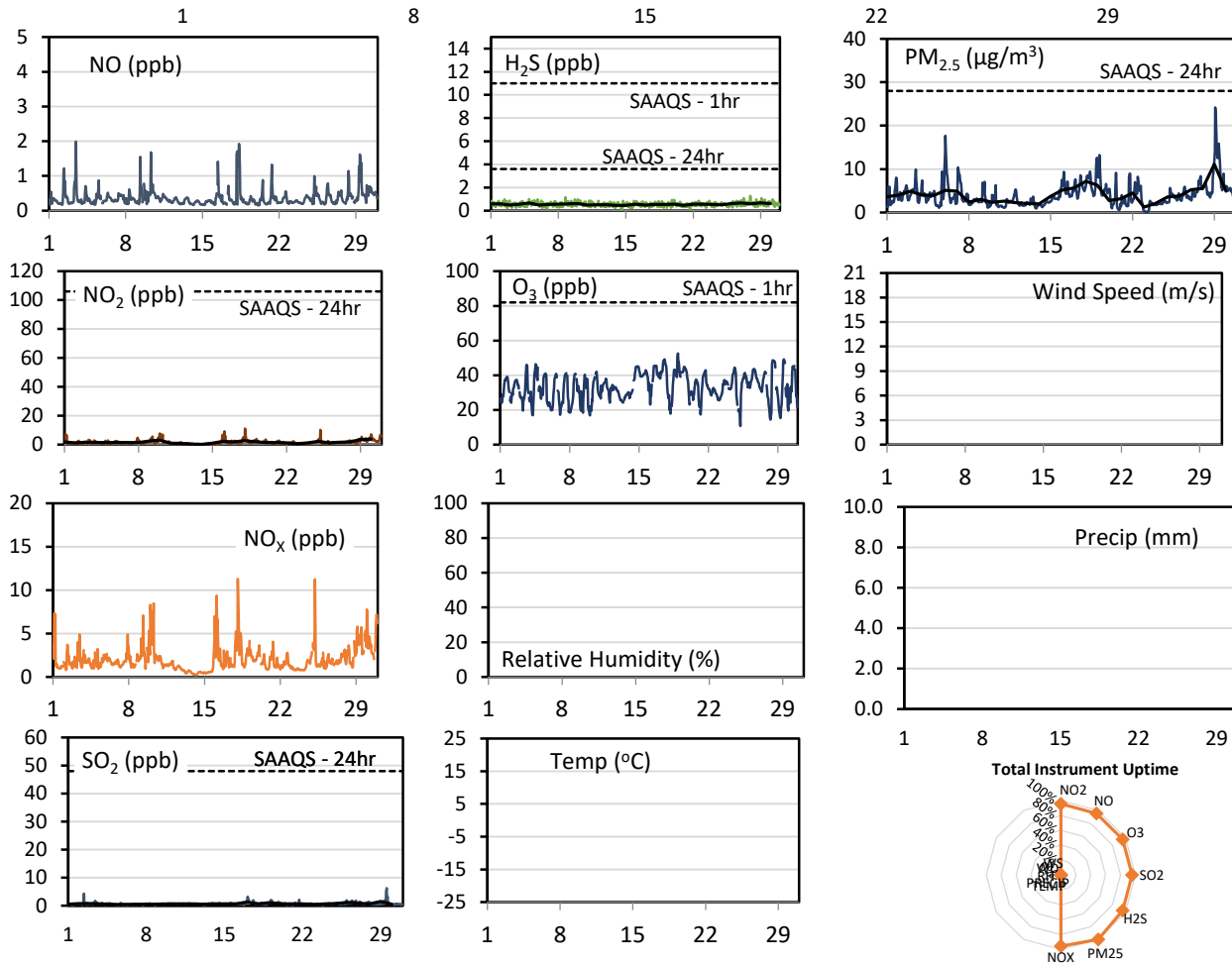
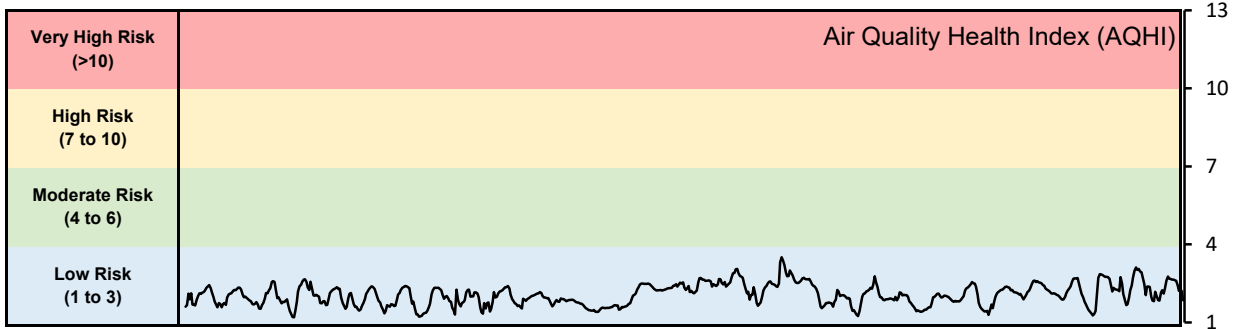


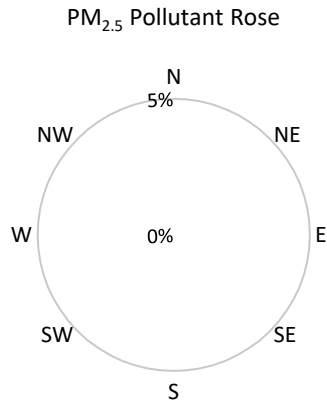
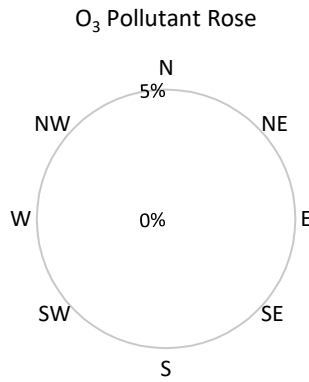
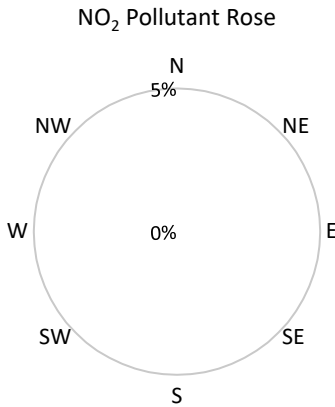
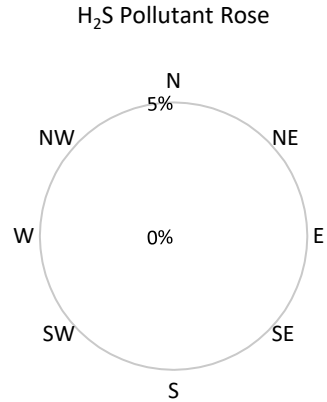
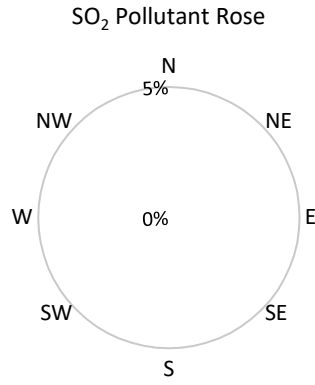
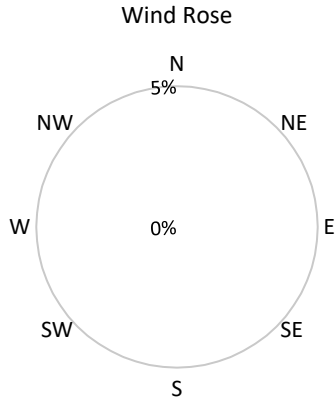
GPAZ Pense Station - April 2022 Summary Report

Pollutants		Month Records		24-Hour Records				1-Hour Records			
Name	Conc. Unit	Avg. Conc.	Total Uptime	Maximum		SAAQS Standard	Exceed Days	Maximum		SAAQS Standard	Exceed Hours
				Conc.	Time			Conc.	Time		
NO	ppb	0.4	96%	0.6	Apr-29	-	-	2.0	Apr-03 11:00	-	-
NO ₂	ppb	1.7	96%	3.8	Apr-30	106	0	11.1	Apr-18 02:00	159	0
NO _x	ppb	2.0	96%	4.3	Apr-30	-	-	11.3	Apr-18 02:00	-	-
SO ₂	ppb	0.7	96%	1.5	Apr-29	48	0	6.3	Apr-29 13:00	172	0
H ₂ S	ppb	0.6	96%	0.7	Apr-29	3.6	0	1.3	Apr-27 22:00	11	0
O ₃	ppb	33.3	96%	41.9	Apr-19	-	-	52.6	Apr-18 22:00	82	0
PM _{2.5}	µg/m ³	4.1	100%	11.1	Apr-29	28	0	24.2	Apr-29 02:00	-	-

SAAQS: Saskatchewan Ambient Air Quality Standards



* colored lines indicate 1-hr concentration data for all parameters; solid black lines indicate 24-hr concentrations for PM_{2.5}, NO₂, SO₂, and H₂S



Parameters	Unit	Color Code for Wind Speed and Pollution Concentration Class					
		0.3 ≤ WS < 1.4	1.4 ≤ WS < 3.1	3.1 ≤ WS < 7.8	7.8 ≤ WS < 10.8	10.8 ≤ WS < 13.6	WS ≥ 13.6
SO ₂	ppb	0 ≤ C < 1	1 ≤ C < 5	5 ≤ C < 10	10 ≤ C < 57	57 ≤ C < 172	C ≥ 172
NO ₂	ppb	0 ≤ C < 5	5 ≤ C < 15	15 ≤ C < 30	30 ≤ C < 100	100 ≤ C < 212	C ≥ 212
H ₂ S	ppb	0 ≤ C < 1	1 ≤ C < 3.6	3.6 ≤ C < 5	5 ≤ C < 8	8 ≤ C < 10.8	C ≥ 10.8
O ₃	ppb	0 ≤ C < 10	10 ≤ C < 20	20 ≤ C < 40	40 ≤ C < 60	60 ≤ C < 82	C ≥ 82
PM _{2.5}	µg/m ³	0 ≤ C < 2	2 ≤ C < 4	4 ≤ C < 10	10 ≤ C < 20	20 ≤ C < 30	C ≥ 30

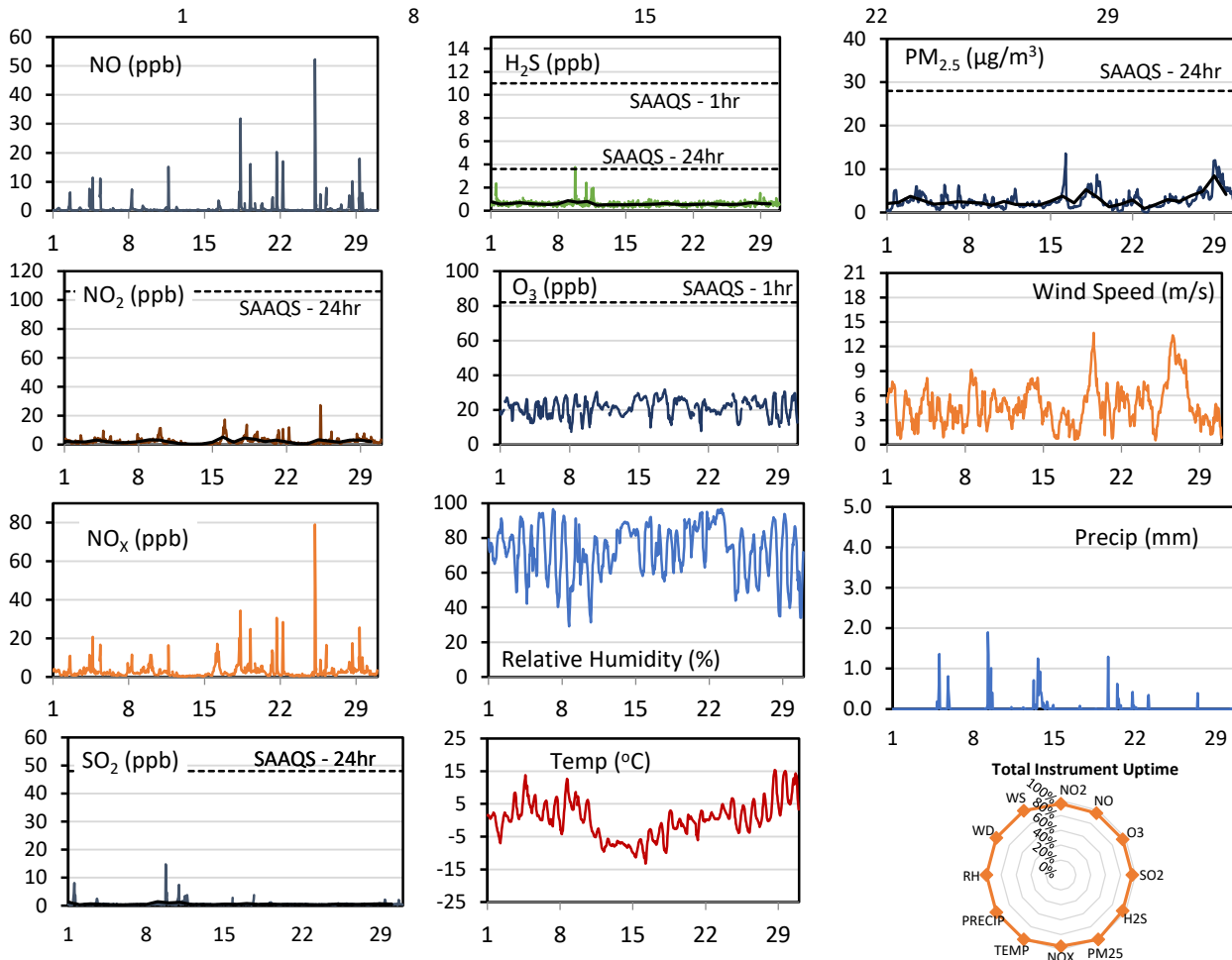
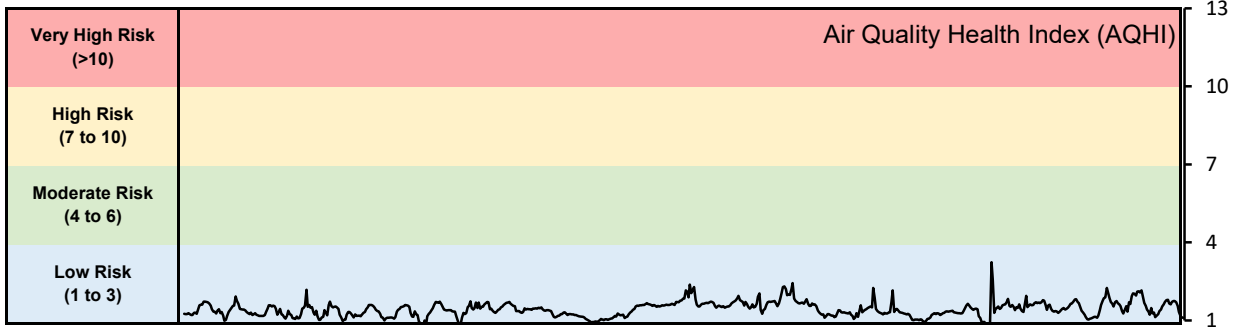
Monthly Update

- Achieved > 95% of scheduled uptime for all parameters, except weather parameters (0.0%)
- Downtime of <95% due to routine daily internal zeroes and spans, weather sensor damaged and not replaced

GPAZ Regina Station - April 2022 Summary Report

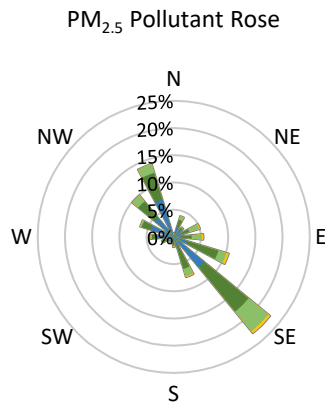
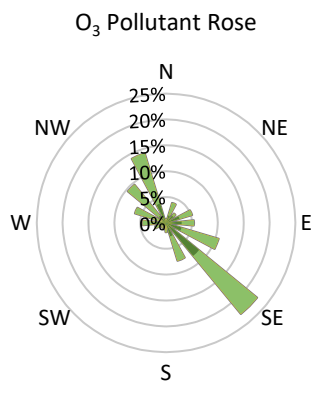
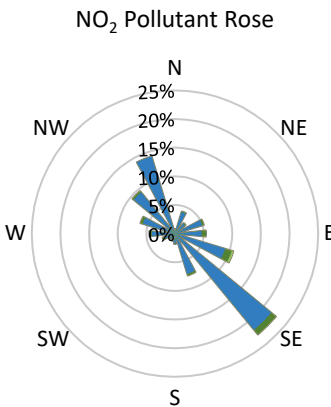
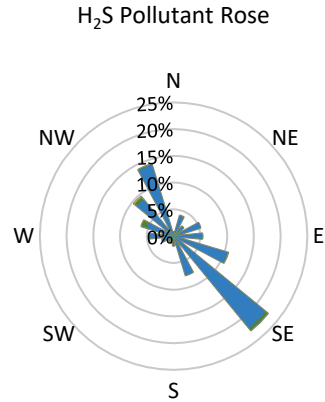
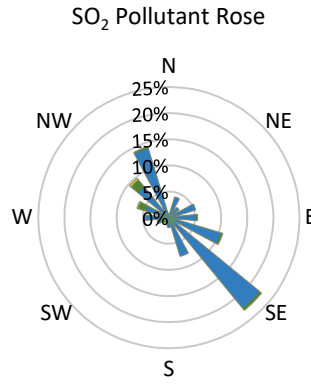
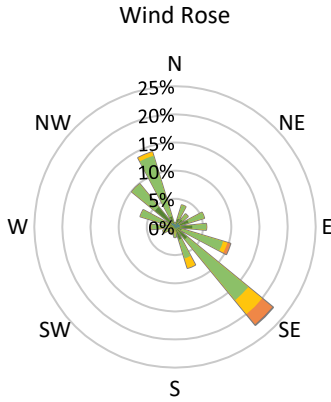
Pollutants		Month Records		24-Hour Records				1-Hour Records			
Name	Conc. Unit	Avg. Conc.	Total Uptime	Maximum		SAAQS Standard	Exceed Days	Maximum		SAAQS Standard	Exceed Hours
				Conc.	Time			Conc.	Time		
NO	ppb	0.8	96%	3.6	Apr-25	-	-	52.3	Apr-25 05:00	-	-
NO ₂	ppb	2.2	96%	5.2	Apr-16	106	0	27.3	Apr-25 05:00	159	0
NO _x	ppb	2.9	96%	6.8	Apr-25	-	-	79.0	Apr-25 05:00	-	-
SO ₂	ppb	0.6	96%	1.4	Apr-09	48	0	14.7	Apr-09 18:00	172	0
H ₂ S	ppb	0.6	96%	0.9	Apr-09	3.6	0	3.8	Apr-09 18:00	11	0
O ₃	ppb	21.4	96%	26.6	Apr-17	-	-	31.8	Apr-17 14:00	82	0
PM _{2.5}	µg/m ³	2.8	100%	8.4	Apr-29	28	0	13.6	Apr-16 07:00	-	-

SAAQS: Saskatchewan Ambient Air Quality Standards



* colored lines indicate 1-hr concentration data for all parameters; solid black lines indicate 24-hr concentrations for PM_{2.5}, NO₂, SO₂, and H₂S

GPAZ Regina Station - April 2022 Summary Report



Parameters	Unit	Color Code for Wind Speed and Pollution Concentration Class						
		0.3 ≤ WS < 1.4	1.4 ≤ WS < 3.1	3.1 ≤ WS < 7.8	7.8 ≤ WS < 10.8	10.8 ≤ WS < 13.6	WS ≥ 13.6	
SO ₂	ppb	0 ≤ C < 1	1 ≤ C < 5	5 ≤ C < 10	10 ≤ C < 57	57 ≤ C < 172	C ≥ 172	
NO ₂	ppb	0 ≤ C < 5	5 ≤ C < 15	15 ≤ C < 30	30 ≤ C < 100	100 ≤ C < 212	C ≥ 212	
H ₂ S	ppb	0 ≤ C < 1	1 ≤ C < 3.6	3.6 ≤ C < 5	5 ≤ C < 8	8 ≤ C < 10.8	C ≥ 10.8	
O ₃	ppb	0 ≤ C < 10	10 ≤ C < 20	20 ≤ C < 40	40 ≤ C < 60	60 ≤ C < 82	C ≥ 82	
PM _{2.5}	µg/m ³	0 ≤ C < 2	2 ≤ C < 4	4 ≤ C < 10	10 ≤ C < 20	20 ≤ C < 30	C ≥ 30	

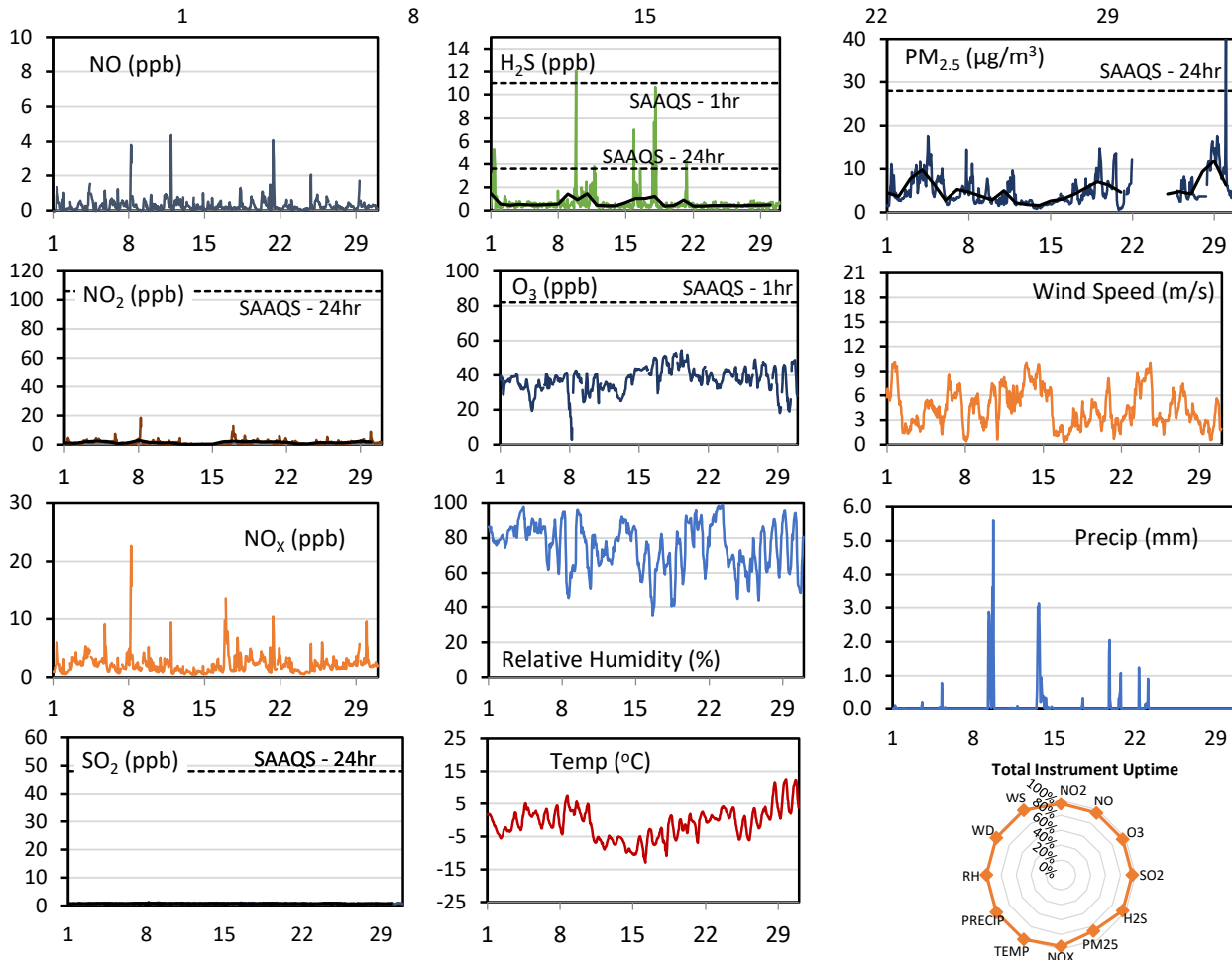
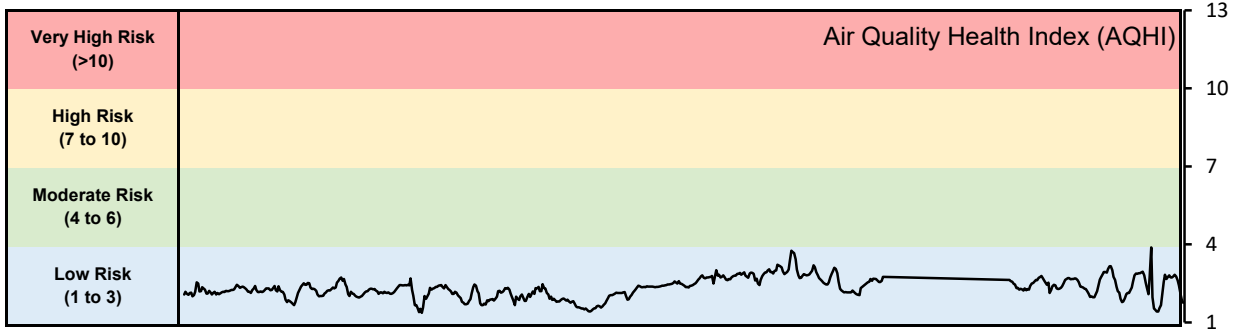
Monthly Update

- Achieved > 95% of scheduled uptime for all parameters
- Downtime of <95% due to routine daily internal zeroes and spans

GPAZ Yorkton Station - April 2022 Summary Report

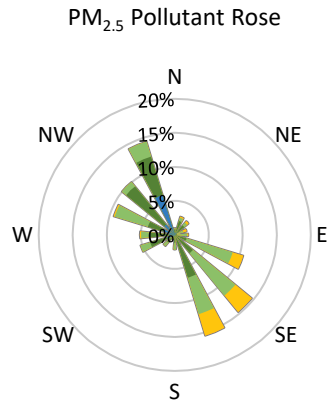
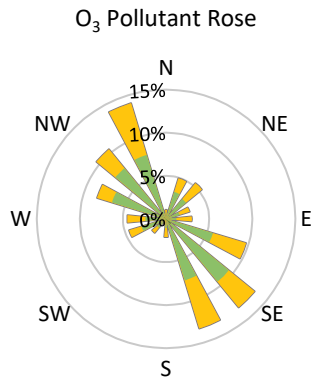
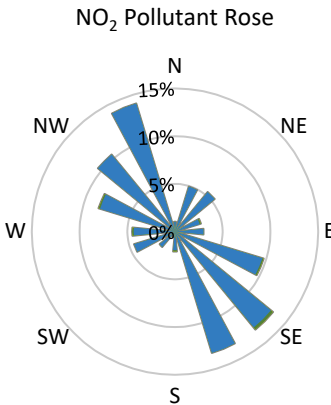
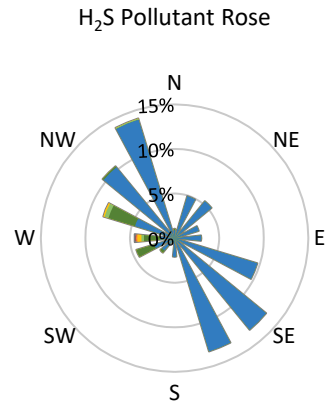
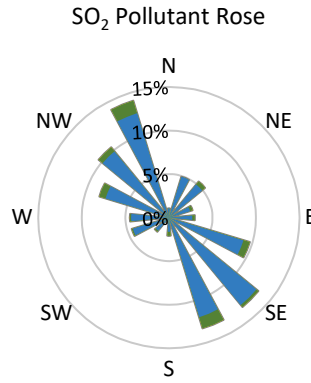
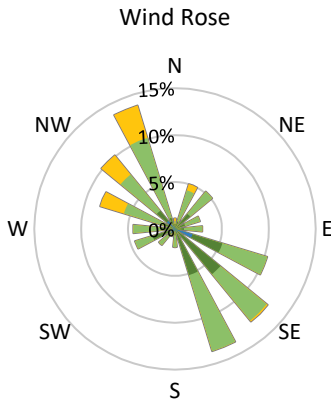
Pollutants		Month Records		24-Hour Records				1-Hour Records			
Name	Conc. Unit	Avg. Conc.	Total Uptime	Maximum		SAAQS Standard	Exceed Days	Maximum		SAAQS Standard	Exceed Hours
				Conc.	Time			Conc.	Time		
NO	ppb	0.3	96%	0.6	Apr-21	-	-	4.4	Apr-11 22:00	-	-
NO ₂	ppb	1.5	96%	3.0	Apr-08	106	0	18.5	Apr-08 05:00	159	0
NO _x	ppb	2.2	96%	4.0	Apr-08	-	-	22.7	Apr-08 05:00	-	-
SO ₂	ppb	0.8	96%	0.9	Apr-09	48	0	1.4	Apr-08 05:00	172	0
H ₂ S	ppb	0.7	96%	1.5	Apr-01	3.6	0	12.1	Apr-09 20:00	11	1
O ₃	ppb	37.6	96%	48.3	Apr-19	-	-	54.4	Apr-19 07:00	82	0
PM _{2.5}	µg/m ³	5.0	87%	11.9	Apr-29	28	0	44.1	Apr-30 00:00	-	-

SAAQS: Saskatchewan Ambient Air Quality Standards



* colored lines indicate 1-hr concentration data for all parameters; solid black lines indicate 24-hr concentrations for PM_{2.5}, NO₂, SO₂, and H₂S

GPAZ Yorkton Station - April 2022 Summary Report



Parameters	Unit	Color Code for Wind Speed and Pollution Concentration Class						
Wind Speed	m/s	$0.3 \leq WS < 1.4$	$1.4 \leq WS < 3.1$	$3.1 \leq WS < 7.8$	$7.8 \leq WS < 10.8$	$10.8 \leq WS < 13.6$	$WS \geq 13.6$	
SO ₂	ppb	$0 \leq C < 1$	$1 \leq C < 5$	$5 \leq C < 10$	$10 \leq C < 57$	$57 \leq C < 172$	$C \geq 172$	
NO ₂	ppb	$0 \leq C < 5$	$5 \leq C < 15$	$15 \leq C < 30$	$30 \leq C < 100$	$100 \leq C < 212$	$C \geq 212$	
H ₂ S	ppb	$0 \leq C < 1$	$1 \leq C < 3.6$	$3.6 \leq C < 5$	$5 \leq C < 8$	$8 \leq C < 10.8$	$C \geq 10.8$	
O ₃	ppb	$0 \leq C < 10$	$10 \leq C < 20$	$20 \leq C < 40$	$40 \leq C < 60$	$60 \leq C < 82$	$C \geq 82$	
PM _{2.5}	µg/m ³	$0 \leq C < 2$	$2 \leq C < 4$	$4 \leq C < 10$	$10 \leq C < 20$	$20 \leq C < 30$	$C \geq 30$	

Monthly Update

- Achieved > 95% of scheduled uptime for all parameters, except Particulate (86.9%)
- Downtime of <95% due to routine daily internal zeroes and spans, tape ran out in the 5030i Sharp analyzer

Exceedance Summary (1- Hour Average - Exceedances in Bold)

Exceedance Time	AQHI	NO ₂	NO	SO ₂	O ₃	NO _x	H ₂ S	PM _{2.5}	Temp	WD	WS
		ppb	ppb	ppb	ppb	ppb	ppb	µg/m ³	°C	deg	m/s
Apr-09 20:00	2.1	4.6	0.1	0.8	30.1	5.1	12.1	3.5	3.4	273.6	2.6